

# Résidence Castanea

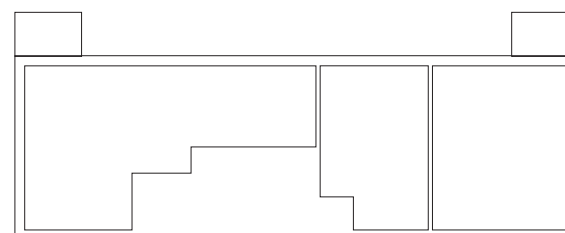
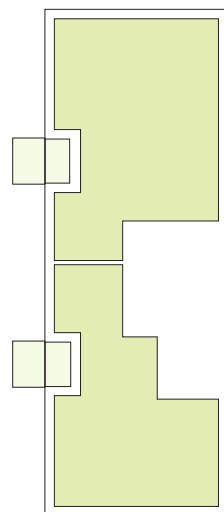
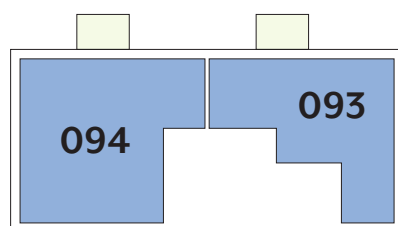
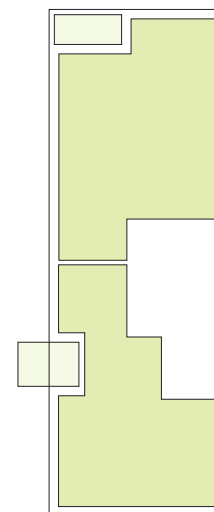
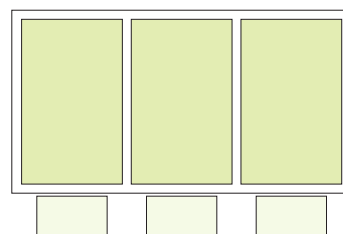
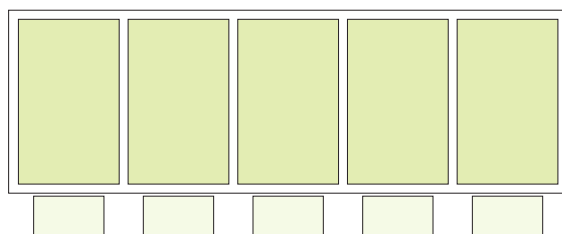


## APPARTEMENTS

# REZ-DE-CHAUSSÉE

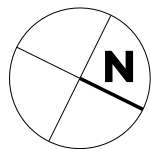
Type	Surface Utile	surface terrasse	surface cave	prix de vente subventionné TVA 3% *
<b>093</b>	65,67m <sup>2</sup>	5,75m <sup>2</sup>	5,25m <sup>2</sup>	<b>191.745 €</b>
<b>094</b>	86,30m <sup>2</sup>	6,15m <sup>2</sup>	5,25m <sup>2</sup>	<b>264.978 €</b>

- les surfaces inscrites dans ce tableau peuvent subir de légères modifications dues aux nécessités techniques de la construction.
- surface utile = surface calculée à l'intérieur des murs extérieurs.
- \* primes ACE sont déjà déduites (uniquement pour les acquéreurs bénéficiant d'une prime de construction de l'Etat.)



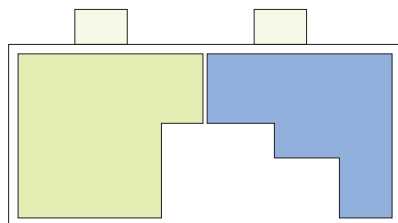
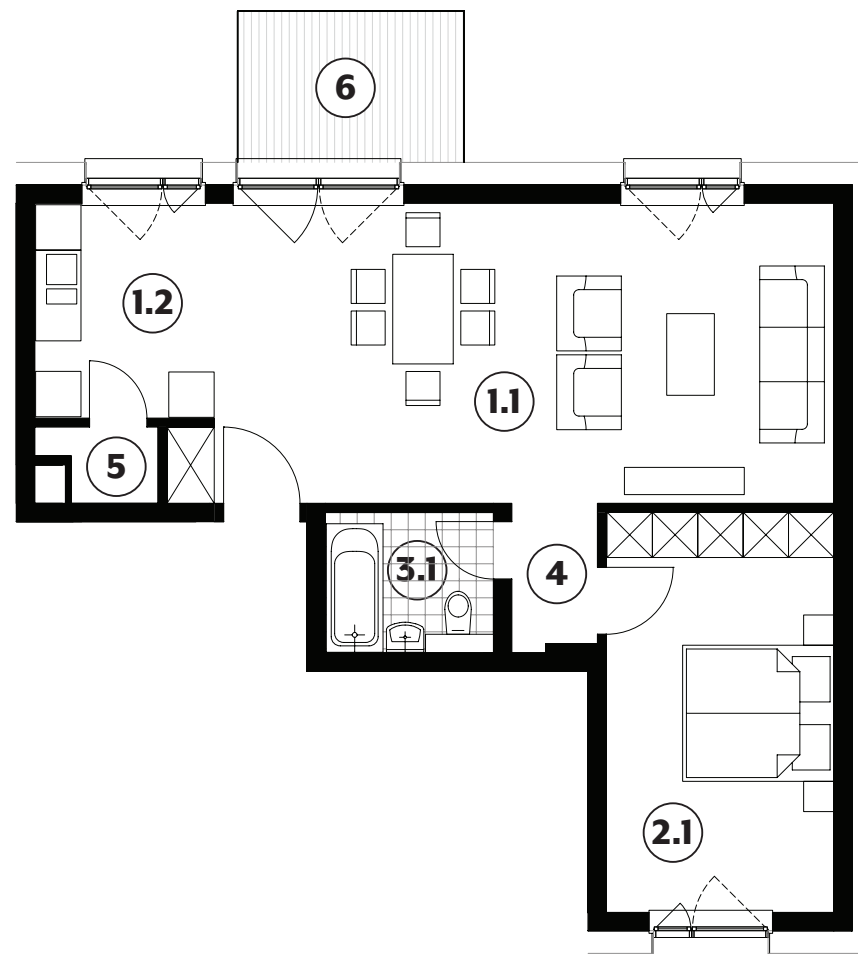
APPARTEMENT TYPE

093



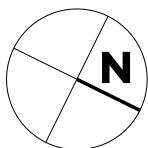
<b>1.1</b>	séjour	33,15m <sup>2</sup>
<b>1.2</b>	cuisine	6,75m <sup>2</sup>
<b>2.1</b>	chambre	15,95m <sup>2</sup>
<b>3.1</b>	salle de bains	4,30m <sup>2</sup>
<b>4</b>	couloir	2,25m <sup>2</sup>
<b>5</b>	débarras	1,35m <sup>2</sup>
<b>6</b>	terrasse	5,75m <sup>2</sup>
<b>7</b>	jardin	24,90m <sup>2</sup>

**65,67m<sup>2</sup>**



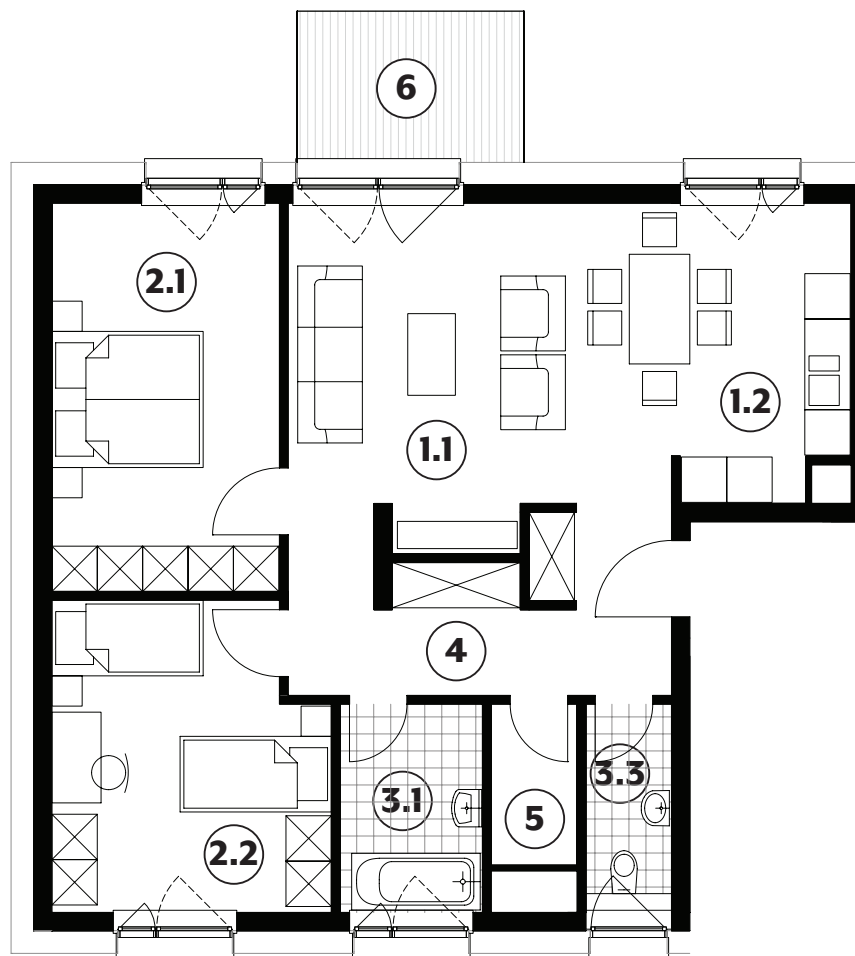
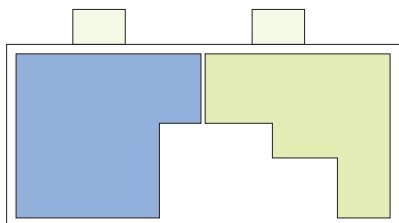
APPARTEMENT TYPE

094



<b>1.1</b>	séjour	21,25m <sup>2</sup>
<b>1.2</b>	cuisine	9,00m <sup>2</sup>
<b>2.1</b>	chambre	15,45m <sup>2</sup>
<b>2.2</b>	chambre	14,30m <sup>2</sup>
<b>3.1</b>	salle de bains	5,20m <sup>2</sup>
<b>3.3</b>	w.c.	3,15m <sup>2</sup>
<b>4</b>	couloir	10,90m <sup>2</sup>
<b>5</b>	débarras	2,40m <sup>2</sup>
<b>6</b>	terrasse	6,15m <sup>2</sup>
<b>7</b>	jardin	23,90m <sup>2</sup>

**86,30m<sup>2</sup>**

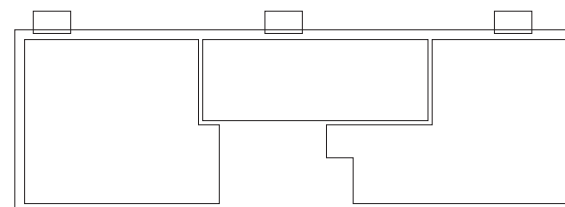
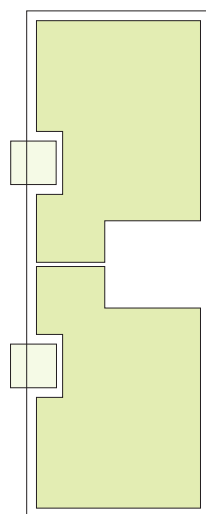
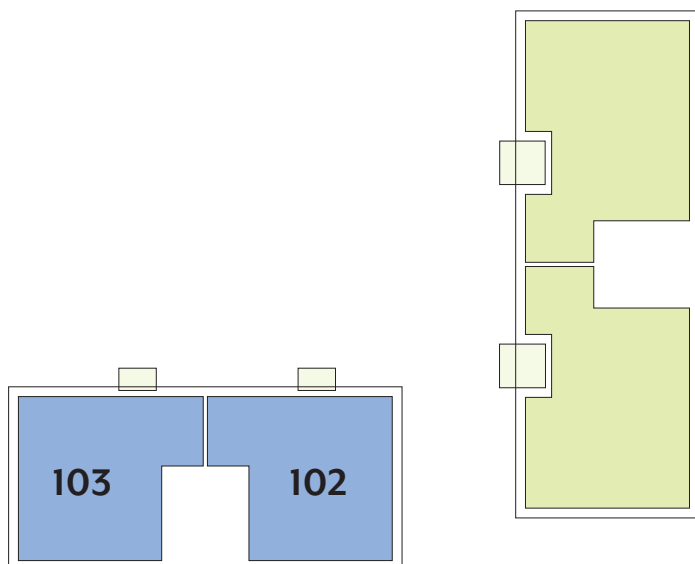
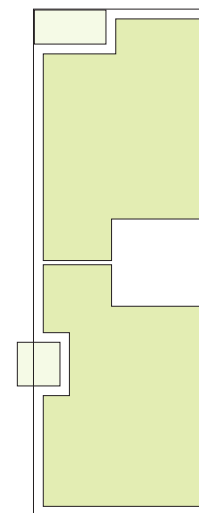
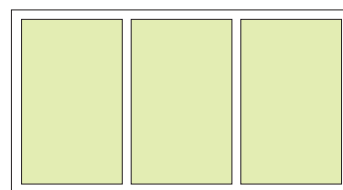
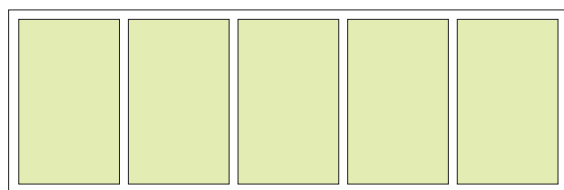


# APPARTEMENTS

# 1<sup>ER</sup> ÉTAGE

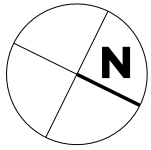
Type	Surface Utile	surface balcon	surface cave	prix de vente subventionné TVA 3% *
<b>102</b>	86,30m <sup>2</sup>	2,75m <sup>2</sup>	5,25m <sup>2</sup>	<b>267.862 €</b>
<b>103</b>	86,30m <sup>2</sup>	2,75m <sup>2</sup>	5,25m <sup>2</sup>	<b>267.862 €</b>

- les surfaces inscrites dans ce tableau peuvent subir de légères modifications dues aux nécessités techniques de la construction.
- surface utile = surface calculée à l'intérieur des murs extérieurs.
- \* primes ACE sont déjà déduites (uniquement pour les acquéreurs bénéficiant d'une prime de construction de l'Etat.)



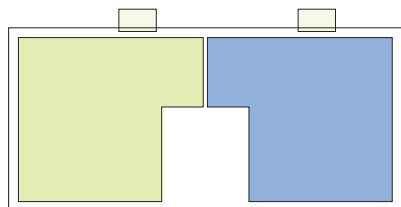
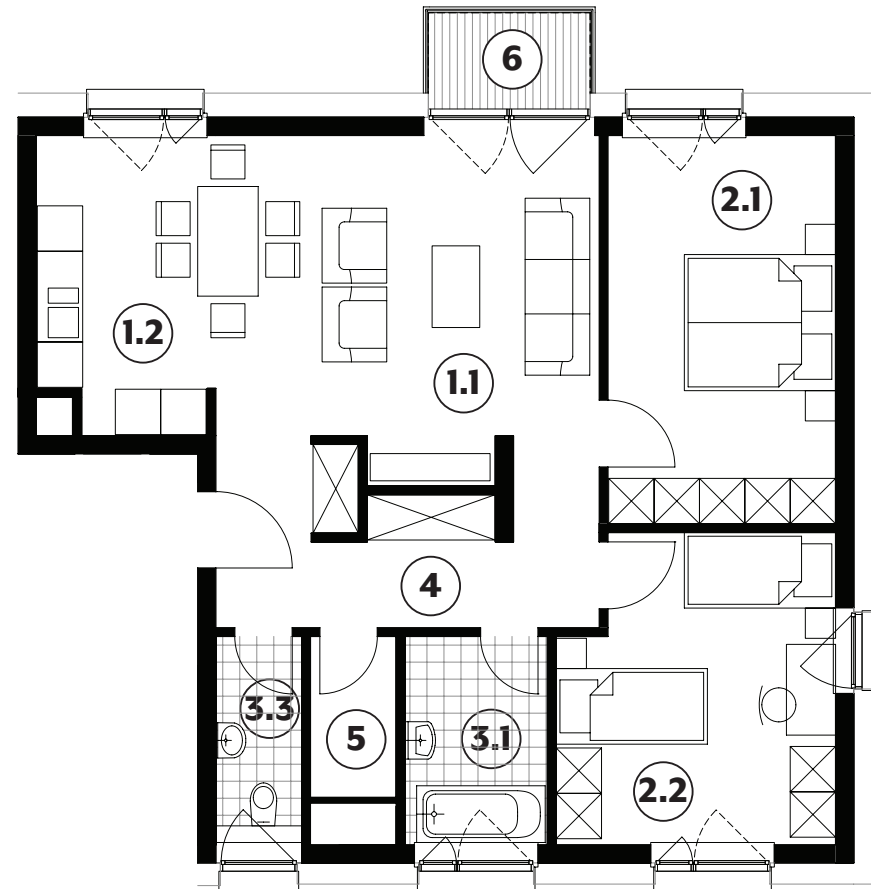
# APPARTEMENT TYPE

# 102



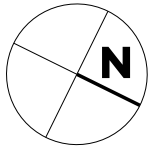
<b>1.1</b>	séjour	21,25m <sup>2</sup>
<b>1.2</b>	cuisine	9,00m <sup>2</sup>
<b>2.1</b>	chambre	15,45m <sup>2</sup>
<b>2.2</b>	chambre	14,30m <sup>2</sup>
<b>3.1</b>	salle de bains	5,20m <sup>2</sup>
<b>3.3</b>	w.c.	3,15m <sup>2</sup>
<b>4</b>	couloir	10,90m <sup>2</sup>
<b>5</b>	débarras	2,40m <sup>2</sup>
<b>6</b>	balcon	2,75m <sup>2</sup>

**86,30m<sup>2</sup>**



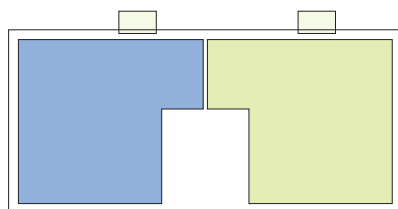
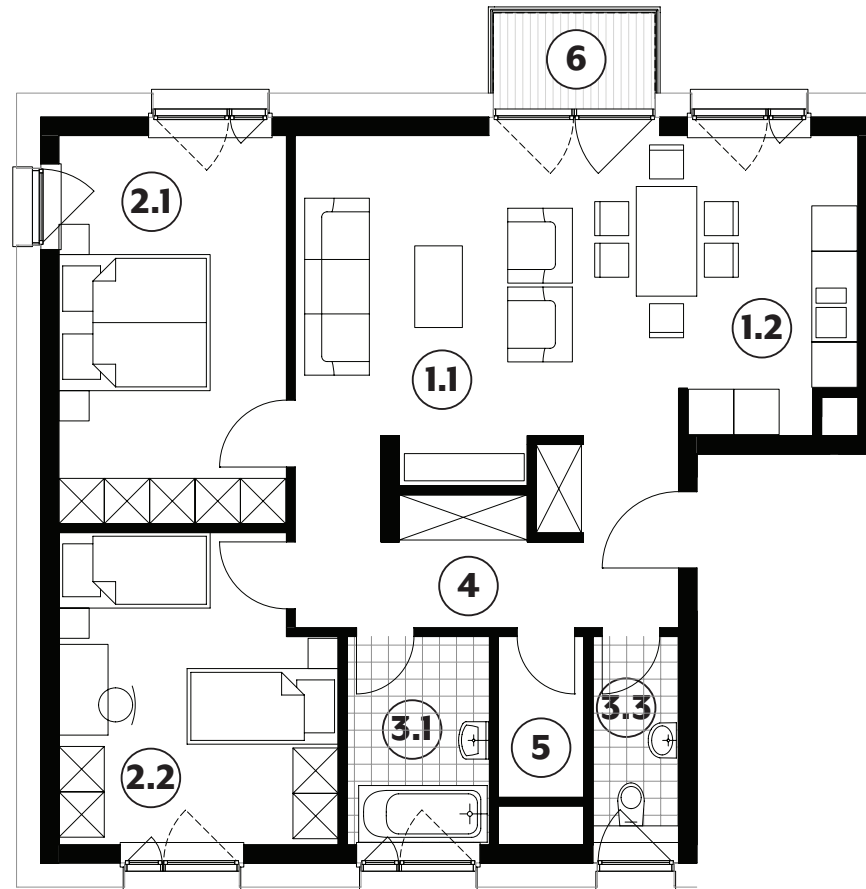
APPARTEMENT TYPE

103



<b>1.1</b>	séjour	21,25m <sup>2</sup>
<b>1.2</b>	cuisine	9,00m <sup>2</sup>
<b>2.1</b>	chambre	15,45m <sup>2</sup>
<b>2.2</b>	chambre	14,30m <sup>2</sup>
<b>3.1</b>	salle de bains	5,20m <sup>2</sup>
<b>3.3</b>	w.c.	3,15m <sup>2</sup>
<b>4</b>	couloir	10,90m <sup>2</sup>
<b>5</b>	débarras	2,40m <sup>2</sup>
<b>6</b>	balcon	2,75m <sup>2</sup>

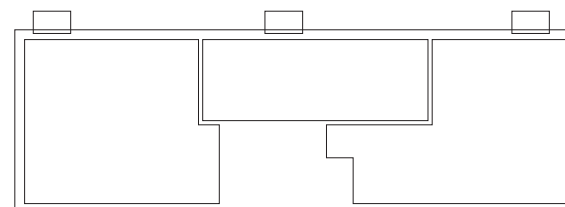
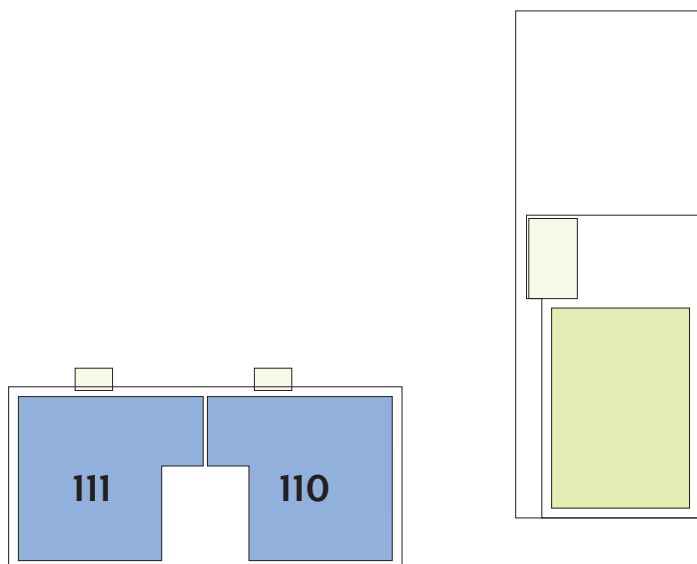
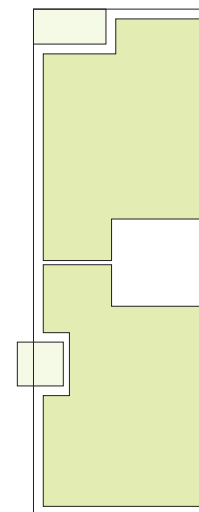
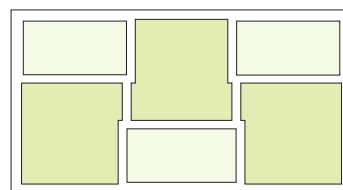
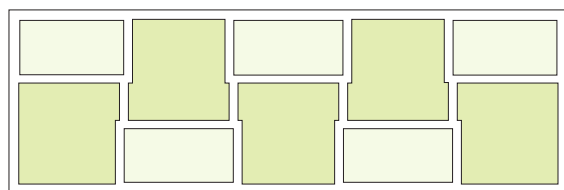
**86,30m<sup>2</sup>**



# APPARTEMENTS 2<sup>ÈME</sup> ÉTAGE

Type	Surface Utile	surface balcon	surface cave	prix de vente subventionné TVA 3% *
<b>110</b>	86,30m <sup>2</sup>	2,75m <sup>2</sup>	5,25m <sup>2</sup>	<b>273.012 €</b>
<b>111</b>	86,30m <sup>2</sup>	2,75m <sup>2</sup>	5,25m <sup>2</sup>	<b>273.012 €</b>

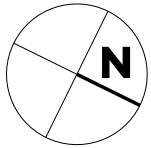
- les surfaces inscrites dans ce tableau peuvent subir de légères modifications dues aux nécessités techniques de la construction.
- surface utile = surface calculée à l'intérieur des murs extérieurs.
- \* primes ACE sont déjà déduites (uniquement pour les acquéreurs bénéficiant d'une prime de construction de l'Etat.)





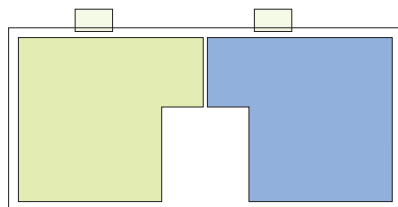
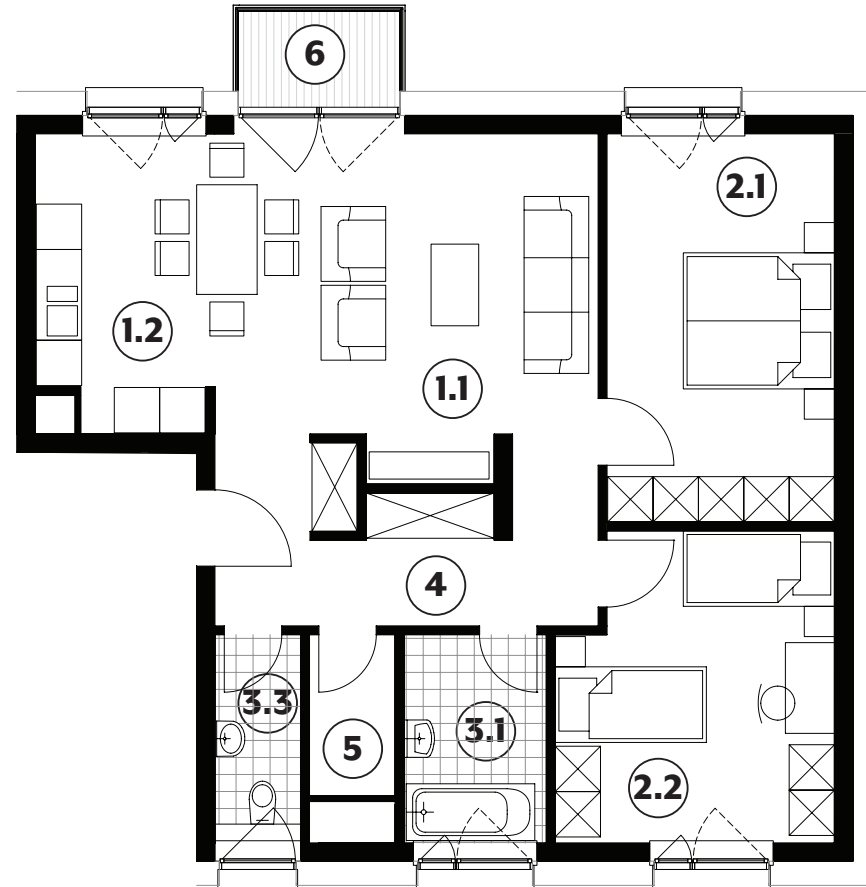
# APPARTEMENT TYPE

# 110



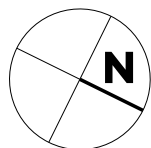
<b>1.1</b>	séjour	21,25m <sup>2</sup>
<b>1.2</b>	cuisine	9,00m <sup>2</sup>
<b>2.1</b>	chambre	15,45m <sup>2</sup>
<b>2.2</b>	chambre	14,30m <sup>2</sup>
<b>3.1</b>	salle de bains	5,20m <sup>2</sup>
<b>3.3</b>	w.c.	3,15m <sup>2</sup>
<b>4</b>	couloir	10,90m <sup>2</sup>
<b>5</b>	débarras	2,40m <sup>2</sup>
<b>6</b>	balcon	2,75m <sup>2</sup>

**86,30m<sup>2</sup>**



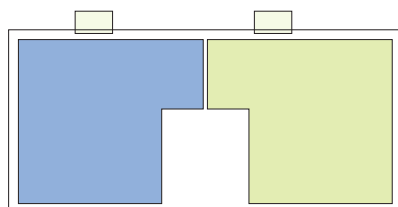
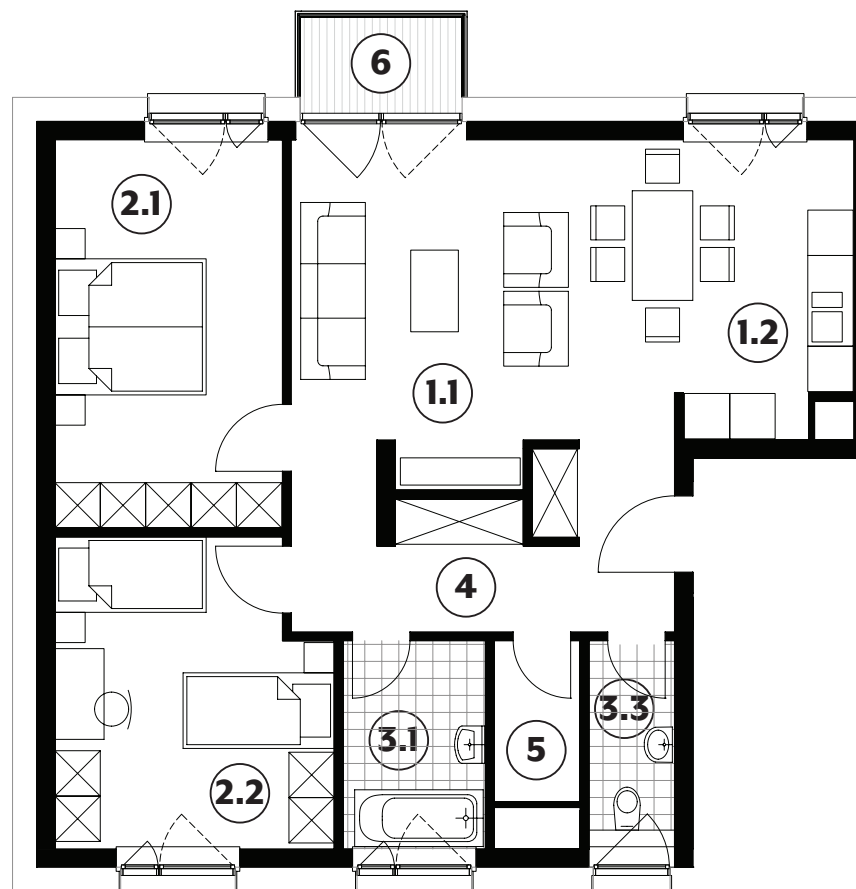
# APPARTEMENT TYPE

# 111



<b>1.1</b>	séjour	21,25m <sup>2</sup>
<b>1.2</b>	cuisine	9,00m <sup>2</sup>
<b>2.1</b>	chambre	15,45m <sup>2</sup>
<b>2.2</b>	chambre	14,30m <sup>2</sup>
<b>3.1</b>	salle de bains	5,20m <sup>2</sup>
<b>3.3</b>	w.c.	3,15m <sup>2</sup>
<b>4</b>	couloir	10,90m <sup>2</sup>
<b>5</b>	débarras	2,40m <sup>2</sup>
<b>6</b>	balcon	2,75m <sup>2</sup>

**86,30m<sup>2</sup>**

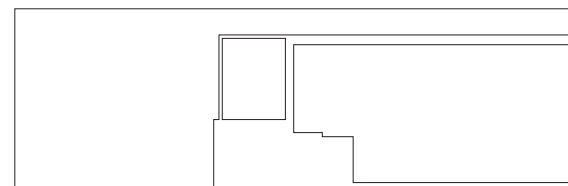
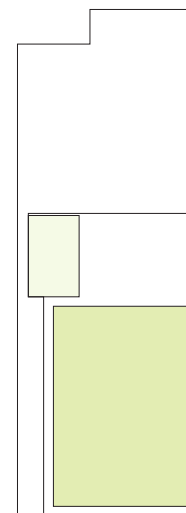
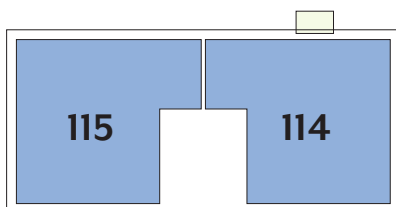


APPARTEMENTS

# 3<sup>ÈME</sup> ÉTAGE

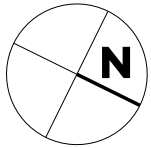
Type	Surface Utile	surface balcon	surface cave	prix de vente subventionné TVA 3% *
<b>114</b>	86,30m <sup>2</sup>	2,75m <sup>2</sup>	5,25m <sup>2</sup>	<b>278.162 €</b>
<b>115</b>	86,30m <sup>2</sup>	-	5,25m <sup>2</sup>	<b>270.746 €</b>

- les surfaces inscrites dans ce tableau peuvent subir de légères modifications dues aux nécessités techniques de la construction.
- surface utile = surface calculée à l'intérieur des murs extérieurs.
- \* primes ACE sont déjà déduites (uniquement pour les acquéreurs bénéficiant d'une prime de construction de l'Etat.)



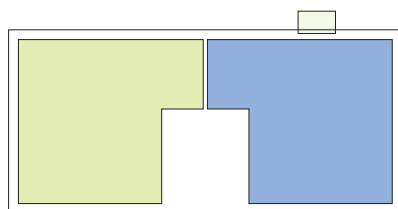
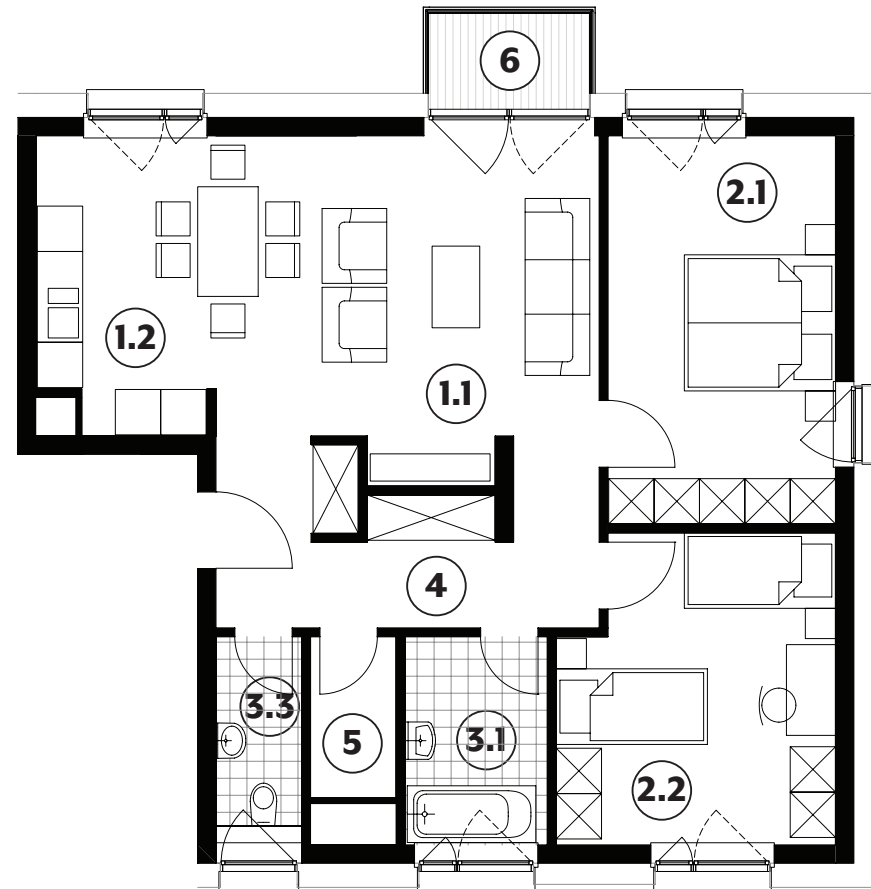
APPARTEMENT TYPE

114



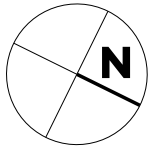
<b>1.1</b>	séjour	21,25m <sup>2</sup>
<b>1.2</b>	cuisine	9,00m <sup>2</sup>
<b>2.1</b>	chambre	15,45m <sup>2</sup>
<b>2.2</b>	chambre	14,30m <sup>2</sup>
<b>3.1</b>	salle de bains	5,20m <sup>2</sup>
<b>3.3</b>	w.c.	3,15m <sup>2</sup>
<b>4</b>	couloir	10,90m <sup>2</sup>
<b>5</b>	débarras	2,40m <sup>2</sup>
<b>6</b>	balcon	2,75m <sup>2</sup>

**86,30m<sup>2</sup>**



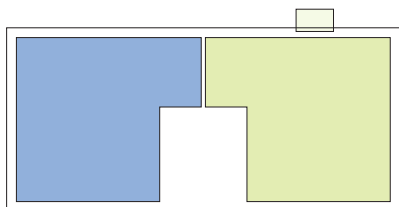
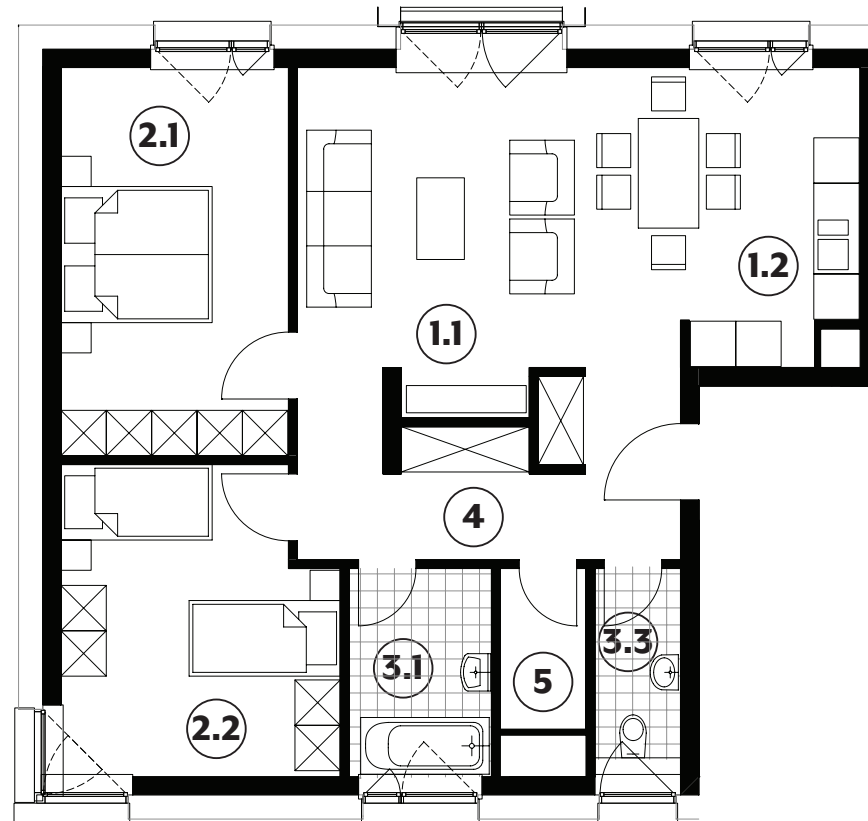
# APPARTEMENT TYPE

# 115

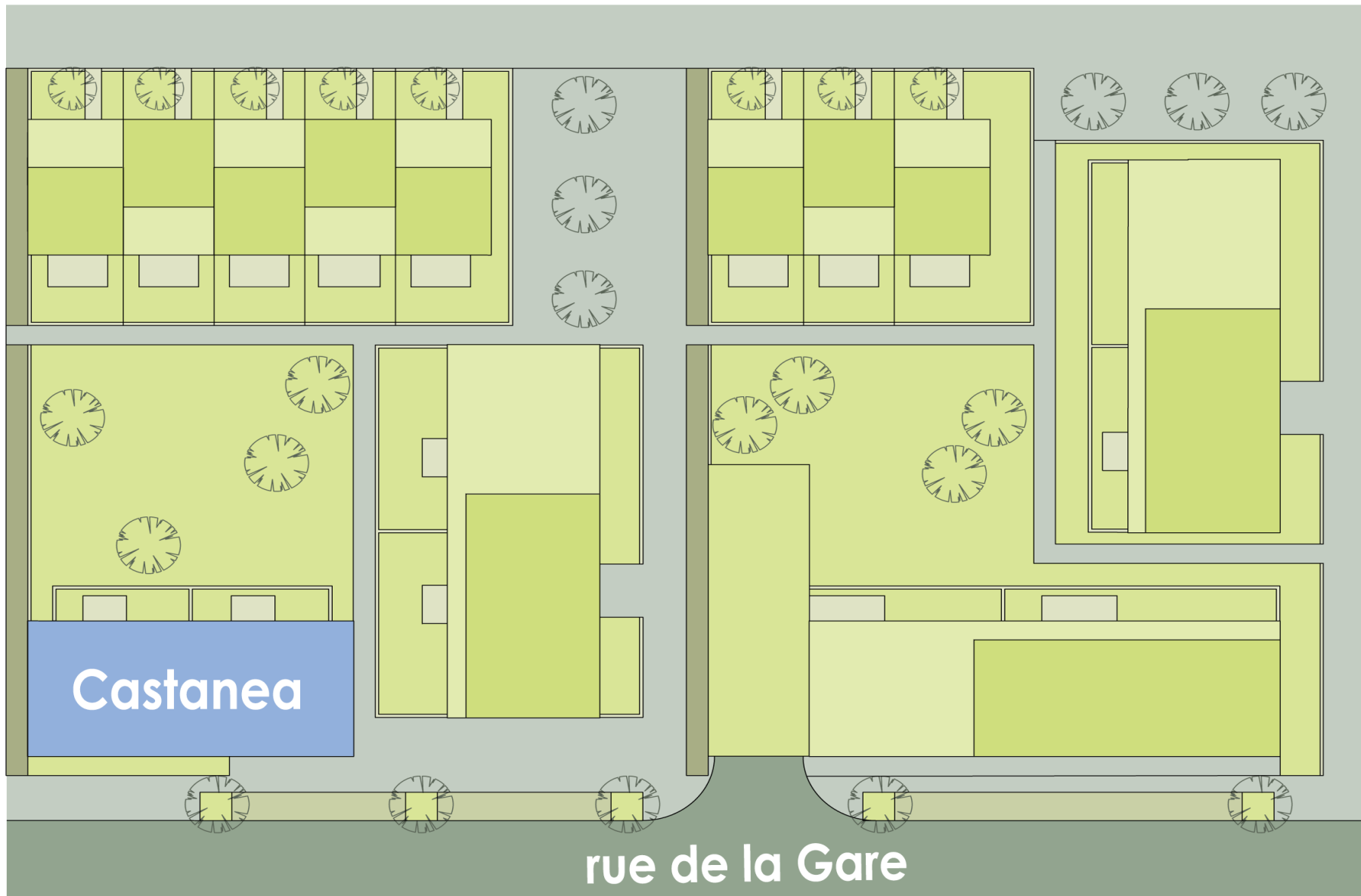


<b>1.1</b>	séjour	21,25m <sup>2</sup>
<b>1.2</b>	cuisine	9,00m <sup>2</sup>
<b>2.1</b>	chambre	15,45m <sup>2</sup>
<b>2.2</b>	chambre	14,30m <sup>2</sup>
<b>3.1</b>	salle de bains	5,20m <sup>2</sup>
<b>3.3</b>	w.c.	3,15m <sup>2</sup>
<b>4</b>	couloir	10,90m <sup>2</sup>
<b>5</b>	débarras	2,40m <sup>2</sup>

**86,30m<sup>2</sup>**



# IMPLANTATION







Société Nationale des  
Habitations à Bon Marché

2b, rue Kalchesbruck  
L-1852 Luxembourg

Cindy Arendt  
Tél. (+352) 448292 - 555  
cindy.arendt@snhbm.lu

[snhbm.lu](http://snhbm.lu)