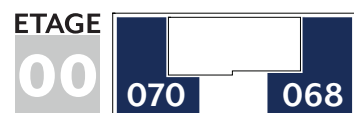
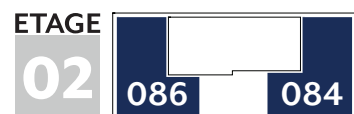
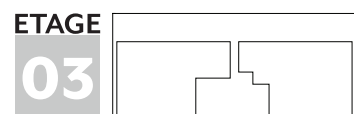


Résidence Alesia



APPARTEMENT TYPE

2 CHAMBRES



Type	Etage	Surface Utile	surface balcon / terrasse	surface cave	prix de vente subventionné TVA 3%
068	RDC	85,23m ²	9,05m ²	5,95m ²	233.564 €
070	RDC	79,54m ²	9,05m ²	5,63m ²	223.573 €
076	1 ^{er}	85,23m ²	3,50m ²	5,63m ²	236.551 €
078	1 ^{er}	79,54m ²	3,50m ²	5,64m ²	226.148 €
084	2 ^{ème}	85,23m ²	3,50m ²	5,93m ²	241.495 €
086	2 ^{ème}	79,54m ²	3,50m ²	5,63m ²	230.886 €

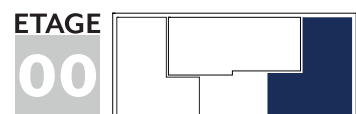
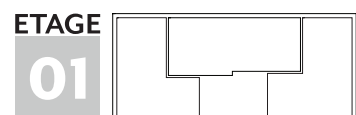
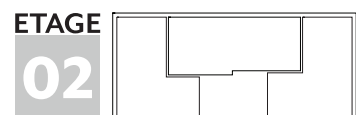
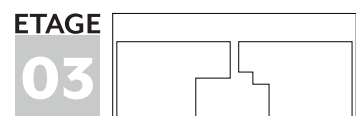
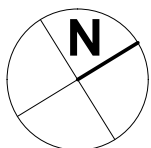
- les surfaces inscrites dans ce tableau peuvent subir de légères modifications dues aux nécessités techniques de la construction.
- surface utile = surface calculée à l'intérieur des murs extérieurs.

Tous les appartements sont équipés de :

- stores a lamelles motorisés
- triple vitrage

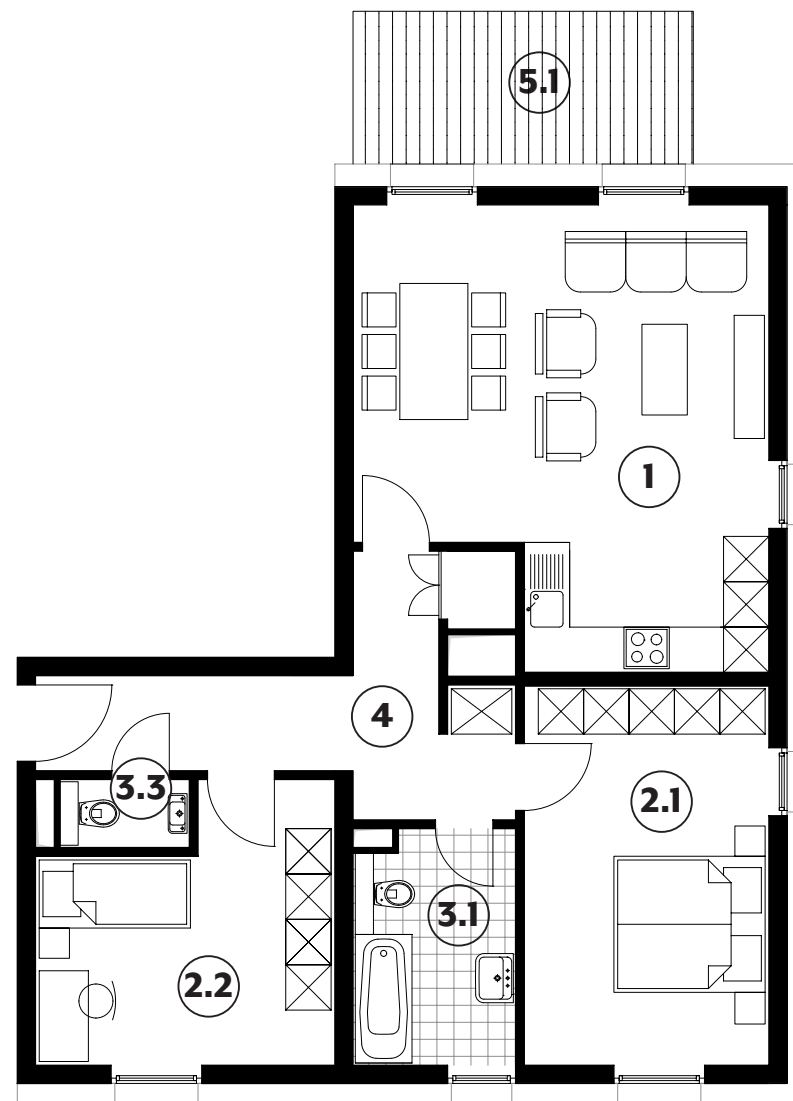
APPARTEMENT TYPE

068



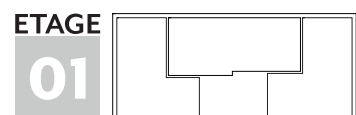
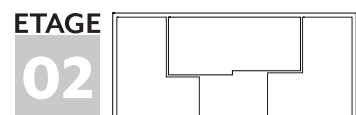
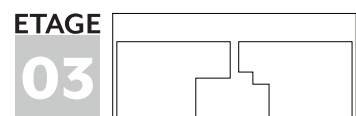
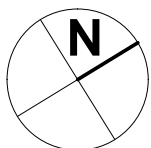
1	séjour / cuisine	30,10m²
2.1	chambre	16,20m²
2.2	chambre	12,75m²
3.1	salle de bains	6,50m²
3.3	w.c.	1,50m²
4	couloir	11,05m²
5.1	terrasse	9,05m²

85,23m²



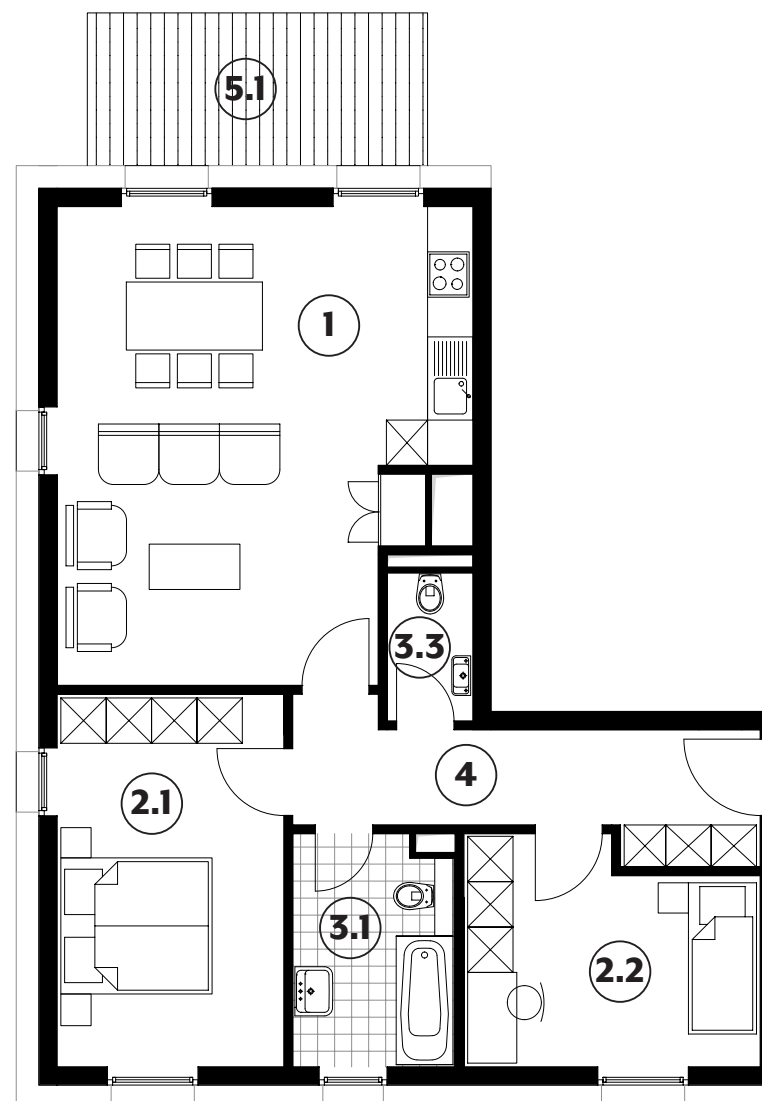
APPARTEMENT TYPE

070



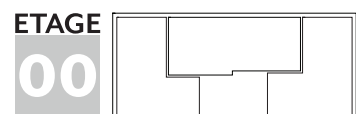
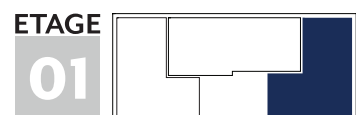
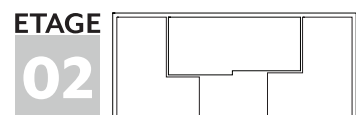
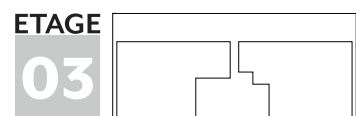
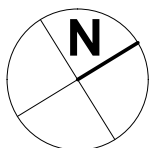
1	séjour / cuisine	31,20m²
2.1	chambre	14,75m²
2.2	chambre	11,00m²
3.1	salle de bains	6,40m²
3.3	w.c.	2,20m²
4	couloir	9,35m²
5.1	terrasse	9,05m²

79,54m²



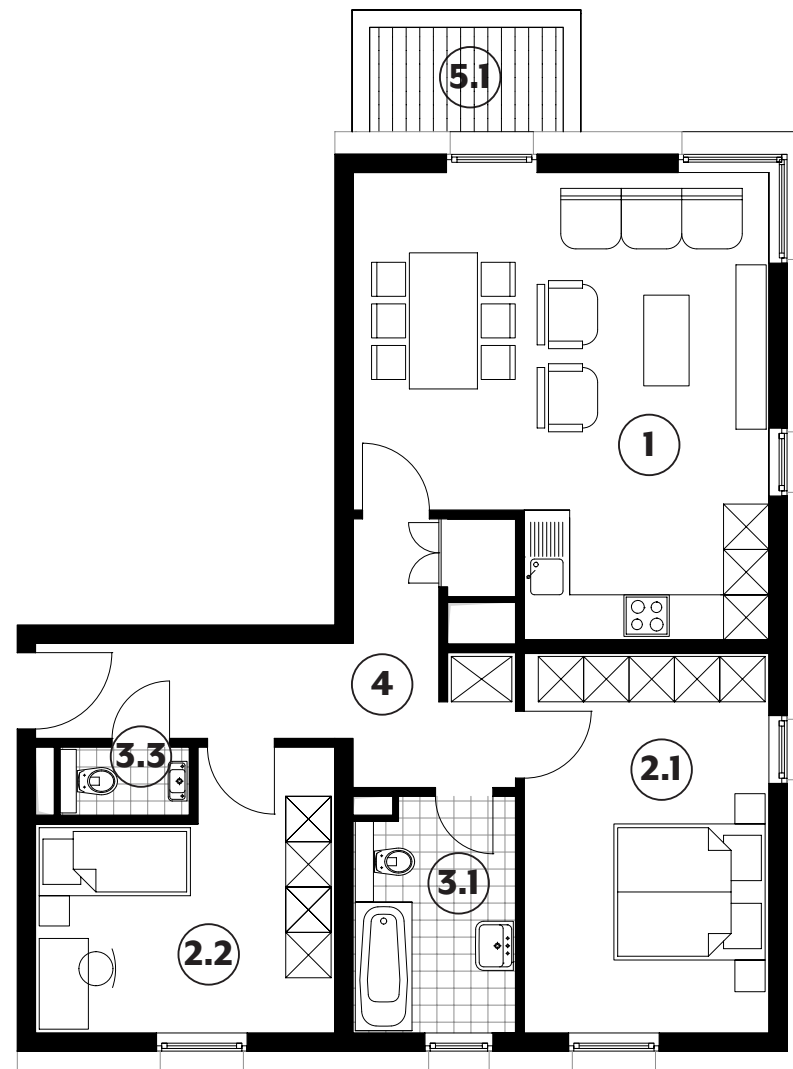
APPARTEMENT TYPE

076



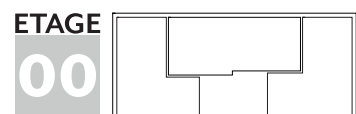
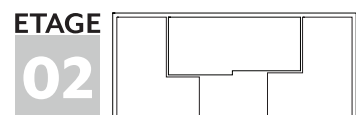
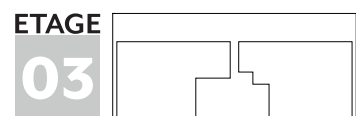
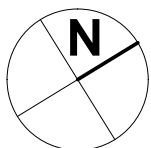
1	séjour / cuisine	30,10m²
2.1	chambre	16,20m²
2.2	chambre	12,75m²
3.1	salle de bains	6,50m²
3.3	w.c.	1,50m²
4	couloir	11,05m²
5.1	balcon	3,50m²

85,23m²



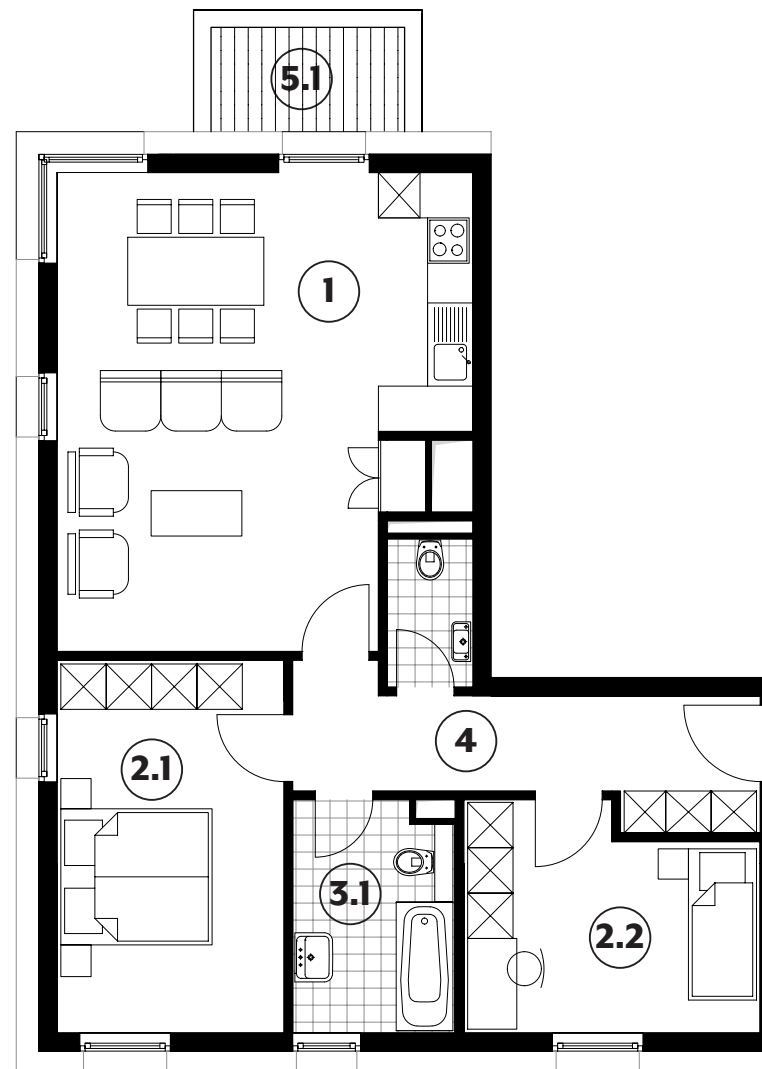
APPARTEMENT TYPE

078



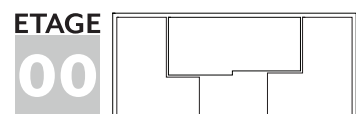
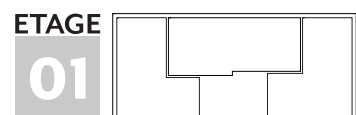
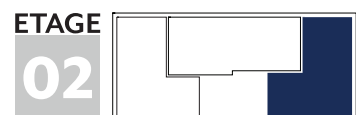
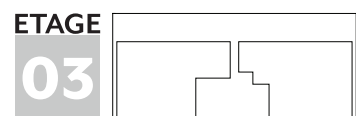
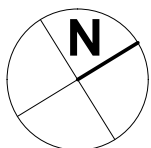
1	séjour / cuisine	31,20m²
2.1	chambre	14,75m²
2.2	chambre	11,00m²
3.1	salle de bains	6,40m²
3.3	w.c.	2,20m²
4	couloir	9,35m²
5.1	balcon	3,50m²

79,54m²



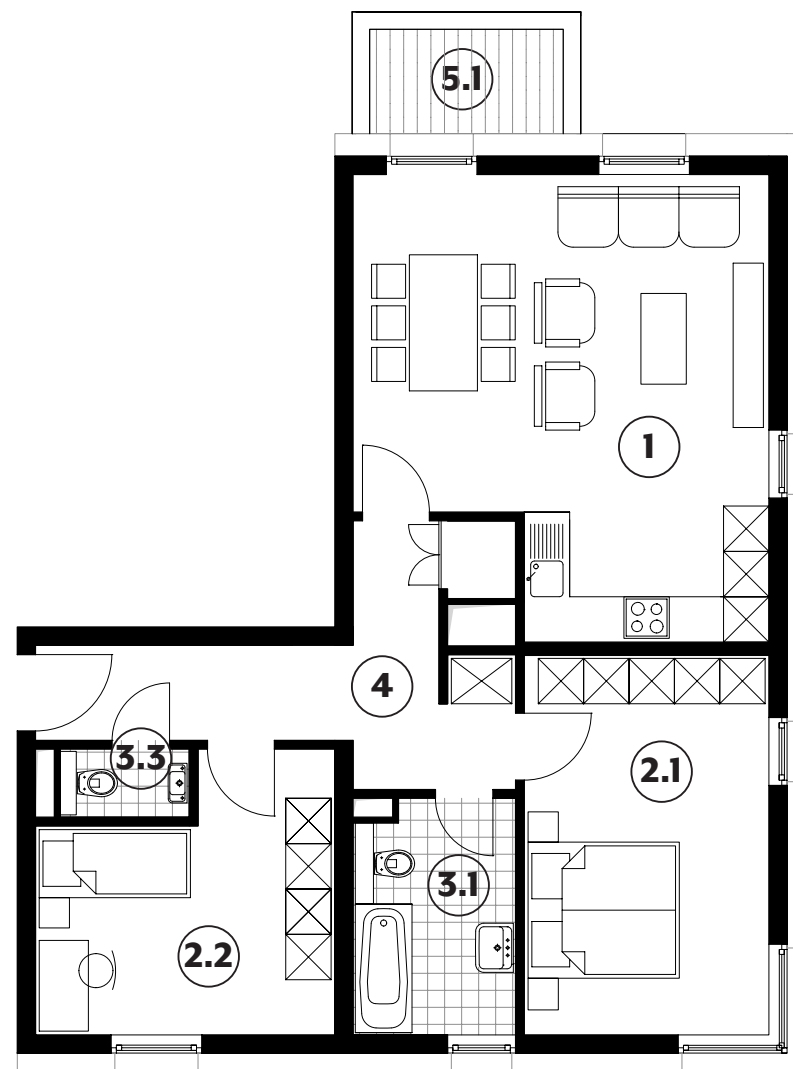
APPARTEMENT TYPE

084



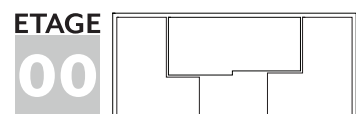
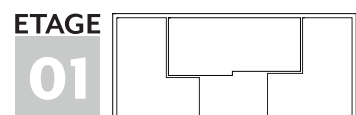
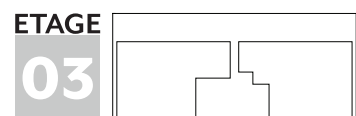
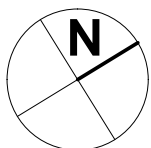
1	séjour / cuisine	30,10m²
2.1	chambre	16,20m²
2.2	chambre	12,75m²
3.1	salle de bains	6,50m²
3.3	w.c.	1,50m²
4	couloir	11,05m²
5.1	balcon	3,50m²

85,23m²



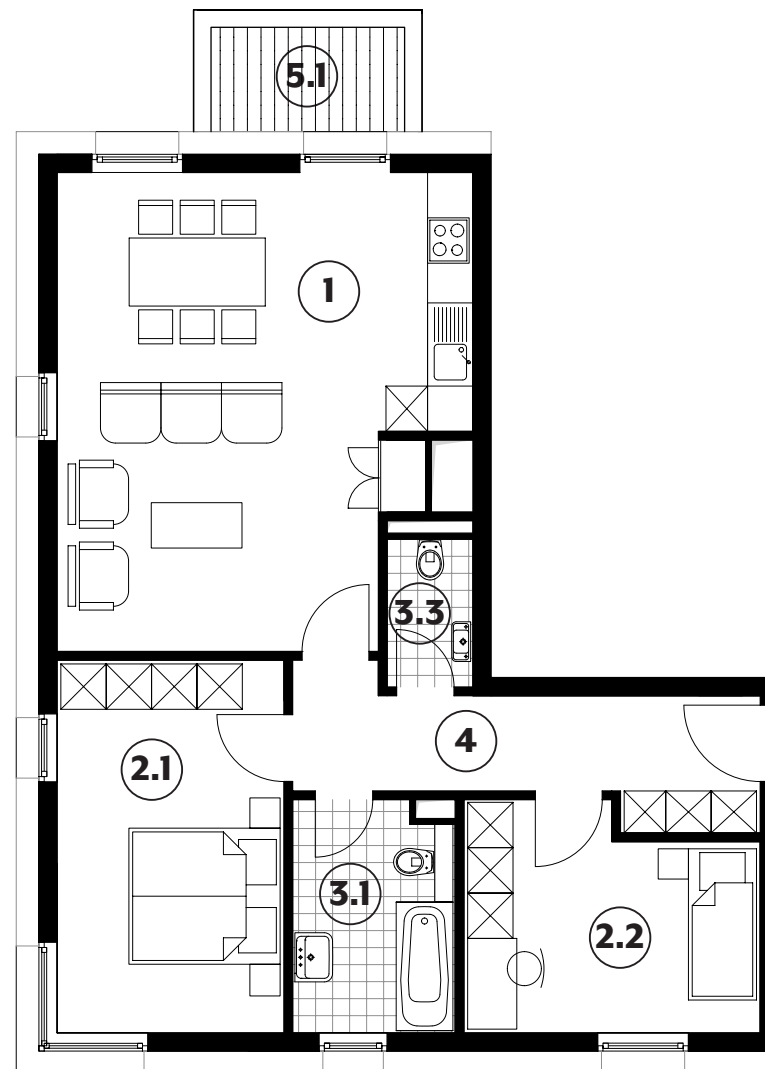
APPARTEMENT TYPE

086



1	séjour / cuisine	31,20m²
2.1	chambre	14,75m²
2.2	chambre	11,00m²
3.1	salle de bains	6,40m²
3.3	w.c.	2,20m²
4	couloir	9,35m²
5.1	balcon	3,50m²

79,54m²



APPARTEMENT TYPE

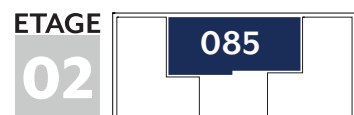
3 CHAMBRES

Type	Etage	Surface Utile	surface balcon / terrasse	surface cave	prix de vente subventionné TVA 3%
069	RDC	97,32m ²	9,05m ²	7,27m ²	273.322 €
077	1 ^{er}	97,32m ²	7,00m ²	6,16m ²	280.841 €
085	2 ^{ème}	97,32m ²	7,00m ²	6,40m ²	286.609 €
093	3 ^{ème}	101,53m ²	24,10m ²	8,07m ²	317.715 €
094	3 ^{ème}	99,35m ²	24,10m ²	7,72m ²	313.389 €

- les surfaces inscrites dans ce tableau peuvent subir de légères modifications dues aux nécessités techniques de la construction.
- surface utile = surface calculée à l'intérieur des murs extérieurs.

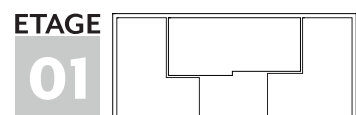
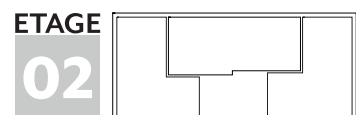
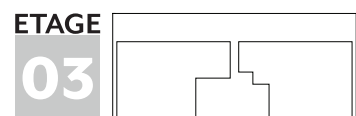
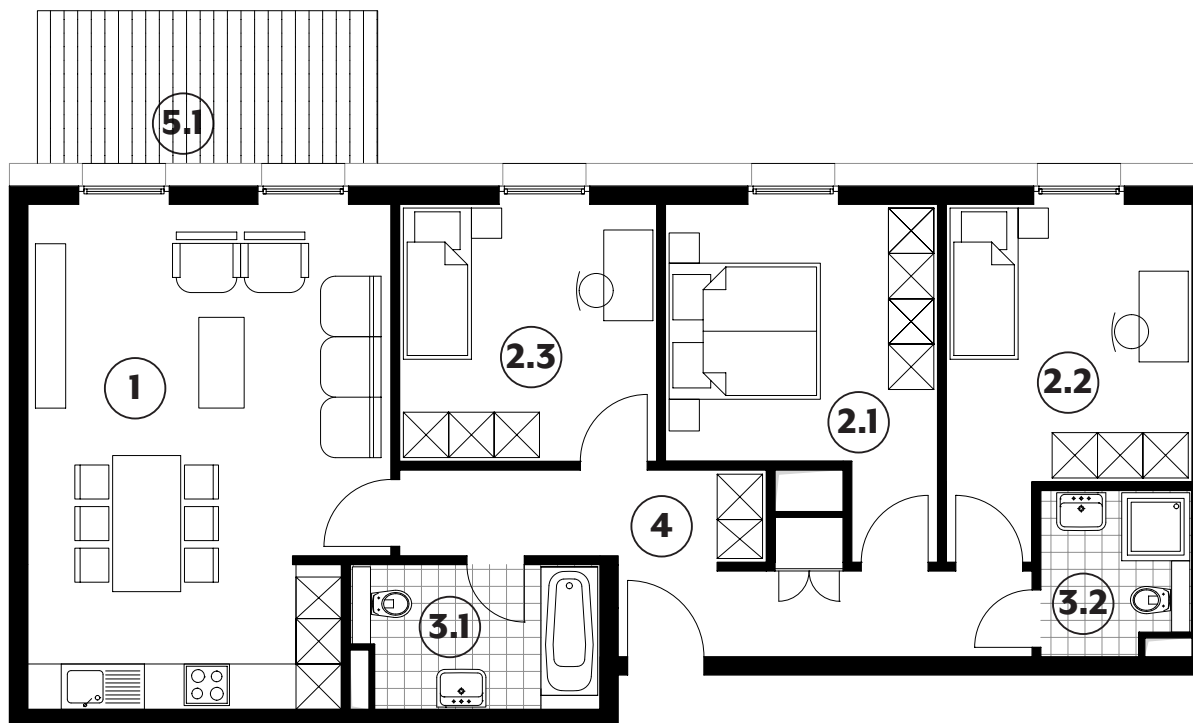
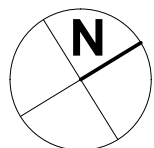
Tous les appartements sont équipés de :

- stores a lamelles motorisés
- triple vitrage



APPARTEMENT TYPE

069

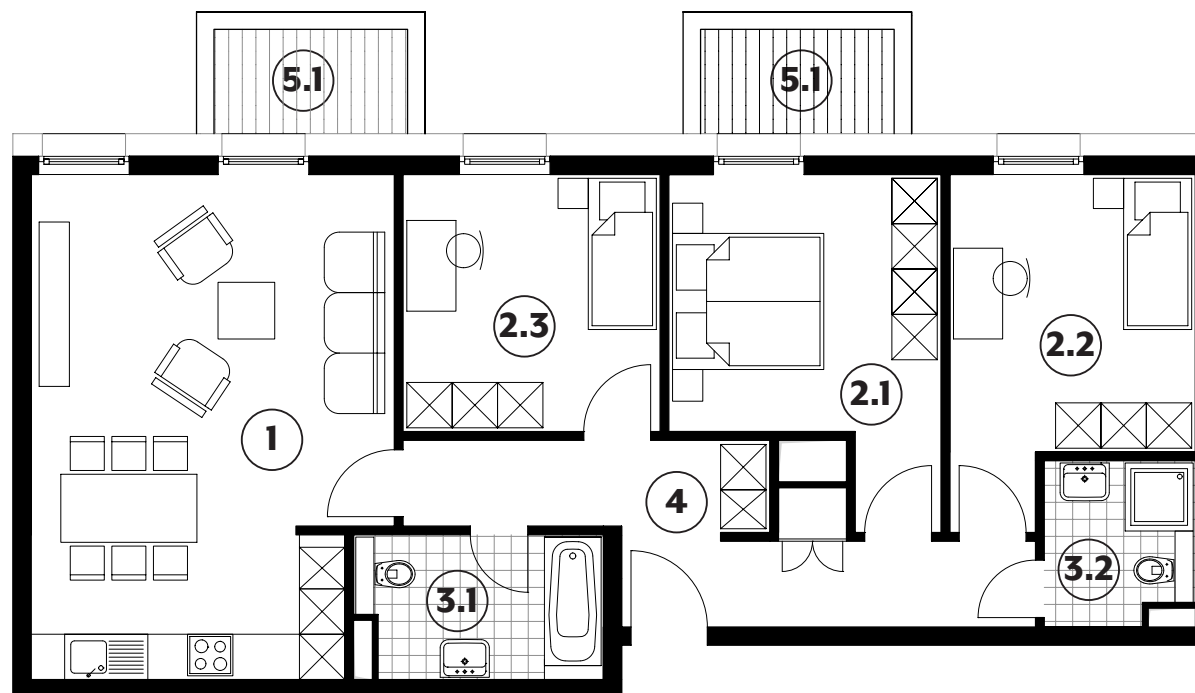
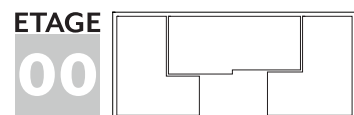
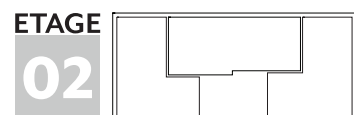
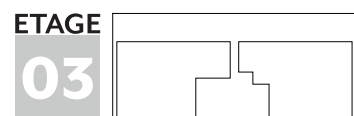
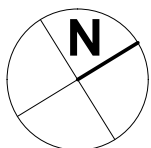


1	séjour / cuisine	30,65m²	3.1	salle de bains	6,00m²
2.1	chambre	13,75m²	3.2	salle de douche	4,15m²
2.2	chambre	13,10m²	4	couloir	12,00m²
2.3	chambre	11,55m²	5.1	terrasse	9,05m²

97,32m²

APPARTEMENT TYPE

077

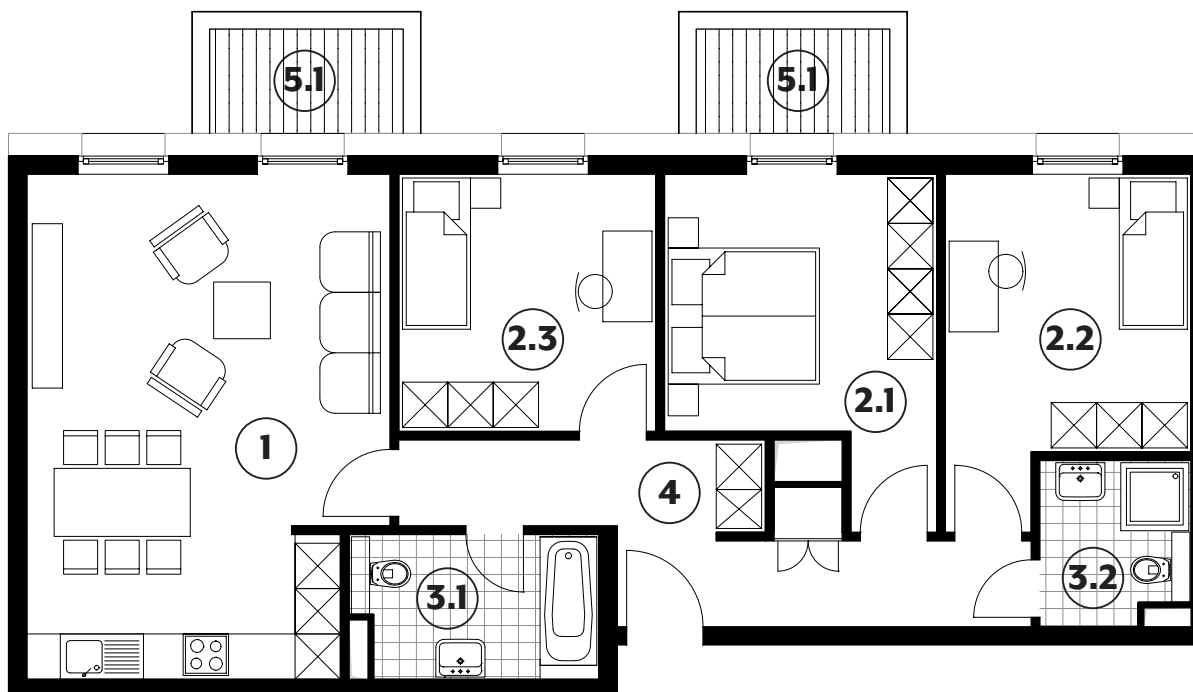
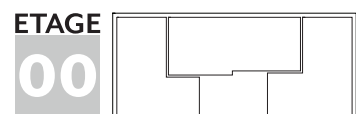
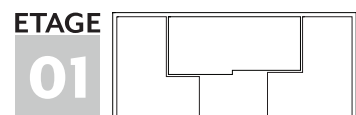
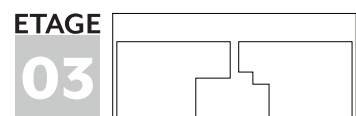
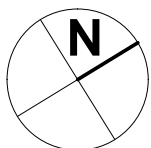


1	séjour / cuisine	30,65m²	3.1	salle de bains	6,00m²
2.1	chambre	13,75m²	3.2	salle de douche	4,15m²
2.2	chambre	13,10m²	4	couloir	12,00m²
2.3	chambre	11,55m²	5.1	balcon	3,50m²

97,32m²

APPARTEMENT TYPE

085

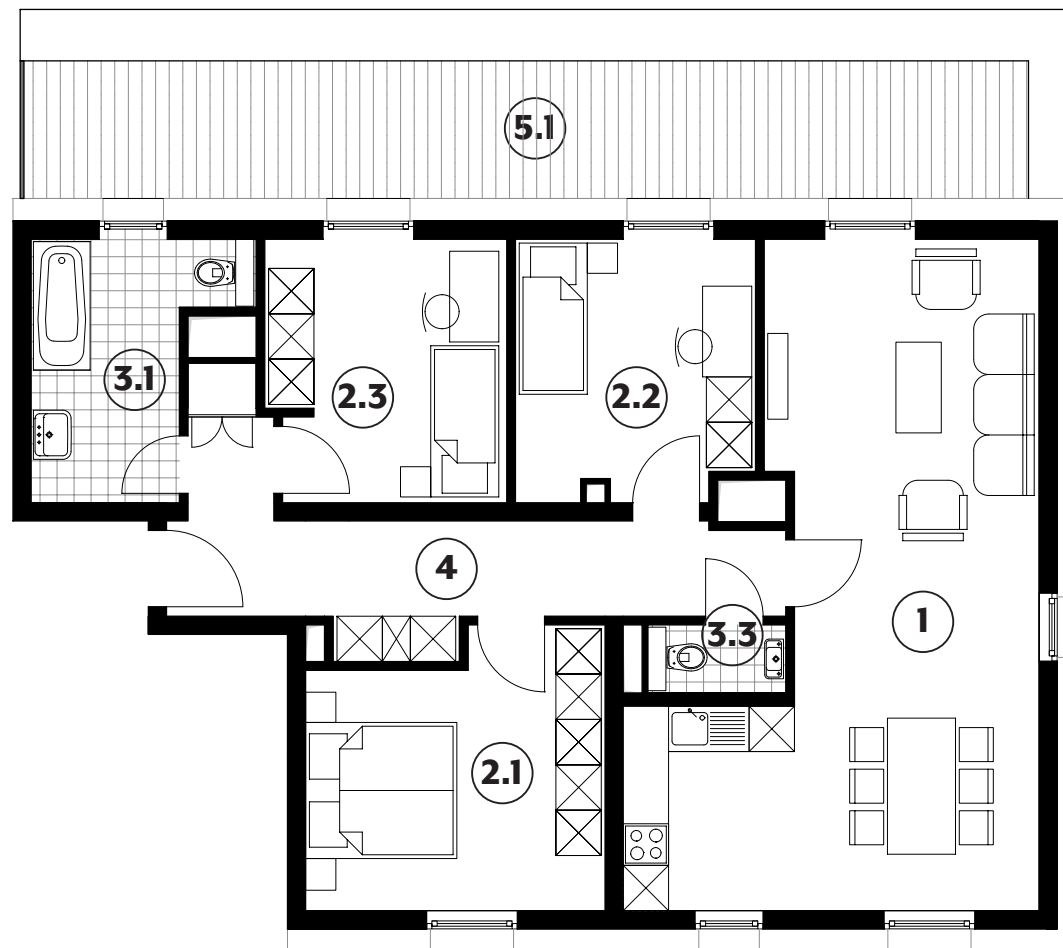
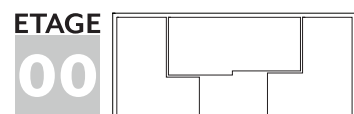
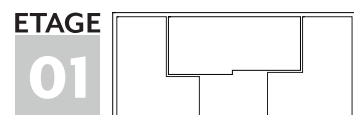
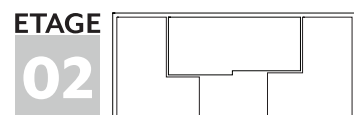
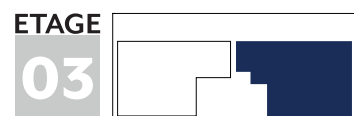
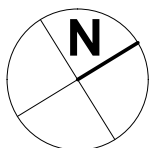


1	séjour / cuisine	30,65m²	3.1	salle de bains	6,00m²
2.1	chambre	13,75m²	3.2	salle de douche	4,15m²
2.2	chambre	13,10m²	4	couloir	12,00m²
2.3	chambre	11,55m²	5.1	balcont	3,50m²

97,32m²

APPARTEMENT TYPE

093



1 séjour / cuisine 31,20m²

2.1 chambre 14,75m²

2.2 chambre 11,00m²

2.3 chambre 6,40m²

3.1 salle de bains 31,20m²

3.2 w.c. 14,75m²

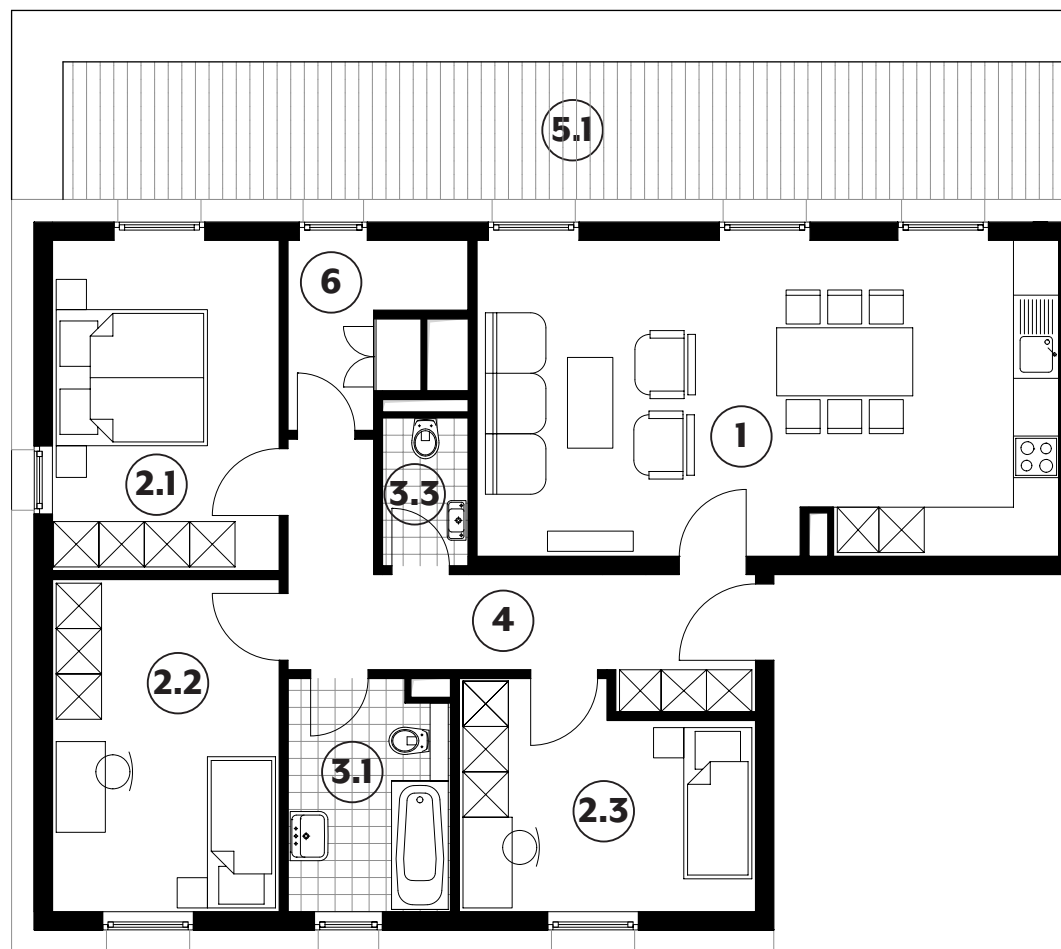
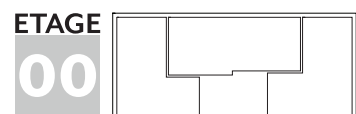
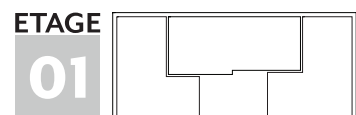
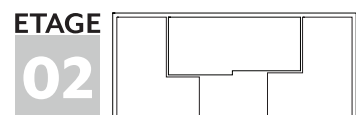
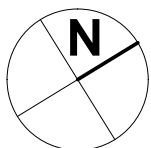
4 couloir 11,00m²

5.1 terrasse 24,10m²

101,53m²

APPARTEMENT TYPE

094



1 séjour / cuisine **31,85m²**

2.1 chambre **13,10m²**

2.2 chambre **13,15m²**

2.3 chambre **11,00m²**

3.1 salle de bains **6,40m²**

3.2 w.c. **2,20m²**

4 couloir **10,85m²**

5.1 terrasse **24,10m²**

6 débarras **4,00m²**

99,35m²

PLAN DE SITUATION





Société Nationale des
Habitations à Bon Marché

2b, rue Kalchesbruck
L-1852 Luxembourg

Jessica Gaspar
Tél. (+352) 448292 - 556
jessica.gaspar@snhbm.lu

snhbm.lu