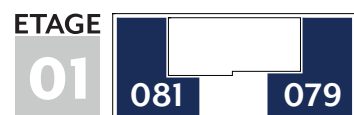
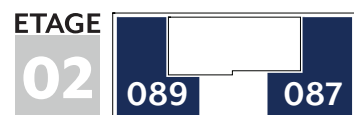
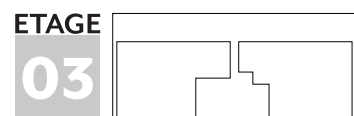


Résidence Ebora



APPARTEMENT TYPE

2 CHAMBRES



Type	Etage	Surface Utile	surface balcon / terrasse	surface cave	prix de vente subventionné TVA 3%
071	RDC	85,23m ²	9,05m ²	3,91m ²	233.564 €
073	RDC	79,54m ²	9,05m ²	4,40m ²	223.573 €
079	1 ^{er}	85,23m ²	3,50m ²	4,54m ²	236.551 €
081	1 ^{er}	79,54m ²	3,50m ²	4,62m ²	226.148 €
087	2 ^{ème}	85,23m ²	3,50m ²	4,88m ²	241.495 €
089	2 ^{ème}	79,54m ²	3,50m ²	3,58m ²	230.886 €

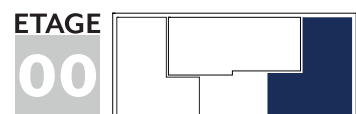
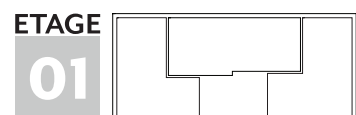
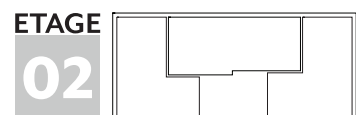
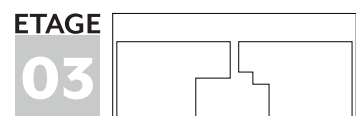
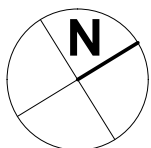
- les surfaces inscrites dans ce tableau peuvent subir de légères modifications dues aux nécessités techniques de la construction.
- surface utile = surface calculée à l'intérieur des murs extérieurs.

Tous les appartements sont équipés de :

- stores a lamelles motorisés
- triple vitrage

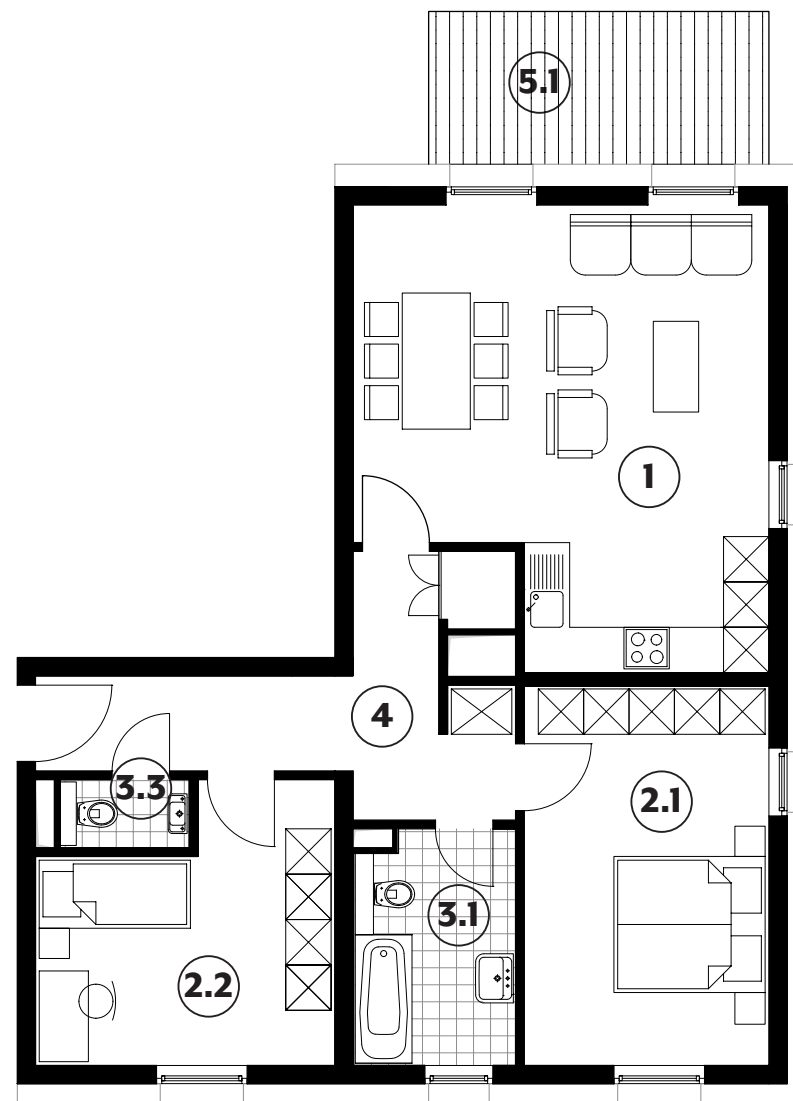
APPARTEMENT TYPE

071



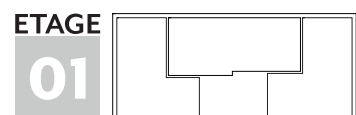
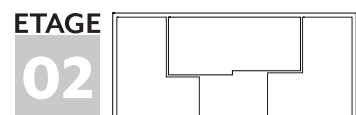
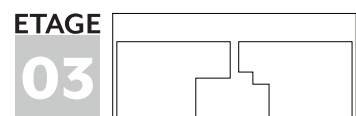
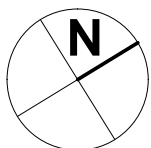
1	séjour / cuisine	30,10m²
2.1	chambre	16,20m²
2.2	chambre	12,75m²
3.1	salle de bains	6,50m²
3.3	w.c.	1,50m²
4	couloir	11,05m²
5.1	terrasse	9,05m²

85,23m²



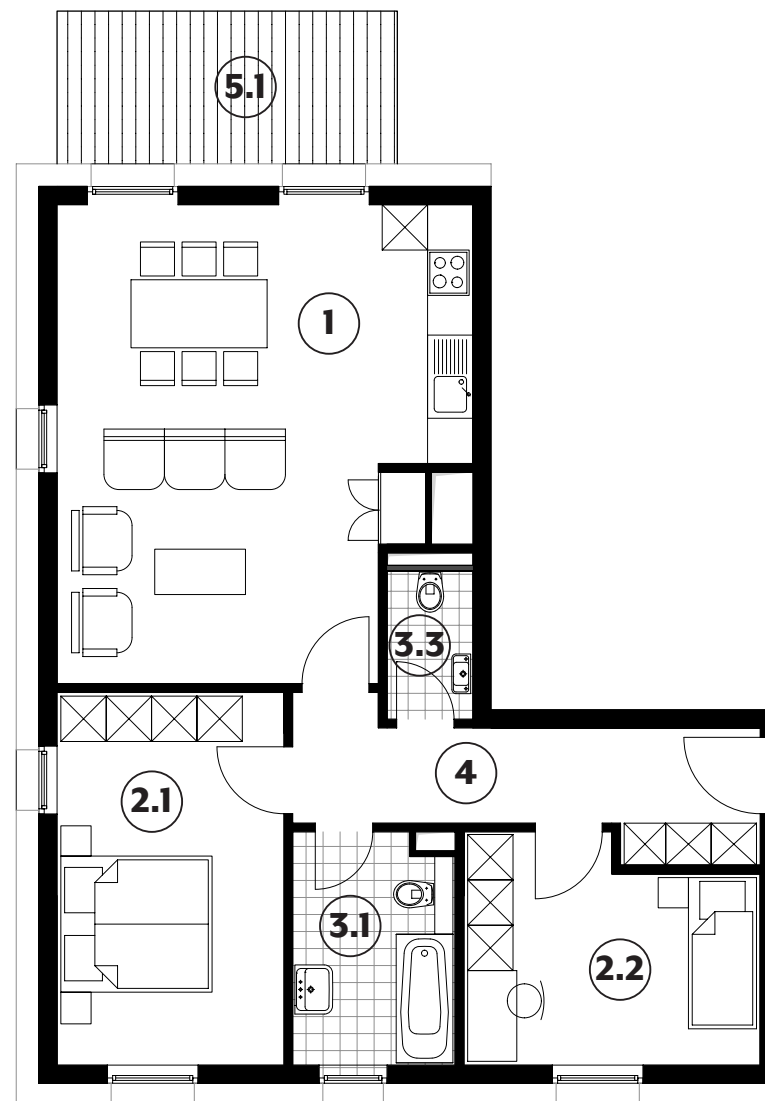
APPARTEMENT TYPE

073



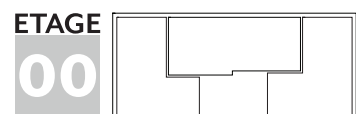
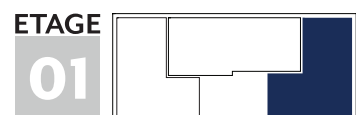
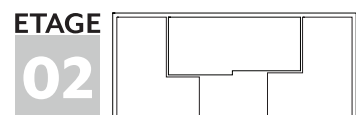
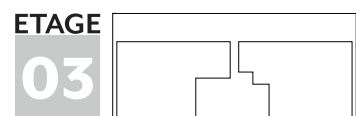
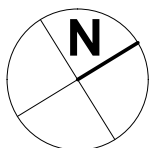
1	séjour / cuisine	31,20m²
2.1	chambre	14,75m²
2.2	chambre	11,00m²
3.1	salle de bains	6,40m²
3.3	w.c.	2,20m²
4	couloir	9,35m²
5.1	terrasse	9,05m²

79,54m²



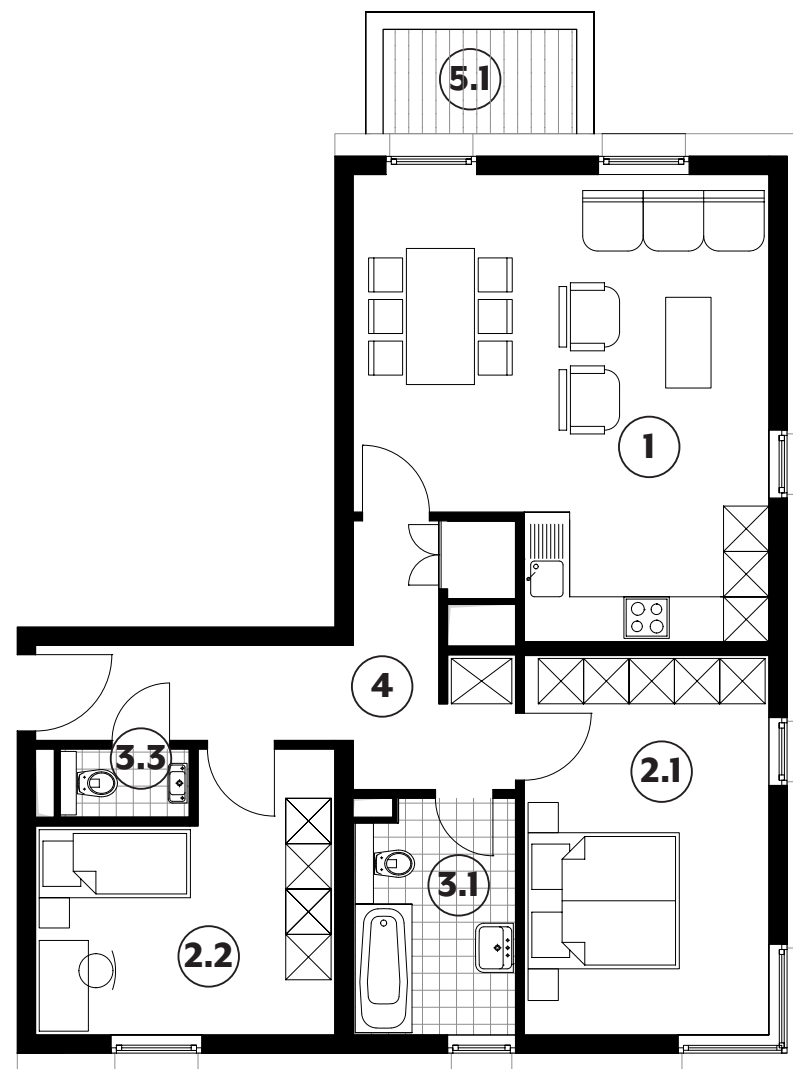
APPARTEMENT TYPE

079



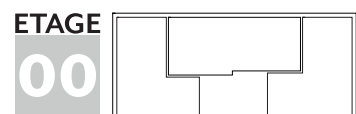
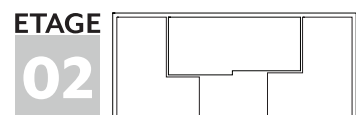
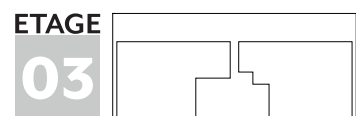
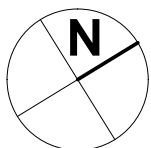
1	séjour / cuisine	30,10m²
2.1	chambre	16,20m²
2.2	chambre	12,75m²
3.1	salle de bains	6,50m²
3.3	w.c.	1,50m²
4	couloir	11,05m²
5.1	balcon	3,50m²

85,23m²



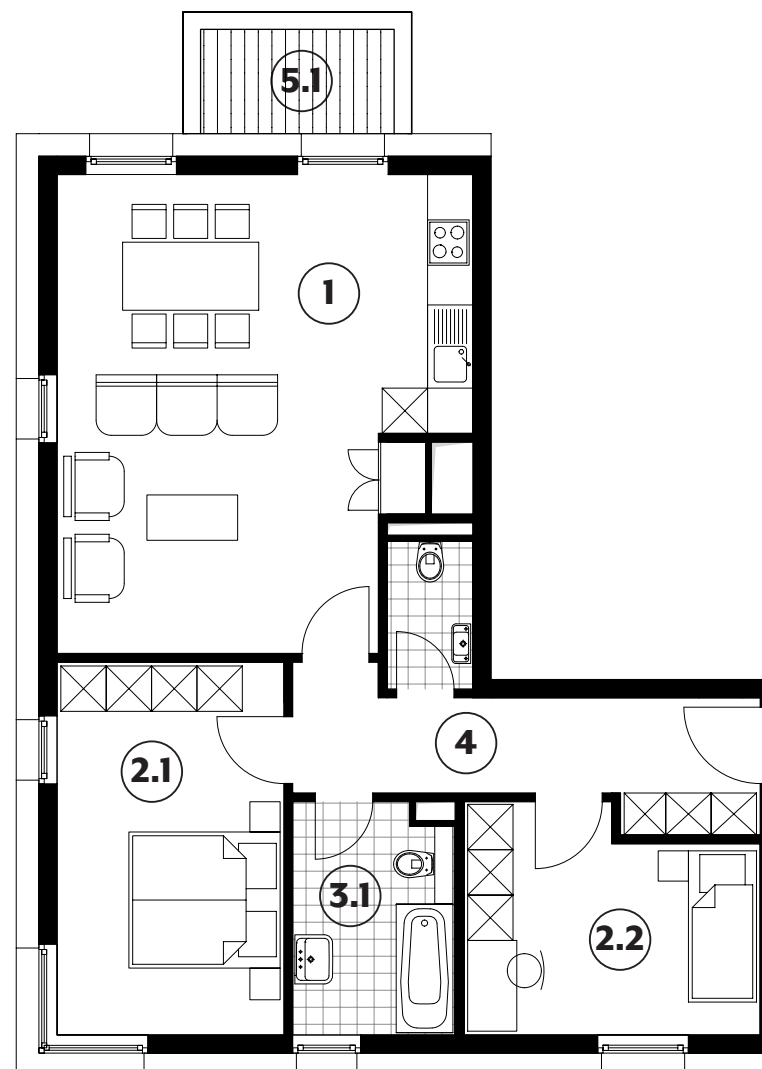
APPARTEMENT TYPE

081



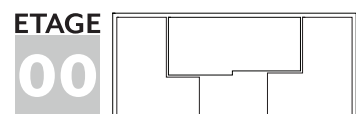
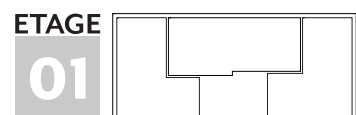
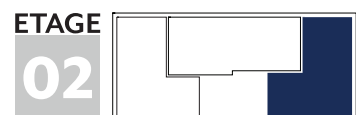
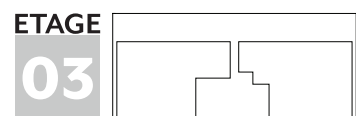
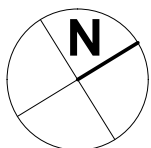
1	séjour / cuisine	31,20m²
2.1	chambre	14,75m²
2.2	chambre	11,00m²
3.1	salle de bains	6,40m²
3.3	w.c.	2,20m²
4	couloir	9,35m²
5.1	balcon	3,50m²

79,54m²



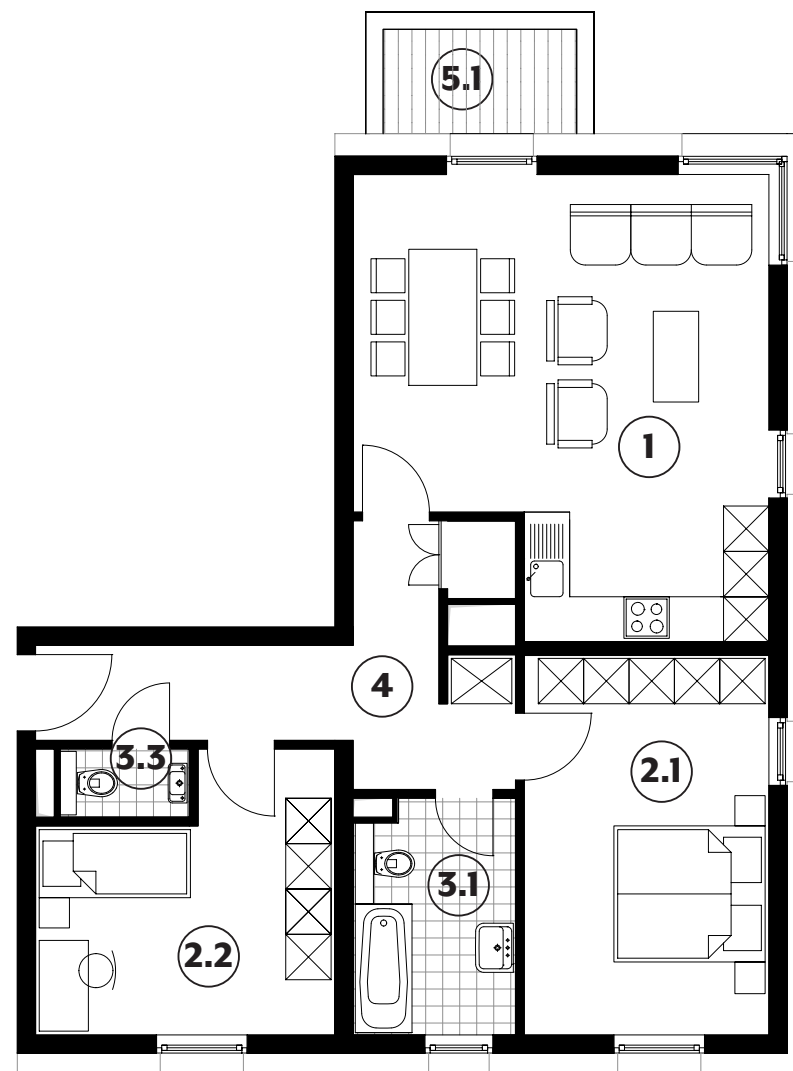
APPARTEMENT TYPE

087



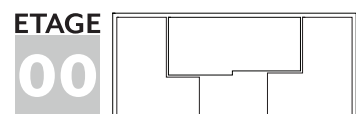
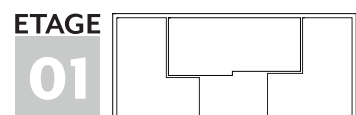
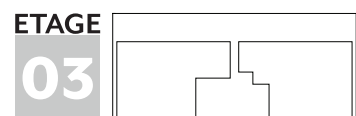
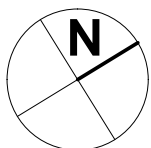
1	séjour / cuisine	30,10m²
2.1	chambre	16,20m²
2.2	chambre	12,75m²
3.1	salle de bains	6,50m²
3.3	w.c.	1,50m²
4	couloir	11,05m²
5.1	balcon	3,50m²

85,23m²



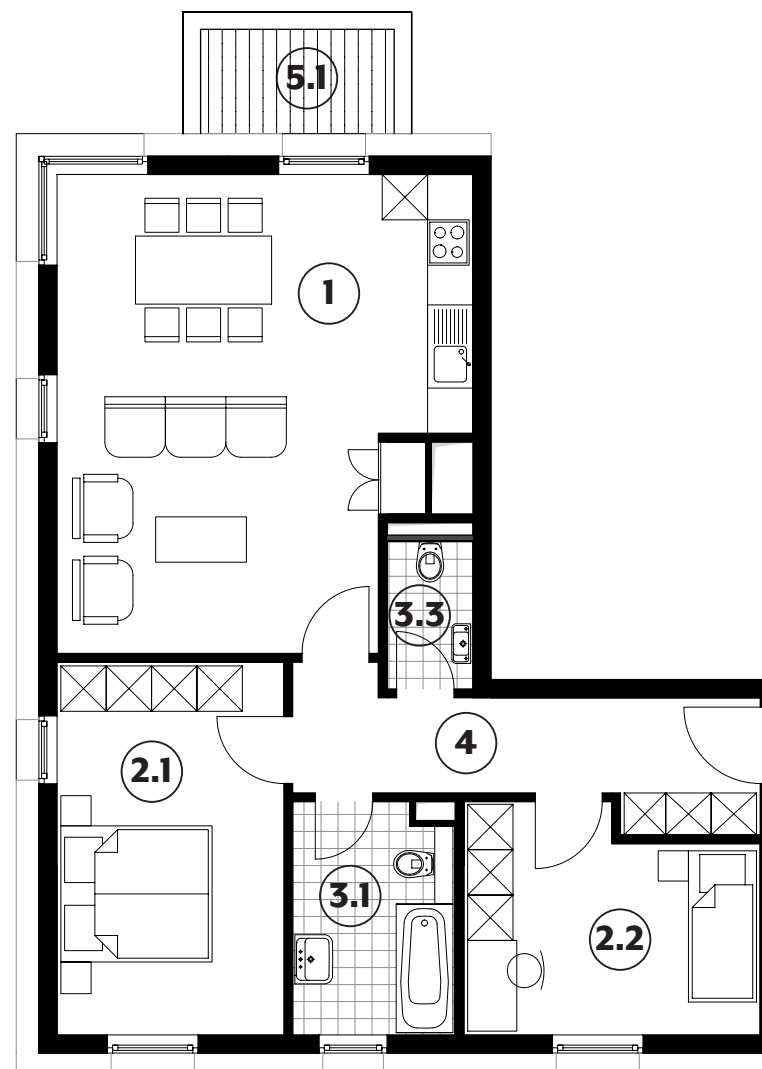
APPARTEMENT TYPE

089



1	séjour / cuisine	31,20m²
2.1	chambre	14,75m²
2.2	chambre	11,00m²
3.1	salle de bains	6,40m²
3.3	w.c.	2,20m²
4	couloir	9,35m²
5.1	balcon	3,50m²

79,54m²



APPARTEMENT TYPE

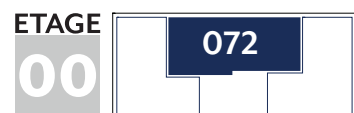
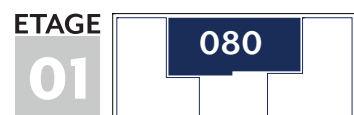
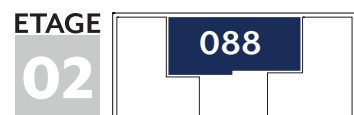
3 CHAMBRES

Type	Etage	Surface Utile	surface balcon / terrasse	surface cave	prix de vente subventionné TVA 3%
072	RDC	97,32m ²	9,05m ²	4,62m ²	273.322 €
080	1 ^{er}	97,32m ²	7,00m ²	4,92m ²	280.841 €
088	2 ^{ème}	97,32m ²	7,00m ²	4,66m ²	286.609 €
095	3 ^{ème}	101,53m ²	24,10m ²	6,83m ²	317.715 €
096	3 ^{ème}	99,35m ²	24,10m ²	5,21m ²	313.389 €

- les surfaces inscrites dans ce tableau peuvent subir de légères modifications dues aux nécessités techniques de la construction.
- surface utile = surface calculée à l'intérieur des murs extérieurs.

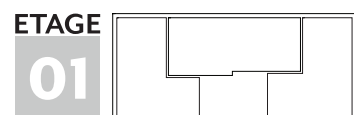
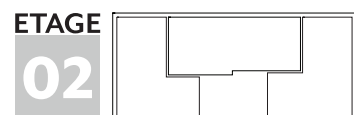
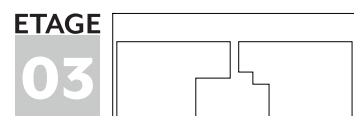
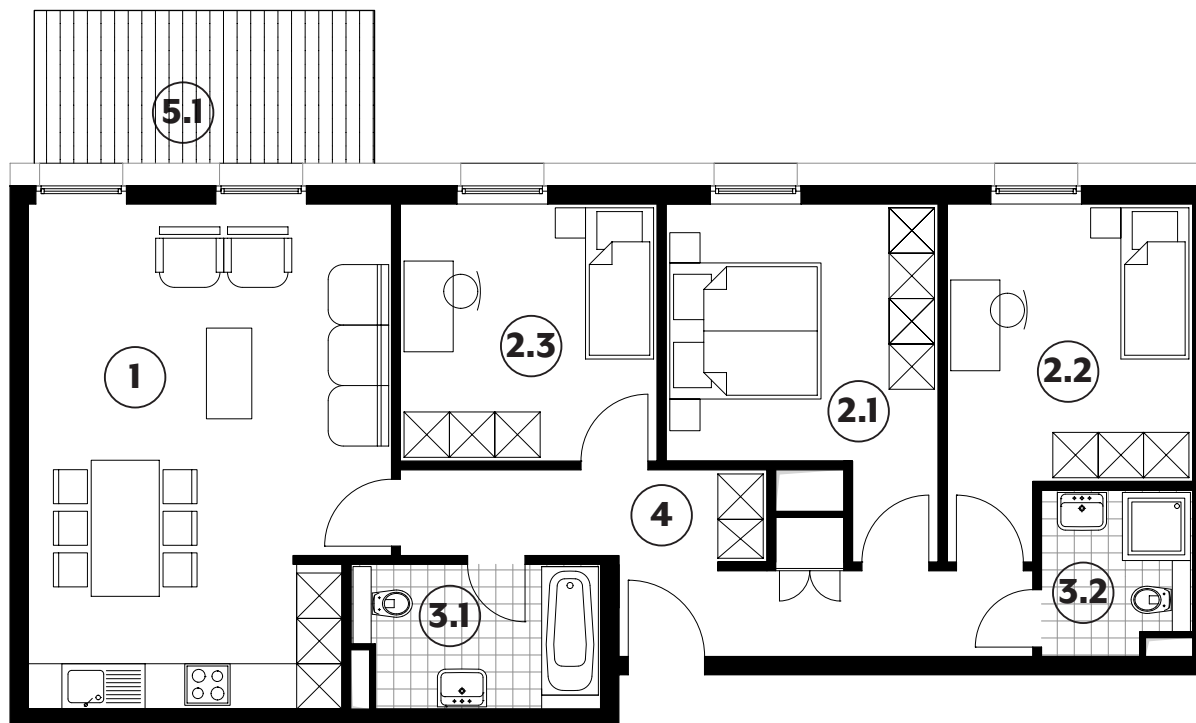
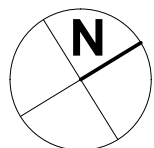
Tous les appartements sont équipés de :

- stores a lamelles motorisés
- triple vitrage



APPARTEMENT TYPE

072

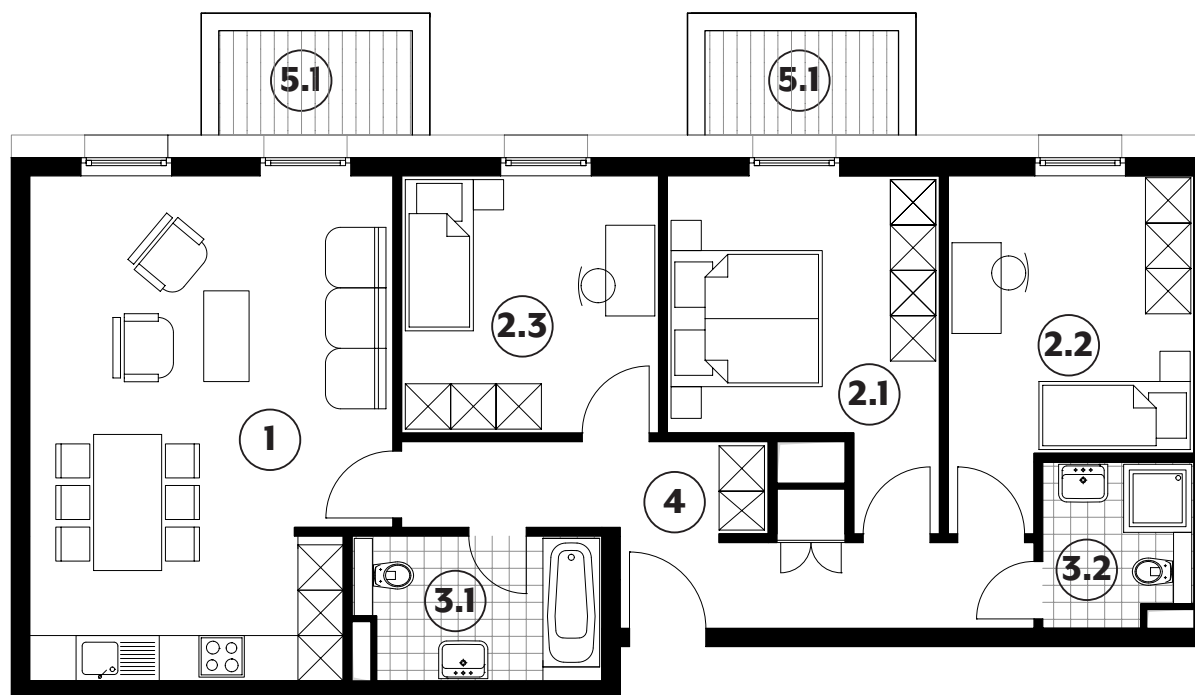
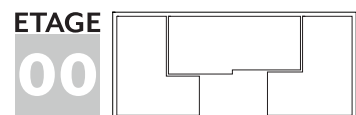
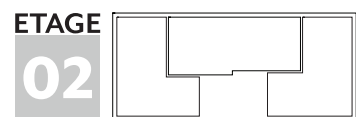
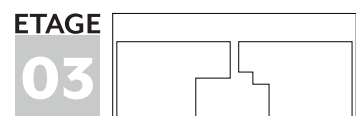
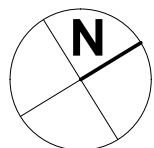


1	séjour / cuisine	30,65m²	3.1	salle de bains	6,00m²
2.1	chambre	13,75m²	3.2	salle de douche	4,15m²
2.2	chambre	13,10m²	4	couloir	12,00m²
2.3	chambre	11,55m²	5.1	terrasse	9,05m²

97,32m²

APPARTEMENT TYPE

080

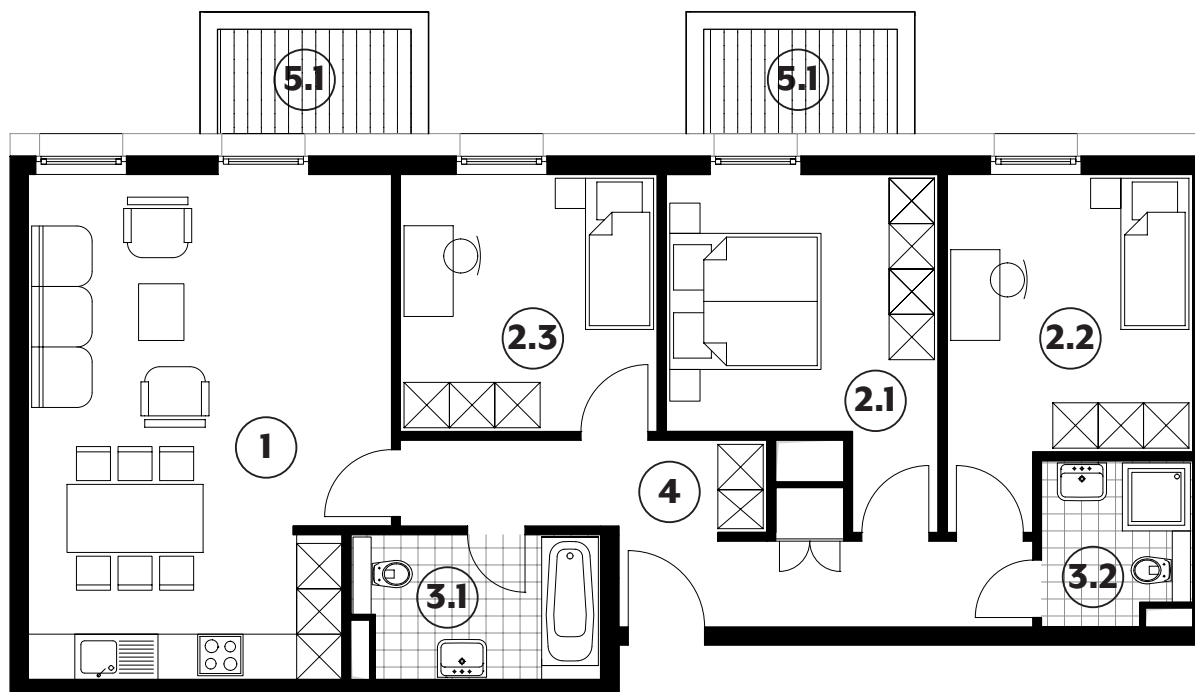
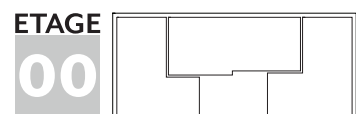
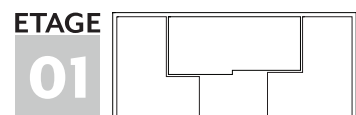
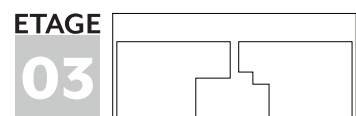
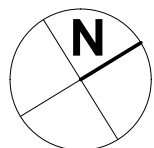


1	séjour / cuisine	30,65m²	3.1	salle de bains	6,00m²
2.1	chambre	13,75m²	3.2	salle de douche	4,15m²
2.2	chambre	13,10m²	4	couloir	12,00m²
2.3	chambre	11,55m²	5.1	balcon	3,50m²

97,32m²

APPARTEMENT TYPE

088

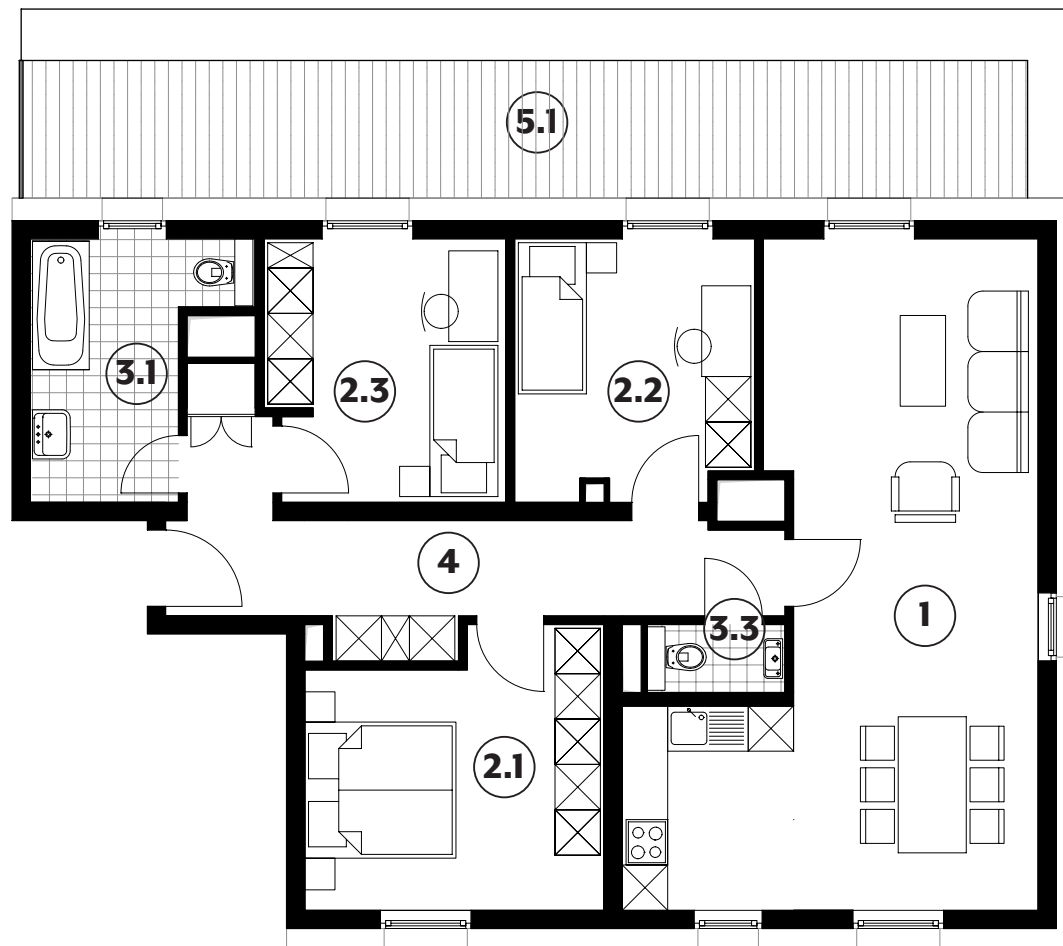
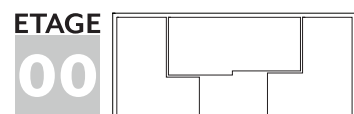
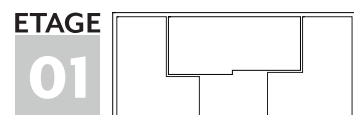
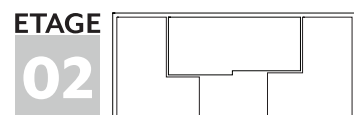
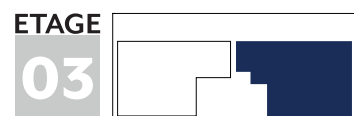
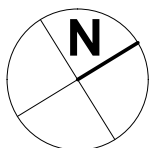


1	séjour / cuisine	30,65m²	3.1	salle de bains	6,00m²
2.1	chambre	13,75m²	3.2	salle de douche	4,15m²
2.2	chambre	13,10m²	4	couloir	12,00m²
2.3	chambre	11,55m²	5.1	balcont	3,50m²

97,32m²

APPARTEMENT TYPE

095



1 séjour / cuisine 31,20m²

2.1 chambre 14,75m²

2.2 chambre 11,00m²

2.3 chambre 6,40m²

3.1 salle de bains 31,20m²

3.2 w.c. 14,75m²

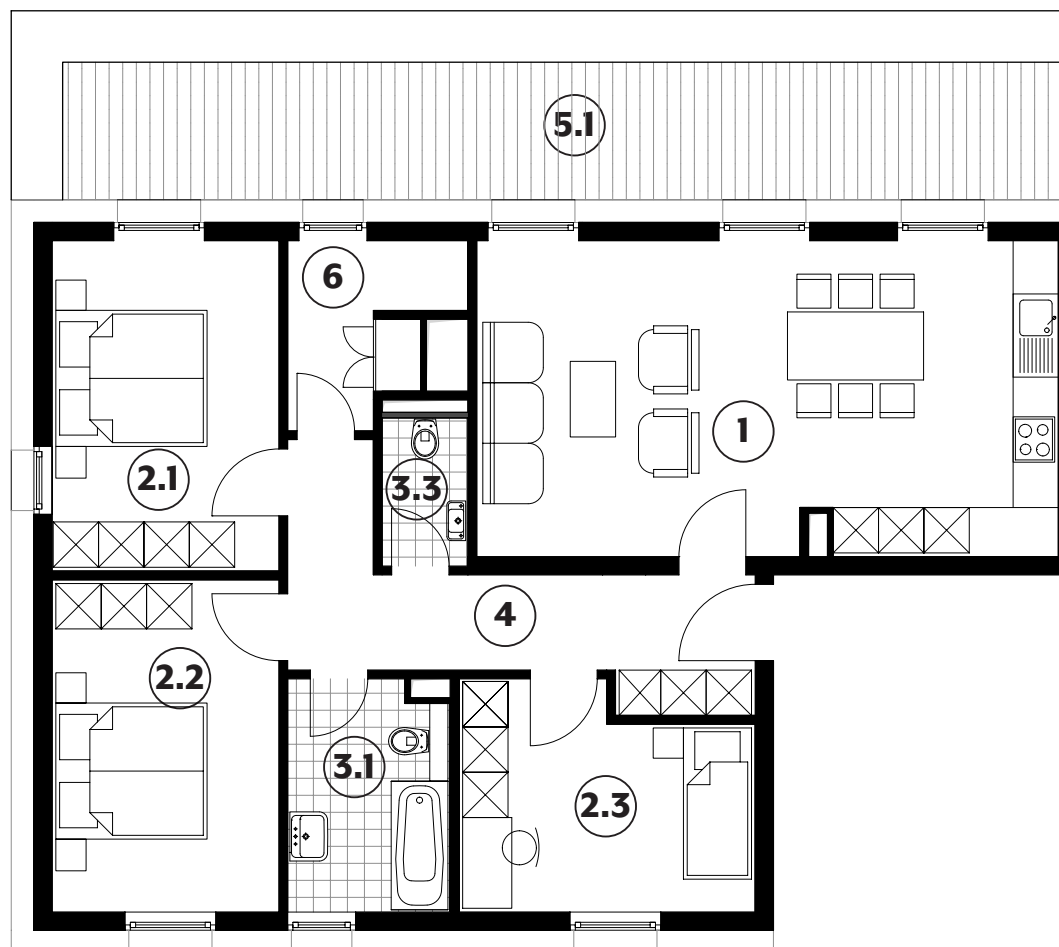
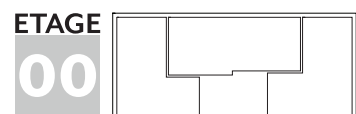
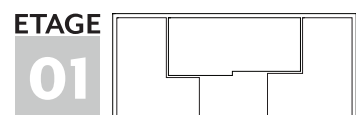
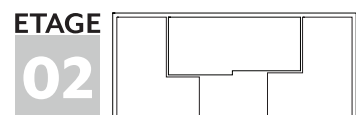
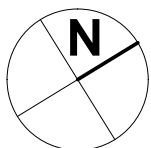
4 couloir 11,00m²

5.1 terrasse 24,10m²

101,53m²

APPARTEMENT TYPE

096



1 séjour / cuisine 31,85m²

2.1 chambre 13,10m²

2.2 chambre 13,15m²

2.3 chambre 11,00m²

3.1 salle de bains 6,40m²

3.2 w.c. 2,20m²

4 couloir 10,85m²

5.1 terrasse 24,10m²

6 débarras 4,00m²

99,35m²

PLAN DE SITUATION





Société Nationale des
Habitations à Bon Marché

2b, rue Kalchesbruck
L-1852 Luxembourg

Jessica Gaspar
Tél. (+352) 448292 - 556
jessica.gaspar@snhbm.lu

snhbm.lu