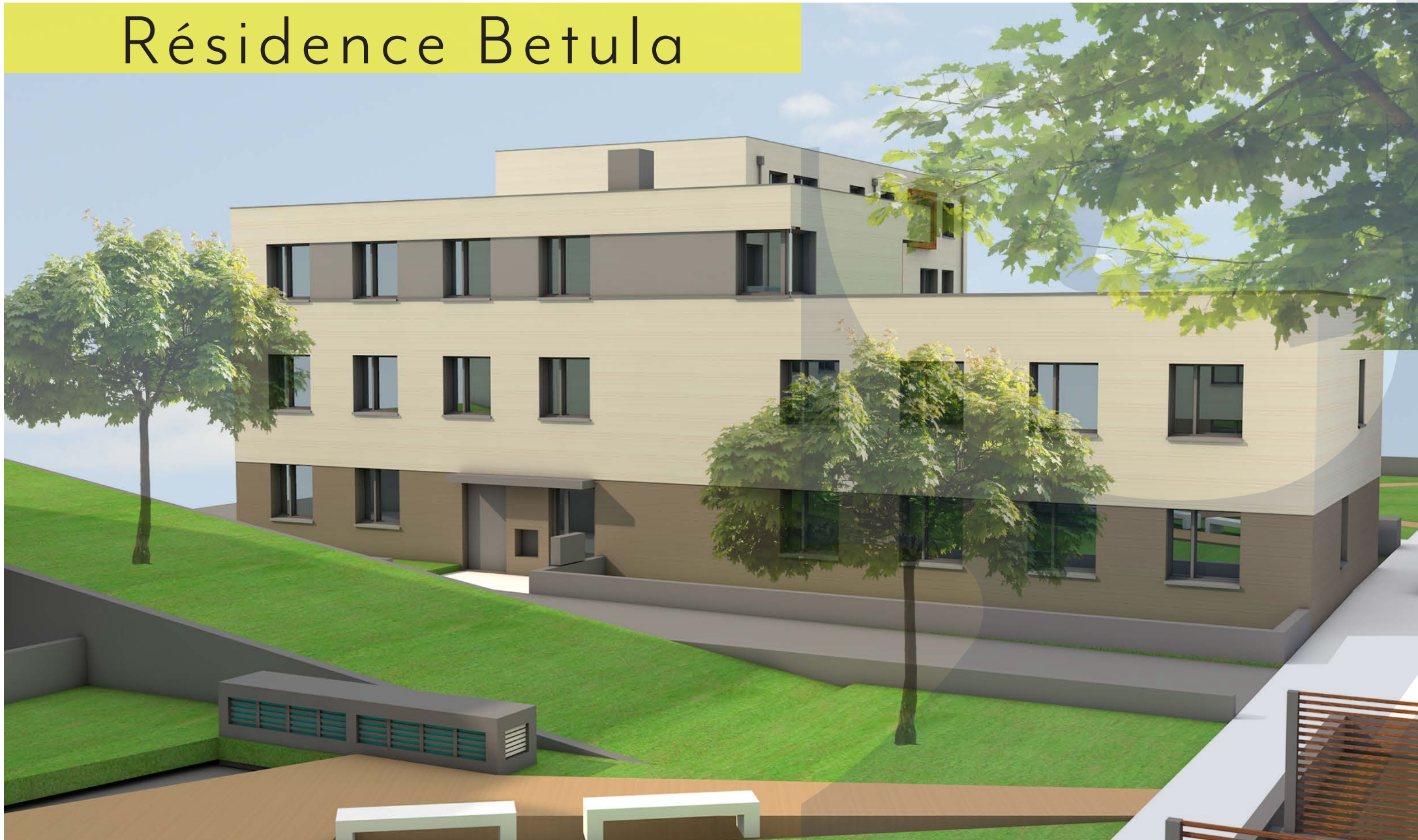


Résidence Betula

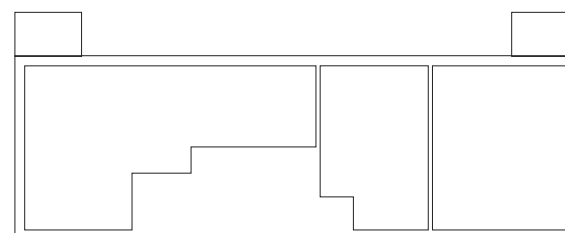
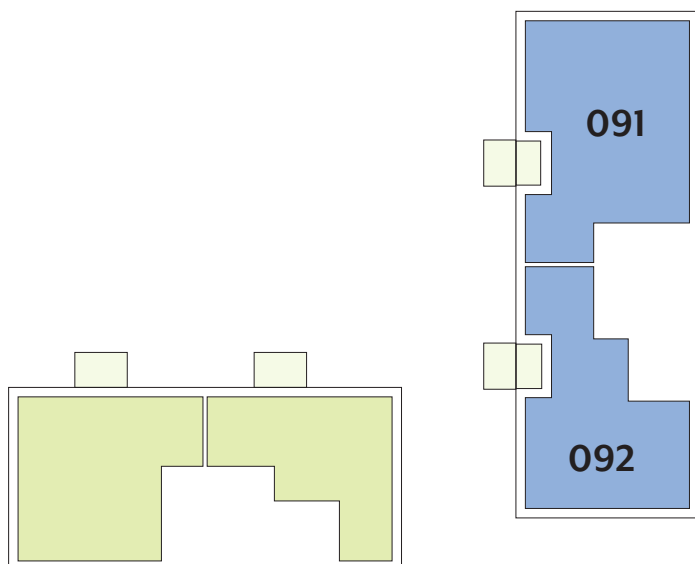
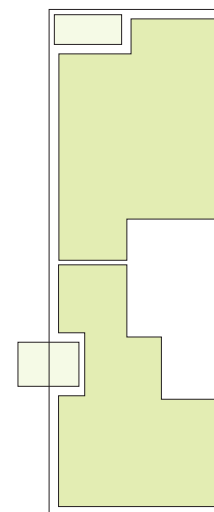
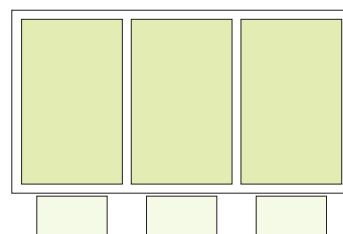
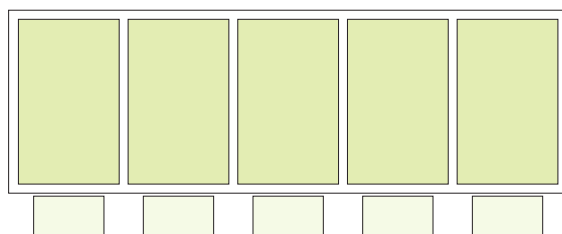


APPARTEMENTS

REZ-DE-CHAUSSÉE

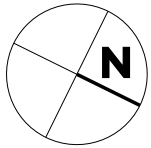
| Type | Surface Utile | surface terrasse | surface cave | prix de vente subventionné TVA 3% * |
|------------|----------------------|--------------------|--------------------|-------------------------------------|
| 091 | 111,23m ² | 8,25m ² | 6,40m ² | 351.253 € ** |
| 092 | 89,18 m ² | 8,25m ² | 6,30m ² | 270.437 € |

- les surfaces inscrites dans ce tableau peuvent subir de légères modifications dues aux nécessités techniques de la construction.
- surface utile = surface calculée à l'intérieur des murs extérieurs.
- * primes ACE sont déjà déduites (uniquement pour les acquéreurs bénéficiant d'une prime de construction de l'Etat.)
- ** primes ACE et remboursement TVA sont déjà déduites. (limite de 50.000€ de TVA selon la loi est atteinte)



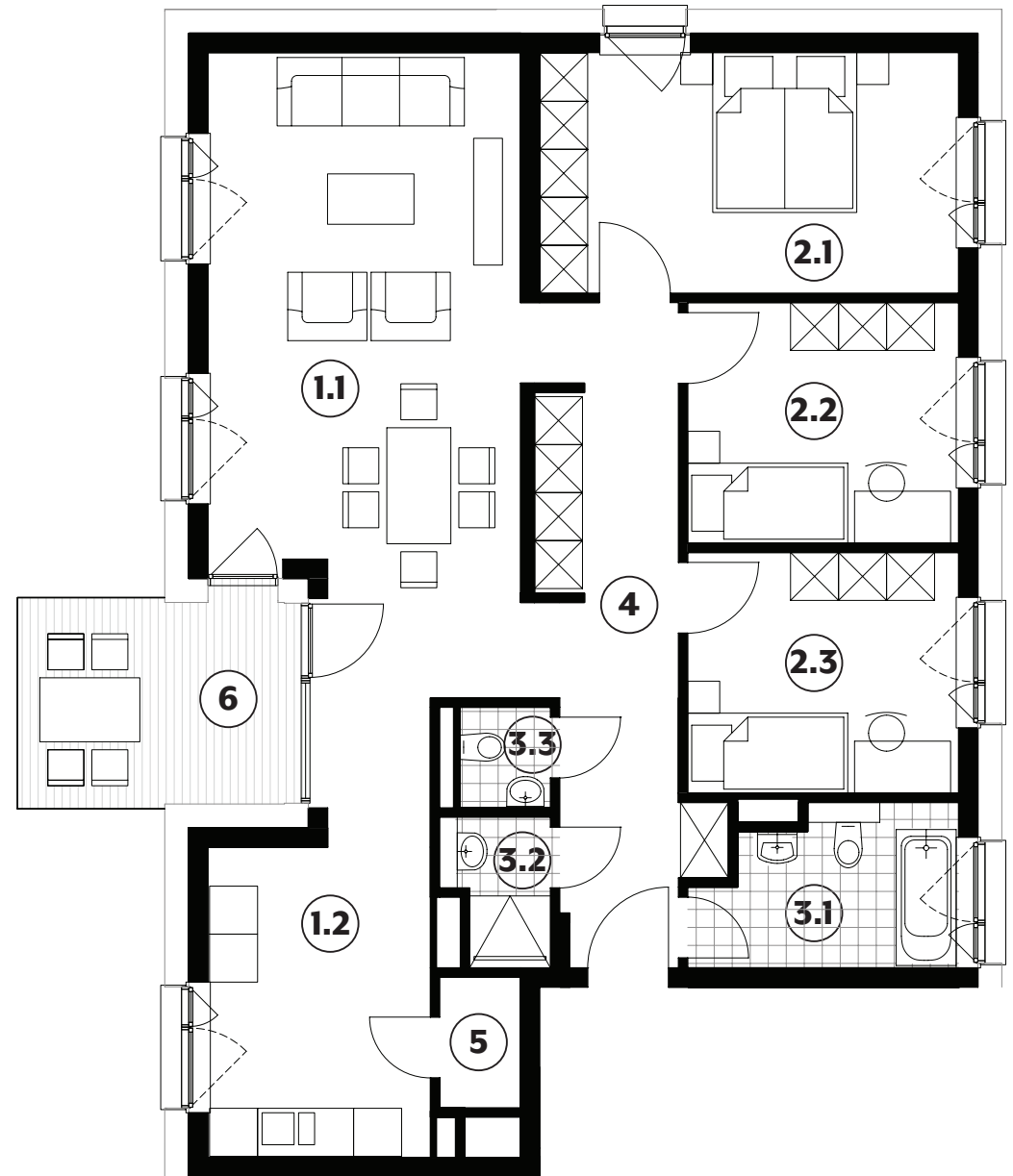
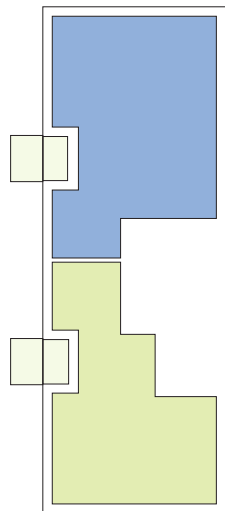
APPARTEMENT TYPE

091



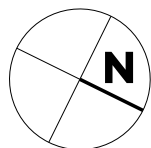
| | | |
|------------|-----------------|---------------------|
| 1.1 | séjour | 31,90m ² |
| 1.2 | cuisine | 10,80m ² |
| 2.1 | chambre | 15,75m ² |
| 2.2 | chambre | 10,20m ² |
| 2.3 | chambre | 10,20m ² |
| 3.1 | salle de bains | 6,05m ² |
| 3.2 | salle de douche | 2,25m ² |
| 3.3 | w.c. | 1,45m ² |
| 4 | couloir | 14,85m ² |
| 5 | débarras | 1,65m ² |
| 6 | terrasse | 8,25m ² |
| 7 | jardin | 53,00m ² |

111,23m²



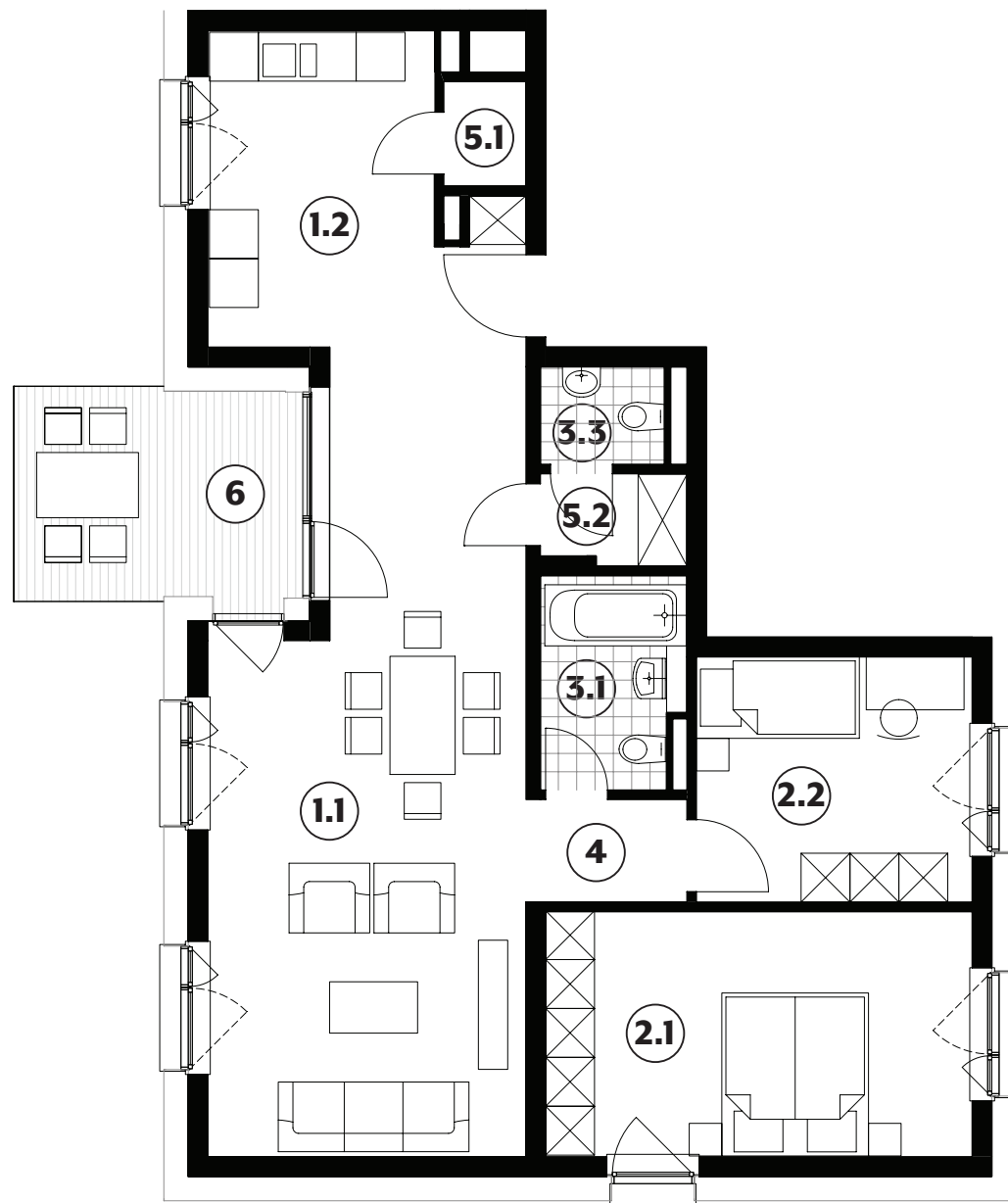
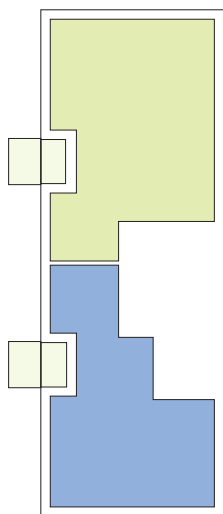
APPARTEMENT TYPE

092



| | | |
|------------|----------------|---------------------|
| 1.1 | séjour | 35,30m ² |
| 1.2 | cuisine | 10,80m ² |
| 2.1 | chambre | 15,75m ² |
| 2.2 | chambre | 10,20m ² |
| 3.1 | salle de bains | 4,50m ² |
| 3.3 | w.c. | 1,85m ² |
| 4 | couloir | 2,50m ² |
| 5.1 | débarras | 1,30m ² |
| 5.2 | débarras | 2,05m ² |
| 6 | terrasse | 8,25m ² |
| 7 | jardin | 52,35m ² |

89,18m²

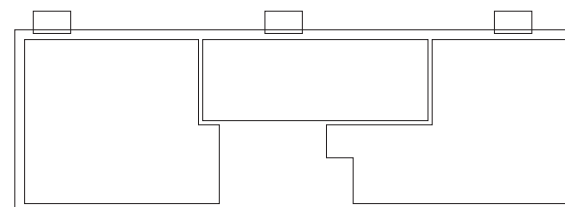
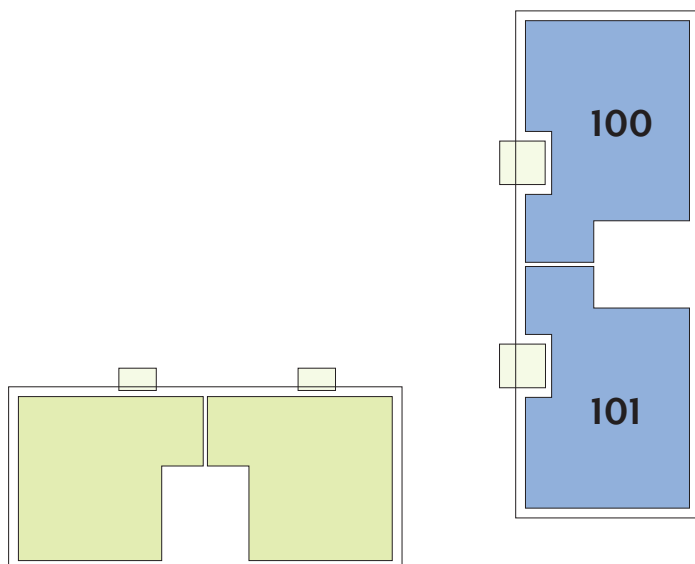
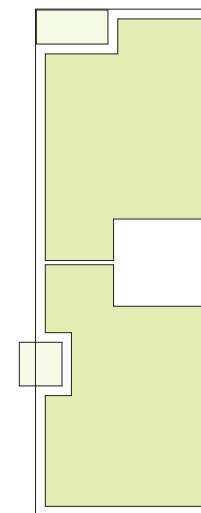
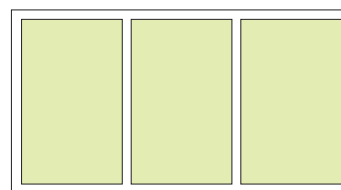
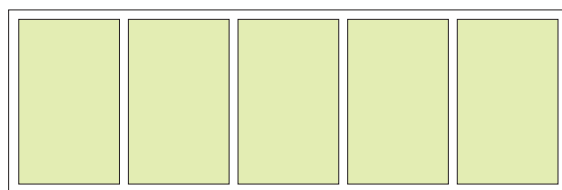


APPARTEMENTS

1^{ER} ÉTAGE

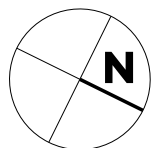
| Type | Surface Utile | surface balcon | surface cave | prix de vente subventionné TVA 3% * |
|------------|----------------------|--------------------|--------------------|-------------------------------------|
| 100 | 116,55m ² | 6,45m ² | 6,40m ² | 376.876 €** |
| 101 | 116,55m ² | 6,45m ² | 6,40m ² | 376.876 €** |

- les surfaces inscrites dans ce tableau peuvent subir de légères modifications dues aux nécessités techniques de la construction.
- surface utile = surface calculée à l'intérieur des murs extérieurs.
- * primes ACE sont déjà déduites (uniquement pour les acquéreurs bénéficiant d'une prime de construction de l'Etat.)
- ** primes ACE et remboursement TVA sont déjà déduites. (limite de 50.000€ de TVA selon la loi est atteinte)



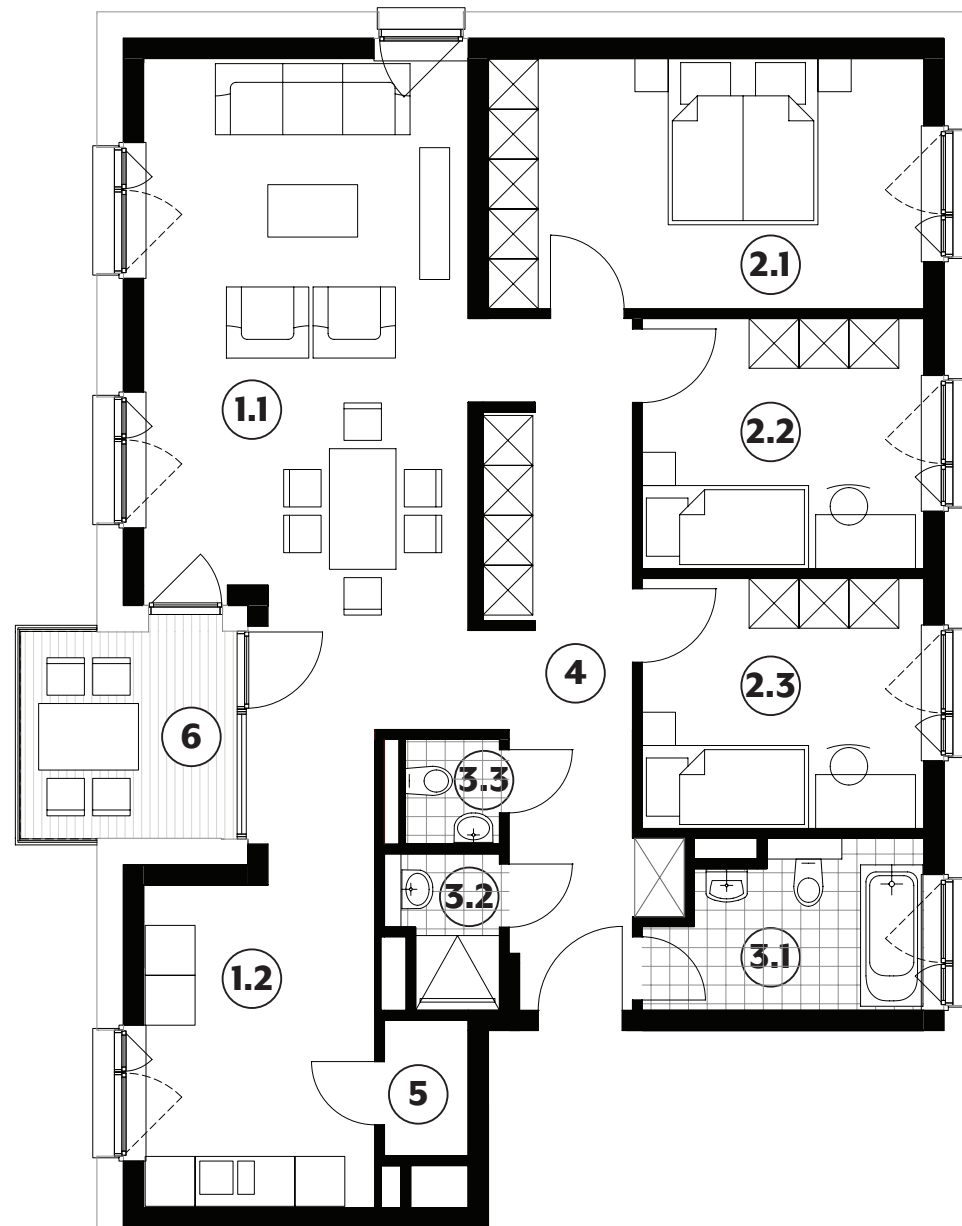
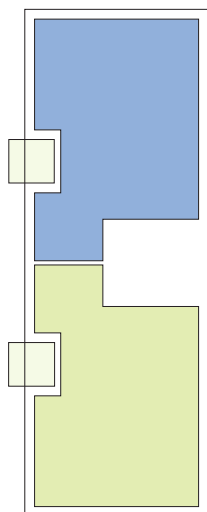
APPARTEMENT TYPE

100



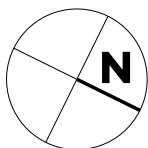
| | | |
|------------|-----------------|---------------------|
| 1.1 | séjour | 32,25m ² |
| 1.2 | cuisine | 10,80m ² |
| 2.1 | chambre | 15,75m ² |
| 2.2 | chambre | 10,20m ² |
| 2.3 | chambre | 10,20m ² |
| 3.1 | salle de bains | 6,05m ² |
| 3.2 | salle de douche | 2,40m ² |
| 3.3 | w.c. | 1,45m ² |
| 4 | couloir | 14,15m ² |
| 5 | débarras | 1,65m ² |
| 6 | balcon | 6,45m ² |

116,55m²



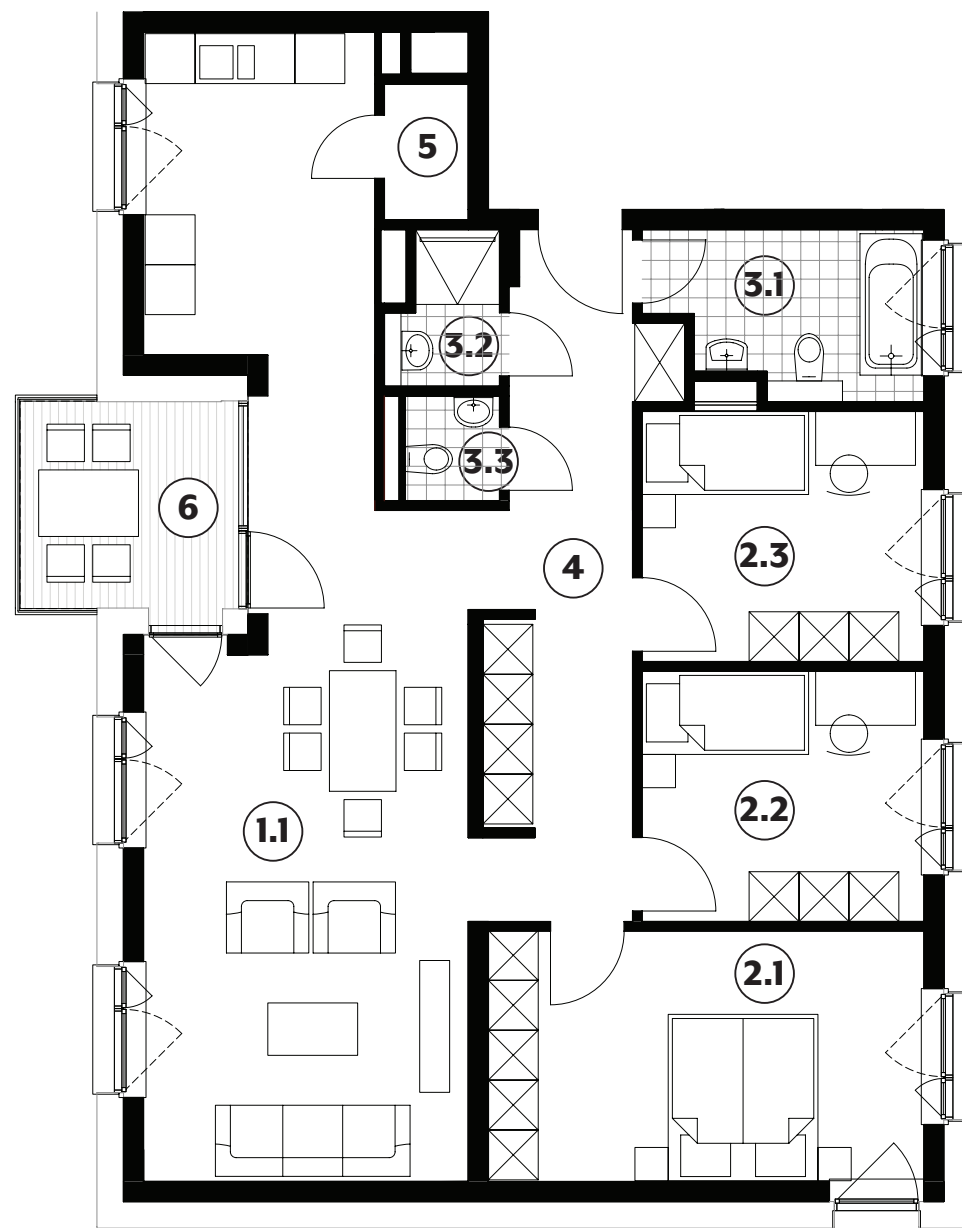
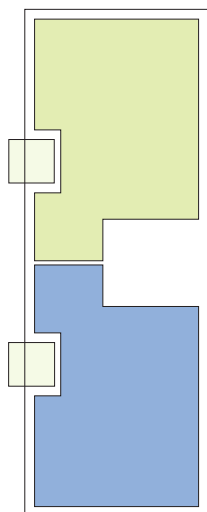
APPARTEMENT TYPE

101



| | | |
|------------|-----------------|---------------------|
| 1.1 | séjour | 31,90m ² |
| 1.2 | cuisine | 10,80m ² |
| 2.1 | chambre | 15,75m ² |
| 2.2 | chambre | 10,20m ² |
| 2.3 | chambre | 10,20m ² |
| 3.1 | salle de bains | 6,05m ² |
| 3.2 | salle de douche | 2,40m ² |
| 3.3 | w.c. | 1,45m ² |
| 4 | couloir | 14,15m ² |
| 5 | débarras | 1,65m ² |
| 6 | balcon | 6,45m ² |

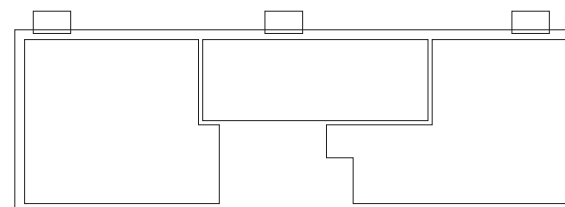
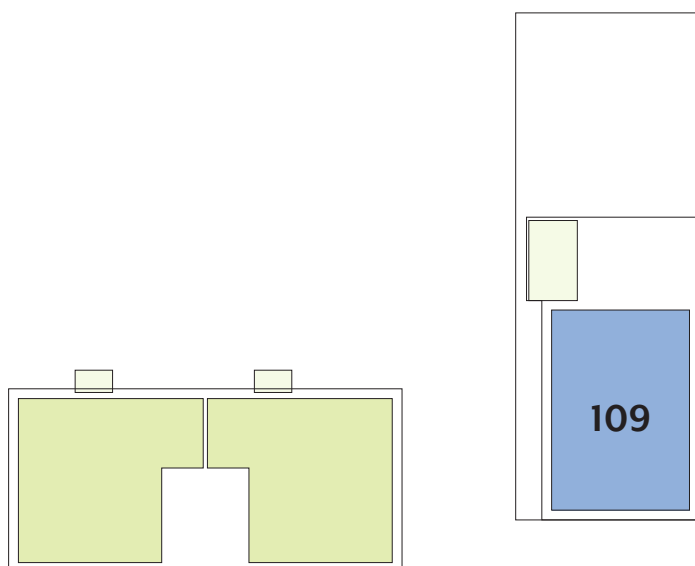
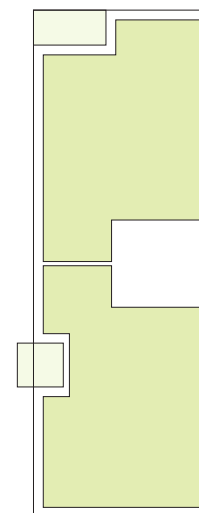
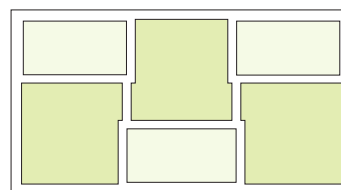
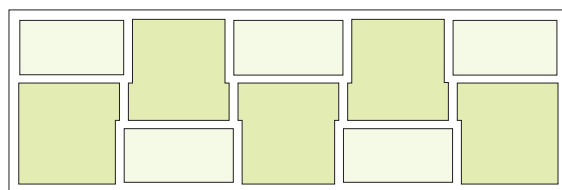
116,55m²



APPARTEMENTS 2^{ÈME} ÉTAGE

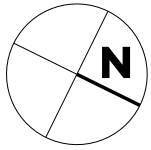
| Type | Surface Utile | surface terrasse | surface cave | prix de vente subventionné TVA 3% * |
|------------|---------------------|---------------------|--------------------|-------------------------------------|
| 109 | 90,15m ² | 13,65m ² | 6,40m ² | 312.770 € |

- les surfaces inscrites dans ce tableau peuvent subir de légères modifications dues aux nécessités techniques de la construction.
- surface utile = surface calculée à l'intérieur des murs extérieurs.
- * primes ACE sont déjà déduites (uniquement pour les acquéreurs bénéficiant d'une prime de construction de l'Etat.)



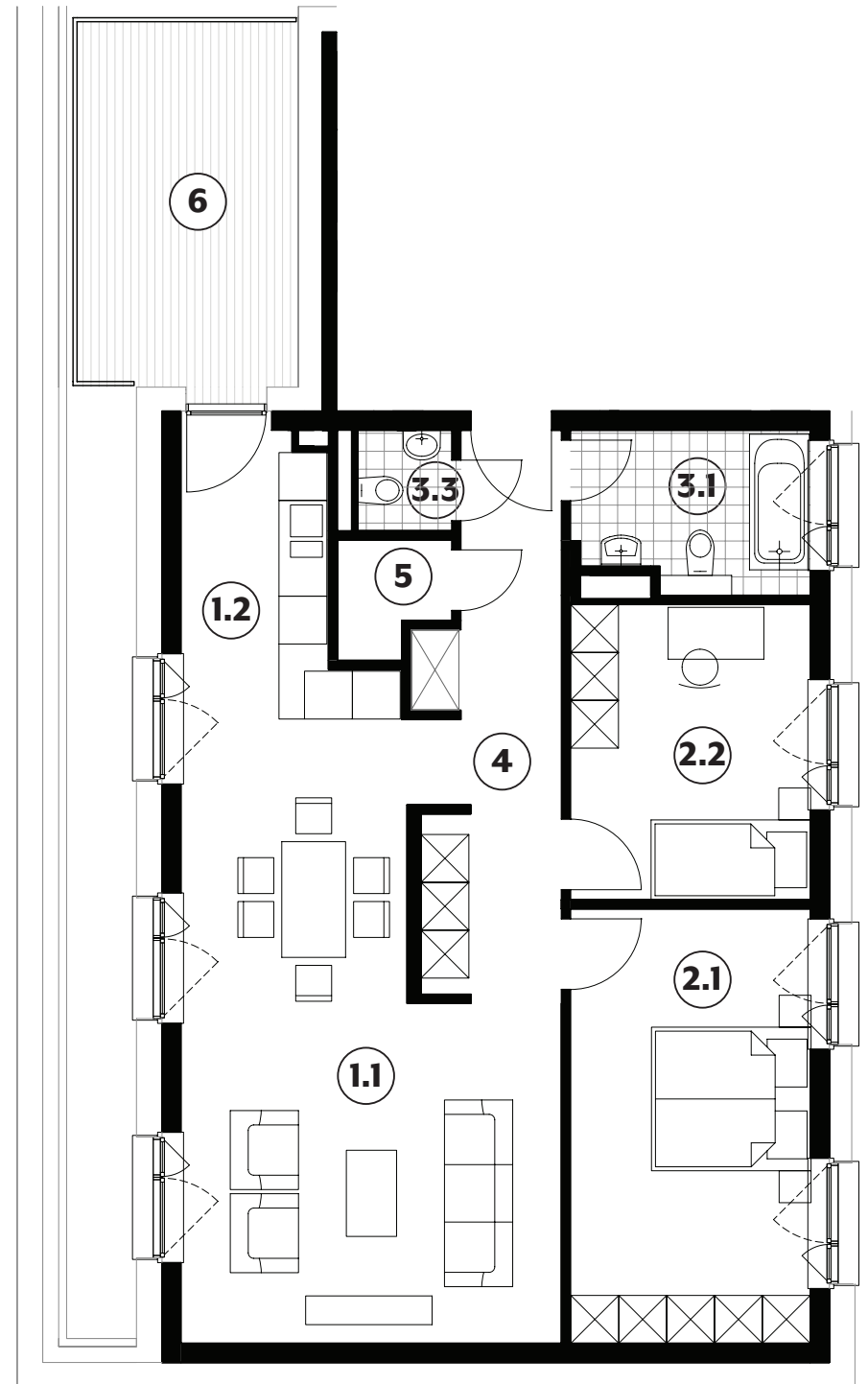
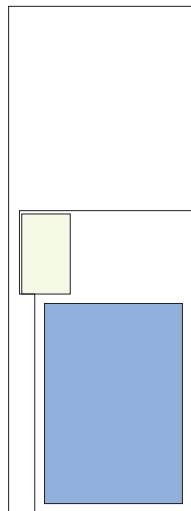
APPARTEMENT TYPE

109



| | | |
|------------|----------------|---------------------|
| 1.1 | séjour | 30,40m ² |
| 1.2 | cuisine | 7,15m ² |
| 2.1 | chambre | 16,40m ² |
| 2.2 | chambre | 11,15m ² |
| 3.1 | salle de bains | 5,80m ² |
| 3.3 | w.c. | 1,50m ² |
| 4 | couloir | 11,50m ² |
| 5 | débarras | 1,85m ² |
| 6 | terrasse | 13,65m ² |

90,15m²



IMPLANTATION







Société Nationale des
Habitations à Bon Marché

2b, rue Kalchesbruck
L-1852 Luxembourg

Cindy Arendt
Tél. (+352) 448292 - 555
cindy.arendt@snhbm.lu

snhbm.lu