

# Résidence TRI

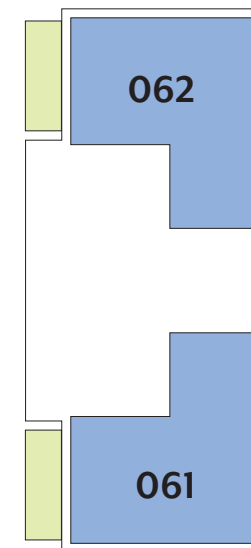
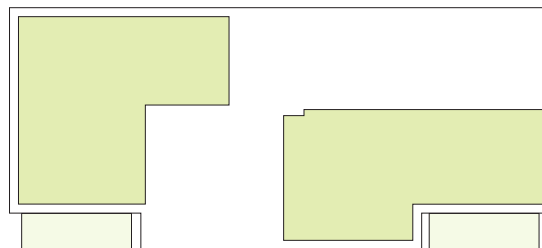
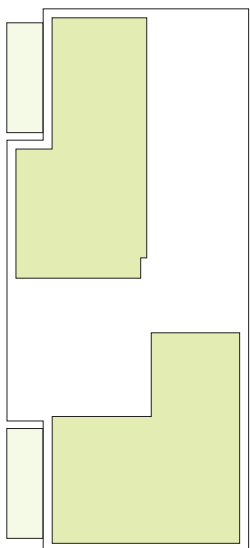


## APPARTEMENTS

# REZ-DE-CHAUSSÉE

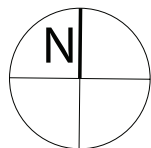
Type	Surface Utile	surface terrasse	surface cave	prix de vente subventionné TVA 3% *
<b>061</b>	93,35m <sup>2</sup>	12,20m <sup>2</sup>	9,37m <sup>2</sup>	<b>297.029 €</b>
<b>062</b>	93,35m <sup>2</sup>	12,20m <sup>2</sup>	9,37m <sup>2</sup>	<b>286.729 €</b>

- les surfaces inscrites dans ce tableau peuvent subir de légères modifications dues aux nécessités techniques de la construction.
- surface utile = surface calculée à l'intérieur des murs extérieurs.
- \* primes ACE sont déjà déduites (uniquement pour les acquéreurs bénéficiant d'une prime de construction de l'Etat.)



# APPARTEMENT TYPE

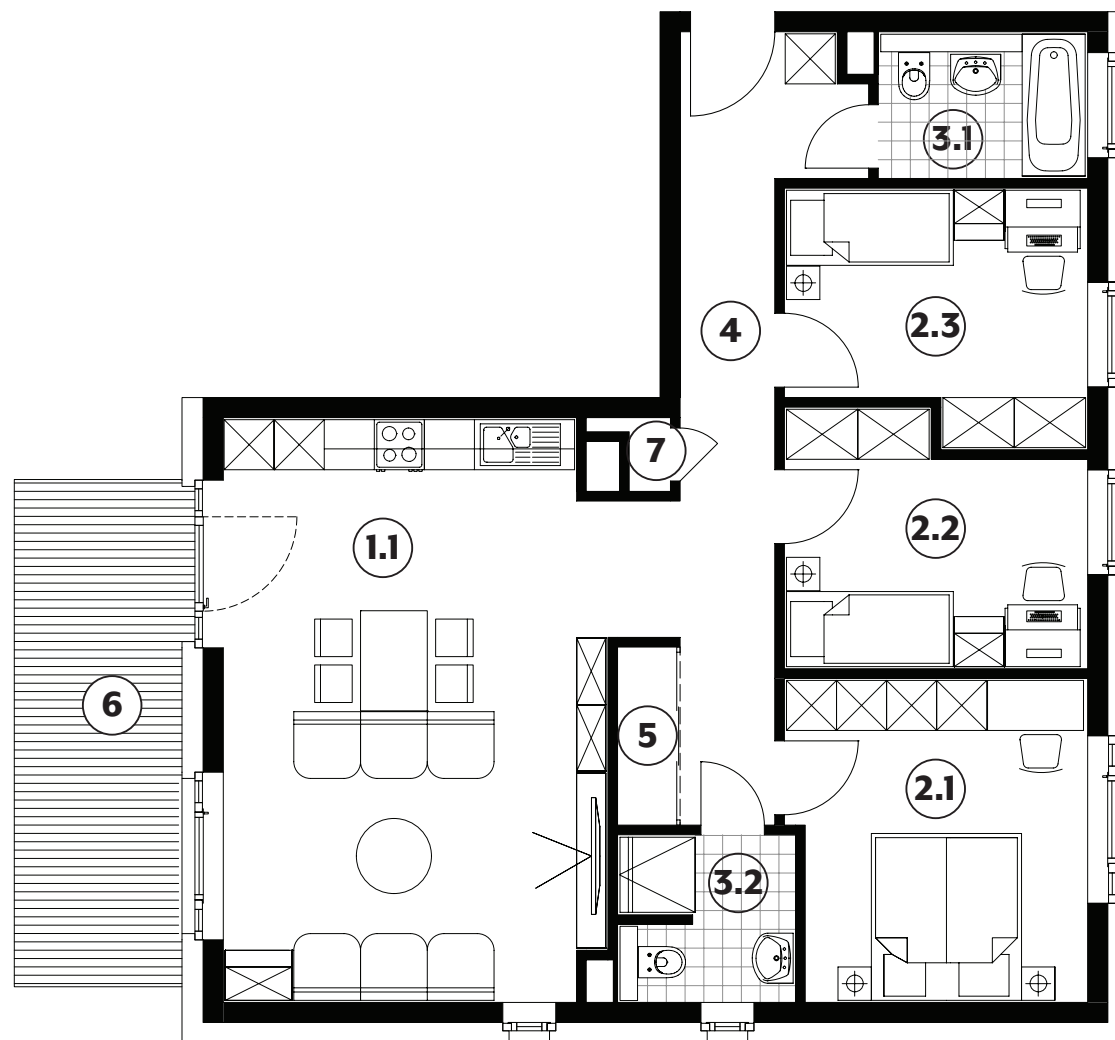
# 061



<b>1.1</b>	séjour/cuisine	<b>33,10m<sup>2</sup></b>
<b>2.1</b>	chambre	<b>13,60m<sup>2</sup></b>
<b>2.2</b>	chambre	<b>10,20m<sup>2</sup></b>
<b>2.3</b>	chambre	<b>10,20m<sup>2</sup></b>
<b>3.1</b>	salle de bains	<b>4,40m<sup>2</sup></b>
<b>3.2</b>	salle de douche	<b>4,20m<sup>2</sup></b>
<b>4</b>	couloir	<b>12,55m<sup>2</sup></b>
<b>5</b>	débarras	<b>1,50m<sup>2</sup></b>
<b>6</b>	terrasse	<b>12,20m<sup>2</sup></b>
<b>7</b>	tech.	

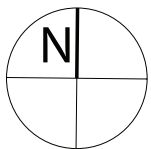
surface habitable

**89,75m<sup>2</sup>**



# APPARTEMENT TYPE

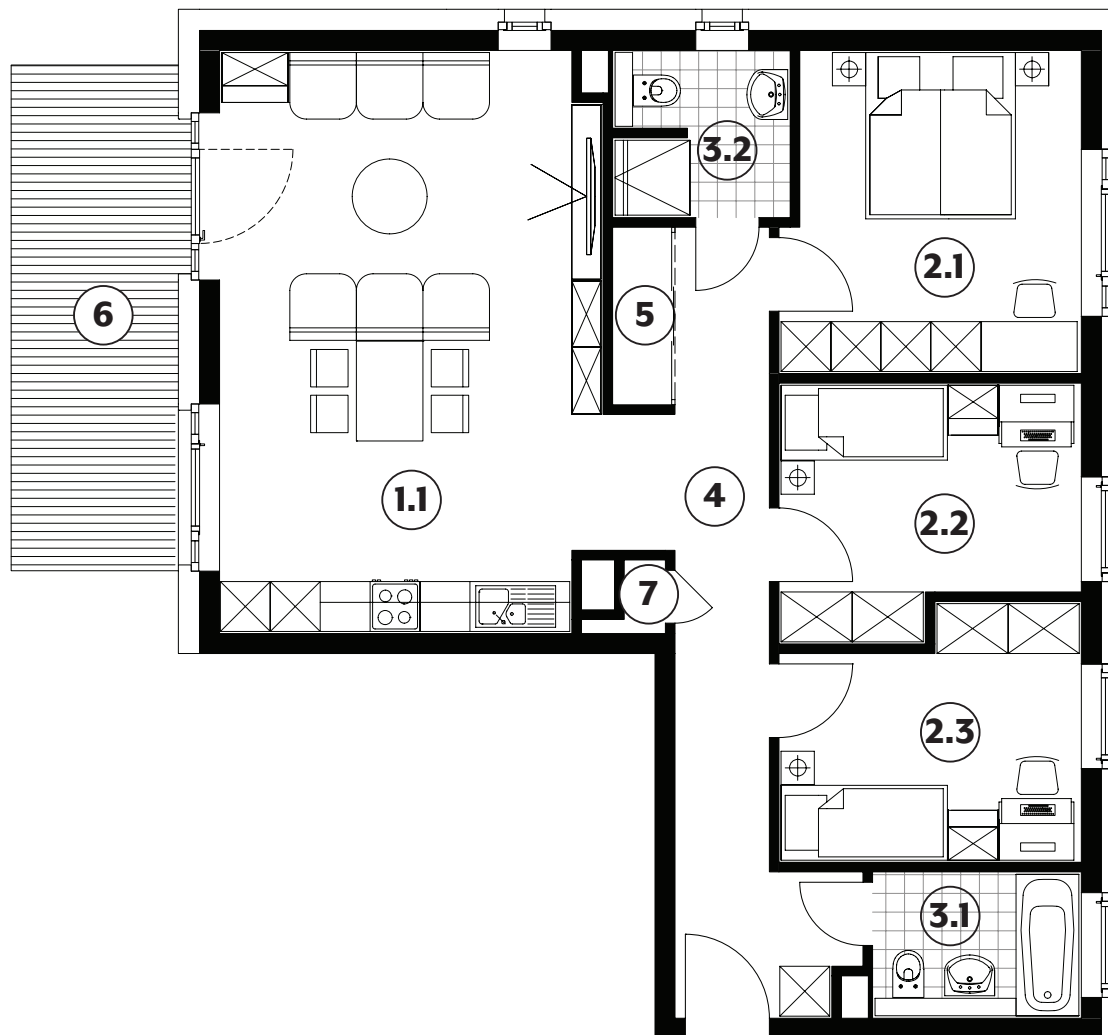
# 062



<b>1.1</b>	séjour/cuisine	<b>33,10m<sup>2</sup></b>
<b>2.1</b>	chambre	<b>13,60m<sup>2</sup></b>
<b>2.2</b>	chambre	<b>10,20m<sup>2</sup></b>
<b>2.3</b>	chambre	<b>10,20m<sup>2</sup></b>
<b>3.1</b>	salle de bains	<b>4,40m<sup>2</sup></b>
<b>3.2</b>	salle de douche	<b>4,20m<sup>2</sup></b>
<b>4</b>	couloir	<b>12,55m<sup>2</sup></b>
<b>5</b>	débarras	<b>1,50m<sup>2</sup></b>
<b>6</b>	terrasse	<b>12,20m<sup>2</sup></b>
<b>7</b>	tech.	

surface habitable

**89,75m<sup>2</sup>**

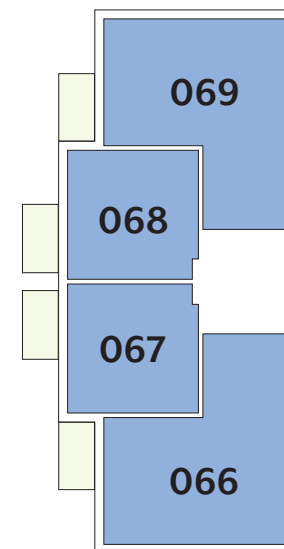
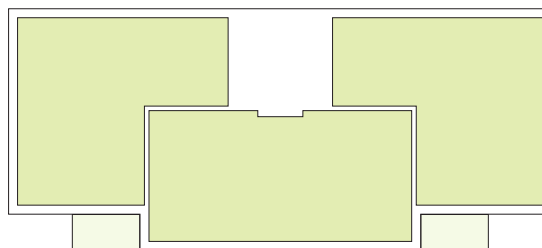
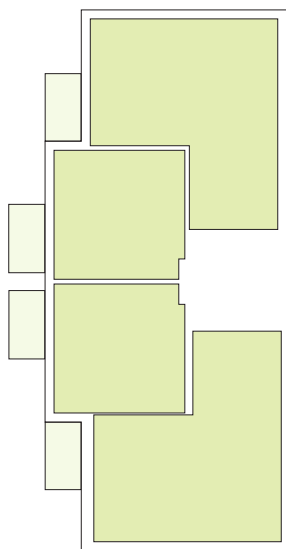


## APPARTEMENTS

# 1<sup>ER</sup> ÉTAGE

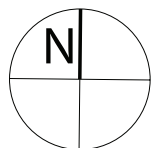
- les surfaces inscrites dans ce tableau peuvent subir de légères modifications dues aux nécessités techniques de la construction.
- surface utile = surface calculée à l'intérieur des murs extérieurs.
- \* primes ACE sont déjà déduites (uniquement pour les acquéreurs bénéficiant d'une prime de construction de l'Etat.)

Type	Surface Utile	surface balcon	surface cave	prix de vente subventionné TVA 3% *
<b>066</b>	93,35m <sup>2</sup>	7,05m <sup>2</sup>	9,40m <sup>2</sup>	<b>310.460 €</b>
<b>067</b>	100,45m <sup>2</sup>	7,05m <sup>2</sup>	10,10m <sup>2</sup>	<b>304.503 €</b>
<b>068</b>	100,45m <sup>2</sup>	7,05m <sup>2</sup>	10,38m <sup>2</sup>	<b>304.503 €</b>
<b>069</b>	93,35m <sup>2</sup>	7,05m <sup>2</sup>	9.60m <sup>2</sup>	<b>300.160€</b>



# APPARTEMENT TYPE

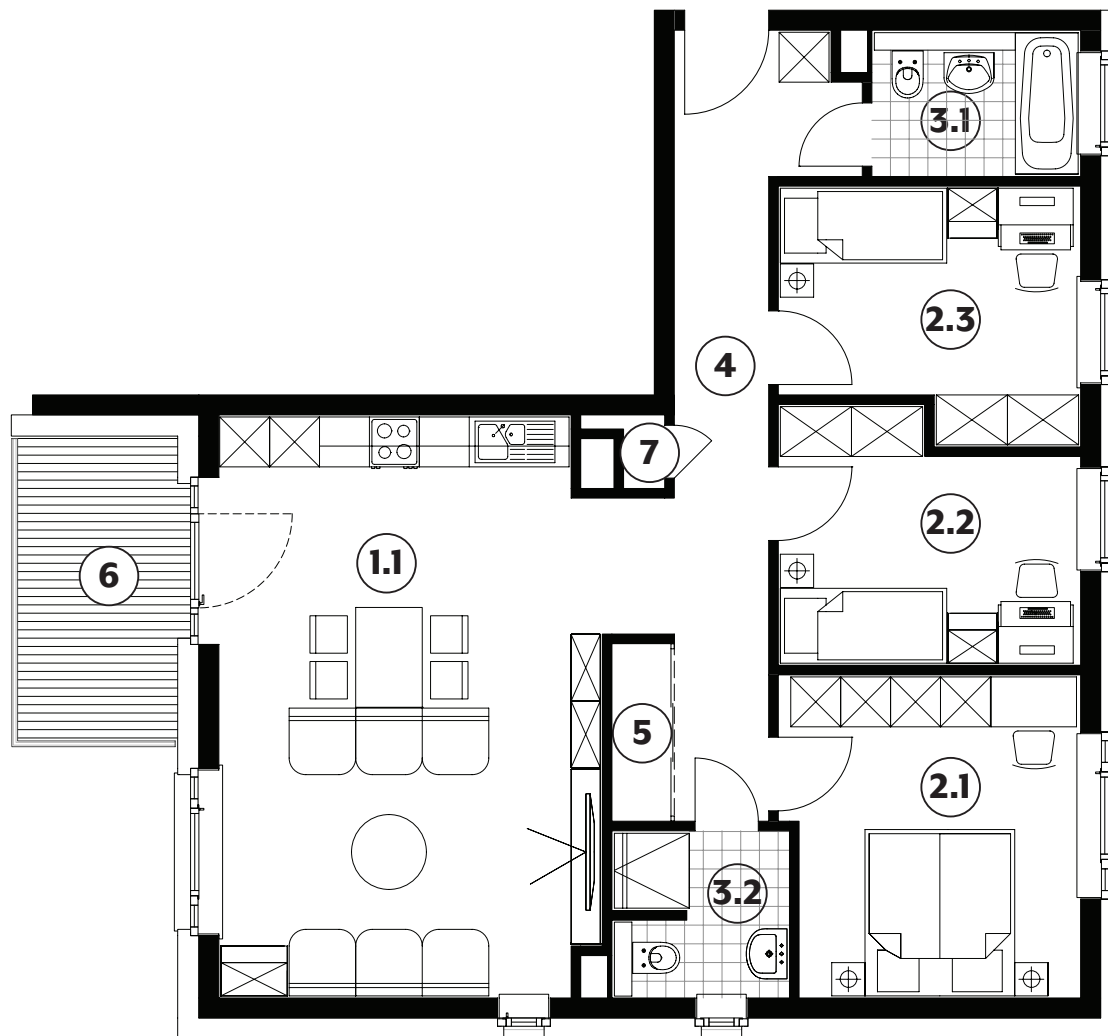
# 066



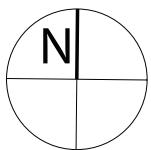
<b>1.1</b>	séjour/cuisine	<b>33,10m<sup>2</sup></b>
<b>2.1</b>	chambre	<b>13,60m<sup>2</sup></b>
<b>2.2</b>	chambre	<b>10,20m<sup>2</sup></b>
<b>2.3</b>	chambre	<b>10,20m<sup>2</sup></b>
<b>3.1</b>	salle de bains	<b>4,40m<sup>2</sup></b>
<b>3.2</b>	salle de douche	<b>4,20m<sup>2</sup></b>
<b>4</b>	couloir	<b>12,55m<sup>2</sup></b>
<b>5</b>	débarras	<b>1,50m<sup>2</sup></b>
<b>6</b>	balcon	<b>7,05m<sup>2</sup></b>
<b>7</b>	techn.	

surface habitable

**89,75m<sup>2</sup>**

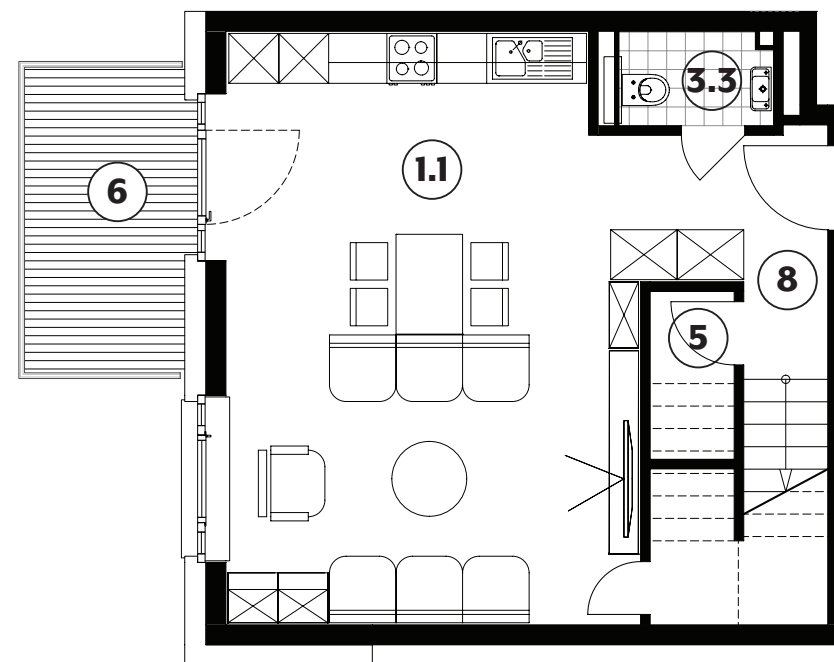
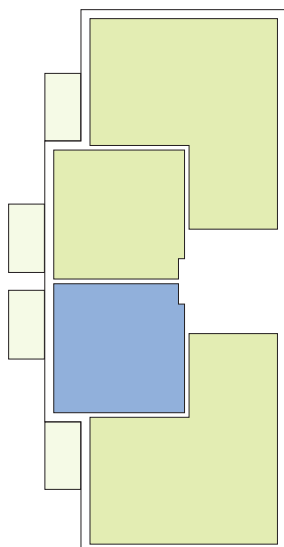


# APPARTEMENT TYPE 067



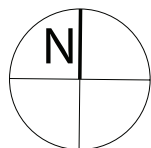
<b>1.1</b>	séjour/cuisine	<b>34,80m<sup>2</sup></b>
<b>3.3</b>	wc	<b>2,05m<sup>2</sup></b>
<b>5</b>	débarras	<b>2,05m<sup>2</sup></b>
<b>6</b>	balcon	<b>7,05m<sup>2</sup></b>
<b>8</b>	hall	<b>5,20m<sup>2</sup></b>

surface habitable  
**86,05m<sup>2</sup>**



# APPARTEMENT TYPE

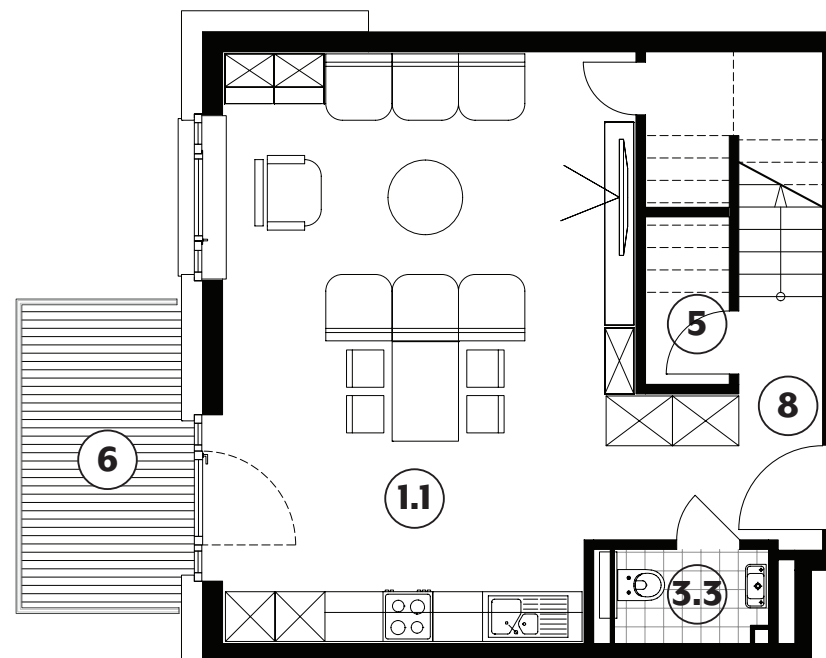
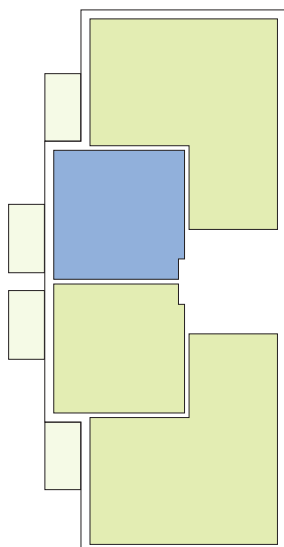
# 068



<b>1.1</b>	séjour/cuisine	<b>34,80m<sup>2</sup></b>
<b>3.3</b>	wc	<b>2,05m<sup>2</sup></b>
<b>5</b>	débarras	<b>2,05m<sup>2</sup></b>
<b>6</b>	balcon	<b>7,05m<sup>2</sup></b>
<b>8</b>	hall	<b>5,20m<sup>2</sup></b>

surface habitable

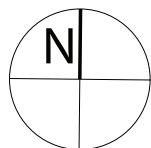
**86,05m<sup>2</sup>**





# APPARTEMENT TYPE

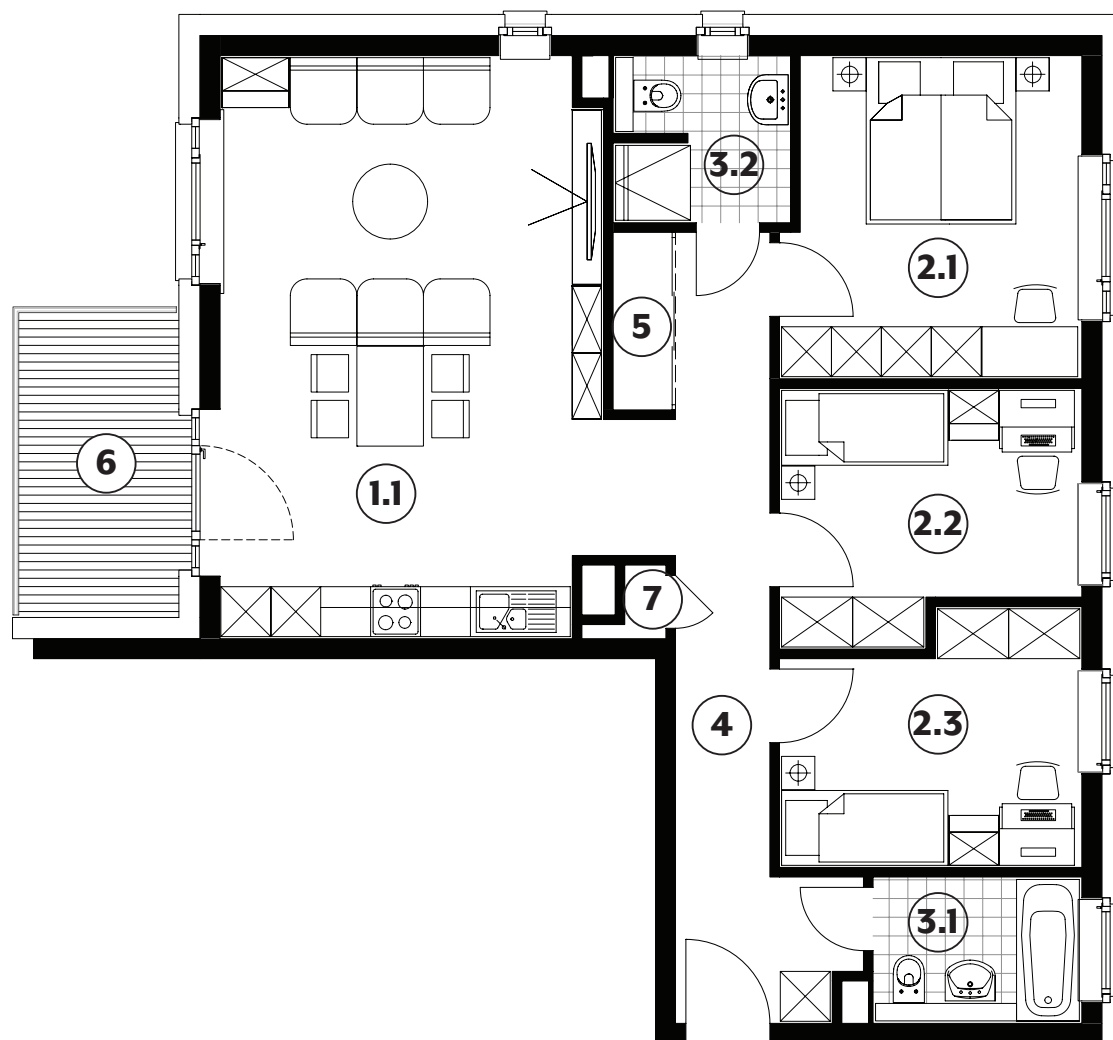
# 069



<b>1.1</b>	séjour/cuisine	<b>33,10m<sup>2</sup></b>
<b>2.1</b>	chambre	<b>13,60m<sup>2</sup></b>
<b>2.2</b>	chambre	<b>10,20m<sup>2</sup></b>
<b>2.3</b>	chambre	<b>10,20m<sup>2</sup></b>
<b>3.1</b>	salle de bains	<b>4,40m<sup>2</sup></b>
<b>3.2</b>	salle de douche	<b>4,20m<sup>2</sup></b>
<b>4</b>	couloir	<b>12,55m<sup>2</sup></b>
<b>5</b>	débarras	<b>1,50m<sup>2</sup></b>
<b>6</b>	balcon	<b>7,05m<sup>2</sup></b>
<b>7</b>	tech.	

surface habitable

**89,75m<sup>2</sup>**

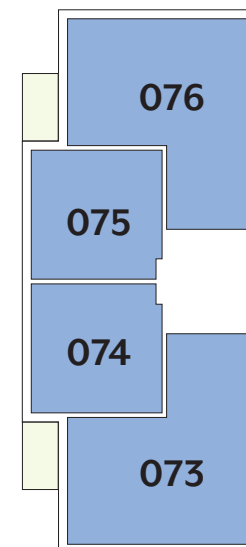
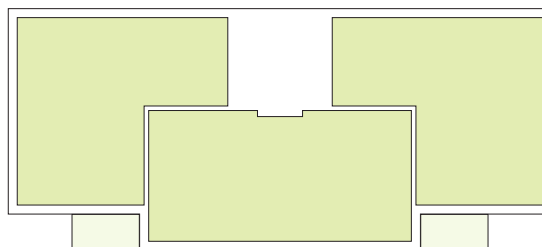
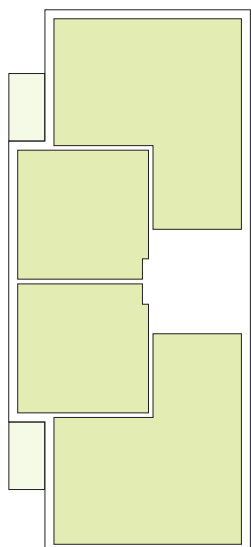


# APPARTEMENTS

## 2<sup>ÈME</sup> ÉTAGE

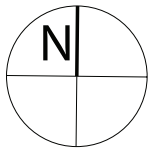
- les surfaces inscrites dans ce tableau peuvent subir de légères modifications dues aux nécessités techniques de la construction.
- surface utile = surface calculée à l'intérieur des murs extérieurs.
- \* primes ACE sont déjà déduites (uniquement pour les acquéreurs bénéficiant d'une prime de construction de l'Etat.)

Type	Surface Utile	surface balcon	surface cave	prix de vente subventionné TVA 3% *
073	93,35m <sup>2</sup>	7,05m <sup>2</sup>	9,82m <sup>2</sup>	<b>320.760 €</b>
074	duplex	-	-	-
075	duplex	-	-	-
076	93,35m <sup>2</sup>	7,05m <sup>2</sup>	10,10m <sup>2</sup>	<b>310.460€</b>



# APPARTEMENT TYPE

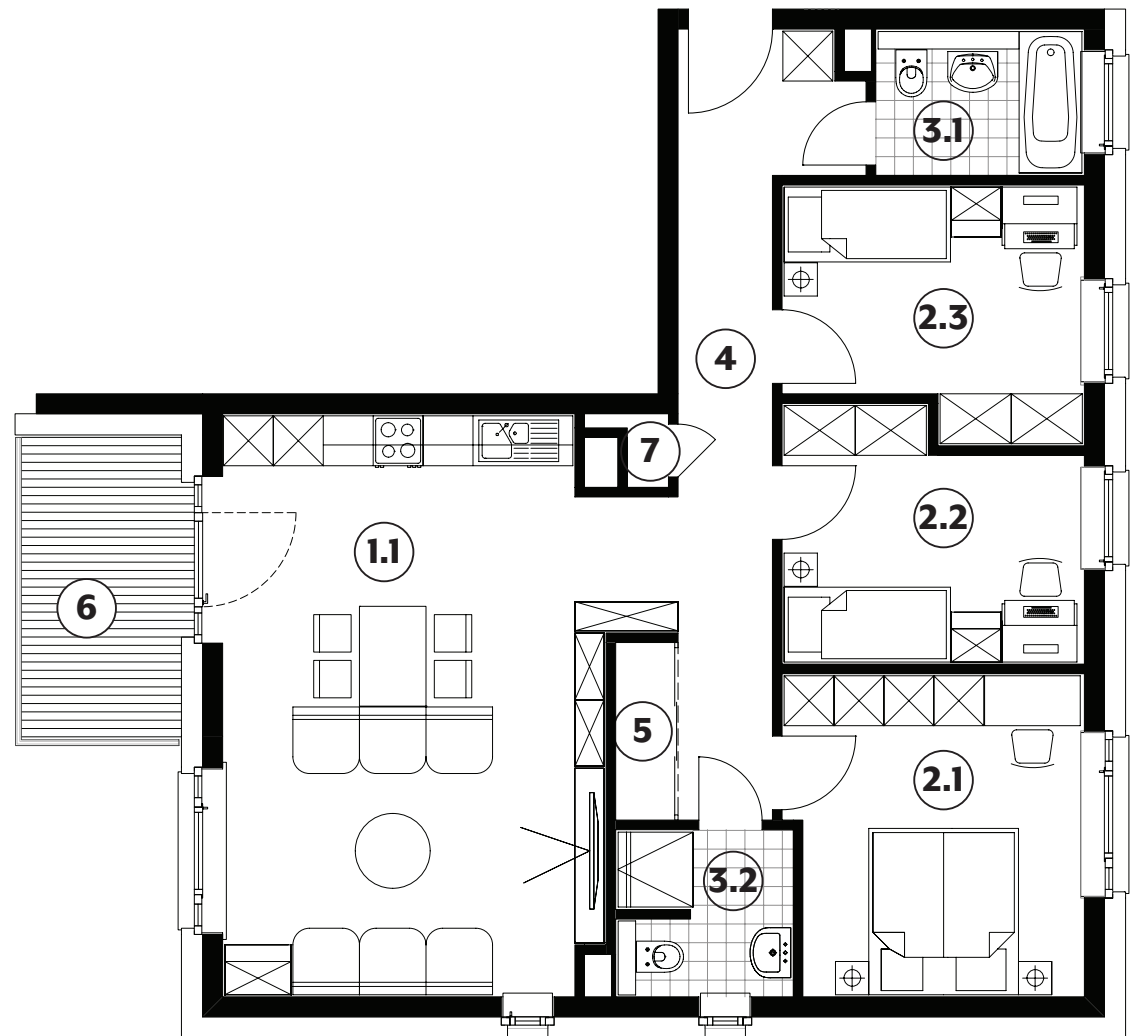
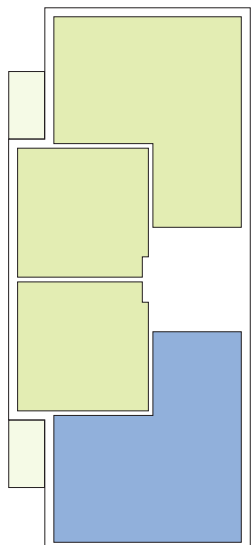
# 073



<b>1.1</b>	séjour	<b>33,10m<sup>2</sup></b>
<b>2.1</b>	chambre	<b>13,60m<sup>2</sup></b>
<b>2.2</b>	chambre	<b>10,20m<sup>2</sup></b>
<b>2.3</b>	chambre	<b>10,20m<sup>2</sup></b>
<b>3.1</b>	salle de bains	<b>4,40m<sup>2</sup></b>
<b>3.2</b>	salle de douche	<b>4,20m<sup>2</sup></b>
<b>4</b>	couloir	<b>12,55m<sup>2</sup></b>
<b>5</b>	débarras	<b>1,50m<sup>2</sup></b>
<b>6</b>	balcon	<b>7,05m<sup>2</sup></b>
<b>7</b>	tech.	

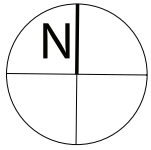
surface habitable

**89,75m<sup>2</sup>**



# APPARTEMENT TYPE

# 074

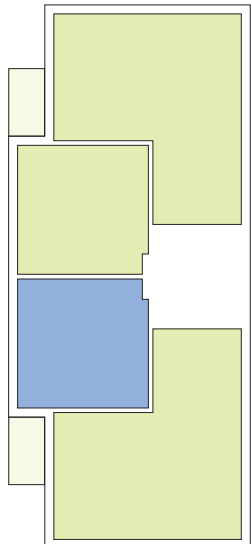
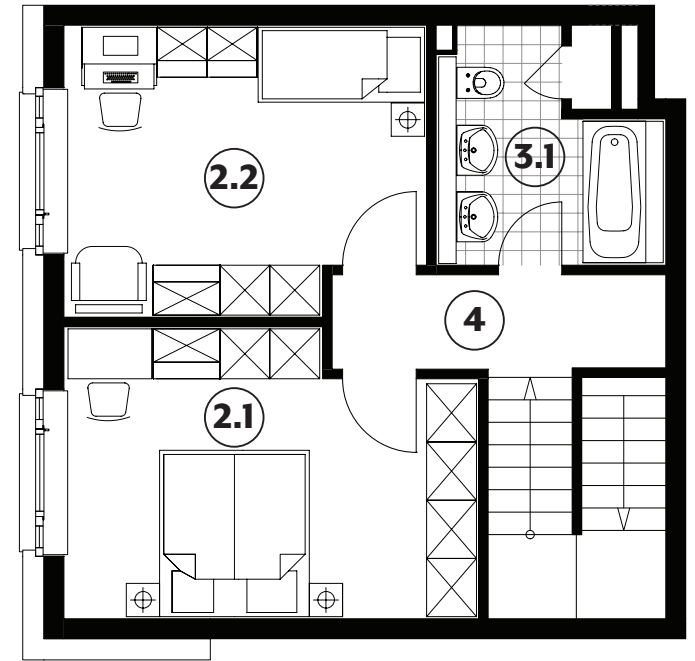


**2.1** chambre 16,35m<sup>2</sup>

**2.2** chambre 14,50m<sup>2</sup>

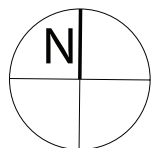
**3.1** salle de bains 6,45m<sup>2</sup>

**4** couloir 4,65m<sup>2</sup>



# APPARTEMENT TYPE

# 075

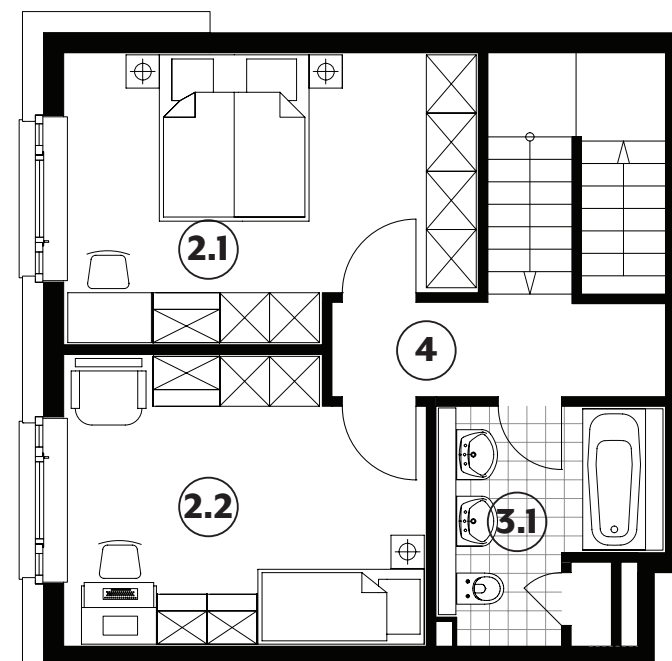
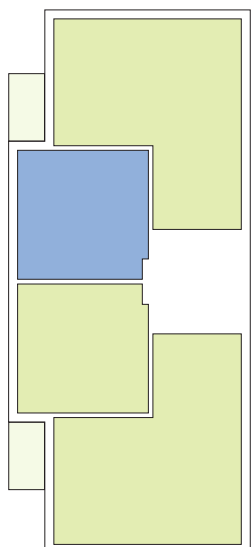


**2.1** chambre 16,35m<sup>2</sup>

**2.2** chambre 14,50m<sup>2</sup>

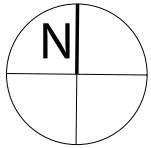
**3.1** salle de bains 6,45m<sup>2</sup>

**4** couloir 4,65m<sup>2</sup>



# APPARTEMENT TYPE

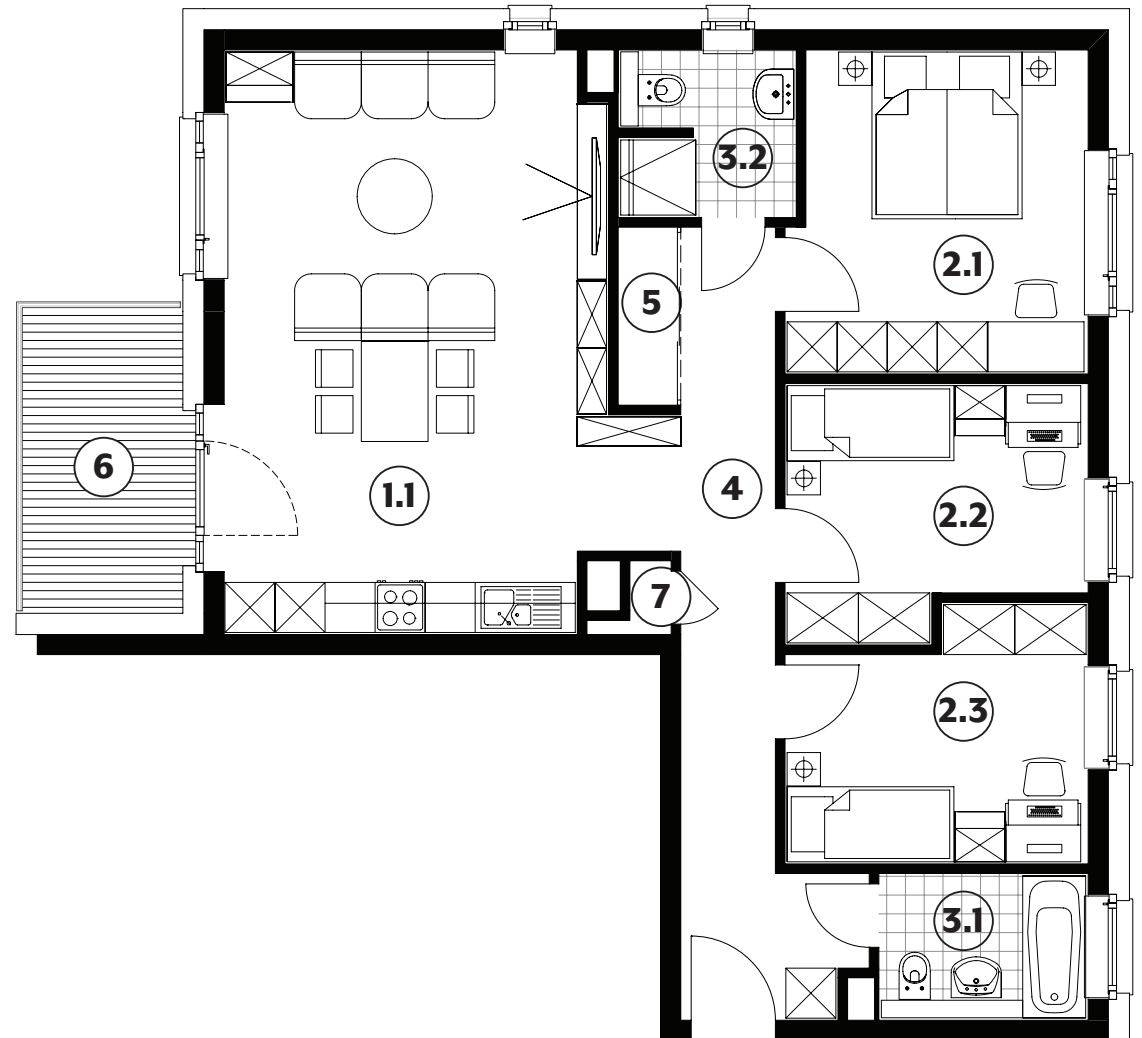
# 076



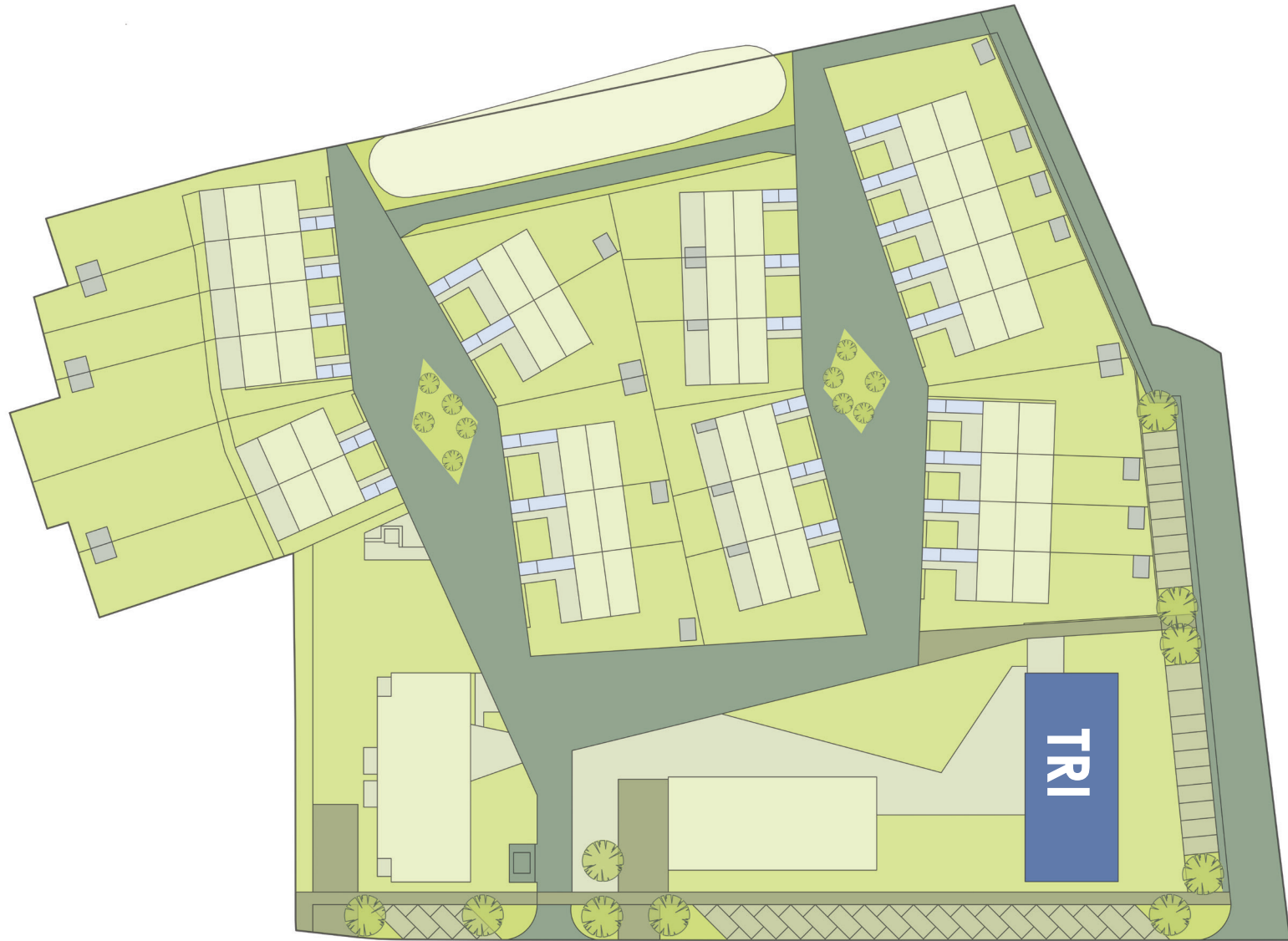
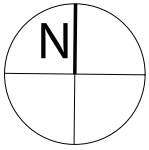
<b>1.1</b>	séjour	<b>33,10m<sup>2</sup></b>
<b>2.1</b>	chambre	<b>13,60m<sup>2</sup></b>
<b>2.2</b>	chambre	<b>10,20m<sup>2</sup></b>
<b>2.3</b>	chambre	<b>10,20m<sup>2</sup></b>
<b>3.1</b>	salle de bains	<b>4,40m<sup>2</sup></b>
<b>3.2</b>	salle de douche	<b>4,20m<sup>2</sup></b>
<b>4</b>	couloir	<b>12,55m<sup>2</sup></b>
<b>5</b>	débarras	<b>1,50m<sup>2</sup></b>
<b>6</b>	balcon	<b>7,05m<sup>2</sup></b>
<b>7</b>	techn.	

surface habitable

**89,75m<sup>2</sup>**



# IMPLANTATION





Société Nationale des  
Habitations à Bon Marché

2b, rue Kalchesbruck  
L-1852 Luxembourg

Cindy Arendt  
Tél. (+352) 448292 - 555  
cindy.arendt@snhbm.lu

Jessica Gaspar  
Tél. (+352) 448292 - 556  
jessica.gaspar@snhbm.lu

[snhbm.lu](http://snhbm.lu)