

Résidence UNU

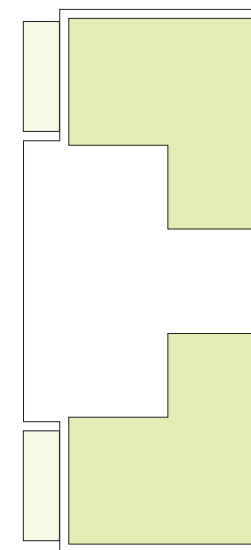
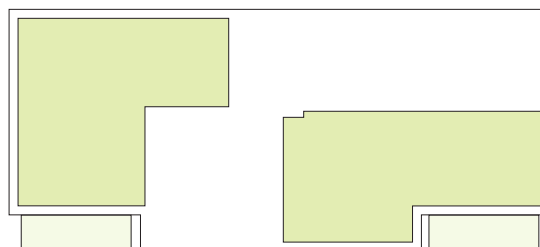
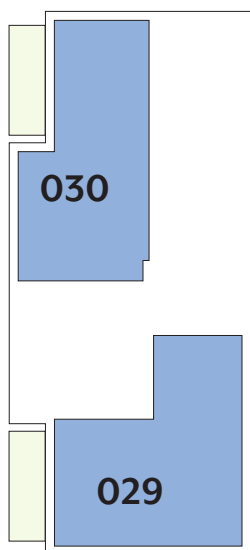


APPARTEMENTS

REZ-DE-CHAUSSÉE

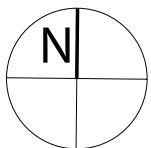
| Type | Surface Utile | surface terrasse | surface cave | prix de vente subventionné TVA 3% * |
|------------|----------------------|---------------------|---------------------|--|
| 029 | 93,35m ² | 12,20m ² | 11,63m ² | 302.179 € |
| 030 | 87,45 m ² | 12,20m ² | 11,65m ² | 269.513 € |

- les surfaces inscrites dans ce tableau peuvent subir de légères modifications dues aux nécessités techniques de la construction.
- surface utile = surface calculée à l'intérieur des murs extérieurs.
- * primes ACE sont déjà déduites (uniquement pour les acquéreurs bénéficiant d'une prime de construction de l'Etat.)



APPARTEMENT TYPE

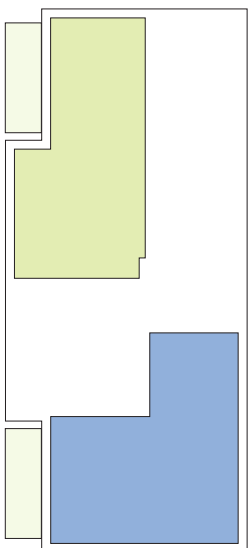
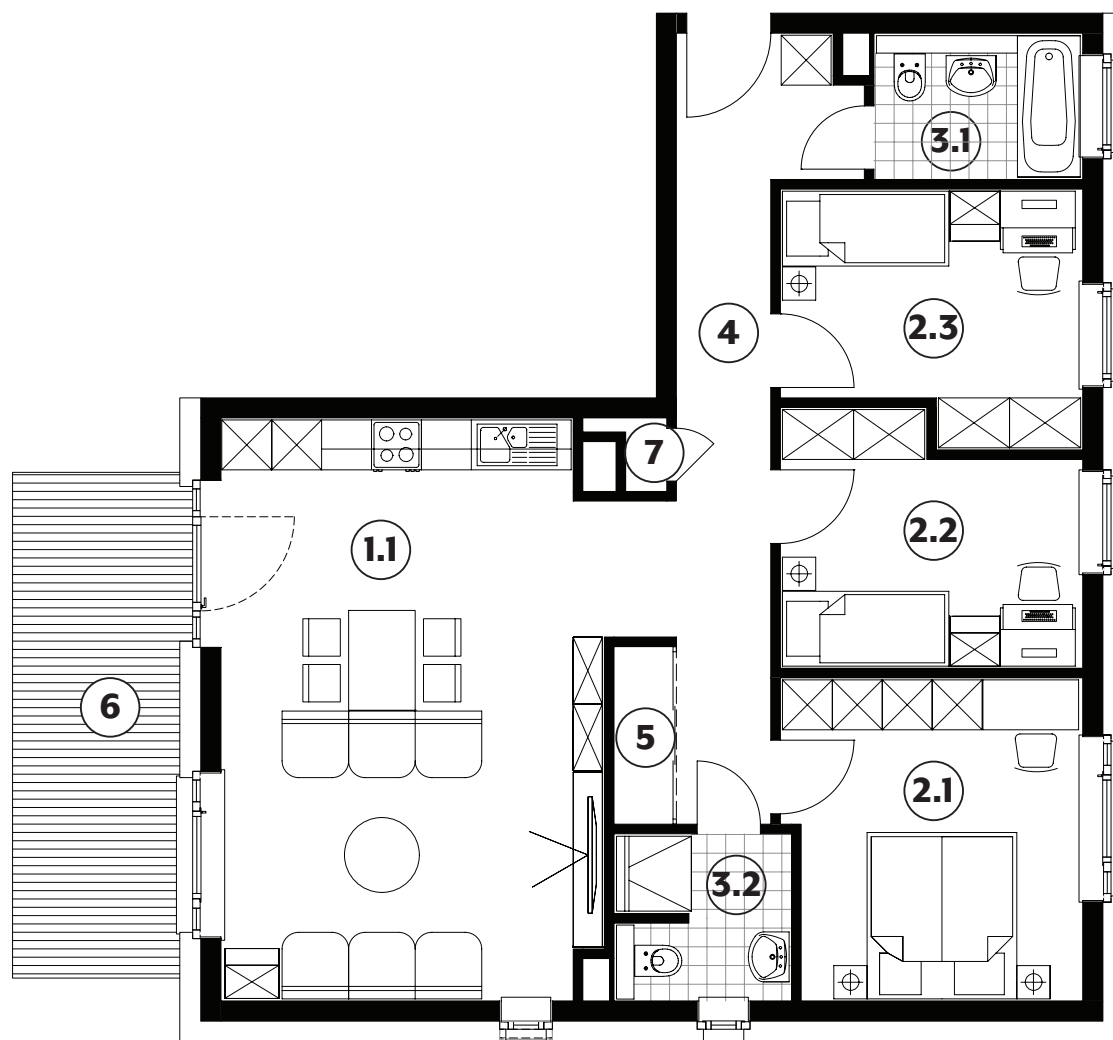
029



| | | |
|------------|-----------------|---------------------------|
| 1.1 | séjour/cuisine | 33,10m² |
| 2.1 | chambre | 13,60m² |
| 2.2 | chambre | 10,20m² |
| 2.3 | chambre | 10,20m² |
| 3.1 | salle de bains | 4,40m² |
| 3.2 | salle de douche | 4,20m² |
| 4 | couloir | 12,55m² |
| 5 | débarras | 1,50m² |
| 6 | terrasse | 12,20m² |
| 7 | tech. | |

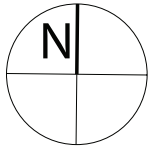
surface habitable

89,75m²



APPARTEMENT TYPE

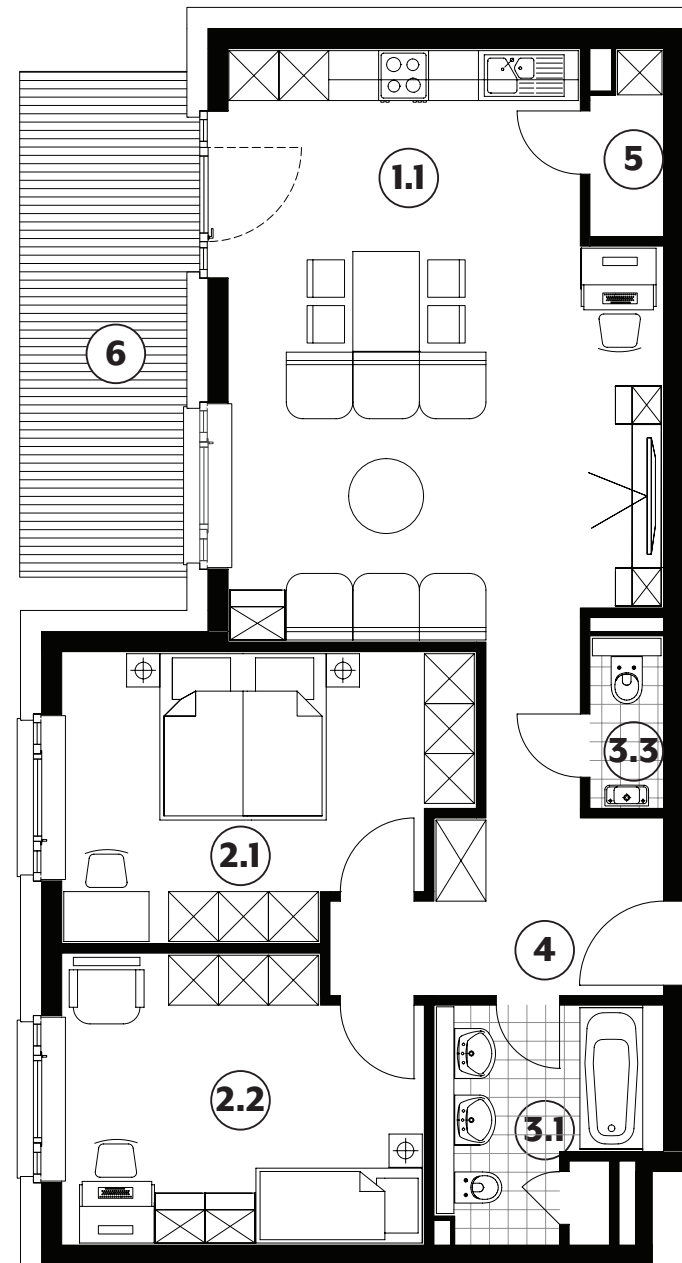
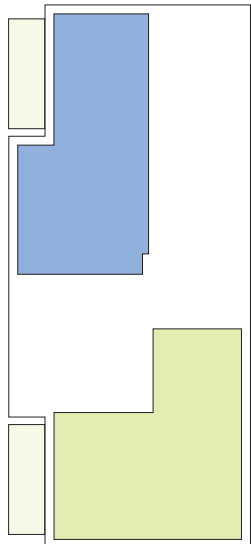
030



| | | |
|------------|----------------|---------------------------|
| 1.1 | séjour/cuisine | 34,55m² |
| 2.1 | chambre | 15,70m² |
| 2.2 | chambre | 14,50m² |
| 3.1 | salle de bains | 6,45m² |
| 3.3 | w.c. | 1,85m² |
| 4 | couloir | 9,70m² |
| 5 | débarras | 1,85m² |
| 6 | terrasse | 12,20m² |

surface habitable

84,60m²

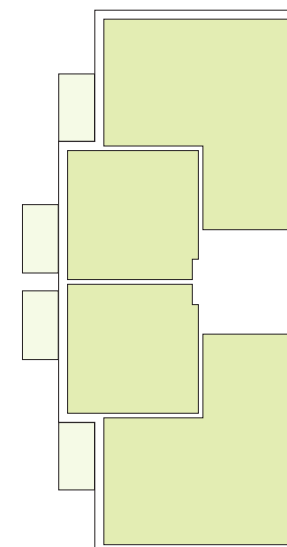
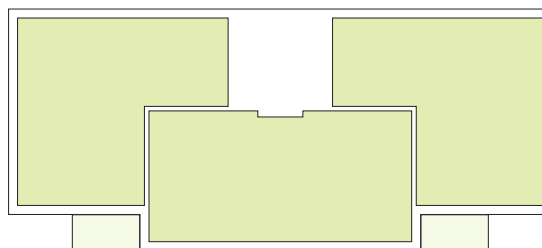
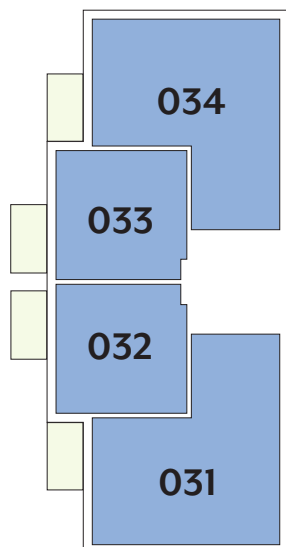


APPARTEMENTS

1^{ER} ÉTAGE

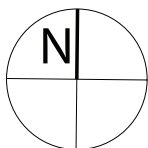
- les surfaces inscrites dans ce tableau peuvent subir de légères modifications dues aux nécessités techniques de la construction.
- surface utile = surface calculée à l'intérieur des murs extérieurs.
- * primes ACE sont déjà déduites (uniquement pour les acquéreurs bénéficiant d'une prime de construction de l'Etat.)

| Type | Surface Utile | surface balcon | surface cave | prix de vente subventionné TVA 3% * |
|------|----------------------|--------------------|---------------------|-------------------------------------|
| 031 | 93,35m ² | 7,05m ² | 12,05m ² | 318.185 € |
| 032 | 100,45m ² | 7,05m ² | 12,30m ² | 314.803 € |
| 033 | 100,45m ² | 7,05m ² | 12,30m ² | 314.803 € |
| 034 | 93,35m ² | 7,05m ² | 12,05m ² | 313.035€ |



APPARTEMENT TYPE

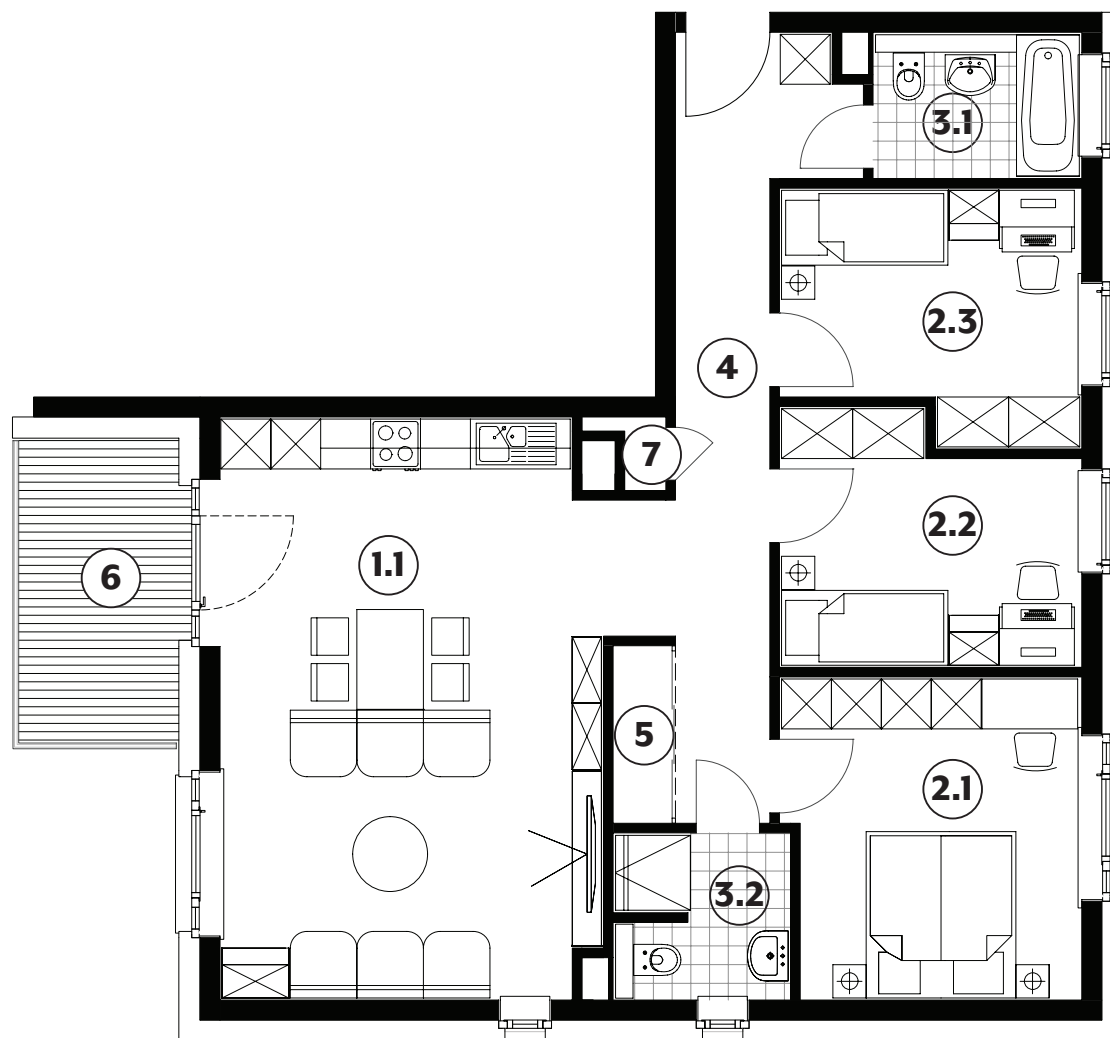
031



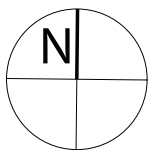
| | | |
|------------|-----------------|---------------------------|
| 1.1 | séjour/cuisine | 33,10m² |
| 2.1 | chambre | 13,60m² |
| 2.2 | chambre | 10,20m² |
| 2.3 | chambre | 10,20m² |
| 3.1 | salle de bains | 4,40m² |
| 3.2 | salle de douche | 4,20m² |
| 4 | couloir | 12,55m² |
| 5 | débarras | 1,50m² |
| 6 | balcon | 7,05m² |
| 7 | techn. | |

surface habitable

89,75m²



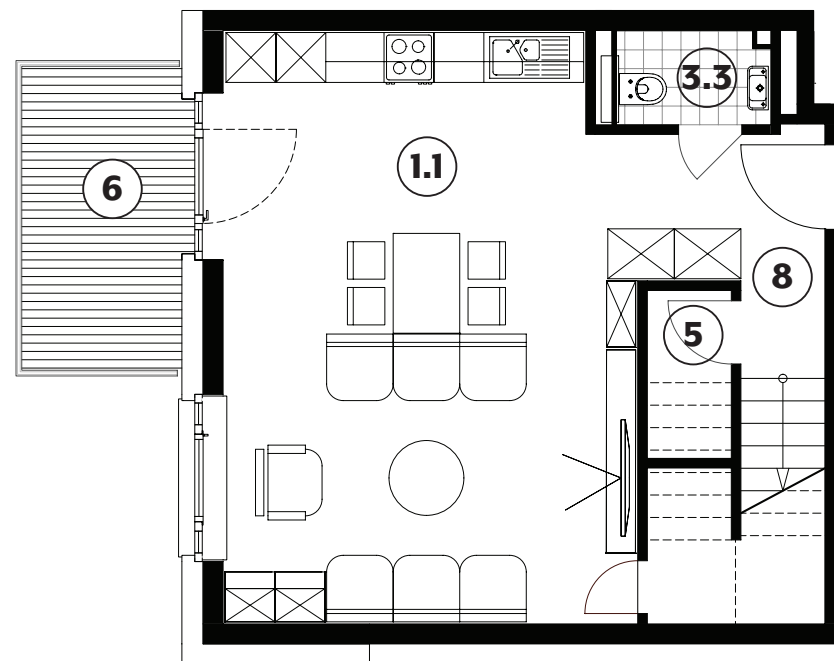
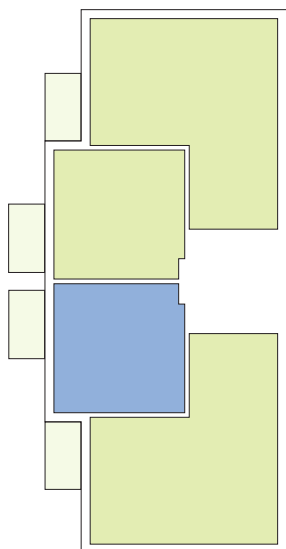
APPARTEMENT TYPE 032



| | | |
|------------|----------------|---------------------------|
| 1.1 | séjour/cuisine | 34,80m² |
| 3.3 | wc | 2,05m² |
| 5 | débarras | 2,05m² |
| 6 | balcon | 7,05m² |
| 8 | hall | 5,20m² |

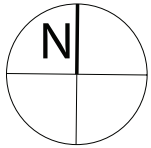
surface habitable

86,05m²



APPARTEMENT TYPE

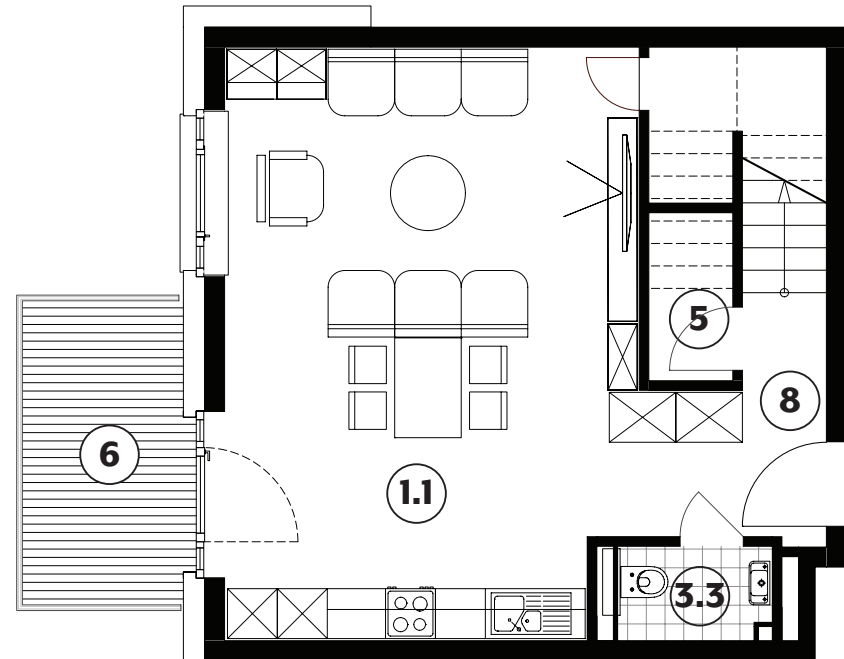
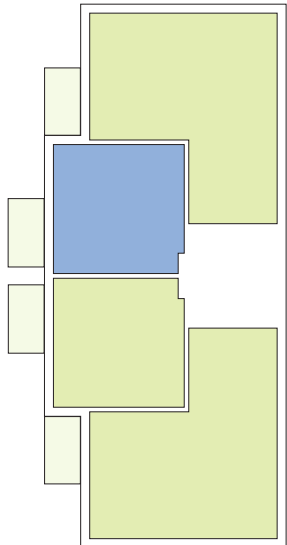
033



| | | |
|------------|----------------|---------------------------|
| 1.1 | séjour/cuisine | 34,80m² |
| 3.3 | wc | 2,05m² |
| 5 | débarras | 2,05m² |
| 6 | balcon | 7,05m² |
| 8 | hall | 5,20m² |

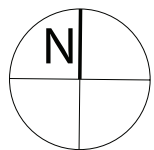
surface habitable

86,05m²



APPARTEMENT TYPE

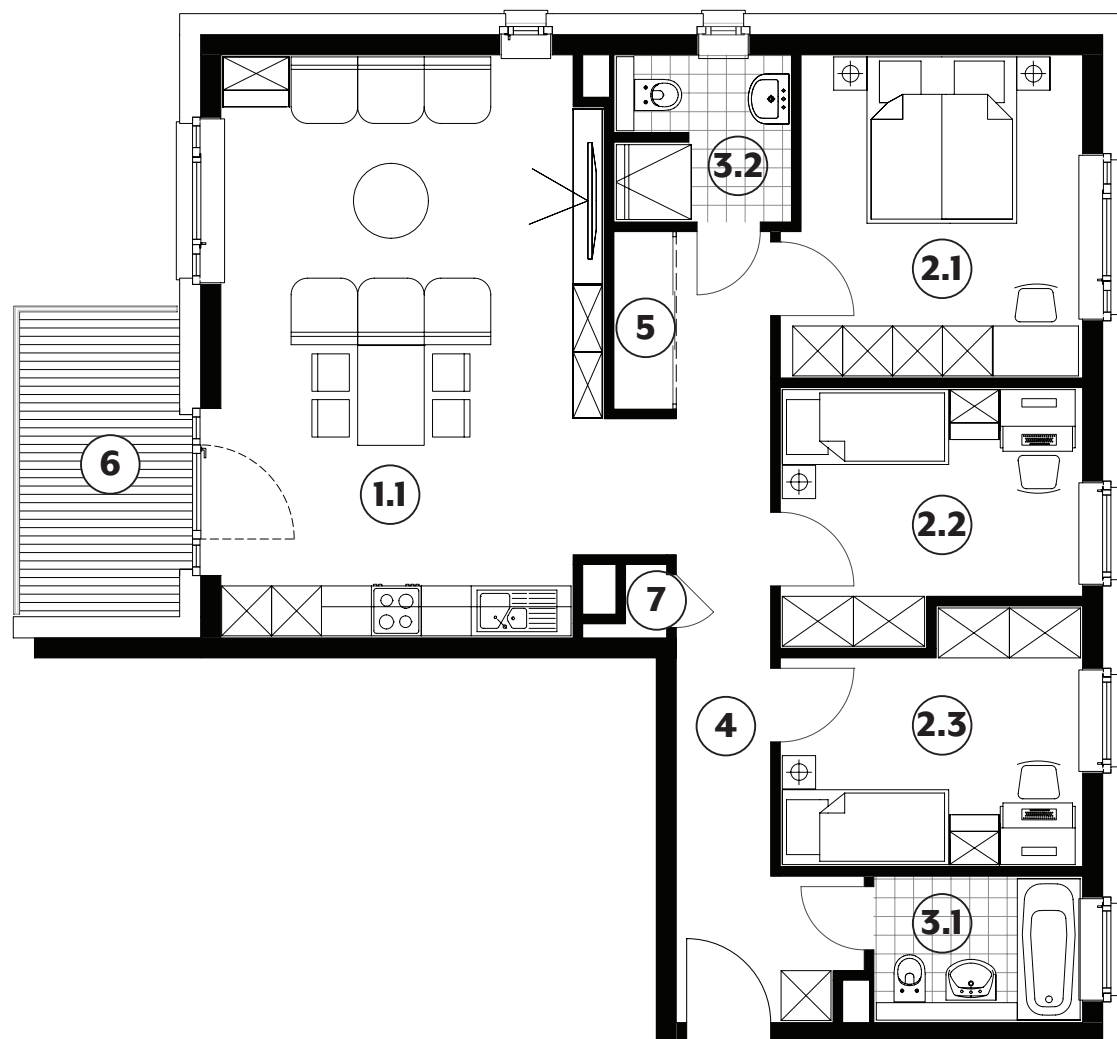
034



| | | |
|------------|-----------------|---------------------------|
| 1.1 | séjour/cuisine | 33,10m² |
| 2.1 | chambre | 13,60m² |
| 2.2 | chambre | 10,20m² |
| 2.3 | chambre | 10,20m² |
| 3.1 | salle de bains | 4,40m² |
| 3.2 | salle de douche | 4,20m² |
| 4 | couloir | 12,55m² |
| 5 | débarras | 1,50m² |
| 6 | balcon | 7,05m² |
| 7 | tech. | |

surface habitable

89,75m²

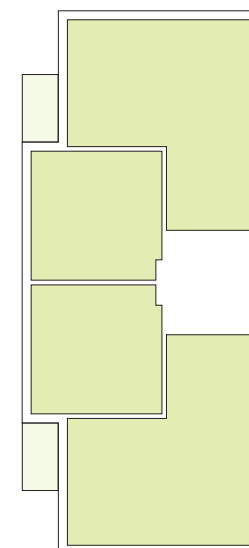
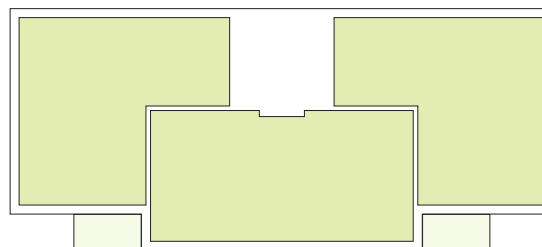
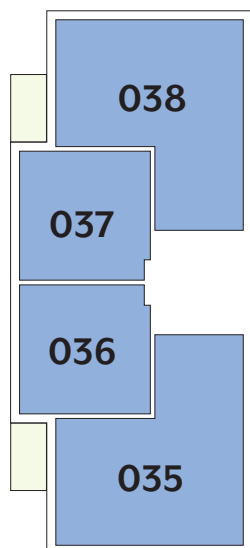


APPARTEMENTS

2^{ÈME} ÉTAGE

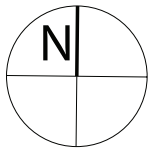
- les surfaces inscrites dans ce tableau peuvent subir de légères modifications dues aux nécessités techniques de la construction.
- surface utile = surface calculée à l'intérieur des murs extérieurs.
- * primes ACE sont déjà déduites (uniquement pour les acquéreurs bénéficiant d'une prime de construction de l'Etat.)

| Type | Surface Utile | surface balcon | surface cave | prix de vente subventionné TVA 3% * |
|------|---------------------|--------------------|---------------------|-------------------------------------|
| 035 | 93,35m ² | 7,05m ² | 12,24m ² | 328.485 € |
| 036 | duplex | - | - | - |
| 037 | duplex | - | - | - |
| 038 | 93,35m ² | 7,05m ² | 12,24m ² | 323.335€ |



APPARTEMENT TYPE

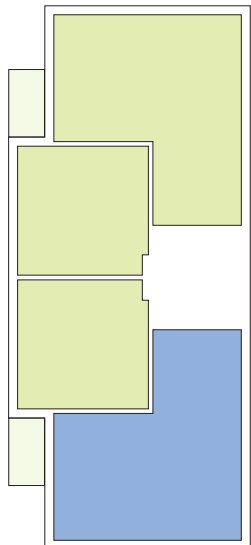
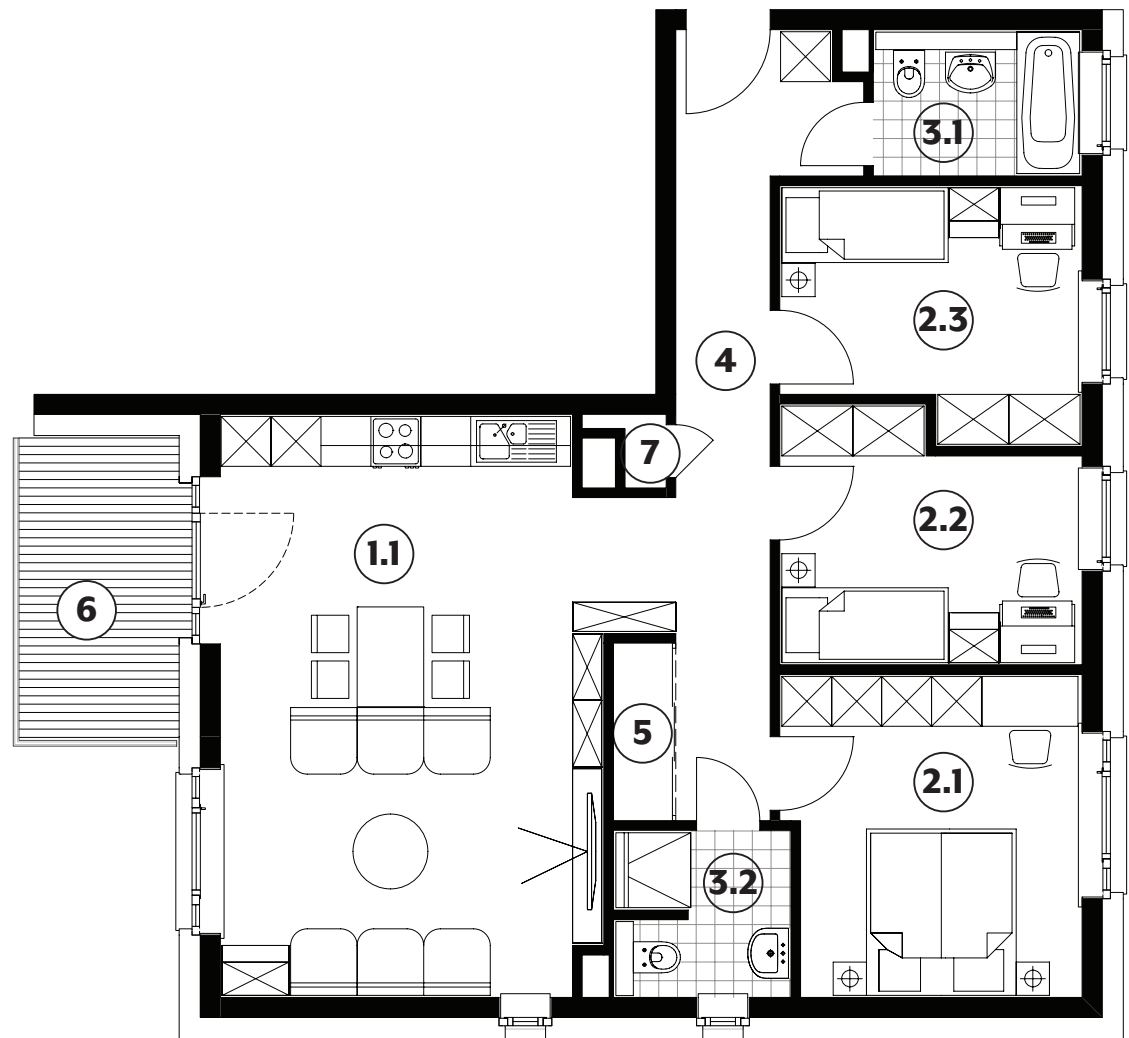
035



| | | |
|------------|-----------------|---------------------------|
| 1.1 | séjour | 33,10m² |
| 2.1 | chambre | 13,60m² |
| 2.2 | chambre | 10,20m² |
| 2.3 | chambre | 10,20m² |
| 3.1 | salle de bains | 4,40m² |
| 3.2 | salle de douche | 4,20m² |
| 4 | couloir | 12,55m² |
| 5 | débarras | 1,50m² |
| 6 | balcon | 7,05m² |
| 7 | tech. | |

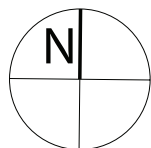
surface habitable

89,75m²



APPARTEMENT TYPE

036

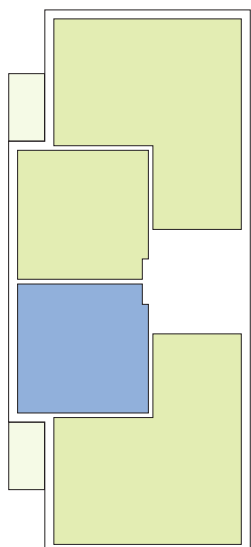
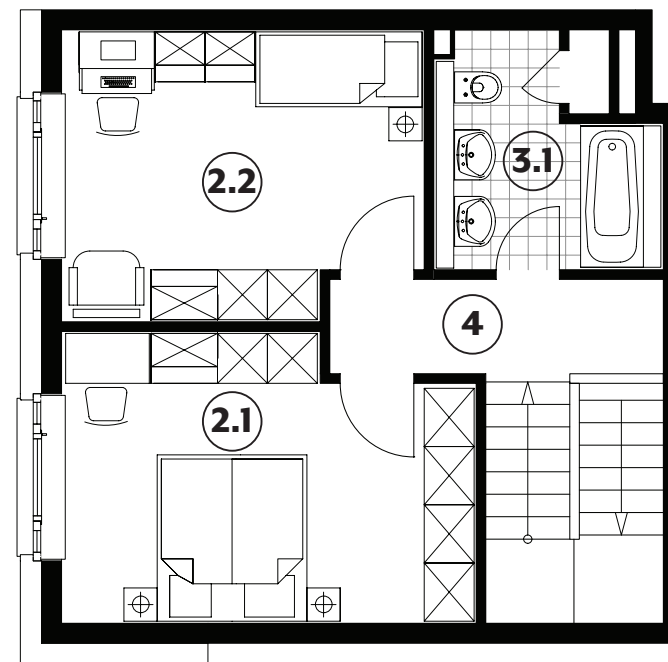


2.1 chambre 16,35m²

2.2 chambre 14,50m²

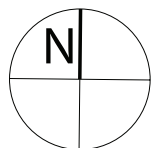
3.1 salle de bains 6,45m²

4 couloir 4,65m²



APPARTEMENT TYPE

037

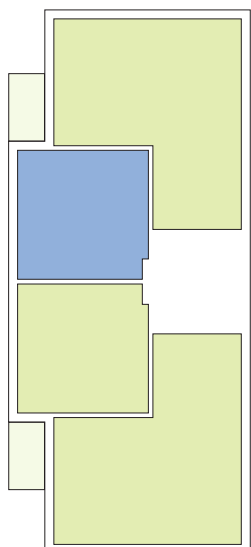
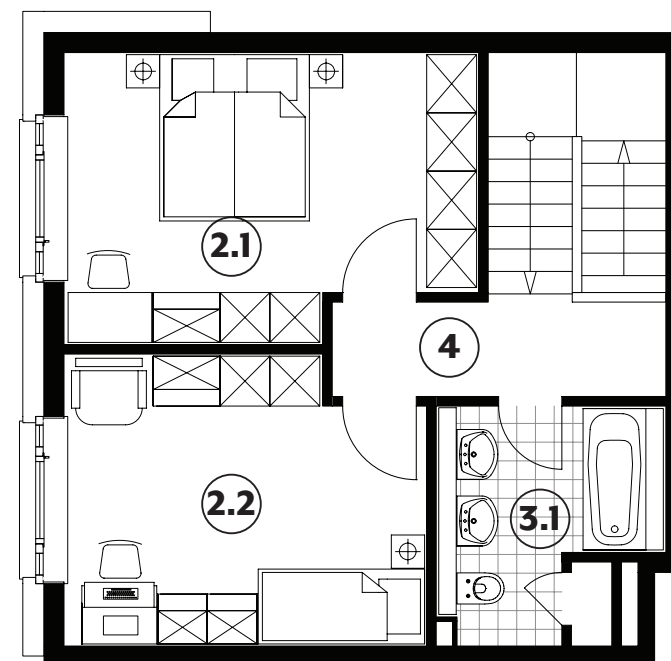


2.1 chambre 16,35m²

2.2 chambre 14,50m²

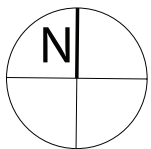
3.1 salle de bains 6,45m²

4 couloir 4,65m²



APPARTEMENT TYPE

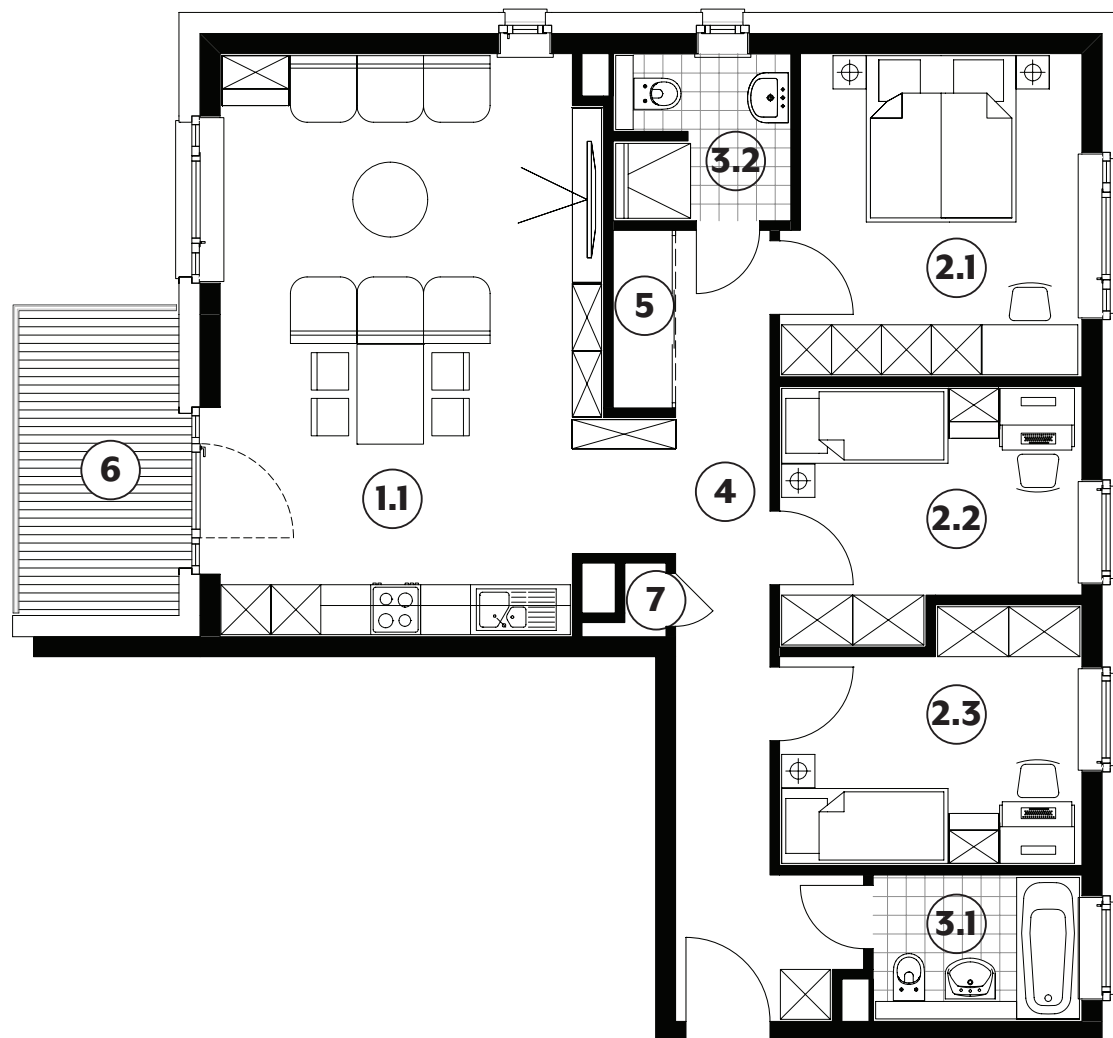
038



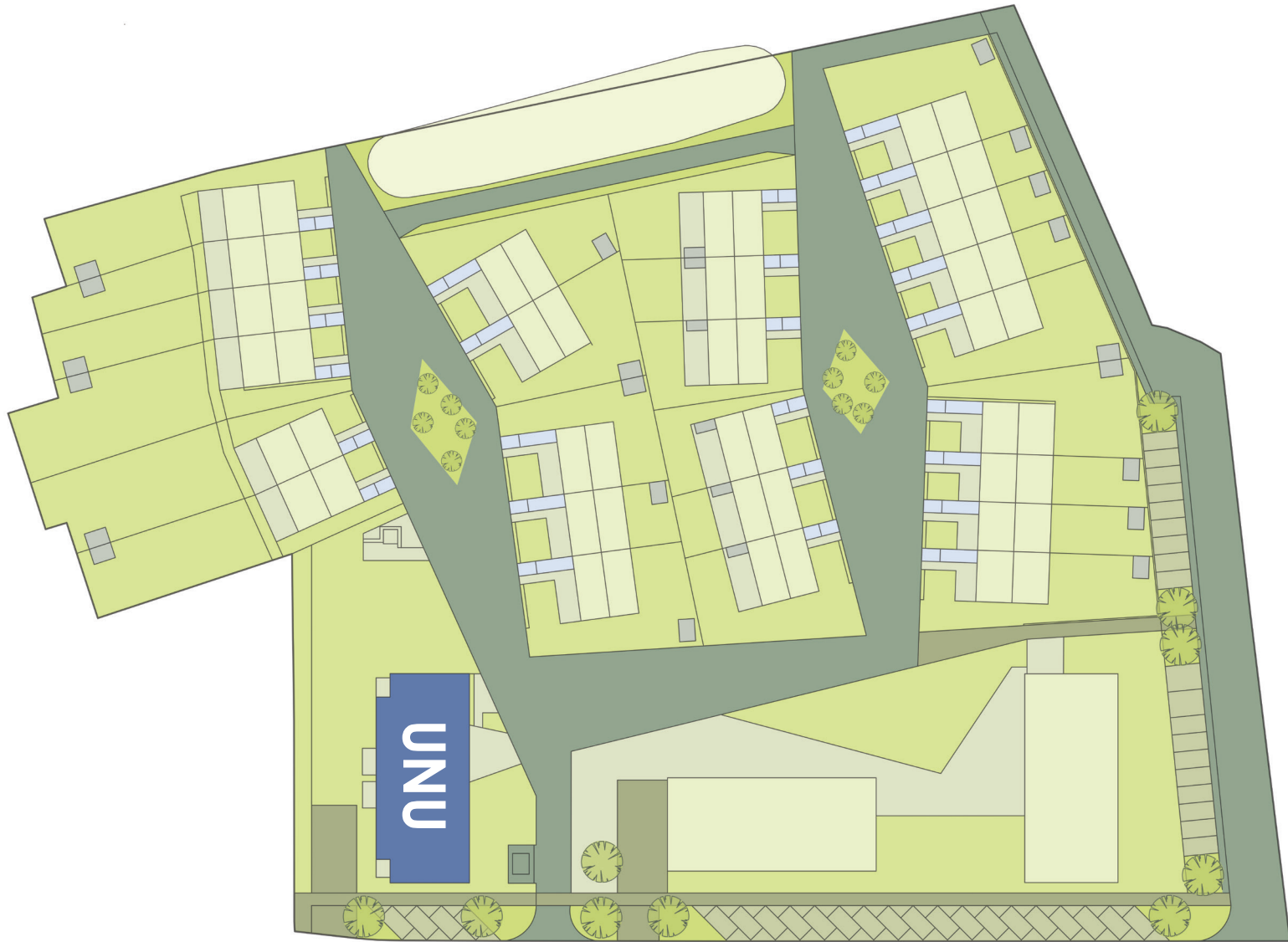
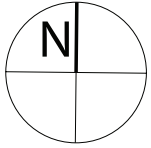
| | | |
|------------|-----------------|---------------------------|
| 1.1 | séjour | 33,10m² |
| 2.1 | chambre | 13,60m² |
| 2.2 | chambre | 10,20m² |
| 2.3 | chambre | 10,20m² |
| 3.1 | salle de bains | 4,40m² |
| 3.2 | salle de douche | 4,20m² |
| 4 | couloir | 12,55m² |
| 5 | débarras | 1,50m² |
| 6 | balcon | 7,05m² |
| 7 | techn. | |

surface habitable

89,75m²



IMPLANTATION





Société Nationale des
Habitations à Bon Marché

2b, rue Kalchesbruck
L-1852 Luxembourg

Cindy Arendt
Tél. (+352) 448292 - 555
cindy.arendt@snhbm.lu

Jessica Gaspar
Tél. (+352) 448292 - 556
jessica.gaspar@snhbm.lu

snhbm.lu