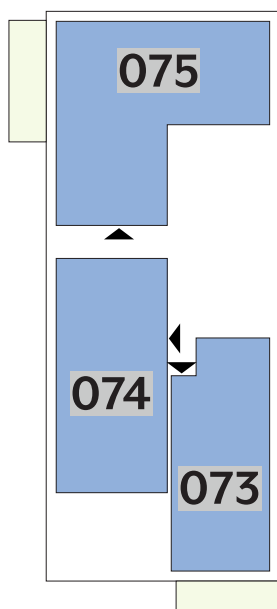
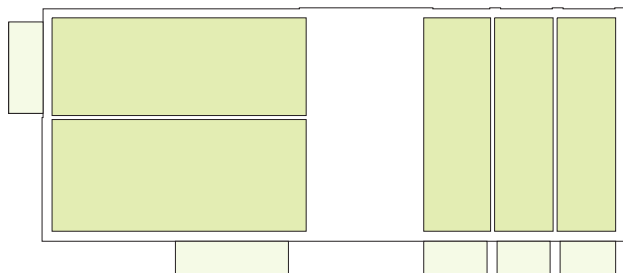


# Résidence ATRIA



## APPARTEMENTS

# REZ-DE-CHAUSSÉE

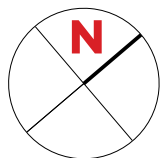


Type	Surface Utile	surface terrasse	prix de vente subventionné TVA 3% *
<b>073</b>	78,72m <sup>2</sup>	10,10m <sup>2</sup>	<b>262.756 €</b>
<b>074</b>	86,92m <sup>2</sup>	5,25m <sup>2</sup>	<b>286.320 €</b>
<b>075</b>	119,20m <sup>2</sup>	16,30m <sup>2</sup>	<b>393.631 €**</b>

- les surfaces inscrites dans ce tableau peuvent subir de légères modifications dues aux nécessités techniques de la construction.
- surface utile = surface calculée à l'intérieur des murs extérieurs.
- \* primes ACE sont déjà déduites (uniquement pour les acquéreurs bénéficiant d'une prime de construction de l'Etat.)
- \*\* primes ACE et remboursement TVA sont déjà déduits.

# APPARTEMENT TYPE

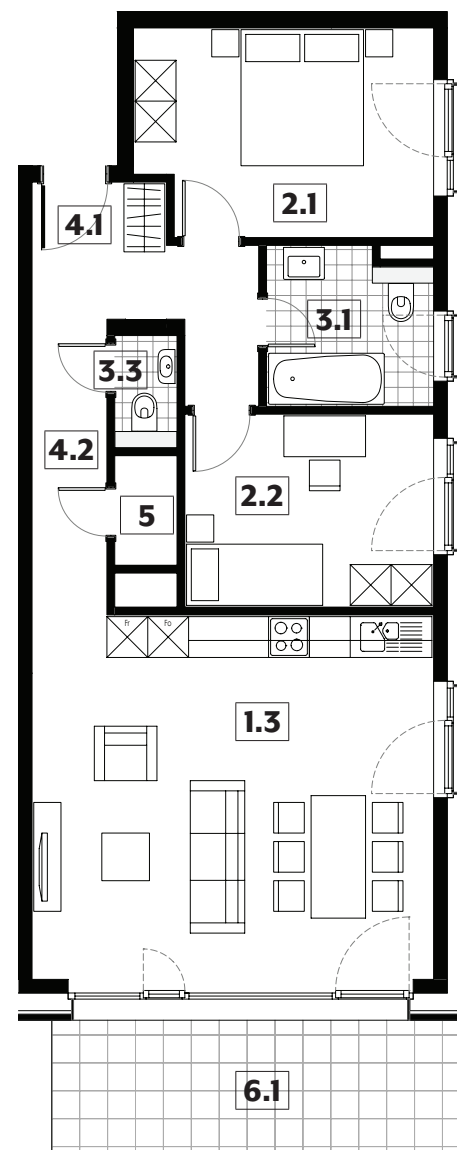
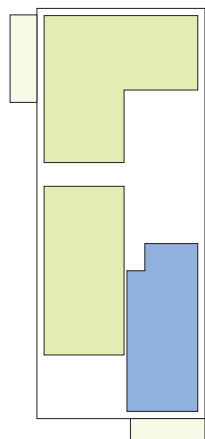
## 073



<b>1.3</b>	séjour/cuisine	<b>31,60m<sup>2</sup></b>
<b>2.1</b>	chambre	<b>13,00m<sup>2</sup></b>
<b>2.2</b>	chambre	<b>10,35m<sup>2</sup></b>
<b>3.1</b>	salle de bains	<b>5,50m<sup>2</sup></b>
<b>3.3</b>	w.c.	<b>1,50m<sup>2</sup></b>
<b>4.1</b>	hall	<b>1,85m<sup>2</sup></b>
<b>4.2</b>	couloir	<b>9,80m<sup>2</sup></b>
<b>5</b>	débarras	<b>1,45m<sup>2</sup></b>
<b>6.1</b>	terrasse	<b>10,10m<sup>2</sup></b>

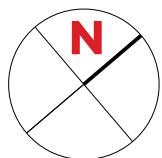
surface habitable

**75,05m<sup>2</sup>**



# APPARTEMENT TYPE

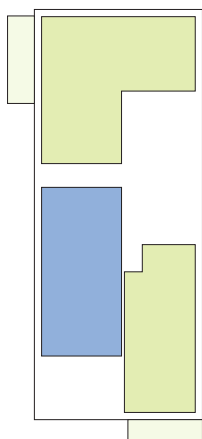
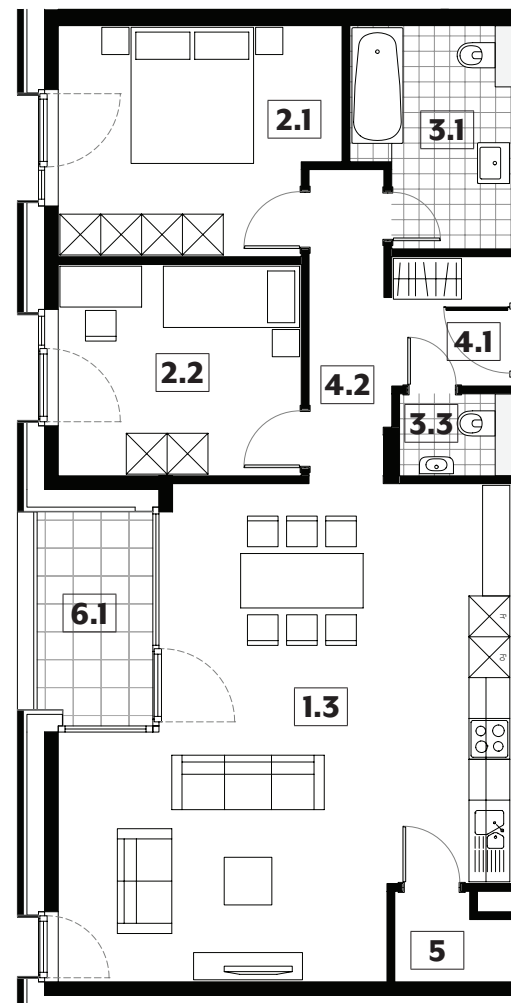
# 074



<b>1.3</b>	séjour/cuisine	<b>39,95m<sup>2</sup></b>
<b>2.1</b>	chambre	<b>13,30m<sup>2</sup></b>
<b>2.2</b>	chambre	<b>11,10m<sup>2</sup></b>
<b>3.1</b>	salle de bains	<b>7,00m<sup>2</sup></b>
<b>3.3</b>	w.c.	<b>2,00m<sup>2</sup></b>
<b>4.1</b>	hall	<b>3,35m<sup>2</sup></b>
<b>4.2</b>	couloir	<b>5,30m<sup>2</sup></b>
<b>5</b>	débarras	<b>2,05m<sup>2</sup></b>
<b>6.1</b>	terrasse	<b>5,25m<sup>2</sup></b>

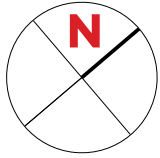
surface habitable

**84,05m<sup>2</sup>**



# APPARTEMENT TYPE

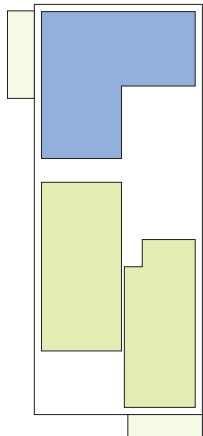
## 075



<b>1.3</b>	séjour/cuisine	<b>53,15m<sup>2</sup></b>
<b>2.1</b>	chambre	<b>13,00m<sup>2</sup></b>
<b>2.2</b>	chambre	<b>10,50m<sup>2</sup></b>
<b>2.3</b>	chambre	<b>10,45m<sup>2</sup></b>
<b>3.1</b>	salle de bains	<b>6,90m<sup>2</sup></b>
<b>3.2</b>	salle de douche	<b>4,35m<sup>2</sup></b>
<b>3.3</b>	w.c.	<b>1,75m<sup>2</sup></b>
<b>4.1</b>	hall	<b>6,45m<sup>2</sup></b>
<b>4.2</b>	couloir	<b>3,55m<sup>2</sup></b>
<b>5</b>	débarras	<b>3,30m<sup>2</sup></b>
<b>7.1</b>	terrasse	<b>16,30m<sup>2</sup></b>

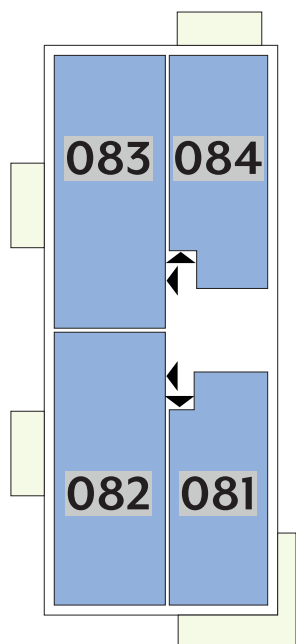
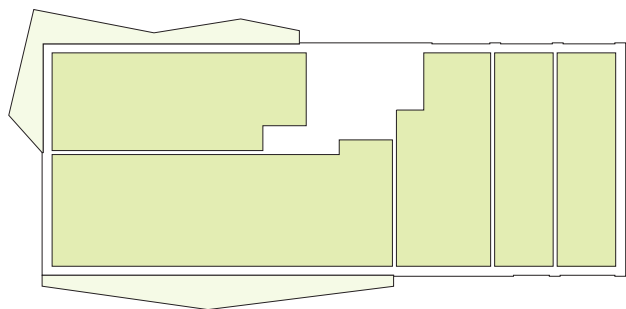
surface habitable

**113,40m<sup>2</sup>**



## APPARTEMENTS

# 1<sup>ER</sup> ÉTAGE

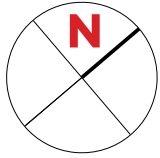


Type	Surface Utile	surface terrasse	prix de vente subventionné TVA 3% *
<b>081</b>	78,72m <sup>2</sup>	17,80m <sup>2</sup>	<b>279.127 €</b>
<b>082</b>	107,51m <sup>2</sup>	9,05m <sup>2</sup>	<b>370.311 €**</b>
<b>083</b>	107,85m <sup>2</sup>	9,05m <sup>2</sup>	<b>371.389 €**</b>
<b>084</b>	78,38m <sup>2</sup>	9,05m <sup>2</sup>	<b>277.403 €</b>

- les surfaces inscrites dans ce tableau peuvent subir de légères modifications dues aux nécessités techniques de la construction.
- surface utile = surface calculée à l'intérieur des murs extérieurs.
- \* primes ACE sont déjà déduites (uniquement pour les acquéreurs bénéficiant d'une prime de construction de l'Etat.)
- \*\* primes ACE et remboursement TVA sont déjà déduits.

# APPARTEMENT TYPE

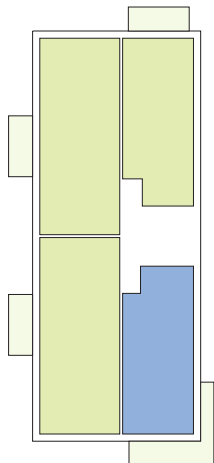
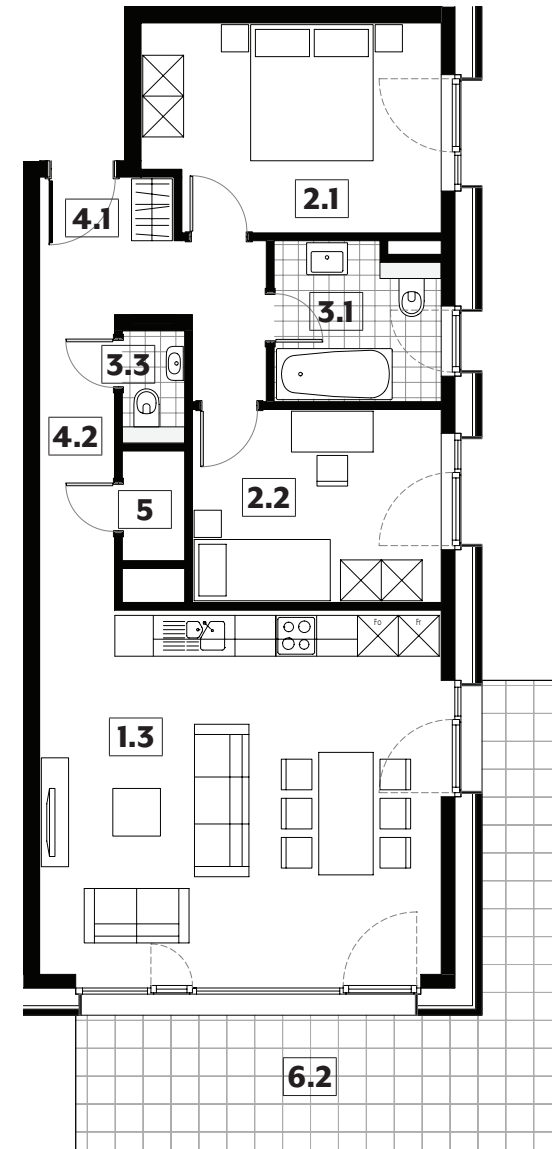
# 081



<b>1.3</b>	séjour/cuisine	<b>31,55m<sup>2</sup></b>
<b>2.1</b>	chambre	<b>13,05m<sup>2</sup></b>
<b>2.2</b>	chambre	<b>10,35m<sup>2</sup></b>
<b>3.1</b>	salle de bains	<b>5,50m<sup>2</sup></b>
<b>3.3</b>	w.c.	<b>1,50m<sup>2</sup></b>
<b>4.1</b>	hall	<b>1,85m<sup>2</sup></b>
<b>4.2</b>	couloir	<b>9,80m<sup>2</sup></b>
<b>5</b>	débarras	<b>1,45m<sup>2</sup></b>
<b>6.2</b>	balcon	<b>17,80m<sup>2</sup></b>

surface habitable

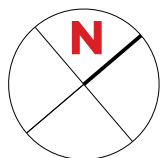
**78,05m<sup>2</sup>**





# APPARTEMENT TYPE

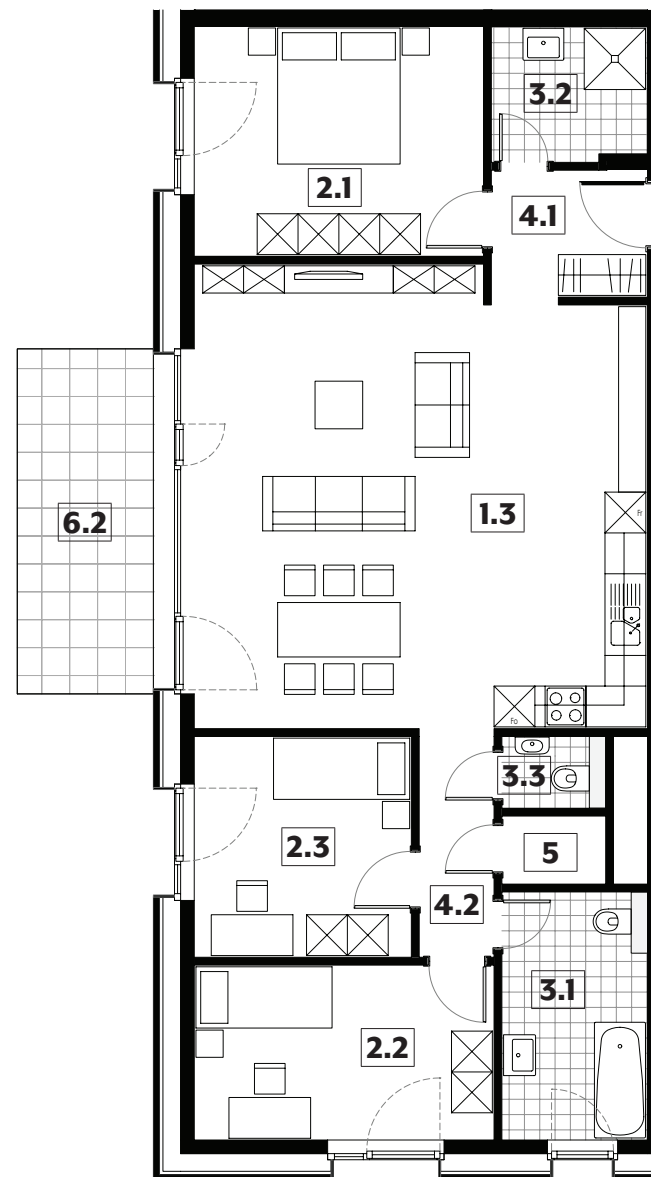
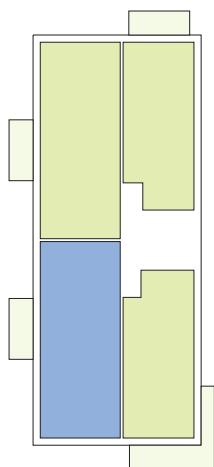
# 082



<b>1.3</b>	séjour/cuisine	<b>44,00m<sup>2</sup></b>
<b>2.1</b>	chambre	<b>14,35m<sup>2</sup></b>
<b>2.2</b>	chambre	<b>11,30m<sup>2</sup></b>
<b>2.3</b>	chambre	<b>10,35m<sup>2</sup></b>
<b>3.1</b>	salle de bains	<b>7,80m<sup>2</sup></b>
<b>3.2</b>	salle de douche	<b>4,50m<sup>2</sup></b>
<b>3.3</b>	w.c.	<b>1,60m<sup>2</sup></b>
<b>4.1</b>	hall	<b>4,40m<sup>2</sup></b>
<b>4.2</b>	couloir	<b>3,70m<sup>2</sup></b>
<b>5</b>	débarras	<b>1,55m<sup>2</sup></b>
<b>7.2</b>	balcon	<b>9,05m<sup>2</sup></b>

surface habitable

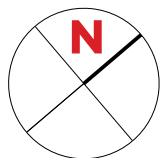
**103,55m<sup>2</sup>**





# APPARTEMENT TYPE

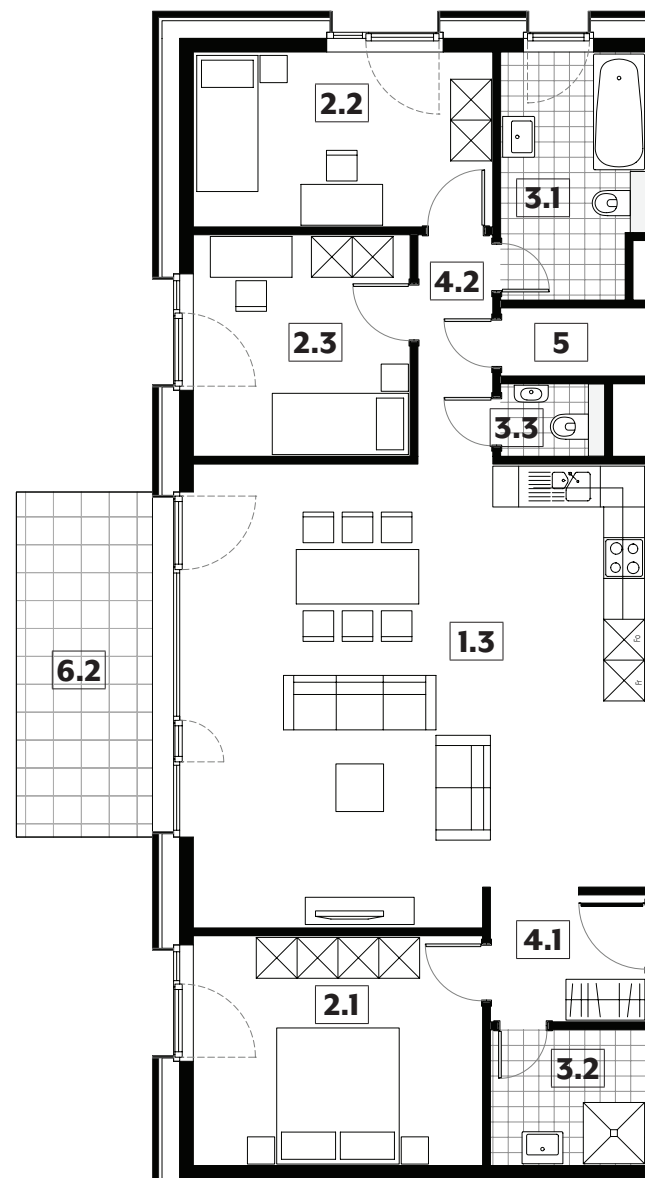
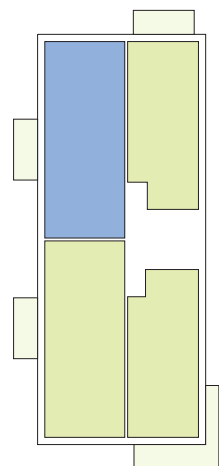
## 083



<b>1.3</b>	séjour/cuisine	<b>43,95m<sup>2</sup></b>
<b>2.1</b>	chambre	<b>14,35m<sup>2</sup></b>
<b>2.2</b>	chambre	<b>11,30m<sup>2</sup></b>
<b>2.3</b>	chambre	<b>10,35m<sup>2</sup></b>
<b>3.1</b>	salle de bains	<b>7,50m<sup>2</sup></b>
<b>3.2</b>	salle de douche	<b>4,60m<sup>2</sup></b>
<b>3.3</b>	w.c.	<b>1,65m<sup>2</sup></b>
<b>4.1</b>	hall	<b>4,45m<sup>2</sup></b>
<b>4.2</b>	couloir	<b>3,70m<sup>2</sup></b>
<b>5</b>	débarras	<b>2,15m<sup>2</sup></b>
<b>7.2</b>	balcon	<b>9,05m<sup>2</sup></b>

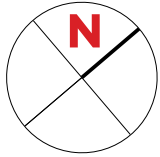
surface habitable

**104,00m<sup>2</sup>**



# APPARTEMENT TYPE

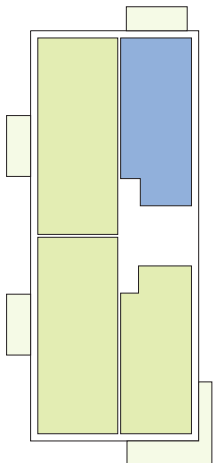
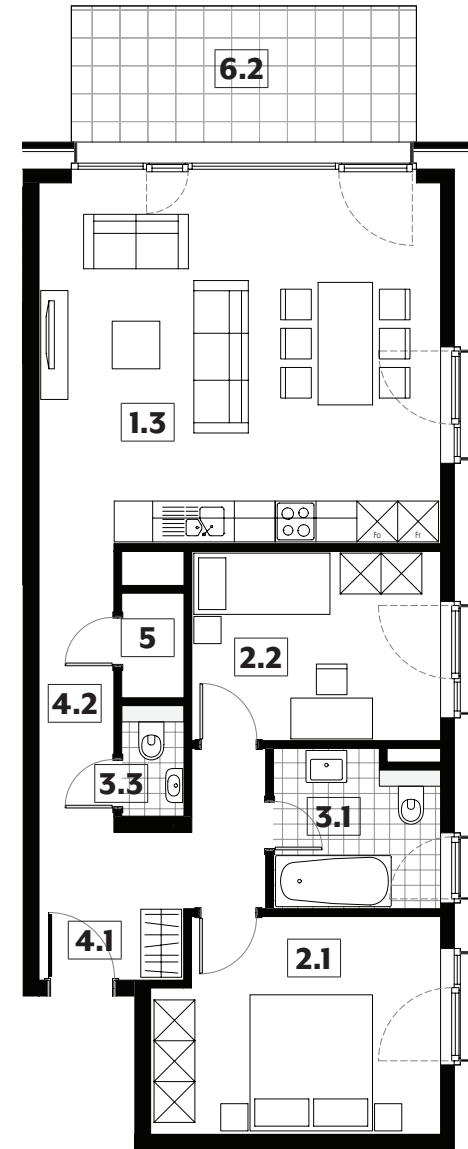
# 084



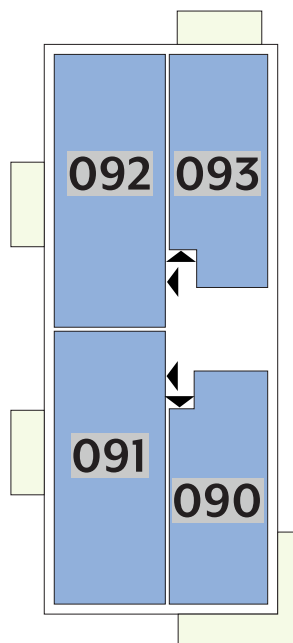
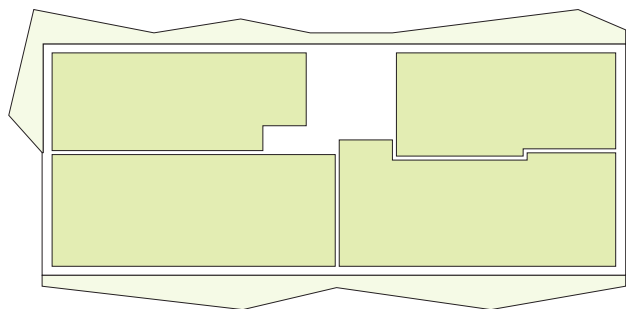
<b>1.3</b>	séjour/cuisine	<b>31,25m<sup>2</sup></b>
<b>2.1</b>	chambre	<b>13,00m<sup>2</sup></b>
<b>2.2</b>	chambre	<b>10,15m<sup>2</sup></b>
<b>3.1</b>	salle de bains	<b>5,50m<sup>2</sup></b>
<b>3.3</b>	w.c.	<b>1,50m<sup>2</sup></b>
<b>4.1</b>	hall	<b>2,25m<sup>2</sup></b>
<b>4.2</b>	couloir	<b>9,75m<sup>2</sup></b>
<b>5</b>	débarras	<b>1,40m<sup>2</sup></b>
<b>6.2</b>	balcon	<b>9,05m<sup>2</sup></b>

surface habitable

**74,80m<sup>2</sup>**



# APPARTEMENTS 2<sup>ÈME</sup> ÉTAGE

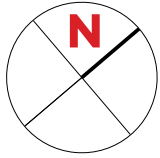


Type	Surface Utile	surface balcon	prix de vente subventionné TVA 3% *
090	78,72m <sup>2</sup>	17,80m <sup>2</sup>	283.678 €
091	107,51m <sup>2</sup>	9,05m <sup>2</sup>	377.447 €**
092	107,85m <sup>2</sup>	9,05m <sup>2</sup>	378.048 €**
093	78,38m <sup>2</sup>	9,05m <sup>2</sup>	281.728 €

- les surfaces inscrites dans ce tableau peuvent subir de légères modifications dues aux nécessités techniques de la construction.
- surface utile = surface calculée à l'intérieur des murs extérieurs.
- \* primes ACE sont déjà déduites (uniquement pour les acquéreurs bénéficiant d'une prime de construction de l'État.)
- \*\* primes ACE et remboursement TVA sont déjà déduits.

# APPARTEMENT TYPE

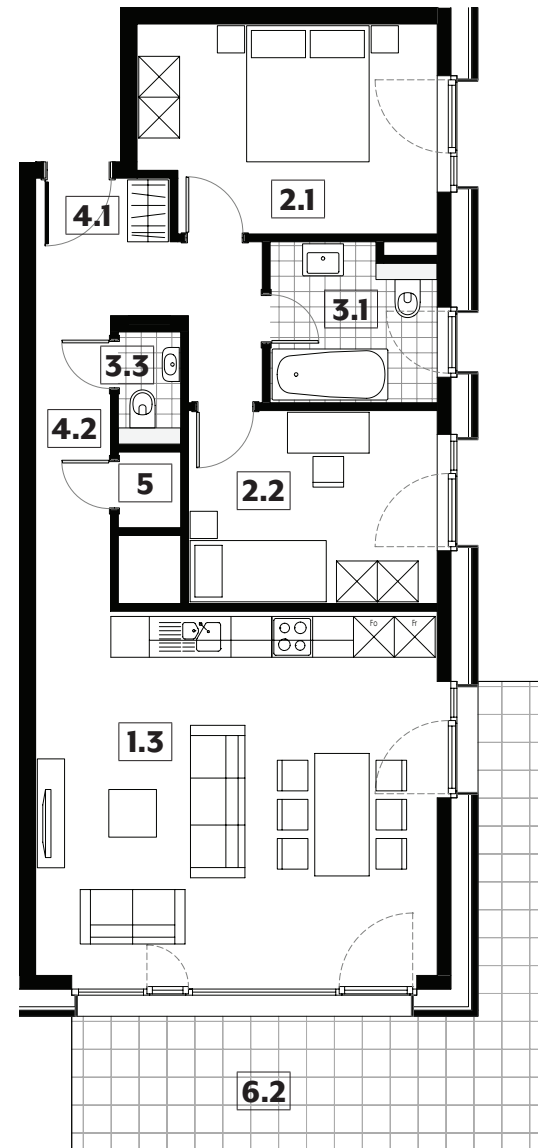
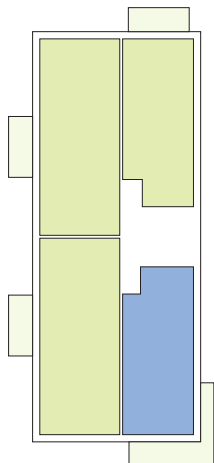
# 090



<b>1.3</b>	séjour/cuisine	<b>31,55m<sup>2</sup></b>
<b>2.1</b>	chambre	<b>13,05m<sup>2</sup></b>
<b>2.2</b>	chambre	<b>10,35m<sup>2</sup></b>
<b>3.1</b>	salle de bains	<b>5,50m<sup>2</sup></b>
<b>3.3</b>	w.c.	<b>1,50m<sup>2</sup></b>
<b>4.1</b>	hall	<b>1,85m<sup>2</sup></b>
<b>4.2</b>	couloir	<b>9,80m<sup>2</sup></b>
<b>5</b>	débarras	<b>1,00m<sup>2</sup></b>
<b>6.2</b>	balcon	<b>17,80m<sup>2</sup></b>

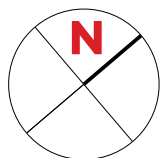
surface habitable

**74,60m<sup>2</sup>**



# APPARTEMENT TYPE

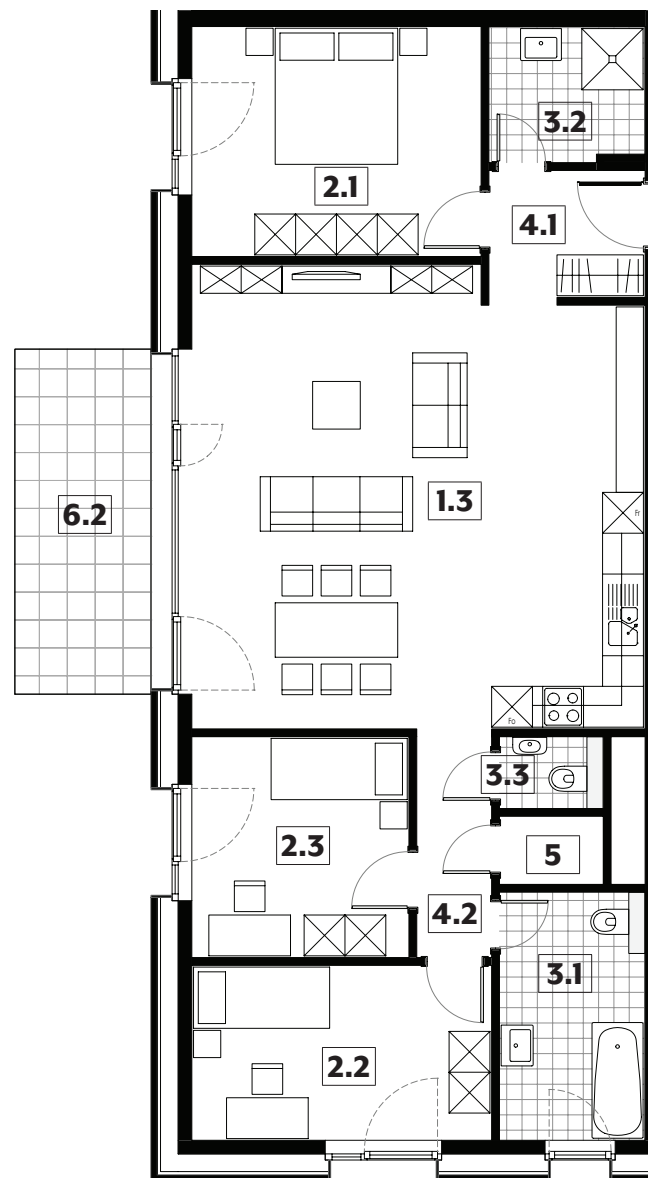
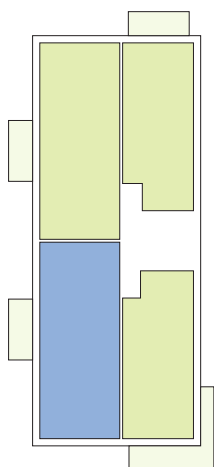
# 091



<b>1.3</b>	séjour/cuisine	<b>44,00m<sup>2</sup></b>
<b>2.1</b>	chambre	<b>14,35m<sup>2</sup></b>
<b>2.2</b>	chambre	<b>11,30m<sup>2</sup></b>
<b>2.3</b>	chambre	<b>10,35m<sup>2</sup></b>
<b>3.1</b>	salle de bains	<b>7,80m<sup>2</sup></b>
<b>3.2</b>	salle de douche	<b>4,50m<sup>2</sup></b>
<b>3.3</b>	w.c.	<b>1,60m<sup>2</sup></b>
<b>4.1</b>	hall	<b>4,40m<sup>2</sup></b>
<b>4.2</b>	couloir	<b>3,70m<sup>2</sup></b>
<b>5</b>	débarras	<b>1,55m<sup>2</sup></b>
<b>7.2</b>	balcon	<b>9,05m<sup>2</sup></b>

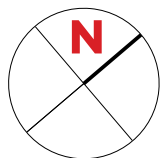
surface habitable

**103,55m<sup>2</sup>**



# APPARTEMENT TYPE

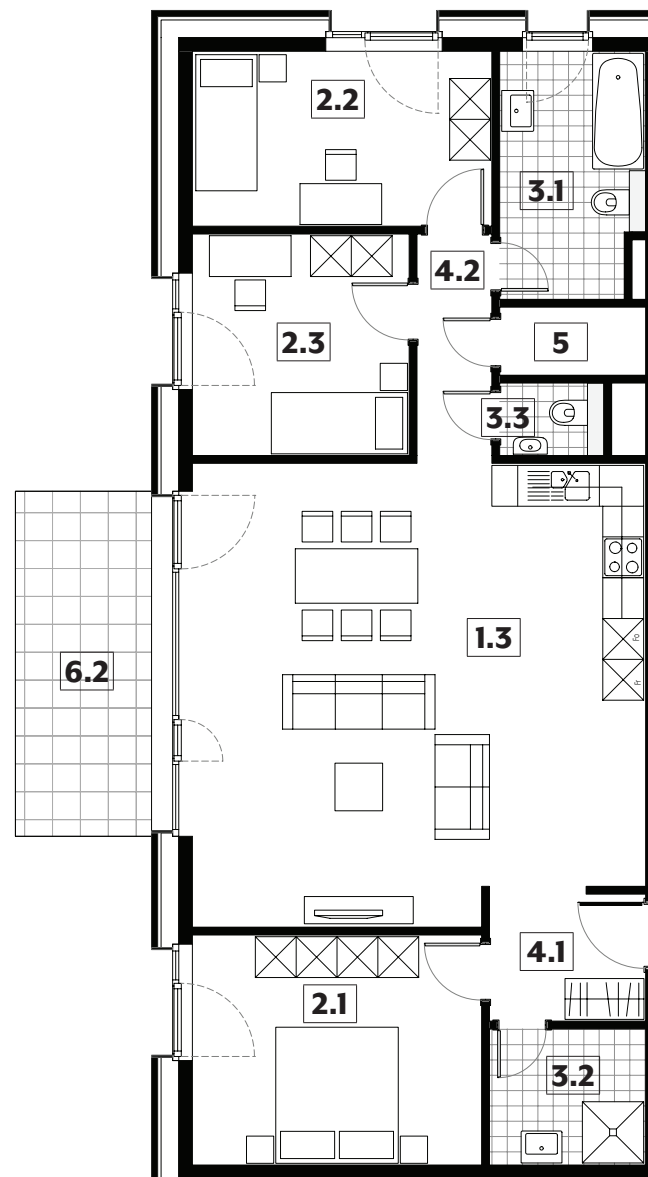
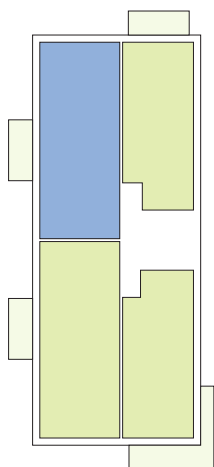
## 092



<b>1.3</b>	séjour/cuisine	<b>43,95m<sup>2</sup></b>
<b>2.1</b>	chambre	<b>14,35m<sup>2</sup></b>
<b>2.2</b>	chambre	<b>11,30m<sup>2</sup></b>
<b>2.3</b>	chambre	<b>10,35m<sup>2</sup></b>
<b>3.1</b>	salle de bains	<b>7,50m<sup>2</sup></b>
<b>3.2</b>	salle de douche	<b>4,60m<sup>2</sup></b>
<b>3.3</b>	w.c.	<b>1,65m<sup>2</sup></b>
<b>4.1</b>	hall	<b>4,45m<sup>2</sup></b>
<b>4.2</b>	couloir	<b>3,70m<sup>2</sup></b>
<b>5</b>	débarras	<b>2,15m<sup>2</sup></b>
<b>7.2</b>	balcon	<b>9,05m<sup>2</sup></b>

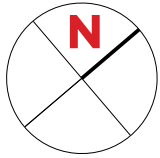
surface habitable

**104,00m<sup>2</sup>**



# APPARTEMENT TYPE

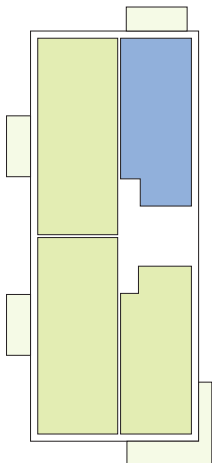
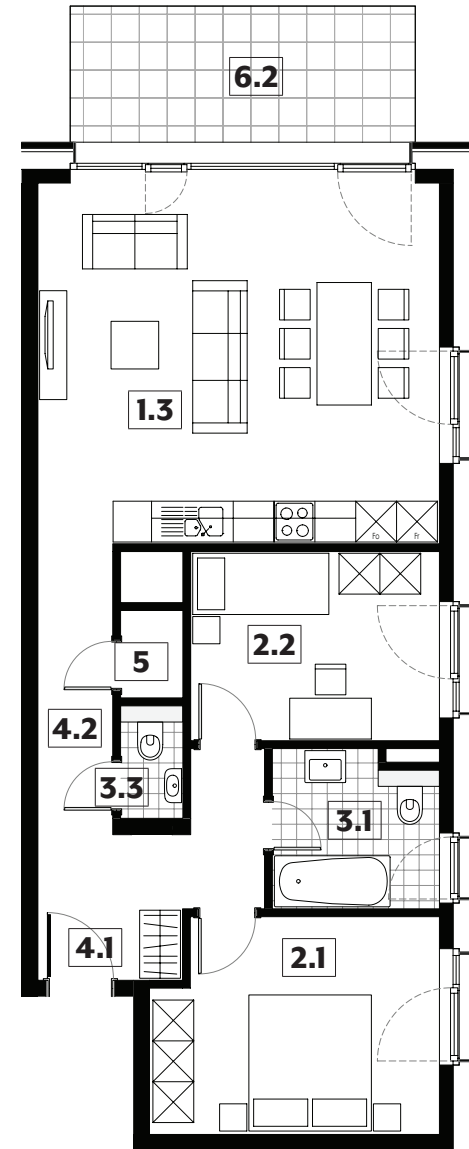
# 093



<b>1.3</b>	séjour/cuisine	<b>31,25m<sup>2</sup></b>
<b>2.1</b>	chambre	<b>13,00m<sup>2</sup></b>
<b>2.2</b>	chambre	<b>10,15m<sup>2</sup></b>
<b>3.1</b>	salle de bains	<b>5,50m<sup>2</sup></b>
<b>3.3</b>	w.c.	<b>1,50m<sup>2</sup></b>
<b>4.1</b>	hall	<b>2,25m<sup>2</sup></b>
<b>4.2</b>	couloir	<b>9,70m<sup>2</sup></b>
<b>5</b>	débarras	<b>1,20m<sup>2</sup></b>
<b>6.2</b>	balcon	<b>9,05m<sup>2</sup></b>

surface habitable

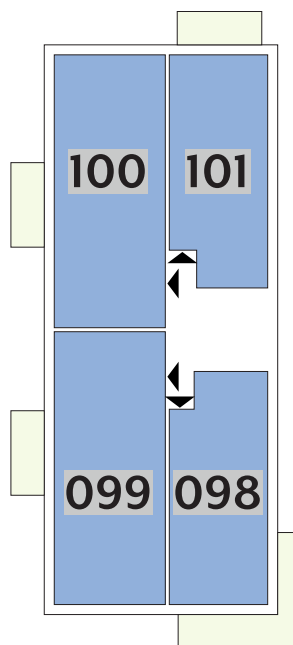
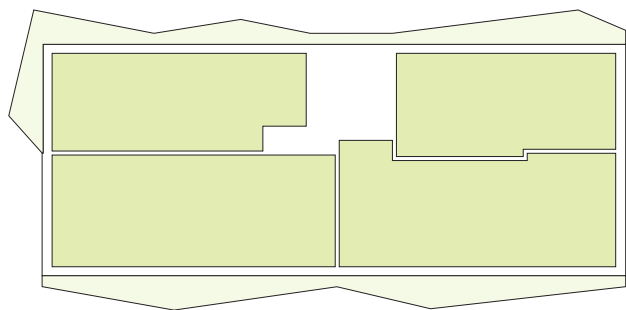
**74,55m<sup>2</sup>**





# APPARTEMENTS

## 3<sup>ÈME</sup> ÉTAGE

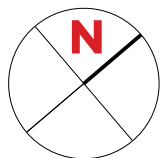


Type	Surface Utile	surface balcon	prix de vente subventionné TVA 3% *
<b>098</b>	78,72m <sup>2</sup>	17,80m <sup>2</sup>	<b>288.248 €</b>
<b>099</b>	107,51m <sup>2</sup>	9,05m <sup>2</sup>	<b>384.091 €**</b>
<b>100</b>	107,69m <sup>2</sup>	9,05m <sup>2</sup>	<b>384.322 €**</b>
<b>101</b>	78,38m <sup>2</sup>	9,05m <sup>2</sup>	<b>286.030 €</b>

- les surfaces inscrites dans ce tableau peuvent subir de légères modifications dues aux nécessités techniques de la construction.
- surface utile = surface calculée à l'intérieur des murs extérieurs.
- \* primes ACE sont déjà déduites (uniquement pour les acquéreurs bénéficiant d'une prime de construction de l'État.)
- \*\* primes ACE et remboursement TVA sont déjà déduits.

# APPARTEMENT TYPE

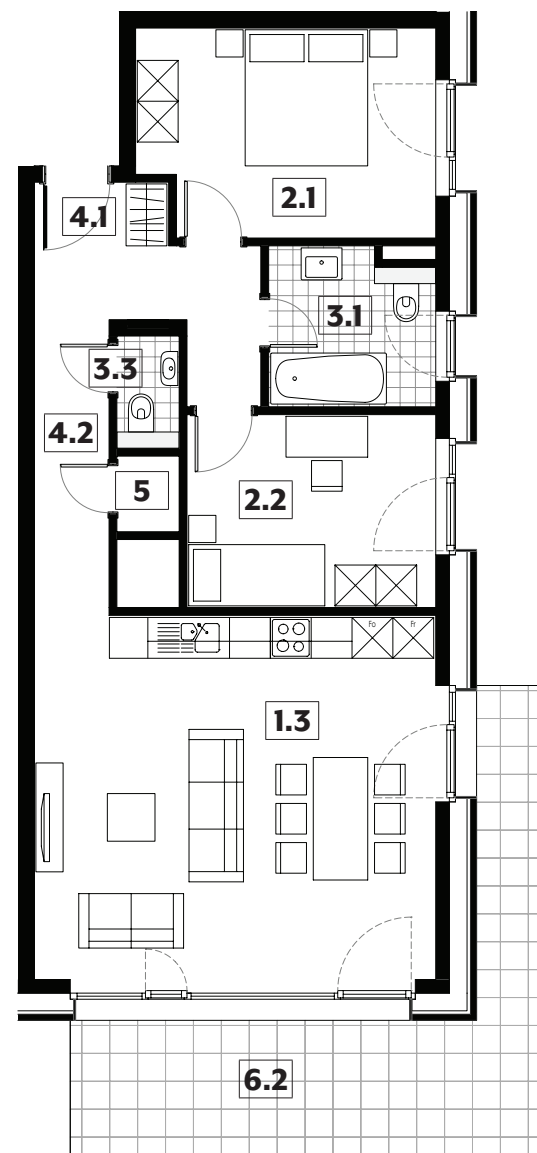
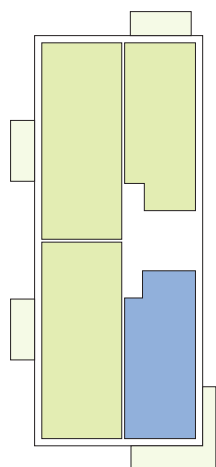
# 098



<b>1.3</b>	séjour/cuisine	<b>31,55m<sup>2</sup></b>
<b>2.1</b>	chambre	<b>13,05m<sup>2</sup></b>
<b>2.2</b>	chambre	<b>10,35m<sup>2</sup></b>
<b>3.1</b>	salle de bains	<b>5,50m<sup>2</sup></b>
<b>3.3</b>	w.c.	<b>1,50m<sup>2</sup></b>
<b>4.1</b>	hall	<b>1,85m<sup>2</sup></b>
<b>4.2</b>	couloir	<b>9,80m<sup>2</sup></b>
<b>5</b>	débarras	<b>1,00m<sup>2</sup></b>
<b>6.2</b>	balcon	<b>17,80m<sup>2</sup></b>

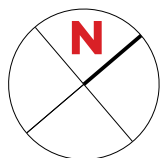
surface habitable

**74,60m<sup>2</sup>**



# APPARTEMENT TYPE

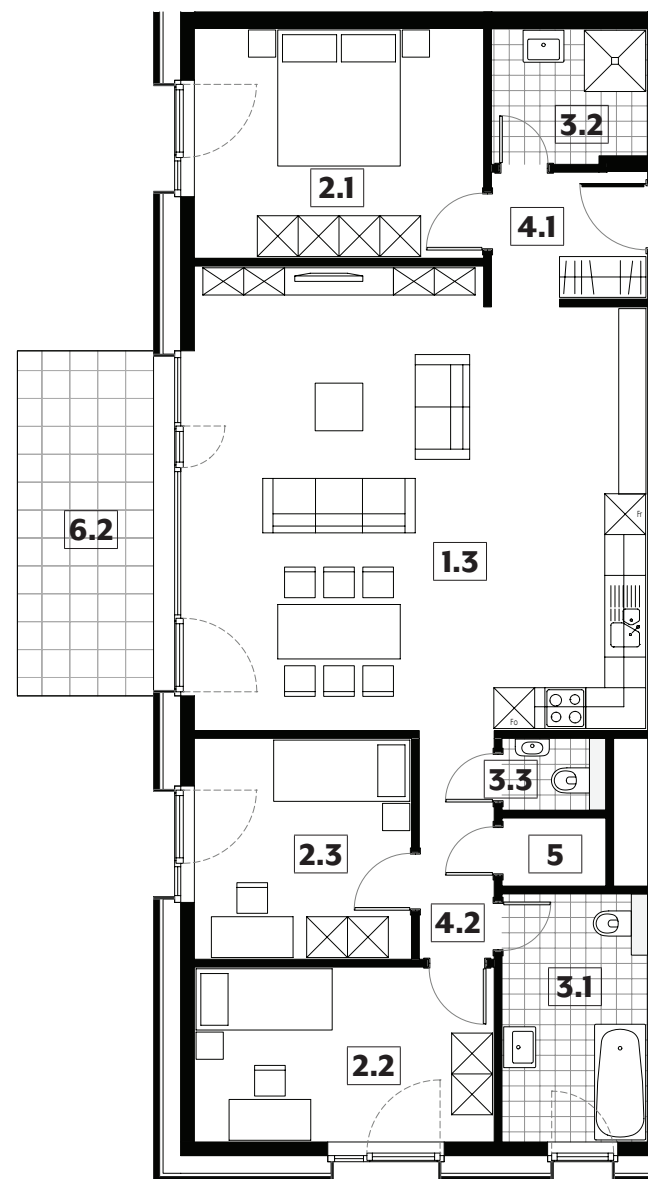
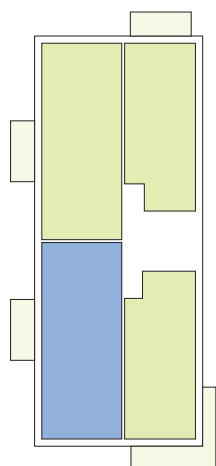
# 099



<b>1.3</b>	séjour/cuisine	<b>44,00m<sup>2</sup></b>
<b>2.1</b>	chambre	<b>14,35m<sup>2</sup></b>
<b>2.2</b>	chambre	<b>11,30m<sup>2</sup></b>
<b>2.3</b>	chambre	<b>10,35m<sup>2</sup></b>
<b>3.1</b>	salle de bains	<b>7,80m<sup>2</sup></b>
<b>3.2</b>	salle de douche	<b>4,50m<sup>2</sup></b>
<b>3.3</b>	w.c.	<b>1,60m<sup>2</sup></b>
<b>4.1</b>	hall	<b>4,40m<sup>2</sup></b>
<b>4.2</b>	couloir	<b>3,70m<sup>2</sup></b>
<b>5</b>	débarras	<b>1,55m<sup>2</sup></b>
<b>7.2</b>	balcon	<b>9,05m<sup>2</sup></b>

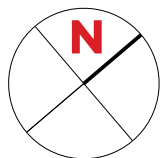
surface habitable

**103,55m<sup>2</sup>**



# APPARTEMENT TYPE

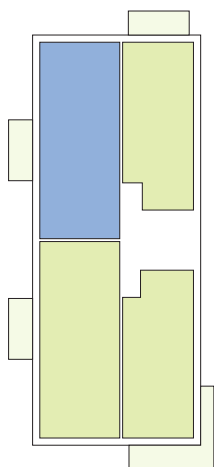
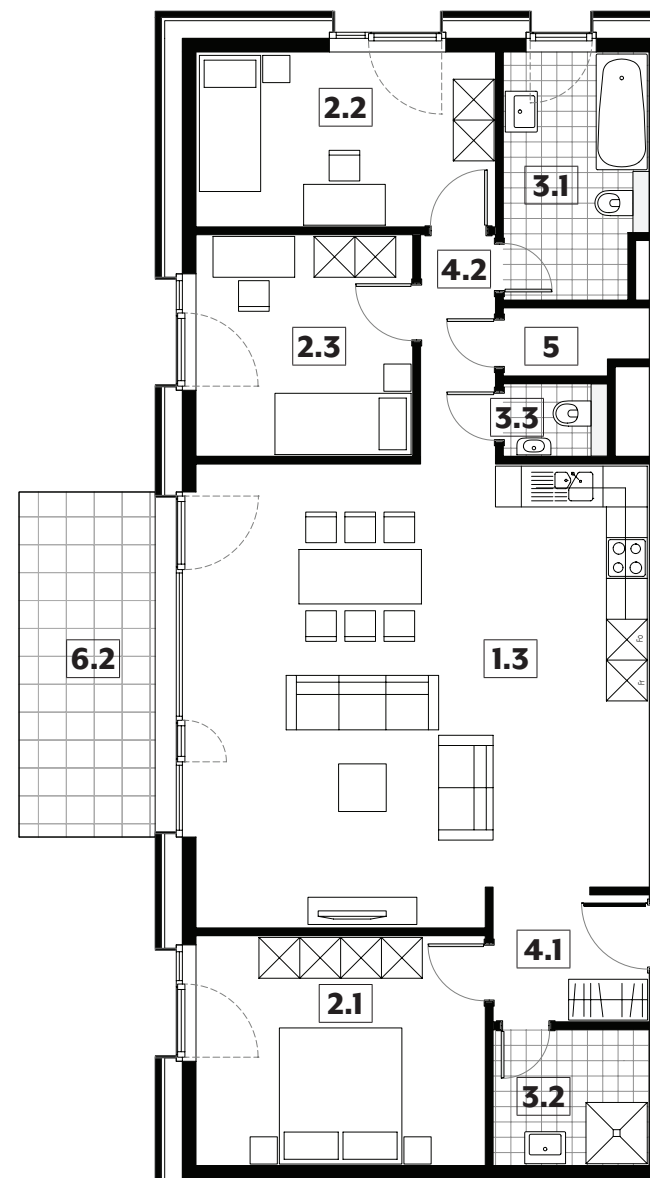
# 100



<b>1.3</b>	séjour/cuisine	<b>43,95m<sup>2</sup></b>
<b>2.1</b>	chambre	<b>14,35m<sup>2</sup></b>
<b>2.2</b>	chambre	<b>11,30m<sup>2</sup></b>
<b>2.3</b>	chambre	<b>10,35m<sup>2</sup></b>
<b>3.1</b>	salle de bains	<b>7,50m<sup>2</sup></b>
<b>3.2</b>	salle de douche	<b>4,60m<sup>2</sup></b>
<b>3.3</b>	w.c.	<b>1,65m<sup>2</sup></b>
<b>4.1</b>	hall	<b>4,45m<sup>2</sup></b>
<b>4.2</b>	couloir	<b>3,70m<sup>2</sup></b>
<b>5</b>	débarras	<b>2,00m<sup>2</sup></b>
<b>7.2</b>	balcon	<b>9,05m<sup>2</sup></b>

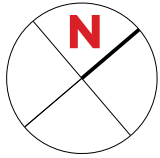
surface habitable

**103,85m<sup>2</sup>**



# APPARTEMENT TYPE

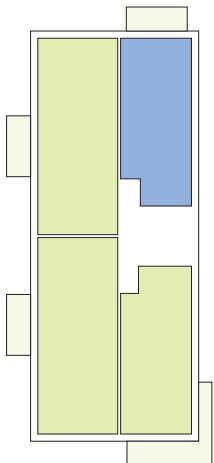
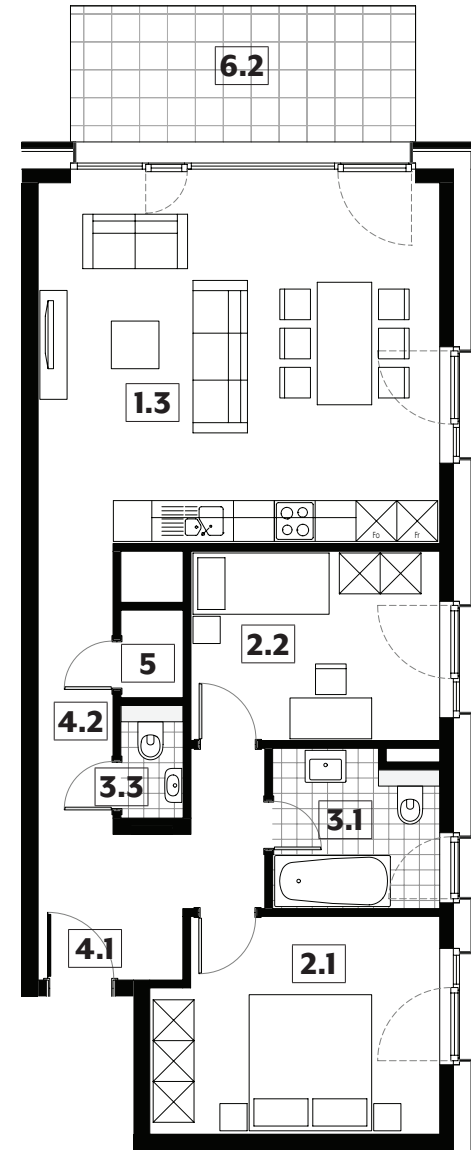
# 101



<b>1.3</b>	séjour/cuisine	<b>31,25m<sup>2</sup></b>
<b>2.1</b>	chambre	<b>13,00m<sup>2</sup></b>
<b>2.2</b>	chambre	<b>10,15m<sup>2</sup></b>
<b>3.1</b>	salle de bains	<b>5,50m<sup>2</sup></b>
<b>3.3</b>	w.c.	<b>1,50m<sup>2</sup></b>
<b>4.1</b>	hall	<b>2,25m<sup>2</sup></b>
<b>4.2</b>	couloir	<b>9,70m<sup>2</sup></b>
<b>5</b>	débarras	<b>1,20m<sup>2</sup></b>
<b>6.2</b>	balcon	<b>9,05m<sup>2</sup></b>

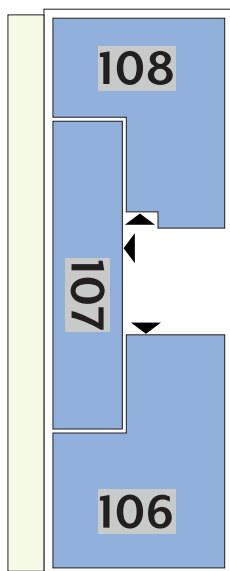
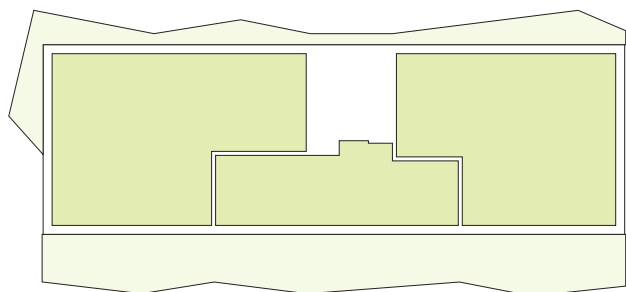
surface habitable

**74,55m<sup>2</sup>**



# APPARTEMENTS

## 4<sup>ÈME</sup> ÉTAGE

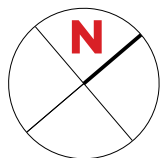


Type	Surface Utile	surface terrasse	prix de vente subventionné TVA 3% *
<b>106</b>	117,70m <sup>2</sup>	16,45m <sup>2</sup>	<b>420.569 €**</b>
<b>107</b>	76,79m <sup>2</sup>	37,30m <sup>2</sup>	<b>301.160 €</b>
<b>108</b>	95,98m <sup>2</sup>	12,15m <sup>2</sup>	<b>331.898 €</b>

- les surfaces inscrites dans ce tableau peuvent subir de légères modifications dues aux nécessités techniques de la construction.
- surface utile = surface calculée à l'intérieur des murs extérieurs.
- \* primes ACE sont déjà déduites (uniquement pour les acquéreurs bénéficiant d'une prime de construction de l'État.)
- \*\* primes ACE et remboursement TVA sont déjà déduits.

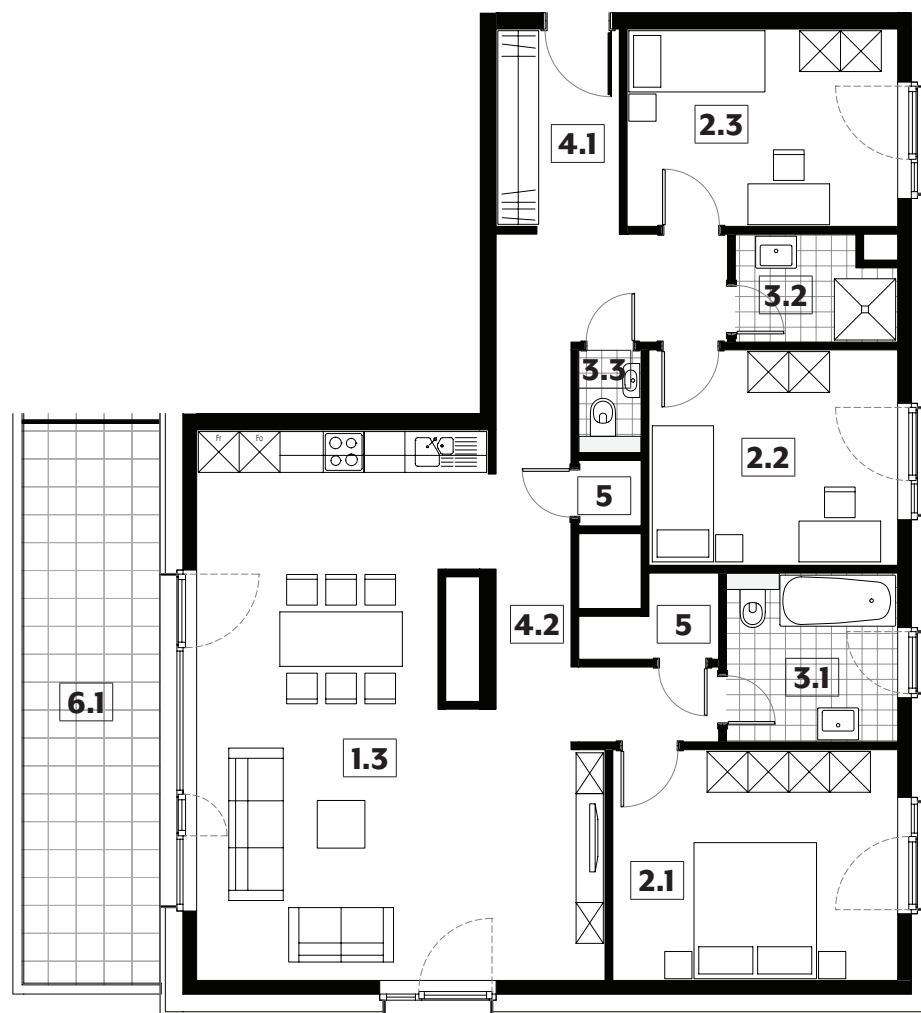
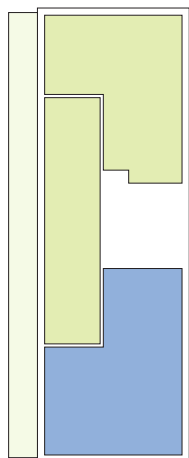
# APPARTEMENT TYPE

# 106



<b>1.3</b>	séjour/cuisine	<b>39,30m<sup>2</sup></b>
<b>2.1</b>	chambre	<b>14,20m<sup>2</sup></b>
<b>2.2</b>	chambre	<b>11,55m<sup>2</sup></b>
<b>2.3</b>	chambre	<b>11,55m<sup>2</sup></b>
<b>3.1</b>	salle de bains	<b>6,25m<sup>2</sup></b>
<b>3.2</b>	salle de douche	<b>3,50m<sup>2</sup></b>
<b>3.3</b>	w.c.	<b>1,40m<sup>2</sup></b>
<b>4.1</b>	hall	<b>5,40m<sup>2</sup></b>
<b>4.2</b>	couloir	<b>14,25m<sup>2</sup></b>
<b>5</b>	débarras	<b>1,95m<sup>2</sup></b>
<b>5</b>	débarras	<b>0,90m<sup>2</sup></b>
<b>6.1</b>	terrasse	<b>16,45m<sup>2</sup></b>

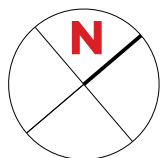
surface habitable  
**110,25m<sup>2</sup>**





# APPARTEMENT TYPE

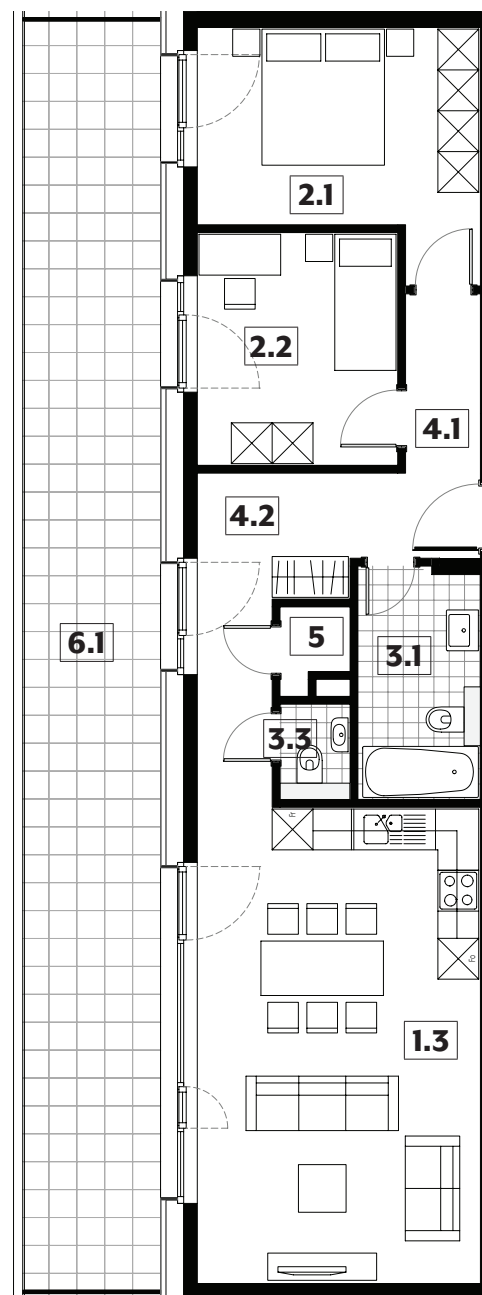
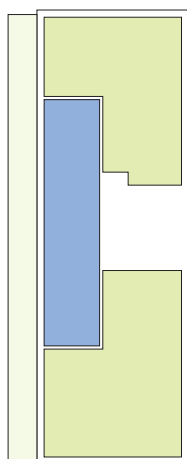
# 107



<b>1.3</b>	séjour/cuisine	<b>29,10m<sup>2</sup></b>
<b>2.1</b>	chambre	<b>13,05m<sup>2</sup></b>
<b>2.2</b>	chambre	<b>10,05m<sup>2</sup></b>
<b>3.1</b>	salle de bains	<b>6,10m<sup>2</sup></b>
<b>3.3</b>	w.c.	<b>1,45m<sup>2</sup></b>
<b>4.1</b>	hall	<b>4,25m<sup>2</sup></b>
<b>4.2</b>	couloir	<b>8,55m<sup>2</sup></b>
<b>5</b>	débarras	<b>1,15m<sup>2</sup></b>
<b>6.1</b>	terrasse	<b>37,30m<sup>2</sup></b>

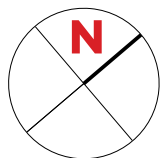
surface habitable

**73,70m<sup>2</sup>**



# APPARTEMENT TYPE

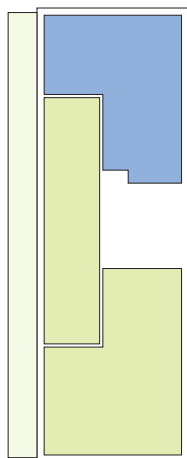
# 108

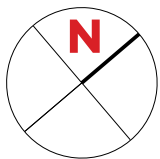


<b>1.3</b>	séjour/cuisine	<b>36,10m<sup>2</sup></b>
<b>2.1</b>	chambre	<b>15,65m<sup>2</sup></b>
<b>2.2</b>	chambre	<b>13,95m<sup>2</sup></b>
<b>3.1</b>	salle de bains	<b>6,85m<sup>2</sup></b>
<b>3.3</b>	w.c.	<b>2,10m<sup>2</sup></b>
<b>4.1</b>	hall	<b>3,80m<sup>2</sup></b>
<b>4.2</b>	couloir	<b>11,5m<sup>2</sup></b>
<b>5</b>	débarras	<b>1,50m<sup>2</sup></b>
<b>6.1</b>	terrasse	<b>12,15m<sup>2</sup></b>

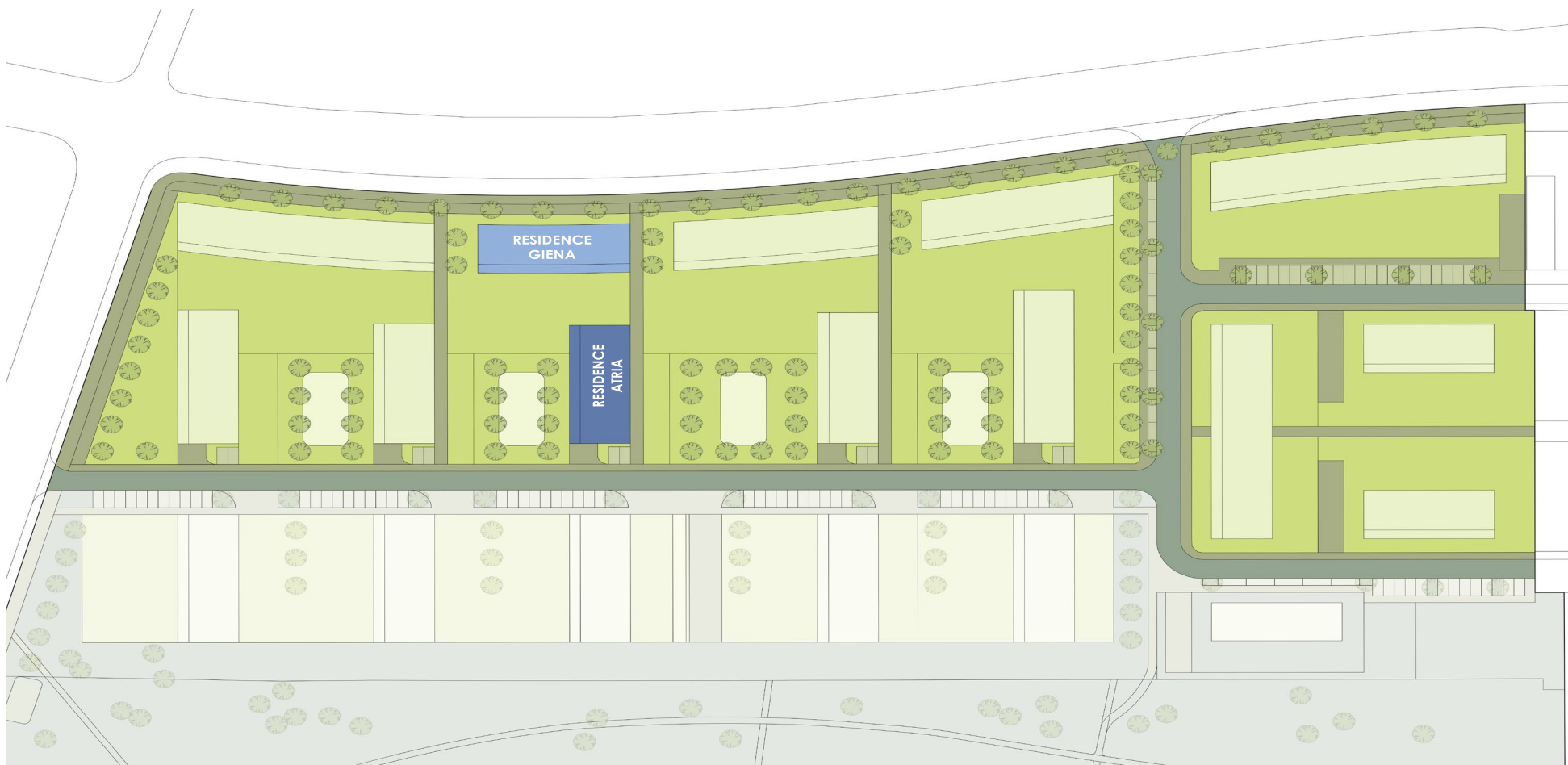
surface habitable

**91,45m<sup>2</sup>**





# IMPLANTATION





© STDM image non contractuelle





© STDM image non contractuelle





© STDM image non contractuelle

# SNHBM

Société Nationale des  
Habitations à Bon Marché

2b, rue Kalchesbruck  
L-1852 Luxembourg

Carmen Sousa  
Tél. (+352) 448292 - 557  
carmen.sousa@snhbm.lu

[snhbm.lu](http://snhbm.lu)