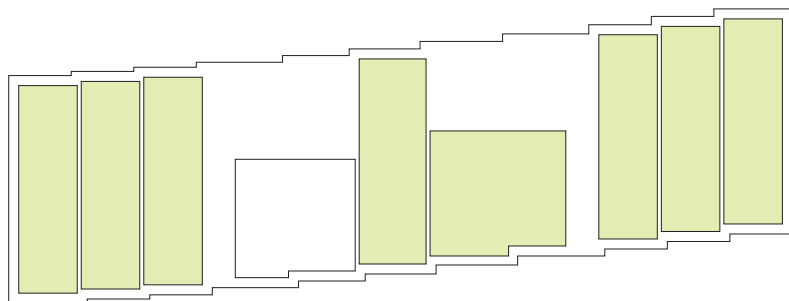


# Résidence ISIDA



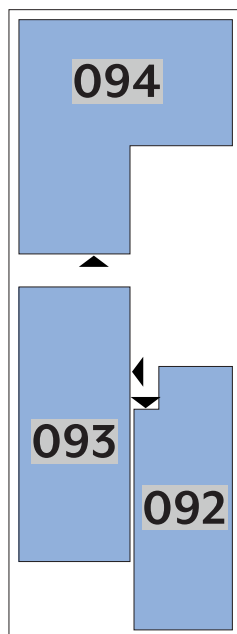
## APPARTEMENTS

# REZ-DE-CHAUSSÉE



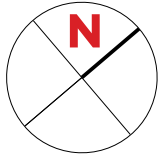
Type	Surface Utile	surface terrasse	prix de vente subventionné TVA 3% *
<b>092</b>	89,03m <sup>2</sup>	10,10m <sup>2</sup>	<b>287.509 €</b>
<b>093</b>	103,35m <sup>2</sup>	5,55m <sup>2</sup>	<b>343.084 €**</b>
<b>094</b>	139,99m <sup>2</sup>	22,30m <sup>2</sup>	<b>484.247 €**<sup>1</sup></b>

- les surfaces inscrites dans ce tableau peuvent subir de légères modifications dues aux nécessités techniques de la construction.
- surface utile = surface calculée à l'intérieur des murs extérieurs.
- \* primes ACE sont déjà déduites (uniquement pour les acquéreurs bénéficiant d'une prime de construction de l'Etat.)
- \*\* primes ACE et remboursement TVA sont déjà déduits.
- <sup>1</sup> logement subventionné sous conditions spécifiques.



# APPARTEMENT TYPE

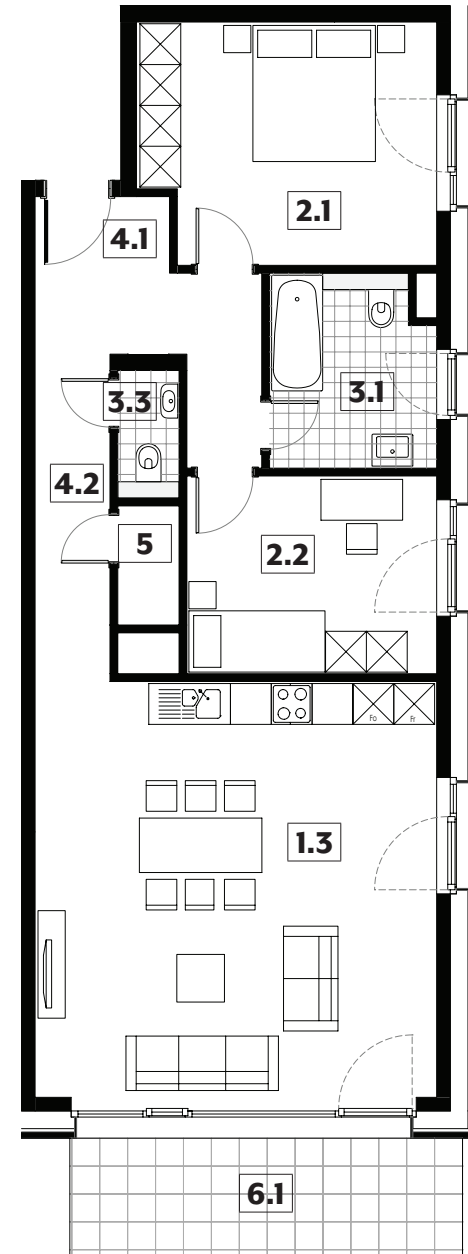
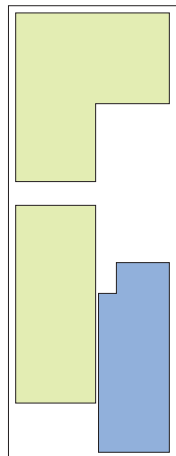
# 092



<b>1.3</b>	séjour/cuisine	<b>36,05m<sup>2</sup></b>
<b>2.1</b>	chambre	<b>15,10m<sup>2</sup></b>
<b>2.2</b>	chambre	<b>10,65m<sup>2</sup></b>
<b>3.1</b>	salle de bains	<b>6,70m<sup>2</sup></b>
<b>3.3</b>	w.c.	<b>1,70m<sup>2</sup></b>
<b>4.1</b>	hall	<b>2,20m<sup>2</sup></b>
<b>4.2</b>	couloir	<b>11,10m<sup>2</sup></b>
<b>5</b>	débarras	<b>1,60m<sup>2</sup></b>
<b>6.1</b>	terrasse	<b>10,10m<sup>2</sup></b>

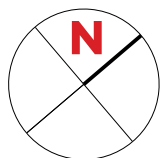
surface habitable

**85,10m<sup>2</sup>**



# APPARTEMENT TYPE

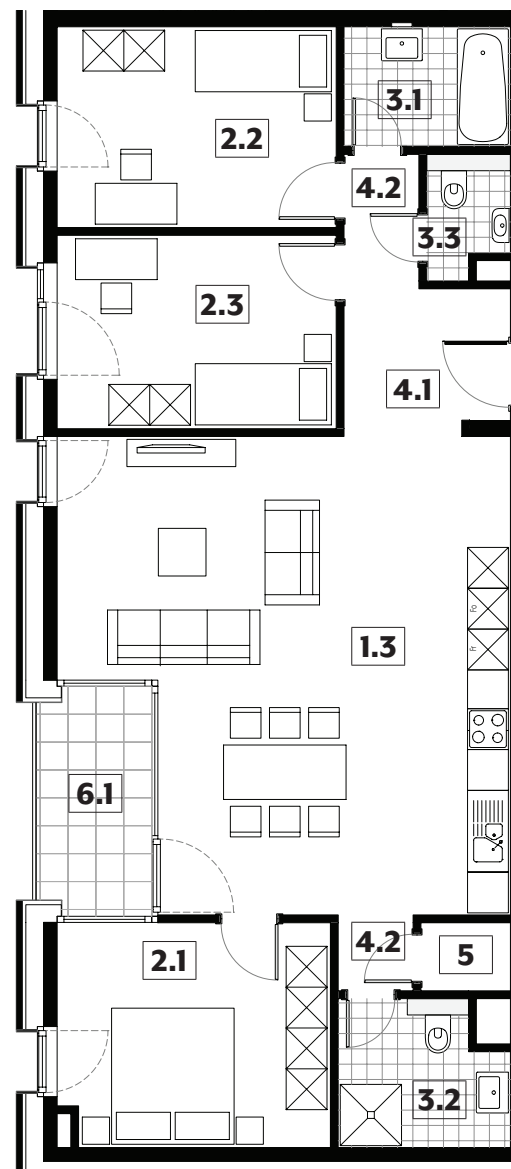
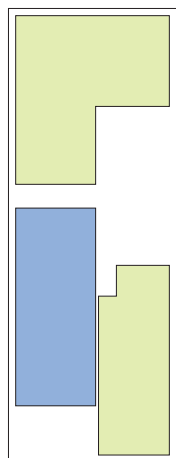
# 093



<b>1.3</b>	séjour/cuisine	<b>41,70m<sup>2</sup></b>
<b>2.1</b>	chambre	<b>13,10m<sup>2</sup></b>
<b>2.2</b>	chambre	<b>12,10m<sup>2</sup></b>
<b>2.3</b>	chambre	<b>11,65m<sup>2</sup></b>
<b>3.1</b>	salle de bains	<b>4,30m<sup>2</sup></b>
<b>3.2</b>	salle de douche	<b>5,05m<sup>2</sup></b>
<b>3.3</b>	w.c.	<b>2,05m<sup>2</sup></b>
<b>4.1</b>	hall	<b>5,15m<sup>2</sup></b>
<b>4.2</b>	couloir	<b>2,15m<sup>2</sup></b>
<b>4.2</b>	couloir	<b>1,25m<sup>2</sup></b>
<b>5</b>	débarras	<b>1,30m<sup>2</sup></b>
<b>6.1</b>	terrasse	<b>5,55m<sup>2</sup></b>

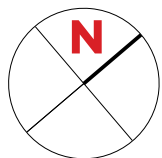
surface habitable

**99,80m<sup>2</sup>**



# APPARTEMENT TYPE

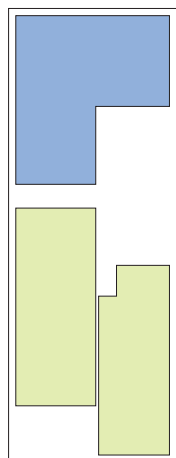
# 094



<b>1.3</b>	séjour/cuisine	<b>48,45m<sup>2</sup></b>
<b>2.1</b>	chambre	<b>17,10m<sup>2</sup></b>
<b>2.2</b>	chambre	<b>12,80m<sup>2</sup></b>
<b>2.3</b>	chambre	<b>12,70m<sup>2</sup></b>
<b>2.4</b>	chambre	<b>10,95m<sup>2</sup></b>
<b>3.1</b>	salle de bains	<b>6,45m<sup>2</sup></b>
<b>3.2</b>	salle de douche	<b>4,60m<sup>2</sup></b>
<b>3.3</b>	w.c.	<b>1,90m<sup>2</sup></b>
<b>4.1</b>	hall	<b>4,05m<sup>2</sup></b>
<b>4.2</b>	couloir	<b>9,45m<sup>2</sup></b>
<b>5</b>	débarras	<b>2,70m<sup>2</sup></b>
<b>5</b>	débarras	<b>2,25m<sup>2</sup></b>
<b>6.1</b>	terrasse	<b>22,30m<sup>2</sup></b>

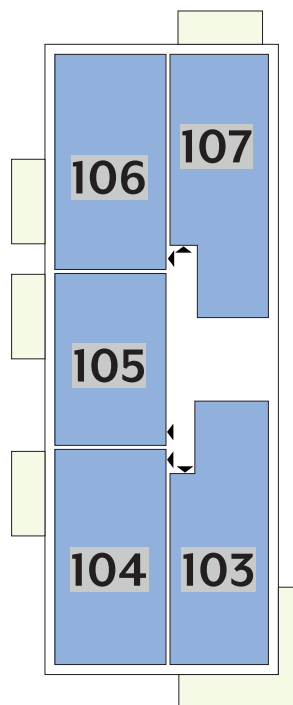
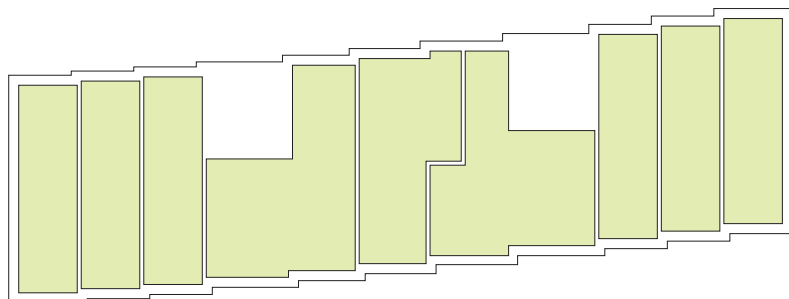
surface habitable

**133,40m<sup>2</sup>**



## APPARTEMENTS

# 1<sup>ER</sup> ÉTAGE

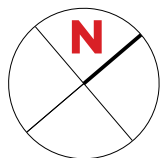


Type	Surface Utile	surface terrasse	prix de vente subventionné TVA 3% *
<b>103</b>	86,29m <sup>2</sup>	18,15m <sup>2</sup>	<b>297.842 €</b>
<b>104</b>	84,83m <sup>2</sup>	9,05m <sup>2</sup>	<b>293.159 €</b>
<b>105</b>	67,97m <sup>2</sup>	9,05m <sup>2</sup>	<b>226.185 €</b>
<b>106</b>	85,19m <sup>2</sup>	9,05m <sup>2</sup>	<b>293.933 €</b>
<b>107</b>	85,73m <sup>2</sup>	9,05m <sup>2</sup>	<b>285.824 €</b>

- les surfaces inscrites dans ce tableau peuvent subir de légères modifications dues aux nécessités techniques de la construction.
- surface utile = surface calculée à l'intérieur des murs extérieurs.
- \* primes ACE sont déjà déduites (uniquement pour les acquéreurs bénéficiant d'une prime de construction de l'Etat.)
- \*\* primes ACE et remboursement TVA sont déjà déduits.

# APPARTEMENT TYPE

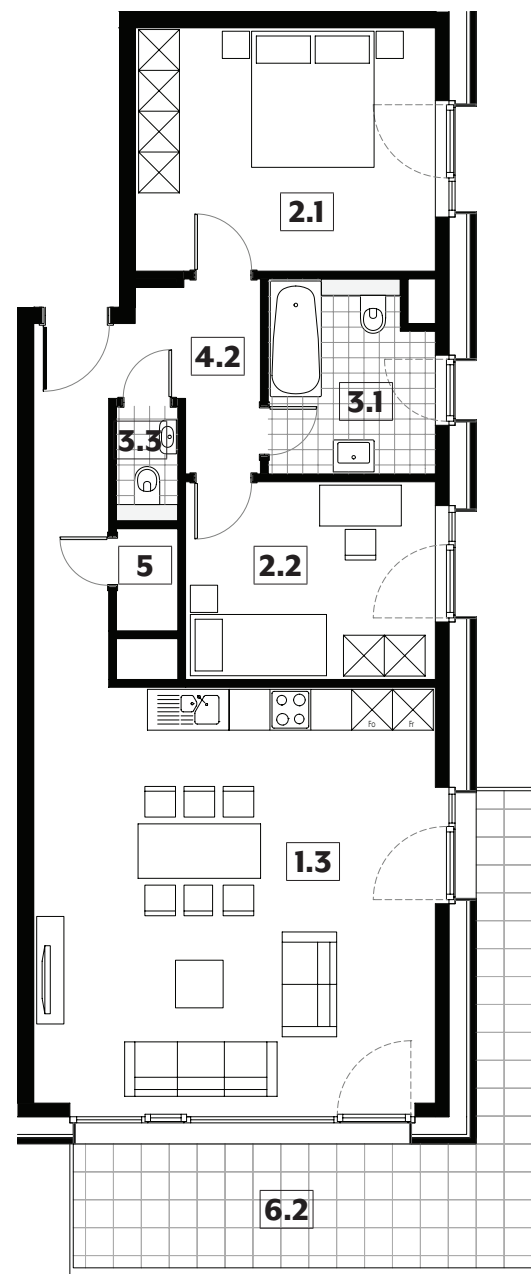
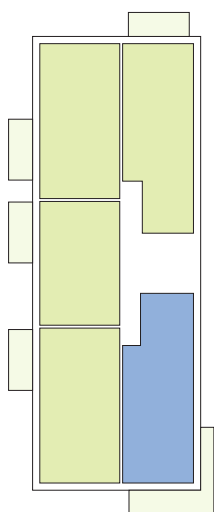
# 103



<b>1.3</b>	séjour/cuisine	<b>36,05m<sup>2</sup></b>
<b>2.1</b>	chambre	<b>15,75m<sup>2</sup></b>
<b>2.2</b>	chambre	<b>10,65m<sup>2</sup></b>
<b>3.1</b>	salle de bains	<b>6,65m<sup>2</sup></b>
<b>3.3</b>	w.c.	<b>1,50m<sup>2</sup></b>
<b>4.2</b>	couloir	<b>10,65m<sup>2</sup></b>
<b>5</b>	débarras	<b>1,35m<sup>2</sup></b>
<b>6.2</b>	balcon	<b>18,15m<sup>2</sup></b>

surface habitable

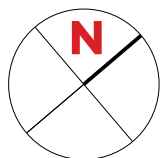
**82,60m<sup>2</sup>**





# APPARTEMENT TYPE

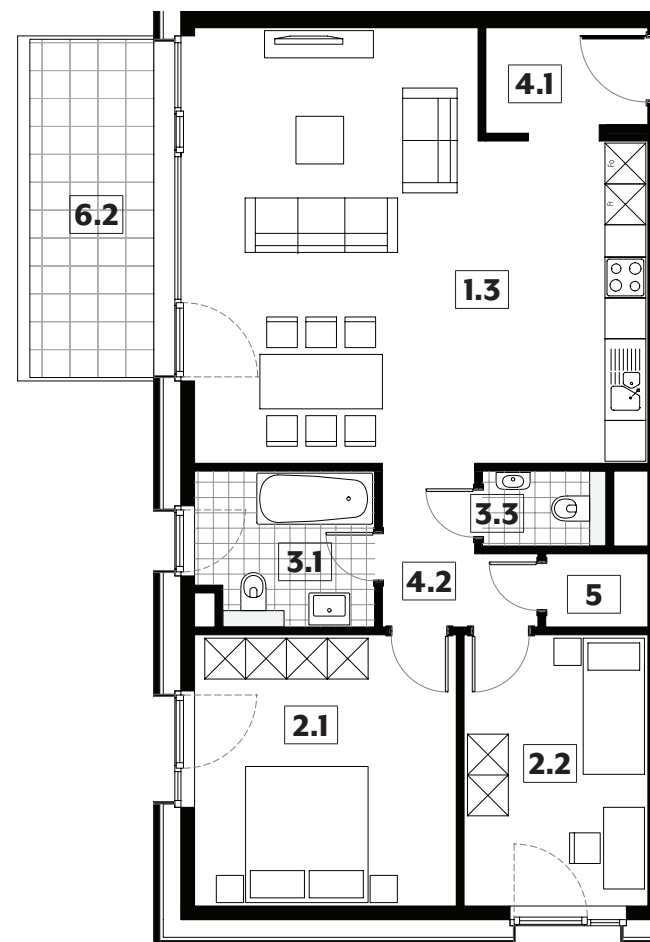
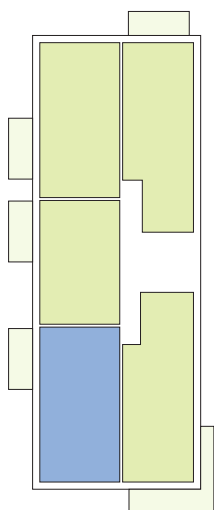
# 104



<b>1.3</b>	séjour/cuisine	<b>38,45m<sup>2</sup></b>
<b>2.1</b>	chambre	<b>15,30m<sup>2</sup></b>
<b>2.2</b>	chambre	<b>10,75m<sup>2</sup></b>
<b>3.1</b>	salle de bains	<b>5,80m<sup>2</sup></b>
<b>3.3</b>	w.c.	<b>2,00m<sup>2</sup></b>
<b>4.1</b>	hall	<b>3,70m<sup>2</sup></b>
<b>4.2</b>	couloir	<b>4,25m<sup>2</sup></b>
<b>5</b>	débarras	<b>1,60m<sup>2</sup></b>
<b>6.2</b>	balcon	<b>9,05m<sup>2</sup></b>

surface habitable

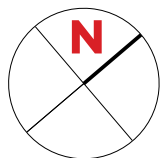
**81,85m<sup>2</sup>**





# APPARTEMENT TYPE

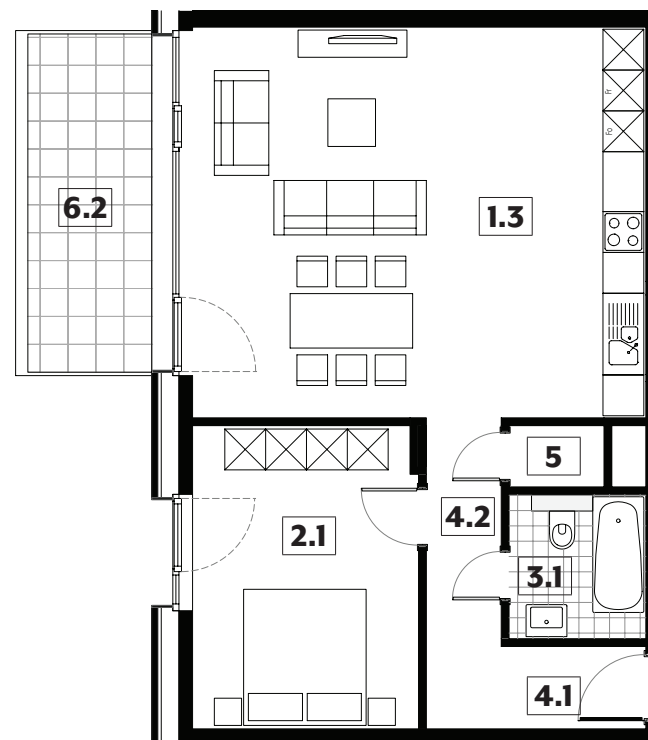
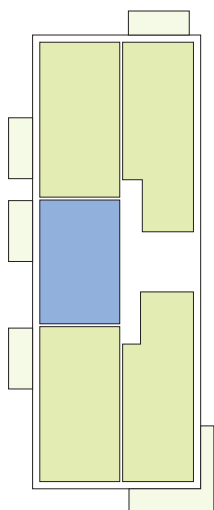
# 105



<b>1.3</b>	séjour/cuisine	<b>38,25m<sup>2</sup></b>
<b>2.1</b>	chambre	<b>14,70m<sup>2</sup></b>
<b>3.1</b>	salle de bains	<b>4,25m<sup>2</sup></b>
<b>4.1</b>	hall	<b>2,55m<sup>2</sup></b>
<b>4.2</b>	couloir	<b>5,05m<sup>2</sup></b>
<b>5</b>	débarras	<b>1,25m<sup>2</sup></b>
<b>6.2</b>	balcon	<b>9,05m<sup>2</sup></b>

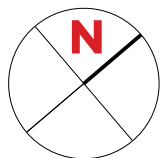
surface habitable

**66,05m<sup>2</sup>**



# APPARTEMENT TYPE

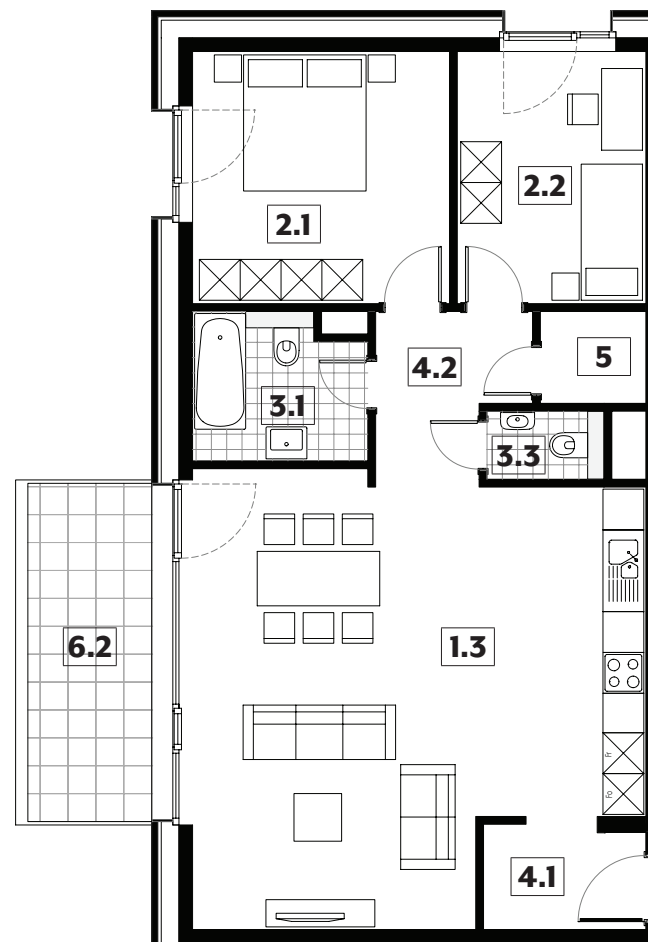
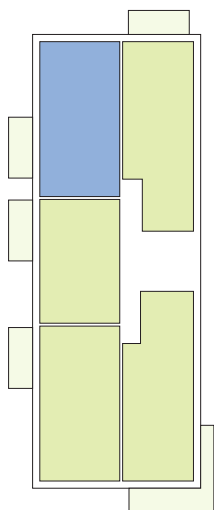
# 106



<b>1.3</b>	séjour/cuisine	<b>39,85m<sup>2</sup></b>
<b>2.1</b>	chambre	<b>14,00m<sup>2</sup></b>
<b>2.2</b>	chambre	<b>10,25m<sup>2</sup></b>
<b>3.1</b>	salle de bains	<b>5,30m<sup>2</sup></b>
<b>3.3</b>	w.c.	<b>1,70m<sup>2</sup></b>
<b>4.1</b>	hall	<b>3,75m<sup>2</sup></b>
<b>4.2</b>	couloir	<b>5,00m<sup>2</sup></b>
<b>5</b>	débarras	<b>2,10m<sup>2</sup></b>
<b>6.2</b>	balcon	<b>9,05m<sup>2</sup></b>

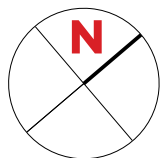
surface habitable

**81,95m<sup>2</sup>**



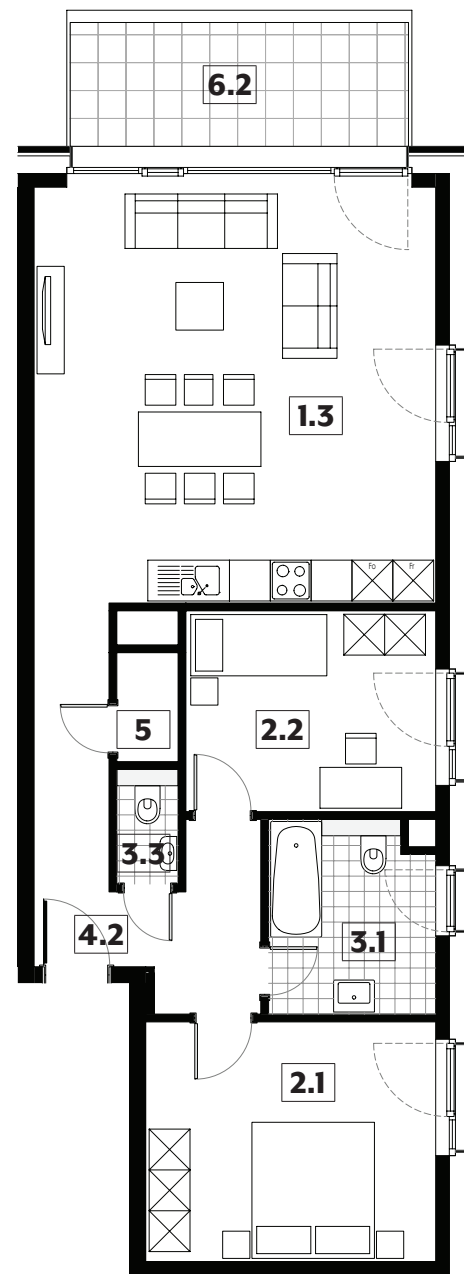
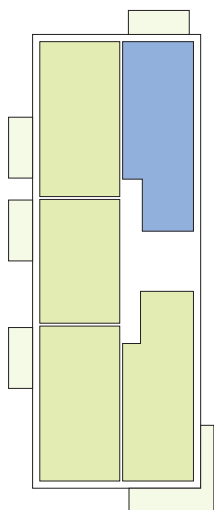
# APPARTEMENT TYPE

# 107

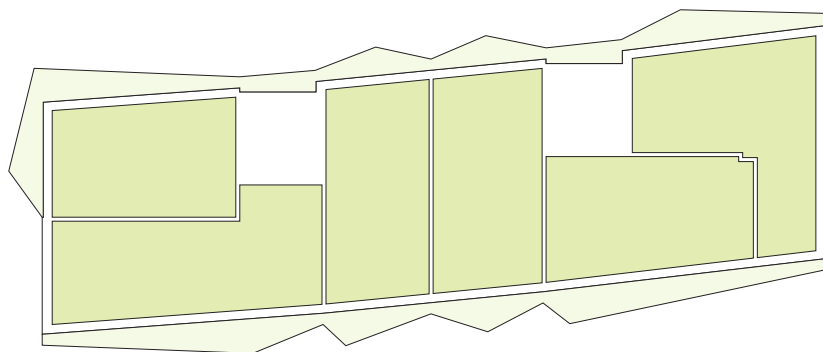


<b>1.3</b>	séjour/cuisine	<b>36,05m<sup>2</sup></b>
<b>2.1</b>	chambre	<b>15,00m<sup>2</sup></b>
<b>2.2</b>	chambre	<b>10,85m<sup>2</sup></b>
<b>3.1</b>	salle de bains	<b>6,75m<sup>2</sup></b>
<b>3.3</b>	w.c.	<b>1,50m<sup>2</sup></b>
<b>4.2</b>	couloir	<b>10,60m<sup>2</sup></b>
<b>5</b>	débarras	<b>1,45m<sup>2</sup></b>
<b>6.2</b>	balcon	<b>9,05m<sup>2</sup></b>

surface habitable
<b>82,20m<sup>2</sup></b>

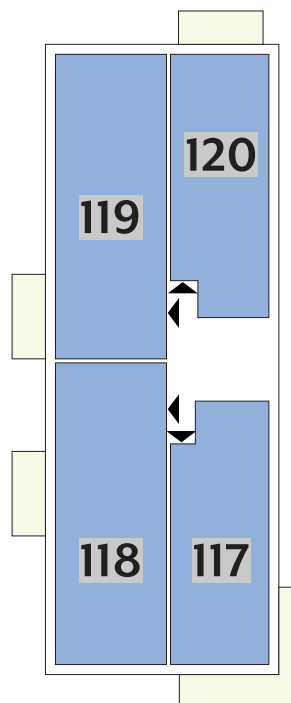


# APPARTEMENTS 2<sup>ÈME</sup> ÉTAGE



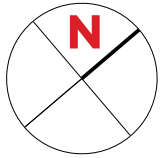
Type	Surface Utile	surface balcon	prix de vente subventionné TVA 3% *
117	88,94m <sup>2</sup>	18,15m <sup>2</sup>	308.318 €
118	118,84m <sup>2</sup>	9,05m <sup>2</sup>	408.759 €**
119	120,79m <sup>2</sup>	9,05m <sup>2</sup>	413.627 €** <sup>1</sup>
120	89,20m <sup>2</sup>	9,05m <sup>2</sup>	299.527 €

- les surfaces inscrites dans ce tableau peuvent subir de légères modifications dues aux nécessités techniques de la construction.
- surface utile = surface calculée à l'intérieur des murs extérieurs.
- \* primes ACE sont déjà déduites (uniquement pour les acquéreurs bénéficiant d'une prime de construction de l'État.)
- \*\* primes ACE et remboursement TVA sont déjà déduits.
- <sup>1</sup> logement subventionné sous conditions spécifiques.



# APPARTEMENT TYPE

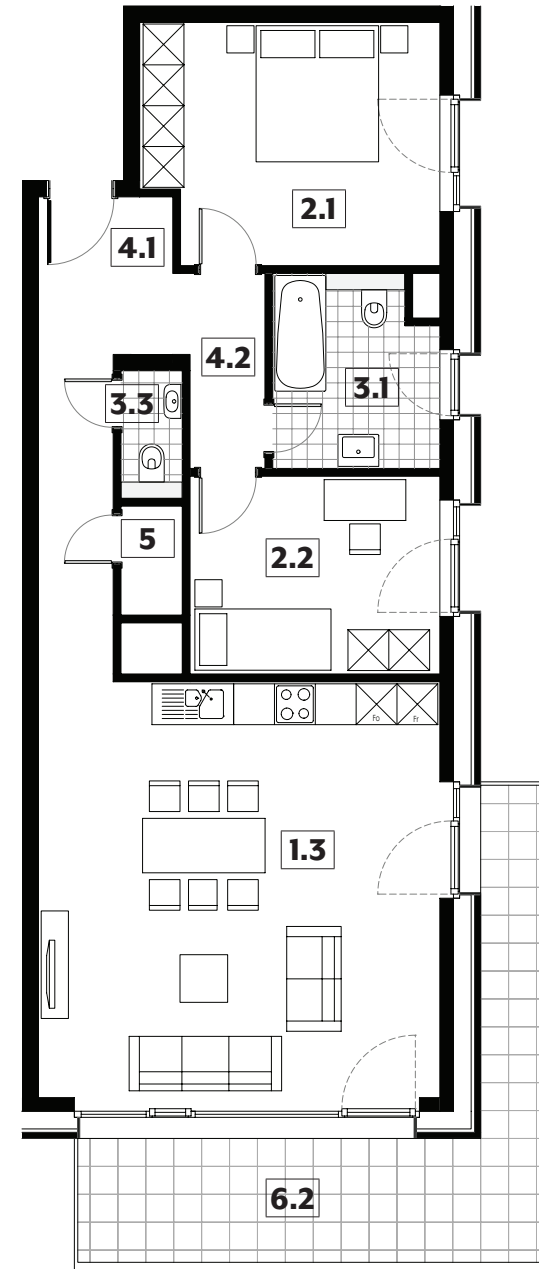
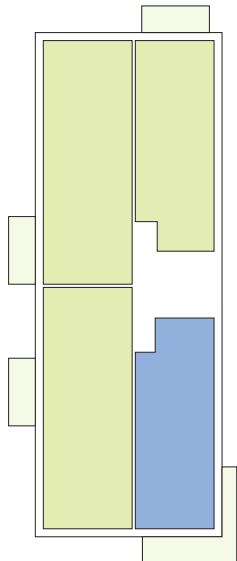
# 117



<b>1.3</b>	séjour/cuisine	<b>36,05m<sup>2</sup></b>
<b>2.1</b>	chambre	<b>15,10m<sup>2</sup></b>
<b>2.2</b>	chambre	<b>10,65m<sup>2</sup></b>
<b>3.1</b>	salle de bains	<b>6,65m<sup>2</sup></b>
<b>3.3</b>	w.c.	<b>1,70m<sup>2</sup></b>
<b>4.1</b>	hall	<b>2,20m<sup>2</sup></b>
<b>4.2</b>	couloir	<b>11,10m<sup>2</sup></b>
<b>5</b>	débarras	<b>1,45m<sup>2</sup></b>
<b>6.2</b>	balcon	<b>18,15m<sup>2</sup></b>

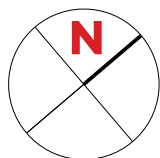
surface habitable

**84,90m<sup>2</sup>**



# APPARTEMENT TYPE

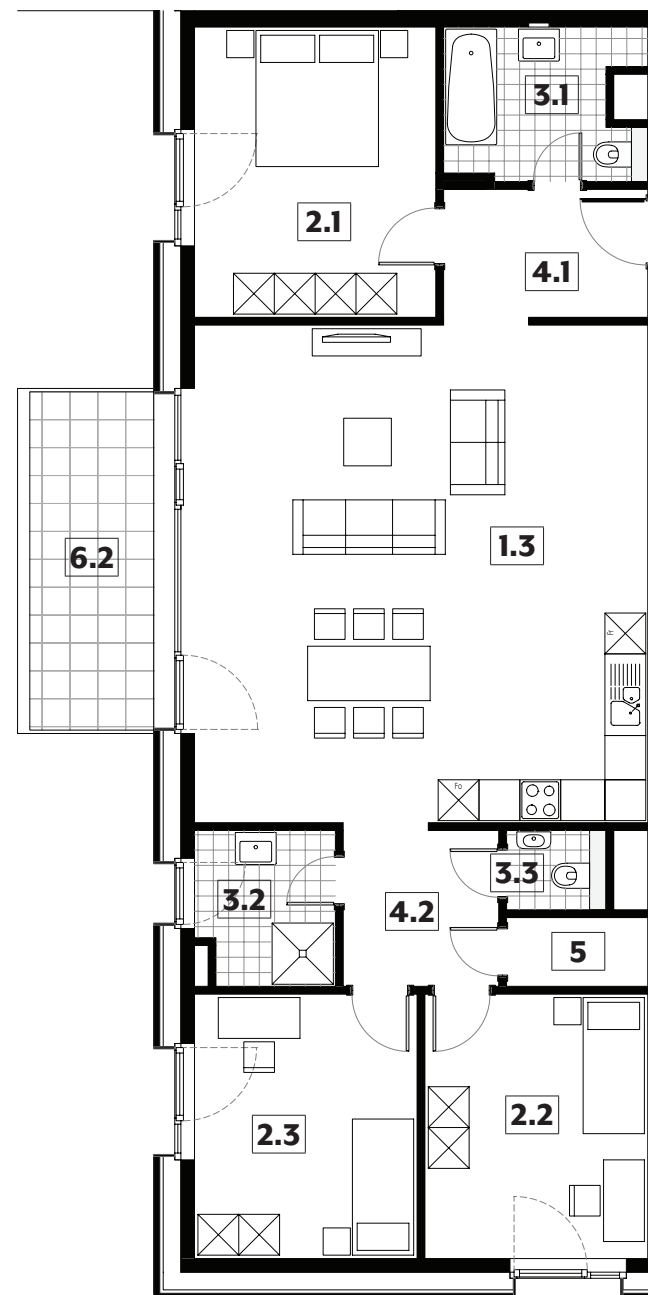
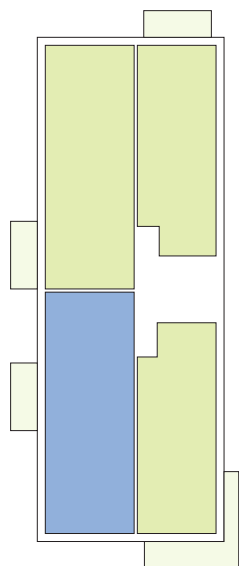
# 118



<b>1.3</b>	séjour/cuisine	<b>48,70m<sup>2</sup></b>
<b>2.1</b>	chambre	<b>15,10m<sup>2</sup></b>
<b>2.2</b>	chambre	<b>12,70m<sup>2</sup></b>
<b>2.3</b>	chambre	<b>12,70m<sup>2</sup></b>
<b>3.1</b>	salle de bains	<b>6,15m<sup>2</sup></b>
<b>3.2</b>	salle de douche	<b>4,50m<sup>2</sup></b>
<b>3.3</b>	w.c.	<b>1,70m<sup>2</sup></b>
<b>4.1</b>	hall	<b>5,80m<sup>2</sup></b>
<b>4.2</b>	couloir	<b>5,40m<sup>2</sup></b>
<b>5</b>	débarras	<b>2,10m<sup>2</sup></b>
<b>6.2</b>	balcon	<b>9,05m<sup>2</sup></b>

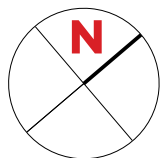
surface habitable

**114,85m<sup>2</sup>**



# APPARTEMENT TYPE

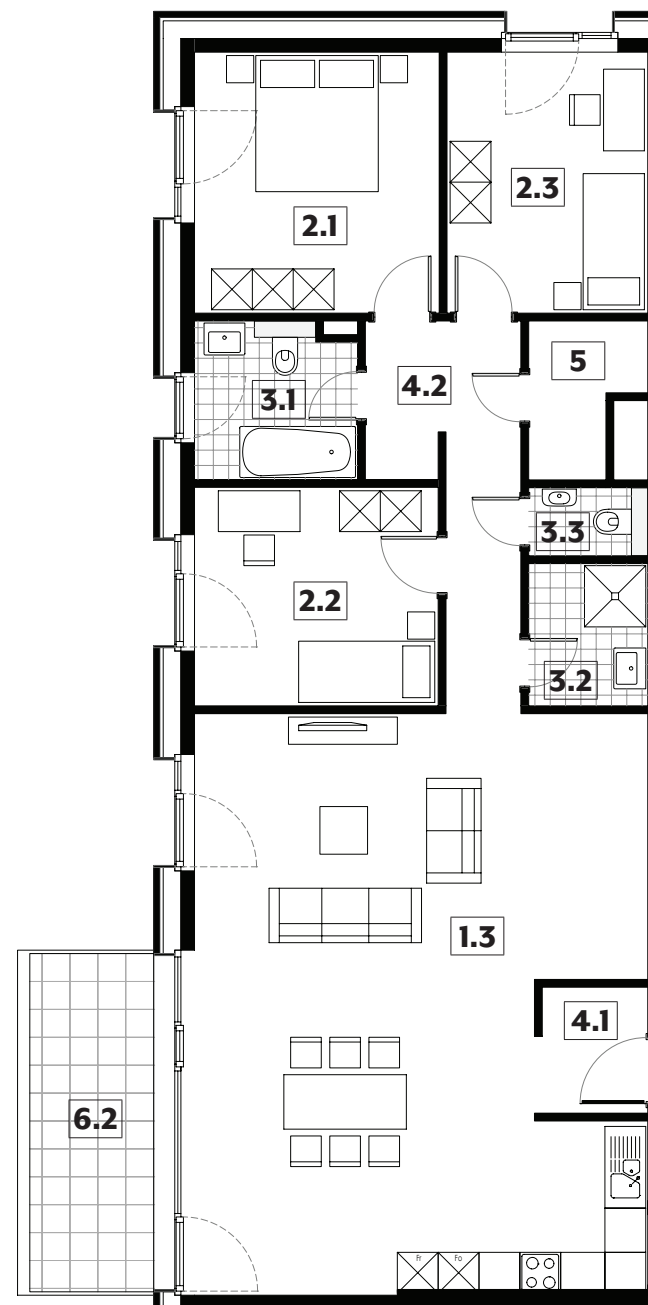
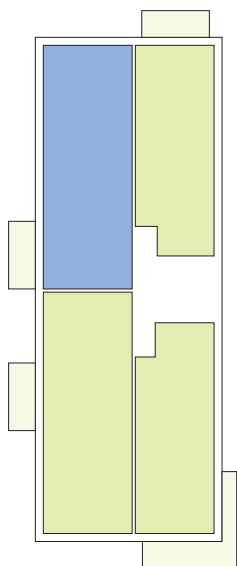
# 119



<b>1.3</b>	séjour/cuisine	<b>53,15m<sup>2</sup></b>
<b>2.1</b>	chambre	<b>13,80m<sup>2</sup></b>
<b>2.2</b>	chambre	<b>11,50m<sup>2</sup></b>
<b>2.3</b>	chambre	<b>11,30m<sup>2</sup></b>
<b>3.1</b>	salle de bains	<b>5,40m<sup>2</sup></b>
<b>3.2</b>	salle de douche	<b>3,65m<sup>2</sup></b>
<b>3.3</b>	w.c.	<b>1,75m<sup>2</sup></b>
<b>4.1</b>	hall	<b>3,00m<sup>2</sup></b>
<b>4.2</b>	couloir	<b>9,05m<sup>2</sup></b>
<b>5</b>	débarras	<b>3,30m<sup>2</sup></b>
<b>6.2</b>	balcon	<b>9,05m<sup>2</sup></b>

surface habitable

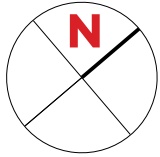
## 115,90m<sup>2</sup>





# APPARTEMENT TYPE

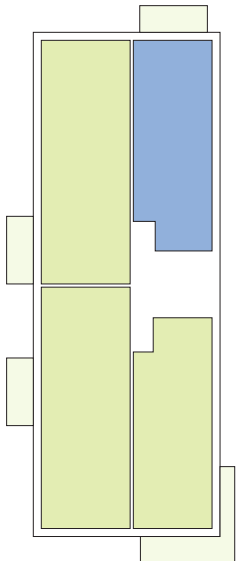
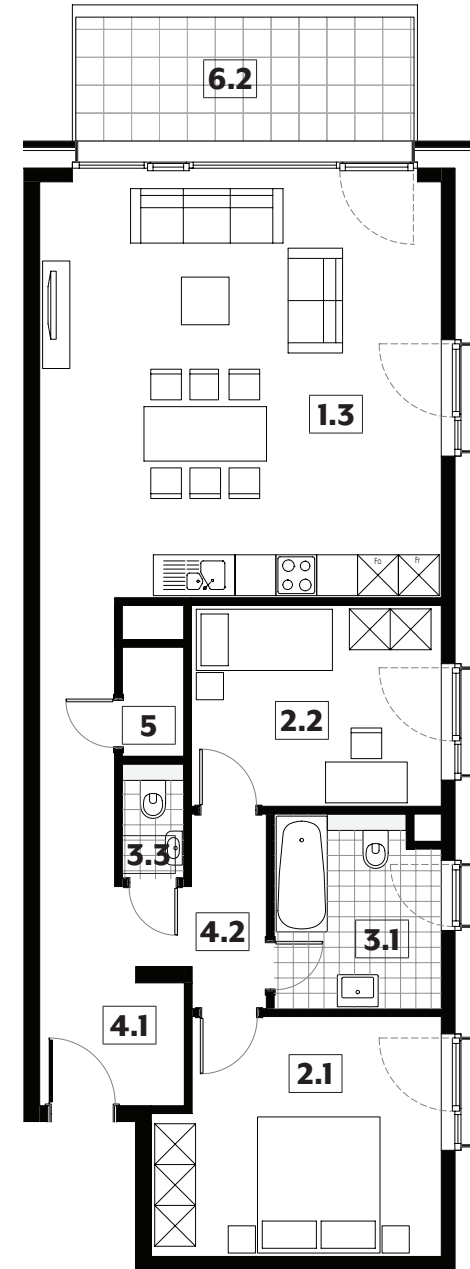
# 120



<b>1.3</b>	séjour/cuisine	<b>36,05m<sup>2</sup></b>
<b>2.1</b>	chambre	<b>14,15m<sup>2</sup></b>
<b>2.2</b>	chambre	<b>10,85m<sup>2</sup></b>
<b>3.1</b>	salle de bains	<b>6,75m<sup>2</sup></b>
<b>3.3</b>	w.c.	<b>1,50m<sup>2</sup></b>
<b>4.1</b>	hall	<b>3,85m<sup>2</sup></b>
<b>4.2</b>	couloir	<b>10,75m<sup>2</sup></b>
<b>5</b>	débarras	<b>1,45m<sup>2</sup></b>
<b>6.2</b>	balcon	<b>9,05m<sup>2</sup></b>

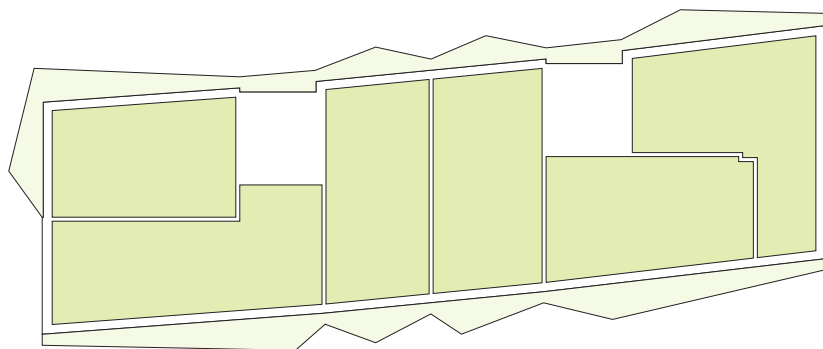
surface habitable

**85,35m<sup>2</sup>**



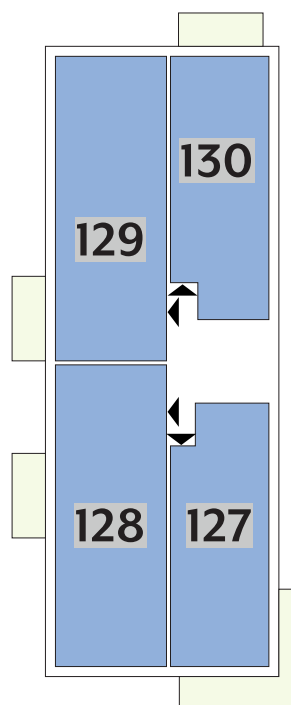
# APPARTEMENTS

## 3<sup>ÈME</sup> ÉTAGE



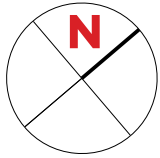
Type	Surface Utile	surface balcon	prix de vente subventionné TVA 3% *
<b>127</b>	88,94m <sup>2</sup>	18,15m <sup>2</sup>	<b>313.259 €</b>
<b>128</b>	118,72m <sup>2</sup>	9,05m <sup>2</sup>	<b>416.649 €**</b>
<b>129</b>	120,63m <sup>2</sup>	9,05m <sup>2</sup>	<b>421.567 €**<sup>1</sup></b>
<b>130</b>	89,20m <sup>2</sup>	9,05m <sup>2</sup>	<b>305.030 €</b>

- les surfaces inscrites dans ce tableau peuvent subir de légères modifications dues aux nécessités techniques de la construction.
- surface utile = surface calculée à l'intérieur des murs extérieurs.
- \* primes ACE sont déjà déduites (uniquement pour les acquéreurs bénéficiant d'une prime de construction de l'État.)
- \*\* primes ACE et remboursement TVA sont déjà déduits.
- <sup>1</sup> logement subventionné sous conditions spécifiques.



# APPARTEMENT TYPE

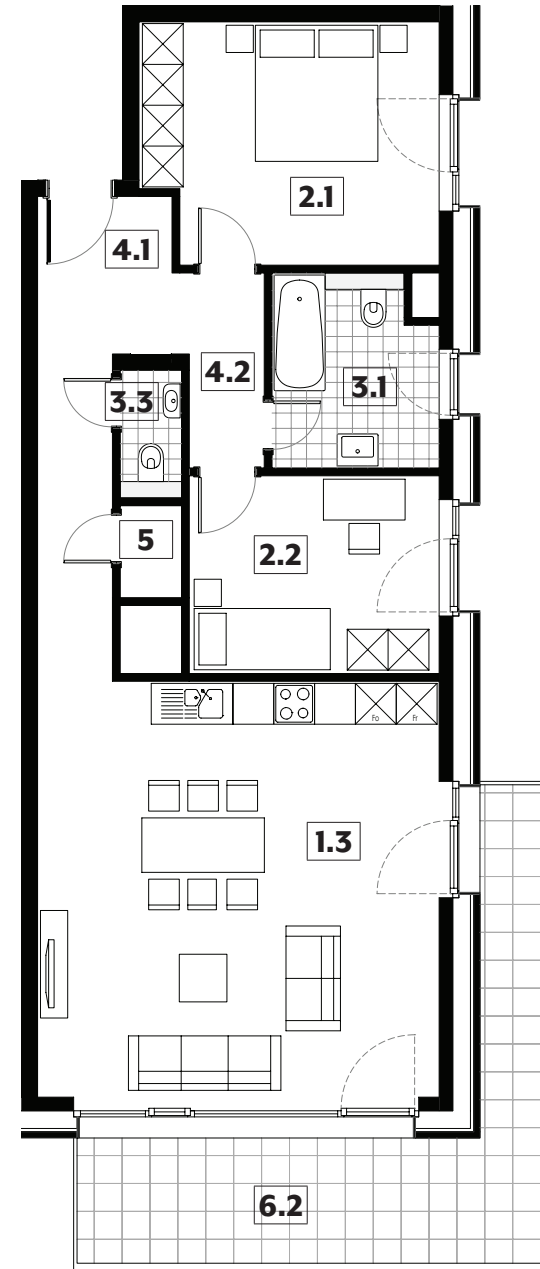
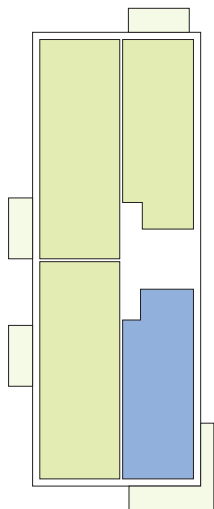
# 127



<b>1.3</b>	séjour/cuisine	<b>36,05m<sup>2</sup></b>
<b>2.1</b>	chambre	<b>15,10m<sup>2</sup></b>
<b>2.2</b>	chambre	<b>10,65m<sup>2</sup></b>
<b>3.1</b>	salle de bains	<b>6,65m<sup>2</sup></b>
<b>3.3</b>	w.c.	<b>1,70m<sup>2</sup></b>
<b>4.1</b>	hall	<b>2,20m<sup>2</sup></b>
<b>4.2</b>	couloir	<b>11,10m<sup>2</sup></b>
<b>5</b>	débarras	<b>1,20m<sup>2</sup></b>
<b>6.2</b>	balcon	<b>18,15m<sup>2</sup></b>

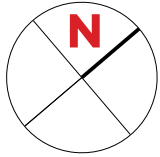
surface habitable

**84,65m<sup>2</sup>**



# APPARTEMENT TYPE

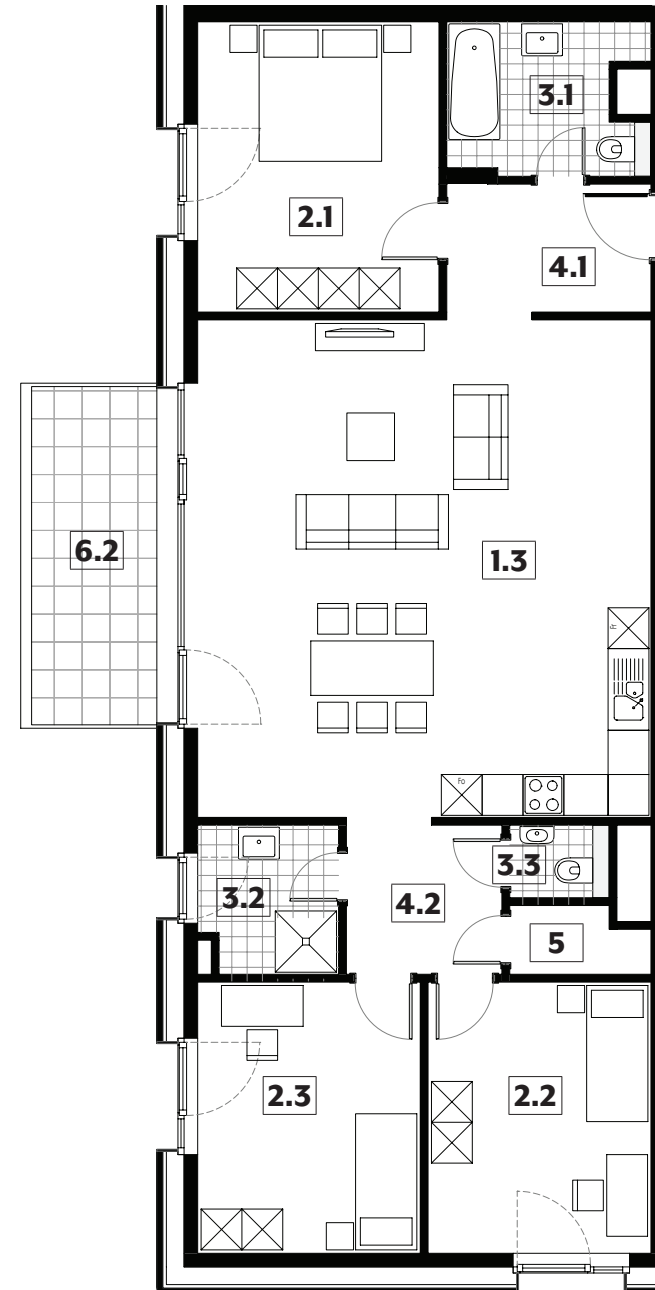
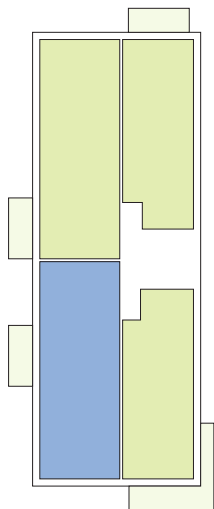
# 128



<b>1.3</b>	séjour/cuisine	<b>48,70m<sup>2</sup></b>
<b>2.1</b>	chambre	<b>15,10m<sup>2</sup></b>
<b>2.2</b>	chambre	<b>13,05m<sup>2</sup></b>
<b>2.3</b>	chambre	<b>13,05m<sup>2</sup></b>
<b>3.1</b>	salle de bains	<b>6,15m<sup>2</sup></b>
<b>3.2</b>	salle de douche	<b>4,35m<sup>2</sup></b>
<b>3.3</b>	w.c.	<b>1,55m<sup>2</sup></b>
<b>4.1</b>	hall	<b>5,80m<sup>2</sup></b>
<b>4.2</b>	couloir	<b>5,15m<sup>2</sup></b>
<b>5</b>	débarras	<b>1,90m<sup>2</sup></b>
<b>6.2</b>	balcon	<b>9,05m<sup>2</sup></b>

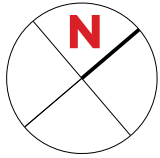
surface habitable

**114,80m<sup>2</sup>**



# APPARTEMENT TYPE

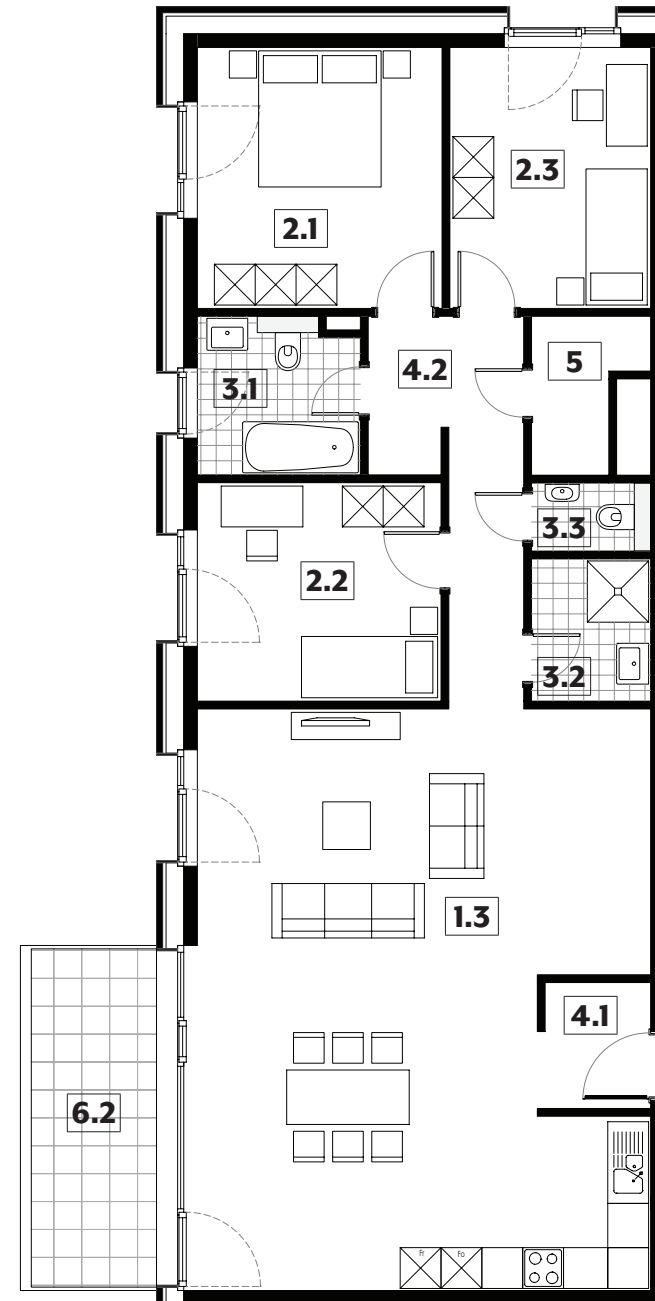
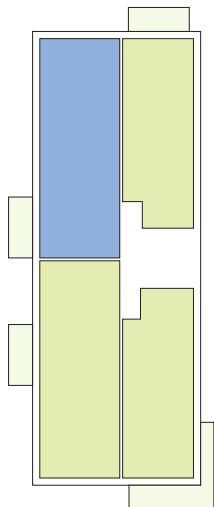
# 129



<b>1.3</b>	séjour/cuisine	<b>53,45m<sup>2</sup></b>
<b>2.1</b>	chambre	<b>13,80m<sup>2</sup></b>
<b>2.2</b>	chambre	<b>11,50m<sup>2</sup></b>
<b>2.3</b>	chambre	<b>11,30m<sup>2</sup></b>
<b>3.1</b>	salle de bains	<b>5,40m<sup>2</sup></b>
<b>3.2</b>	salle de douche	<b>3,65m<sup>2</sup></b>
<b>3.3</b>	w.c.	<b>1,75m<sup>2</sup></b>
<b>4.1</b>	hall	<b>3,00m<sup>2</sup></b>
<b>4.2</b>	couloir	<b>9,05m<sup>2</sup></b>
<b>5</b>	débarras	<b>3,15m<sup>2</sup></b>
<b>6.2</b>	balcon	<b>9,05m<sup>2</sup></b>

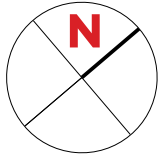
surface habitable

**116,05m<sup>2</sup>**



# APPARTEMENT TYPE

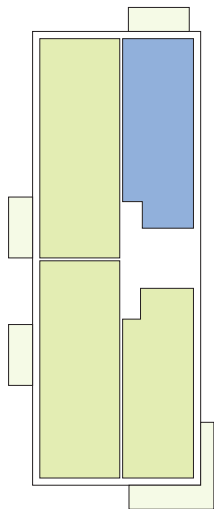
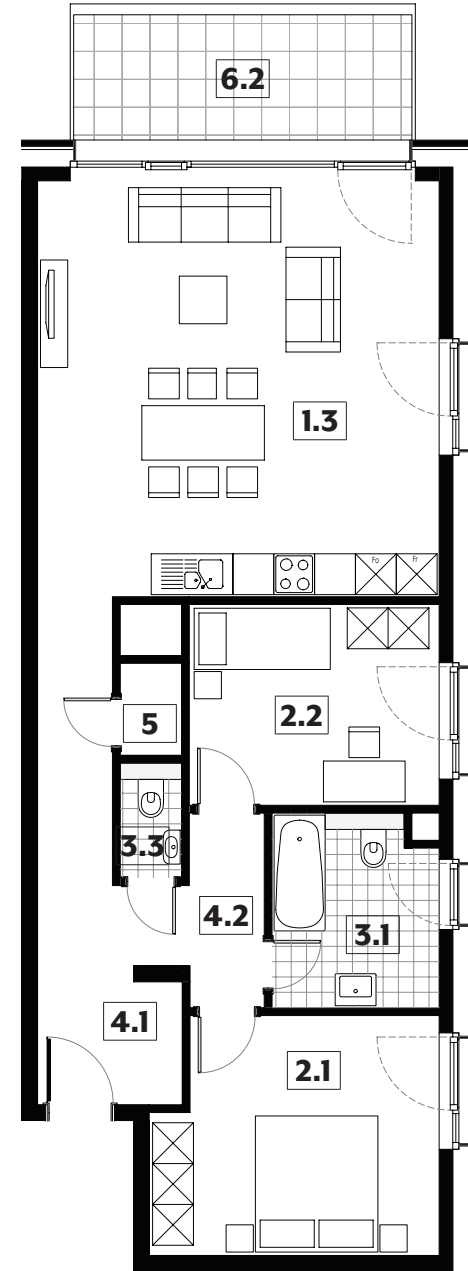
# 130



<b>1.3</b>	séjour/cuisine	<b>36,05m<sup>2</sup></b>
<b>2.1</b>	chambre	<b>14,15m<sup>2</sup></b>
<b>2.2</b>	chambre	<b>10,85m<sup>2</sup></b>
<b>3.1</b>	salle de bains	<b>6,75m<sup>2</sup></b>
<b>3.3</b>	w.c.	<b>1,50m<sup>2</sup></b>
<b>4.1</b>	hall	<b>3,85m<sup>2</sup></b>
<b>4.2</b>	couloir	<b>10,75m<sup>2</sup></b>
<b>5</b>	débarras	<b>1,20m<sup>2</sup></b>
<b>6.2</b>	balcon	<b>9,05m<sup>2</sup></b>

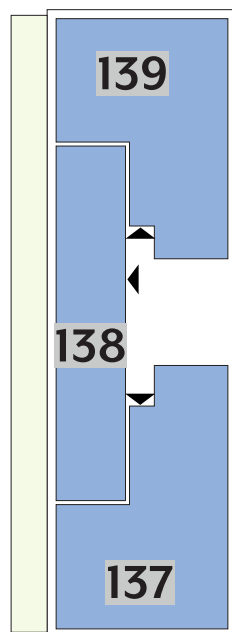
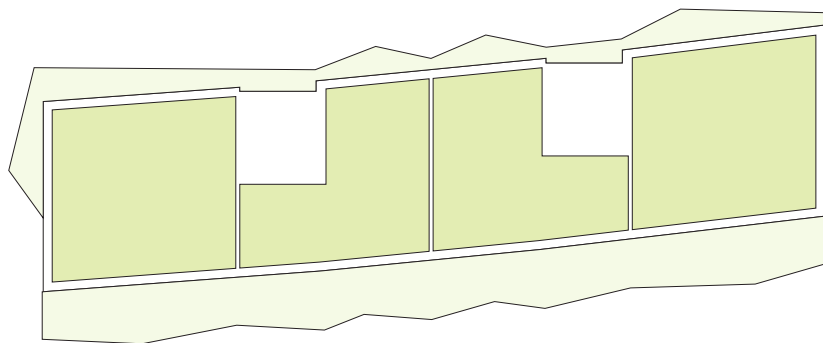
surface habitable

**85,10m<sup>2</sup>**



# APPARTEMENTS

## 4<sup>ÈME</sup> ÉTAGE



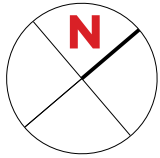
Type	Surface Utile	surface terrasse	prix de vente subventionné TVA 3% *
<b>137</b>	122,16m <sup>2</sup>	15,20m <sup>2</sup>	<b>439.130 €**<sup>1</sup></b>
<b>138</b>	88,46m <sup>2</sup>	42,90m <sup>2</sup>	<b>333.790 €</b>
<b>139</b>	114,36m <sup>2</sup>	15,05m <sup>2</sup>	<b>418.585 €**</b>

- les surfaces inscrites dans ce tableau peuvent subir de légères modifications dues aux nécessités techniques de la construction.
- surface utile = surface calculée à l'intérieur des murs extérieurs.
- \* primes ACE sont déjà déduites (uniquement pour les acquéreurs bénéficiant d'une prime de construction de l'État.)
- \*\* primes ACE et remboursement TVA sont déjà déduits.
- <sup>1</sup> logement subventionné sous conditions spécifiques.



# APPARTEMENT TYPE

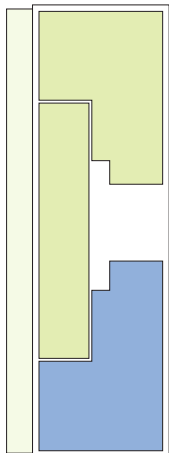
# 137



<b>1.3</b>	séjour/cuisine	<b>37,35m<sup>2</sup></b>
<b>2.1</b>	chambre	<b>16,00m<sup>2</sup></b>
<b>2.2</b>	chambre	<b>14,95m<sup>2</sup></b>
<b>2.3</b>	chambre	<b>13,20m<sup>2</sup></b>
<b>3.1</b>	salle de bains	<b>6,05m<sup>2</sup></b>
<b>3.2</b>	salle de douche	<b>4,55m<sup>2</sup></b>
<b>3.3</b>	w.c.	<b>2,20m<sup>2</sup></b>
<b>4.1</b>	hall	<b>3,00m<sup>2</sup></b>
<b>4.2</b>	couloir	<b>15,35m<sup>2</sup></b>
<b>5</b>	débarras	<b>2,00m<sup>2</sup></b>
<b>6.1</b>	terrasse	<b>15,20m<sup>2</sup></b>

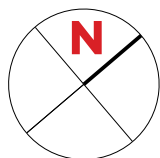
surface habitable

**114,65m<sup>2</sup>**



# APPARTEMENT TYPE

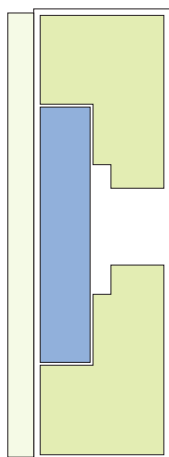
# 138



<b>1.3</b>	séjour/cuisine	<b>37,15m<sup>2</sup></b>
<b>2.1</b>	chambre	<b>14,35m<sup>2</sup></b>
<b>2.2</b>	chambre	<b>10,50m<sup>2</sup></b>
<b>3.1</b>	salle de bains	<b>6,45m<sup>2</sup></b>
<b>3.3</b>	w.c.	<b>2,15m<sup>2</sup></b>
<b>4.1</b>	hall	<b>6,15m<sup>2</sup></b>
<b>4.2</b>	couloir	<b>5,60m<sup>2</sup></b>
<b>5</b>	débarras	<b>2,25m<sup>2</sup></b>
<b>6.1</b>	terrasse	<b>42,90m<sup>2</sup></b>

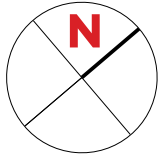
surface habitable

**84,60m<sup>2</sup>**



# APPARTEMENT TYPE

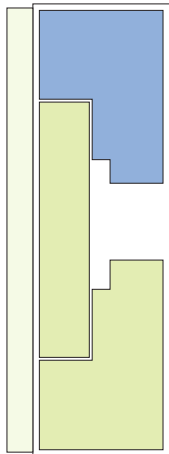
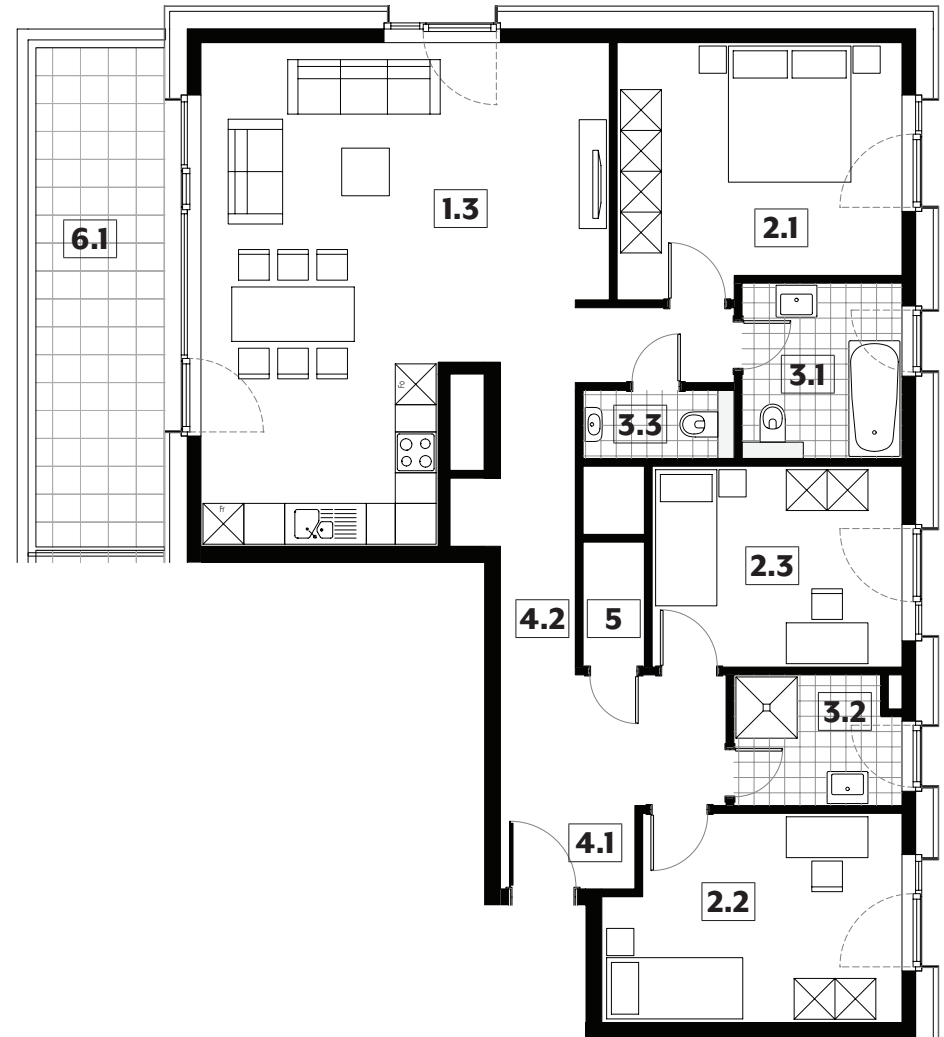
# 139

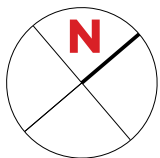


<b>1.3</b>	séjour/cuisine	<b>37,15m<sup>2</sup></b>
<b>2.1</b>	chambre	<b>14,95m<sup>2</sup></b>
<b>2.2</b>	chambre	<b>12,85m<sup>2</sup></b>
<b>2.3</b>	chambre	<b>10,85m<sup>2</sup></b>
<b>3.1</b>	salle de bains	<b>6,05m<sup>2</sup></b>
<b>3.2</b>	salle de douche	<b>4,55m<sup>2</sup></b>
<b>3.3</b>	w.c.	<b>2,20m<sup>2</sup></b>
<b>4.1</b>	hall	<b>2,40m<sup>2</sup></b>
<b>4.2</b>	couloir	<b>14,75m<sup>2</sup></b>
<b>5</b>	débarras	<b>1,65m<sup>2</sup></b>
<b>6.1</b>	terrasse	<b>15,05m<sup>2</sup></b>

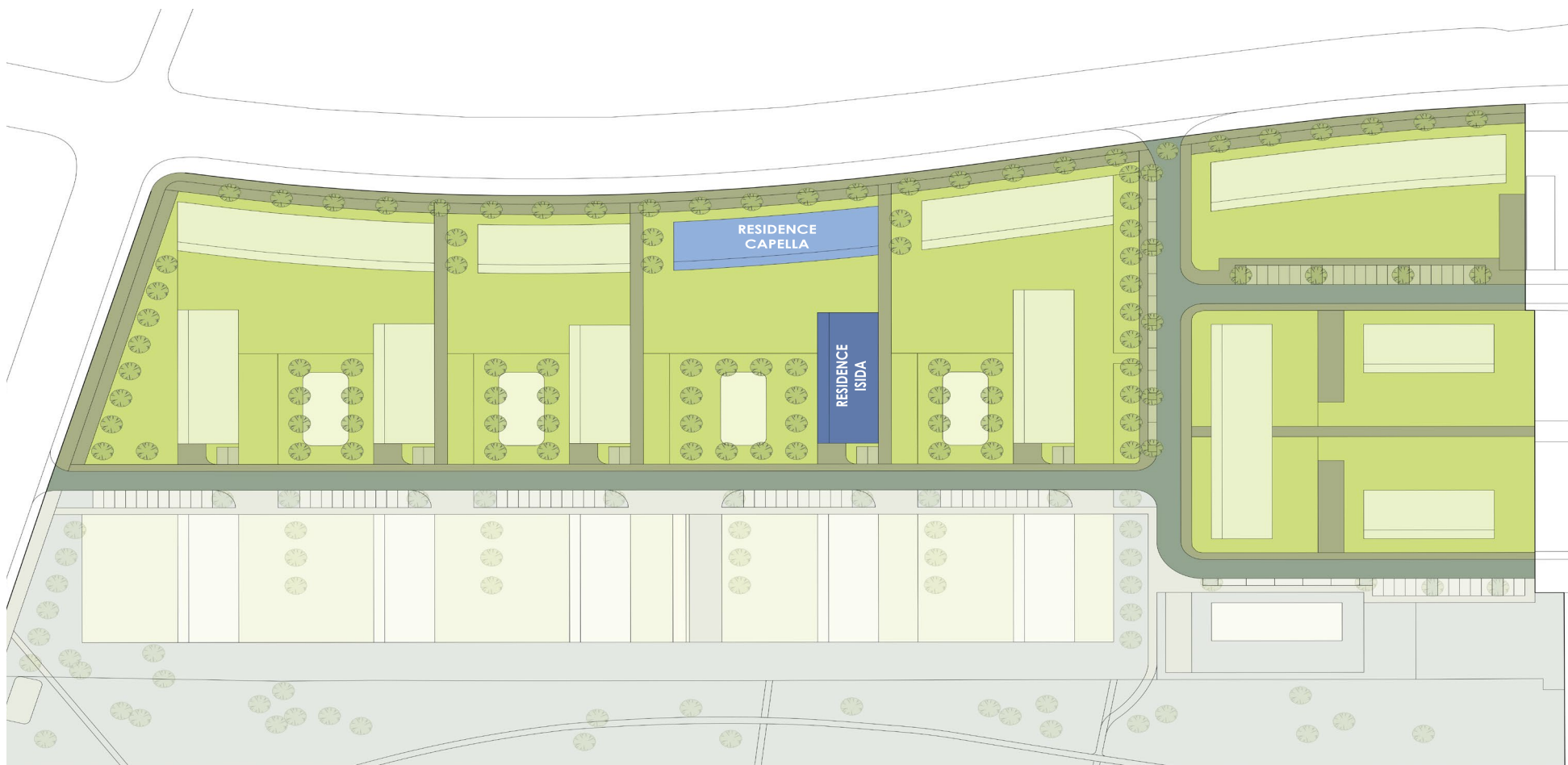
surface habitable

**107,40m<sup>2</sup>**





# IMPLANTATION





© STDM image non contractuelle





© STDM image non contractuelle

# SNHBM

Société Nationale des  
Habitations à Bon Marché

2b, rue Kalchesbruck  
L-1852 Luxembourg

Carmen Sousa  
Tél. (+352) 448292 - 557  
carmen.sousa@snhbm.lu

[snhbm.lu](http://snhbm.lu)