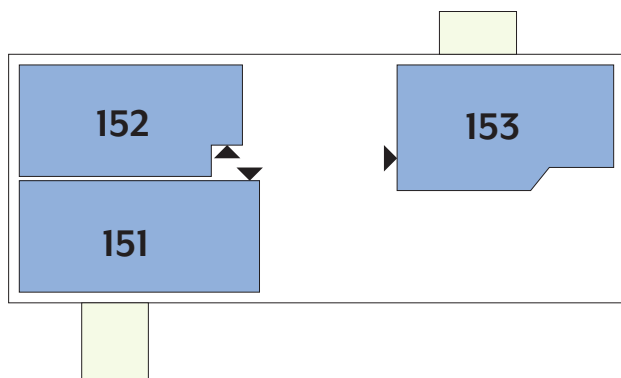


# Résidence LEONIS



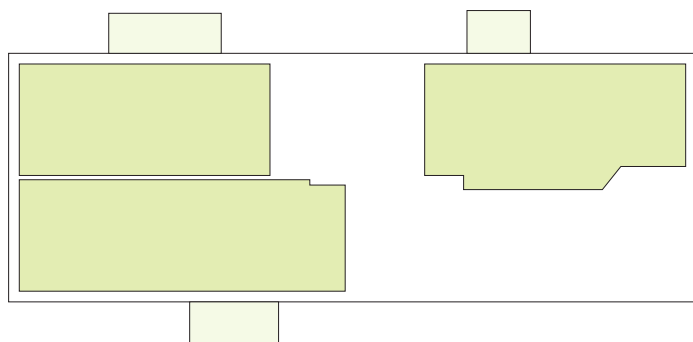
## APPARTEMENTS

# REZ-DE-CHAUSSÉE



Type	Surface Utile	surface terrasse	surface cave	prix de vente subventionné TVA 3% *
151	83,78m <sup>2</sup>	15,75m <sup>2</sup>	5,66m <sup>2</sup>	<b>283.447 €</b>
152	74,95m <sup>2</sup>		5,53m <sup>2</sup>	<b>244.271 €</b>
153	79,48m <sup>2</sup>	9,55m <sup>2</sup>	5,81m <sup>2</sup>	<b>260.224 €</b>

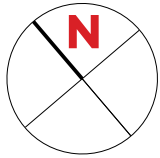
- les surfaces inscrites dans ce tableau peuvent subir de légères modifications dues aux nécessités techniques de la construction.
- surface utile = surface calculée à l'intérieur des murs extérieurs.
- \* primes ACE sont déjà déduites (uniquement pour les acquéreurs bénéficiant d'une prime de construction de l'Etat.)
- \*\* primes ACE et remboursement TVA sont déjà déduits.





# APPARTEMENT TYPE

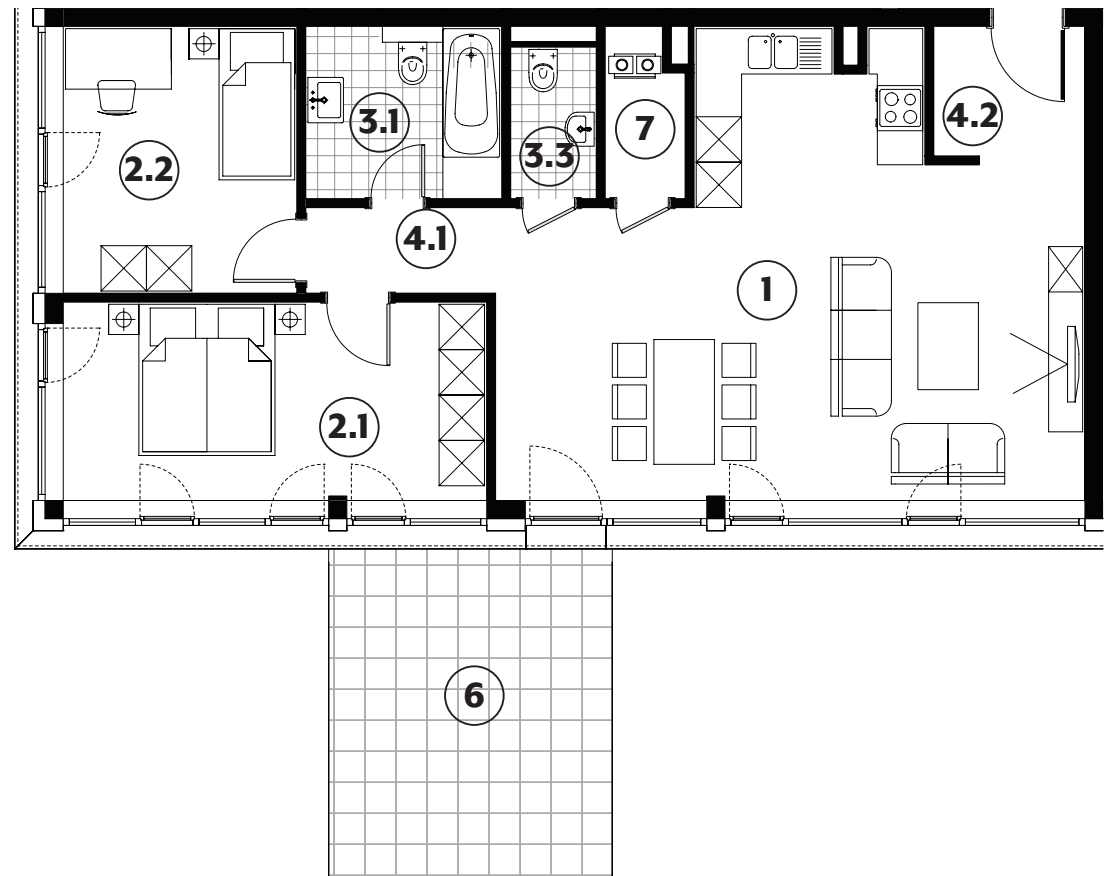
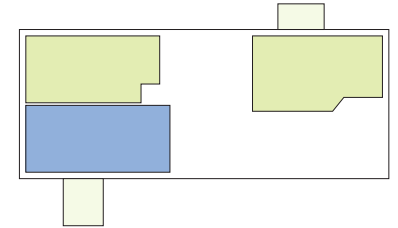
# 151



<b>1</b>	séjour/cuisine	<b>38,45m<sup>2</sup></b>
<b>2.1</b>	chambre	<b>14,70m<sup>2</sup></b>
<b>2.2</b>	chambre	<b>10,90m<sup>2</sup></b>
<b>3.1</b>	salle de bains	<b>5,90m<sup>2</sup></b>
<b>3.3</b>	wc	<b>2,30m<sup>2</sup></b>
<b>4.1</b>	couloir	<b>2,85m<sup>2</sup></b>
<b>4.2</b>	hall	<b>3,60m<sup>2</sup></b>
<b>6</b>	terrasse	<b>15,75m<sup>2</sup></b>
<b>7</b>	technique	<b>2,25m<sup>2</sup></b>

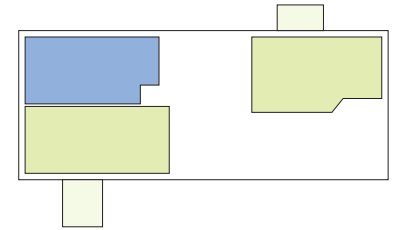
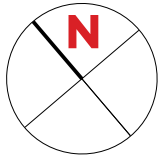
surface habitable

**80,95m<sup>2</sup>**



# APPARTEMENT TYPE

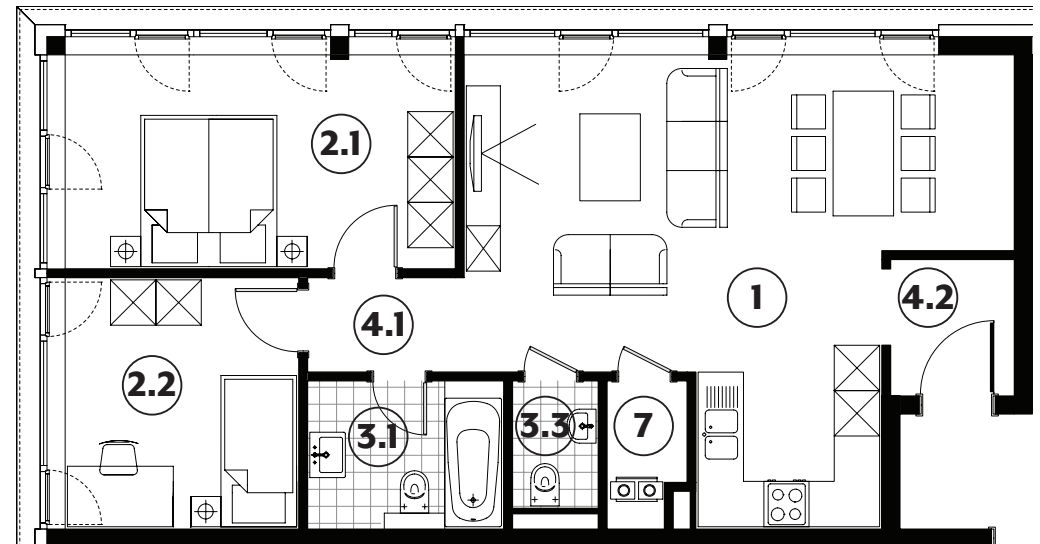
# 152



<b>1</b>	séjour/cuisine	<b>32,80m<sup>2</sup></b>
<b>2.1</b>	chambre	<b>14,60m<sup>2</sup></b>
<b>2.2</b>	chambre	<b>10,25m<sup>2</sup></b>
<b>3.1</b>	salle de bains	<b>5,10m<sup>2</sup></b>
<b>3.3</b>	wc	<b>1,90m<sup>2</sup></b>
<b>4.1</b>	couloir	<b>2,60m<sup>2</sup></b>
<b>4.2</b>	hall	<b>3,05m<sup>2</sup></b>
<b>7</b>	technique	<b>1,90m<sup>2</sup></b>

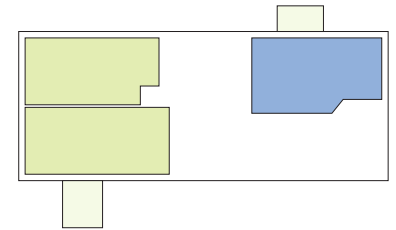
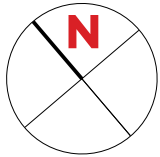
surface habitable

**72,20m<sup>2</sup>**



# APPARTEMENT TYPE

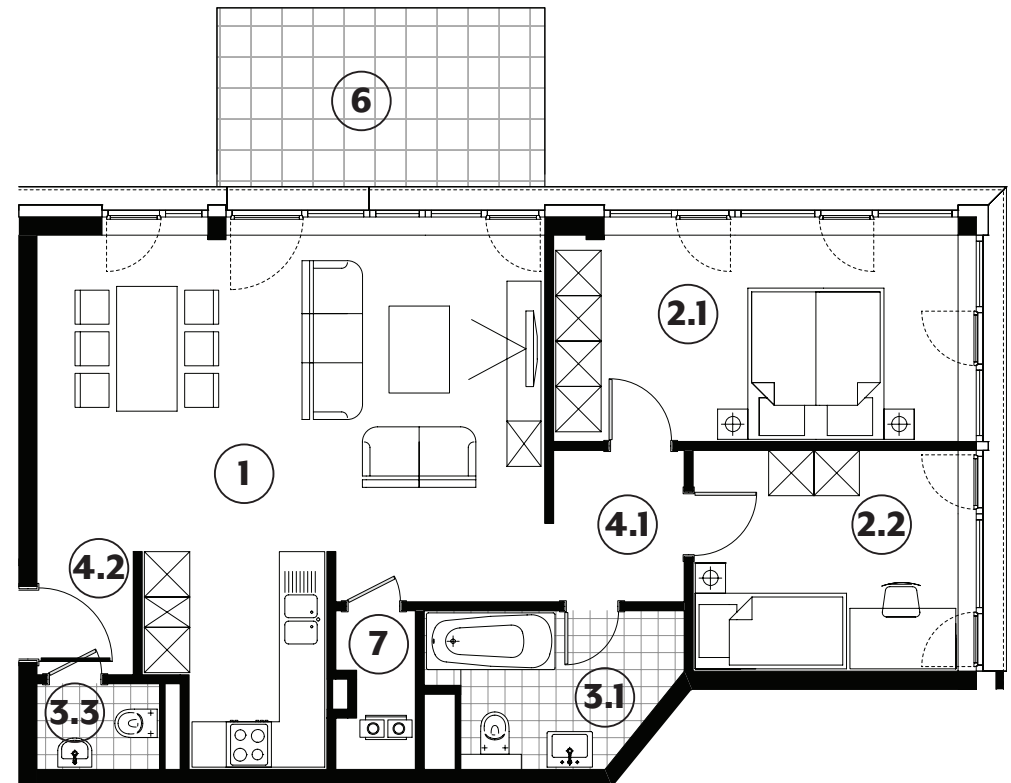
# 153



<b>1</b>	séjour/cuisine	<b>36,20m<sup>2</sup></b>
<b>2.1</b>	chambre	<b>14,60m<sup>2</sup></b>
<b>2.2</b>	chambre	<b>10,25m<sup>2</sup></b>
<b>3.1</b>	salle de bains	<b>6,00m<sup>2</sup></b>
<b>3.3</b>	wc	<b>1,85m<sup>2</sup></b>
<b>4.1</b>	couloir	<b>3,60m<sup>2</sup></b>
<b>4.2</b>	hall	<b>2,10m<sup>2</sup></b>
<b>6</b>	terrasse	<b>9,55m<sup>2</sup></b>
<b>7</b>	technique	<b>2,05m<sup>2</sup></b>

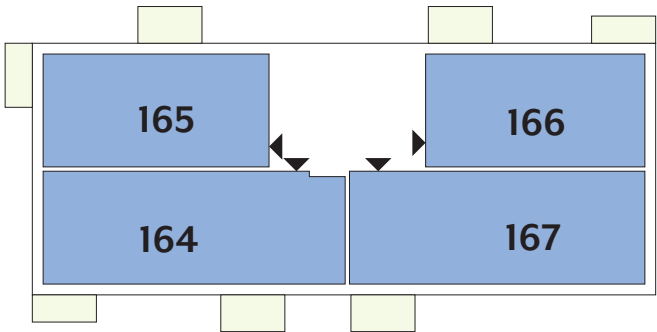
surface habitable

**76,65m<sup>2</sup>**



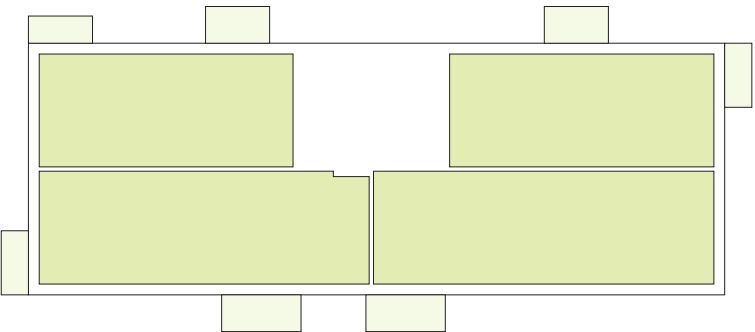
APPARTEMENTS

1 ETAGE



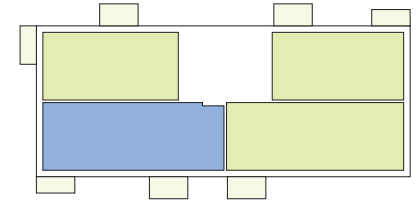
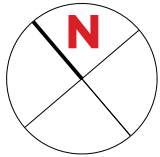
Type	Surface Utile	surface terrasse	surface cave	prix de vente subventionné TVA 3% *
164	103,15m <sup>2</sup>	10,75m <sup>2</sup>	8,19m <sup>2</sup>	357.279 €**
165	77,49m <sup>2</sup>	10,75m <sup>2</sup>	5,78m <sup>2</sup>	266.466 €
166	75,41m <sup>2</sup>	10,75m <sup>2</sup>	5,57m <sup>2</sup>	262.016 €
167	101,43m <sup>2</sup>	6,25m <sup>2</sup>	5,98m <sup>2</sup>	347.654 €**

- les surfaces inscrites dans ce tableau peuvent subir de légères modifications dues aux nécessités techniques de la construction.
- surface utile = surface calculée à l'intérieur des murs extérieurs.
- \* primes ACE sont déjà déduites ( uniquement pour les acquéreurs bénéficiant d'une prime de construction de l'État. )
- \*\* primes ACE et remboursement TVA sont déjà déduits.



# APPARTEMENT TYPE

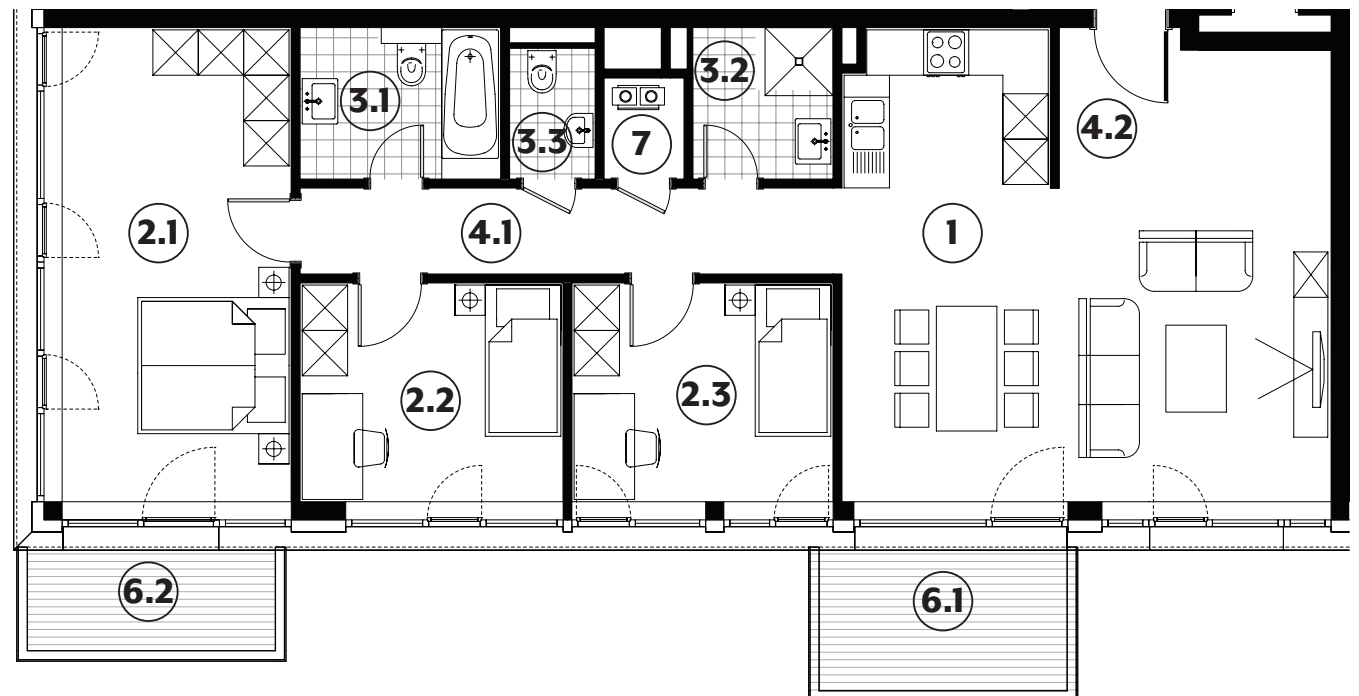
# 164



<b>1</b>	séjour/cuisine	<b>36,15m<sup>2</sup></b>
<b>2.1</b>	chambre	<b>19,00m<sup>2</sup></b>
<b>2.2</b>	chambre	<b>10,05m<sup>2</sup></b>
<b>2.3</b>	chambre	<b>10,00m<sup>2</sup></b>
<b>3.1</b>	salle de bains	<b>5,30m<sup>2</sup></b>
<b>3.2</b>	salle de douche	<b>3,70m<sup>2</sup></b>
<b>3.3</b>	wc	<b>1,95m<sup>2</sup></b>
<b>4.1</b>	couloir	<b>8,15m<sup>2</sup></b>
<b>4.2</b>	hall	<b>3,40m<sup>2</sup></b>
<b>6.1</b>	balcon	<b>6,25m<sup>2</sup></b>
<b>6.2</b>	balcon	<b>4,50m<sup>2</sup></b>
<b>7</b>	technique	<b>1,40m<sup>2</sup></b>

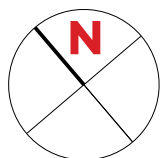
surface habitable

**99,10m<sup>2</sup>**



# APPARTEMENT TYPE

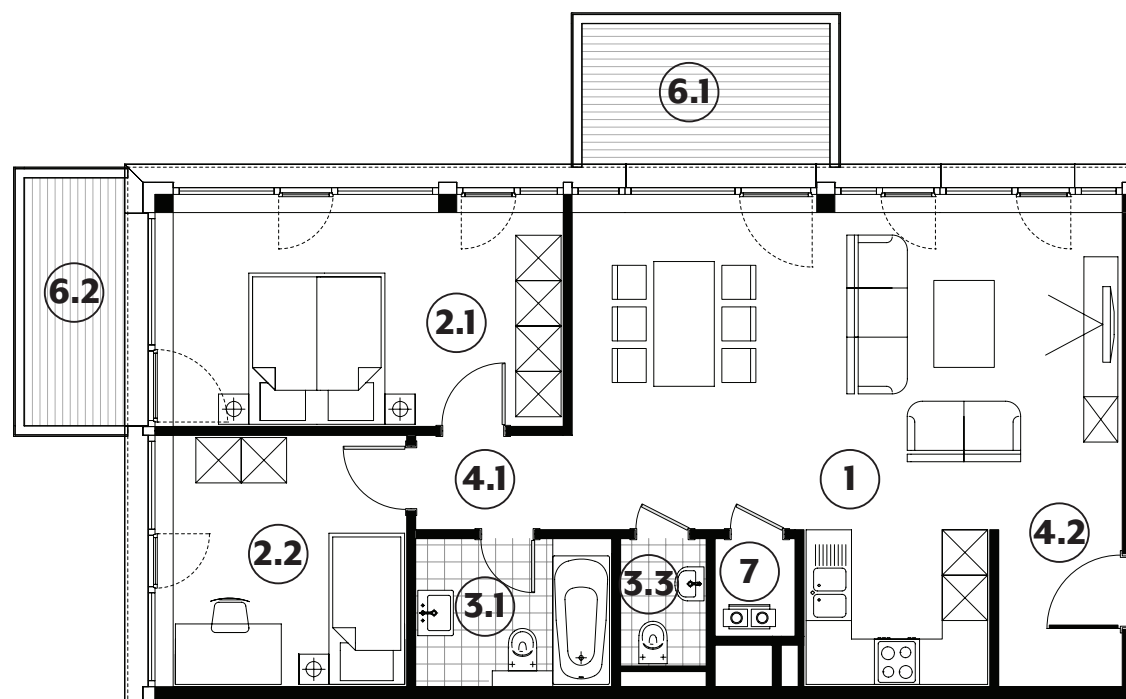
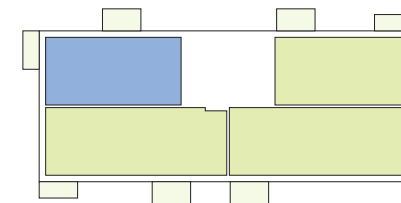
# 165



<b>1</b>	séjour/cuisine	<b>35,60m<sup>2</sup></b>
<b>2.1</b>	chambre	<b>14,60m<sup>2</sup></b>
<b>2.2</b>	chambre	<b>10,25m<sup>2</sup></b>
<b>3.1</b>	salle de bains	<b>5,10m<sup>2</sup></b>
<b>3.3</b>	wc	<b>1,90m<sup>2</sup></b>
<b>4.1</b>	couloir	<b>2,60m<sup>2</sup></b>
<b>4.2</b>	hall	<b>3,40m<sup>2</sup></b>
<b>6.1</b>	balcon	<b>6,25m<sup>2</sup></b>
<b>6.2</b>	balcon	<b>4,50m<sup>2</sup></b>
<b>7</b>	technique	<b>1,35m<sup>2</sup></b>

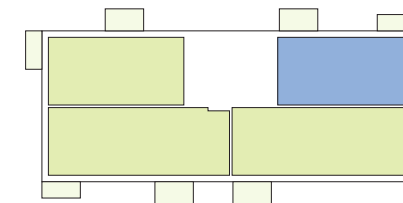
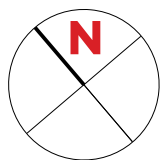
surface habitable

**74,80m<sup>2</sup>**





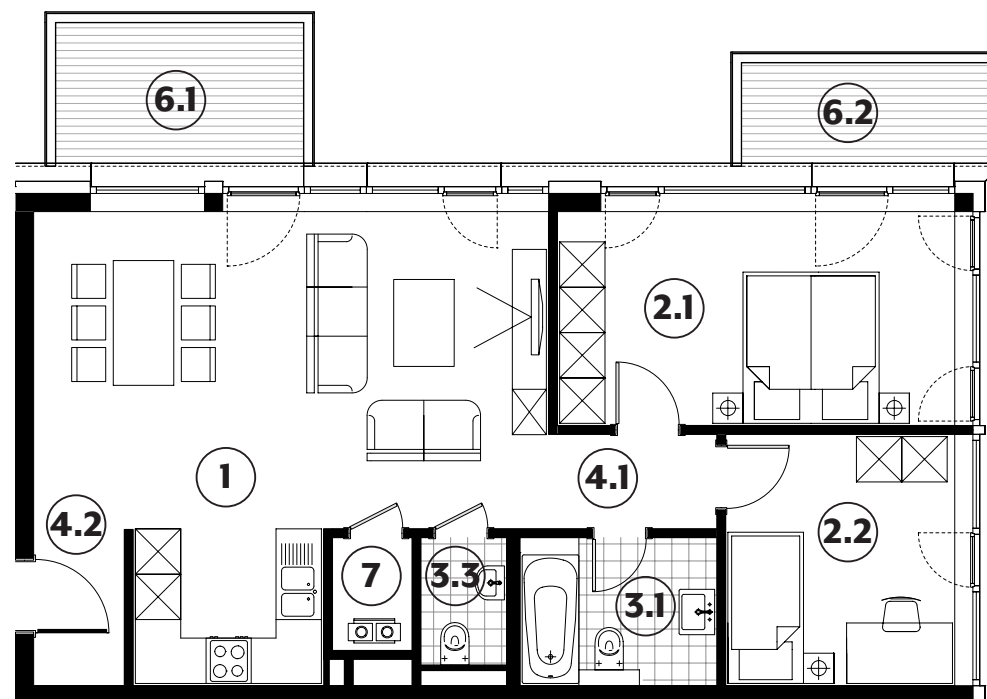
# APPARTEMENT TYPE 166



<b>1</b>	séjour/cuisine	<b>33,80m<sup>2</sup></b>
<b>2.1</b>	chambre	<b>14,85m<sup>2</sup></b>
<b>2.2</b>	chambre	<b>10,05m<sup>2</sup></b>
<b>3.1</b>	salle de bains	<b>5,10m<sup>2</sup></b>
<b>3.3</b>	wc	<b>1,90m<sup>2</sup></b>
<b>4.1</b>	couloir	<b>2,80m<sup>2</sup></b>
<b>4.2</b>	hall	<b>2,50m<sup>2</sup></b>
<b>6.1</b>	balcon	<b>6,25m<sup>2</sup></b>
<b>6.2</b>	balcon	<b>4,50m<sup>2</sup></b>
<b>7</b>	technique	<b>1,60m<sup>2</sup></b>

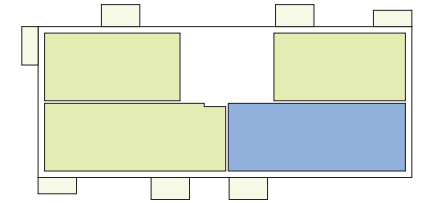
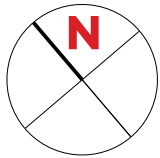
surface habitable

**72,60m<sup>2</sup>**



# APPARTEMENT TYPE

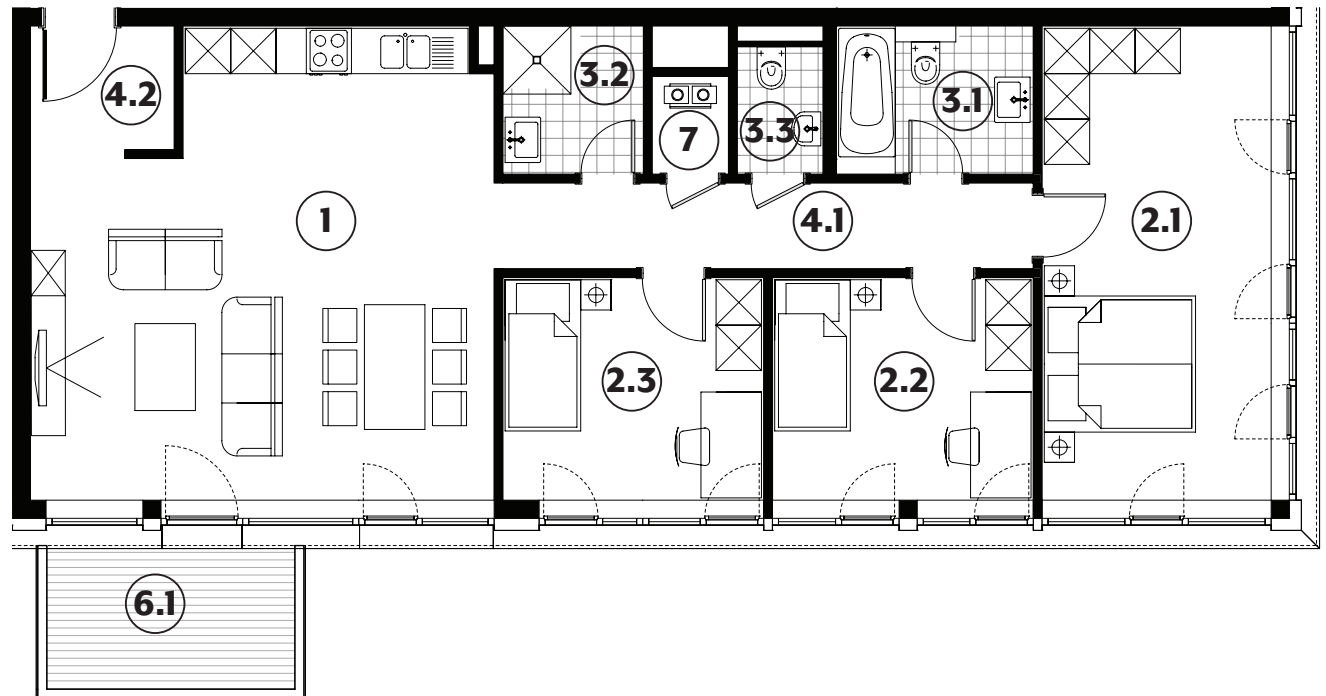
# 167



<b>1</b>	séjour/cuisine	<b>34,75m<sup>2</sup></b>
<b>2.1</b>	chambre	<b>19,00m<sup>2</sup></b>
<b>2.2</b>	chambre	<b>10,15m<sup>2</sup></b>
<b>2.3</b>	chambre	<b>10,15m<sup>2</sup></b>
<b>3.1</b>	salle de bains	<b>5,10m<sup>2</sup></b>
<b>3.2</b>	salle de douche	<b>3,65m<sup>2</sup></b>
<b>3.3</b>	wc	<b>1,90m<sup>2</sup></b>
<b>4.1</b>	couloir	<b>8,10m<sup>2</sup></b>
<b>4.2</b>	hall	<b>3,25m<sup>2</sup></b>
<b>6.1</b>	balcon	<b>6,25m<sup>2</sup></b>
<b>7</b>	technique	<b>1,30m<sup>2</sup></b>

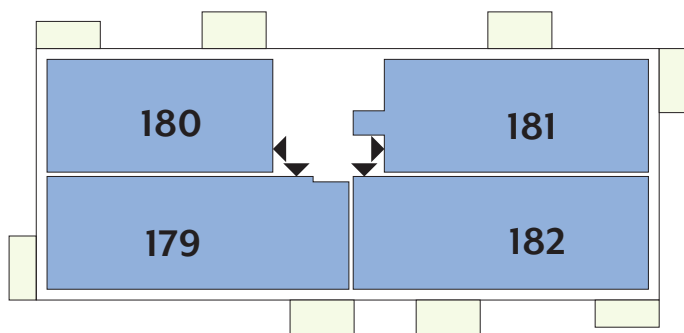
surface habitable

**97,35m<sup>2</sup>**



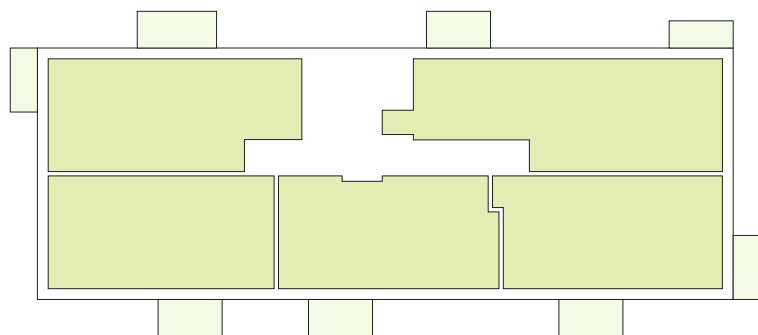
## APPARTEMENTS

# 2 ETAGE



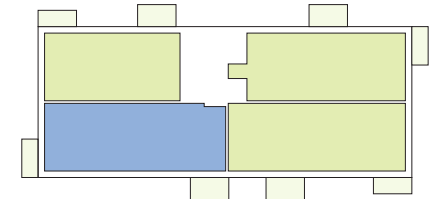
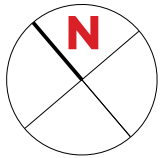
Type	Surface Utile	surface terrasse	surface cave	prix de vente subventionné TVA 3% *
<b>179</b>	103,15m <sup>2</sup>	10,75m <sup>2</sup>	8,87m <sup>2</sup>	<b>364.020 €**</b>
<b>180</b>	77,49m <sup>2</sup>	10,75m <sup>2</sup>	5,09m <sup>2</sup>	<b>270.998 €</b>
<b>181</b>	93,16m <sup>2</sup>	10,75m <sup>2</sup>	5,74m <sup>2</sup>	<b>305.385 €</b>
<b>182</b>	101,42m <sup>2</sup>	10,75m <sup>2</sup>	6,03m <sup>2</sup>	<b>359.707 €**</b>

- les surfaces inscrites dans ce tableau peuvent subir de légères modifications dues aux nécessités techniques de la construction.
- surface utile = surface calculée à l'intérieur des murs extérieurs.
- \* primes ACE sont déjà déduites ( uniquement pour les acquéreurs bénéficiant d'une prime de construction de l'État. )
- \*\* primes ACE et remboursement TVA sont déjà déduits.



# APPARTEMENT TYPE

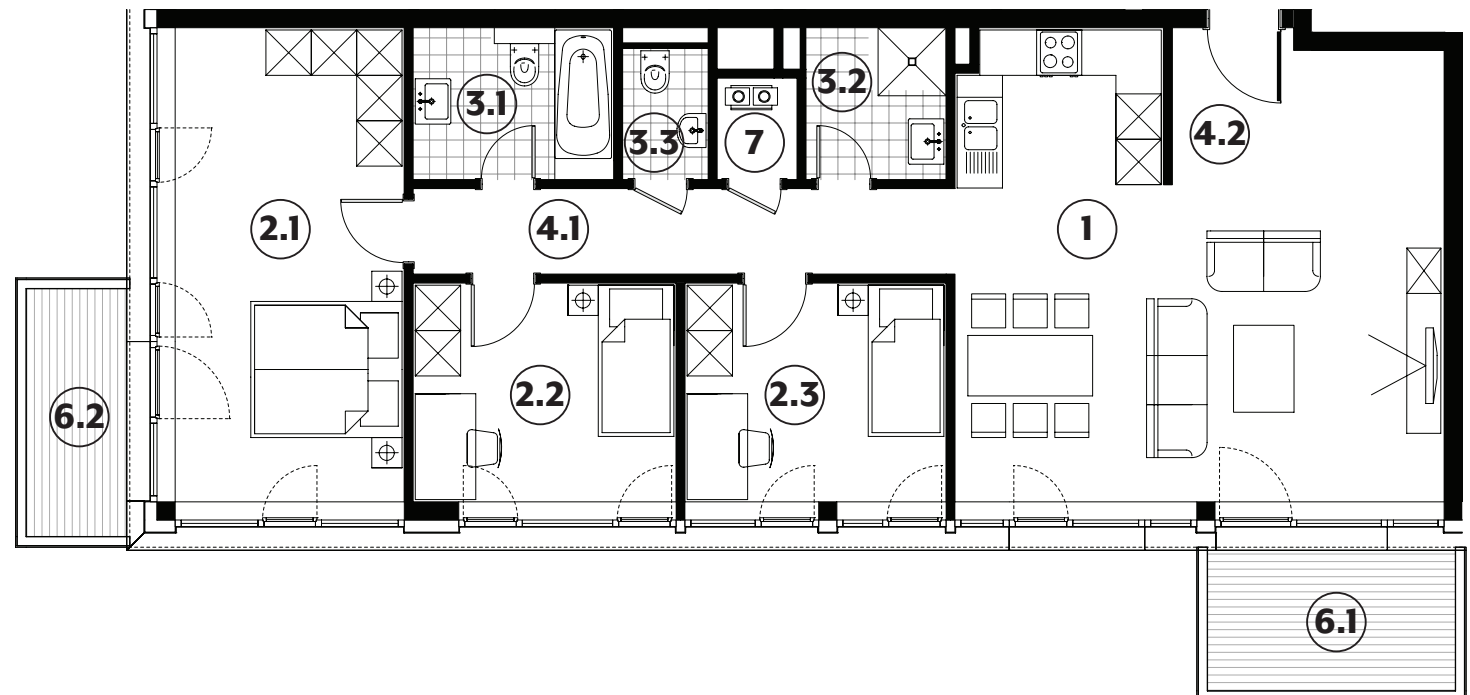
# 179



<b>1</b>	séjour/cuisine	<b>36,20m<sup>2</sup></b>
<b>2.1</b>	chambre	<b>19,00m<sup>2</sup></b>
<b>2.2</b>	chambre	<b>10,05m<sup>2</sup></b>
<b>2.3</b>	chambre	<b>10,00m<sup>2</sup></b>
<b>3.1</b>	salle de bains	<b>5,35m<sup>2</sup></b>
<b>3.2</b>	salle de douche	<b>3,75m<sup>2</sup></b>
<b>3.3</b>	wc	<b>1,95m<sup>2</sup></b>
<b>4.1</b>	couloir	<b>8,15m<sup>2</sup></b>
<b>4.2</b>	hall	<b>3,35m<sup>2</sup></b>
<b>6.1</b>	balcon	<b>6,25m<sup>2</sup></b>
<b>6.2</b>	balcon	<b>4,50m<sup>2</sup></b>
<b>7</b>	technique	<b>1,45m<sup>2</sup></b>

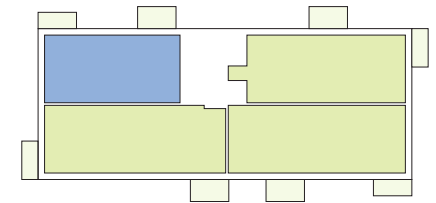
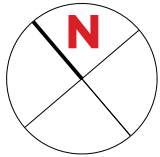
surface habitable

**99,25m<sup>2</sup>**



# APPARTEMENT TYPE

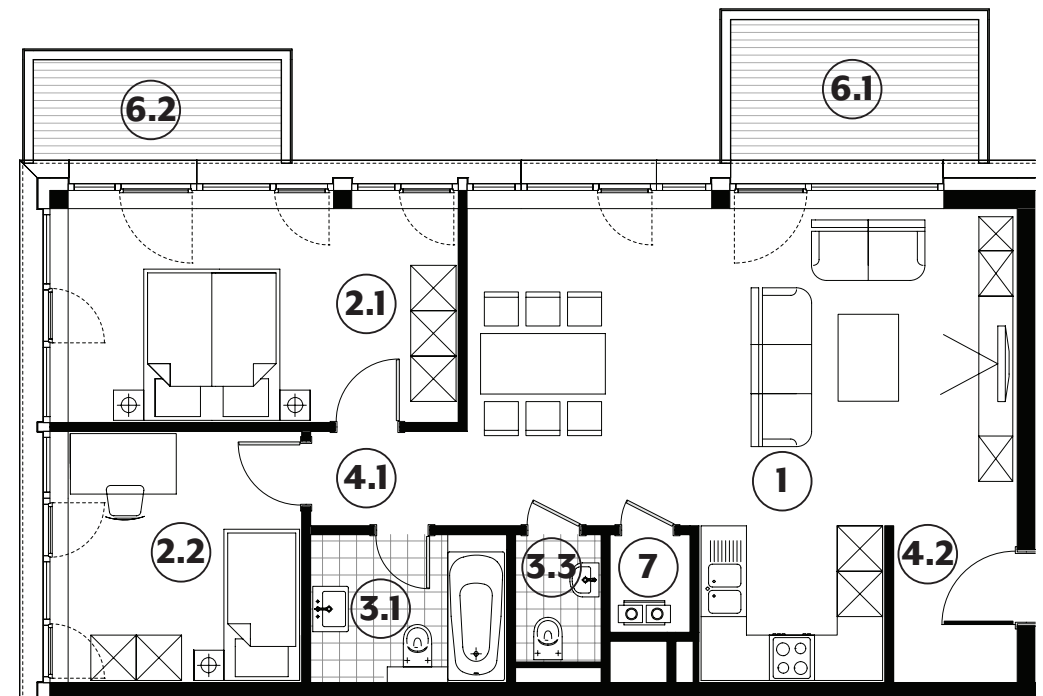
# 180



<b>1</b>	séjour/cuisine	<b>35,60m<sup>2</sup></b>
<b>2.1</b>	chambre	<b>14,60m<sup>2</sup></b>
<b>2.2</b>	chambre	<b>10,25m<sup>2</sup></b>
<b>3.1</b>	salle de bains	<b>5,10m<sup>2</sup></b>
<b>3.3</b>	wc	<b>1,90m<sup>2</sup></b>
<b>4.1</b>	couloir	<b>2,60m<sup>2</sup></b>
<b>4.2</b>	hall	<b>3,40m<sup>2</sup></b>
<b>6.1</b>	balcon	<b>6,25m<sup>2</sup></b>
<b>6.2</b>	balcon	<b>4,50m<sup>2</sup></b>
<b>7</b>	technique	<b>1,35m<sup>2</sup></b>

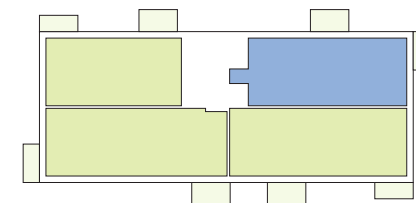
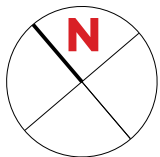
surface habitable

**74,80m<sup>2</sup>**



# APPARTEMENT TYPE

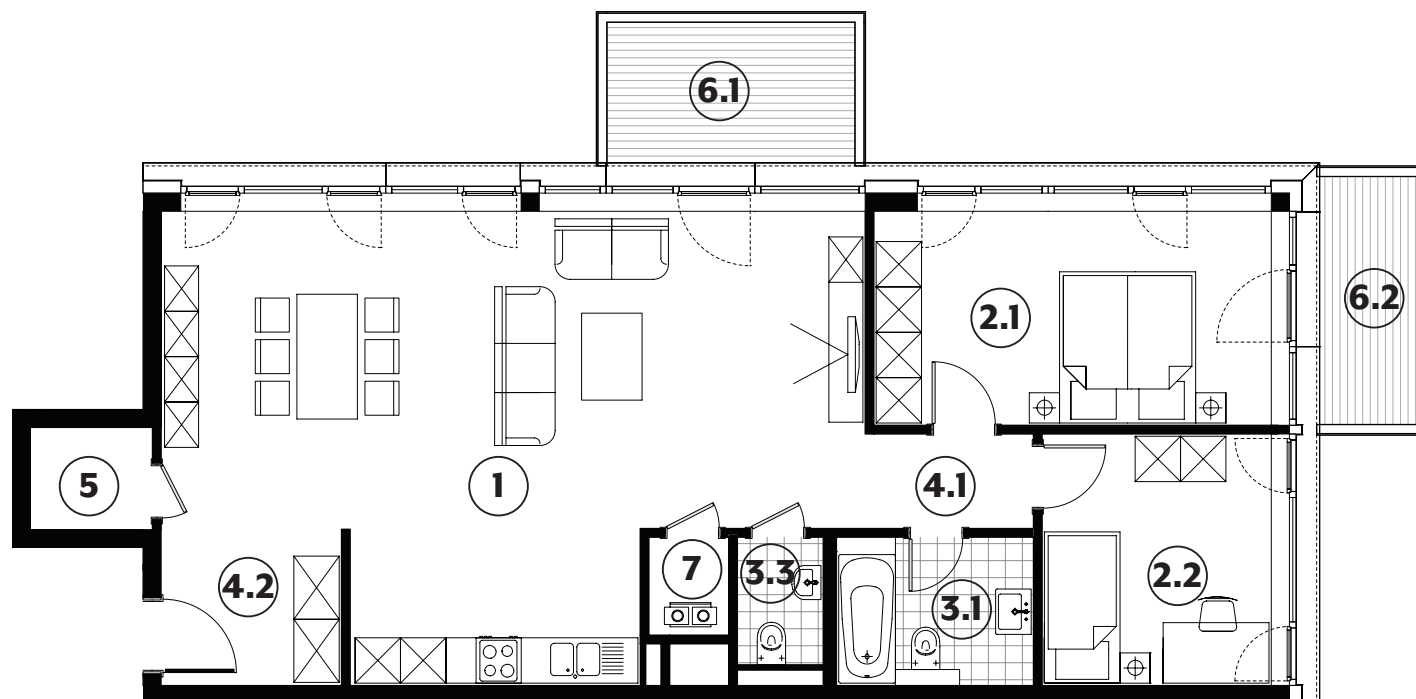
# 181



<b>1</b>	séjour/cuisine	<b>47,05m<sup>2</sup></b>
<b>2.1</b>	chambre	<b>14,85m<sup>2</sup></b>
<b>2.2</b>	chambre	<b>10,05m<sup>2</sup></b>
<b>3.1</b>	salle de bains	<b>5,10m<sup>2</sup></b>
<b>3.3</b>	wc	<b>1,90m<sup>2</sup></b>
<b>4.1</b>	couloir	<b>2,80m<sup>2</sup></b>
<b>4.2</b>	hall	<b>4,95m<sup>2</sup></b>
<b>5</b>	débarras	<b>2,20m<sup>2</sup></b>
<b>6.1</b>	balcon	<b>6,25m<sup>2</sup></b>
<b>6.2</b>	balcon	<b>4,50m<sup>2</sup></b>
<b>7</b>	technique	<b>1,35m<sup>2</sup></b>

surface habitable

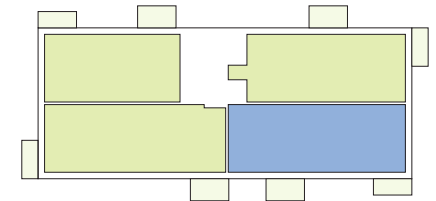
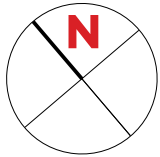
**90,25m<sup>2</sup>**





# APPARTEMENT TYPE

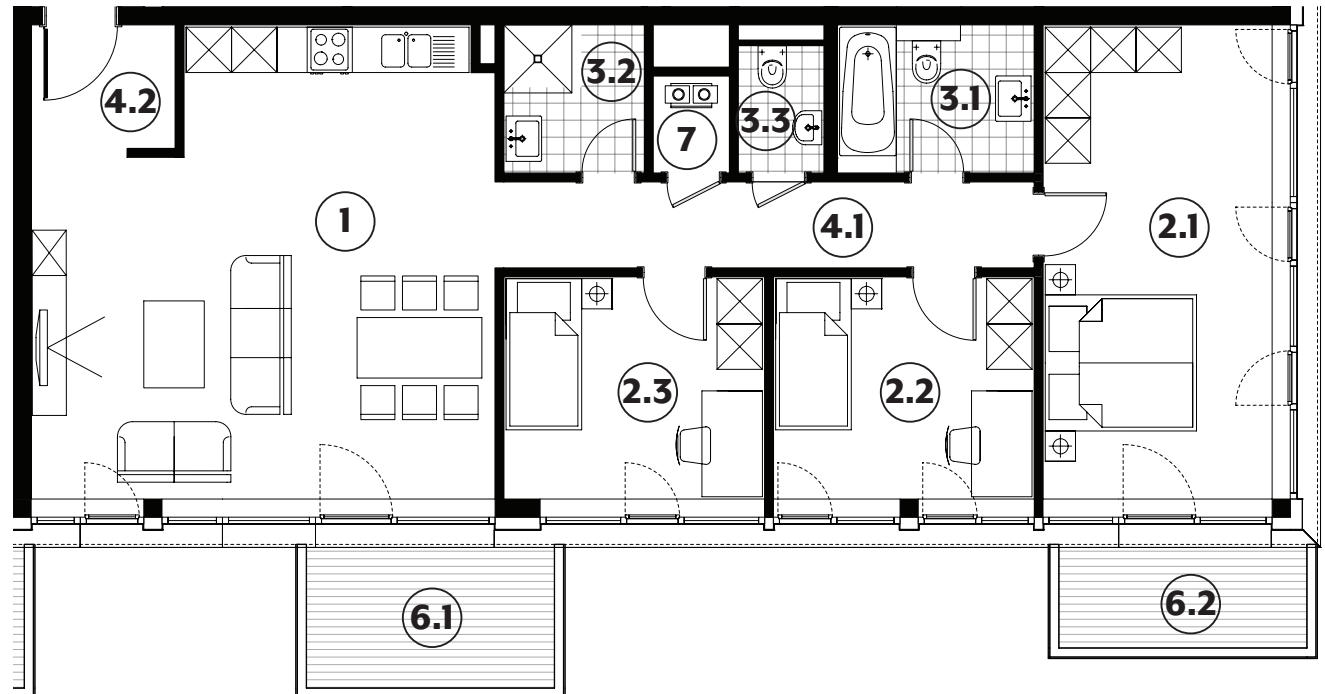
# 182



<b>1</b>	séjour/cuisine	<b>34,75m<sup>2</sup></b>
<b>2.1</b>	chambre	<b>19,00m<sup>2</sup></b>
<b>2.2</b>	chambre	<b>10,15m<sup>2</sup></b>
<b>2.3</b>	chambre	<b>10,15m<sup>2</sup></b>
<b>3.1</b>	salle de bains	<b>5,10m<sup>2</sup></b>
<b>3.2</b>	salle de douche	<b>3,65m<sup>2</sup></b>
<b>3.3</b>	wc	<b>1,90m<sup>2</sup></b>
<b>4.1</b>	couloir	<b>8,15m<sup>2</sup></b>
<b>4.2</b>	hall	<b>3,25m<sup>2</sup></b>
<b>6.1</b>	balcon	<b>6,25m<sup>2</sup></b>
<b>6.2</b>	balcon	<b>4,50m<sup>2</sup></b>
<b>7</b>	technique	<b>1,30m<sup>2</sup></b>

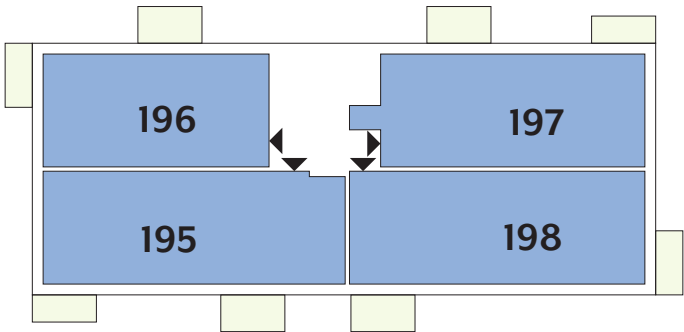
surface habitable

**97,40m<sup>2</sup>**



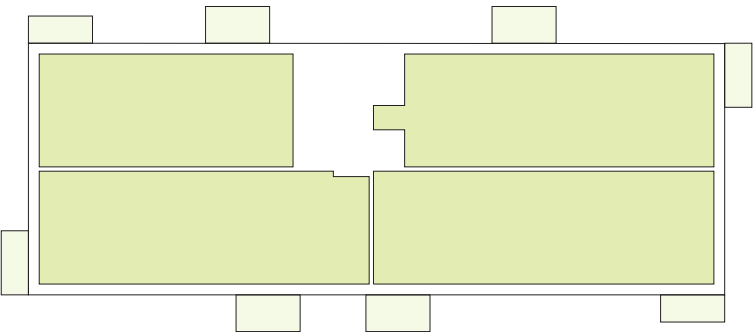
APPARTEMENTS

3 ETAGE



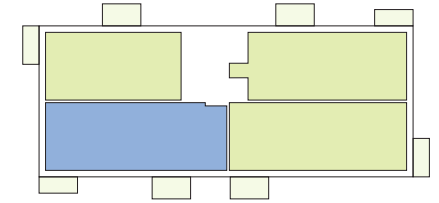
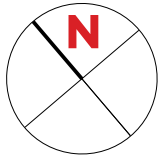
Type	Surface Utile	surface terrasse	surface cave	prix de vente subventionné TVA 3% *
195	102,94m <sup>2</sup>	10,75m <sup>2</sup>	7,54m <sup>2</sup>	369.891 €**
196	77,28m <sup>2</sup>	10,75m <sup>2</sup>	5,62m <sup>2</sup>	274.833 €
197	93,16m <sup>2</sup>	10,75m <sup>2</sup>	7,98m <sup>2</sup>	310.507 €
198	101,42m <sup>2</sup>	10,75m <sup>2</sup>	6,31m <sup>2</sup>	366.013 €**

- les surfaces inscrites dans ce tableau peuvent subir de légères modifications dues aux nécessités techniques de la construction.
- surface utile = surface calculée à l'intérieur des murs extérieurs.
- \* primes ACE sont déjà déduites ( uniquement pour les acquéreurs bénéficiant d'une prime de construction de l'État. )
- \*\* primes ACE et remboursement TVA sont déjà déduits.



# APPARTEMENT TYPE

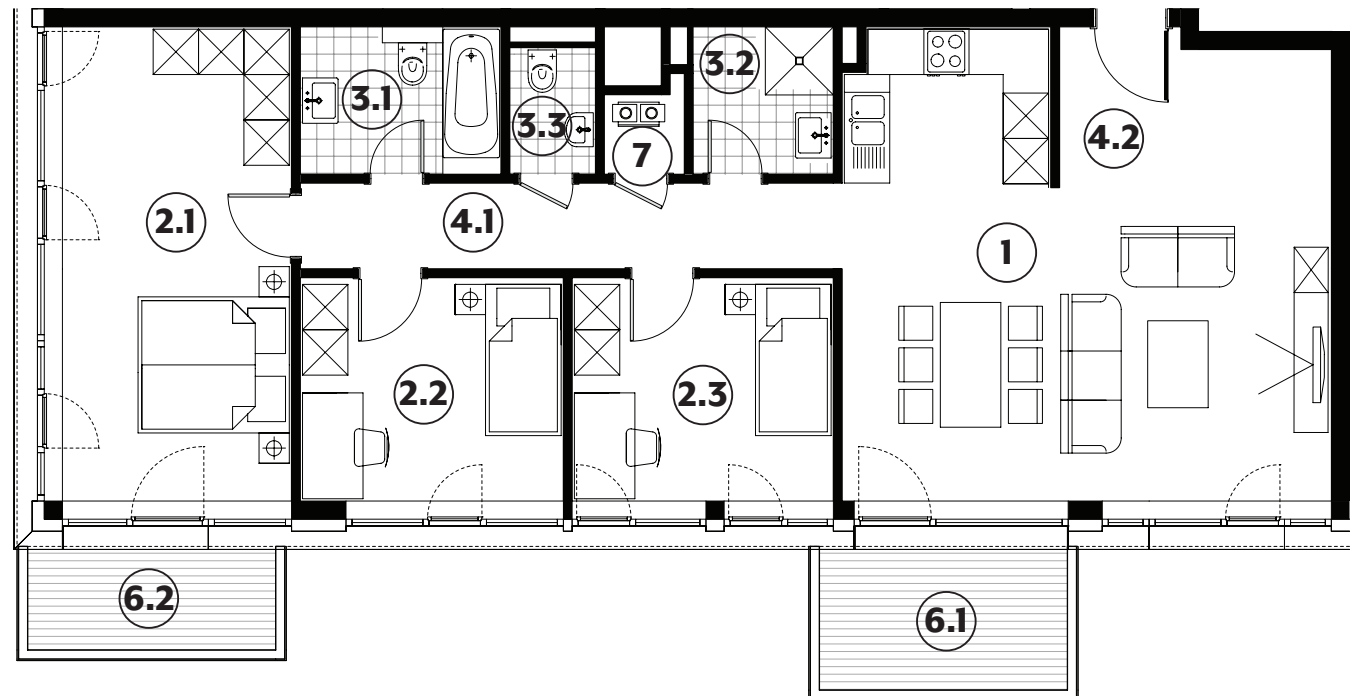
# 195



<b>1</b>	séjour/cuisine	<b>36,15m<sup>2</sup></b>
<b>2.1</b>	chambre	<b>19,00m<sup>2</sup></b>
<b>2.2</b>	chambre	<b>10,30m<sup>2</sup></b>
<b>2.3</b>	chambre	<b>10,20m<sup>2</sup></b>
<b>3.1</b>	salle de bains	<b>5,20m<sup>2</sup></b>
<b>3.2</b>	salle de douche	<b>3,60m<sup>2</sup></b>
<b>3.3</b>	wc	<b>1,90m<sup>2</sup></b>
<b>4.1</b>	couloir	<b>8,15m<sup>2</sup></b>
<b>4.2</b>	hall	<b>3,40m<sup>2</sup></b>
<b>6.1</b>	balcon	<b>6,25m<sup>2</sup></b>
<b>6.2</b>	balcon	<b>4,50m<sup>2</sup></b>
<b>7</b>	technique	<b>1,15m<sup>2</sup></b>

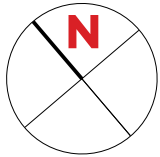
surface habitable

**99,05m<sup>2</sup>**



# APPARTEMENT TYPE

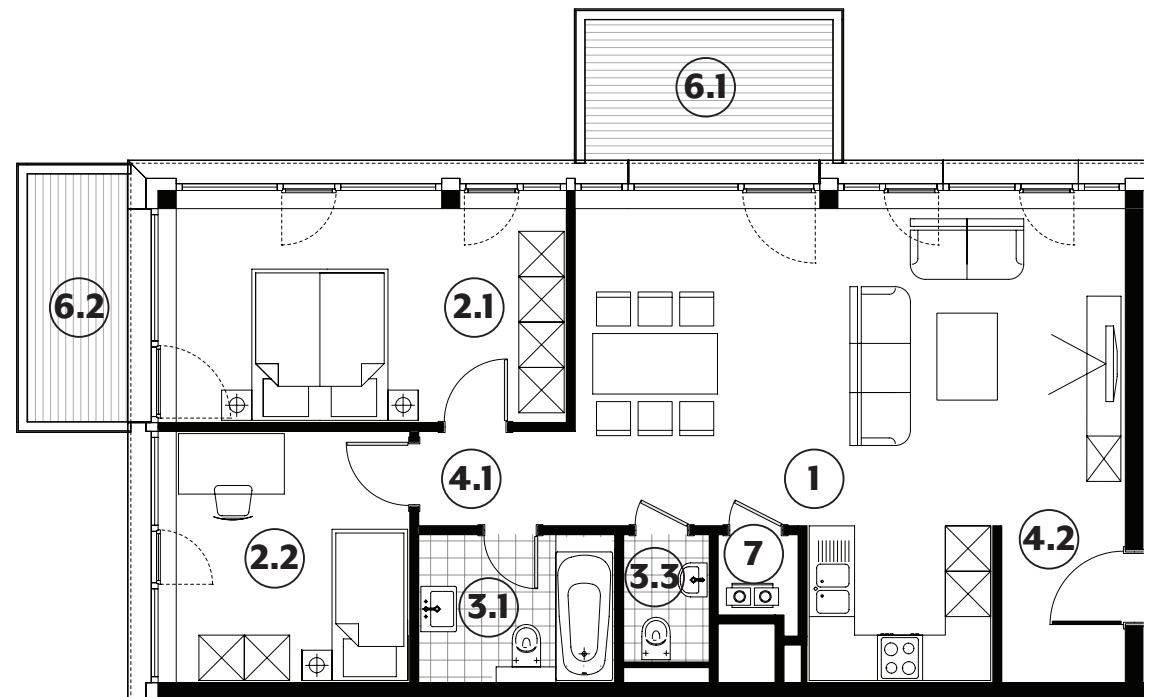
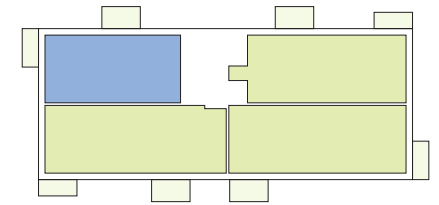
# 196



<b>1</b>	séjour/cuisine	<b>35,60m<sup>2</sup></b>
<b>2.1</b>	chambre	<b>14,60m<sup>2</sup></b>
<b>2.2</b>	chambre	<b>10,25m<sup>2</sup></b>
<b>3.1</b>	salle de bains	<b>5,10m<sup>2</sup></b>
<b>3.3</b>	wc	<b>1,90m<sup>2</sup></b>
<b>4.1</b>	couloir	<b>2,60m<sup>2</sup></b>
<b>4.2</b>	hall	<b>3,40m<sup>2</sup></b>
<b>6.1</b>	balcon	<b>6,25m<sup>2</sup></b>
<b>6.2</b>	balcon	<b>4,50m<sup>2</sup></b>
<b>7</b>	technique	<b>1,15m<sup>2</sup></b>

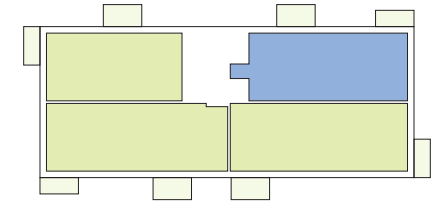
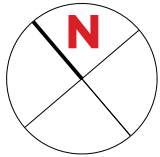
surface habitable

**74,60m<sup>2</sup>**



# APPARTEMENT TYPE

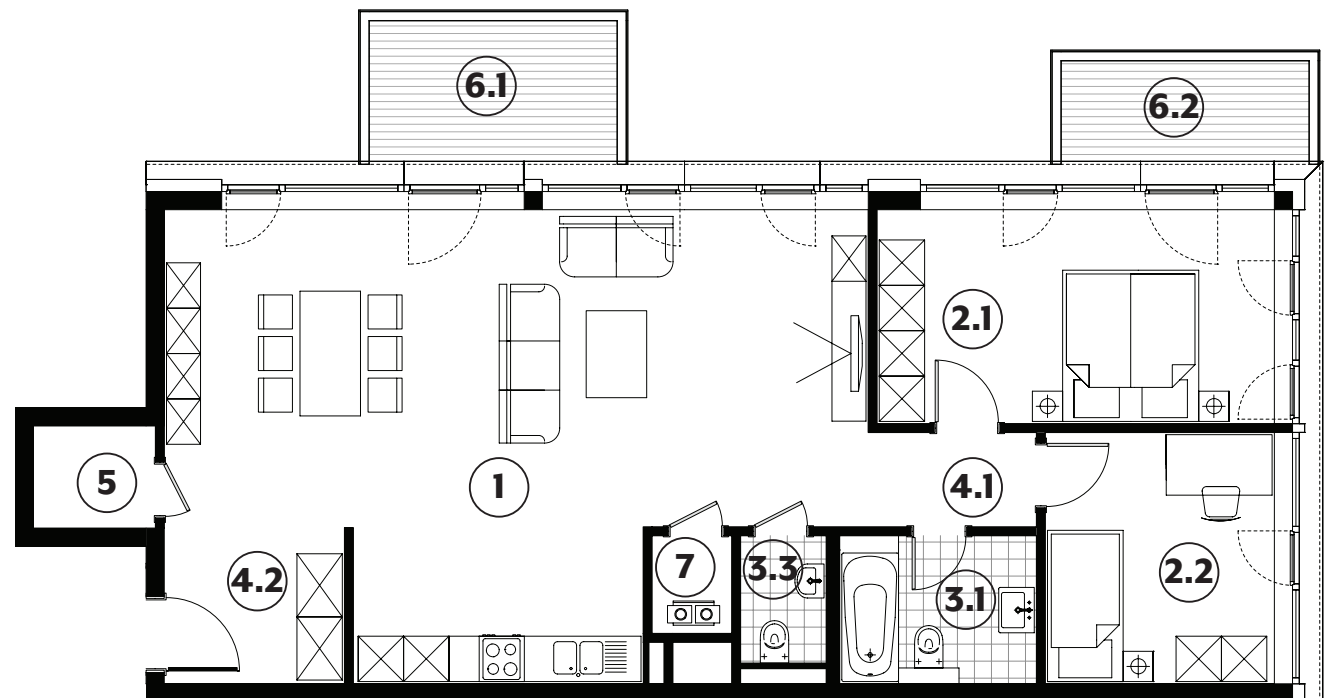
# 197



<b>1</b>	séjour/cuisine	<b>47,05m<sup>2</sup></b>
<b>2.1</b>	chambre	<b>14,85m<sup>2</sup></b>
<b>2.2</b>	chambre	<b>10,05m<sup>2</sup></b>
<b>3.1</b>	salle de bains	<b>5,10m<sup>2</sup></b>
<b>3.3</b>	wc	<b>1,90m<sup>2</sup></b>
<b>4.1</b>	couloir	<b>2,80m<sup>2</sup></b>
<b>4.2</b>	hall	<b>4,95m<sup>2</sup></b>
<b>5</b>	débarras	<b>2,20m<sup>2</sup></b>
<b>6.1</b>	balcon	<b>6,25m<sup>2</sup></b>
<b>6.2</b>	balcon	<b>4,50m<sup>2</sup></b>
<b>7</b>	technique	<b>1,35m<sup>2</sup></b>

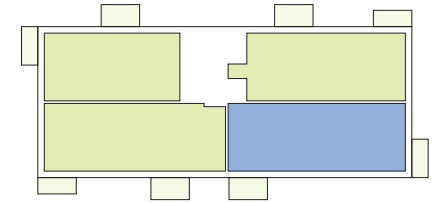
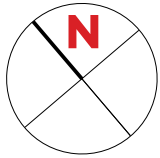
surface habitable

**90,25m<sup>2</sup>**



# APPARTEMENT TYPE

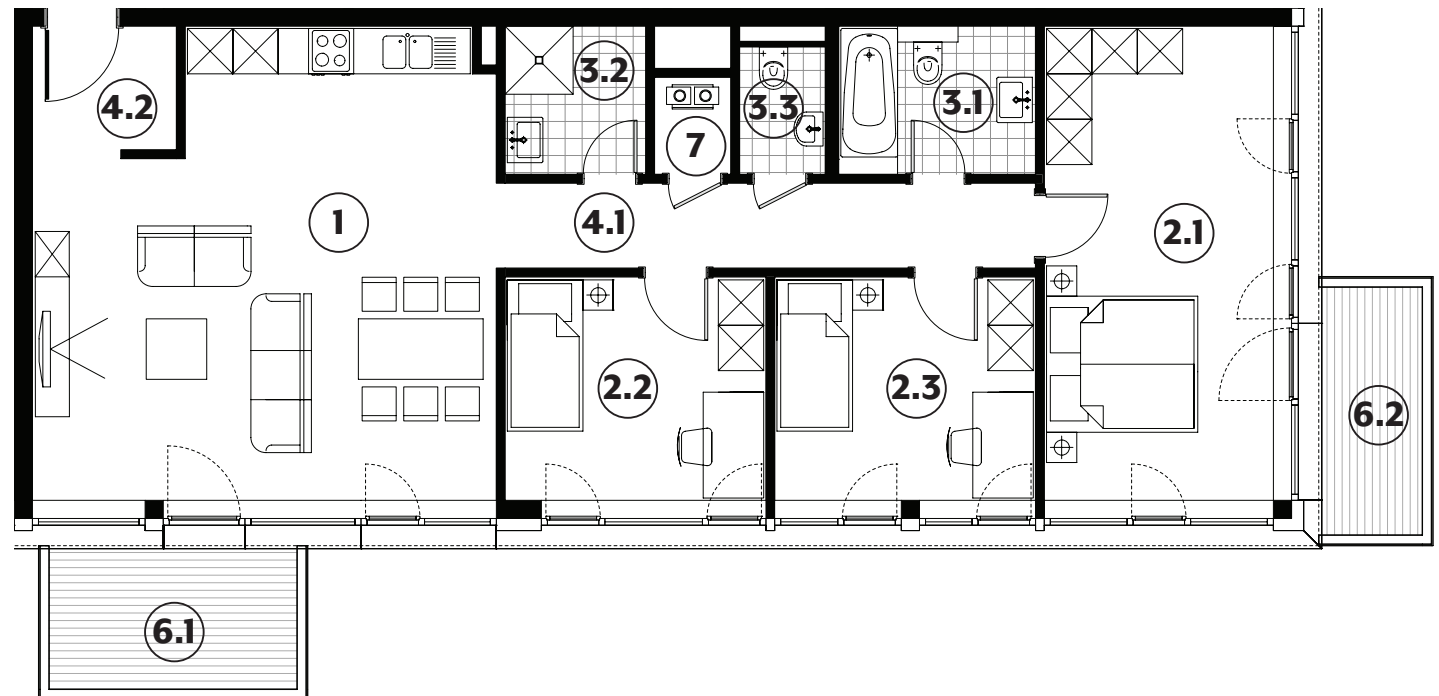
# 198



<b>1</b>	séjour/cuisine	<b>34,75m<sup>2</sup></b>
<b>2.1</b>	chambre	<b>19,00m<sup>2</sup></b>
<b>2.2</b>	chambre	<b>10,20m<sup>2</sup></b>
<b>2.3</b>	chambre	<b>10,20m<sup>2</sup></b>
<b>3.1</b>	salle de bains	<b>5,10m<sup>2</sup></b>
<b>3.2</b>	salle de douche	<b>3,65m<sup>2</sup></b>
<b>3.3</b>	wc	<b>1,90m<sup>2</sup></b>
<b>4.1</b>	couloir	<b>8,00m<sup>2</sup></b>
<b>4.2</b>	hall	<b>3,25m<sup>2</sup></b>
<b>6.1</b>	balcon	<b>6,25m<sup>2</sup></b>
<b>6.2</b>	balcon	<b>4,50m<sup>2</sup></b>
<b>7</b>	technique	<b>1,30m<sup>2</sup></b>

surface habitable

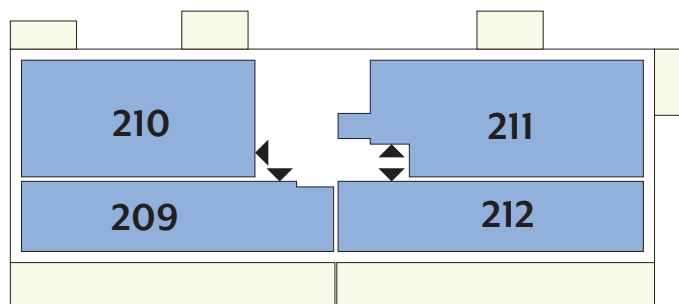
**97,35m<sup>2</sup>**





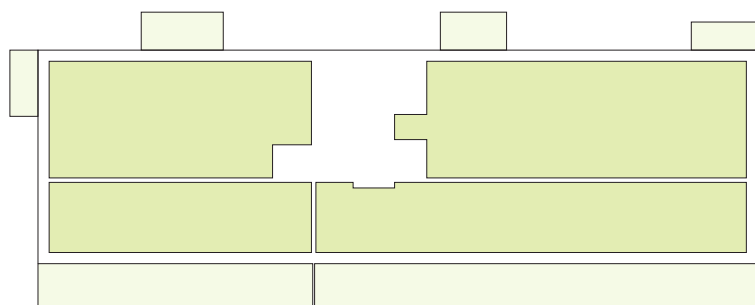
## APPARTEMENTS

# 4 ETAGE



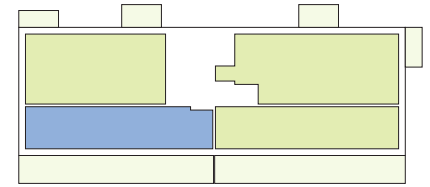
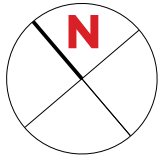
Type	Surface Utile	surface terrasse	surface cave	prix de vente subventionné TVA 3% *
<b>209</b>	61,39m <sup>2</sup>	32,75m <sup>2</sup>	5,51m <sup>2</sup>	<b>244.768 €</b>
<b>210</b>	77,27m <sup>2</sup>	10,75m <sup>2</sup>	5,61m <sup>2</sup>	<b>278.388 €</b>
<b>211</b>	89,47m <sup>2</sup>	10,75m <sup>2</sup>	5,66m <sup>2</sup>	<b>306.323 €</b>
<b>212</b>	60,46m <sup>2</sup>	32,05m <sup>2</sup>	5,37m <sup>2</sup>	<b>242.639 €</b>

- les surfaces inscrites dans ce tableau peuvent subir de légères modifications dues aux nécessités techniques de la construction.
- surface utile = surface calculée à l'intérieur des murs extérieurs.
- \* primes ACE sont déjà déduites (uniquement pour les acquéreurs bénéficiant d'une prime de construction de l'Etat.)
- \*\* primes ACE et remboursement TVA sont déjà déduits.



# APPARTEMENT TYPE

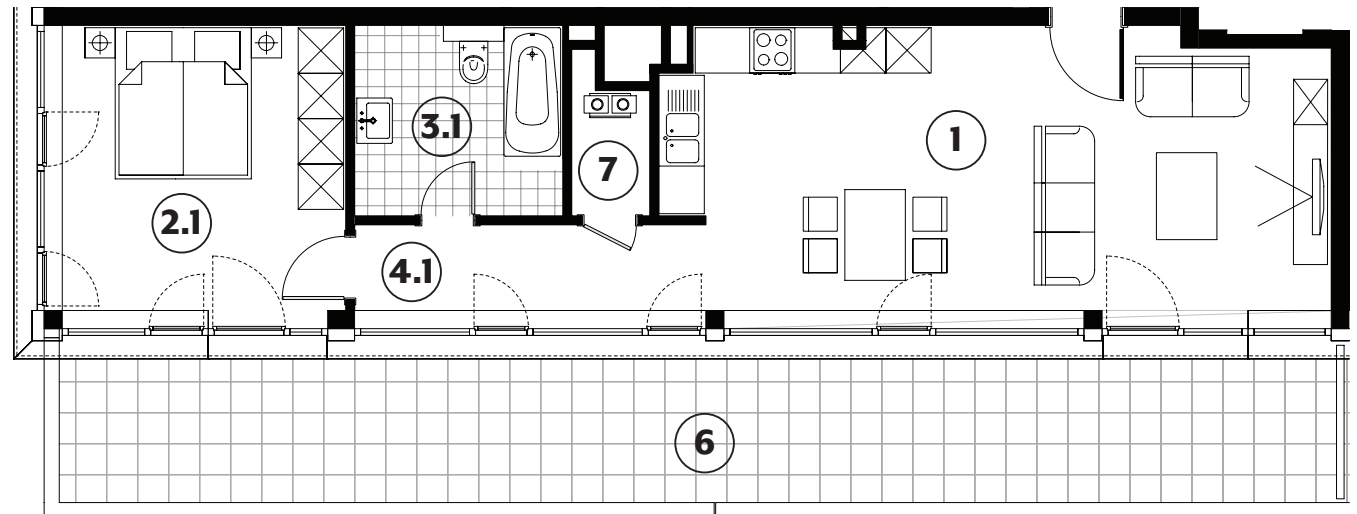
# 209



<b>1</b>	séjour/cuisine	<b>31,75m<sup>2</sup></b>
<b>2.1</b>	chambre	<b>14,15m<sup>2</sup></b>
<b>3.1</b>	salle de bains	<b>6,95m<sup>2</sup></b>
<b>4.1</b>	couloir	<b>5,25m<sup>2</sup></b>
<b>6</b>	terrasse	<b>32,75m<sup>2</sup></b>
<b>7</b>	technique	<b>1,90m<sup>2</sup></b>

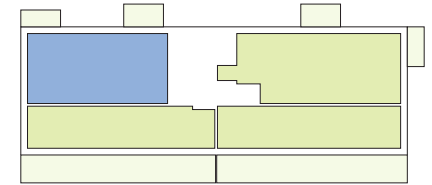
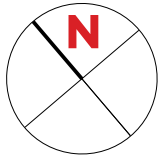
surface habitable

**60,00m<sup>2</sup>**



# APPARTEMENT TYPE

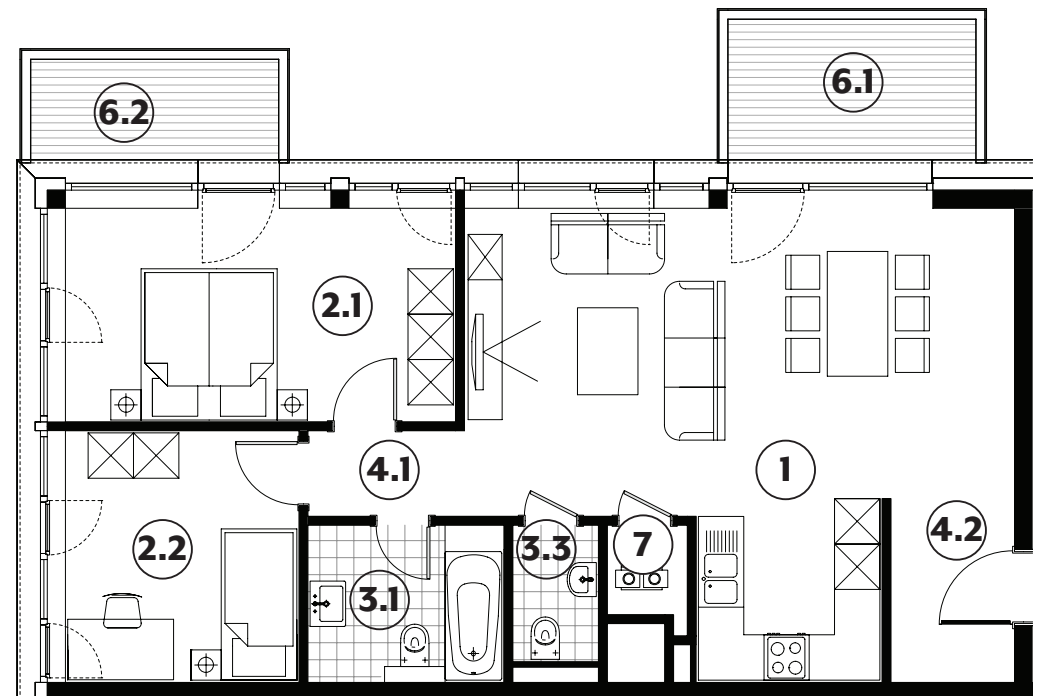
# 210



<b>1</b>	séjour/cuisine	<b>34,65m<sup>2</sup></b>
<b>2.1</b>	chambre	<b>14,60m<sup>2</sup></b>
<b>2.2</b>	chambre	<b>10,30m<sup>2</sup></b>
<b>3.1</b>	salle de bains	<b>5,40m<sup>2</sup></b>
<b>3.3</b>	wc	<b>2,05m<sup>2</sup></b>
<b>4.1</b>	couloir	<b>2,35m<sup>2</sup></b>
<b>4.2</b>	hall	<b>3,95m<sup>2</sup></b>
<b>6.1</b>	balcon	<b>6,25m<sup>2</sup></b>
<b>6.2</b>	balcon	<b>4,50m<sup>2</sup></b>
<b>7</b>	technique	<b>1,30m<sup>2</sup></b>

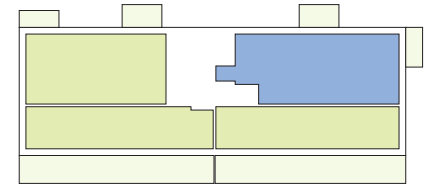
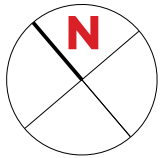
surface habitable

**74,60m<sup>2</sup>**



# APPARTEMENT TYPE

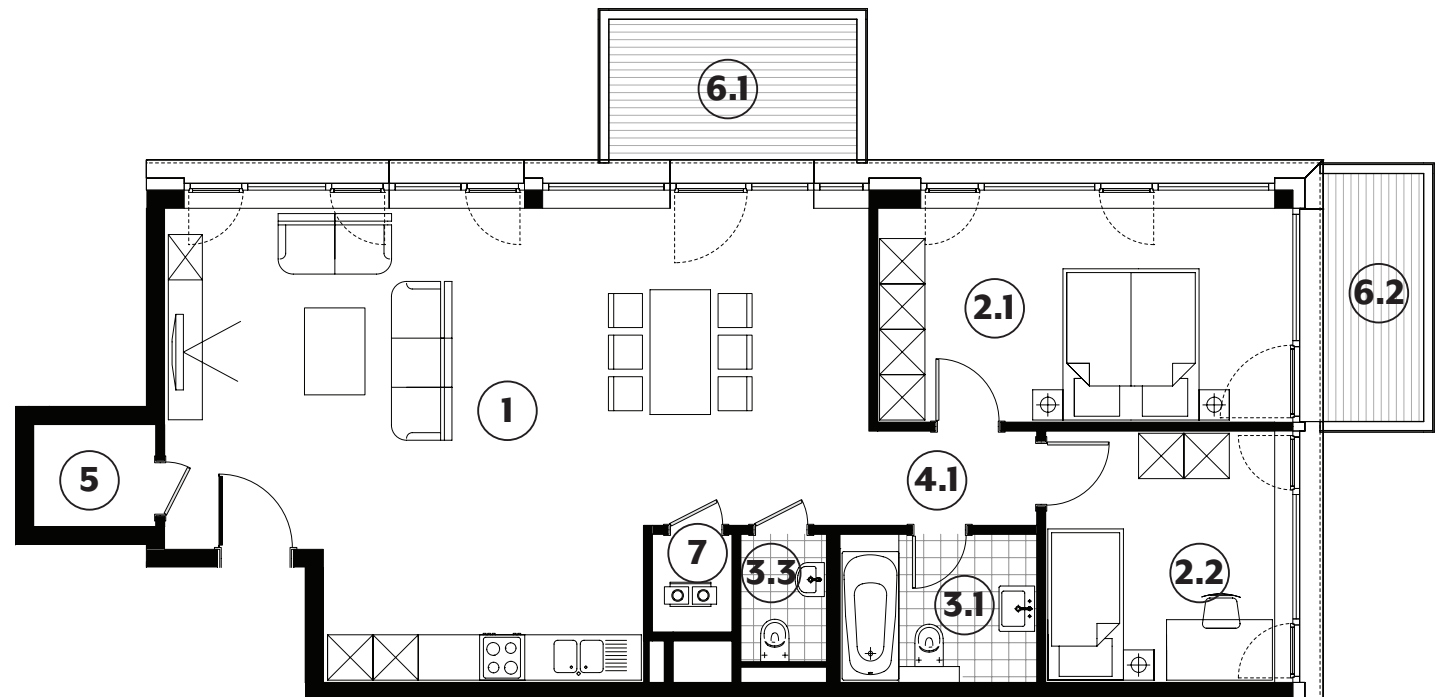
# 211



<b>1</b>	séjour/cuisine	<b>48,55m<sup>2</sup></b>
<b>2.1</b>	chambre	<b>14,85m<sup>2</sup></b>
<b>2.2</b>	chambre	<b>10,05m<sup>2</sup></b>
<b>3.1</b>	salle de bains	<b>5,10m<sup>2</sup></b>
<b>3.3</b>	wc	<b>1,90m<sup>2</sup></b>
<b>4.1</b>	couloir	<b>2,80m<sup>2</sup></b>
<b>5</b>	débarras	<b>2,20m<sup>2</sup></b>
<b>6.1</b>	balcon	<b>6,25m<sup>2</sup></b>
<b>6.2</b>	balcon	<b>4,50m<sup>2</sup></b>
<b>7</b>	technique	<b>1,35m<sup>2</sup></b>

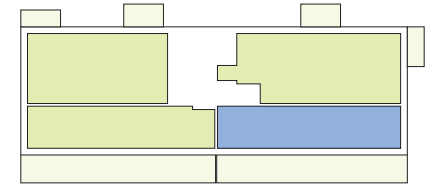
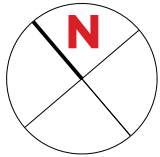
surface habitable

**86,80m<sup>2</sup>**



# APPARTEMENT TYPE

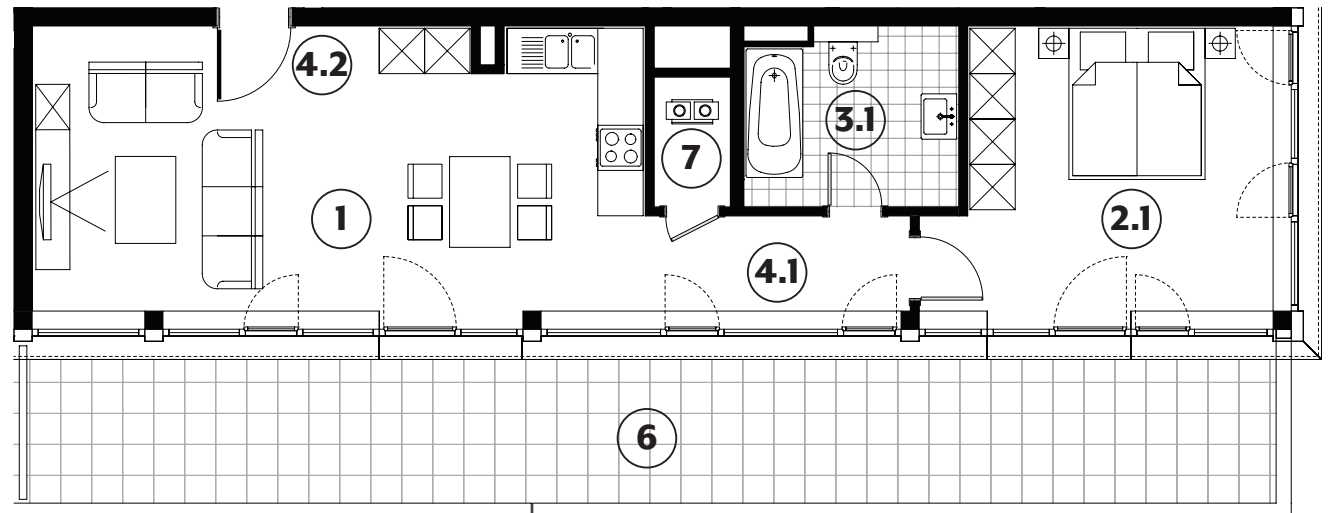
# 212

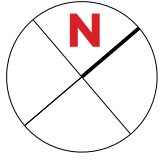


<b>1</b>	séjour/cuisine	<b>26,90m<sup>2</sup></b>
<b>2.1</b>	chambre	<b>16,05m<sup>2</sup></b>
<b>3.1</b>	salle de bains	<b>6,55m<sup>2</sup></b>
<b>4.1</b>	couloir	<b>4,40m<sup>2</sup></b>
<b>4.2</b>	hall	<b>3,40m<sup>2</sup></b>
<b>6</b>	terrasse	<b>32,05m<sup>2</sup></b>
<b>7</b>	technique	<b>1,75m<sup>2</sup></b>

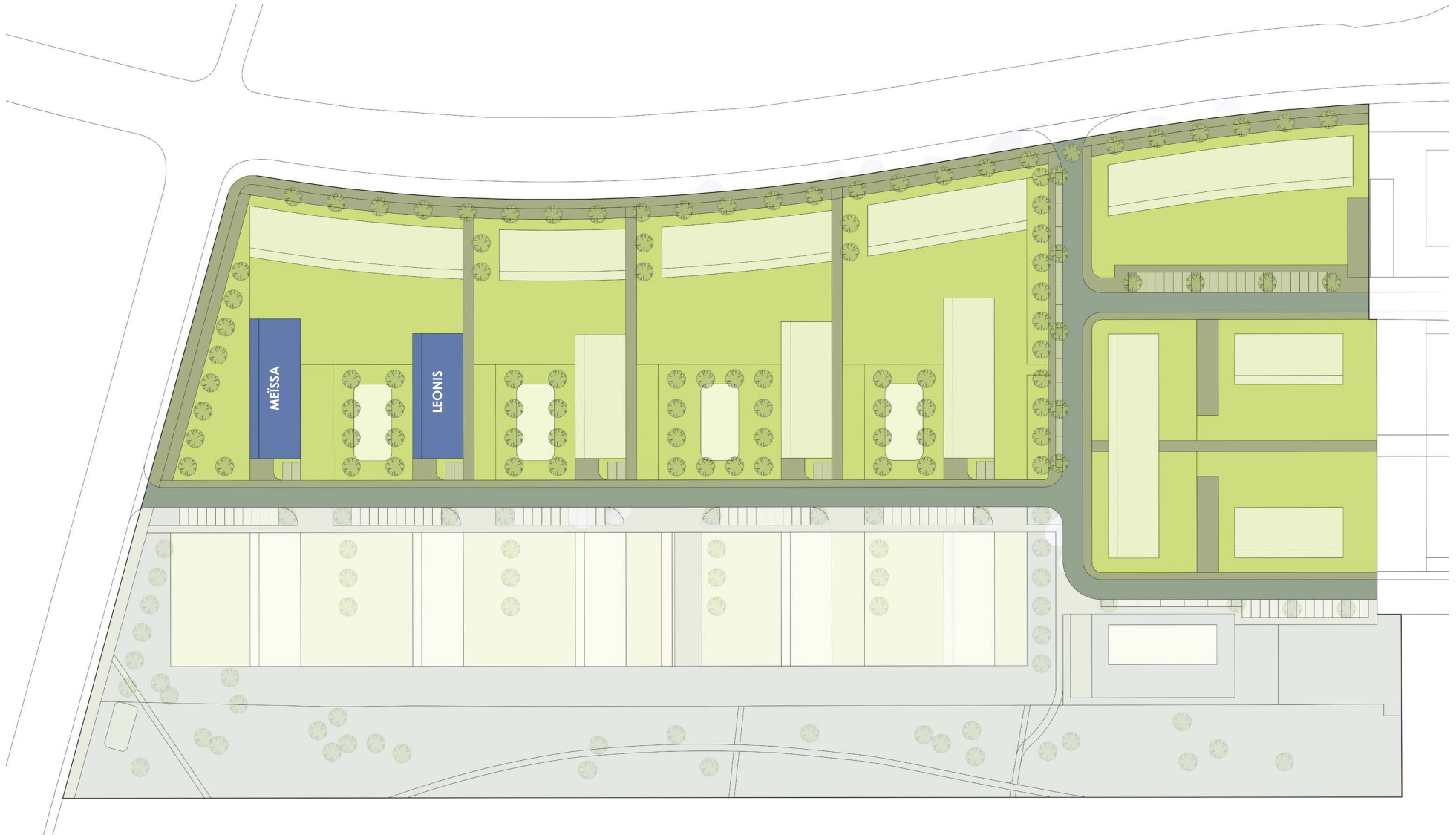
surface habitable

**59,05m<sup>2</sup>**





# IMPLANTATION











© AZMPL image non contractuelle



Société Nationale des  
Habitations à Bon Marché

2b, rue Kalchesbruck  
L-1852 Luxembourg

Carmen Sousa  
Tél. (+352) 448292 - 557  
[carmen.sousa@snhbm.lu](mailto:carmen.sousa@snhbm.lu)

[snhbm.lu](http://snhbm.lu)