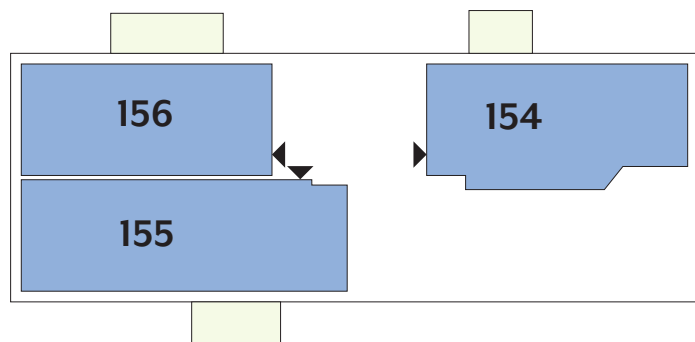
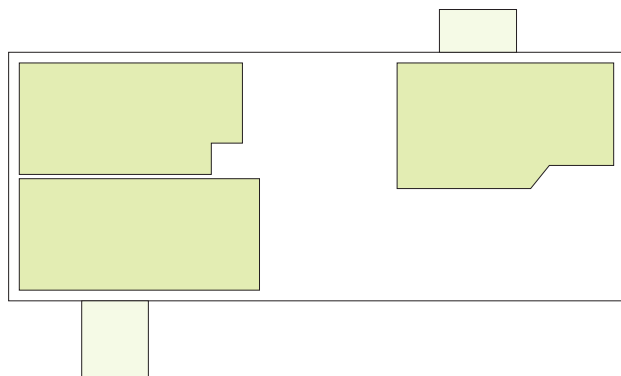


Résidence MEÏSSA



APPARTEMENTS

REZ-DE-CHAUSSÉE

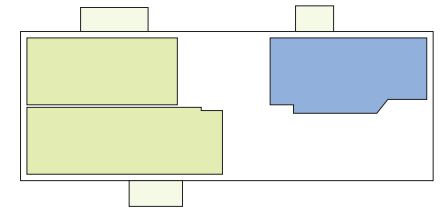
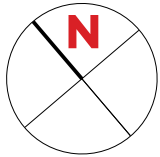


Type	Surface Utile	surface terrasse	surface cave	prix de vente subventionné TVA 3% *
154	95,26m ²	8,00m ²	5,86m ²	317.869 €
155	113,20m ²	12,05m ²	7,44m ²	372.341 €**
156	87,81m ²	12,95m ²	5,68m ²	282.075 €

- les surfaces inscrites dans ce tableau peuvent subir de légères modifications dues aux nécessités techniques de la construction.
- surface utile = surface calculée à l'intérieur des murs extérieurs.
- * primes ACE sont déjà déduites (uniquement pour les acquéreurs bénéficiant d'une prime de construction de l'Etat.)
- ** primes ACE et remboursement TVA sont déjà déduits.

APPARTEMENT TYPE

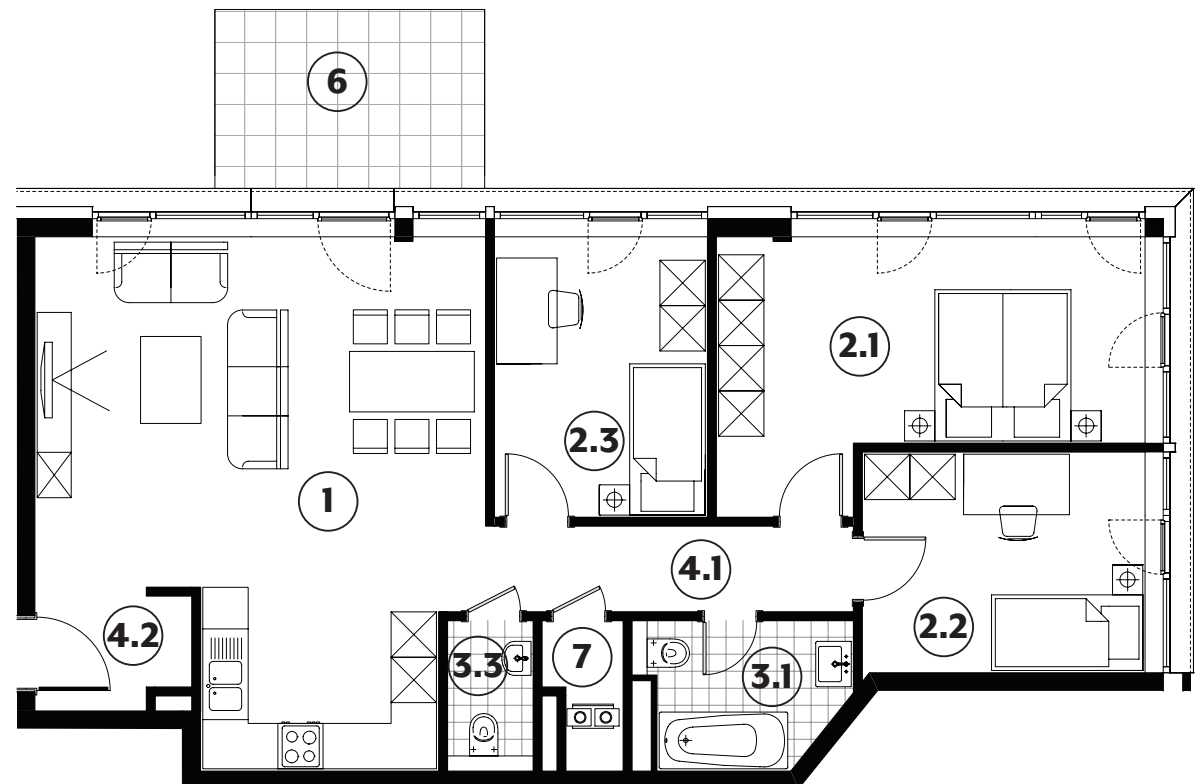
154



1	séjour/cuisine	35,45m²
2.1	chambre	17,25m²
2.2	chambre	10,90m²
2.3	chambre	10,45m²
3.1	salle de bains	5,00m²
3.3	wc	2,25m²
4.1	couloir	5,50m²
4.2	hall	3,15m²
6	terrasse	8,00m²
7	technique	1,80m²

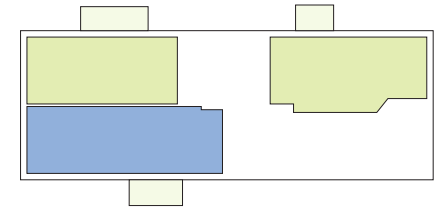
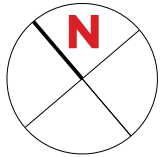
surface habitable

91,75m²



APPARTEMENT TYPE

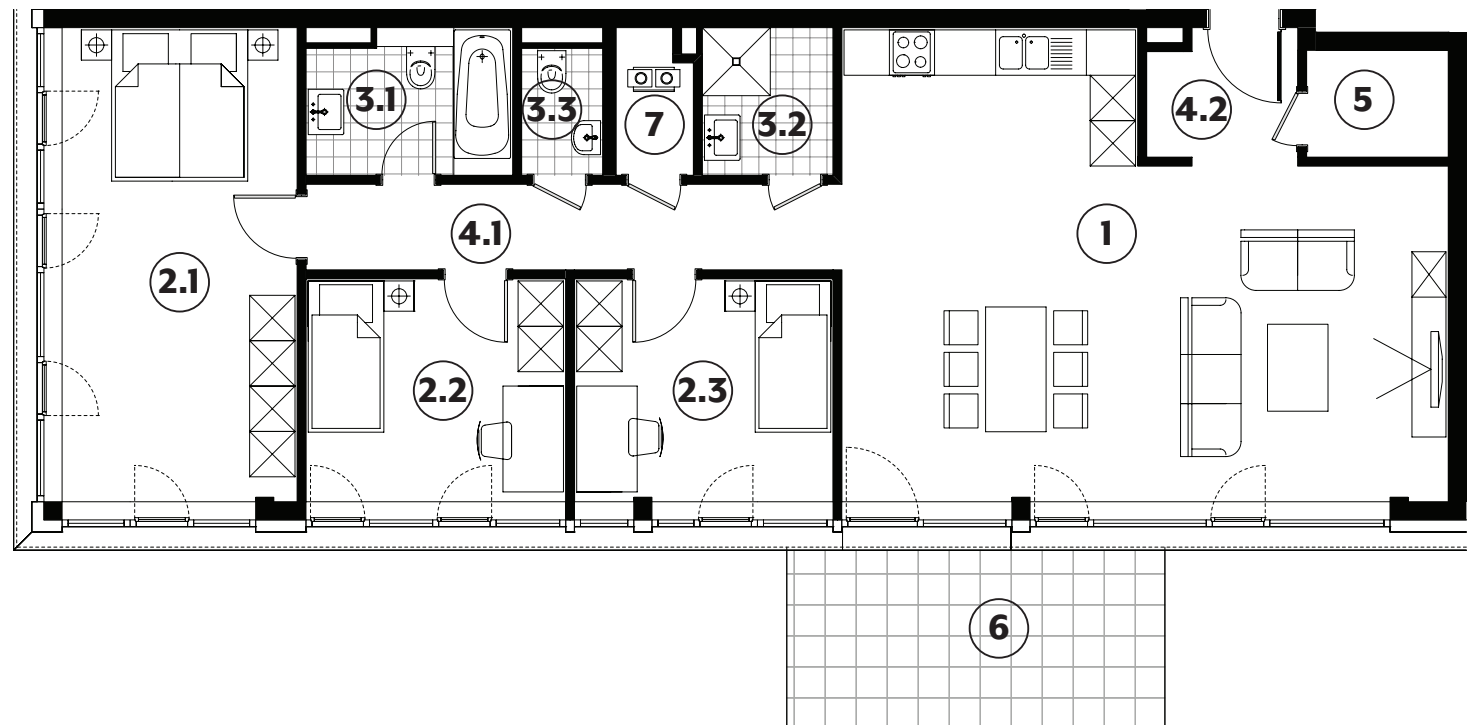
155



1	séjour/cuisine	42,75m²
2.1	chambre	19,50m²
2.2	chambre	10,15m²
2.3	chambre	10,05m²
3.1	salle de bains	5,10m²
3.2	salle de douche	3,40m²
3.3	wc	1,80m²
4.1	couloir	8,05m²
4.2	hall	3,40m²
5	débarras	2,65m²
6	terrasse	12,05m²
7	technique	1,90m²

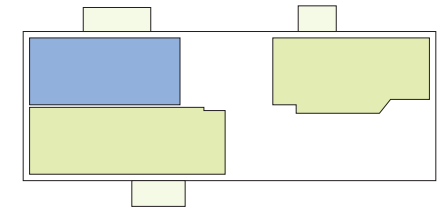
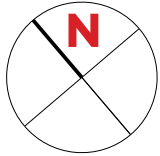
surface habitable

108,75m²



APPARTEMENT TYPE

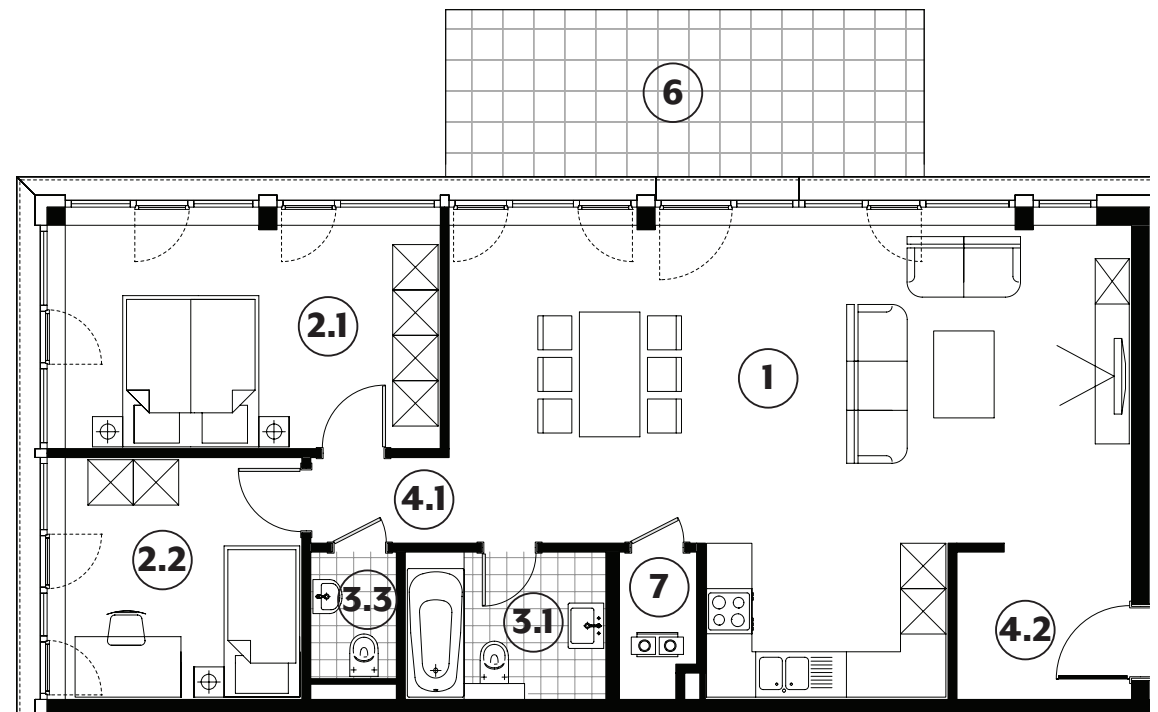
156



1	séjour/cuisine	44,55m²
2.1	chambre	14,65m²
2.2	chambre	10,00m²
3.1	salle de bains	5,20m²
3.3	wc	1,90m²
4.1	couloir	2,10m²
4.2	hall	4,70m²
6	terrasse	12,95m²
7	technique	1,85m²

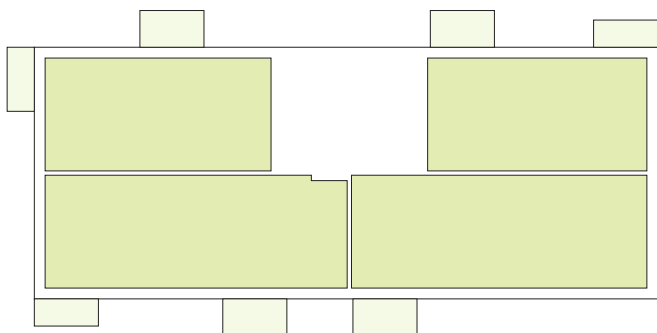
surface habitable

84,95m²



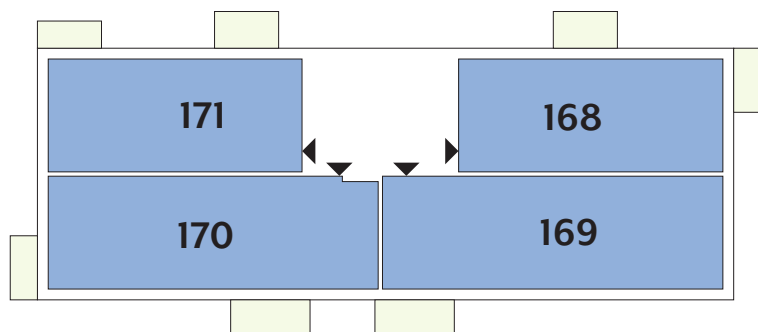
APPARTEMENTS

1 ETAGE



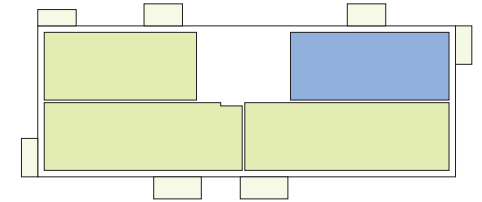
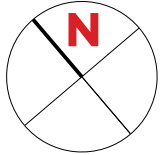
Type	Surface Utile	surface terrasse	surface cave	prix de vente subventionné TVA 3% *
168	90,82m ²	10,75m ²	5,68m ²	295.629 €
169	117,23m ²	7,85m ²	8,06m ²	415.804 €**
170	112,69m ²	12,35m ²	6,98m ²	383.333 €**
171	87,21m ²	10,75m ²	5,56m ²	287.881 €

- les surfaces inscrites dans ce tableau peuvent subir de légères modifications dues aux nécessités techniques de la construction.
- surface utile = surface calculée à l'intérieur des murs extérieurs.
- * primes ACE sont déjà déduites (uniquement pour les acquéreurs bénéficiant d'une prime de construction de l'État.)
- ** primes ACE et remboursement TVA sont déjà déduits.



APPARTEMENT TYPE

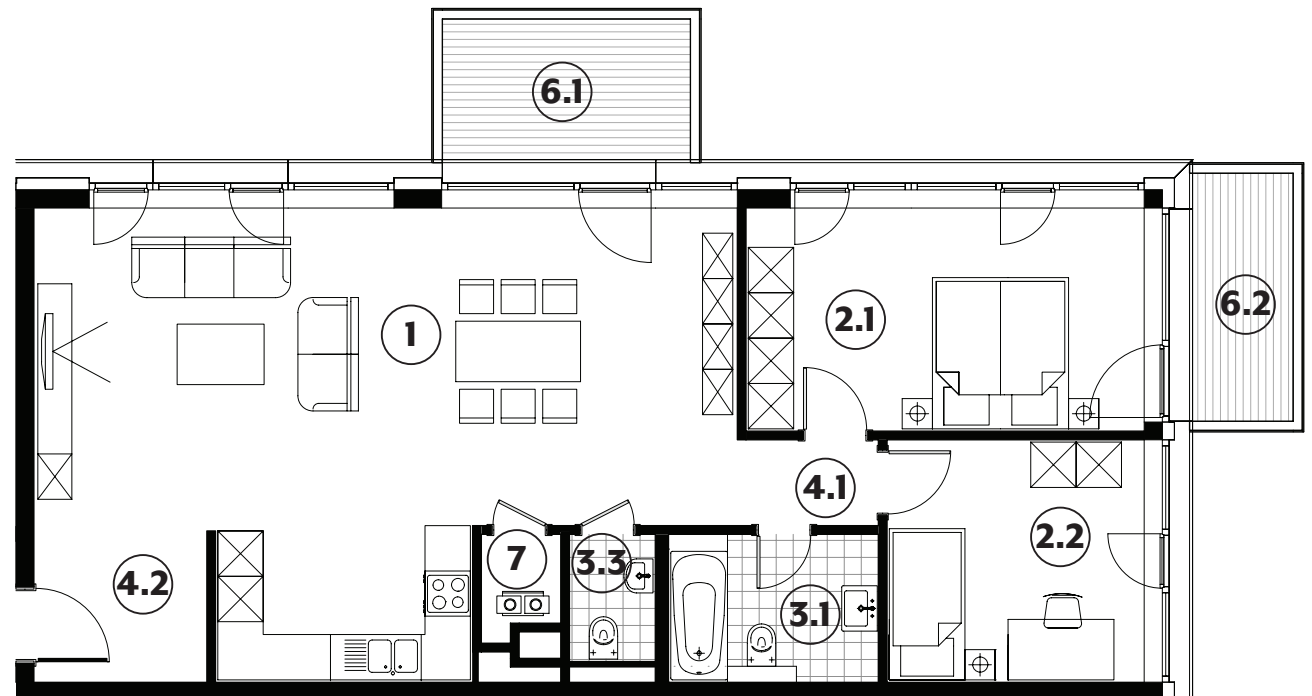
168



1	séjour/cuisine	46,25m²
2.1	chambre	15,55m²
2.2	chambre	10,90m²
3.1	salle de bains	5,45m²
3.3	wc	1,90m²
4.1	couloir	2,10m²
4.2	hall	4,55m²
6.1	balcon	6,25m²
6.2	balcon	4,50m²
7	technique	1,35m²

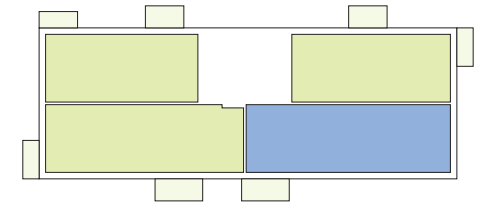
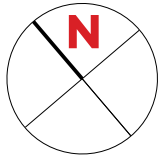
surface habitable

88,05m²



APPARTEMENT TYPE

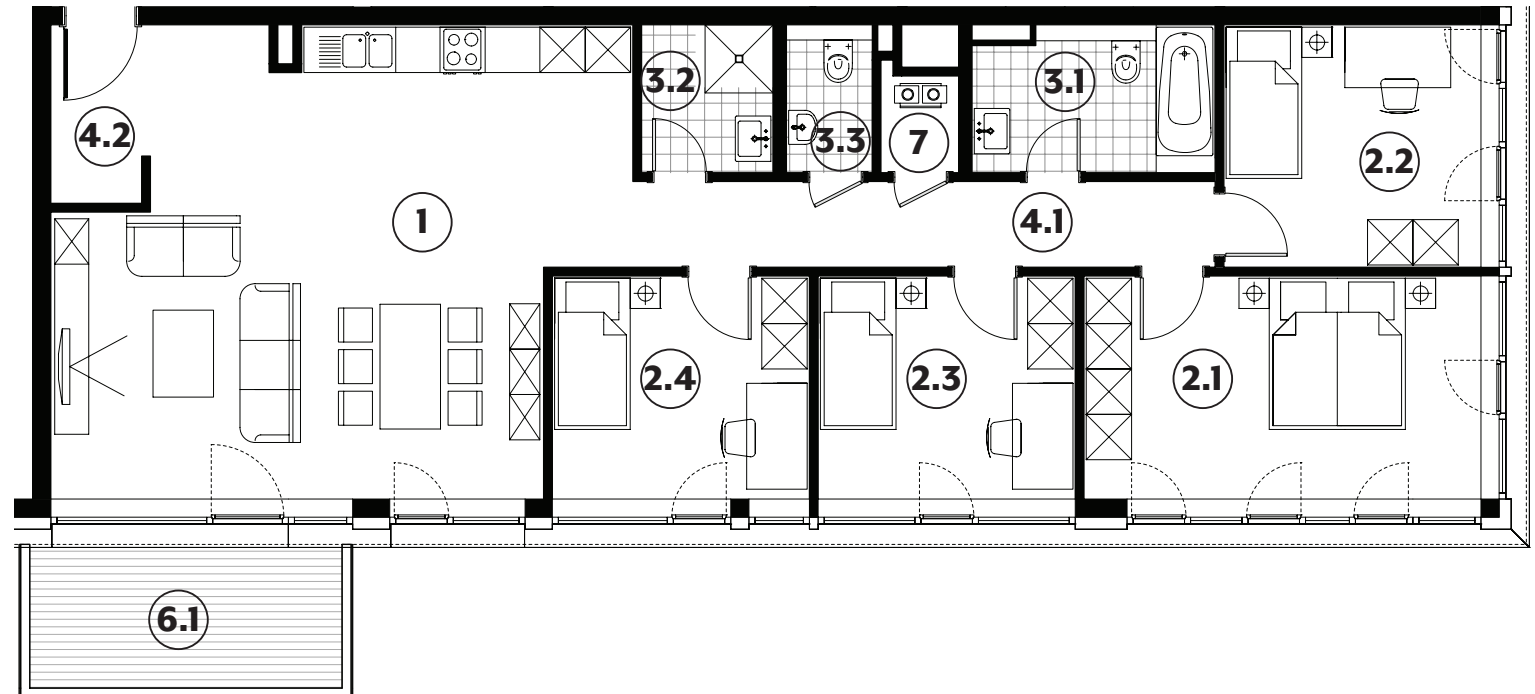
169



1	séjour/cuisine	41,10m²
2.1	chambre	15,50m²
2.2	chambre	10,90m²
2.3	chambre	10,05m²
2.4	chambre	10,05m²
3.1	salle de bains	6,05m²
3.2	salle de douche	3,40m²
3.3	wc	2,20m²
4.1	couloir	8,75m²
4.2	hall	3,05m²
6.1	balcon	7,85m²
7	technique	1,35m²

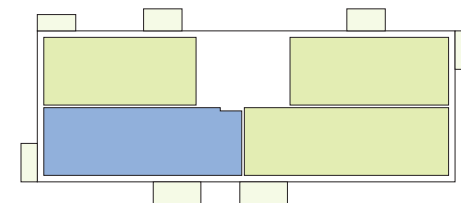
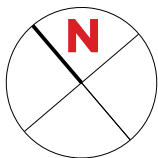
surface habitable

112,40m²



APPARTEMENT TYPE

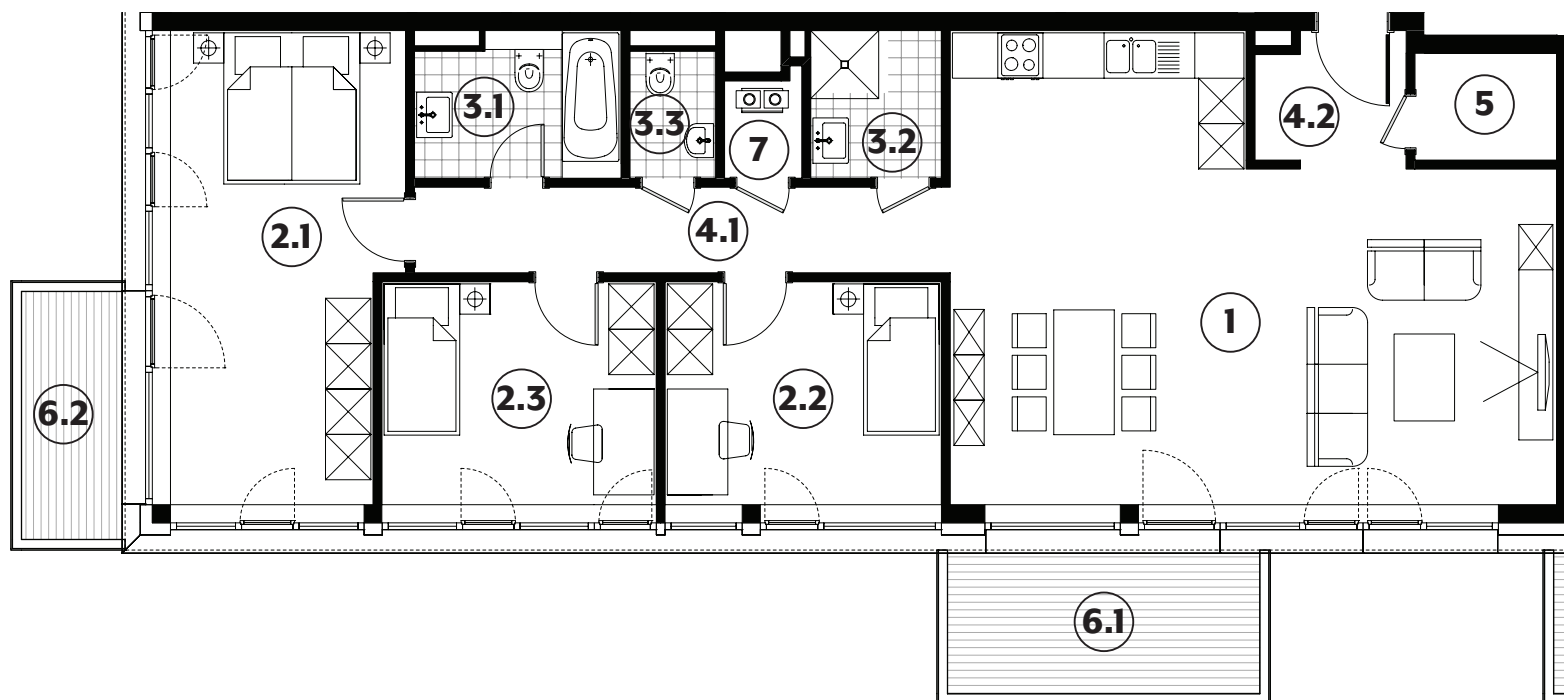
170



1	séjour/cuisine	42,75m²
2.1	chambre	18,20m²
2.2	chambre	10,80m²
2.3	chambre	10,70m²
3.1	salle de bains	5,10m²
3.2	salle de douche	3,40m²
3.3	wc	1,90m²
4.1	couloir	8,05m²
4.2	hall	3,40m²
5	débarras	2,65m²
6.1	balcon	7,85m²
6.2	balcon	4,50m²
7	technique	1,30m²

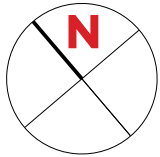
surface habitable

108,25m²



APPARTEMENT TYPE

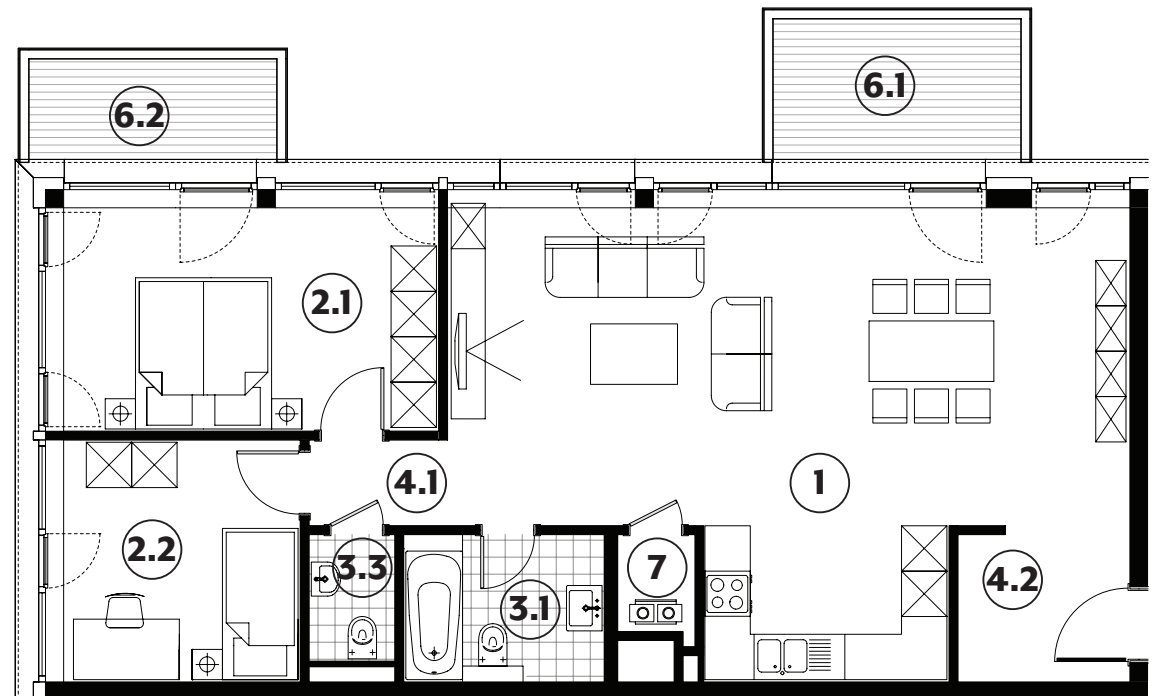
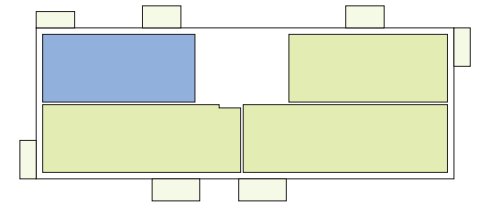
171



1	séjour/cuisine	44,65m²
2.1	chambre	14,65m²
2.2	chambre	10,00m²
3.1	salle de bains	5,20m²
3.3	wc	1,90m²
4.1	couloir	2,10m²
4.2	hall	4,65m²
6.1	balcon	6,25m²
6.2	balcon	4,50m²
7	technique	1,30m²

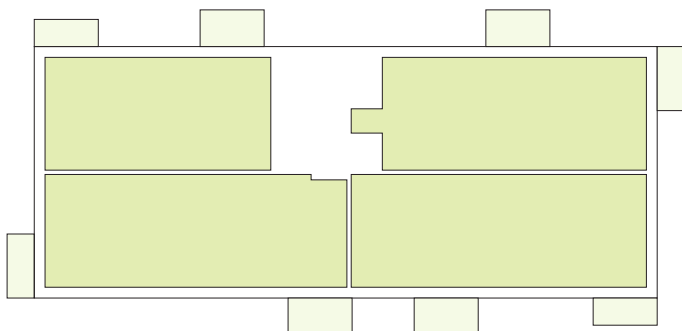
surface habitable

84,45m²



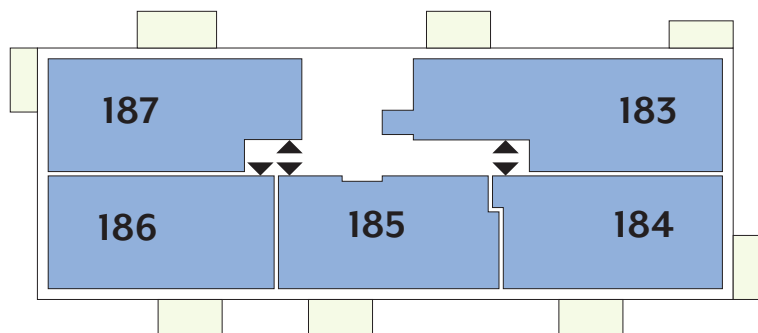
APPARTEMENTS

2 ETAGE



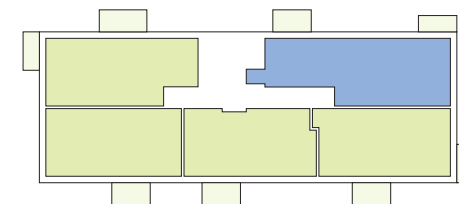
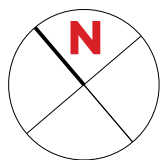
Type	Surface Utile	surface terrasse	surface cave	prix de vente subventionné TVA 3% *
183	97,48m ²	10,75m ²	5,86m ²	314.866 €
184	76,26m ²	10,75m ²	5,18m ²	278.341 €
185	74,51m ²	6,25m ²	5,22m ²	269.585 €
186	77,33m ²	6,25m ²	5,58m ²	275.773 €
187	81,53m ²	12,35m ²	5,53m ²	281.641 €

- les surfaces inscrites dans ce tableau peuvent subir de légères modifications dues aux nécessités techniques de la construction.
- surface utile = surface calculée à l'intérieur des murs extérieurs.
- * primes ACE sont déjà déduites (uniquement pour les acquéreurs bénéficiant d'une prime de construction de l'Etat.)
- ** primes ACE et remboursement TVA sont déjà déduits.



APPARTEMENT TYPE

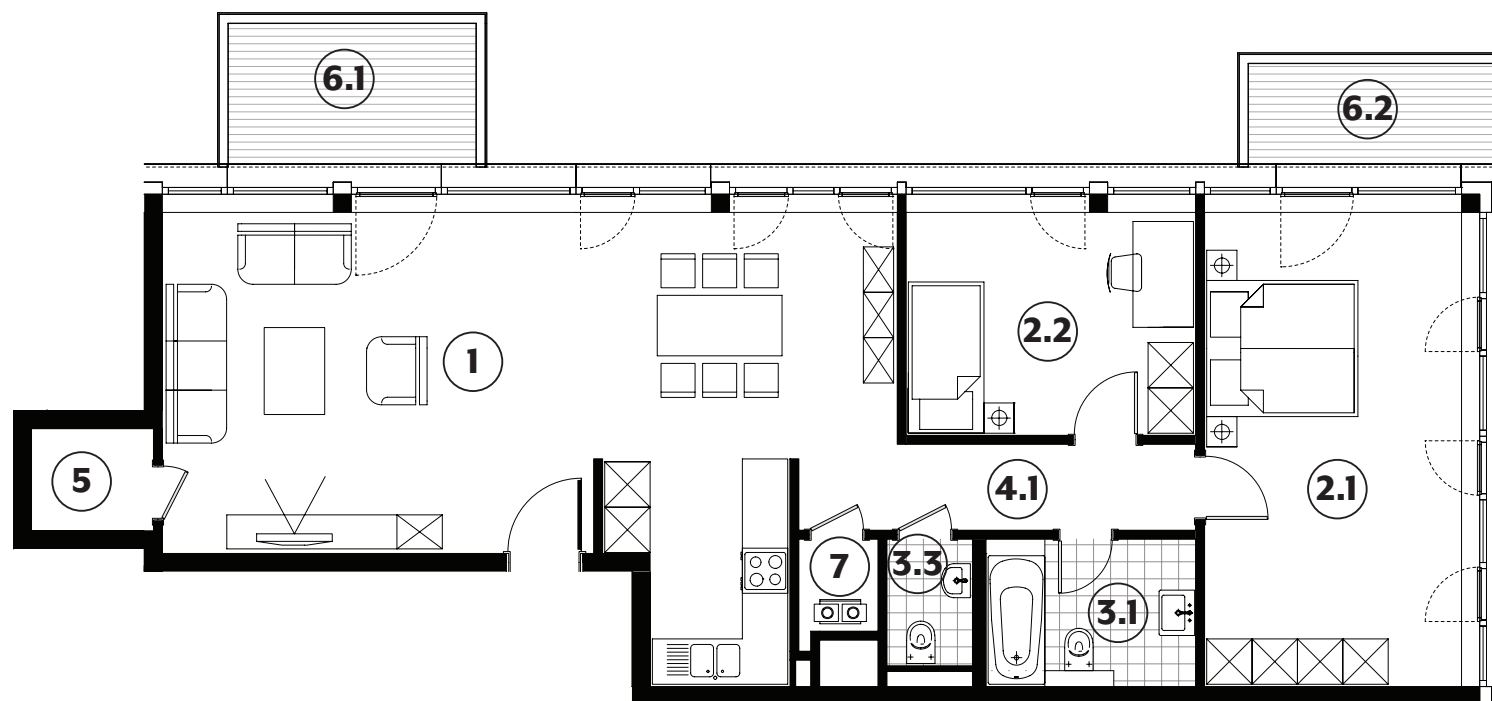
183



1	séjour/cuisine	44,90m²
2.1	chambre	21,30m²
2.2	chambre	11,30m²
3.1	salle de bains	5,40m²
3.3	wc	1,90m²
4.1	couloir	6,00m²
5	débarras	2,20m²
6.1	balcon	6,25m²
6.2	balcon	4,50m²
7	technique	1,30m²

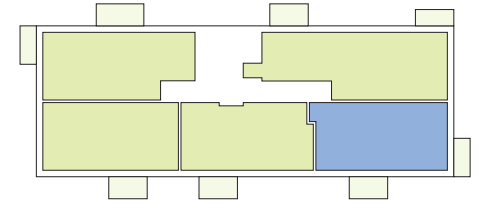
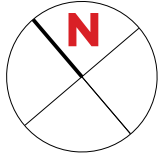
surface habitable

94,30m²



APPARTEMENT TYPE

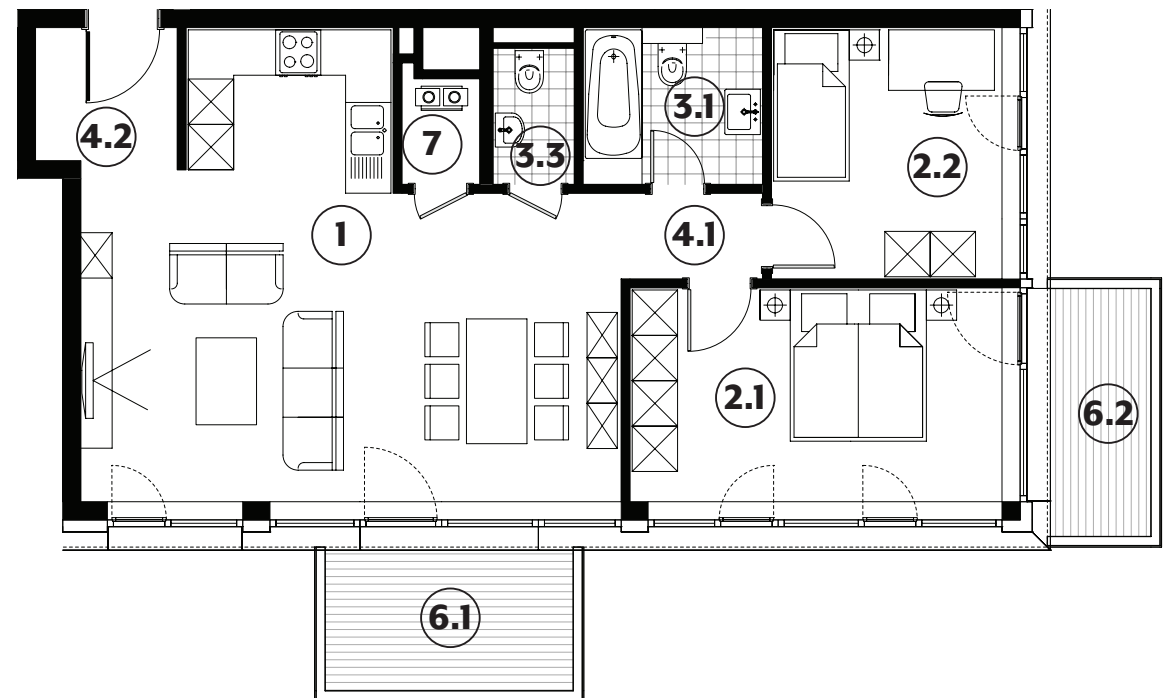
184



1	séjour/cuisine	35,60m²
2.1	chambre	13,90m²
2.2	chambre	10,15m²
3.1	salle de bains	4,95m²
3.3	wc	1,95m²
4.1	couloir	2,10m²
4.2	hall	3,45m²
6.1	balcon	6,25m²
6.2	balcon	4,50m²
7	technique	1,45m²

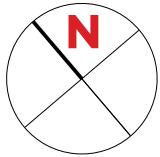
surface habitable

73,55m²



APPARTEMENT TYPE

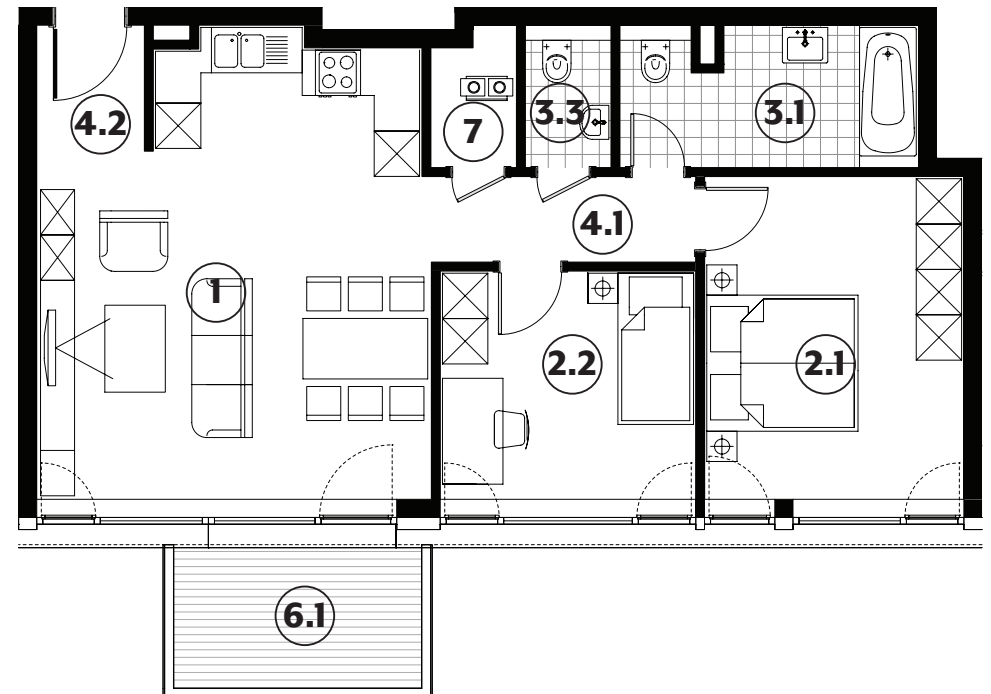
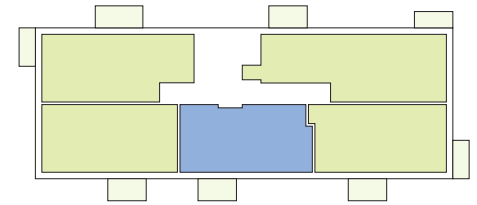
185



1	séjour/cuisine	29,25m²
2.1	chambre	14,65m²
2.2	chambre	10,20m²
3.1	salle de bains	7,15m²
3.3	wc	2,15m²
4.1	couloir	3,95m²
4.2	hall	2,35m²
6.1	balcon	6,25m²
7	technique	1,95m²

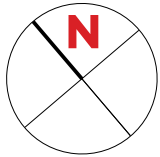
surface habitable

71,65m²



APPARTEMENT TYPE

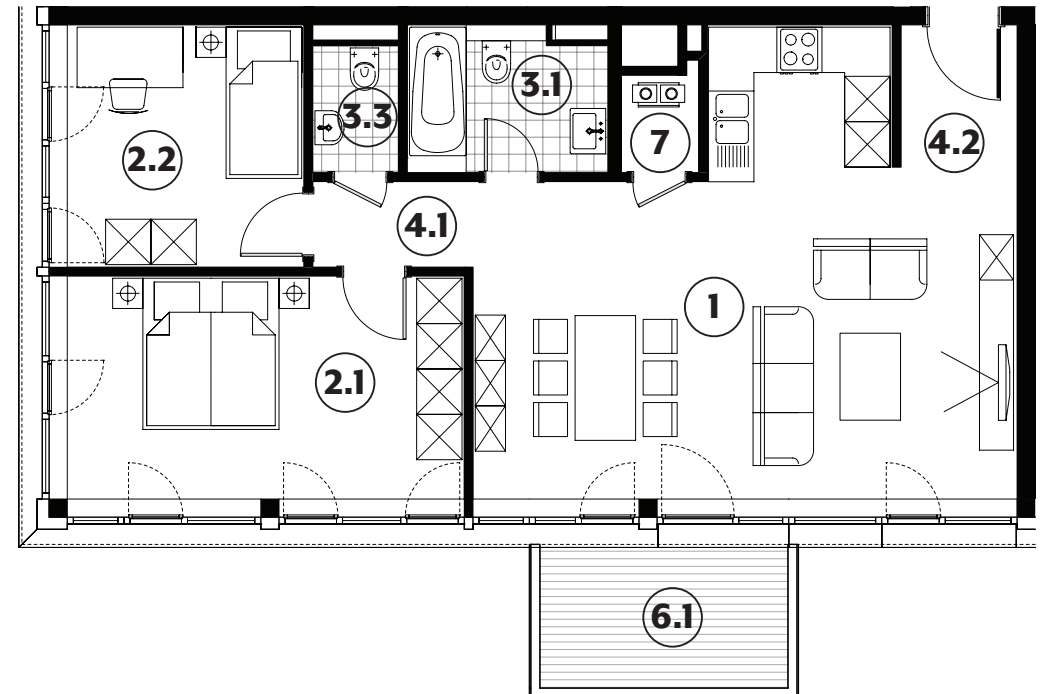
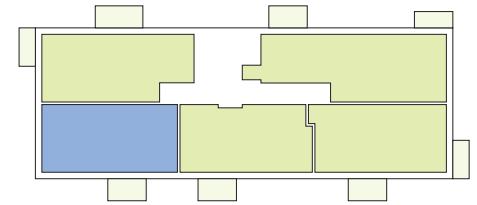
186



1	séjour/cuisine	35,60m²
2.1	chambre	15,50m²
2.2	chambre	10,05m²
3.1	salle de bains	5,10m²
3.3	wc	1,90m²
4.1	couloir	2,40m²
4.2	hall	2,90m²
6.1	balcon	6,25m²
7	technique	1,30m²

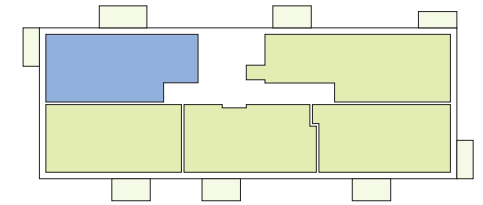
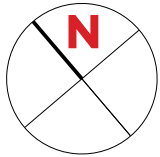
surface habitable

74,75m²



APPARTEMENT TYPE

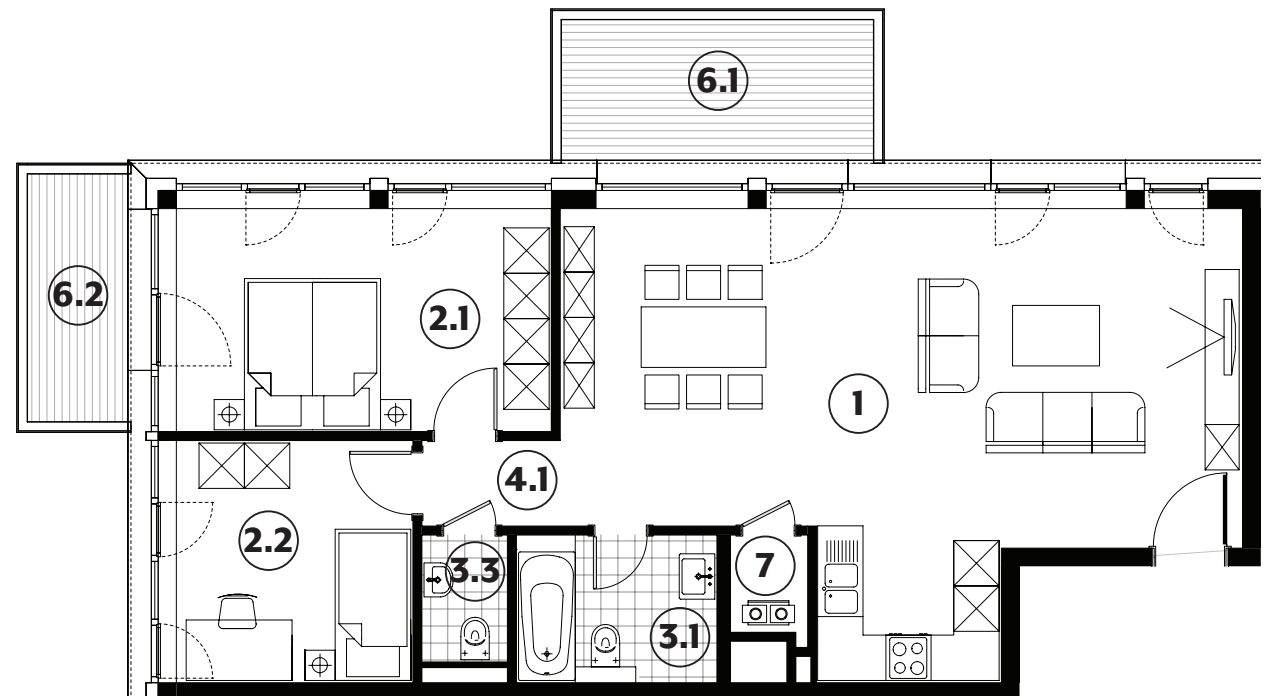
187



1	séjour/cuisine	43,90m²
2.1	chambre	14,65m²
2.2	chambre	10,05m²
3.1	salle de bains	5,20m²
3.3	wc	1,90m²
4.1	couloir	2,10m²
6.1	balcon	7,85m²
6.2	balcon	4,50m²
7	technique	1,30m²

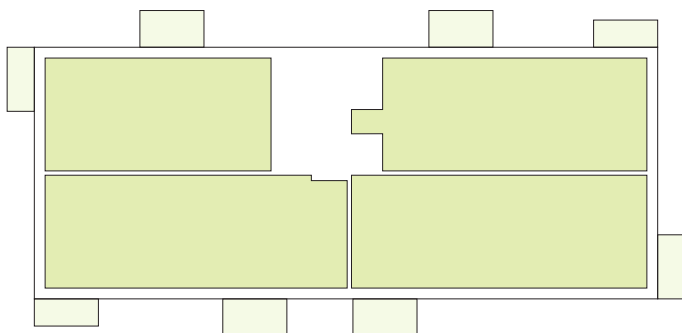
surface habitable

79,10m²



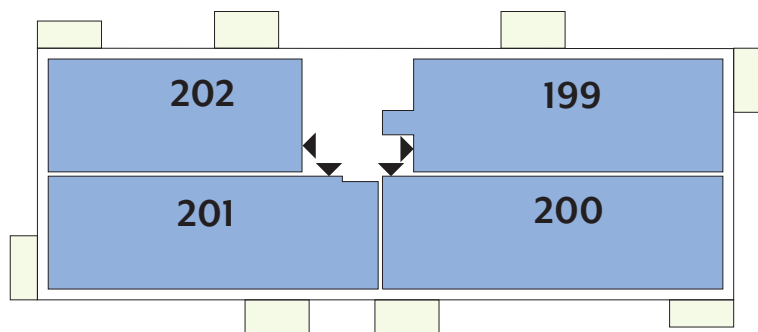
APPARTEMENTS

3 ETAGE



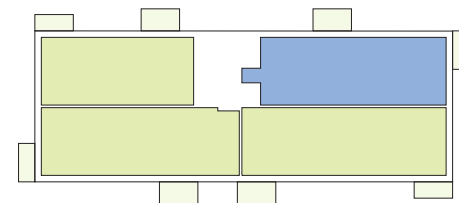
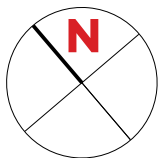
Type	Surface Utile	surface terrasse	surface cave	prix de vente subventionné TVA 3% *
199	108,64m ²	10,75m ²	6,13m ²	372.282 €**
200	116,99m ²	10,75m ²	8,14m ²	431.806 €**
201	111,72m ²	10,75m ²	6,71m ²	391.529 €**
202	86,94m ²	10,75m ²	5,68m ²	296.002 €

- les surfaces inscrites dans ce tableau peuvent subir de légères modifications dues aux nécessités techniques de la construction.
- surface utile = surface calculée à l'intérieur des murs extérieurs.
- * primes ACE sont déjà déduites (uniquement pour les acquéreurs bénéficiant d'une prime de construction de l'État.)
- ** primes ACE et remboursement TVA sont déjà déduits.



APPARTEMENT TYPE

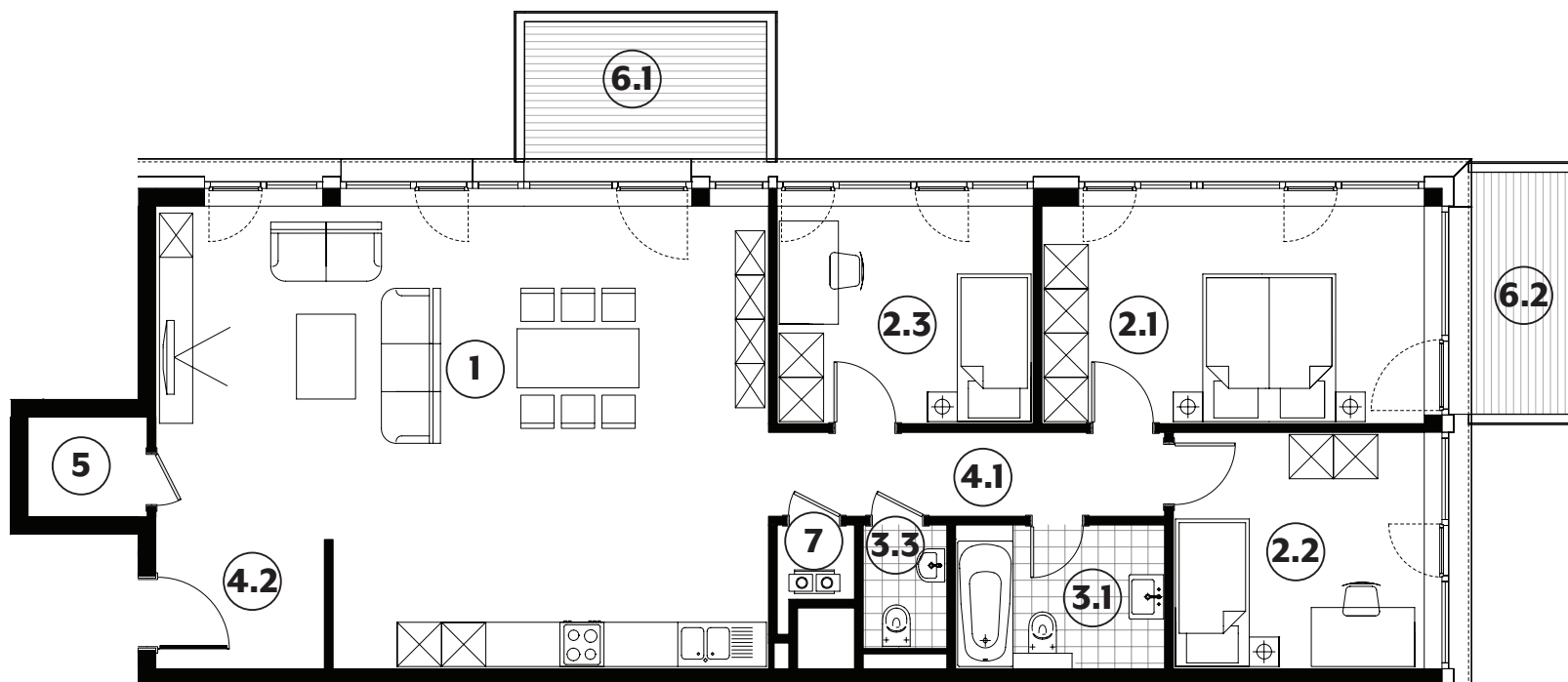
199



1	séjour/cuisine	47,85m²
2.1	chambre	15,30m²
2.2	chambre	10,90m²
2.3	chambre	10,25m²
3.1	salle de bains	5,55m²
3.3	wc	1,90m²
4.1	couloir	6,10m²
4.2	hall	4,00m²
5	débarras	2,20m²
6.1	balcon	6,25m²
6.2	balcon	4,50m²
7	technique	1,05m²

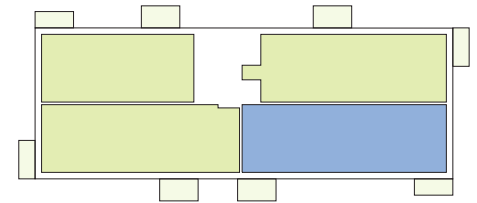
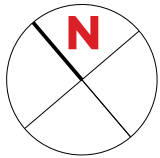
surface habitable

105,10m²



APPARTEMENT TYPE

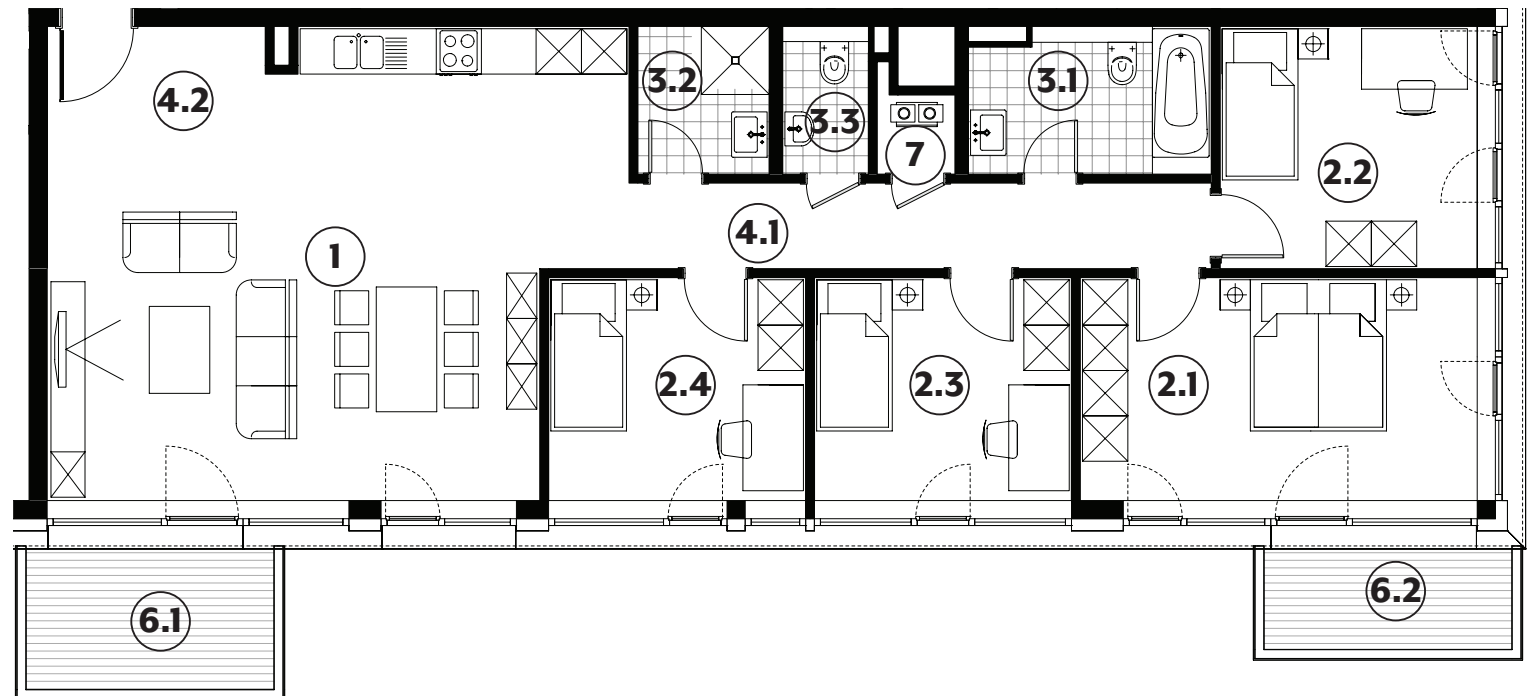
200



1	séjour/cuisine	42,05m²
2.1	chambre	15,50m²
2.2	chambre	10,90m²
2.3	chambre	10,05m²
2.4	chambre	10,05m²
3.1	salle de bains	6,05m²
3.2	salle de douche	3,40m²
3.3	wc	2,20m²
4.1	couloir	8,75m²
4.2	hall	2,30m²
6.1	balcon	6,25m²
6.2	balcon	4,50m²
7	technique	1,10m²

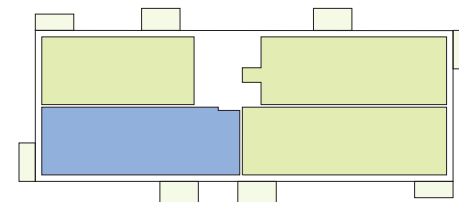
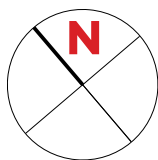
surface habitable

112,35m²



APPARTEMENT TYPE

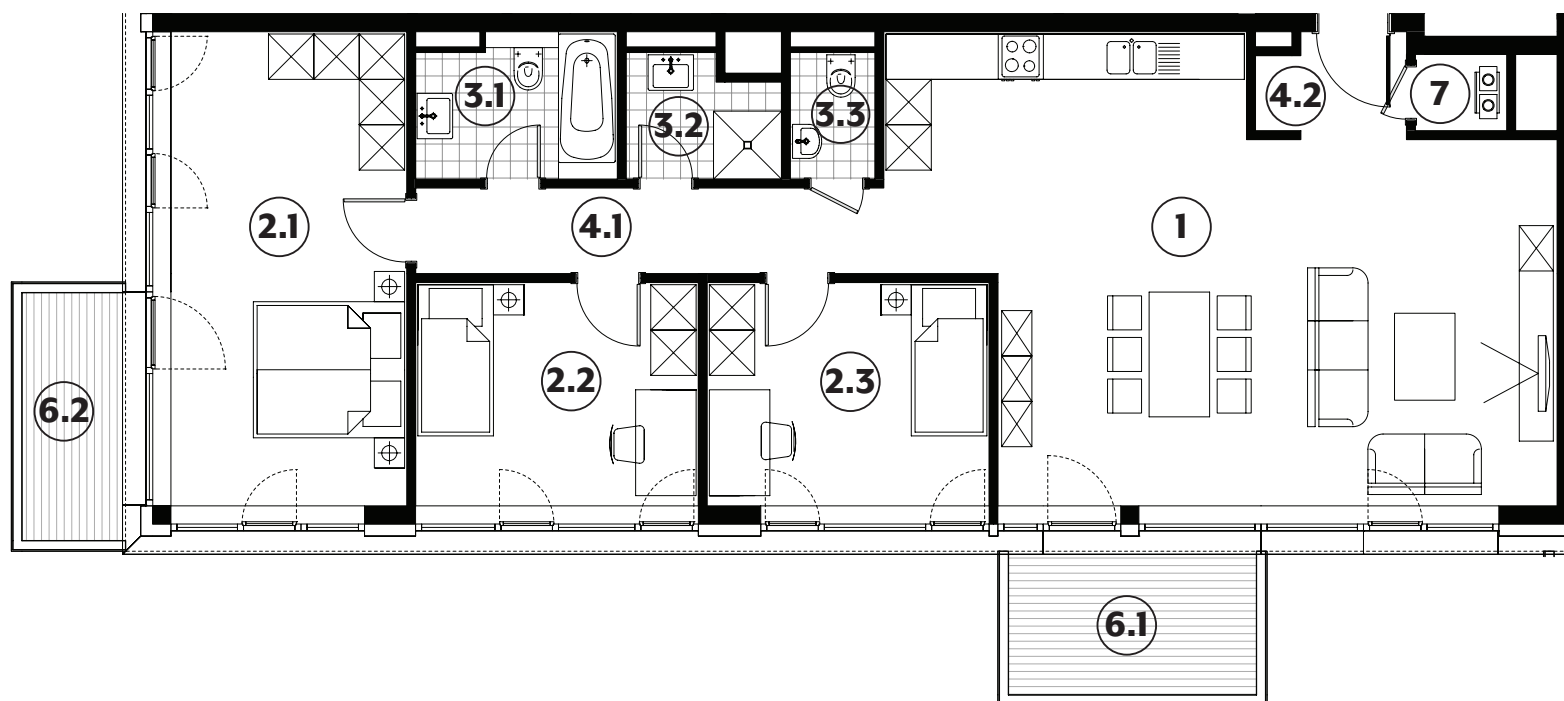
201



1	séjour/cuisine	45,35m²
2.1	chambre	19,55m²
2.2	chambre	11,05m²
2.3	chambre	11,00m²
3.1	salle de bains	4,95m²
3.2	salle de douche	3,10m²
3.3	wc	1,90m²
4.1	couloir	7,05m²
4.2	hall	2,60m²
6.1	balcon	6,25m²
6.2	balcon	4,50m²
7	technique	1,20m²

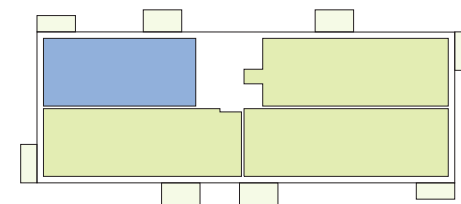
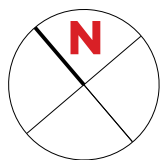
surface habitable

107,75m²



APPARTEMENT TYPE

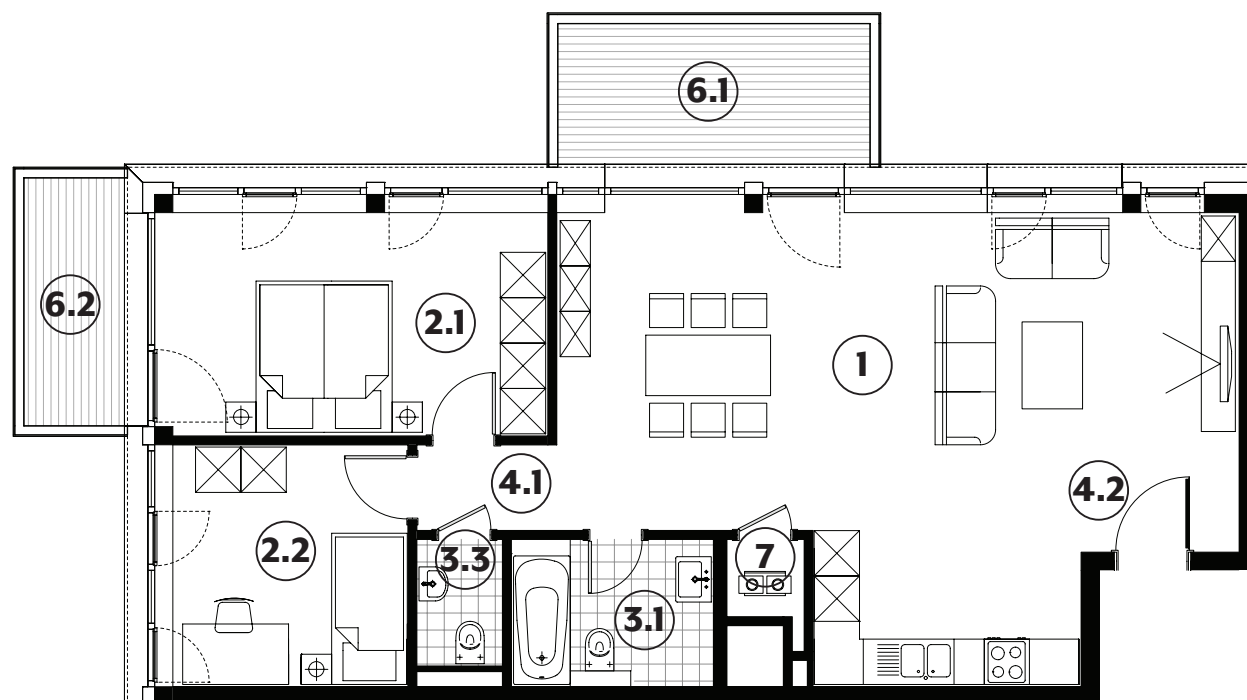
202



1	séjour/cuisine	44,60m²
2.1	chambre	14,65m²
2.2	chambre	10,00m²
3.1	salle de bains	5,20m²
3.3	wc	1,90m²
4.1	couloir	2,10m²
4.2	hall	4,70m²
6.1	balcon	6,25m²
6.2	balcon	4,50m²
7	technique	1,05m²

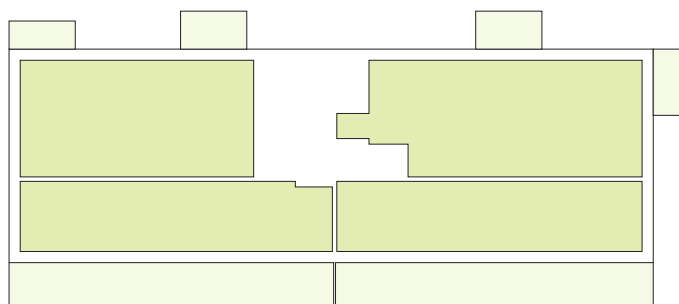
surface habitable

84,20m²



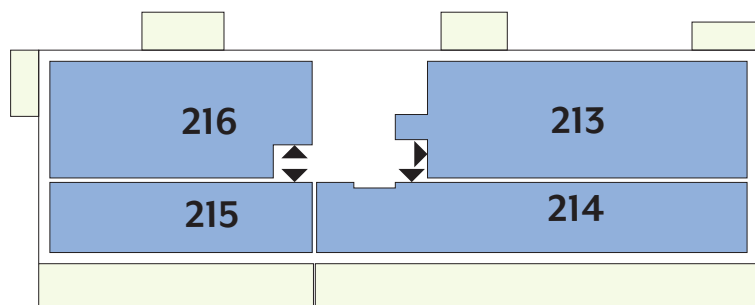
APPARTEMENTS

4 ETAGE



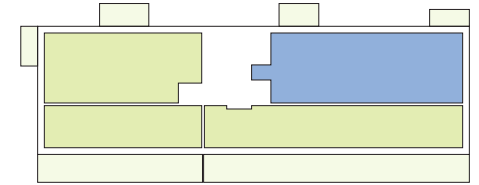
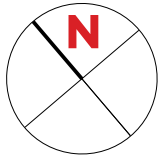
Type	Surface Utile	surface terrasse	surface cave	prix de vente subventionné TVA 3% *
213	108,62m ²	10,75m ²	5,86m ²	377.243 €**
214	83,72m ²	45,10m ²	5,63m ²	318.552 €
215	51,75m ²	27,55m ²	4,73m ²	222.029 €
216	83,22m ²	12,35m ²	5,68m ²	292.942 €

- les surfaces inscrites dans ce tableau peuvent subir de légères modifications dues aux nécessités techniques de la construction.
- surface utile = surface calculée à l'intérieur des murs extérieurs.
- * primes ACE sont déjà déduites (uniquement pour les acquéreurs bénéficiant d'une prime de construction de l'Etat.)
- ** primes ACE et remboursement TVA sont déjà déduits.



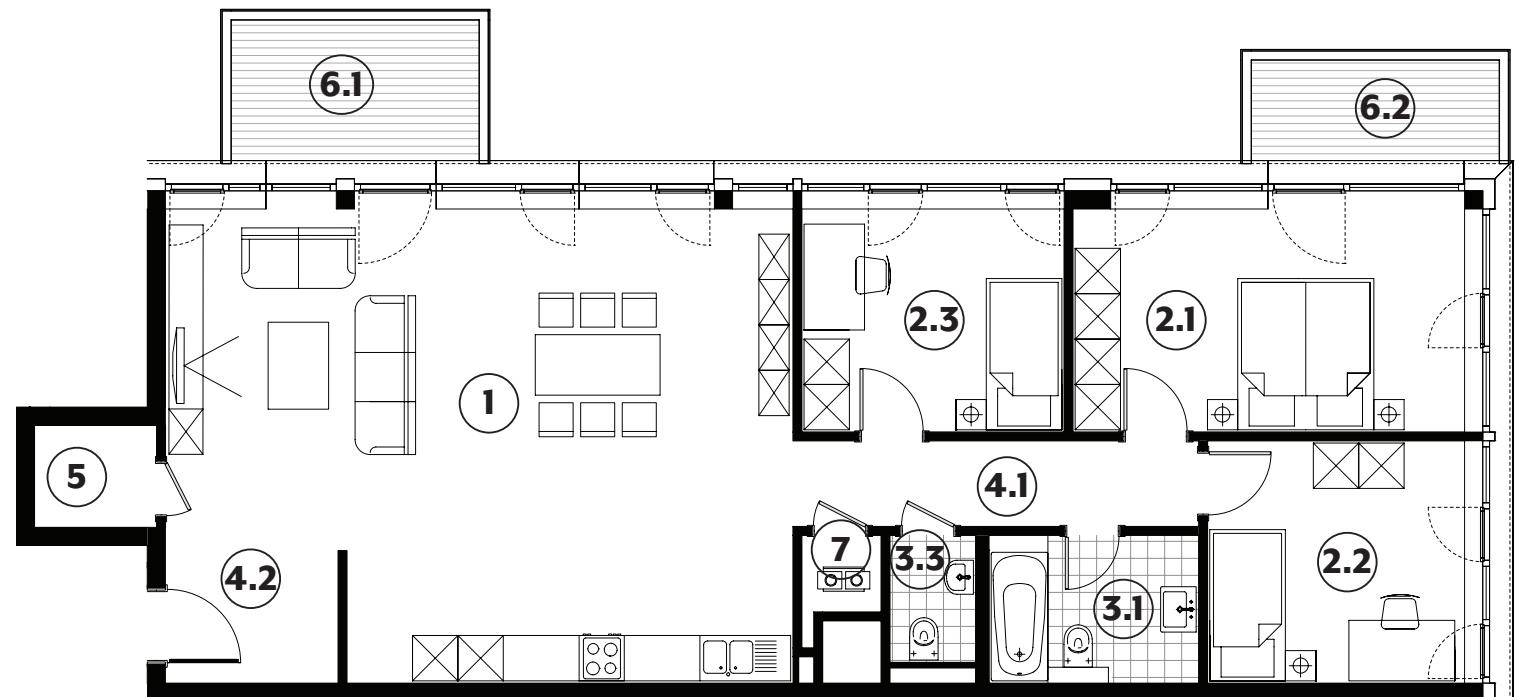
APPARTEMENT TYPE

213



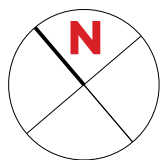
1	séjour/cuisine	47,85m²
2.1	chambre	15,30m²
2.2	chambre	10,90m²
2.3	chambre	10,25m²
3.1	salle de bains	5,45m²
3.3	wc	1,90m²
4.1	couloir	6,10m²
4.2	hall	4,00m²
5	débarras	2,20m²
6.1	balcon	6,25m²
6.2	balcon	4,50m²
7	technique	1,05m²

surface habitable
105,00m²



APPARTEMENT TYPE

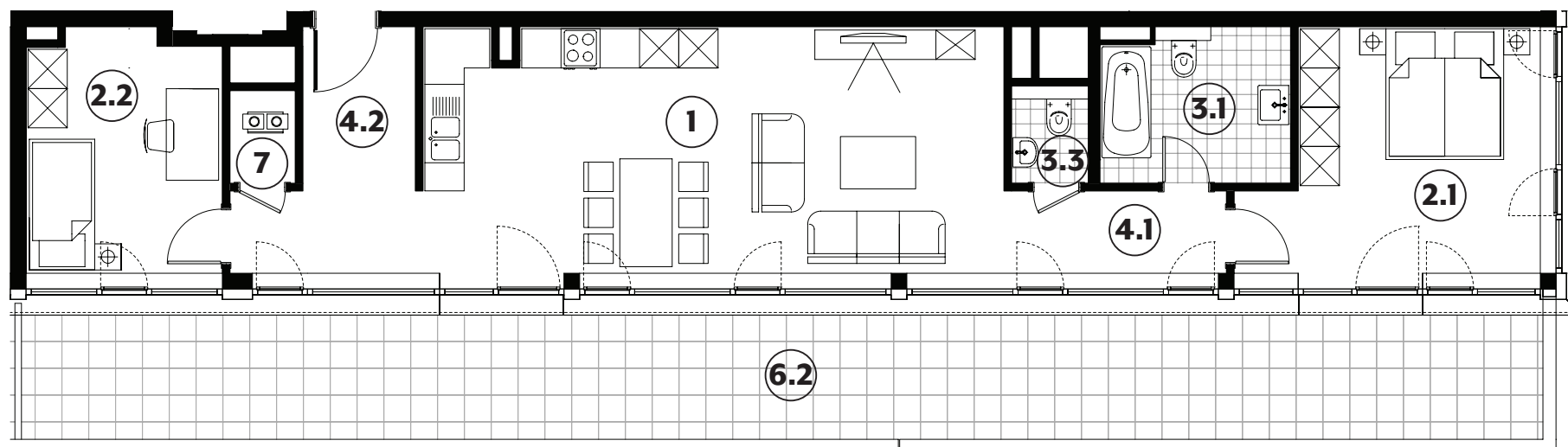
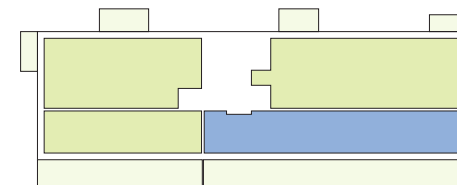
214



1	séjour/cuisine	36,90m²
2.1	chambre	15,20m²
2.2	chambre	10,80m²
3.1	salle de bains	6,75m²
3.3	wc	1,75m²
4.1	couloir	4,30m²
4.2	hall	4,30m²
6.2	terrasse	45,10m²
7	technique	1,40m²

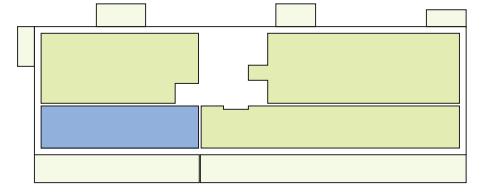
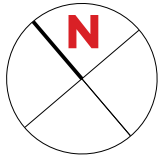
surface habitable

81,40m²



APPARTEMENT TYPE

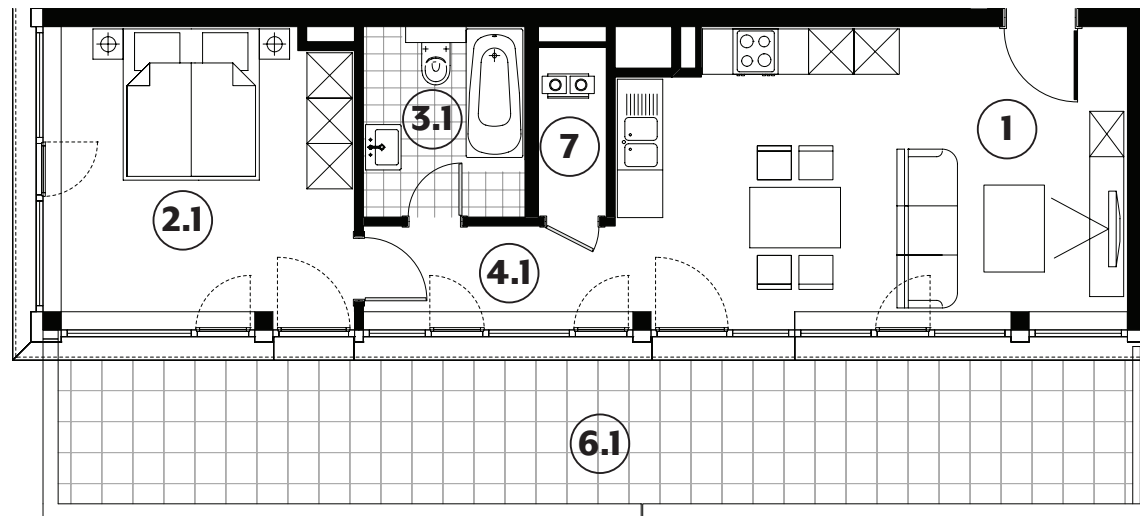
215



1	séjour/cuisine	24,80m²
2.1	chambre	14,40m²
3.1	salle de bains	5,40m²
4.1	couloir	3,80m²
6.2	terrasse	27,55m²
7	technique	2,00m²

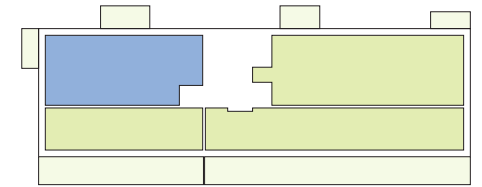
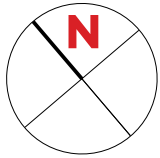
surface habitable

50,40m²



APPARTEMENT TYPE

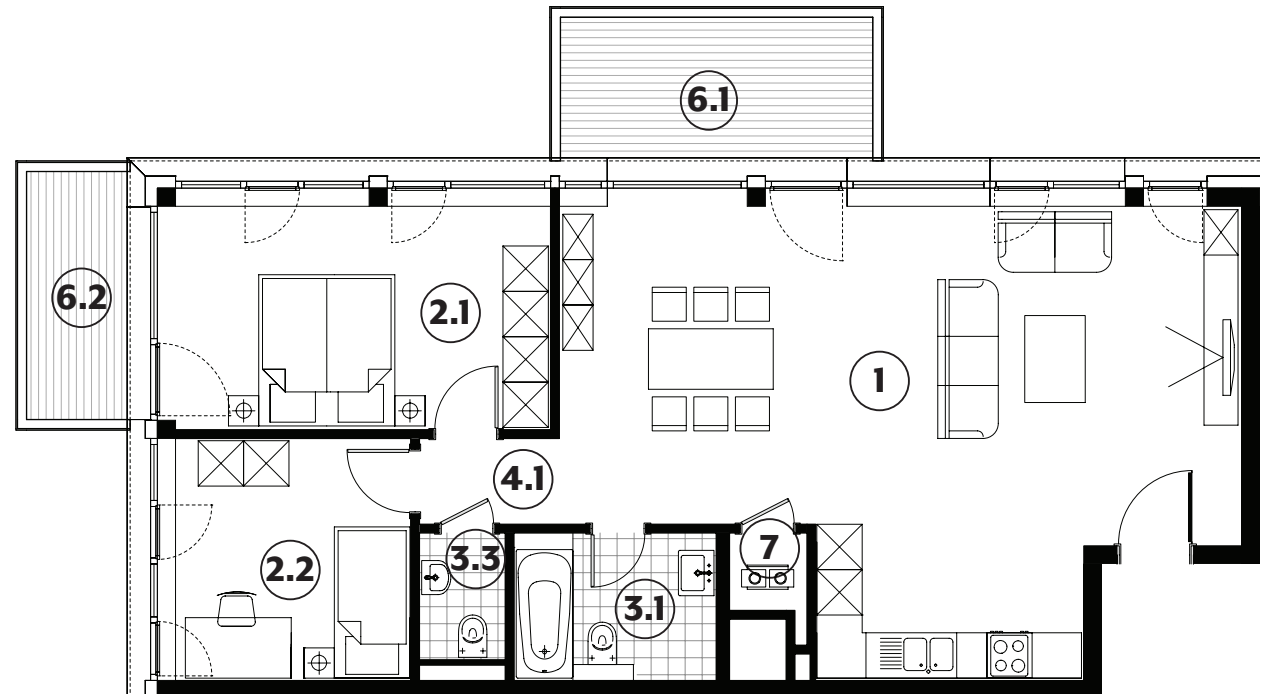
216

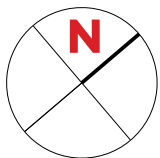


1	séjour/cuisine	45,90m²
2.1	chambre	14,65m²
2.2	chambre	9,95m²
3.1	salle de bains	5,20m²
3.3	wc	1,90m²
4.1	couloir	2,10m²
6.1	balcon	7,85m²
6.2	balcon	4,50m²
7	technique	1,05m²

surface habitable

80,75m²





IMPLANTATION





© AZMPL image non contractuelle



Société Nationale des
Habitations à Bon Marché

2b, rue Kalchesbruck
L-1852 Luxembourg

Carmen Sousa
Tél. (+352) 448292 - 557
carmen.sousa@snhbm.lu

snhbm.lu