

Résidence BELVIS

VENDU

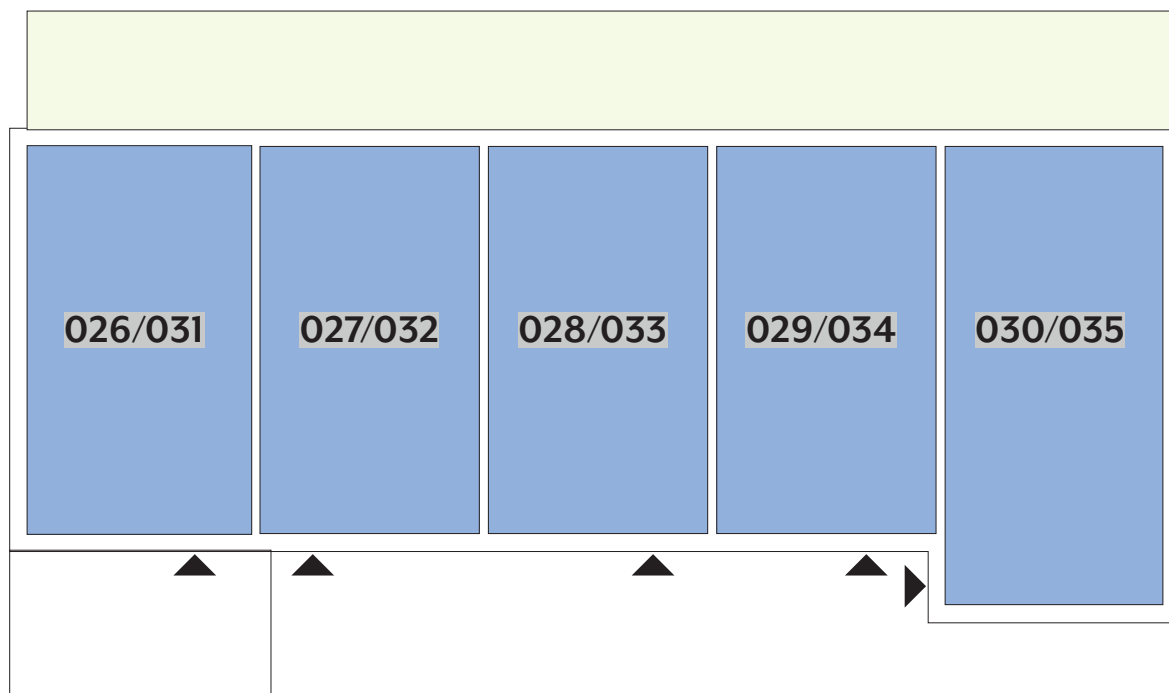


APPARTEMENTS AVEC ENTRÉE AU

REZ-DE-CHAUSSÉE

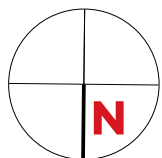
Type	Surface Utile	surface terrasse	surface cave	prix de vente subventionné TVA 3% *
026/031	119,04m ²	18,65m ²	8,25m ²	351.023 €**
027/032	116,65m ²	18,70m ²	8,13m ²	345.804 €**
028/033	116,02m ²	18,70m ²	7,94m ²	344.417 €**
029/034	116,45m ²	18,70m ²	7,94m ²	345.364 €**
030/035	137,66m ²	19,20m ²	9,92m ²	421.908 €**

- les surfaces inscrites dans ce tableau peuvent subir de légères modifications dues aux nécessités techniques de la construction.
- surface utile = surface calculée à l'intérieur des murs extérieurs.
- * primes ACE sont déjà déduites (uniquement pour les acquéreurs bénéficiant d'une prime de construction de l'Etat.)
- ** primes ACE et remboursement TVA sont déjà déduits.

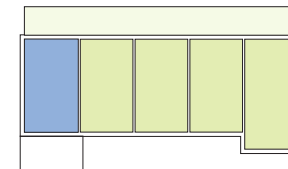


APPARTEMENT TYPE

026/031



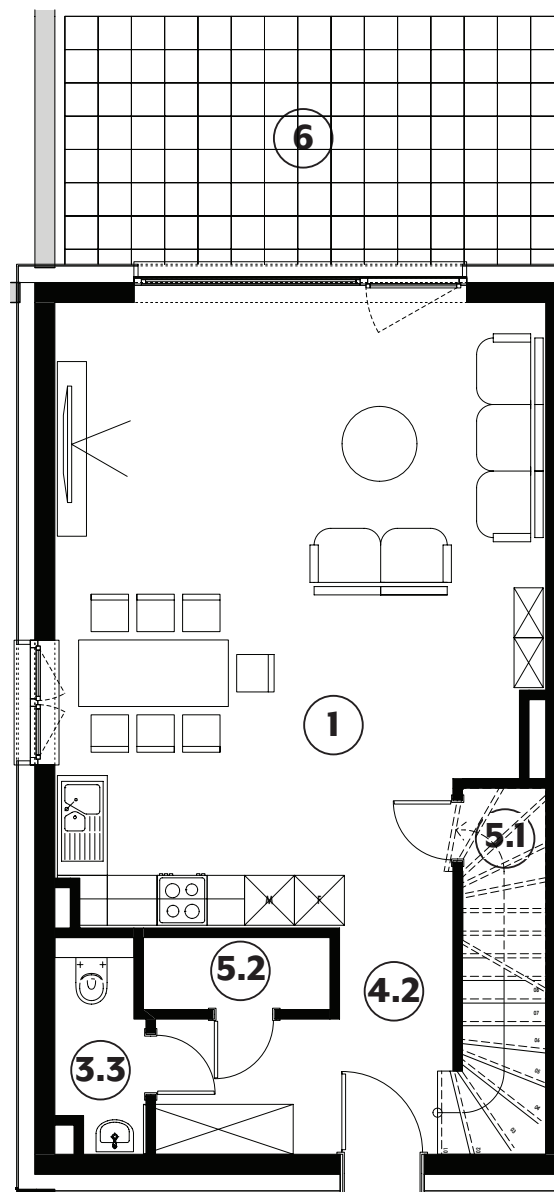
VENDU



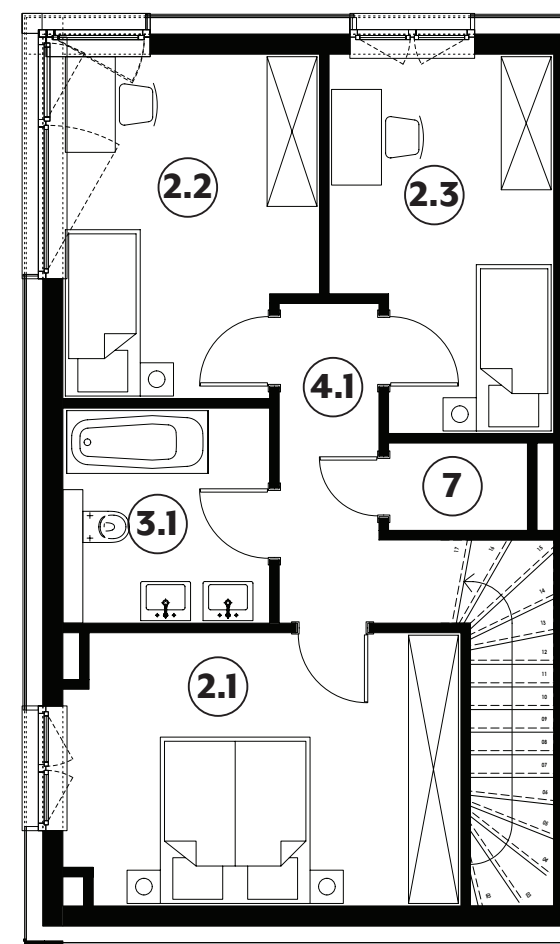
1	séjour/cuisine	41,85m²
2.1	chambre	15,35m²
2.2	chambre	12,00m²
2.3	chambre	11,10m²
3.1	salle de bains	6,40m²
3.3	w.c.	2,55m²
4.1	couloir	5,65m²
4.2	hall	7,10m²
5.1	débarras	3,40m²
5.2	débarras	1,95m²
6	terrasse	18,65m²
7	vmc	1,75m²

surface habitable

109,10m²



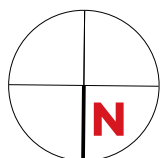
REZ-DE-CHAUSSÉE



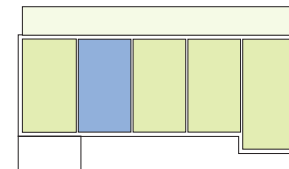
1^{ER} ÉTAGE

APPARTEMENT TYPE

027/032



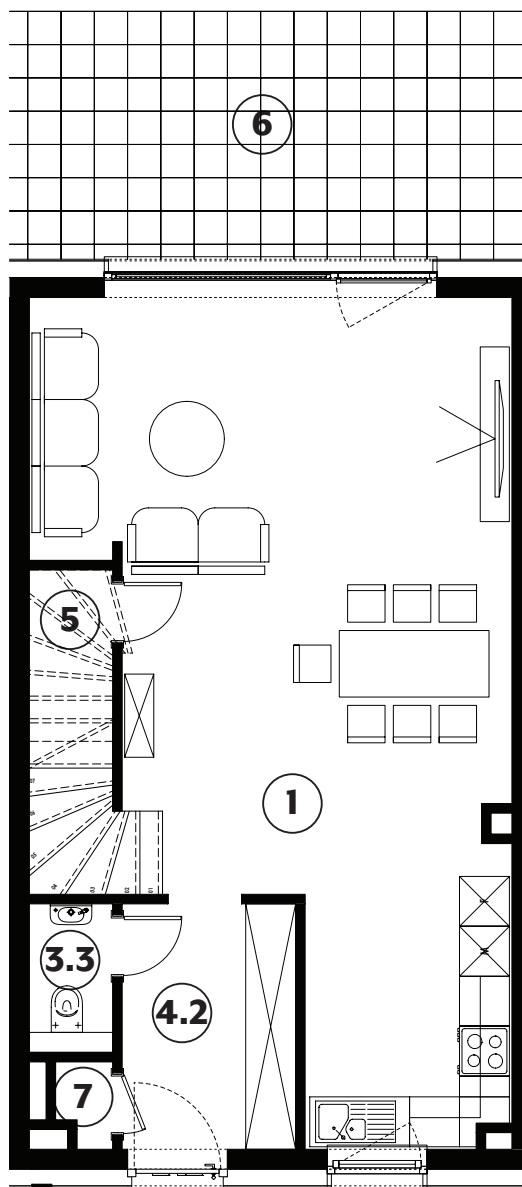
VENDU



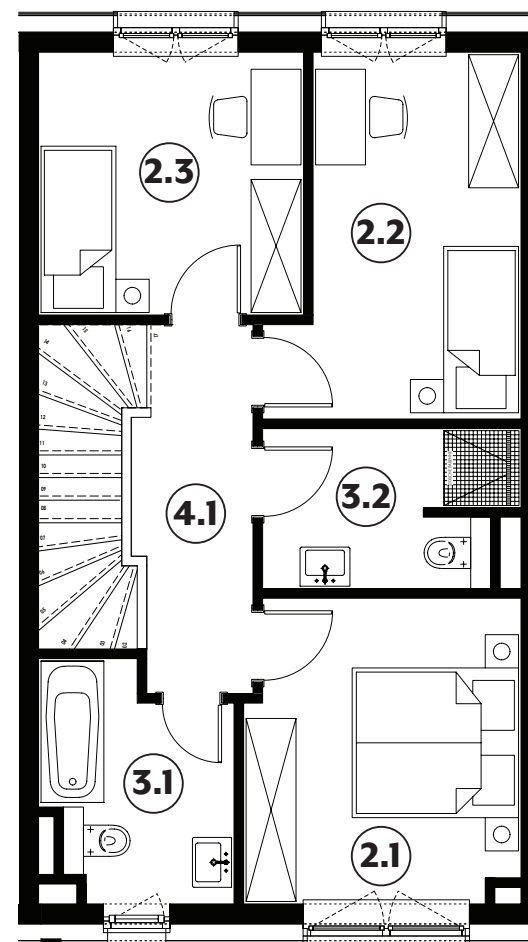
1	séjour/cuisine	43,65m²
2.1	chambre	11,85m²
2.2	chambre	11,70m²
2.3	chambre	10,05m²
3.1	salle de bains	5,85m²
3.2	salle de douche	5,55m²
3.3	w.c.	1,80m²
4.1	couloir	5,95m²
4.2	hall	6,00m²
5	débarras	2,90m²
6	terrasse	18,70m²
7	vmc	0,65m²

surface habitable

105,95m²



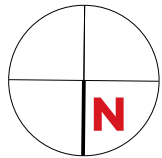
REZ-DE-CHAUSSÉE



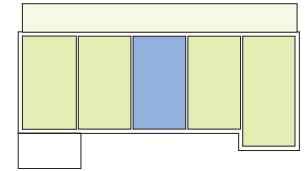
1^{ER} ÉTAGE

APPARTEMENT TYPE

028/033



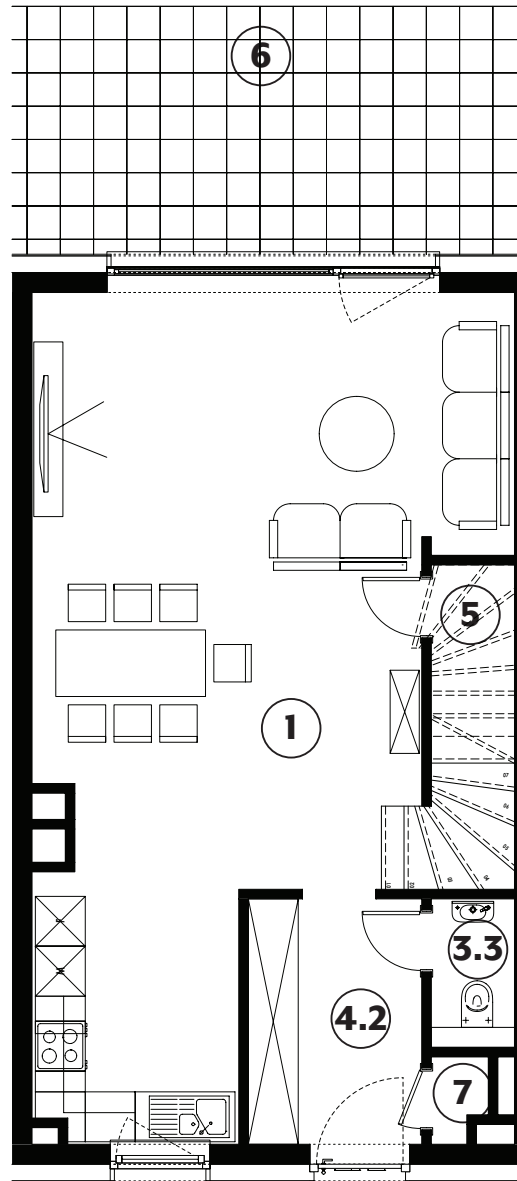
VENDU



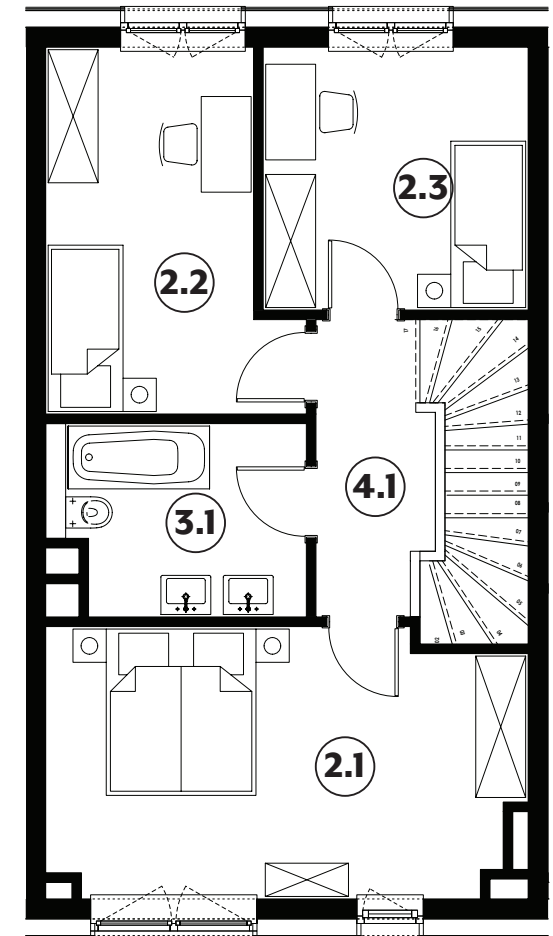
1	séjour/cuisine	43,20m²
2.1	chambre	17,95m²
2.2	chambre	11,75m²
2.3	chambre	10,05m²
3.1	salle de bains	6,80m²
3.3	w.c.	1,80m²
4.1	couloir	4,70m²
4.2	hall	6,00m²
5	débarras	2,90m²
6	terrasse	18,70m²
7	vmc	0,65m²

surface habitable

105,80m²



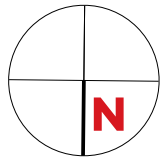
REZ-DE-CHAUSSÉE



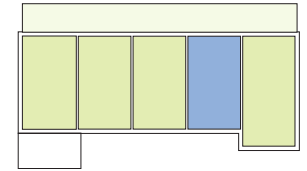
1^{ER} ÉTAGE

APPARTEMENT TYPE

029/034

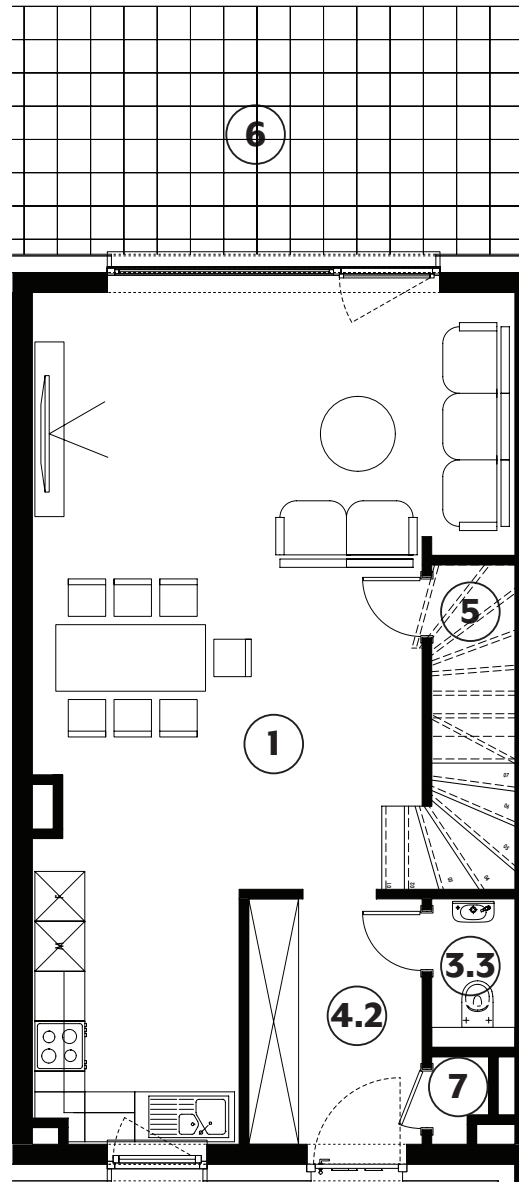


VENDU

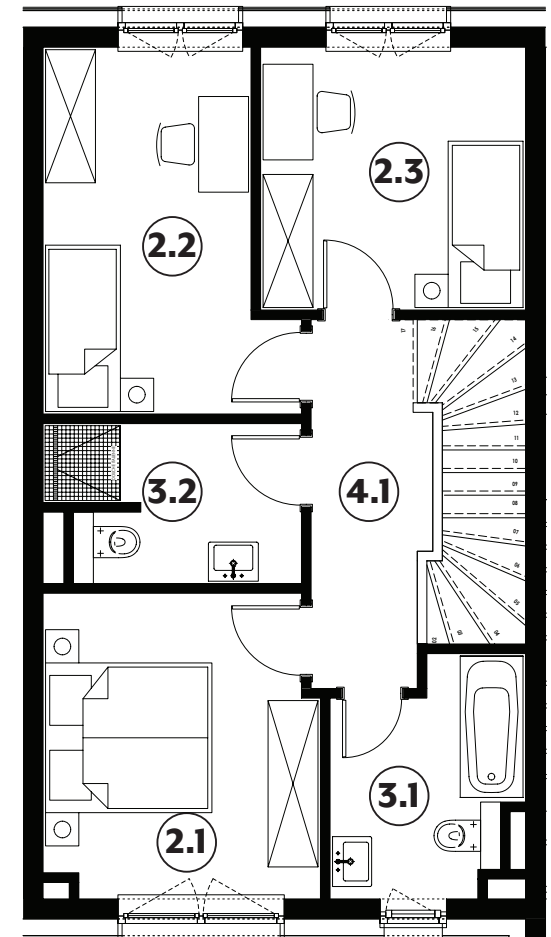


1	séjour/cuisine	43,50m²
2.1	chambre	11,85m²
2.2	chambre	11,70m²
2.3	chambre	10,05m²
3.1	salle de bains	5,85m²
3.2	salle de douche	5,55m²
3.3	w.c.	1,80m²
4.1	couloir	5,95m²
4.2	hall	6,00m²
5	débarras	2,90m²
6	terrasse	18,70m²
7	vmc	0,65m²

surface habitable
105,80m²



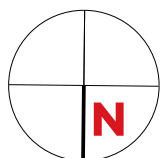
REZ-DE-CHAUSSÉE



1^{ER} ÉTAGE

APPARTEMENT TYPE

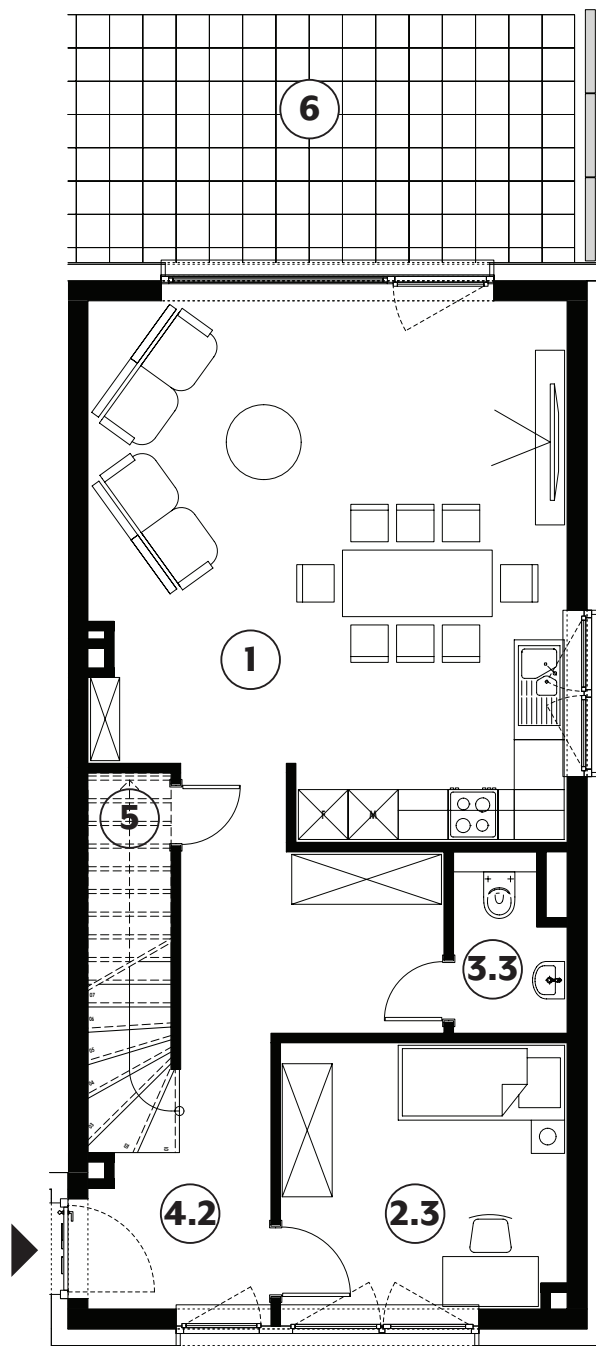
030/035



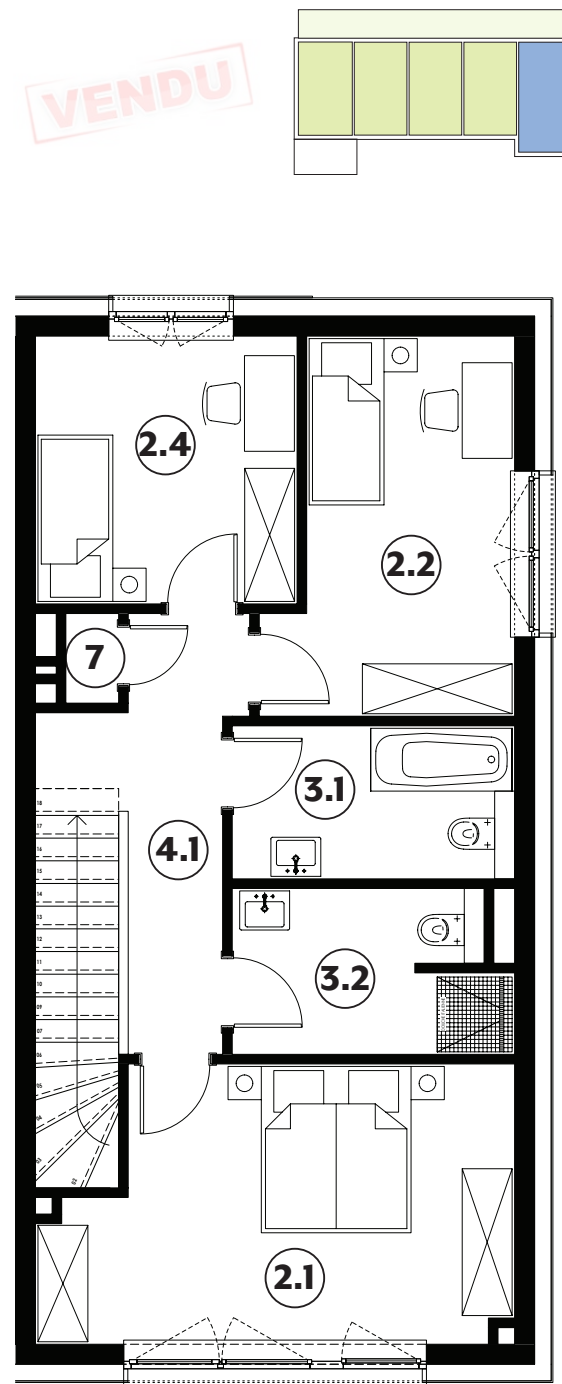
1	séjour/cuisine	34,75m²
2.1	chambre	17,40m²
2.2	chambre	12,15m²
2.3	chambre	10,65m²
2.4	chambre	10,15m²
3.1	salle de bains	6,25m²
3.2	salle de douche	6,30m²
3.3	w.c.	2,65m²
4.1	couloir	7,80m²
4.2	hall	13,80m²
5	débarras	3,55m²
6	terrasse	19,20m²
7	vmc	0,70m²

surface habitable

126,15m²



REZ-DE-CHAUSSÉE



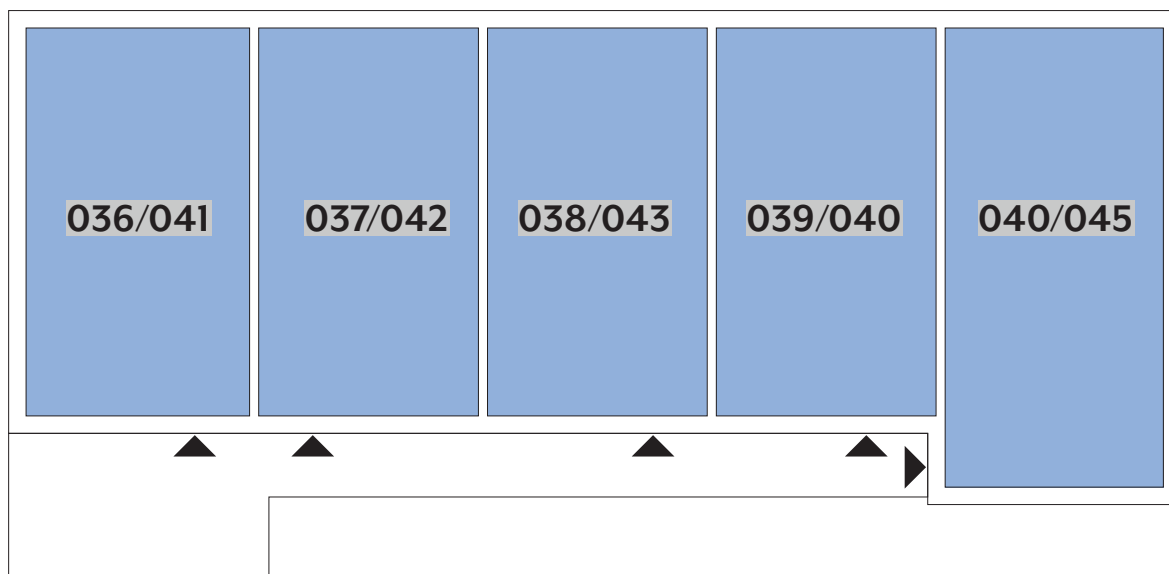
1^{ER} ÉTAGE

APPARTEMENTS AVEC ENTRÉE AU

2^{ÈME} ÉTAGE

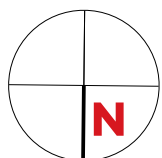
Type	Surface Utile	surface balcon	surface cave	prix de vente subventionné TVA 3% *
036/041	112,82m ²	19,30m ²	7,08m ²	368.006 €**
037/042	110,60m ²	17,95m ²	6,92m ²	361.075 €**
038/043	109,96m ²	17,95m ²	5,86m ²	359.544 €**
039/044	110,61m ²	17,95m ²	6,92m ²	361.098 €**
040/045	119,97m ²	18,85m ²	8,78m ²	384.596 €**

- les surfaces inscrites dans ce tableau peuvent subir de légères modifications dues aux nécessités techniques de la construction.
- surface utile = surface calculée à l'intérieur des murs extérieurs.
- * primes ACE sont déjà déduites (uniquement pour les acquéreurs bénéficiant d'une prime de construction de l'Etat.)
- ** primes ACE et remboursement TVA sont déjà déduits.

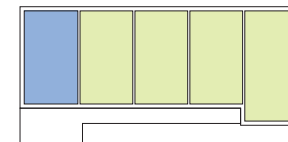


APPARTEMENT TYPE

036/041



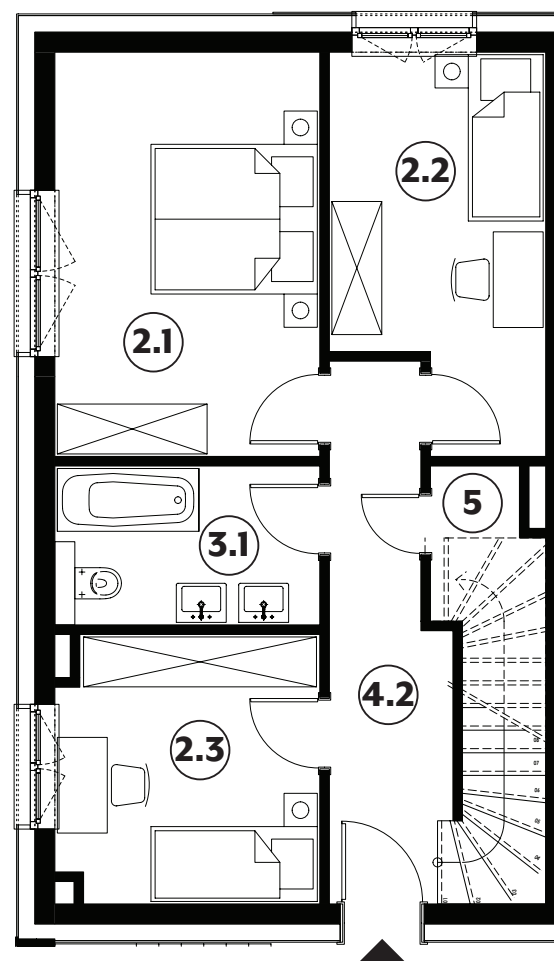
VENDU



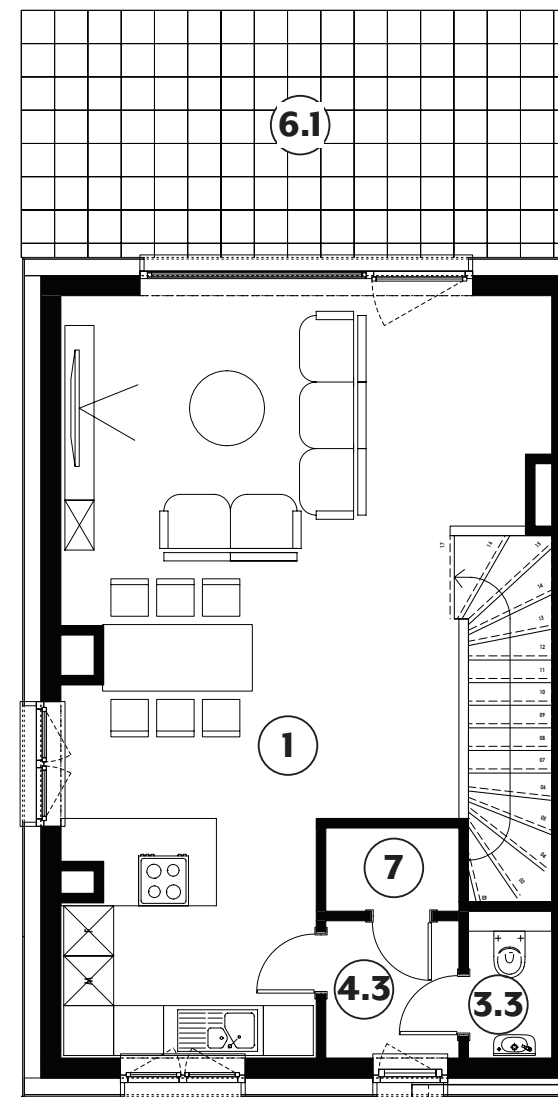
1	séjour/cuisine	41,05m²
2.1	chambre	15,50m²
2.2	chambre	10,90m²
2.3	chambre	10,00m²
3.1	salle de bains	6,00m²
3.3	w.c.	1,60m²
4.2	hall	8,25m²
4.3	hall	2,65m²
5	débarras	4,70m²
6.1	balcon	19,30m²
7	vmc	1,60m²

surface habitable

102,25m²



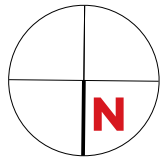
2^{ÈME} ÉTAGE



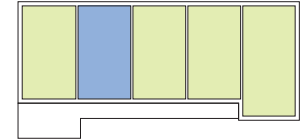
3^{ÈME} ÉTAGE

APPARTEMENT TYPE

037/042



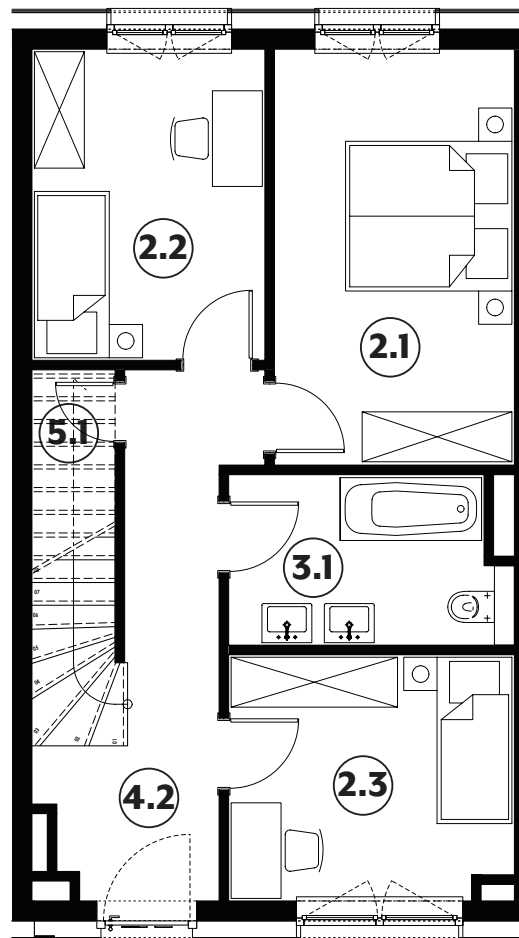
VENDU



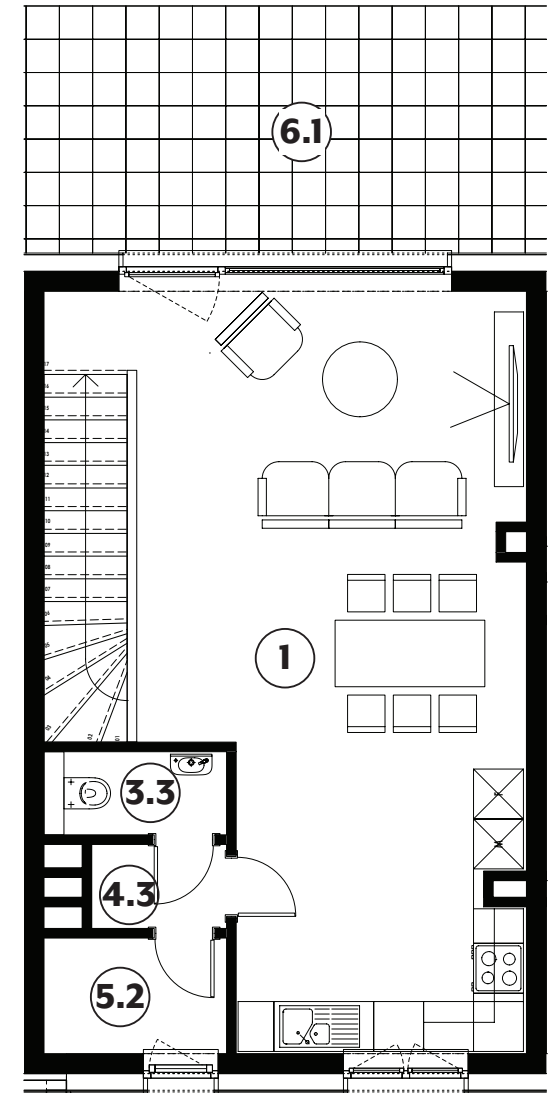
1	séjour/cuisine	39,20m²
2.1	chambre	14,45m²
2.2	chambre	10,45m²
2.3	chambre	10,00m²
3.1	salle de bains	6,45m²
3.3	w.c.	2,20m²
4.2	hall	9,45m²
4.3	hall	1,65m²
5.1	débarras	3,50m²
5.2	débarras	3,05m²
6.1	balcon	17,95m²

surface habitable

100,40m²



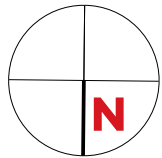
2^{ÈME} ÉTAGE



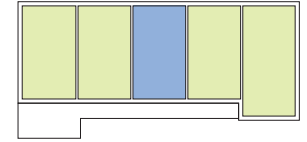
3^{ÈME} ÉTAGE

APPARTEMENT TYPE

038/043



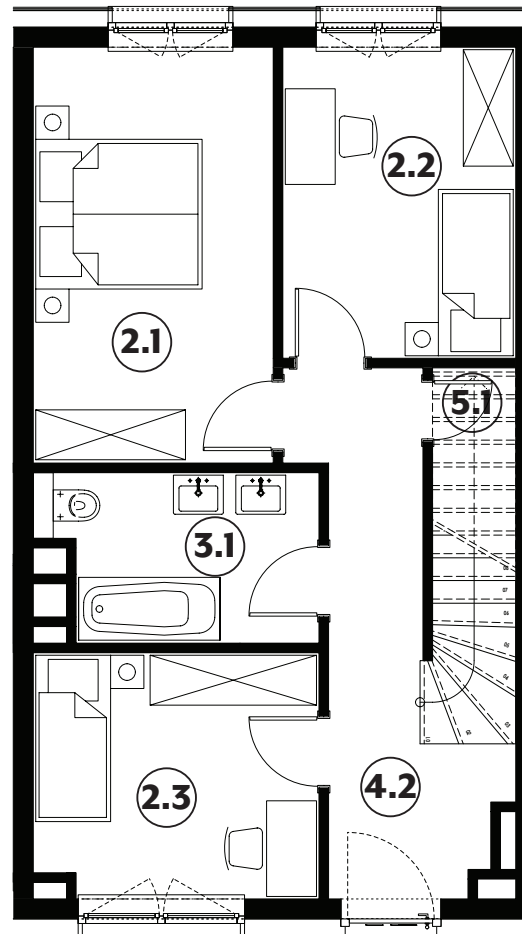
VENDU



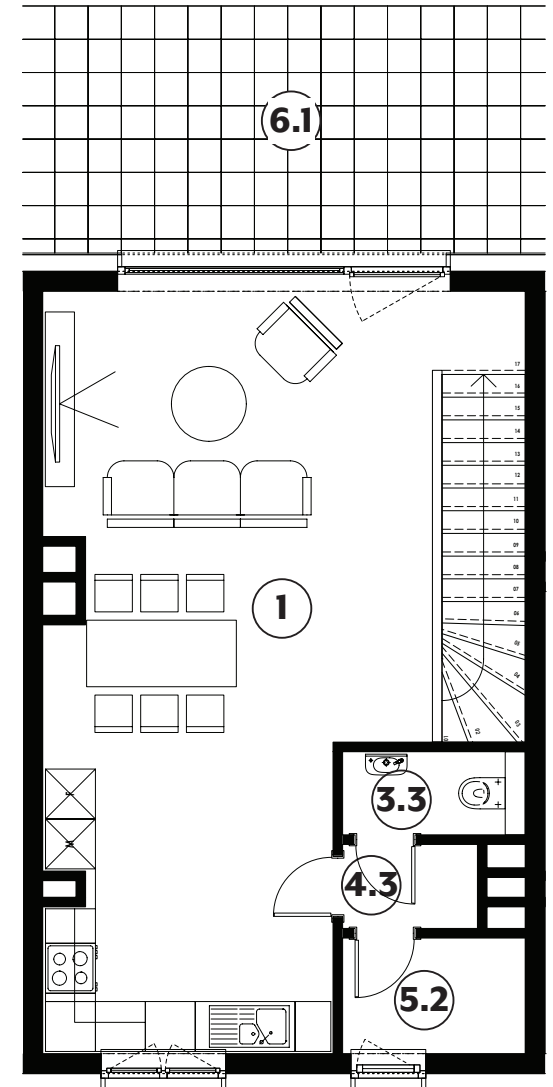
1	séjour/cuisine	38,80m²
2.1	chambre	14,45m²
2.2	chambre	10,45m²
2.3	chambre	10,00m²
3.1	salle de bains	6,15m²
3.3	w.c.	2,20m²
4.2	hall	9,45m²
4.3	hall	1,65m²
5.1	débarras	3,50m²
5.2	débarras	3,05m²
6.1	balcon	17,95m²

surface habitable

99,70m²



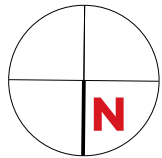
2^{ÈME} ÉTAGE



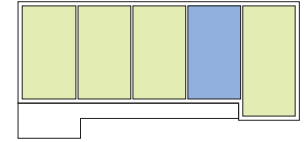
3^{ÈME} ÉTAGE

APPARTEMENT TYPE

039/044



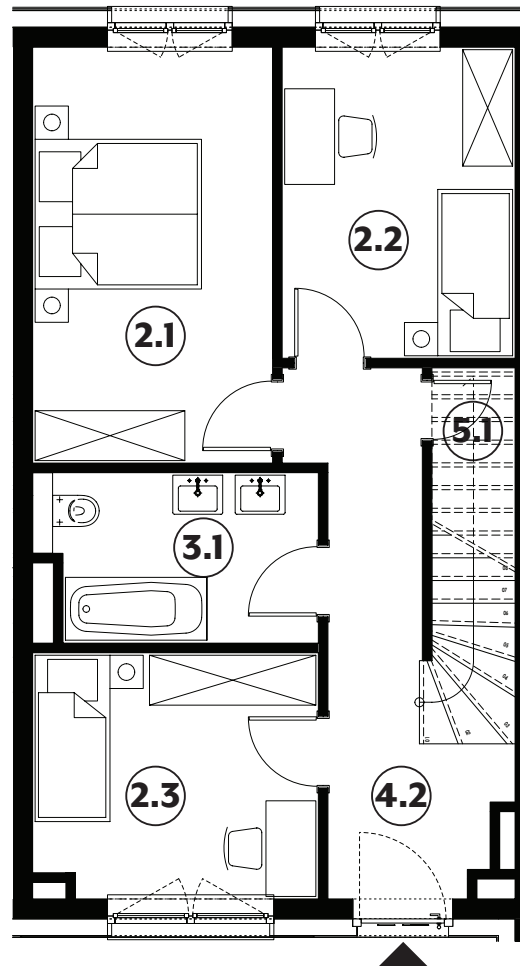
VENDU



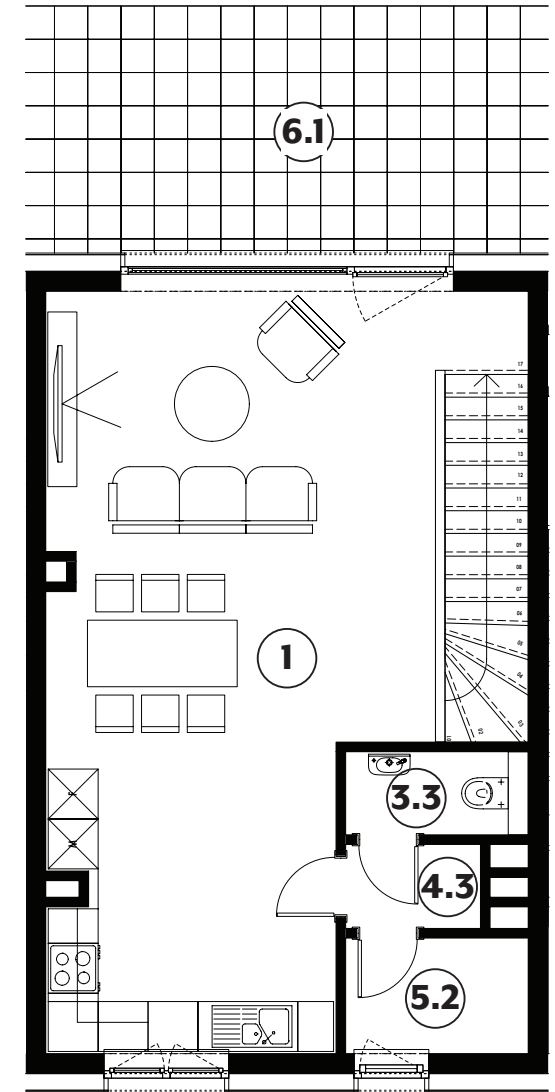
1	séjour/cuisine	39,20m²
2.1	chambre	14,45m²
2.2	chambre	10,45m²
2.3	chambre	10,00m²
3.1	salle de bains	6,50m²
3.3	w.c.	2,20m²
4.2	hall	9,45m²
4.3	hall	1,65m²
5.1	débarras	3,50m²
5.2	débarras	3,05m²
6.1	balcon	17,95m²

surface habitable

100,45m²



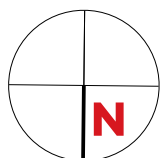
2^{ÈME} ÉTAGE



3^{ÈME} ÉTAGE

APPARTEMENT TYPE

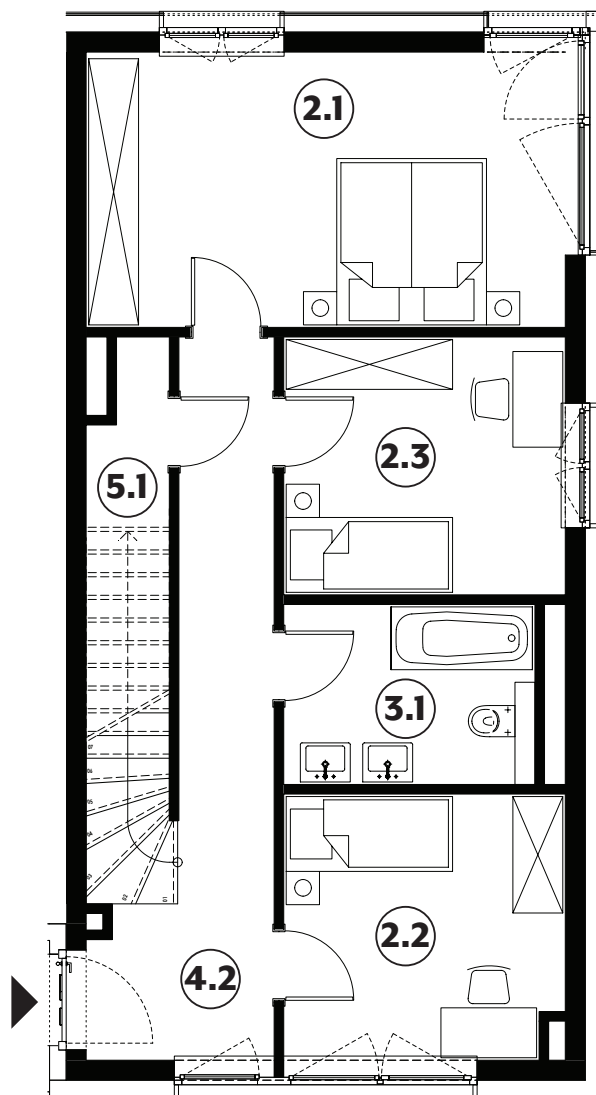
040/045



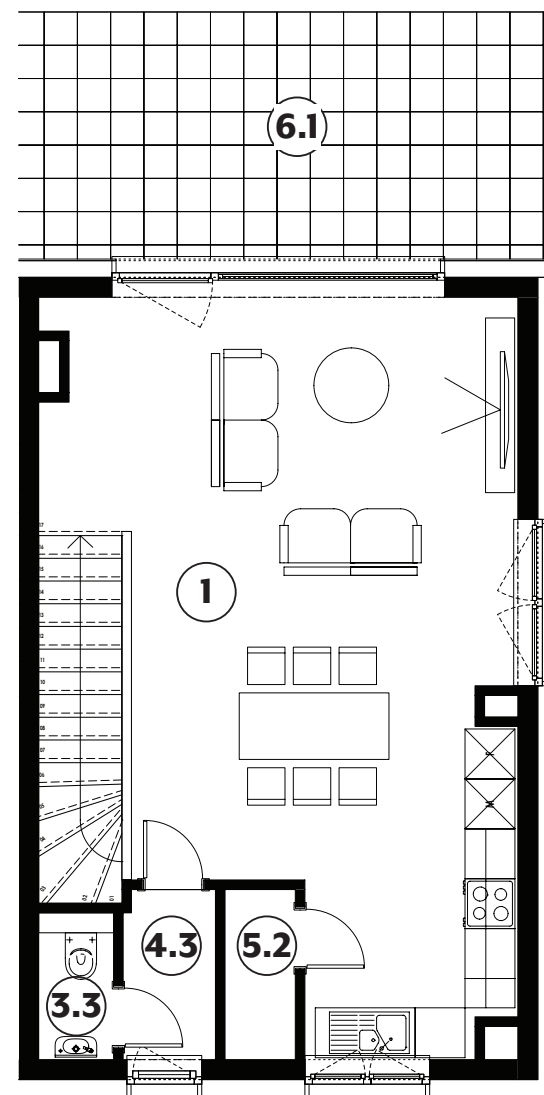
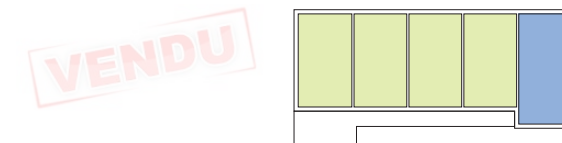
1	séjour/cuisine	40,40m²
2.1	chambre	19,05m²
2.2	chambre	10,65m²
2.3	chambre	10,50m²
3.1	salle de bains	6,35m²
3.3	w.c.	1,35m²
4.2	hall	11,95m²
4.3	hall	2,25m²
5.1	débarras	5,45m²
5.2	débarras	1,75m²
6.1	balcon	18,85m²

surface habitable

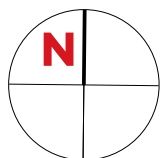
109,70m²



2^{ÈME} ÉTAGE



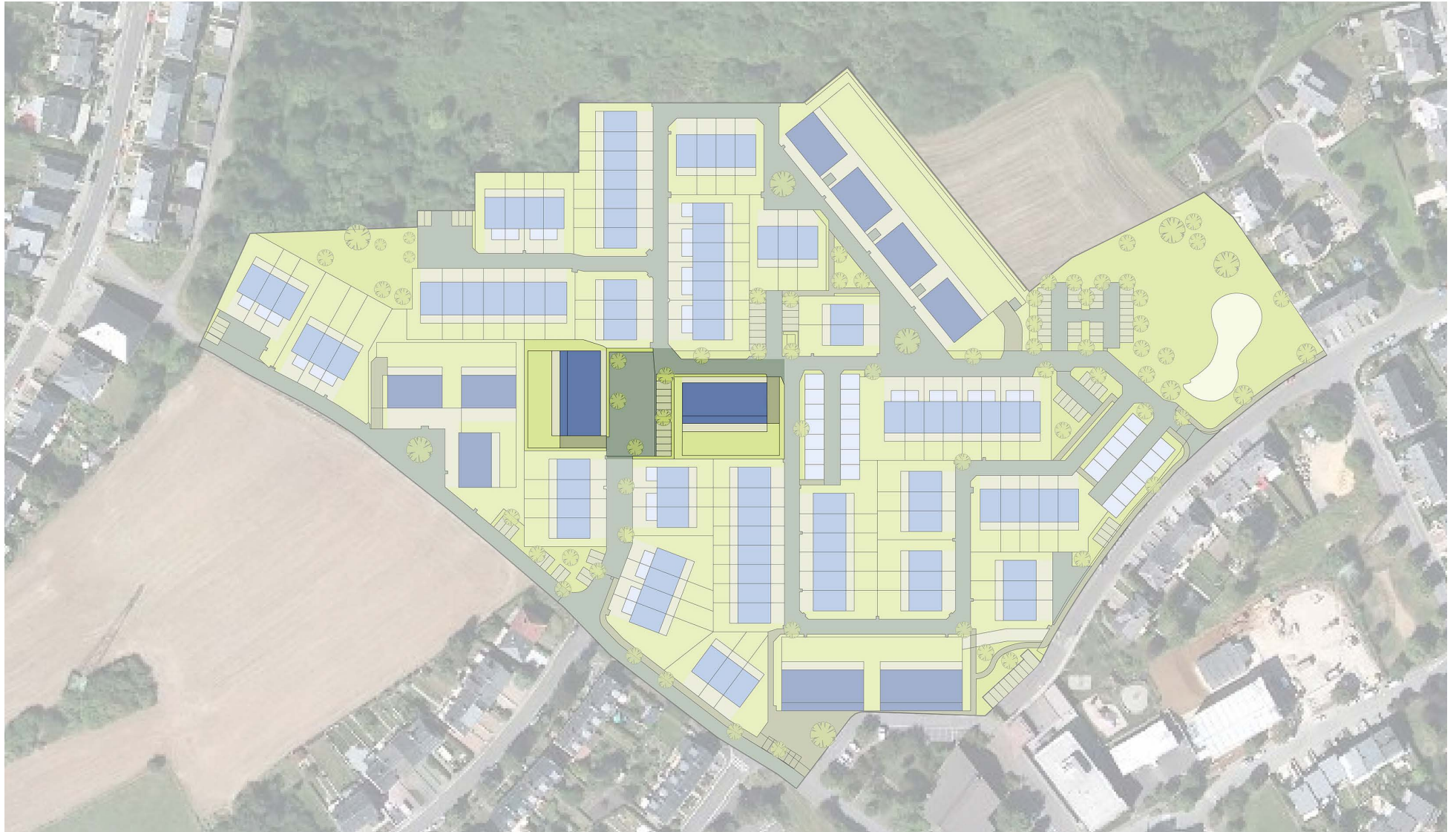
3^{ÈME} ÉTAGE



IMPLANTATION



PLAN DE SITUATION





Société Nationale des
Habitations à Bon Marché

2b, rue Kalchesbruck
L-1852 Luxembourg

Carmen Sousa
Tél. (+352) 448292 - 557
carmen.sousa@snhbm.lu

www.snhbm.lu