

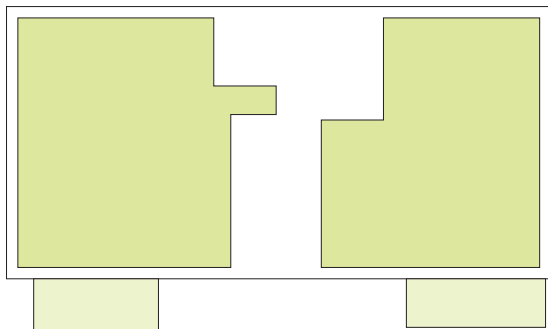
Résidence AZURITE



image non contractuelle

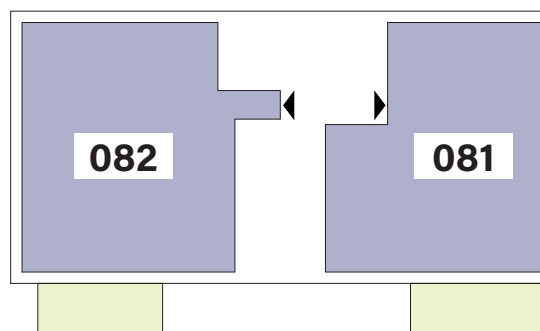
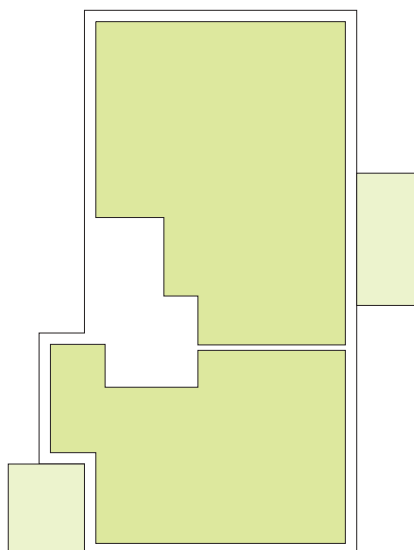
APPARTEMENTS

REZ-DE-CHAUSSÉE



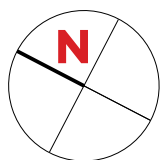
Type	Surface Utile	surface terrasse	prix de vente subventionné TVA 3% *
081	92,24m ²	13,15m ²	324.243 €
082	103,37m ²	13,10m ²	348.708 €**

- les surfaces inscrites dans ce tableau peuvent subir de légères modifications dues aux nécessités techniques de la construction.
- surface utile = surface calculée à l'intérieur des murs extérieurs.
- * primes ACE sont déjà déduites (uniquement pour les acquéreurs bénéficiant d'une prime de construction de l'Etat.)
- ** primes ACE et remboursement TVA sont déjà déduits.



APPARTEMENT TYPE

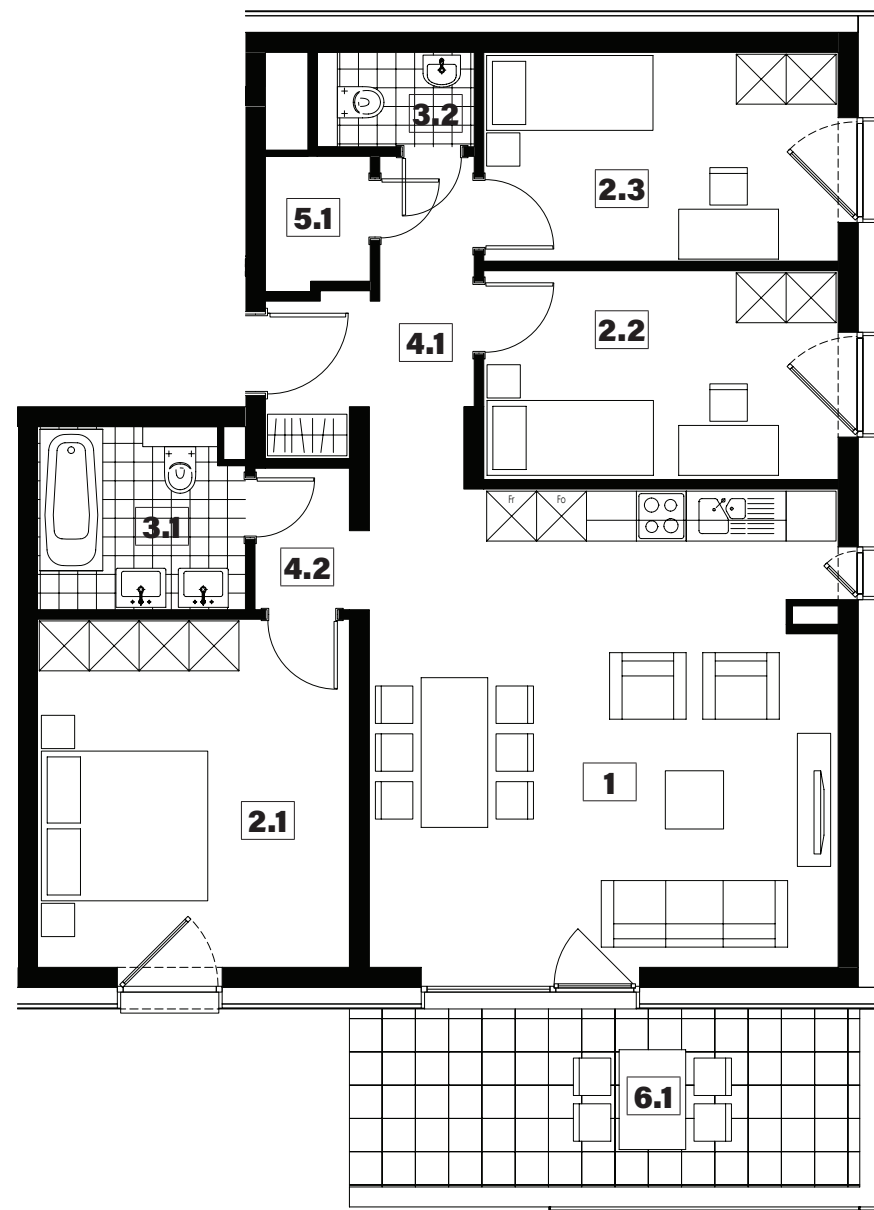
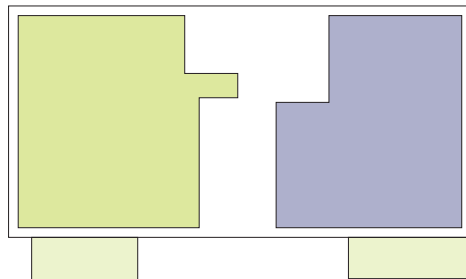
081



1	séjour/cuisine	33,25m²
2.1	chambre	15,70m²
2.2	chambre	10,70m²
2.3	chambre	10,70m²
3.1	salle de bains	5,35m²
3.2	w.c.	2,15m²
4.1	hall	5,80m²
4.2	couloir	2,15m²
5.1	débarras	1,95m²
6.1	terrasse	13,15m²

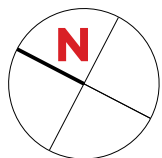
surface habitable

87,75m²



APPARTEMENT TYPE

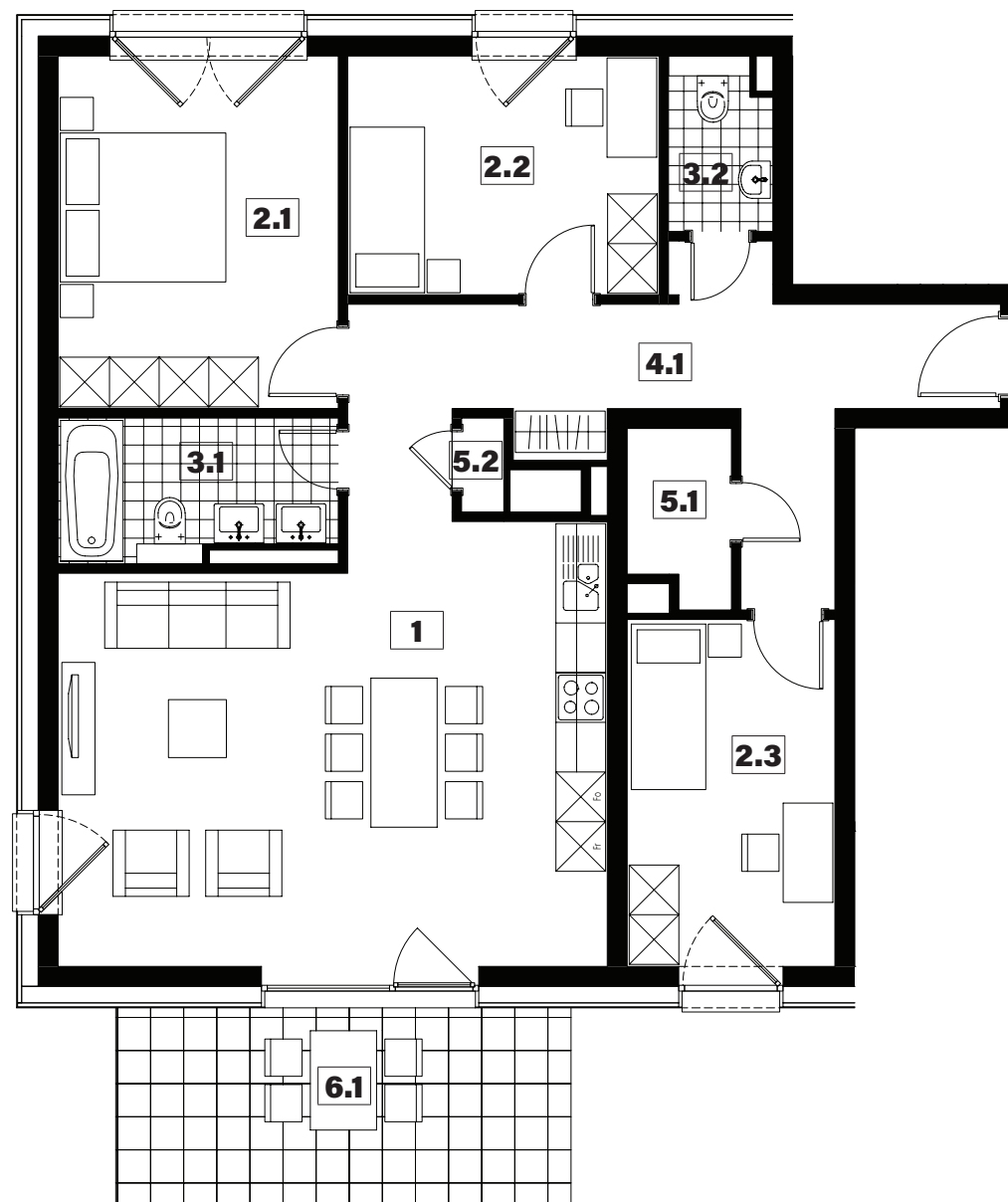
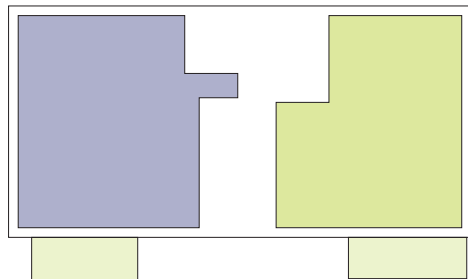
082



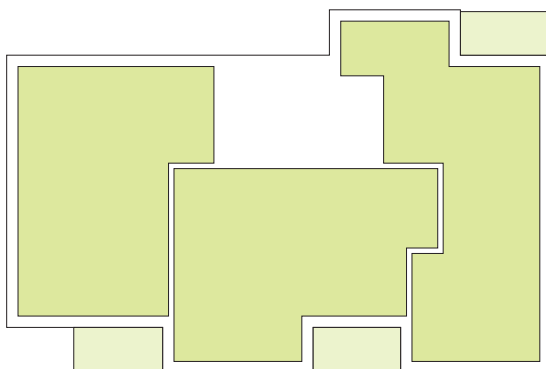
1	séjour/cuisine	33,50m²
2.1	chambre	14,40m²
2.2	chambre	10,85m²
2.3	chambre	10,50m²
3.1	salle de bains	5,55m²
3.2	w.c.	2,55m²
4.1	hall	16,00m²
5.1	débarras	2,50m²
5.2	technique	0,60m²
6.1	terrasse	13,10m²

surface habitable

96,45m²

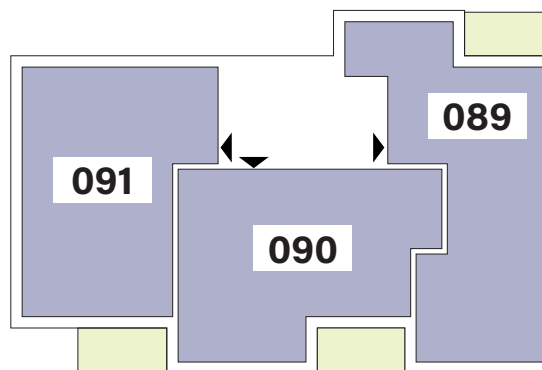
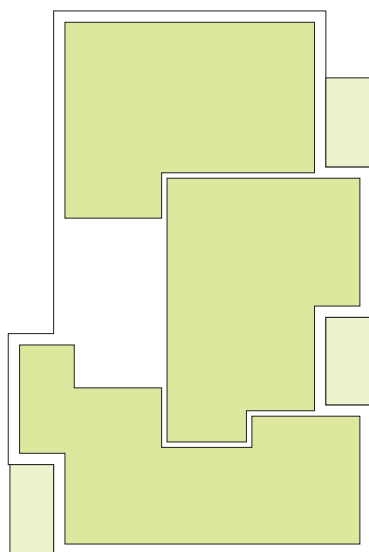


APPARTEMENTS 1^{er} ÉTAGE



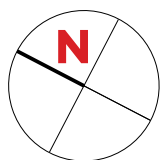
Type	Surface Utile	surface balcon	prix de vente subventionné TVA 3% *
089	81,93m ²	7,50m ²	285.611 €
090	81,00m ²	7,40m ²	283.413 €
091	80,44m ²	7,50m ²	282.303 €

- les surfaces inscrites dans ce tableau peuvent subir de légères modifications dues aux nécessités techniques de la construction.
- surface utile = surface calculée à l'intérieur des murs extérieurs.
- * primes ACE sont déjà déduites (uniquement pour les acquéreurs bénéficiant d'une prime de construction de l'Etat.)



APPARTEMENT TYPE

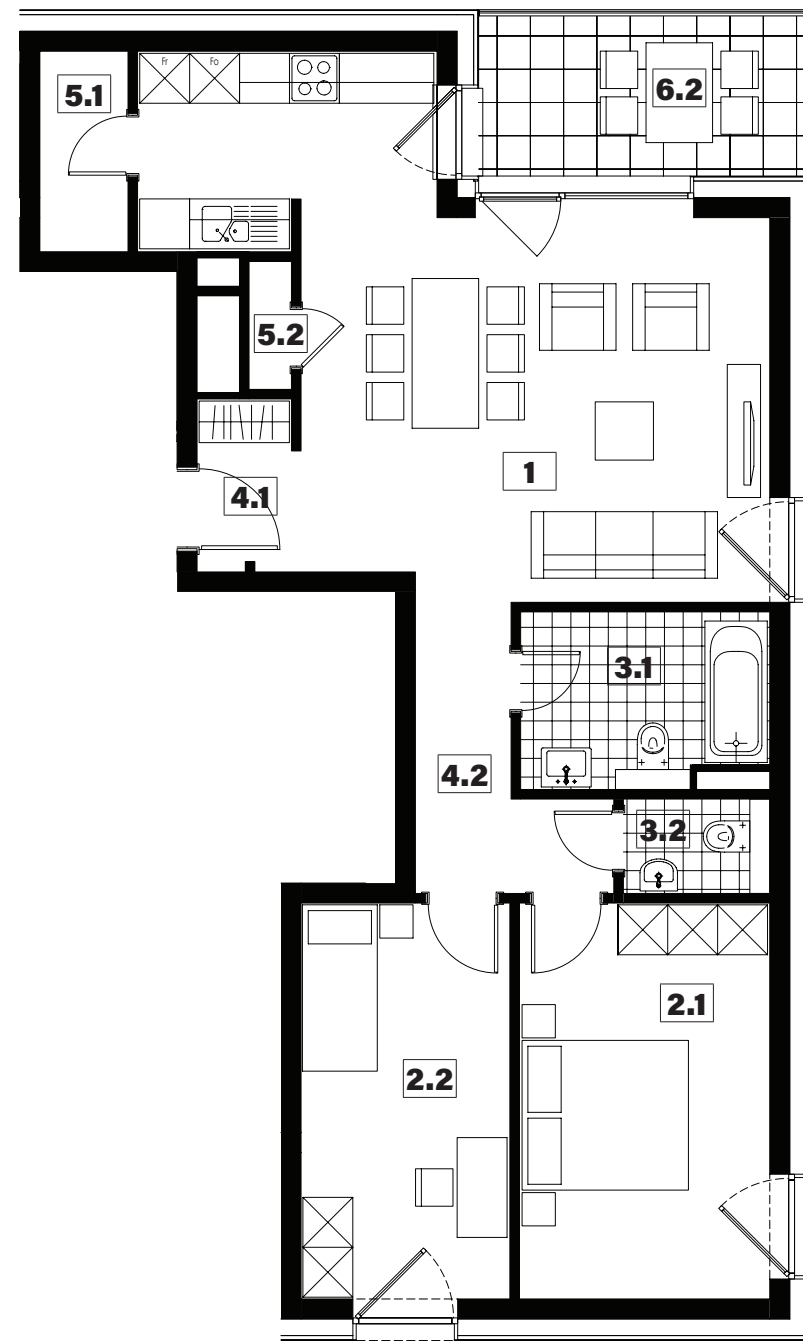
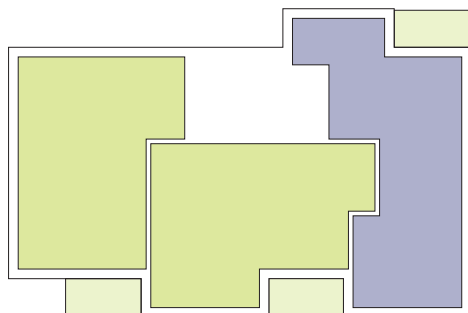
089



1	séjour/cuisine	33,50m²
2.1	chambre	14,35m²
2.2	chambre	11,95m²
3.1	salle de bains	6,10m²
3.2	w.c.	2,00m²
4.1	hall	2,45m²
4.2	couloir	5,45m²
5.1	débarras	2,55m²
5.2	technique	0,80m²
6.2	balcon	7,50m²

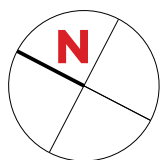
surface habitable

79,15m²



APPARTEMENT TYPE

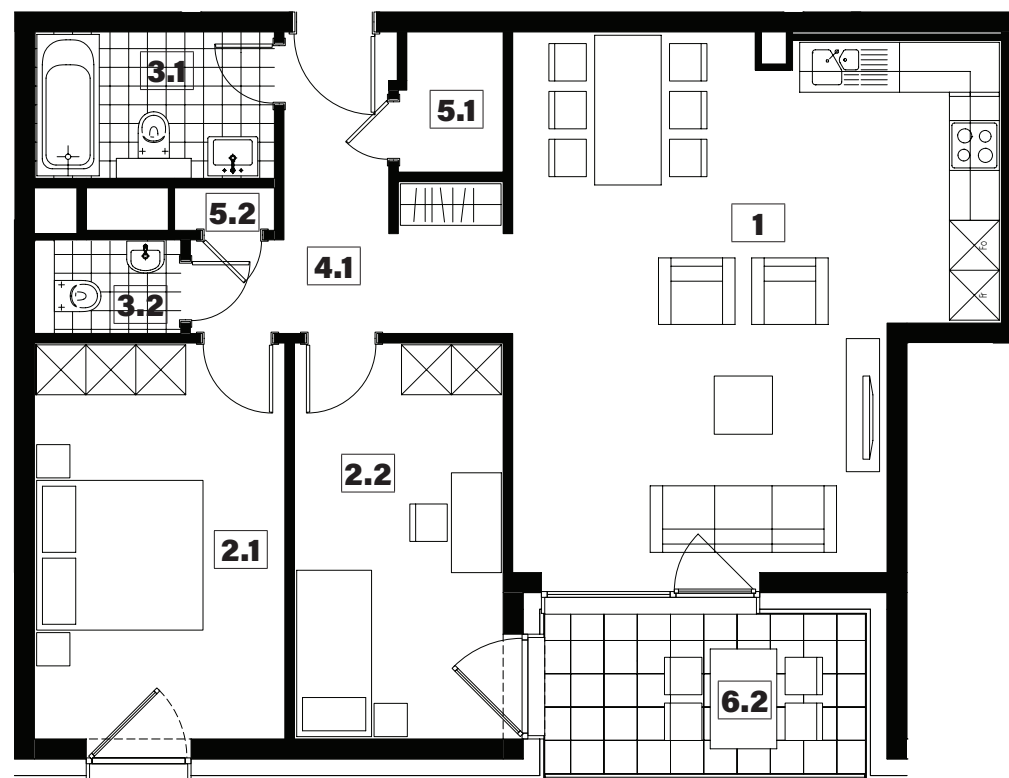
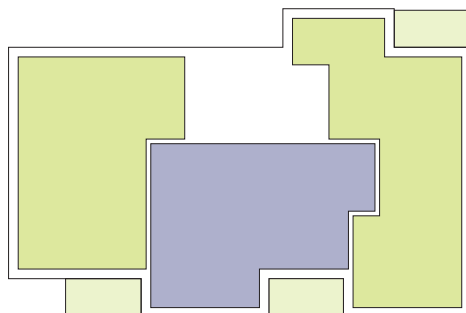
090



1	séjour/cuisine	33,60m²
2.1	chambre	14,35m²
2.2	chambre	11,95m²
3.1	salle de bains	5,10m²
3.2	w.c.	2,00m²
4.1	hall	8,40m²
5.1	débarras	2,05m²
5.2	technique	0,60m²
6.2	balcon	7,40m²

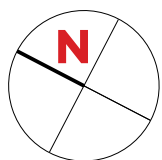
surface habitable

78,05m²



APPARTEMENT TYPE

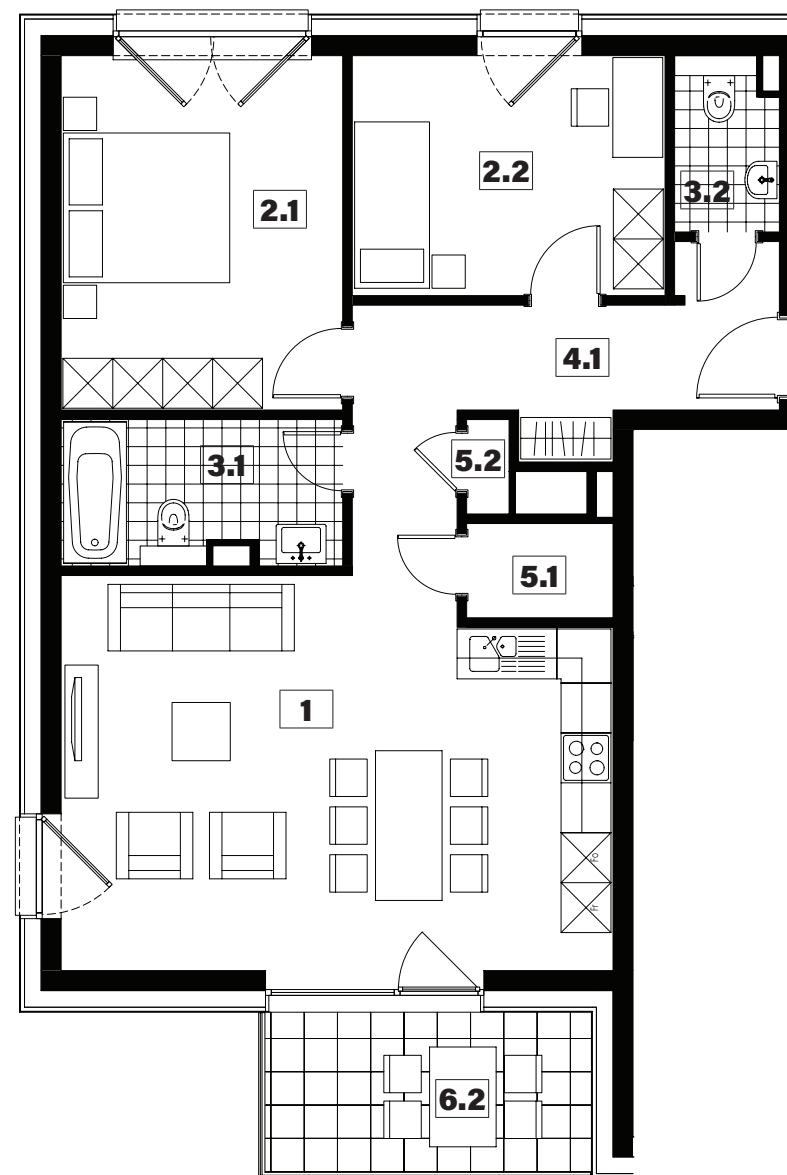
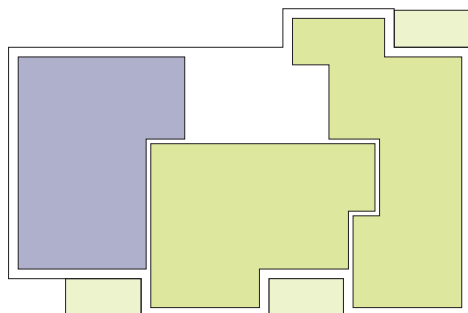
091



1	séjour/cuisine	30,35m²
2.1	chambre	14,40m²
2.2	chambre	10,85m²
3.1	salle de bains	5,75m²
3.2	w.c.	2,55m²
4.1	hall	10,55m²
5.1	débarras	2,00m²
5.2	technique	0,60m²
6.2	balcon	7,50m²

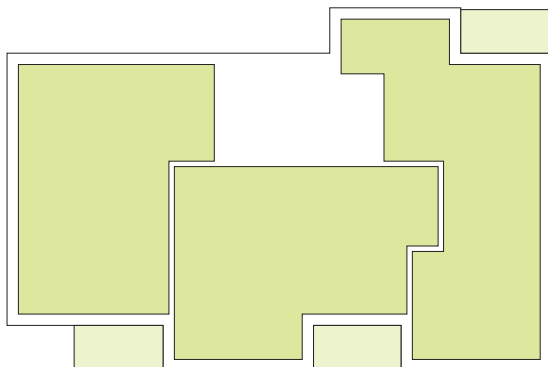
surface habitable

77,05m²



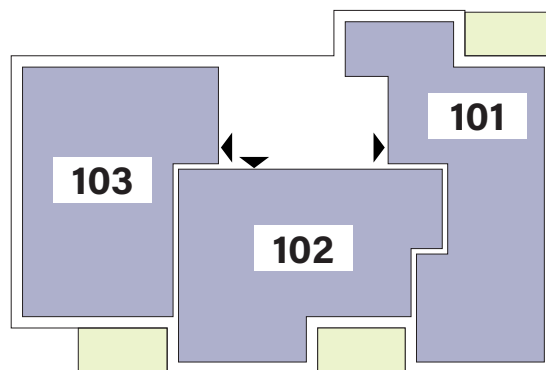
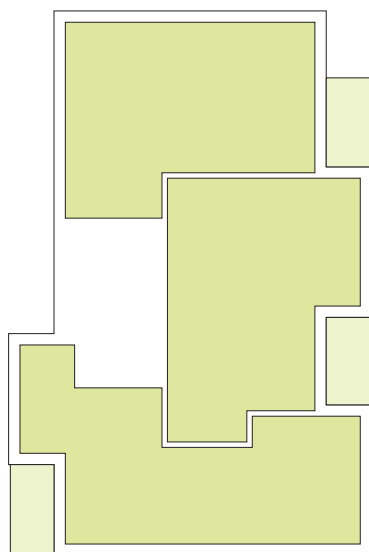
APPARTEMENTS

2^{ème} ÉTAGE



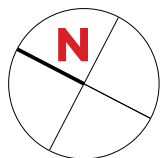
Type	Surface Utile	surface balcon	prix de vente subventionné TVA 3% *
101	81,93m ²	7,50m ²	290.812 €
102	81,00m ²	7,40m ²	288.554 €
103	80,44m ²	7,50m ²	287.413 €

- les surfaces inscrites dans ce tableau peuvent subir de légères modifications dues aux nécessités techniques de la construction.
- surface utile = surface calculée à l'intérieur des murs extérieurs.
- * primes ACE sont déjà déduites (uniquement pour les acquéreurs bénéficiant d'une prime de construction de l'Etat.)



APPARTEMENT TYPE

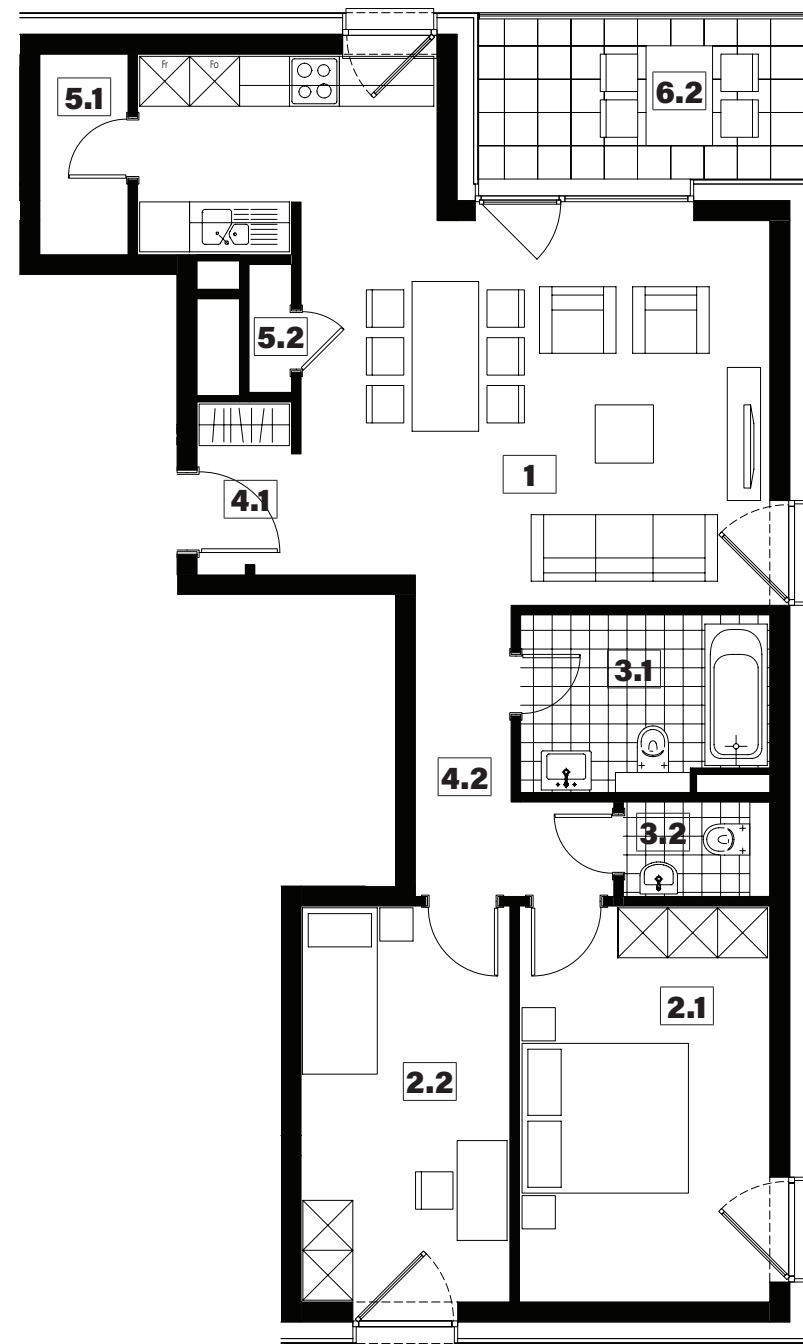
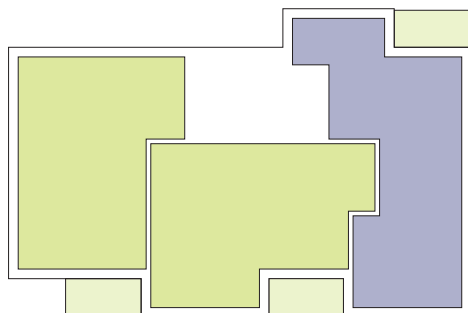
101



1	séjour/cuisine	33,50m²
2.1	chambre	14,35m²
2.2	chambre	11,95m²
3.1	salle de bains	6,10m²
3.2	w.c.	2,00m²
4.1	hall	2,45m²
4.2	couloir	5,45m²
5.1	débarras	2,55m²
5.2	technique	0,80m²
6.2	balcon	7,50m²

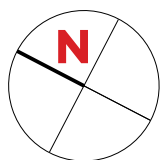
surface habitable

79,15m²



APPARTEMENT TYPE

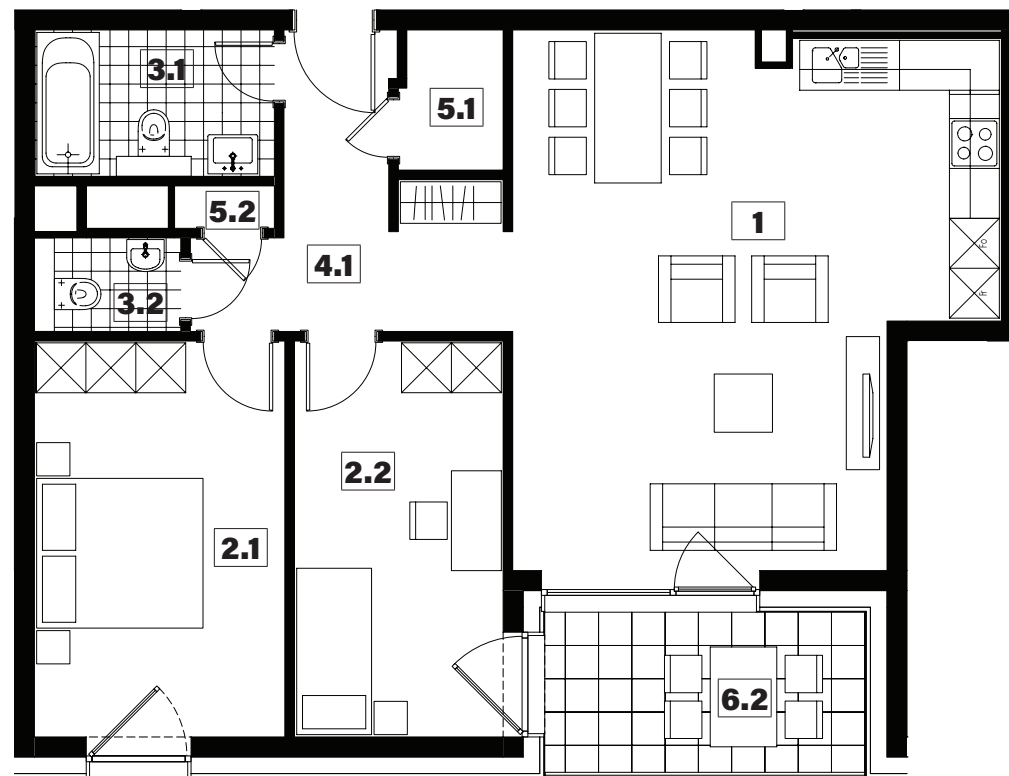
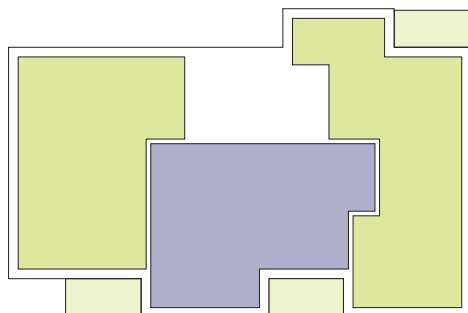
102



1	séjour/cuisine	33,60m²
2.1	chambre	14,35m²
2.2	chambre	11,95m²
3.1	salle de bains	5,10m²
3.2	w.c.	2,00m²
4.1	hall	8,40m²
5.1	débarras	2,05m²
5.2	technique	0,60m²
6.2	balcon	7,40m²

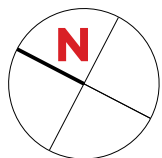
surface habitable

78,05m²



APPARTEMENT TYPE

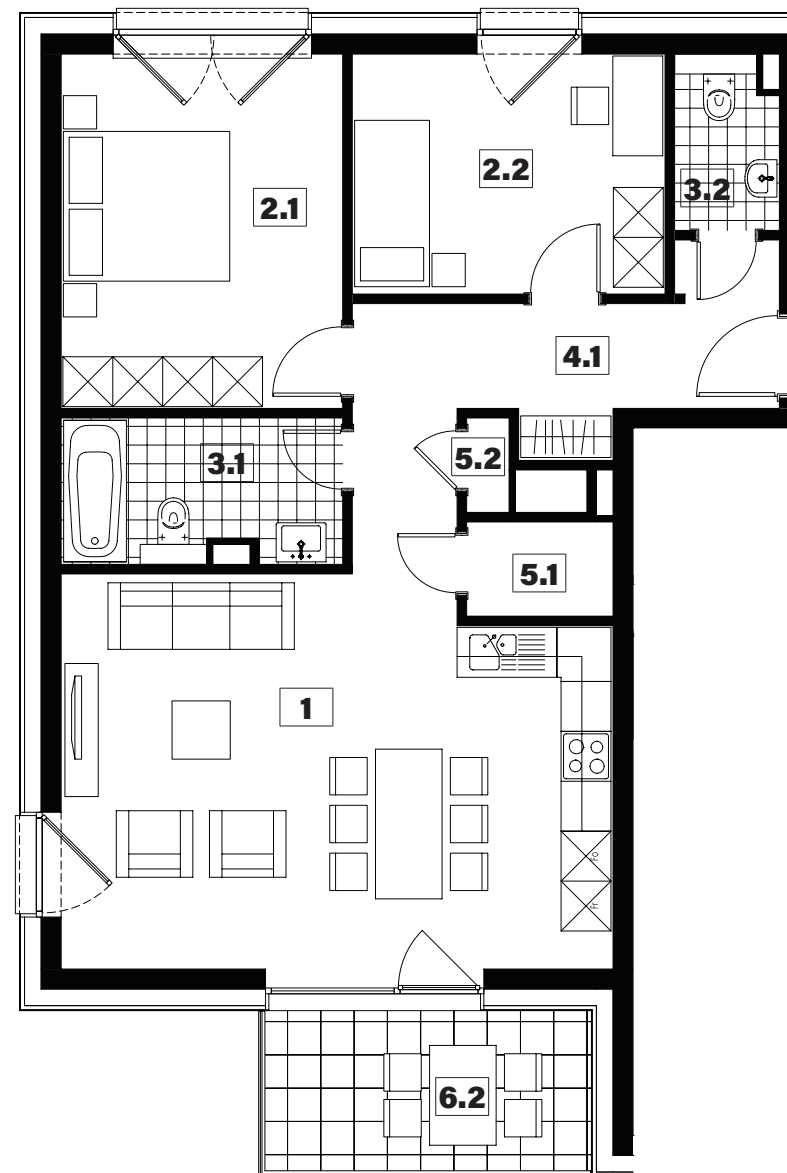
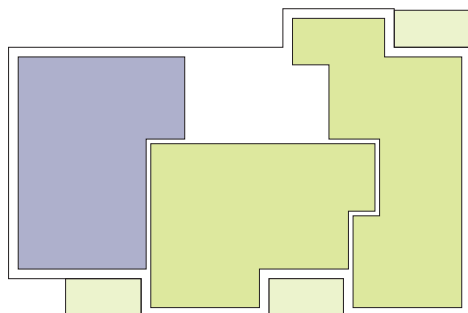
103

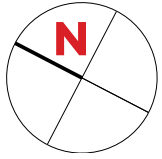


1	séjour/cuisine	30,35m²
2.1	chambre	14,40m²
2.2	chambre	10,85m²
3.1	salle de bains	5,75m²
3.2	w.c.	2,55m²
4.1	hall	10,55m²
5.1	débarras	2,00m²
5.2	technique	0,60m²
6.2	balcon	7,50m²

surface habitable

77,05m²





PLAN DE SITUATION



NOTES

This image shows a single sheet of white paper with horizontal ruling lines. The lines are evenly spaced and run across the width of the page. There are no margins, text, or other markings on the paper.

NOTES

[illegible]



SNHBM

Cindy Arendt

Chargée des ventes

Tel.: +352 44 82 92 - 555

E-mail: cindy.arendt@snhbm.lu

 snhbm.lu

image non contractuelle