

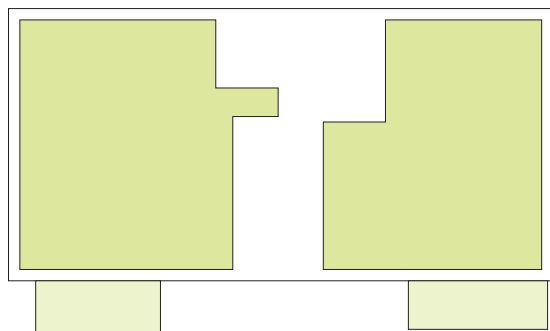
# Résidence BÉRYLITE



image non contractuelle

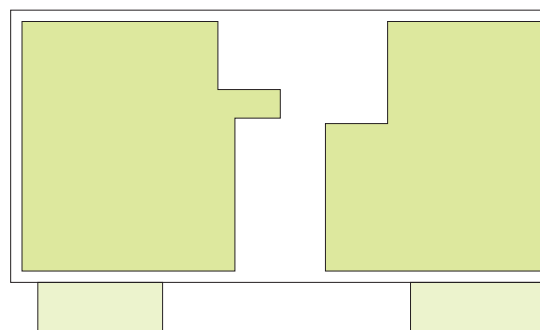
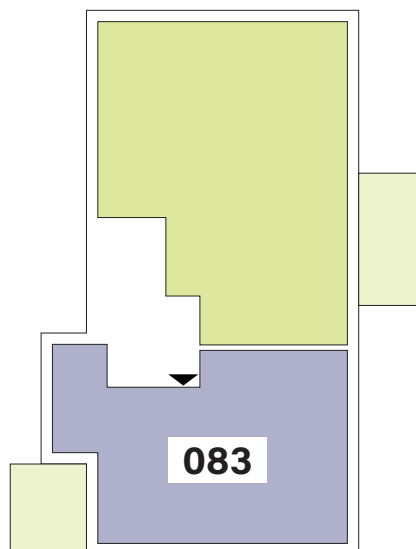
## APPARTEMENTS

# REZ-DE-CHAUSSÉE



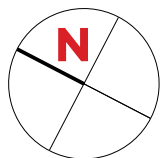
Type	Surface Utile	surface terrasse	prix de vente subventionné TVA 3% *
<b>083</b>	<b>94,29m<sup>2</sup></b>	<b>13,45m<sup>2</sup></b>	<b>331.553 €</b>

- les surfaces inscrites dans ce tableau peuvent subir de légères modifications dues aux nécessités techniques de la construction.
- surface utile = surface calculée à l'intérieur des murs extérieurs.
- \* primes ACE sont déjà déduites (uniquement pour les acquéreurs bénéficiant d'une prime de construction de l'Etat.)
- \*\* primes ACE et remboursement TVA sont déjà déduits.



# APPARTEMENT TYPE

## 083

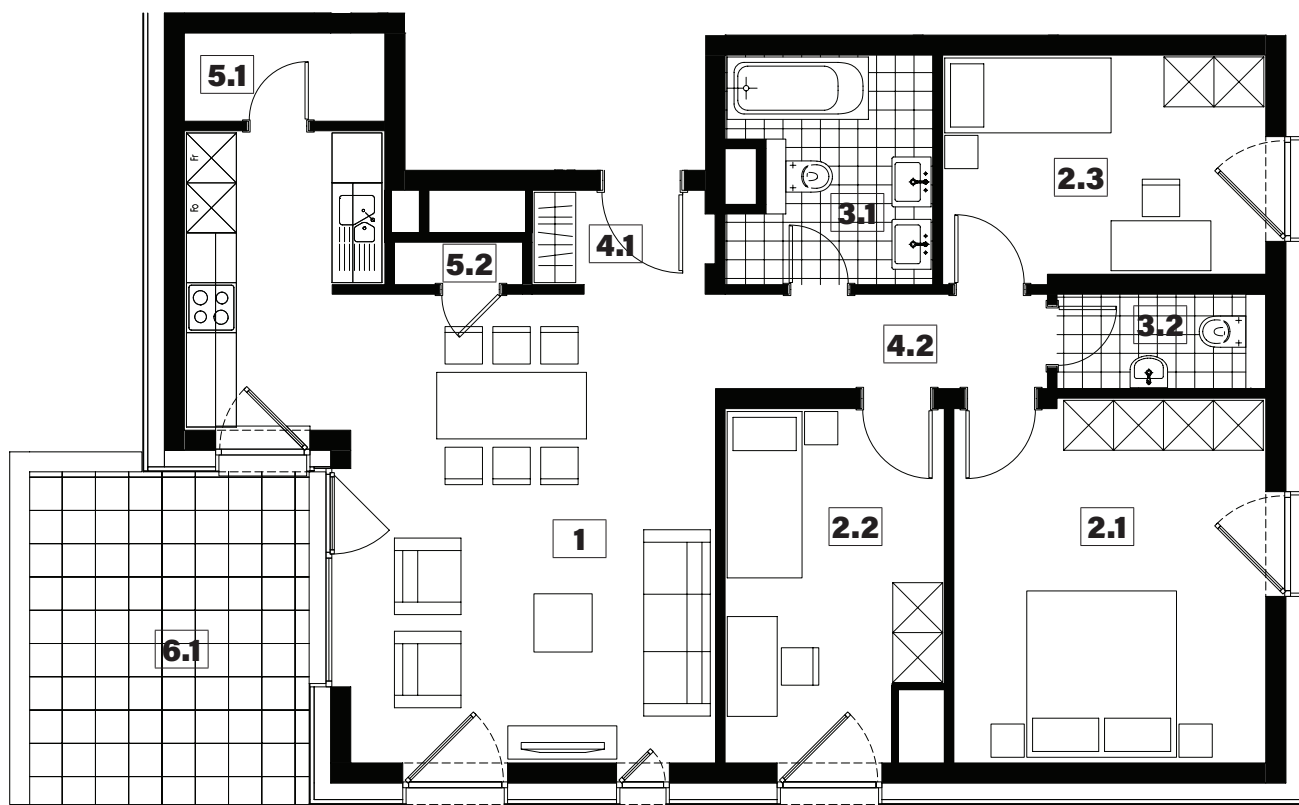
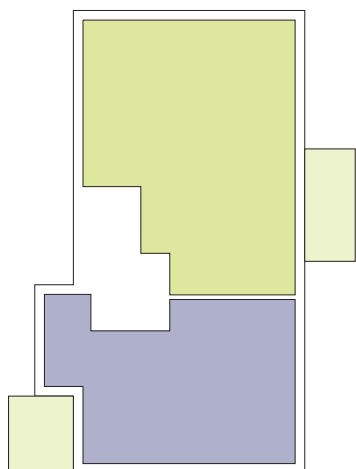


<b>1</b>	séjour/cuisine	<b>32,65m<sup>2</sup></b>
<b>2.1</b>	chambre	<b>16,30m<sup>2</sup></b>
<b>2.2</b>	chambre	<b>10,60m<sup>2</sup></b>
<b>2.3</b>	chambre	<b>10,40m<sup>2</sup></b>
<b>3.1</b>	salle de bains	<b>6,45m<sup>2</sup></b>
<b>3.2</b>	w.c.	<b>2,85m<sup>2</sup></b>

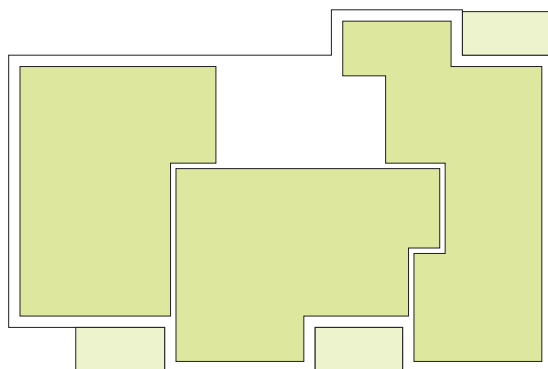
<b>4.1</b>	hall	<b>2,55m<sup>2</sup></b>
<b>4.2</b>	couloir	<b>4,50m<sup>2</sup></b>
<b>5.1</b>	débarras	<b>2,55m<sup>2</sup></b>
<b>5.2</b>	technique	<b>0,80m<sup>2</sup></b>
<b>6.1</b>	terrasse	<b>13,45m<sup>2</sup></b>

surface habitable

**89,65m<sup>2</sup>**

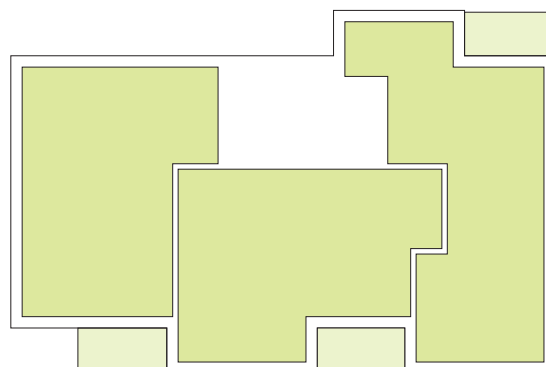
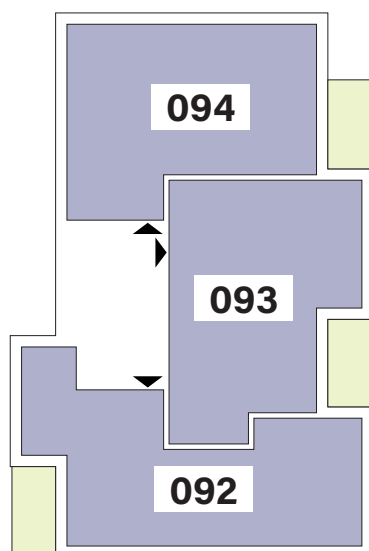


# APPARTEMENTS 1<sup>er</sup> ÉTAGE



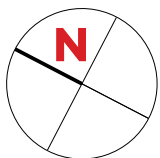
Type	Surface Utile	surface balcon	prix de vente subventionné TVA 3% *
<b>092</b>	81,93m <sup>2</sup>	7,55m <sup>2</sup>	<b>285.611 €</b>
<b>093</b>	81,00m <sup>2</sup>	7,40m <sup>2</sup>	<b>283.413 €</b>
<b>094</b>	80,44m <sup>2</sup>	7,55m <sup>2</sup>	<b>282.303 €</b>

- les surfaces inscrites dans ce tableau peuvent subir de légères modifications dues aux nécessités techniques de la construction.
- surface utile = surface calculée à l'intérieur des murs extérieurs.
- \* primes ACE sont déjà déduites (uniquement pour les acquéreurs bénéficiant d'une prime de construction de l'Etat.)



# APPARTEMENT TYPE

# 092

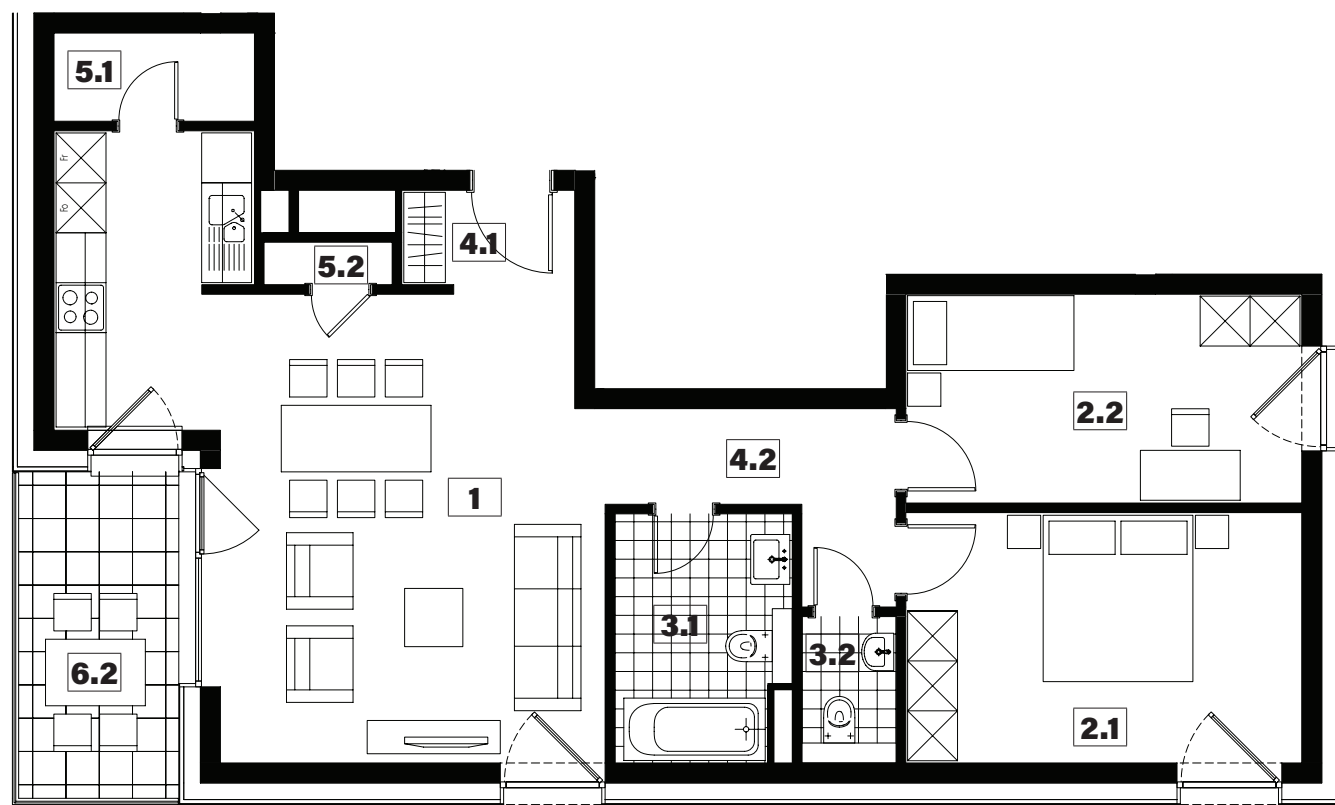
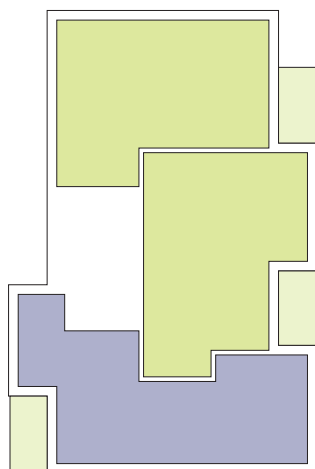


<b>1</b>	séjour/cuisine	<b>33,65m<sup>2</sup></b>
<b>2.1</b>	chambre	<b>14,35m<sup>2</sup></b>
<b>2.2</b>	chambre	<b>11,95m<sup>2</sup></b>
<b>3.1</b>	salle de bains	<b>6,10m<sup>2</sup></b>
<b>3.2</b>	w.c.	<b>2,00m<sup>2</sup></b>

<b>4.1</b>	hall	<b>2,35m<sup>2</sup></b>
<b>4.2</b>	couloir	<b>5,45m<sup>2</sup></b>
<b>5.1</b>	débarras	<b>2,55m<sup>2</sup></b>
<b>5.2</b>	technique	<b>0,80m<sup>2</sup></b>
<b>6.2</b>	balcon	<b>7,55m<sup>2</sup></b>

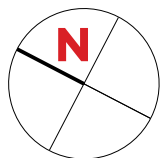
surface habitable

**79,20m<sup>2</sup>**



# APPARTEMENT TYPE

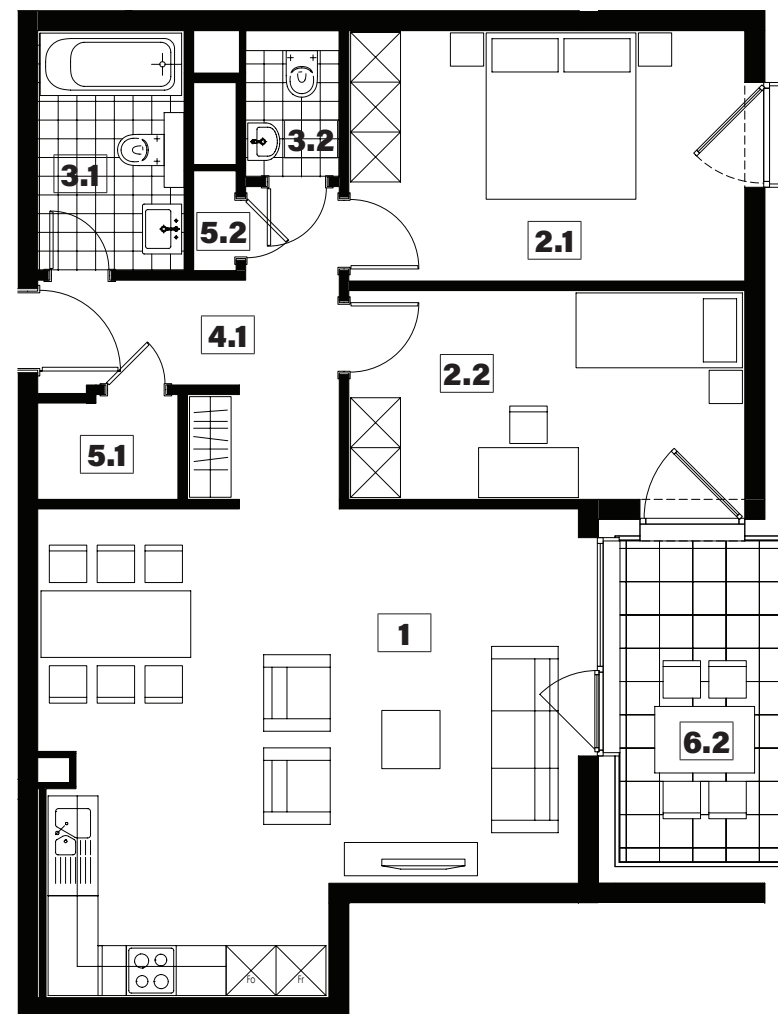
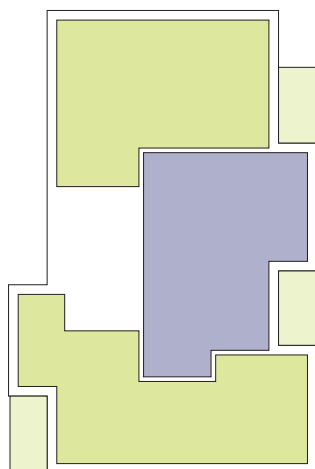
# 093



<b>1</b>	séjour/cuisine	<b>33,60m<sup>2</sup></b>
<b>2.1</b>	chambre	<b>14,35m<sup>2</sup></b>
<b>2.2</b>	chambre	<b>11,95m<sup>2</sup></b>
<b>3.1</b>	salle de bains	<b>5,10m<sup>2</sup></b>
<b>3.2</b>	w.c.	<b>2,00m<sup>2</sup></b>
<b>4.1</b>	hall	<b>8,40m<sup>2</sup></b>
<b>5.1</b>	débarras	<b>2,05m<sup>2</sup></b>
<b>5.2</b>	technique	<b>0,60m<sup>2</sup></b>
<b>6.2</b>	balcon	<b>7,40m<sup>2</sup></b>

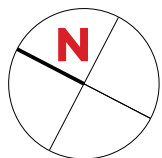
surface habitable

**78,05m<sup>2</sup>**



# APPARTEMENT TYPE

# 094

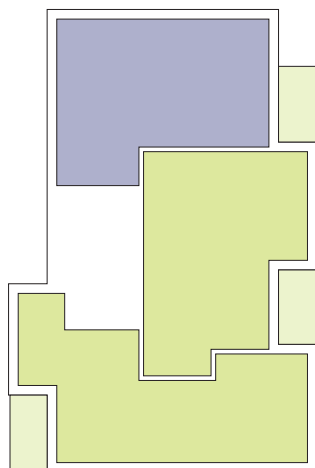


<b>1</b>	séjour/cuisine	<b>30,35m<sup>2</sup></b>
<b>2.1</b>	chambre	<b>14,40m<sup>2</sup></b>
<b>2.2</b>	chambre	<b>10,85m<sup>2</sup></b>
<b>3.1</b>	salle de bains	<b>5,75m<sup>2</sup></b>
<b>3.2</b>	w.c.	<b>2,55m<sup>2</sup></b>

<b>4.1</b>	hall	<b>10,55m<sup>2</sup></b>
<b>5.1</b>	débarras	<b>2,00m<sup>2</sup></b>
<b>5.2</b>	technique	<b>0,60m<sup>2</sup></b>
<b>6.2</b>	balcon	<b>7,55m<sup>2</sup></b>

surface habitable

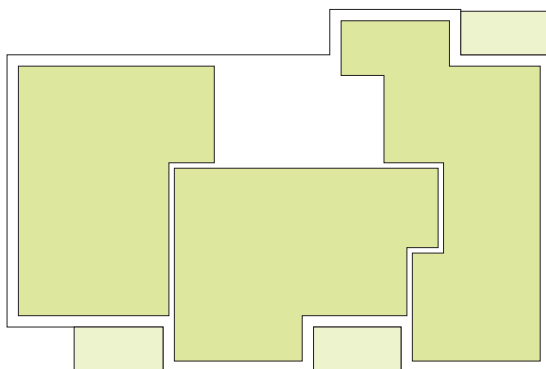
**77,05m<sup>2</sup>**





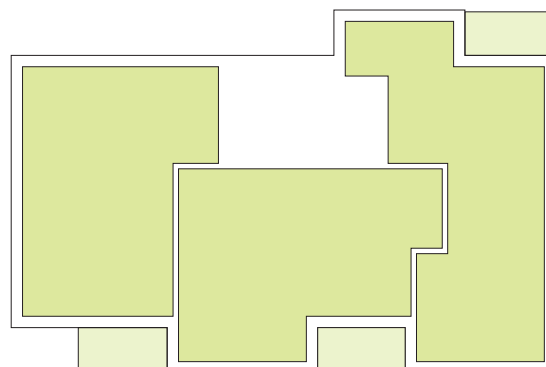
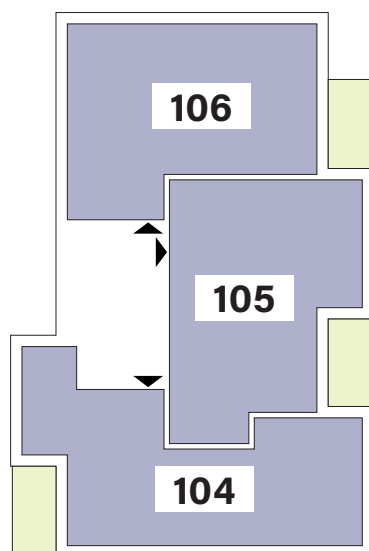
## APPARTEMENTS

# 2<sup>ème</sup> ÉTAGE



Type	Surface Utile	surface balcon	prix de vente subventionné TVA 3% *
<b>104</b>	81,93m <sup>2</sup>	7,55m <sup>2</sup>	<b>290.812 €</b>
<b>105</b>	81,00m <sup>2</sup>	7,40m <sup>2</sup>	<b>288.554 €</b>
<b>106</b>	80,44m <sup>2</sup>	7,55m <sup>2</sup>	<b>287.413 €</b>

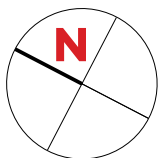
- les surfaces inscrites dans ce tableau peuvent subir de légères modifications dues aux nécessités techniques de la construction.
- surface utile = surface calculée à l'intérieur des murs extérieurs.
- \* primes ACE sont déjà déduites (uniquement pour les acquéreurs bénéficiant d'une prime de construction de l'Etat.)





# APPARTEMENT TYPE

# 104

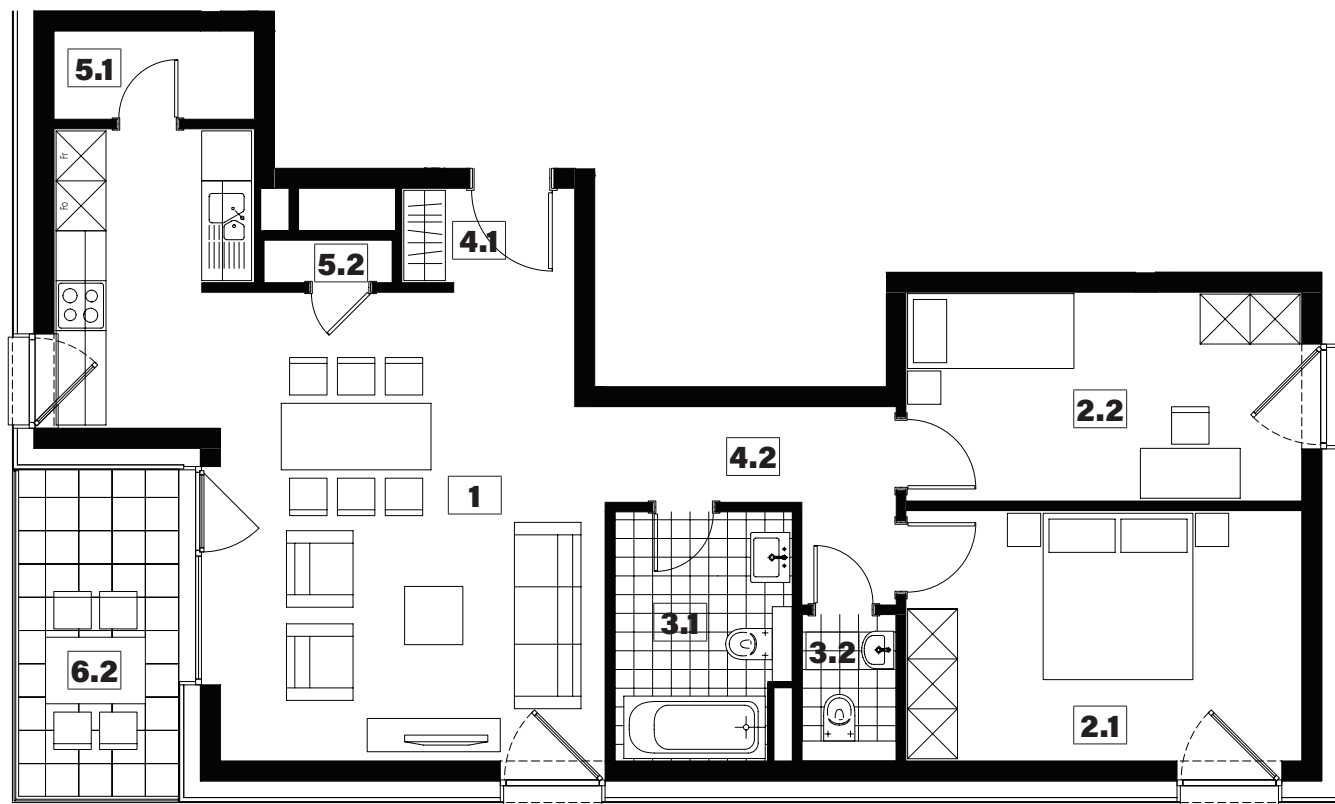
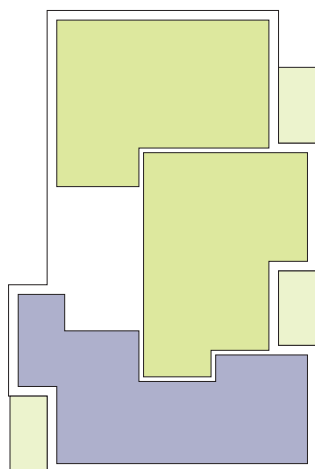


<b>1</b>	séjour/cuisine	<b>33,65m<sup>2</sup></b>
<b>2.1</b>	chambre	<b>14,35m<sup>2</sup></b>
<b>2.2</b>	chambre	<b>11,95m<sup>2</sup></b>
<b>3.1</b>	salle de bains	<b>6,10m<sup>2</sup></b>
<b>3.2</b>	w.c.	<b>2,00m<sup>2</sup></b>

<b>4.1</b>	hall	<b>2,35m<sup>2</sup></b>
<b>4.2</b>	couloir	<b>5,45m<sup>2</sup></b>
<b>5.1</b>	débarras	<b>2,55m<sup>2</sup></b>
<b>5.2</b>	technique	<b>0,80m<sup>2</sup></b>
<b>6.2</b>	balcon	<b>7,55m<sup>2</sup></b>

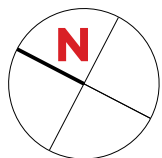
surface habitable

**79,20m<sup>2</sup>**



# APPARTEMENT TYPE

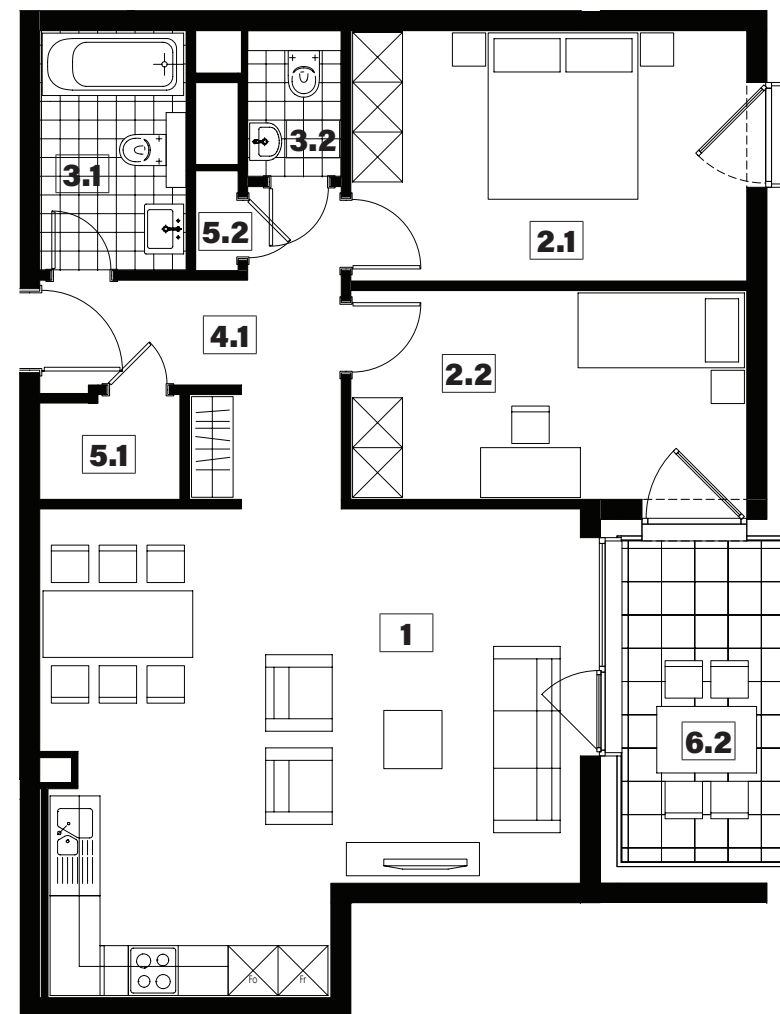
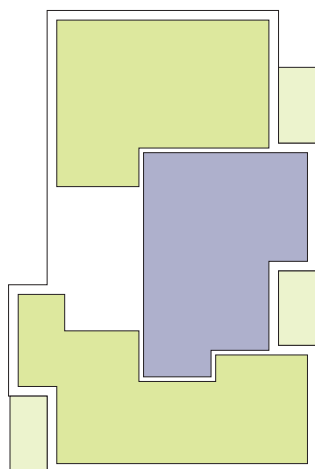
# 105



<b>1</b>	séjour/cuisine	<b>33,60m<sup>2</sup></b>
<b>2.1</b>	chambre	<b>14,35m<sup>2</sup></b>
<b>2.2</b>	chambre	<b>11,95m<sup>2</sup></b>
<b>3.1</b>	salle de bains	<b>5,10m<sup>2</sup></b>
<b>3.2</b>	w.c.	<b>2,00m<sup>2</sup></b>
<b>4.1</b>	hall	<b>8,40m<sup>2</sup></b>
<b>5.1</b>	débarras	<b>2,05m<sup>2</sup></b>
<b>5.2</b>	technique	<b>0,60m<sup>2</sup></b>
<b>6.2</b>	balcon	<b>7,40m<sup>2</sup></b>

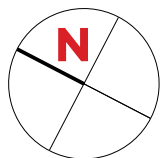
surface habitable

**78,05m<sup>2</sup>**



# APPARTEMENT TYPE

# 106

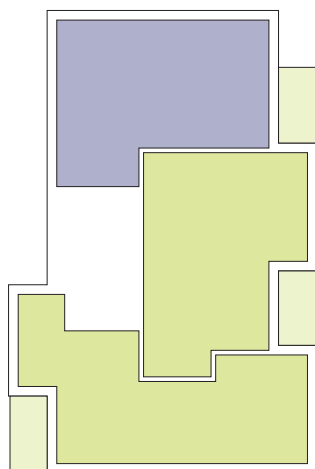


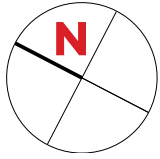
<b>1</b>	séjour/cuisine	<b>30,35m<sup>2</sup></b>
<b>2.1</b>	chambre	<b>14,40m<sup>2</sup></b>
<b>2.2</b>	chambre	<b>10,85m<sup>2</sup></b>
<b>3.1</b>	salle de bains	<b>5,75m<sup>2</sup></b>
<b>3.2</b>	w.c.	<b>2,55m<sup>2</sup></b>

<b>4.1</b>	hall	<b>10,55m<sup>2</sup></b>
<b>5.1</b>	débarras	<b>2,00m<sup>2</sup></b>
<b>5.2</b>	technique	<b>0,60m<sup>2</sup></b>
<b>6.2</b>	balcon	<b>7,55m<sup>2</sup></b>

surface habitable

**77,05m<sup>2</sup>**





# PLAN DE SITUATION



# NOTES

[illegible]

# NOTES

[illegible]

# NOTES

[illegible]





**SNHBM**

**Cindy Arendt**

Chargée des ventes

Tel.: +352 44 82 92 - 555

E-mail: [cindy.arendt@snhbm.lu](mailto:cindy.arendt@snhbm.lu)

 [snhbm.lu](https://snhbm.lu)

image non contractuelle