

Résidence DUMALIS



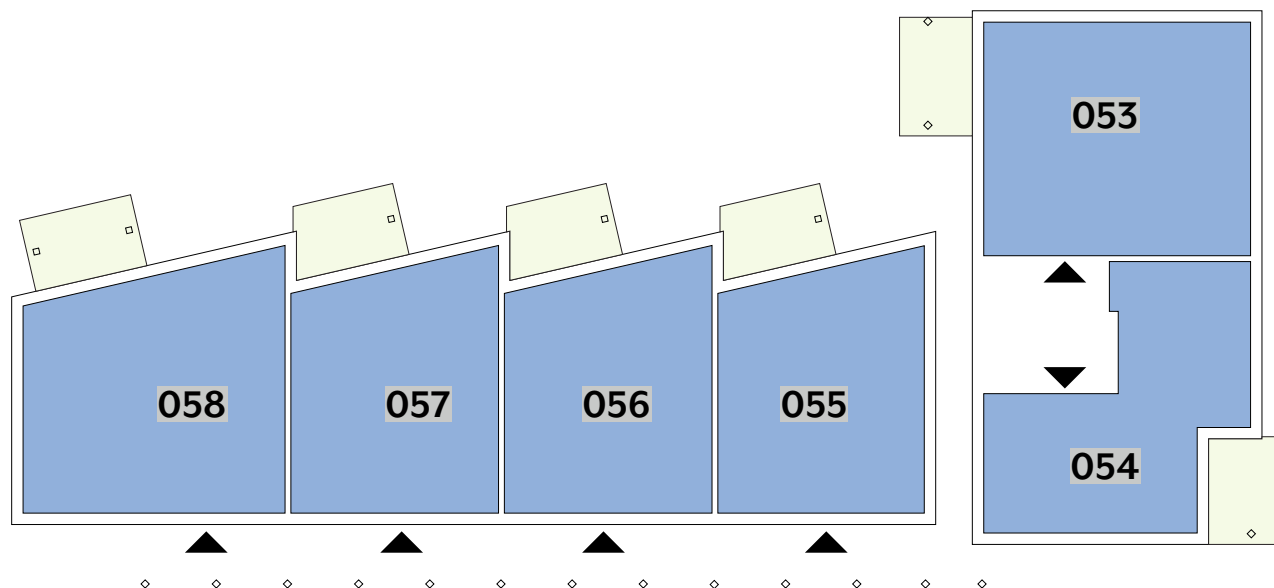
© SNHBM image non contractuelle

APPARTEMENTS

REZ-DE-CHAUSSÉE

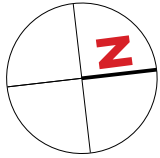
| Type | Surface Utile | surface terrasse | surface cave | prix de vente subventionné TVA 3% * |
|------------|----------------------|---------------------|---------------------|-------------------------------------|
| 053 | 104,73m ² | 13,60m ² | 12,50m ² | 340.907 € |
| 054 | 82,76m ² | 13,35m ² | 7,85m ² | 266.652 € |
| 055 | 83,63m ² | 13,35m ² | 7,85m ² | 277.145 € |
| 056 | 84,19m ² | 13,35m ² | 7,95m ² | 278.298 € |
| 057 | 84,19m ² | 13,35m ² | 7,90m ² | 278.298 € |
| 058 | 105,30m ² | 14,10m ² | 8,15m ² | 345.173 €** |

- les surfaces inscrites dans ce tableau peuvent subir de légères modifications dues aux nécessités techniques de la construction.
- surface utile = surface calculée à l'intérieur des murs extérieurs.
- * primes ACE sont déjà déduites (uniquement pour les acquéreurs bénéficiant d'une prime de construction de l'Etat.)
- ** primes ACE et remboursement TVA sont déjà déduits.



APPARTEMENT TYPE

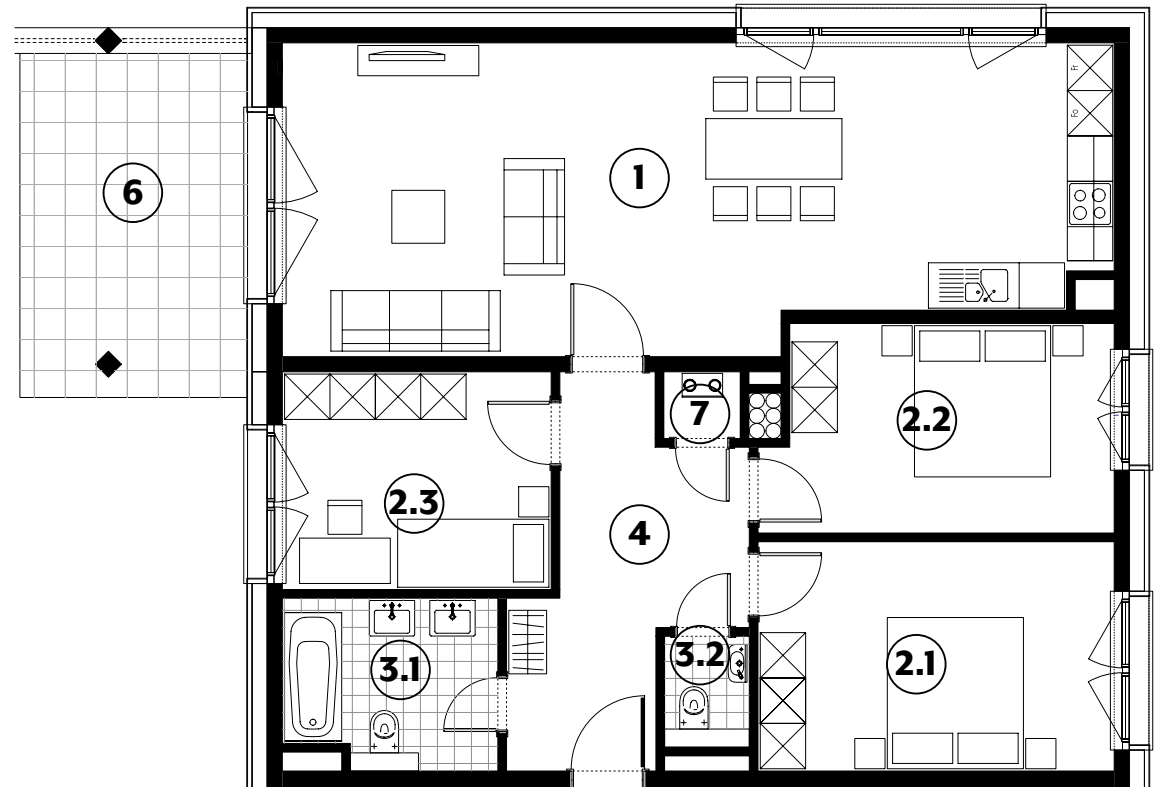
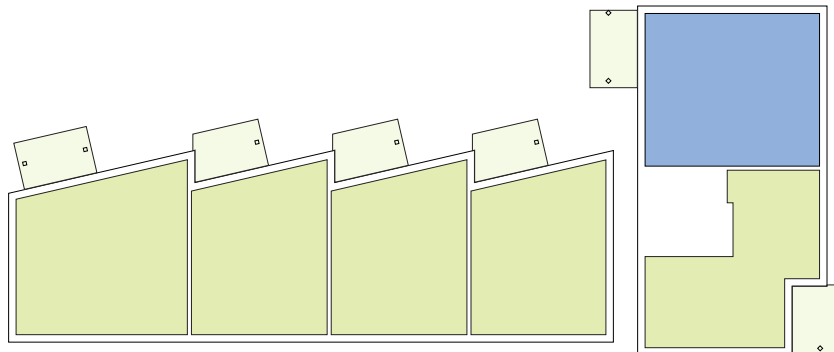
053



| | | |
|------------|----------------|---------------------------|
| 1 | séjour/cuisine | 42,60m² |
| 2.1 | chambre | 14,30m² |
| 2.2 | chambre | 12,35m² |
| 2.3 | chambre | 10,25m² |
| 3.1 | salle de bains | 6,20m² |
| 3.2 | w.c. | 1,65m² |
| 4 | hall | 11,25m² |
| 6 | terrasse | 13,60m² |
| 7 | technique | 0,90m² |

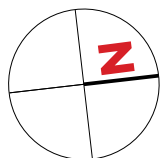
surface habitable

99,50m²



APPARTEMENT TYPE

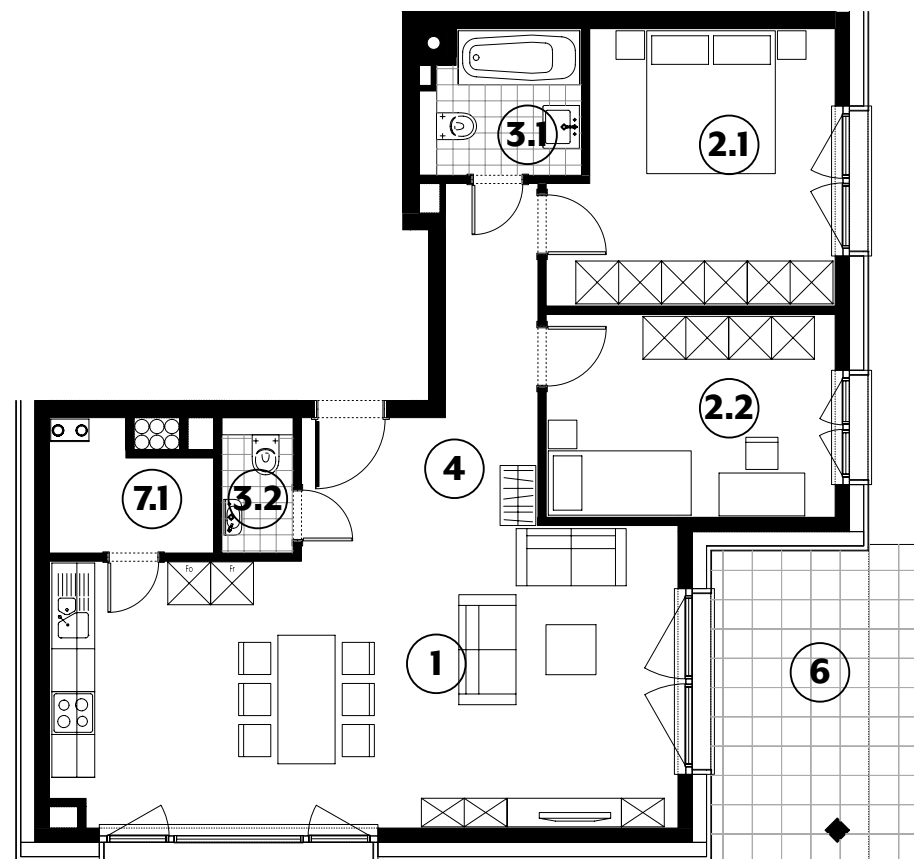
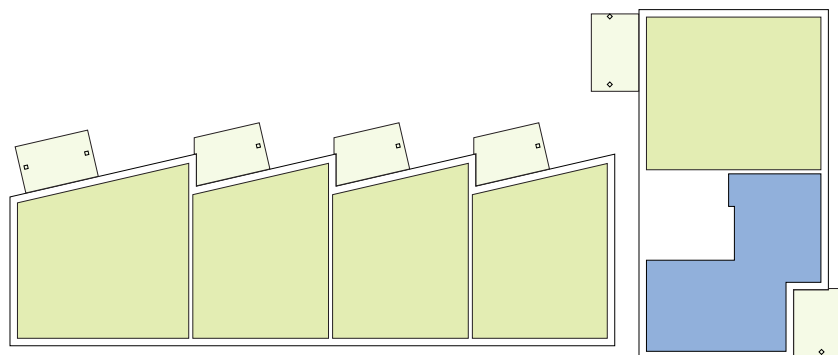
054



| | | |
|------------|-----------------|---------------------------|
| 1 | séjour/cuisine | 35,30m² |
| 2.1 | chambre | 14,40m² |
| 2.2 | chambre | 11,50m² |
| 3.1 | salle de bains | 4,05m² |
| 3.2 | w.c. | 1,90m² |
| 4 | hall | 9,25m² |
| 6 | terrasse | 13,35m² |
| 7.1 | techn./débarras | 3,65m² |

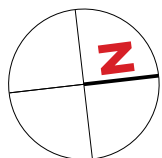
surface habitable

80,05m²



APPARTEMENT TYPE

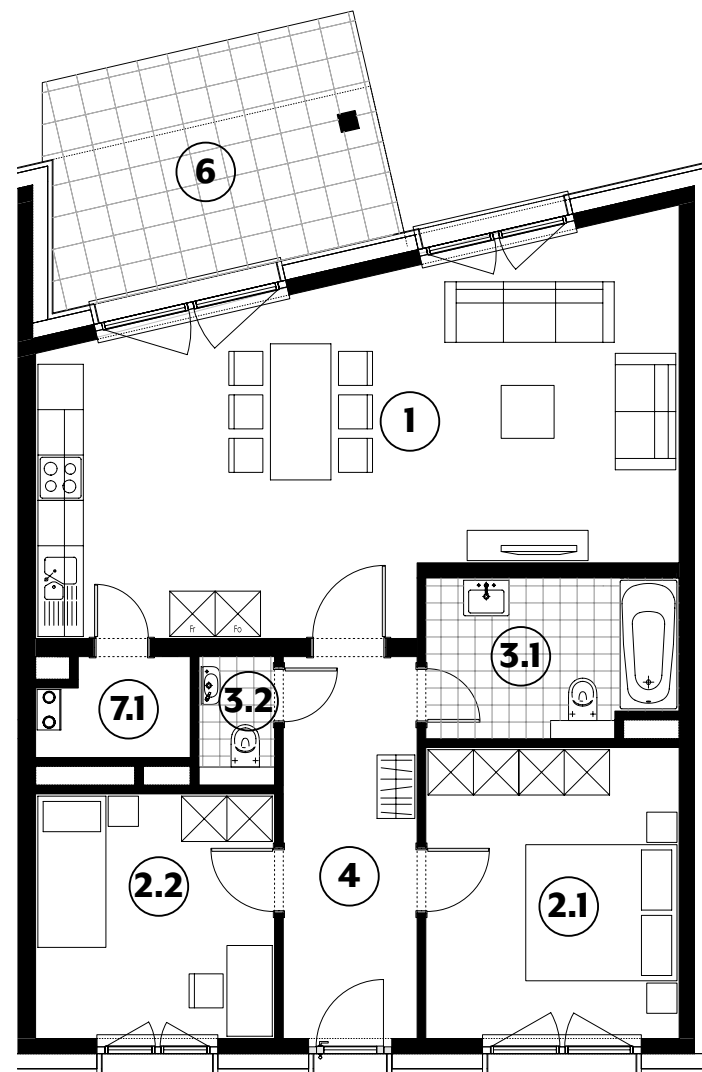
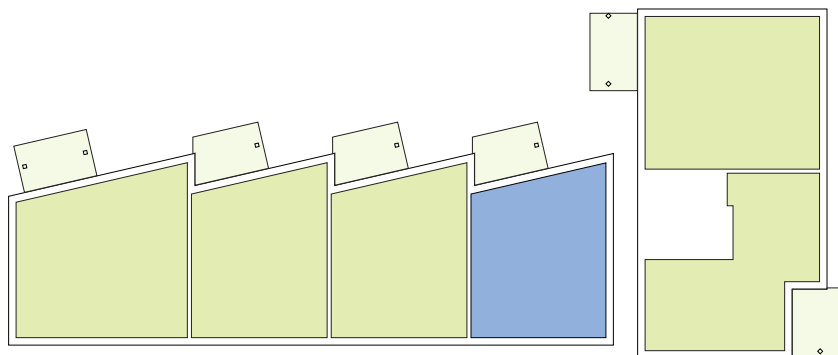
055



| | | |
|------------|-----------------|---------------------------|
| 1 | séjour/cuisine | 36,95m² |
| 2.1 | chambre | 12,90m² |
| 2.2 | chambre | 10,20m² |
| 3.1 | salle de bains | 6,80m² |
| 3.2 | w.c. | 1,70m² |
| 4 | hall | 8,95m² |
| 6 | terrasse | 13,35m² |
| 7.1 | techn./débarras | 2,50m² |

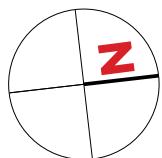
surface habitable

80,00m²



APPARTEMENT TYPE

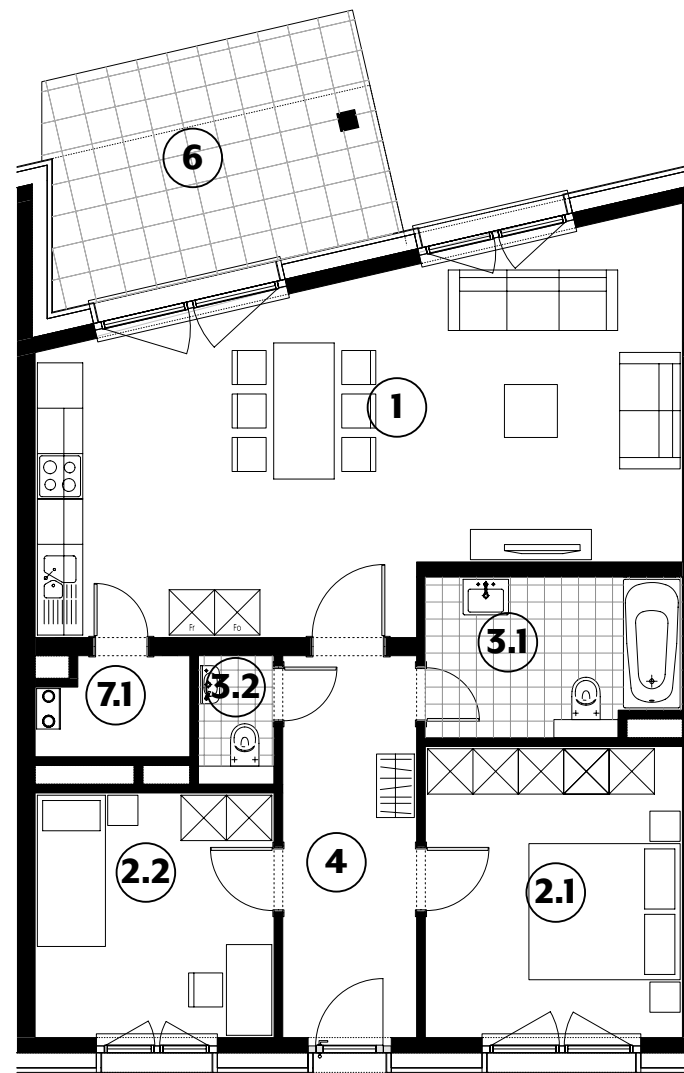
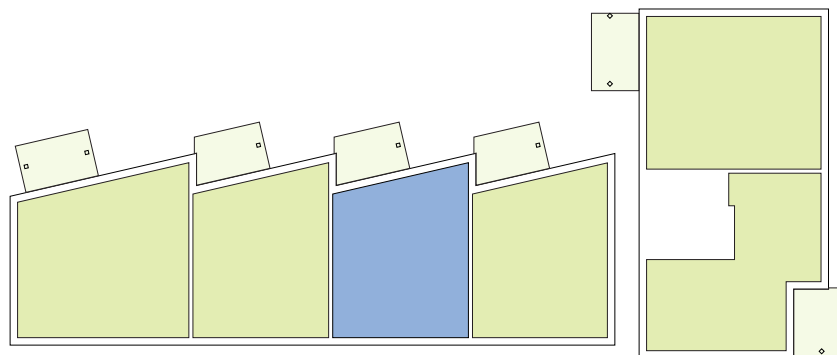
056



| | | |
|------------|-----------------|---------------------------|
| 1 | séjour/cuisine | 37,20m² |
| 2.1 | chambre | 13,10m² |
| 2.2 | chambre | 10,20m² |
| 3.1 | salle de bains | 6,90m² |
| 3.2 | w.c. | 1,70m² |
| 4 | hall | 8,95m² |
| 6 | terrasse | 13,35m² |
| 7.1 | techn./débarras | 2,50m² |

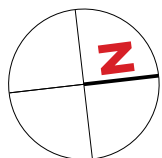
surface habitable

80,55m²



APPARTEMENT TYPE

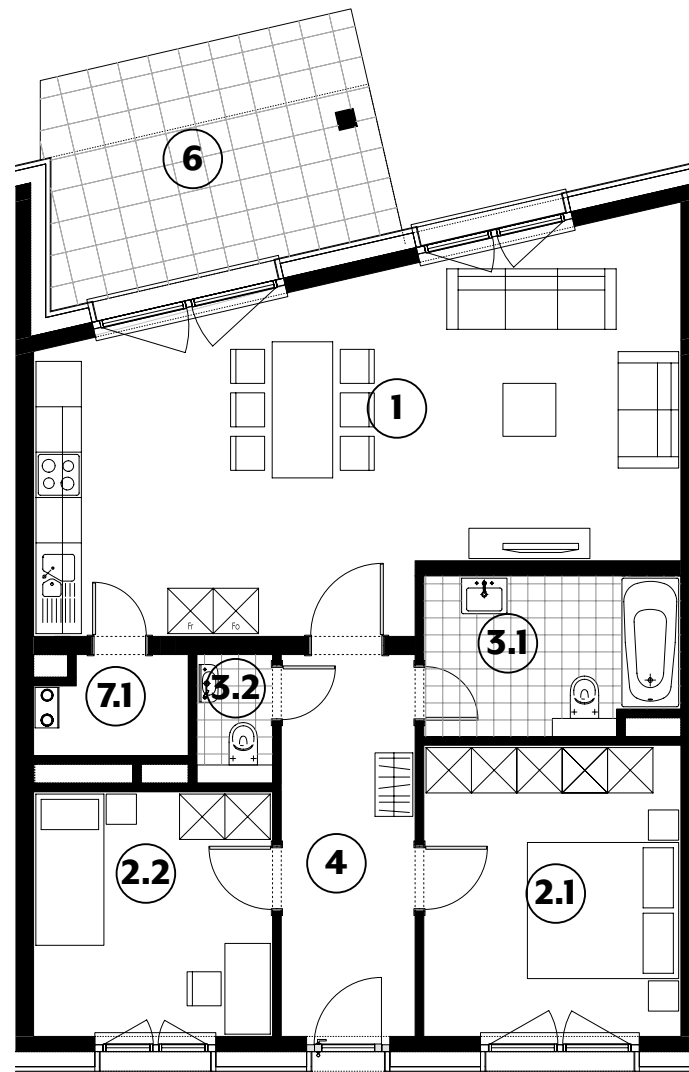
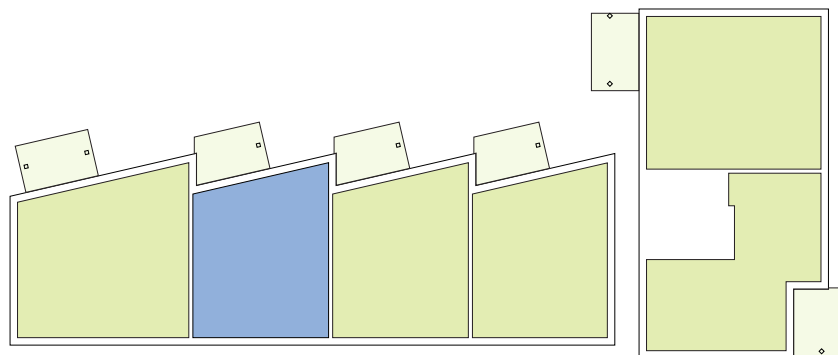
057



| | | |
|------------|-----------------|---------------------------|
| 1 | séjour/cuisine | 37,20m² |
| 2.1 | chambre | 13,10m² |
| 2.2 | chambre | 10,20m² |
| 3.1 | salle de bains | 6,90m² |
| 3.2 | w.c. | 1,70m² |
| 4 | hall | 8,95m² |
| 6 | terrasse | 13,35m² |
| 7.1 | techn./débarras | 2,50m² |

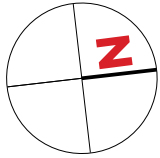
surface habitable

80,55m²



APPARTEMENT TYPE

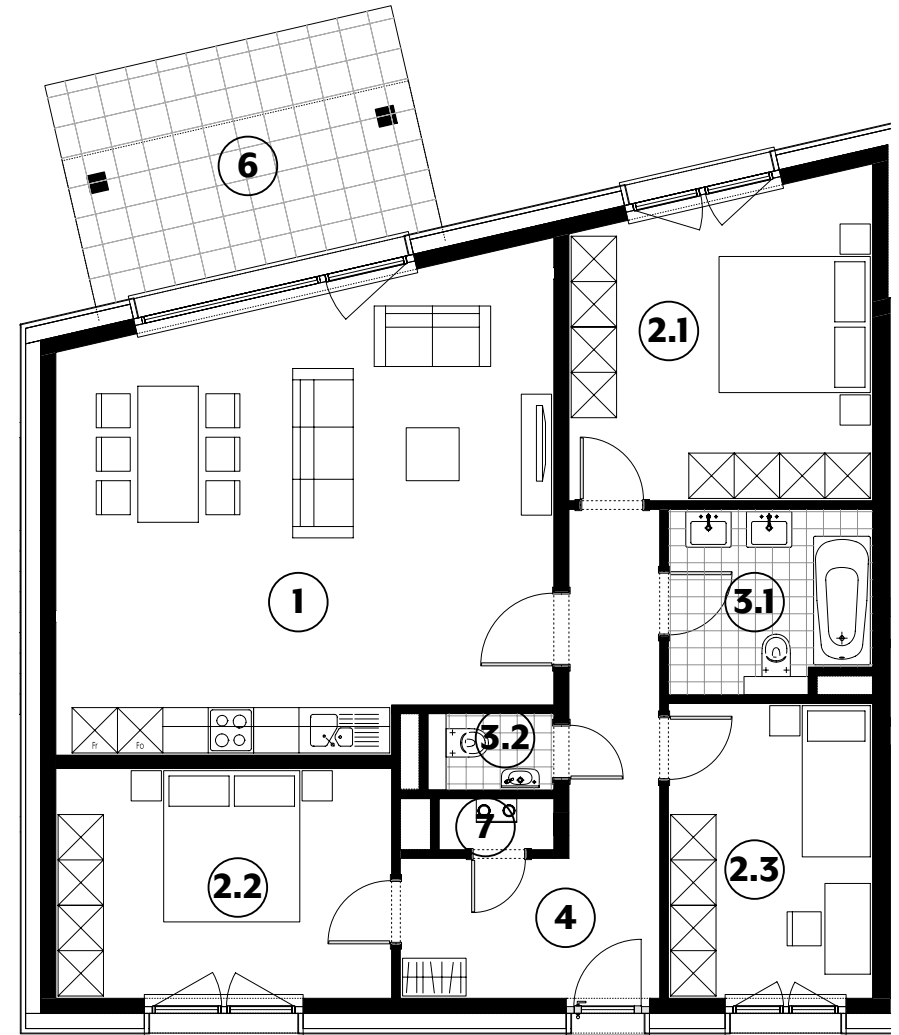
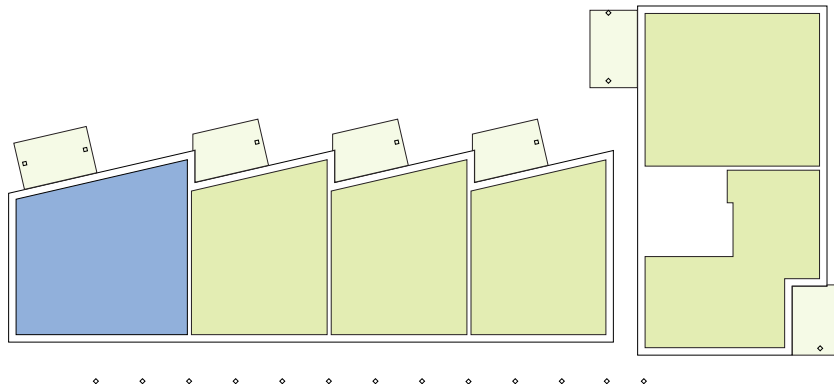
058



| | | |
|------------|----------------|---------------------------|
| 1 | séjour/cuisine | 38,65m² |
| 2.1 | chambre | 16,05m² |
| 2.2 | chambre | 13,50m² |
| 2.3 | chambre | 10,55m² |
| 3.1 | salle de bains | 6,30m² |
| 3.2 | w.c. | 1,70m² |
| 4 | hall | 11,90m² |
| 6 | terrasse | 14,10m² |
| 7 | technique | 1,00m² |

surface habitable

99,65m²

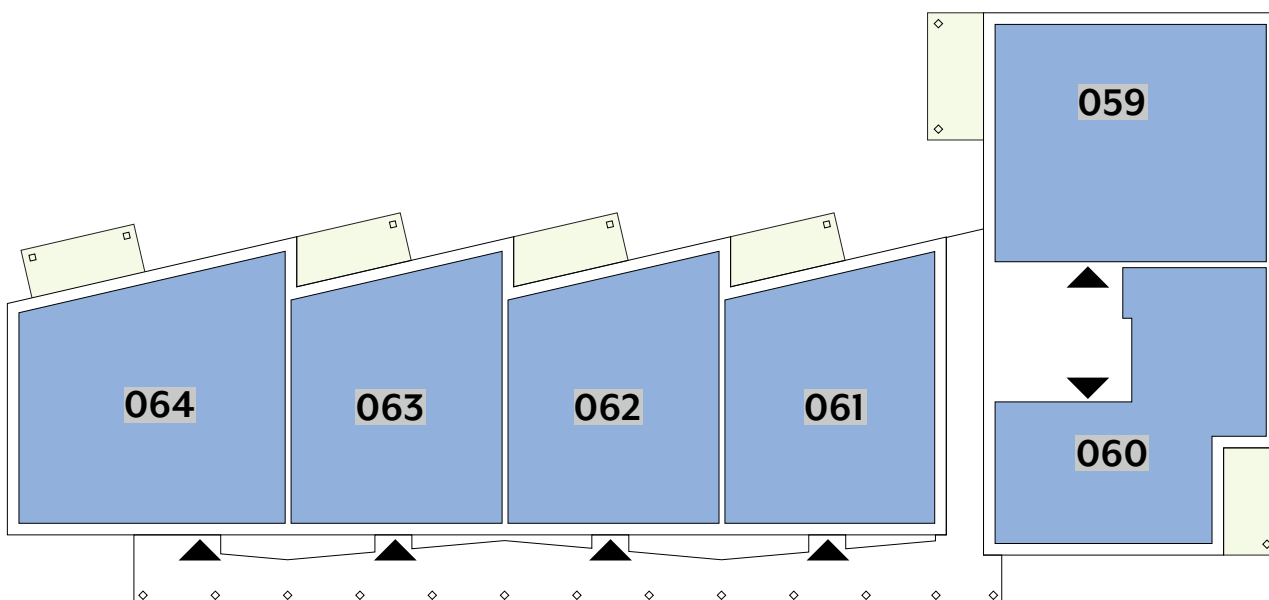


APPARTEMENTS

1^{ER} ÉTAGE

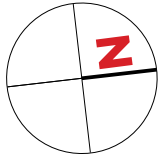
| Type | Surface Utile | surface terrasse | surface cave | prix de vente subventionné TVA 3% * |
|------|----------------------|---------------------|---------------------|-------------------------------------|
| 059 | 104,73m ² | 11,10m ² | 10,40m ² | 350.244 €** |
| 060 | 82,72m ² | 8,60m ² | 7,85m ² | 272.171 € |
| 061 | 83,63m ² | 8,60m ² | 7,30m ² | 282.099 € |
| 062 | 84,19m ² | 8,60m ² | 7,85m ² | 283.284 € |
| 063 | 84,19m ² | 8,60m ² | 7,85m ² | 283.284 € |
| 064 | 105,30m ² | 8,75m ² | 8,15m ² | 351.983 €** |

- les surfaces inscrites dans ce tableau peuvent subir de légères modifications dues aux nécessités techniques de la construction.
- surface utile = surface calculée à l'intérieur des murs extérieurs.
- * primes ACE sont déjà déduites (uniquement pour les acquéreurs bénéficiant d'une prime de construction de l'Etat.)
- ** primes ACE et remboursement TVA sont déjà déduits.



APPARTEMENT TYPE

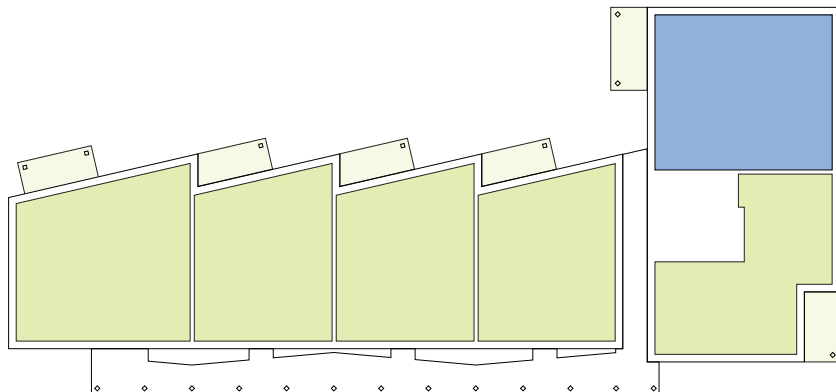
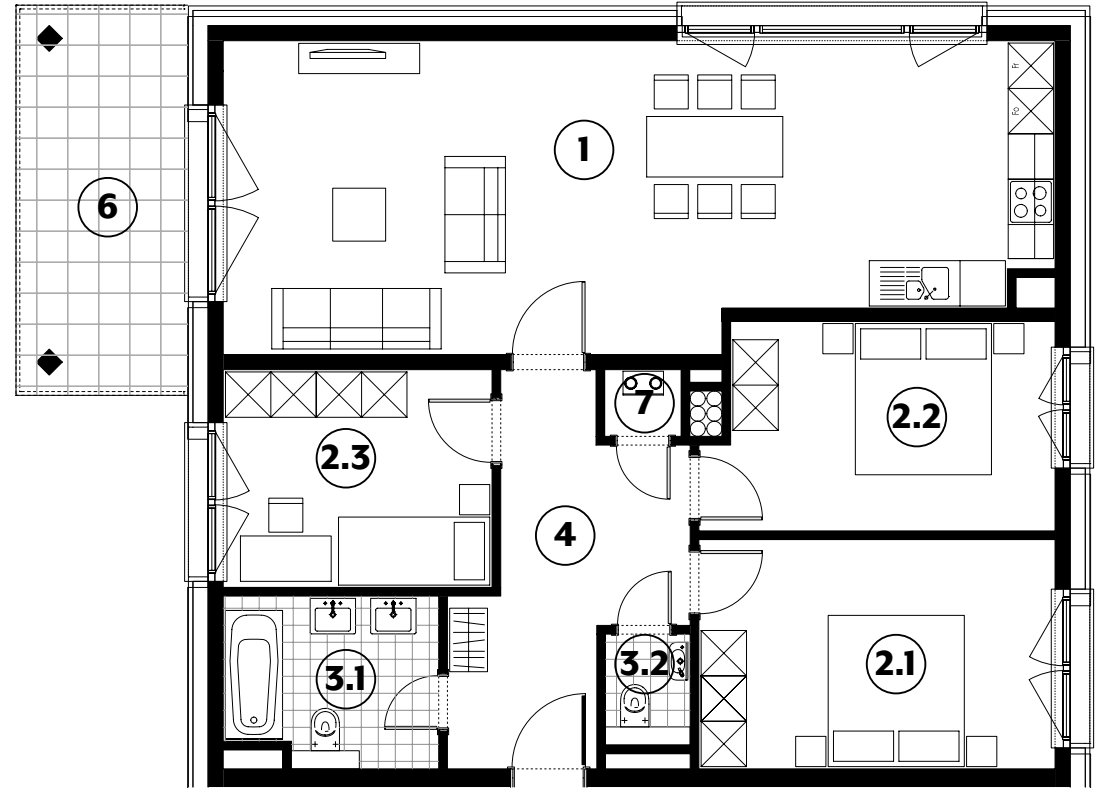
059



| | | |
|------------|----------------|---------------------------|
| 1 | séjour/cuisine | 42,60m² |
| 2.1 | chambre | 14,30m² |
| 2.2 | chambre | 12,35m² |
| 2.3 | chambre | 10,25m² |
| 3.1 | salle de bains | 6,20m² |
| 3.2 | w.c. | 1,65m² |
| 4 | hall | 11,25m² |
| 6 | terrasse | 11,10m² |
| 7 | technique | 0,90m² |

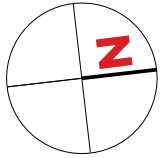
surface habitable

99,50m²



APPARTEMENT TYPE

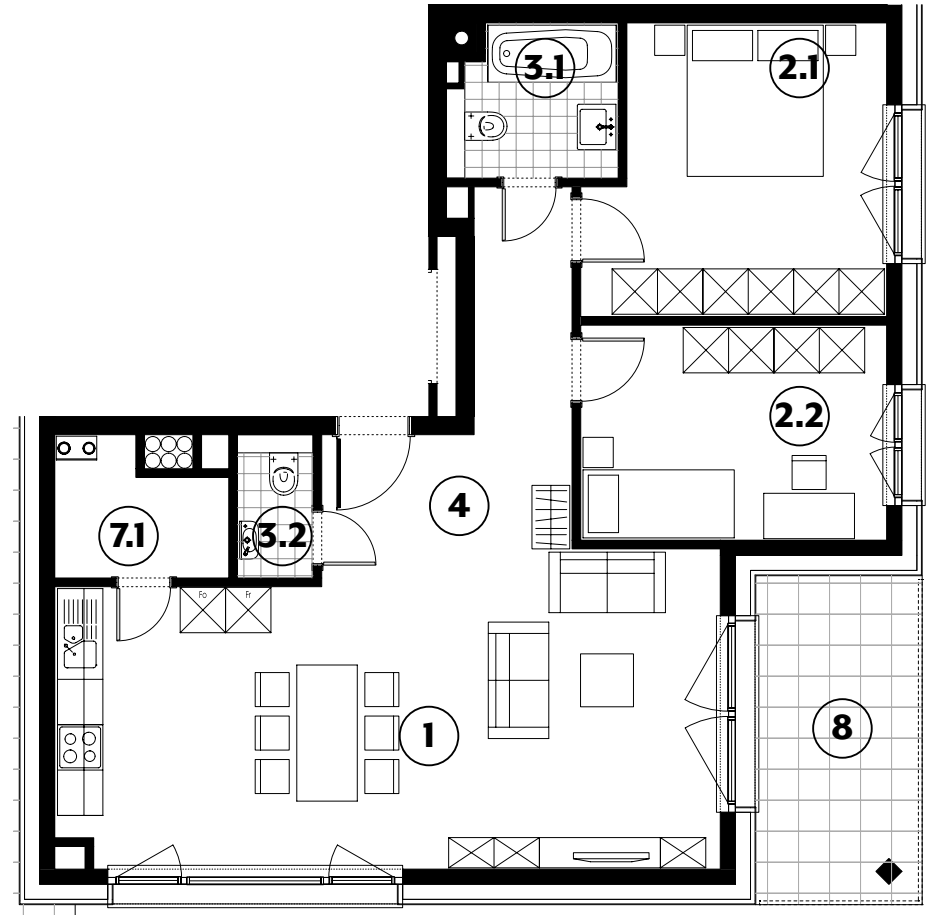
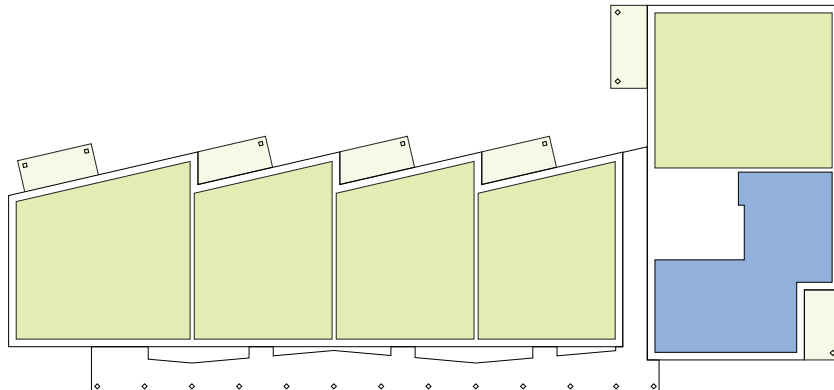
060



| | | |
|------------|----------------|---------------------------|
| 1 | séjour/cuisine | 35,30m² |
| 2.1 | chambre | 14,40m² |
| 2.2 | chambre | 11,50m² |
| 3.1 | salle de bains | 4,05m² |
| 3.2 | w.c. | 1,90m² |
| 4 | hall | 9,25m² |
| 7.1 | techn./débaras | 3,65m² |
| 8 | balcon | 9,20m² |

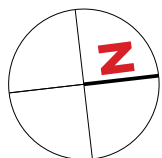
surface habitable

80,05m²



APPARTEMENT TYPE

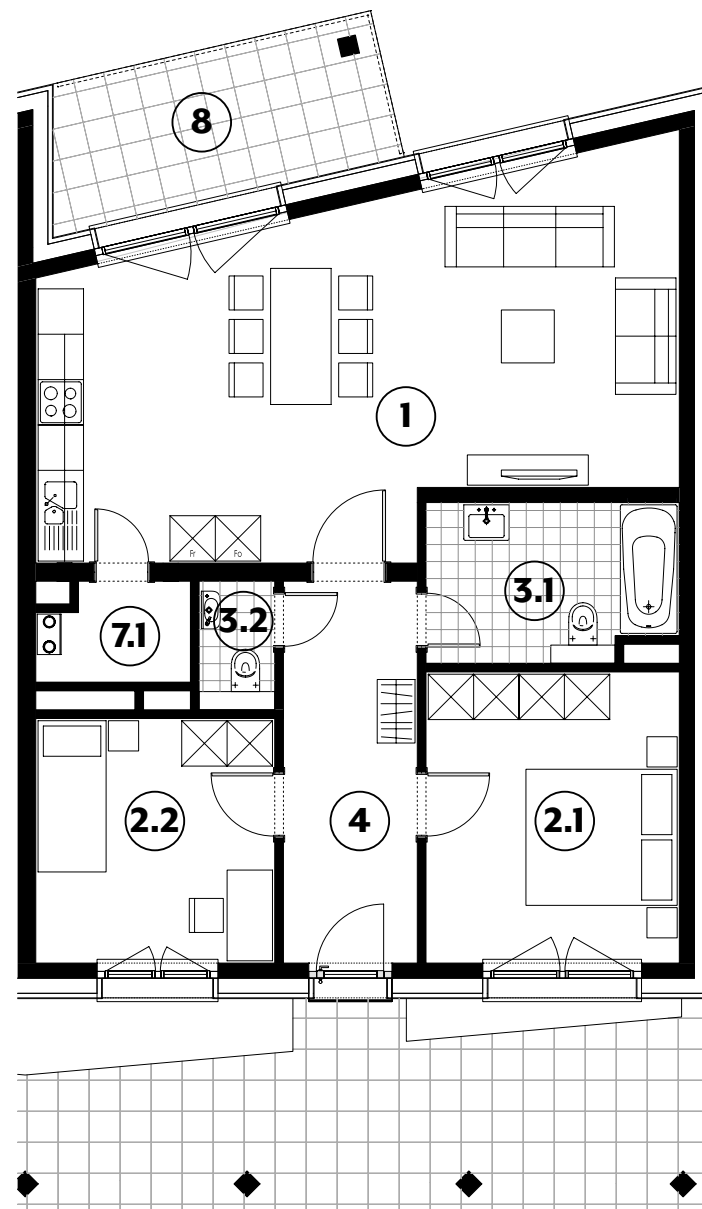
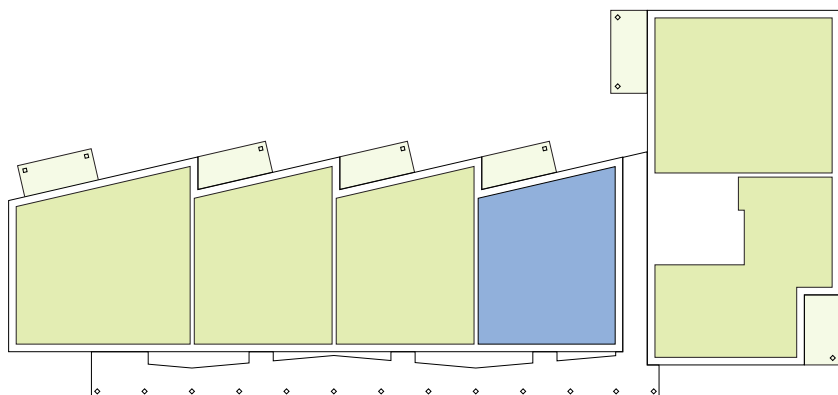
061



| | | |
|------------|-----------------|---------------------------|
| 1 | séjour/cuisine | 36,95m² |
| 2.1 | chambre | 12,90m² |
| 2.2 | chambre | 10,20m² |
| 3.1 | salle de bains | 6,80m² |
| 3.2 | w.c. | 1,70m² |
| 4 | hall | 8,95m² |
| 7.1 | techn./débarras | 2,50m² |
| 8 | balcon | 8,60m² |

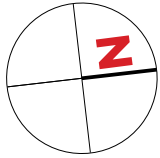
surface habitable

80,00m²



APPARTEMENT TYPE

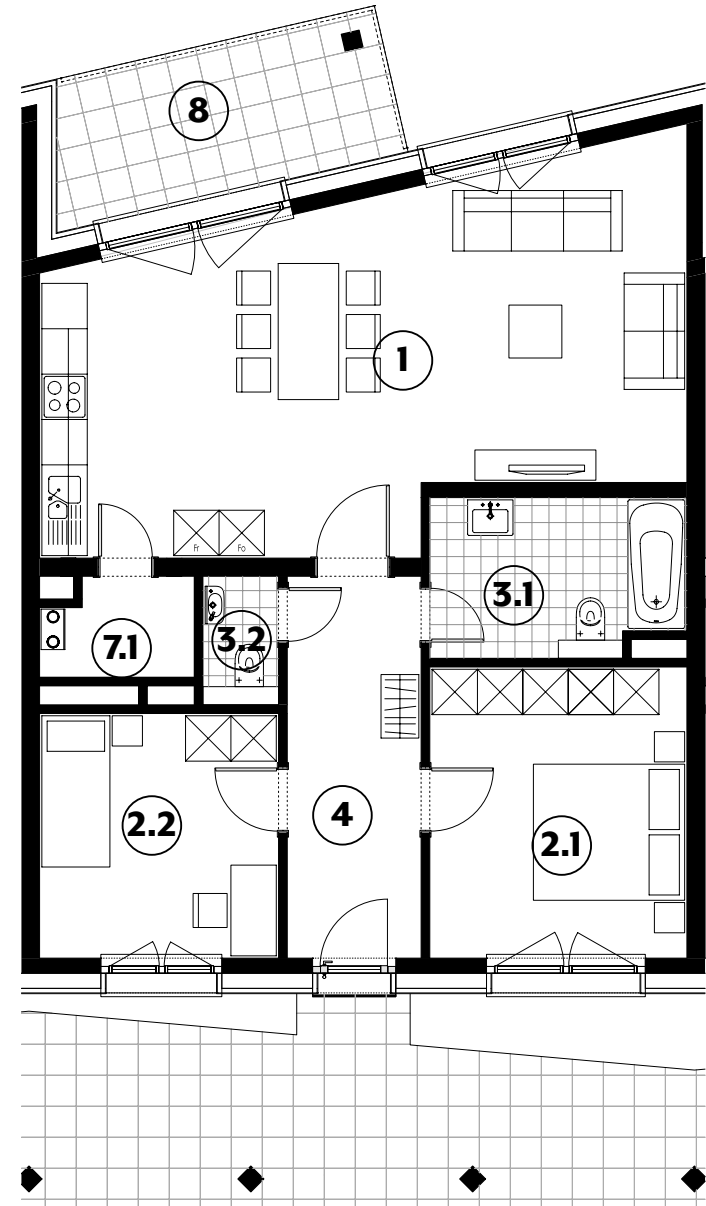
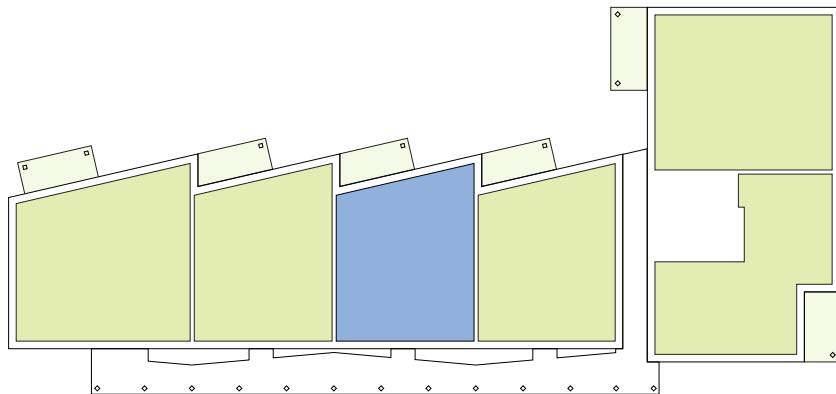
062



| | | |
|------------|-----------------|---------------------------|
| 1 | séjour/cuisine | 37,20m² |
| 2.1 | chambre | 13,10m² |
| 2.2 | chambre | 10,20m² |
| 3.1 | salle de bains | 6,90m² |
| 3.2 | w.c. | 1,70m² |
| 4 | hall | 8,95m² |
| 7.1 | techn./débarras | 2,50m² |
| 8 | balcon | 8,60m² |

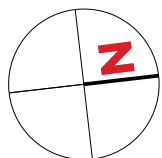
surface habitable

80,55m²



APPARTEMENT TYPE

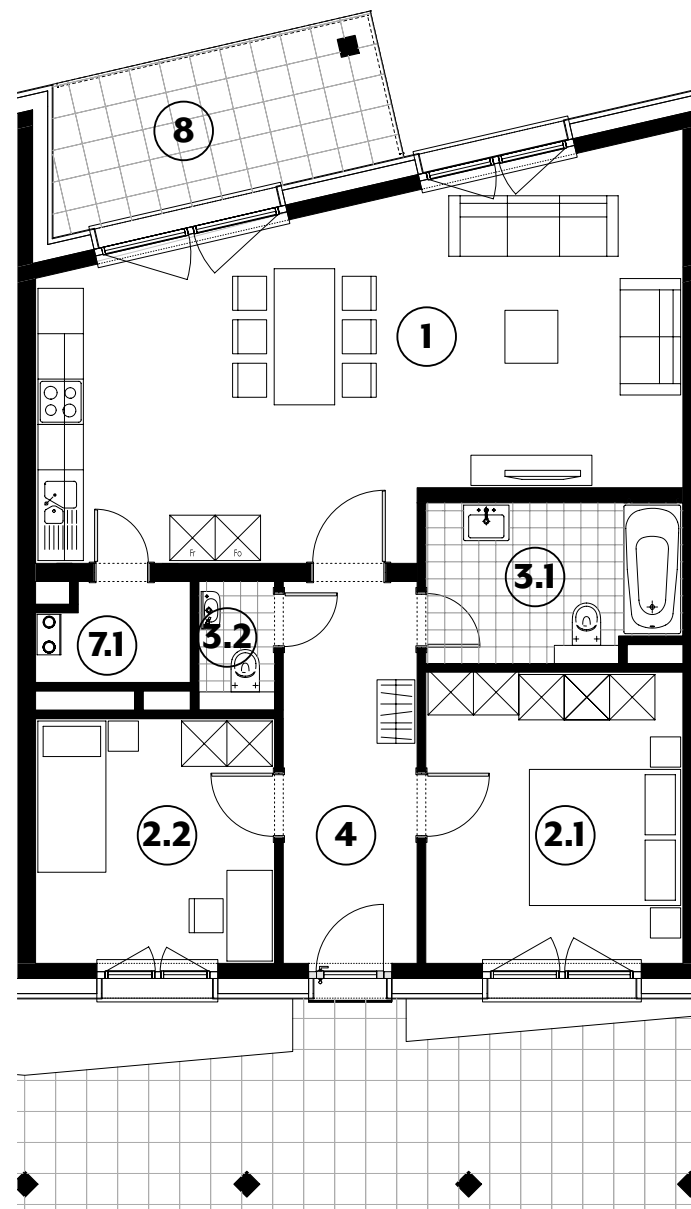
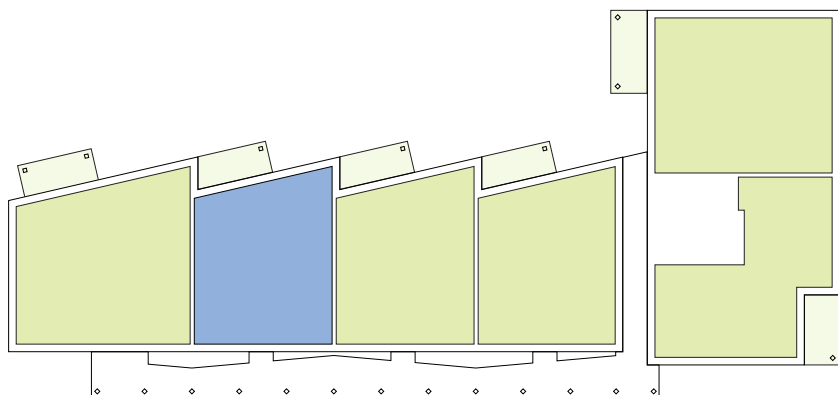
063



| | | |
|------------|-----------------|---------------------------|
| 1 | séjour/cuisine | 37,20m² |
| 2.1 | chambre | 13,10m² |
| 2.2 | chambre | 10,20m² |
| 3.1 | salle de bains | 6,90m² |
| 3.2 | w.c. | 1,70m² |
| 4 | hall | 8,95m² |
| 7.1 | techn./débarras | 2,50m² |
| 8 | balcon | 8,60m² |

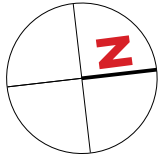
surface habitable

80,55m²



APPARTEMENT TYPE

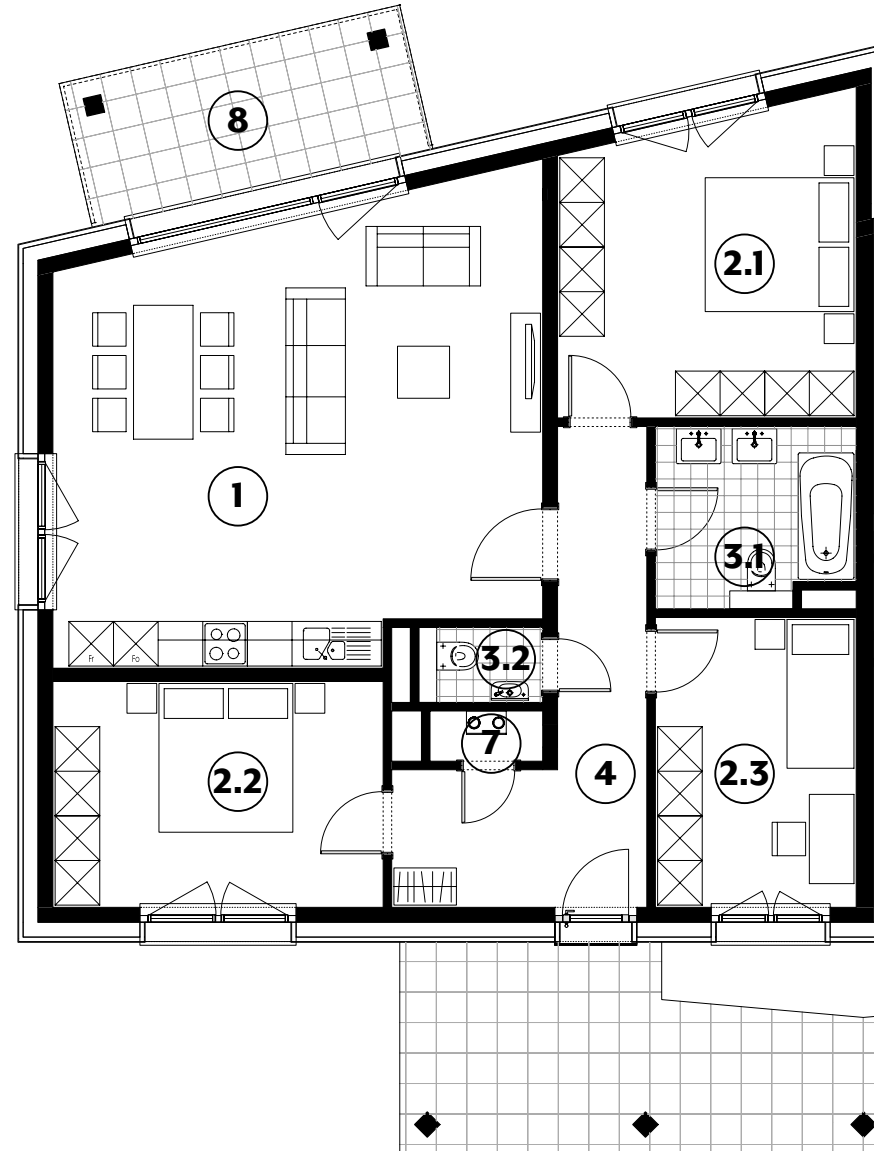
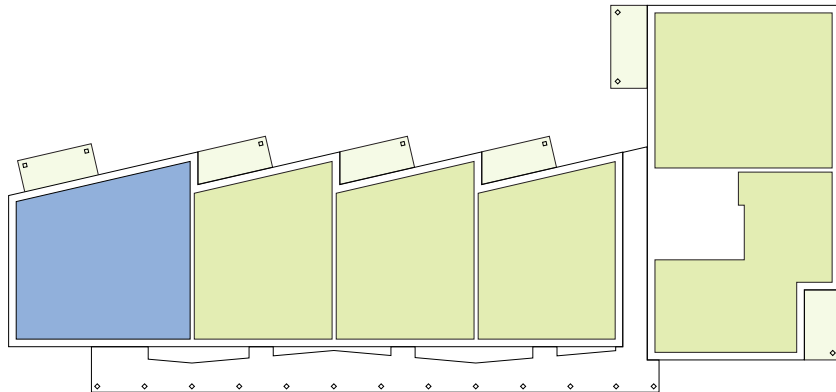
064



| | | |
|------------|----------------|---------------------------|
| 1 | séjour/cuisine | 38,65m² |
| 2.1 | chambre | 16,05m² |
| 2.2 | chambre | 13,50m² |
| 2.3 | chambre | 10,55m² |
| 3.1 | salle de bains | 6,30m² |
| 3.2 | w.c. | 1,70m² |
| 4 | hall | 11,90m² |
| 7 | technique | 1,00m² |
| 8 | balcon | 8,75m² |

surface habitable

99,65m²

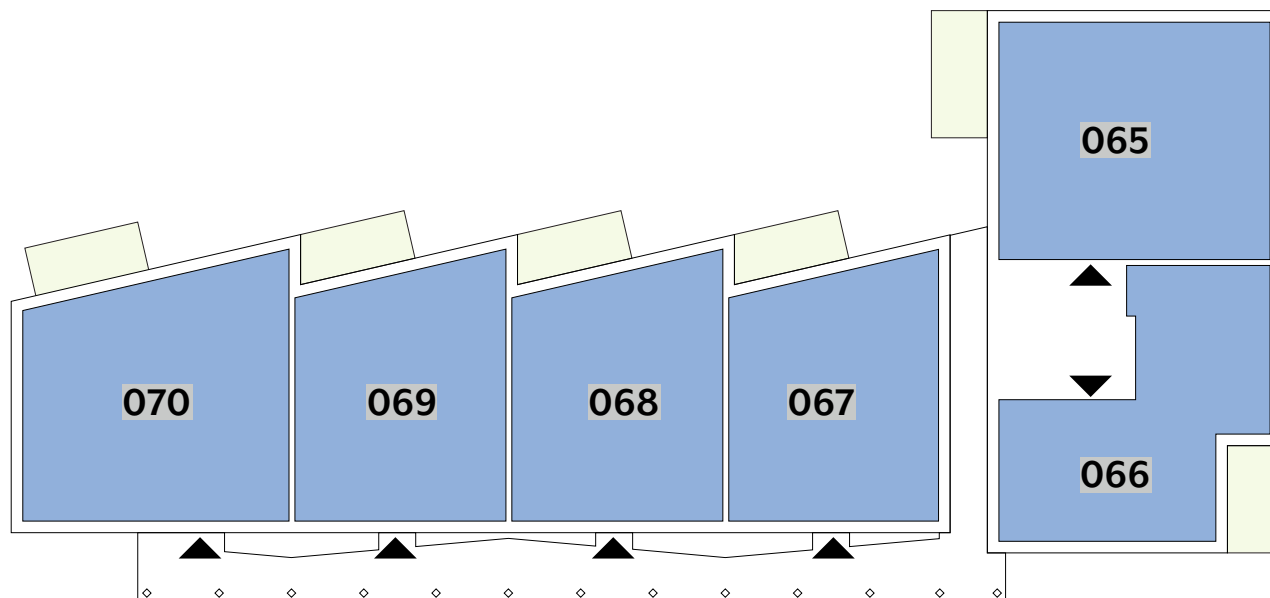


APPARTEMENTS

2^{ÈME} ÉTAGE

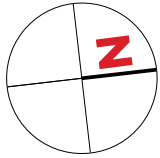
| Type | Surface Utile | surface terrasse | surface cave | prix de vente subventionné TVA 3% * |
|------|----------------------|---------------------|--------------------|-------------------------------------|
| 065 | 104,73m ² | 13,60m ² | 8,15m ² | 356.907 €** |
| 066 | 82,76m ² | 13,35m ² | 7,85m ² | 276.722 € |
| 067 | 83,63m ² | 13,35m ² | 7,30m ² | 286.998 € |
| 068 | 84,19m ² | 13,35m ² | 7,75m ² | 288.213 € |
| 069 | 84,19m ² | 13,35m ² | 7,75m ² | 288.213 € |
| 070 | 105,30m ² | 14,10m ² | 8,05m ² | 358.969 €** |

- les surfaces inscrites dans ce tableau peuvent subir de légères modifications dues aux nécessités techniques de la construction.
- surface utile = surface calculée à l'intérieur des murs extérieurs.
- * primes ACE sont déjà déduites (uniquement pour les acquéreurs bénéficiant d'une prime de construction de l'Etat.)
- ** primes ACE et remboursement TVA sont déjà déduits.



APPARTEMENT TYPE

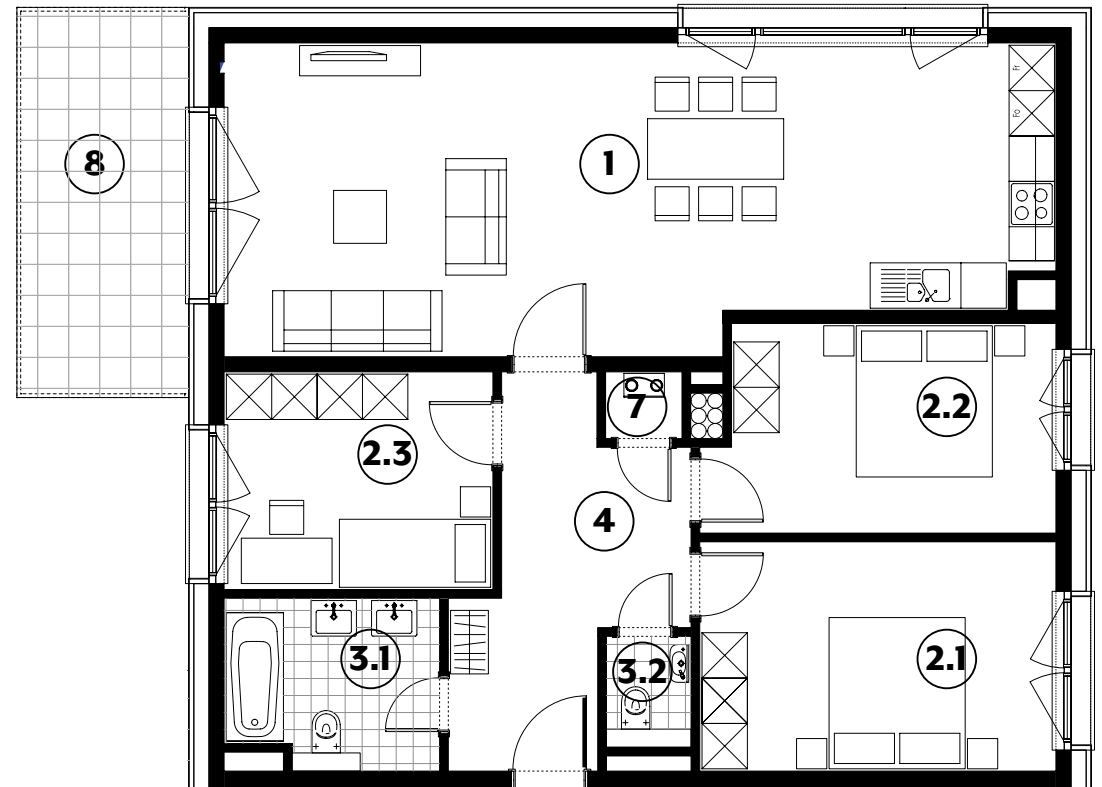
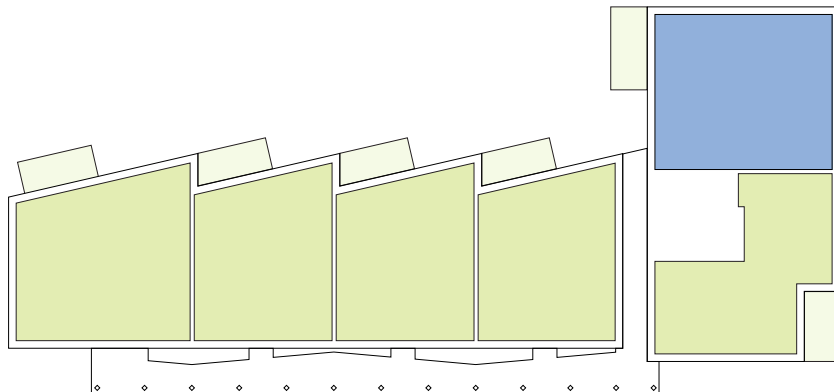
065



| | | |
|------------|----------------|---------------------------|
| 1 | séjour/cuisine | 42,60m² |
| 2.1 | chambre | 14,30m² |
| 2.2 | chambre | 12,35m² |
| 2.3 | chambre | 10,25m² |
| 3.1 | salle de bains | 6,20m² |
| 3.2 | w.c. | 1,65m² |
| 4 | hall | 11,25m² |
| 7 | technique | 0,90m² |
| 8 | balcon | 11,20m² |

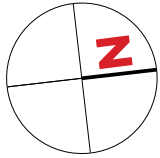
surface habitable

99,50m²



APPARTEMENT TYPE

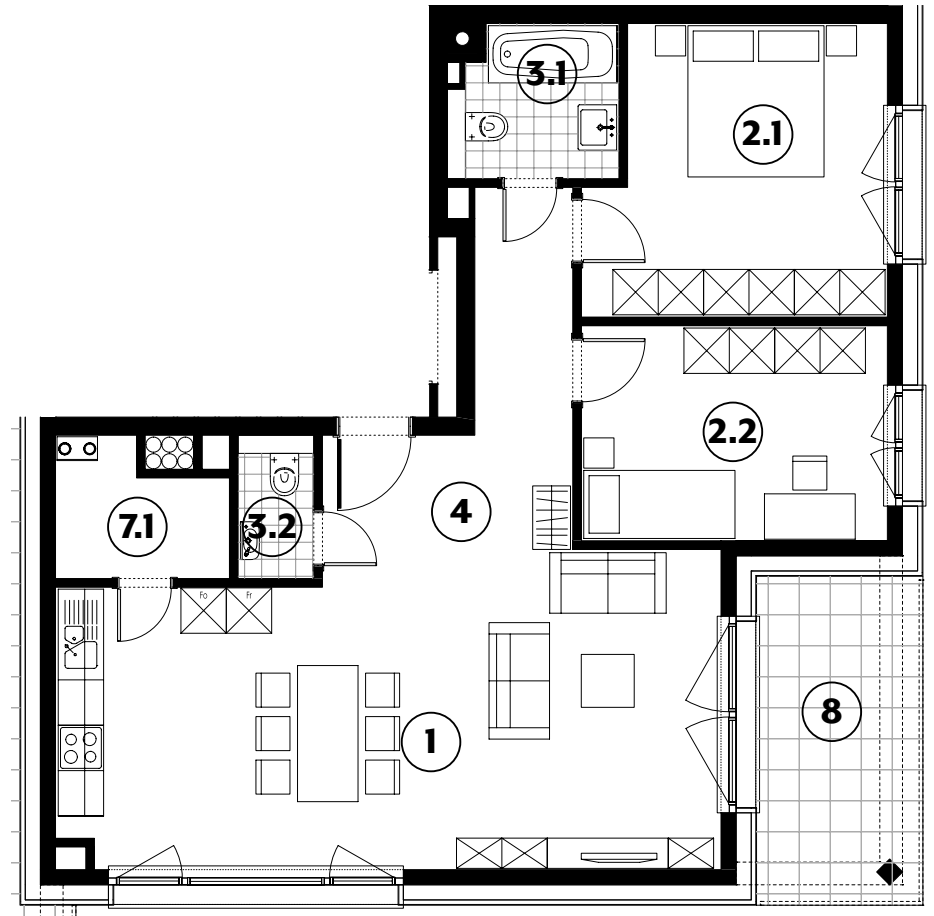
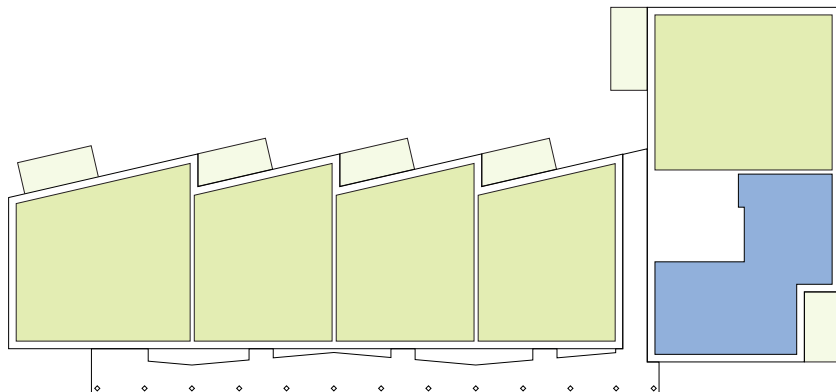
066



| | | |
|------------|-----------------|---------------------------|
| 1 | séjour/cuisine | 35,30m² |
| 2.1 | chambre | 14,40m² |
| 2.2 | chambre | 11,50m² |
| 3.1 | salle de bains | 4,05m² |
| 3.2 | w.c. | 1,90m² |
| 4 | hall | 9,25m² |
| 7.1 | techn./débarras | 3,65m² |
| 8 | balcon | 9,20m² |

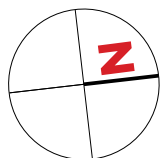
surface habitable

80,05m²



APPARTEMENT TYPE

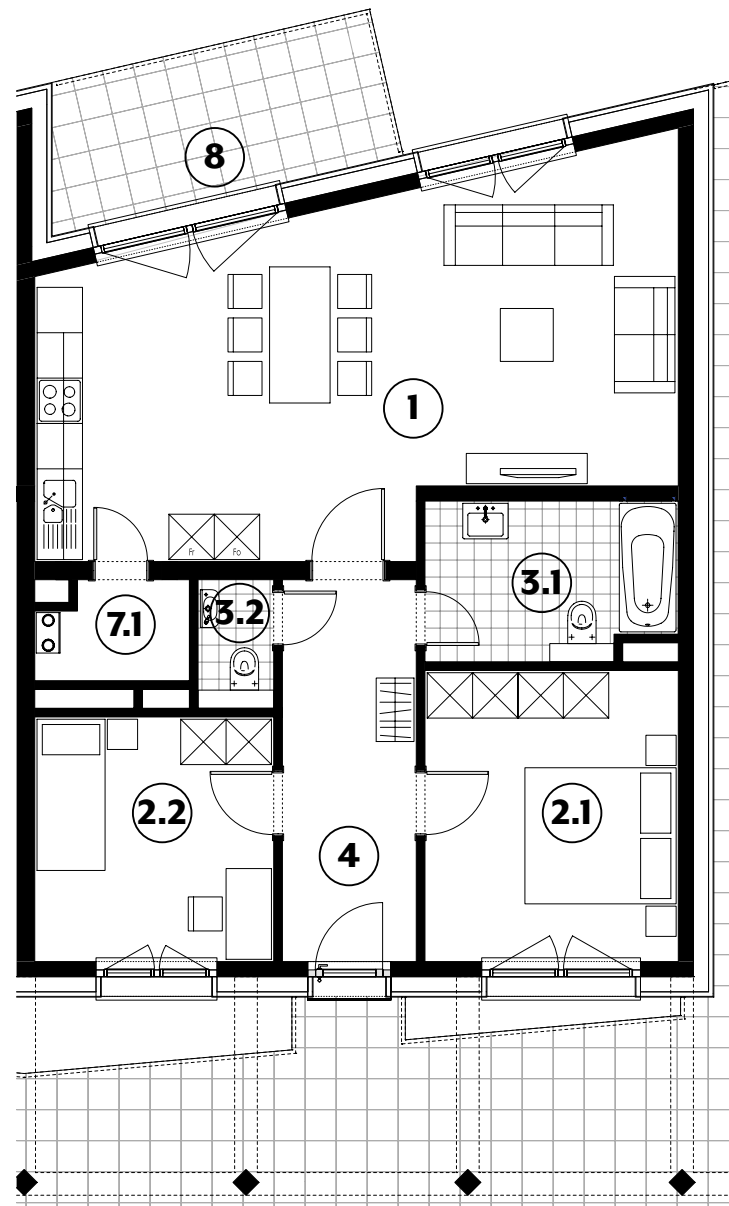
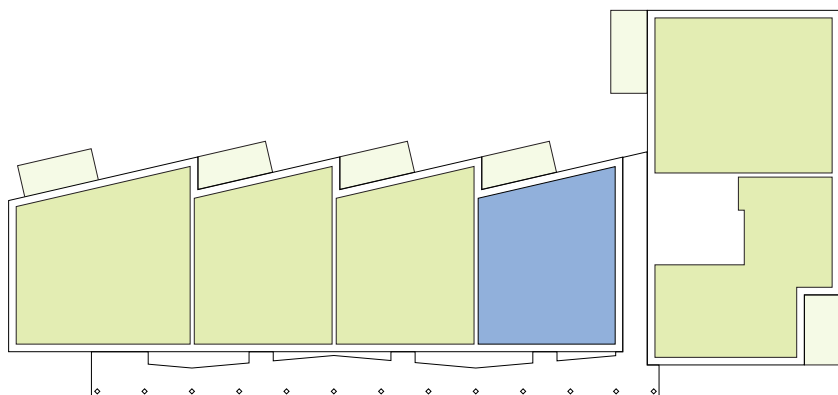
067



| | | |
|------------|-----------------|---------------------------|
| 1 | séjour/cuisine | 36,95m² |
| 2.1 | chambre | 12,90m² |
| 2.2 | chambre | 10,20m² |
| 3.1 | salle de bains | 6,80m² |
| 3.2 | w.c. | 1,70m² |
| 4 | hall | 8,95m² |
| 7.1 | techn./débarras | 2,50m² |
| 8 | balcon | 8,65m² |

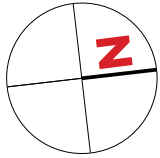
surface habitable

80,00m²



APPARTEMENT TYPE

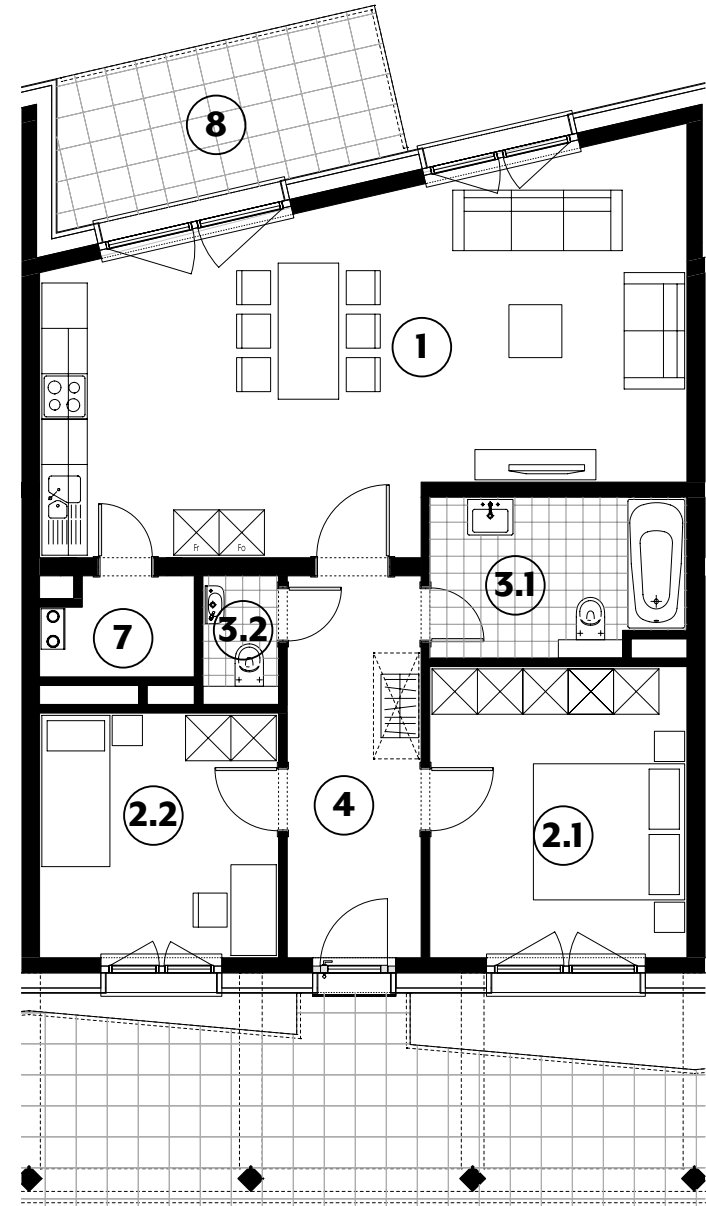
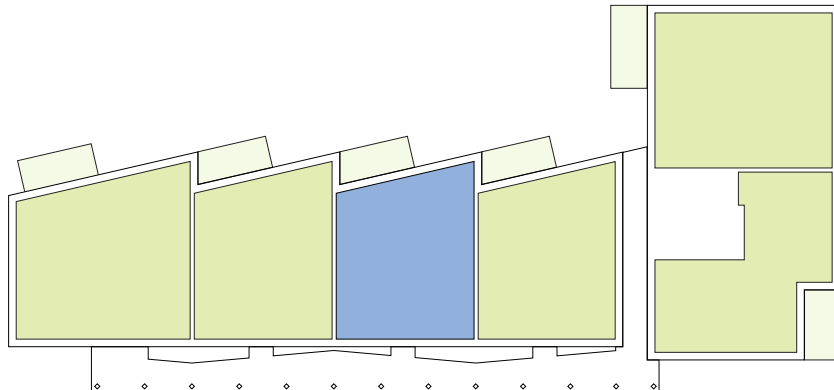
068



| | | |
|------------|-----------------|---------------------------|
| 1 | séjour/cuisine | 37,20m² |
| 2.1 | chambre | 13,10m² |
| 2.2 | chambre | 10,20m² |
| 3.1 | salle de bains | 6,90m² |
| 3.2 | w.c. | 1,70m² |
| 4 | hall | 8,95m² |
| 7.1 | techn./débarras | 2,50m² |
| 8 | balcon | 8,65m² |

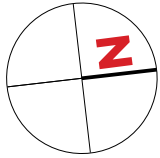
surface habitable

80,55m²



APPARTEMENT TYPE

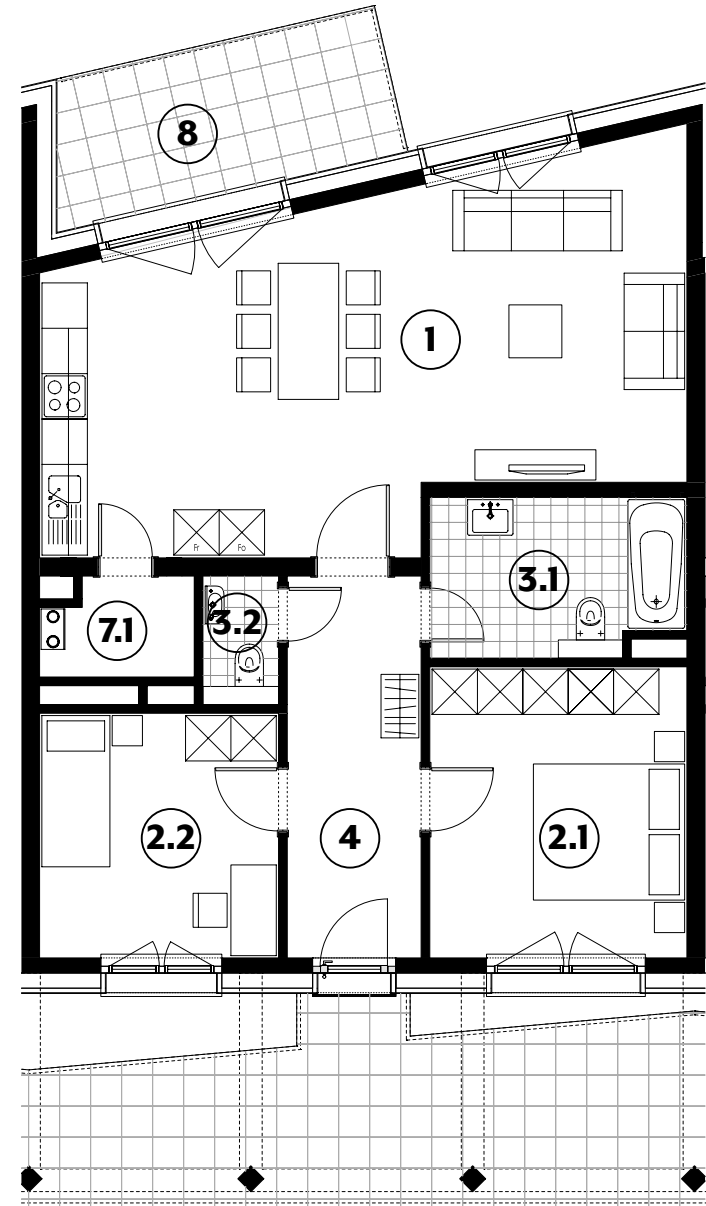
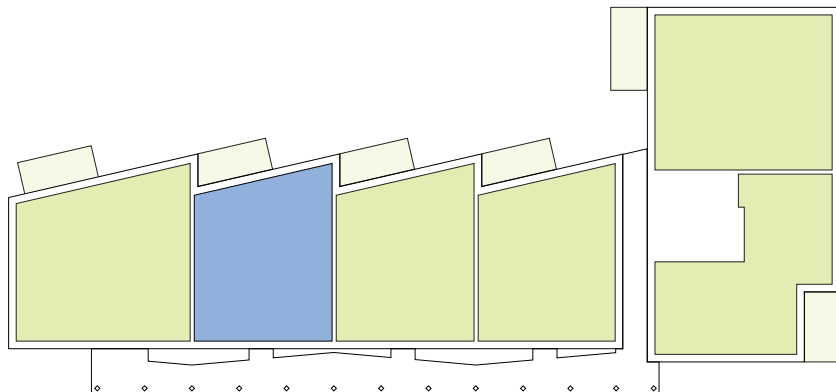
069



| | | |
|------------|-----------------|---------------------------|
| 1 | séjour/cuisine | 37,20m² |
| 2.1 | chambre | 13,10m² |
| 2.2 | chambre | 10,20m² |
| 3.1 | salle de bains | 6,90m² |
| 3.2 | w.c. | 1,70m² |
| 4 | hall | 8,95m² |
| 7.1 | techn./débarras | 2,50m² |
| 8 | balcon | 8,65m² |

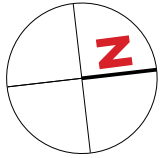
surface habitable

80,55m²



APPARTEMENT TYPE

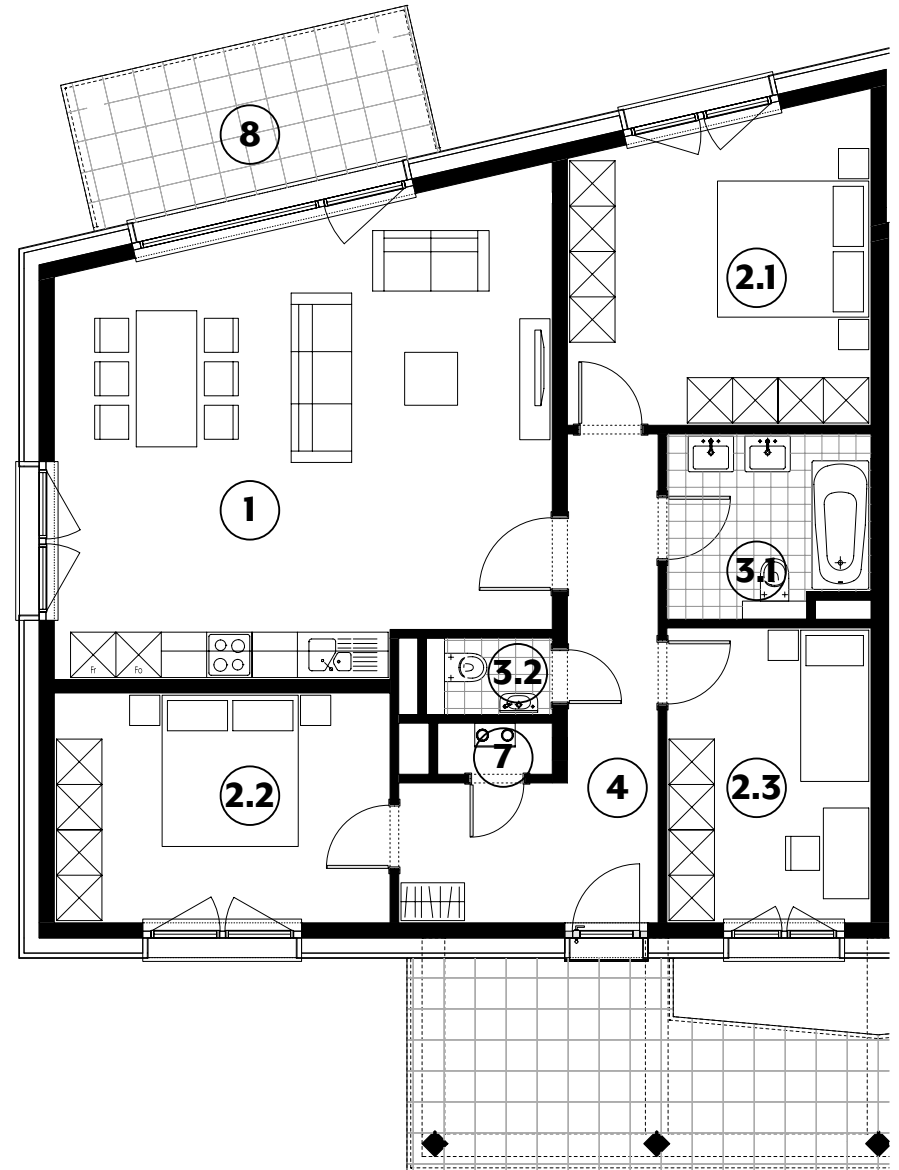
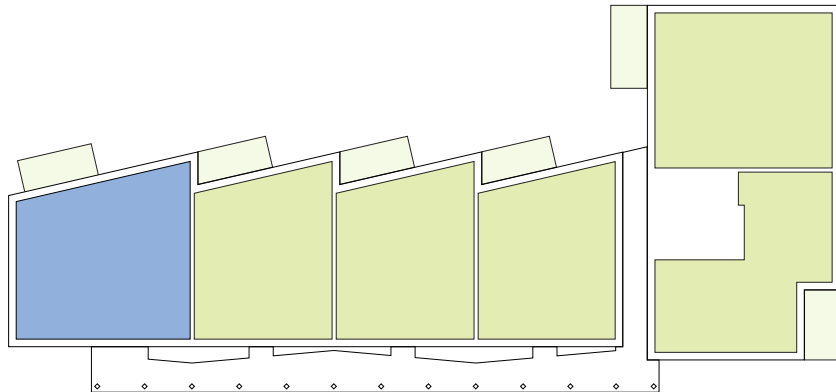
070



| | | |
|------------|----------------|---------------------------|
| 1 | séjour/cuisine | 38,65m² |
| 2.1 | chambre | 16,05m² |
| 2.2 | chambre | 13,50m² |
| 2.3 | chambre | 10,55m² |
| 3.1 | salle de bains | 6,30m² |
| 3.2 | w.c. | 1,70m² |
| 4 | hall | 11,90m² |
| 7 | technique | 1,00m² |
| 8 | balcon | 8,90m² |

surface habitable

99,65m²

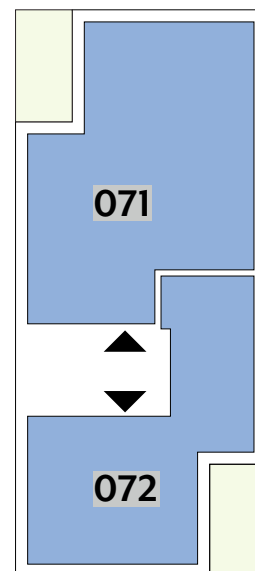
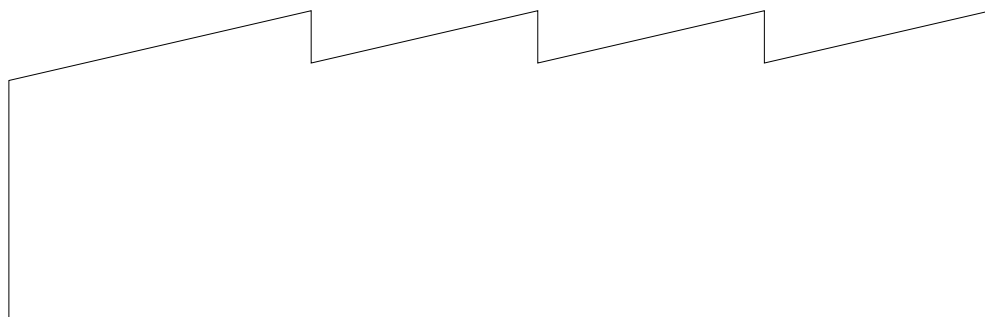


APPARTEMENTS

3^{ÈME} ÉTAGE

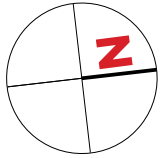
| Type | Surface Utile | surface terrasse | surface cave | prix de vente subventionné TVA 3% * |
|------|---------------------|---------------------|--------------------|-------------------------------------|
| 071 | 84,54m ² | 13,60m ² | 7,85m ² | 290.606 € |
| 072 | 58,20m ² | 13,35m ² | 7,60m ² | 203.014 € |

- les surfaces inscrites dans ce tableau peuvent subir de légères modifications dues aux nécessités techniques de la construction.
- surface utile = surface calculée à l'intérieur des murs extérieurs.
- * primes ACE sont déjà déduites (uniquement pour les acquéreurs bénéficiant d'une prime de construction de l'Etat.)
- ** primes ACE et remboursement TVA sont déjà déduits.



APPARTEMENT TYPE

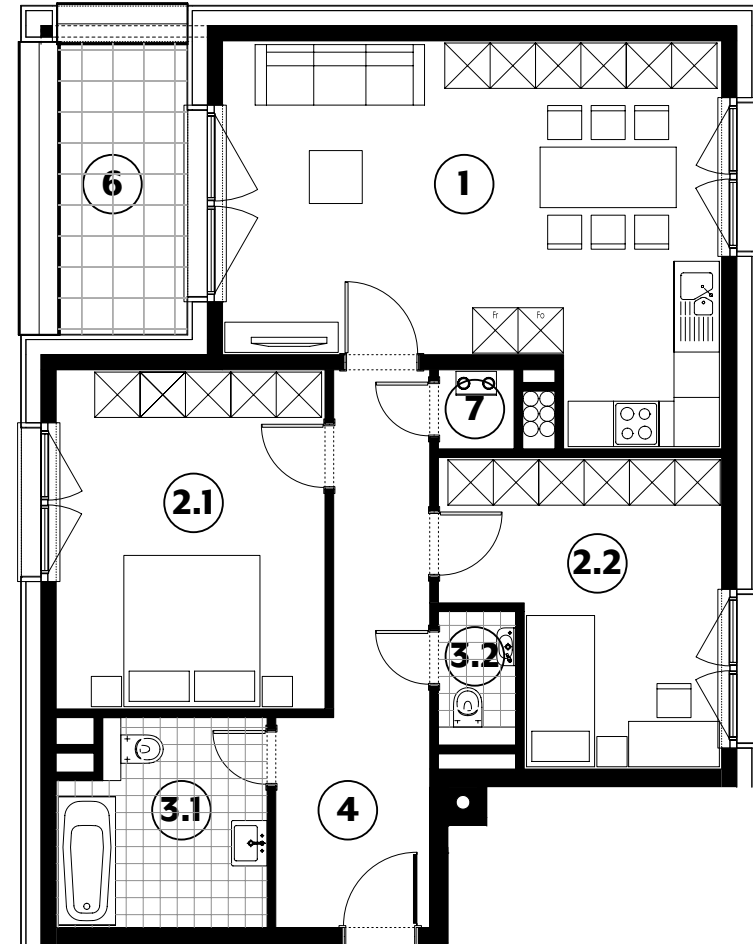
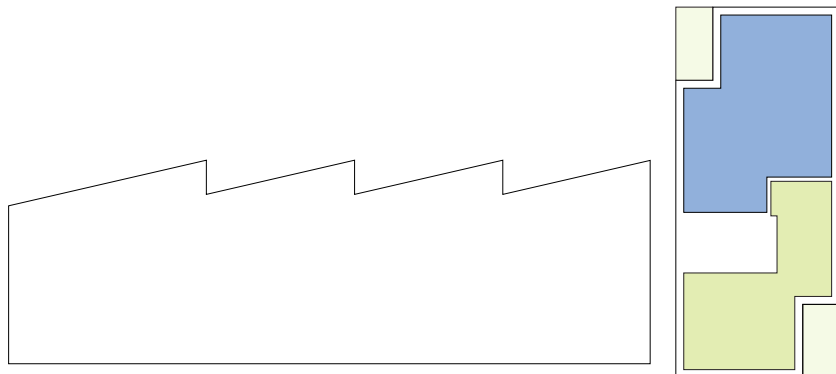
071



| | | |
|------------|----------------|---------------------------|
| 1 | séjour/cuisine | 30,00m² |
| 2.1 | chambre | 15,95m² |
| 2.2 | chambre | 12,95m² |
| 3.1 | salle de bains | 7,25m² |
| 3.2 | w.c. | 1,80m² |
| 4 | hall | 11,50m² |
| 7 | technique | 1,05m² |
| 8 | balcon | 6,55m² |

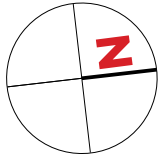
surface habitable

80,50m²



APPARTEMENT TYPE

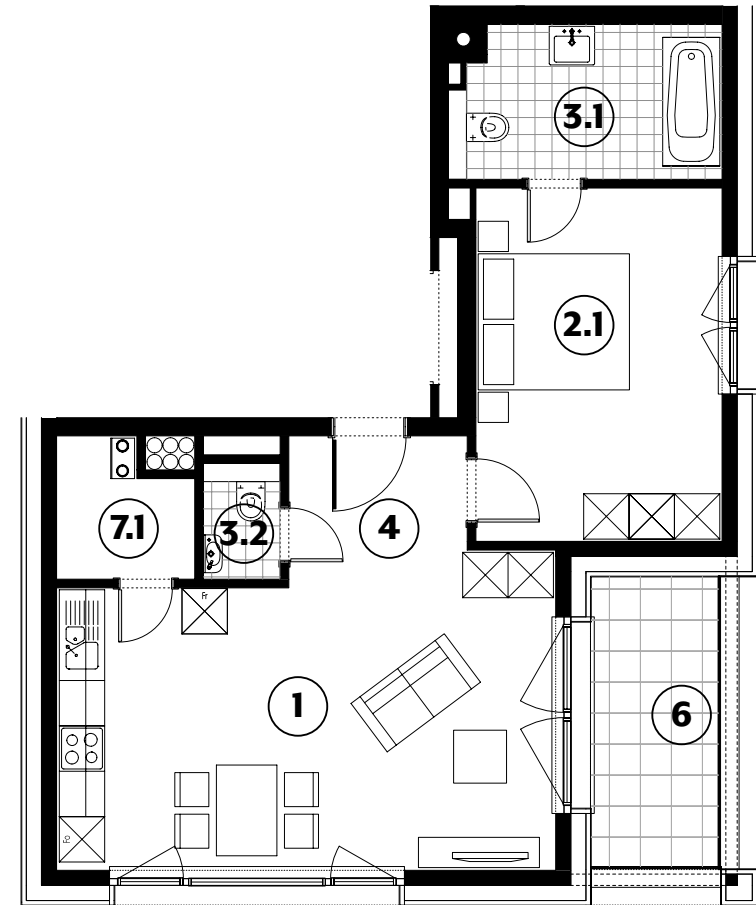
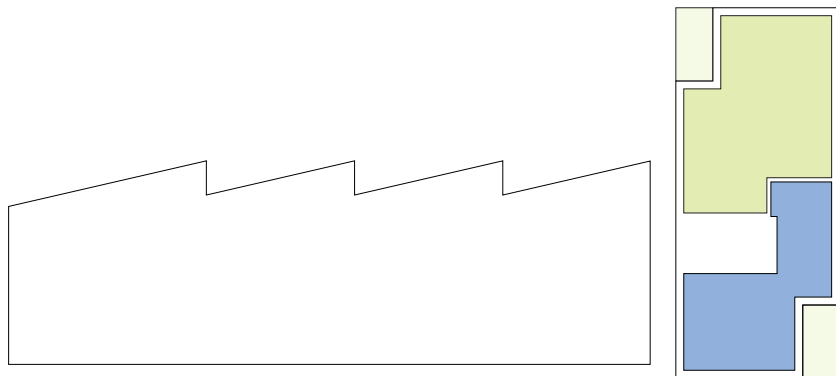
072

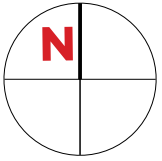


| | | |
|------------|----------------|---------------------------|
| 1 | séjour/cuisine | 26,40m² |
| 2.1 | chambre | 15,20m² |
| 3.1 | salle de bains | 6,80m² |
| 3.2 | w.c. | 1,55m² |
| 4 | hall | 3,55m² |
| 6 | terrasse | 6,55m² |
| 7 | technique | 3,05m² |

surface habitable

56,55m²









Société Nationale des
Habitations à Bon Marché

2b, rue Kalchesbruck
L-1852 Luxembourg

Carmen Sousa
Tél. (+352) 448292 - 557
carmen.sousa@snhbm.lu

snhbm.lu