

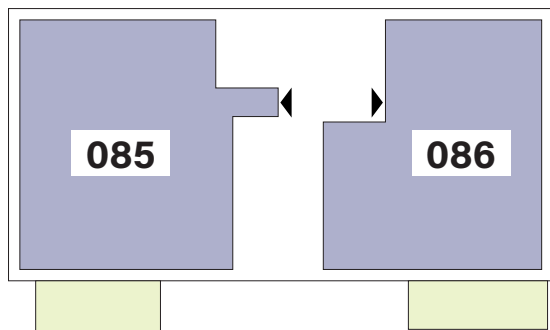
# Résidence CÉLESTINE



image non contractuelle

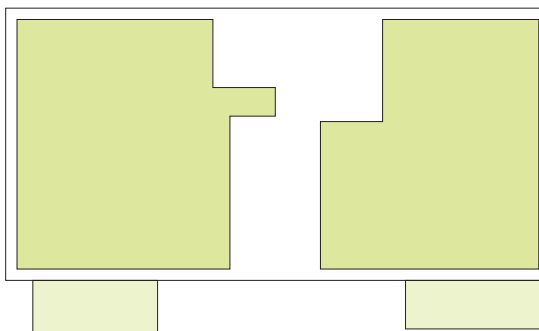
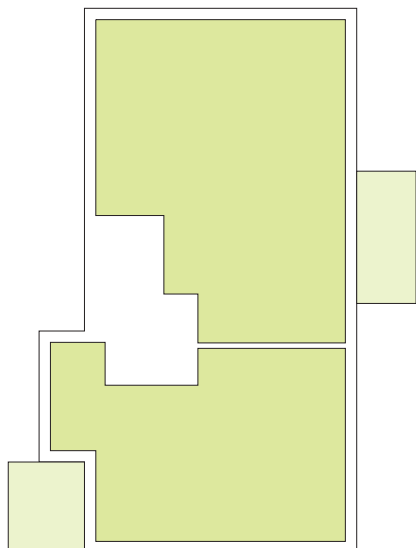
## APPARTEMENTS

# REZ-DE-CHAUSSÉE



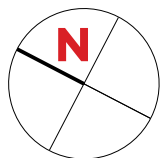
Type	Surface Utile	surface terrasse	prix de vente subventionné TVA 3% *
<b>085</b>	103,37m <sup>2</sup>	13,10m <sup>2</sup>	<b>348.708 €**</b>
<b>086</b>	92,24m <sup>2</sup>	13,15m <sup>2</sup>	<b>324.243 €</b>

- les surfaces inscrites dans ce tableau peuvent subir de légères modifications dues aux nécessités techniques de la construction.
- surface utile = surface calculée à l'intérieur des murs extérieurs.
- \* primes ACE sont déjà déduites (uniquement pour les acquéreurs bénéficiant d'une prime de construction de l'Etat.)
- \*\* primes ACE et remboursement TVA sont déjà déduits.



# APPARTEMENT TYPE

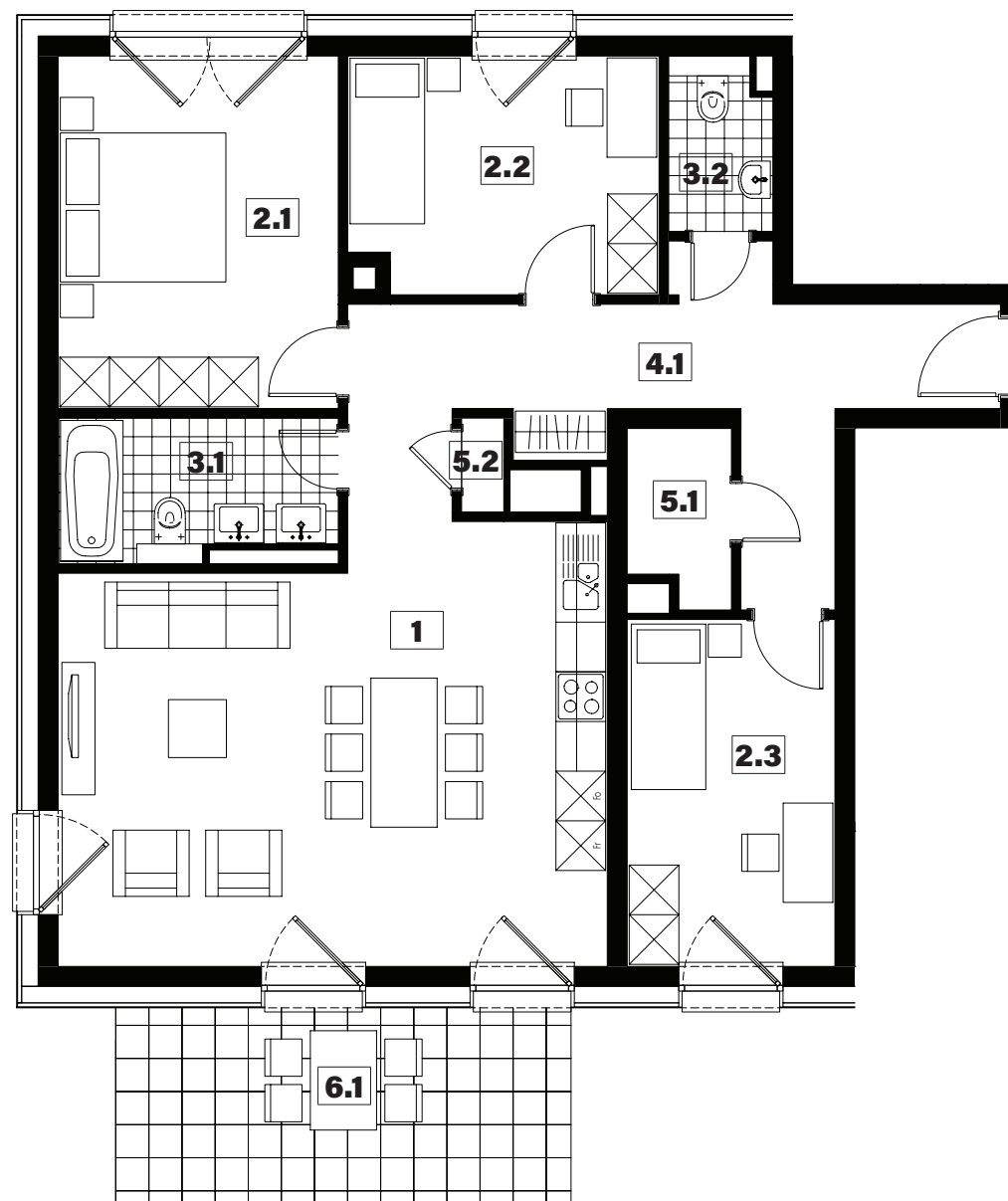
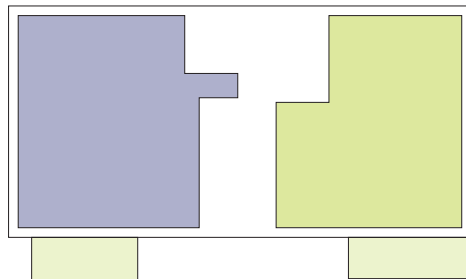
# 085



<b>1</b>	séjour/cuisine	<b>33,50m<sup>2</sup></b>
<b>2.1</b>	chambre	<b>14,40m<sup>2</sup></b>
<b>2.2</b>	chambre	<b>10,60m<sup>2</sup></b>
<b>2.3</b>	chambre	<b>10,50m<sup>2</sup></b>
<b>3.1</b>	salle de bains	<b>5,55m<sup>2</sup></b>
<b>3.2</b>	w.c.	<b>2,55m<sup>2</sup></b>
<b>4.1</b>	hall	<b>16,00m<sup>2</sup></b>
<b>5.1</b>	débarras	<b>2,50m<sup>2</sup></b>
<b>5.2</b>	technique	<b>0,60m<sup>2</sup></b>
<b>6.1</b>	terrasse	<b>13,10m<sup>2</sup></b>

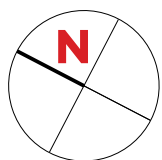
surface habitable

**96,20m<sup>2</sup>**



# APPARTEMENT TYPE

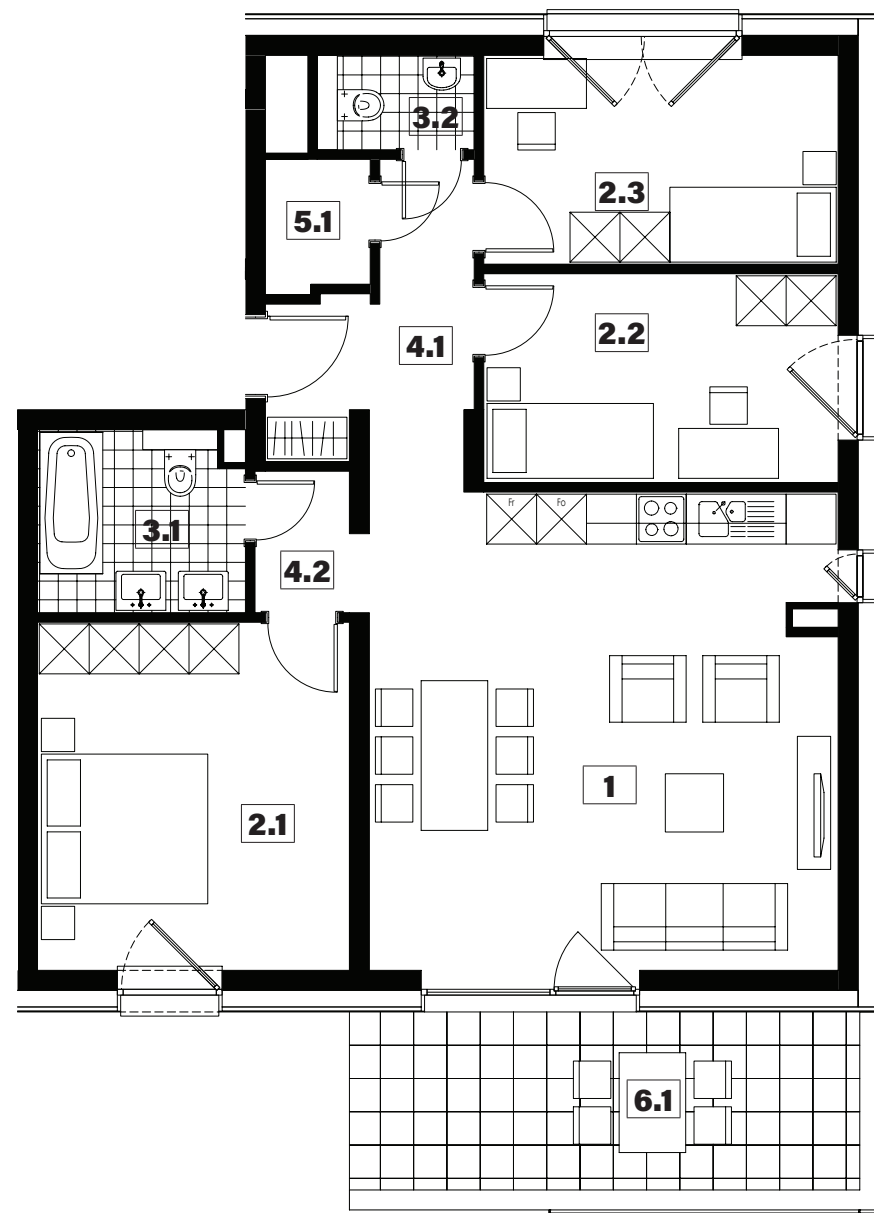
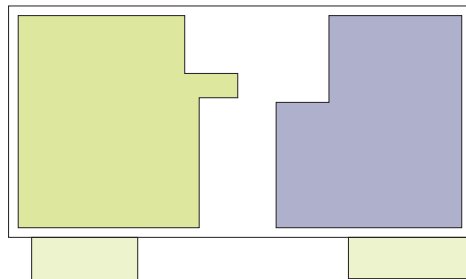
# 086



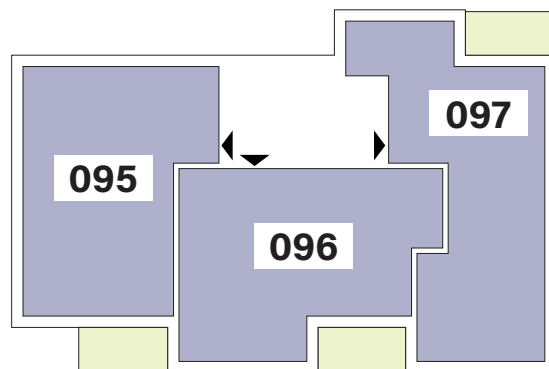
<b>1</b>	séjour/cuisine	<b>33,25m<sup>2</sup></b>
<b>2.1</b>	chambre	<b>15,70m<sup>2</sup></b>
<b>2.2</b>	chambre	<b>10,70m<sup>2</sup></b>
<b>2.3</b>	chambre	<b>10,70m<sup>2</sup></b>
<b>3.1</b>	salle de bains	<b>5,35m<sup>2</sup></b>
<b>3.2</b>	w.c.	<b>2,15m<sup>2</sup></b>
<b>4.1</b>	hall	<b>5,80m<sup>2</sup></b>
<b>4.2</b>	couloir	<b>2,15m<sup>2</sup></b>
<b>5.1</b>	débarras	<b>1,95m<sup>2</sup></b>
<b>6.1</b>	terrasse	<b>13,15m<sup>2</sup></b>

surface habitable

**87,75m<sup>2</sup>**

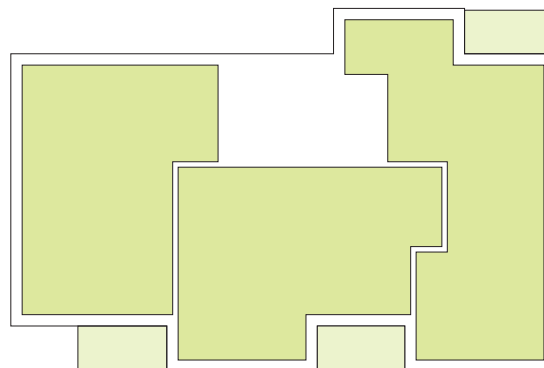
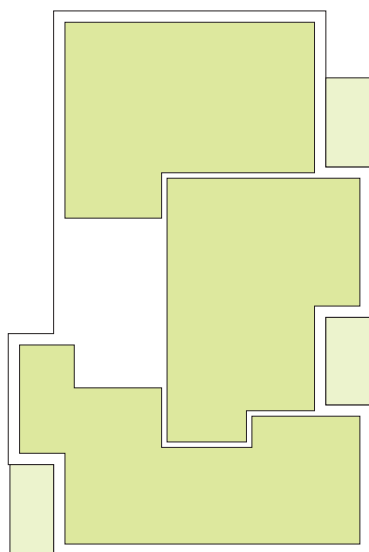


# APPARTEMENTS 1<sup>er</sup> ÉTAGE



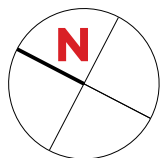
Type	Surface Utile	surface balcon	prix de vente subventionné TVA 3% *
<b>095</b>	80,44m <sup>2</sup>	7,50m <sup>2</sup>	<b>282.303 €</b>
<b>096</b>	81,00m <sup>2</sup>	7,40m <sup>2</sup>	<b>283.413 €</b>
<b>097</b>	81,93m <sup>2</sup>	7,50m <sup>2</sup>	<b>285.611 €</b>

- les surfaces inscrites dans ce tableau peuvent subir de légères modifications dues aux nécessités techniques de la construction.
- surface utile = surface calculée à l'intérieur des murs extérieurs.
- \* primes ACE sont déjà déduites (uniquement pour les acquéreurs bénéficiant d'une prime de construction de l'Etat.)



# APPARTEMENT TYPE

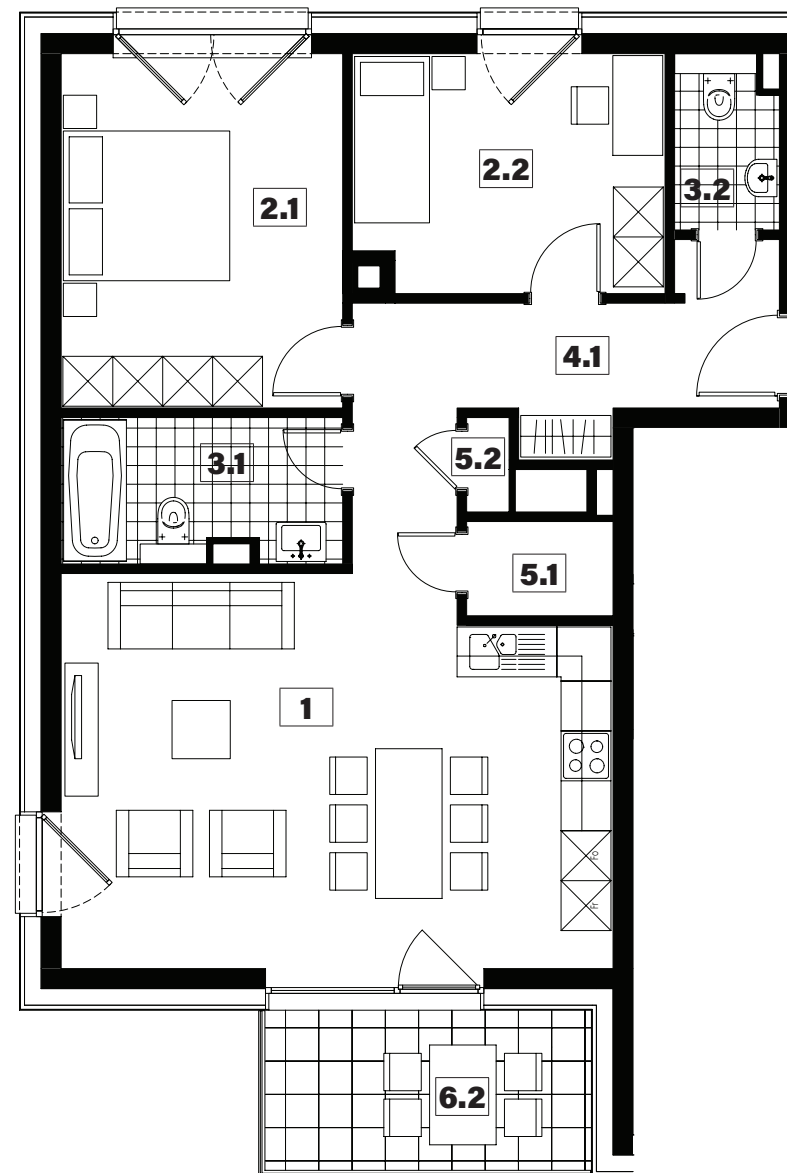
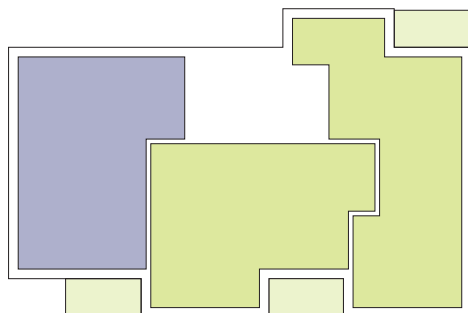
# 095



<b>1</b>	séjour/cuisine	<b>30,35m<sup>2</sup></b>
<b>2.1</b>	chambre	<b>14,40m<sup>2</sup></b>
<b>2.2</b>	chambre	<b>10,60m<sup>2</sup></b>
<b>3.1</b>	salle de bains	<b>5,75m<sup>2</sup></b>
<b>3.2</b>	w.c.	<b>2,55m<sup>2</sup></b>
<b>4.1</b>	hall	<b>10,60m<sup>2</sup></b>
<b>5.1</b>	débarras	<b>2,00m<sup>2</sup></b>
<b>5.2</b>	technique	<b>0,60m<sup>2</sup></b>
<b>6.2</b>	balcon	<b>7,50m<sup>2</sup></b>

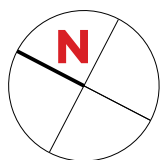
surface habitable

**76,85m<sup>2</sup>**



# APPARTEMENT TYPE

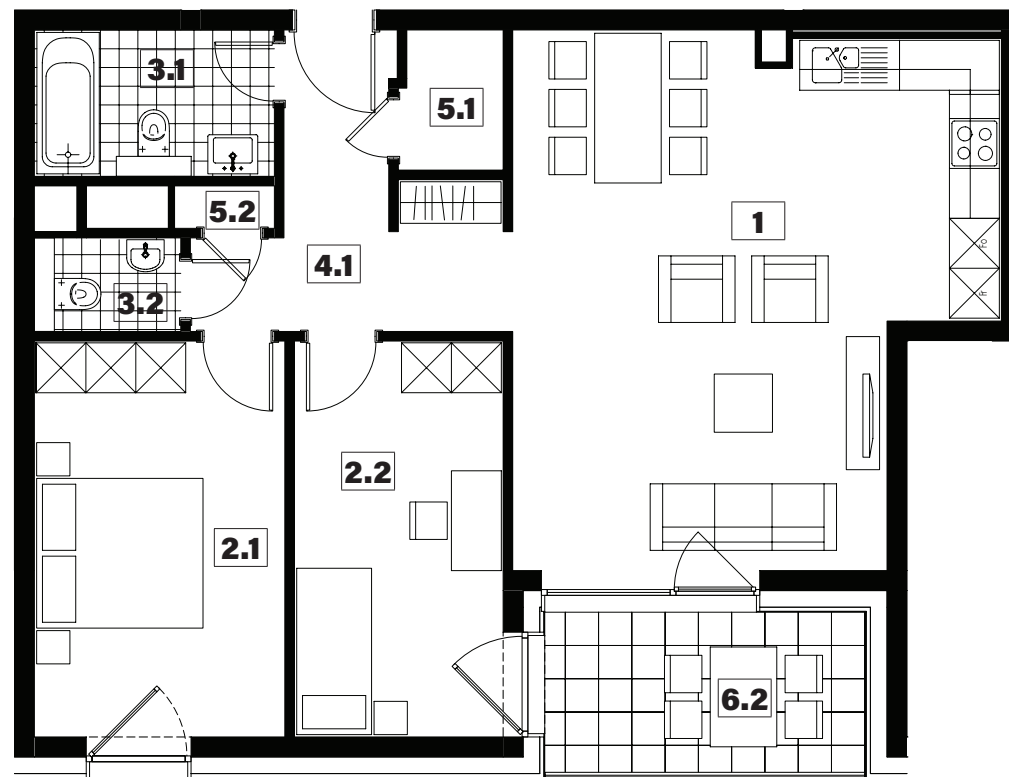
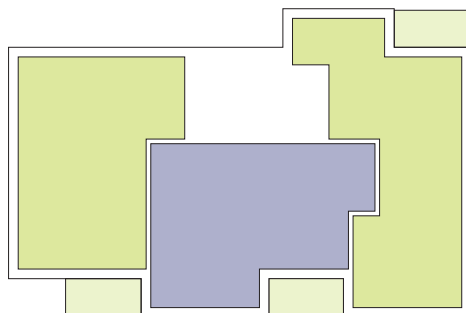
# 096



<b>1</b>	séjour/cuisine	<b>33,65m<sup>2</sup></b>
<b>2.1</b>	chambre	<b>14,35m<sup>2</sup></b>
<b>2.2</b>	chambre	<b>11,95m<sup>2</sup></b>
<b>3.1</b>	salle de bains	<b>5,10m<sup>2</sup></b>
<b>3.2</b>	w.c.	<b>2,00m<sup>2</sup></b>
<b>4.1</b>	hall	<b>8,40m<sup>2</sup></b>
<b>5.1</b>	débarras	<b>2,05m<sup>2</sup></b>
<b>5.2</b>	technique	<b>0,60m<sup>2</sup></b>
<b>6.2</b>	balcon	<b>7,40m<sup>2</sup></b>

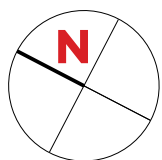
surface habitable

## 78,10m<sup>2</sup>



# APPARTEMENT TYPE

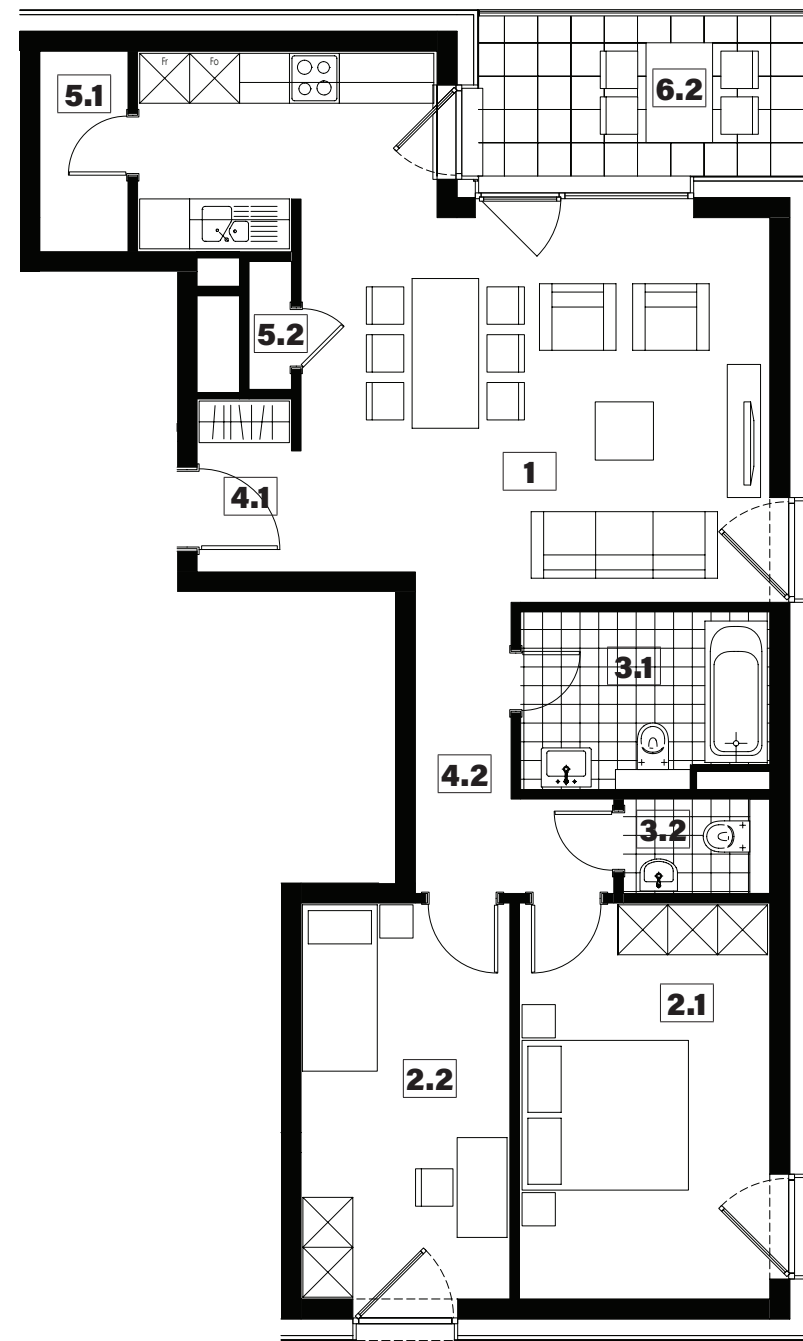
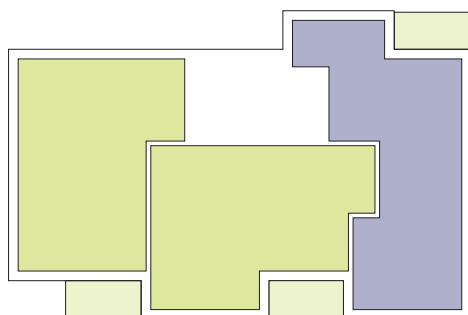
# 097



<b>1</b>	séjour/cuisine	<b>33,50m<sup>2</sup></b>
<b>2.1</b>	chambre	<b>14,35m<sup>2</sup></b>
<b>2.2</b>	chambre	<b>11,95m<sup>2</sup></b>
<b>3.1</b>	salle de bains	<b>6,10m<sup>2</sup></b>
<b>3.2</b>	w.c.	<b>2,00m<sup>2</sup></b>
<b>4.1</b>	hall	<b>2,55m<sup>2</sup></b>
<b>4.2</b>	couloir	<b>5,45m<sup>2</sup></b>
<b>5.1</b>	débarras	<b>2,55m<sup>2</sup></b>
<b>5.2</b>	technique	<b>0,80m<sup>2</sup></b>
<b>6.2</b>	balcon	<b>7,50m<sup>2</sup></b>

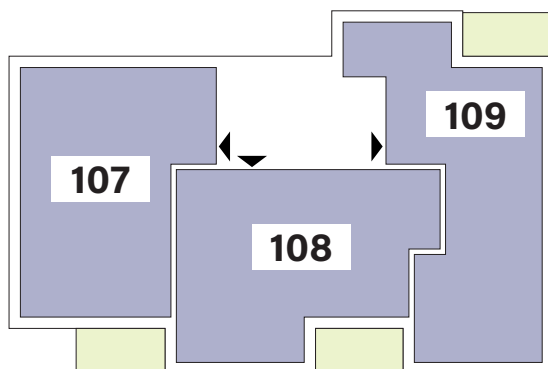
surface habitable

**79,25m<sup>2</sup>**



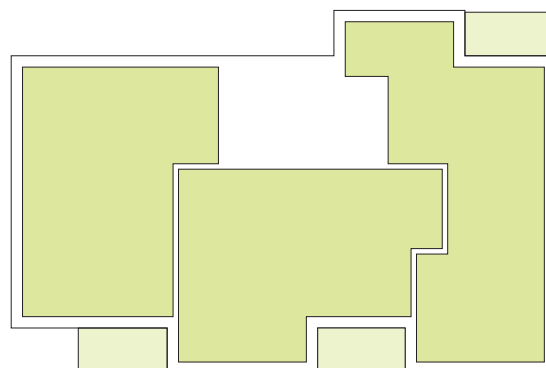
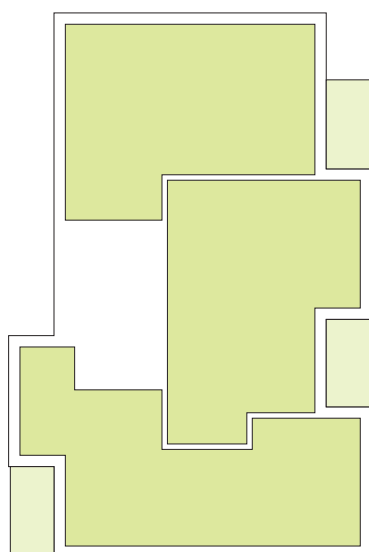


# APPARTEMENTS 2<sup>ème</sup> ÉTAGE



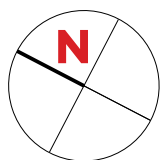
Type	Surface Utile	surface balcon	prix de vente subventionné TVA 3% *
<b>107</b>	80,44m <sup>2</sup>	7,50m <sup>2</sup>	<b>287.413 €</b>
<b>108</b>	81,00m <sup>2</sup>	7,40m <sup>2</sup>	<b>288.554 €</b>
<b>109</b>	81,93m <sup>2</sup>	7,50m <sup>2</sup>	<b>290.812 €</b>

- les surfaces inscrites dans ce tableau peuvent subir de légères modifications dues aux nécessités techniques de la construction.
- surface utile = surface calculée à l'intérieur des murs extérieurs.
- \* primes ACE sont déjà déduites (uniquement pour les acquéreurs bénéficiant d'une prime de construction de l'Etat.)



# APPARTEMENT TYPE

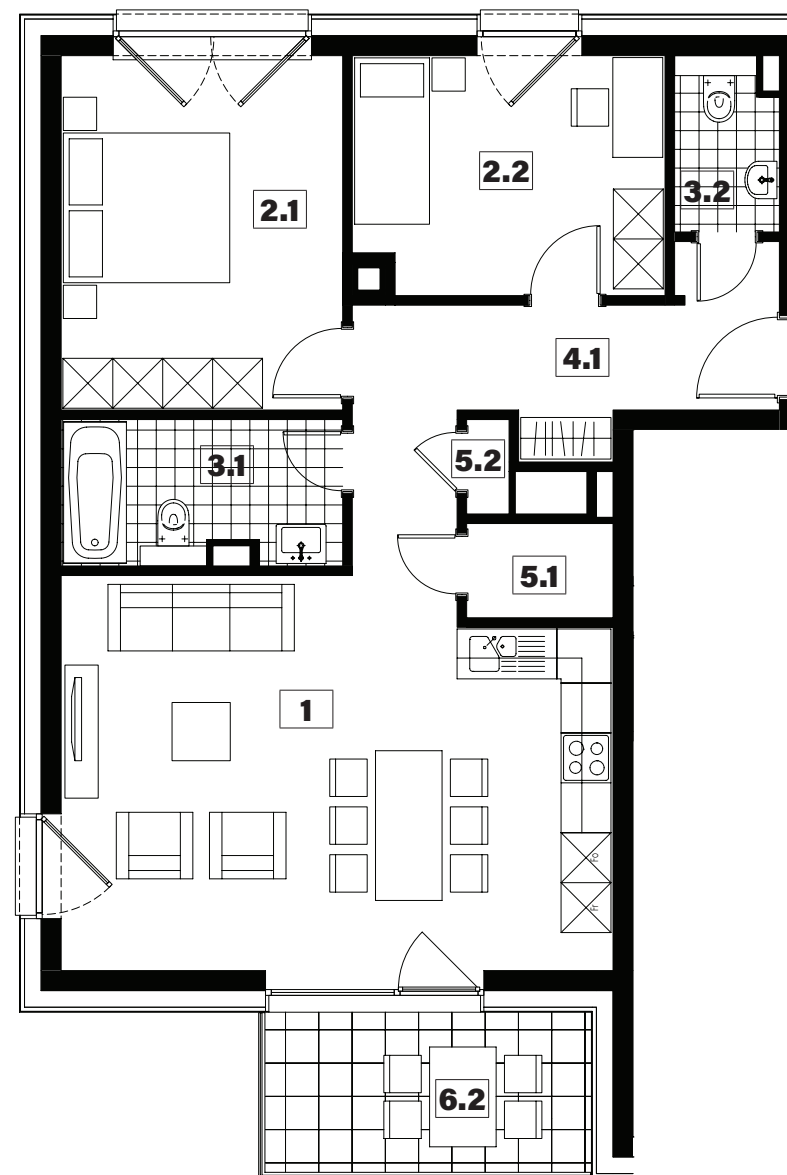
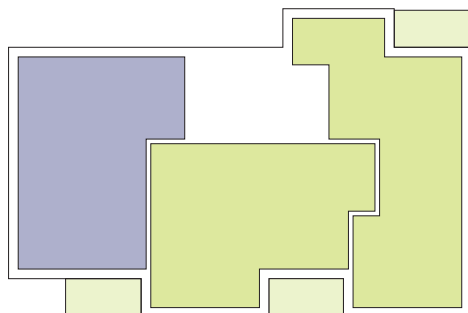
# 107



<b>1</b>	séjour/cuisine	<b>30,35m<sup>2</sup></b>
<b>2.1</b>	chambre	<b>14,40m<sup>2</sup></b>
<b>2.2</b>	chambre	<b>10,60m<sup>2</sup></b>
<b>3.1</b>	salle de bains	<b>5,75m<sup>2</sup></b>
<b>3.2</b>	w.c.	<b>2,55m<sup>2</sup></b>
<b>4.1</b>	hall	<b>10,60m<sup>2</sup></b>
<b>5.1</b>	débarras	<b>2,00m<sup>2</sup></b>
<b>5.2</b>	technique	<b>0,60m<sup>2</sup></b>
<b>6.2</b>	balcon	<b>7,50m<sup>2</sup></b>

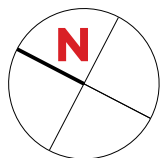
surface habitable

**76,85m<sup>2</sup>**



# APPARTEMENT TYPE

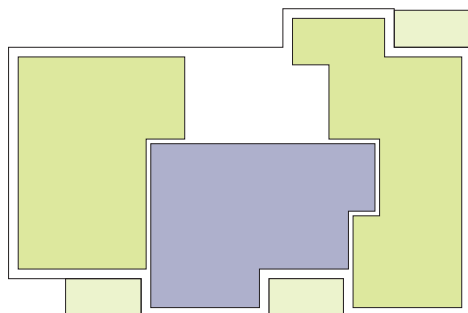
# 108



<b>1</b>	séjour/cuisine	<b>33,65m<sup>2</sup></b>
<b>2.1</b>	chambre	<b>14,35m<sup>2</sup></b>
<b>2.2</b>	chambre	<b>11,95m<sup>2</sup></b>
<b>3.1</b>	salle de bains	<b>5,10m<sup>2</sup></b>
<b>3.2</b>	w.c.	<b>2,00m<sup>2</sup></b>
<b>4.1</b>	hall	<b>8,40m<sup>2</sup></b>
<b>5.1</b>	débarras	<b>2,05m<sup>2</sup></b>
<b>5.2</b>	technique	<b>0,60m<sup>2</sup></b>
<b>6.2</b>	balcon	<b>7,40m<sup>2</sup></b>

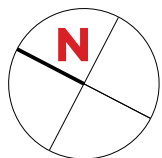
surface habitable

**78,10m<sup>2</sup>**



# APPARTEMENT TYPE

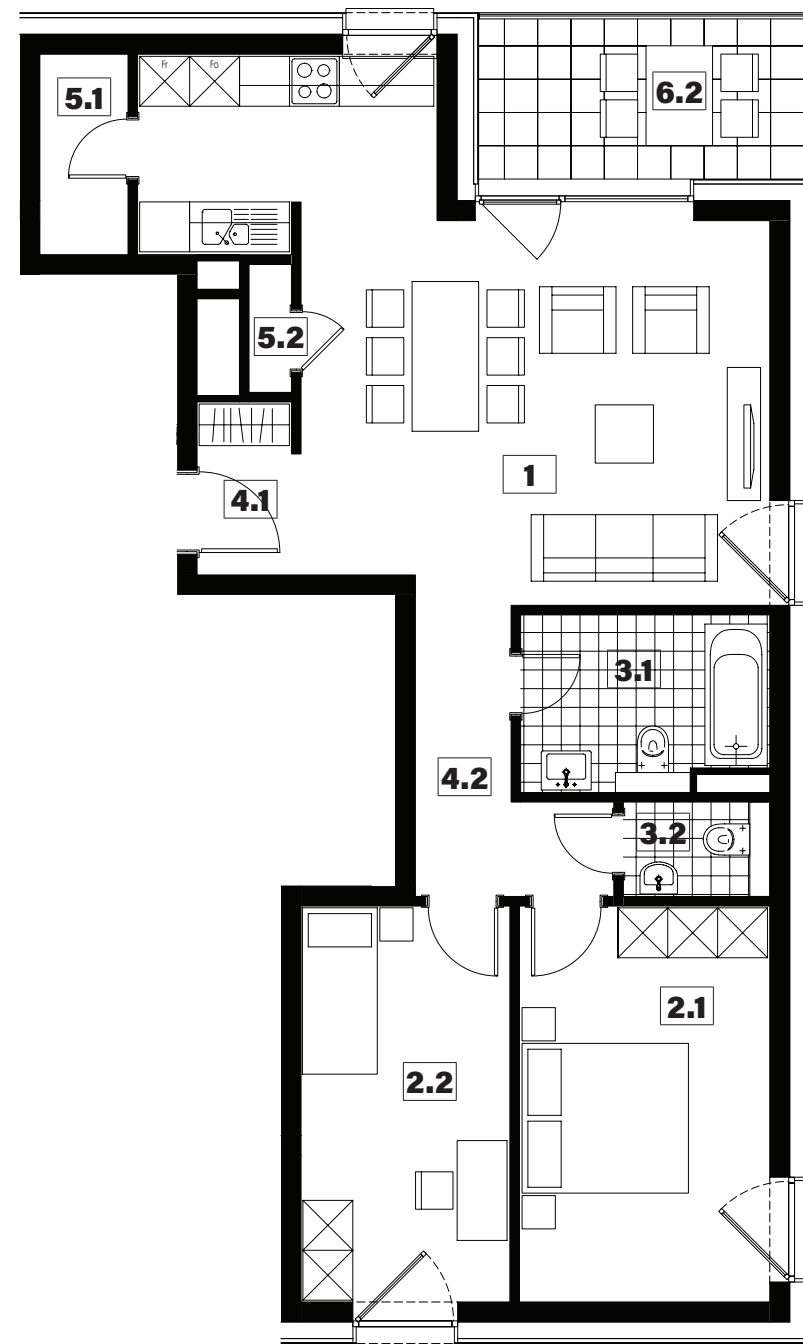
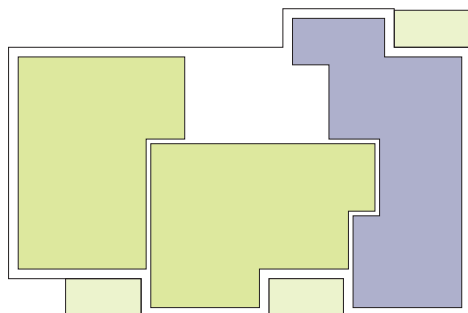
# 109

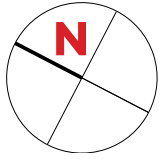


<b>1</b>	séjour/cuisine	<b>33,50m<sup>2</sup></b>
<b>2.1</b>	chambre	<b>14,35m<sup>2</sup></b>
<b>2.2</b>	chambre	<b>11,95m<sup>2</sup></b>
<b>3.1</b>	salle de bains	<b>6,10m<sup>2</sup></b>
<b>3.2</b>	w.c.	<b>2,00m<sup>2</sup></b>
<b>4.1</b>	hall	<b>2,55m<sup>2</sup></b>
<b>4.2</b>	couloir	<b>5,45m<sup>2</sup></b>
<b>5.1</b>	débarras	<b>2,55m<sup>2</sup></b>
<b>5.2</b>	technique	<b>0,80m<sup>2</sup></b>
<b>6.2</b>	balcon	<b>7,50m<sup>2</sup></b>

surface habitable

**79,25m<sup>2</sup>**





# PLAN DE SITUATION



# NOTES

[illegible]

# NOTES

This image shows a single sheet of white paper with horizontal ruling lines. The lines are evenly spaced and run across the width of the page. There are no margins, text, or other markings on the paper.



# SNHBM

**Cindy Arendt**

Chargée des ventes

Tel.: +352 44 82 92 - 555

E-mail: [cindy.arendt@snhbm.lu](mailto:cindy.arendt@snhbm.lu)

 [snhbm.lu](https://snhbm.lu)

image non contractuelle