

# Résidence CUMINO



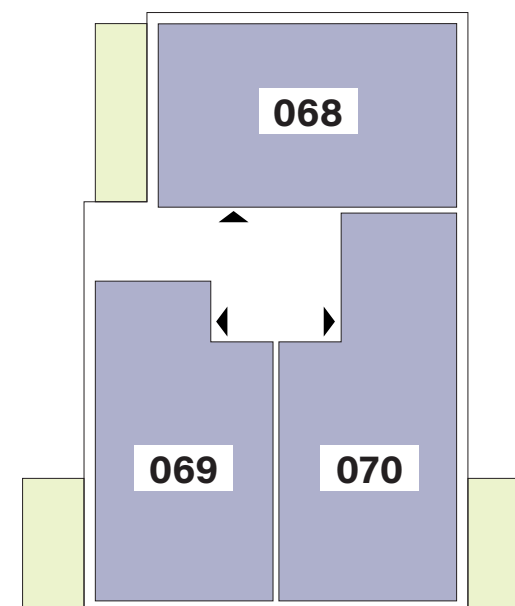
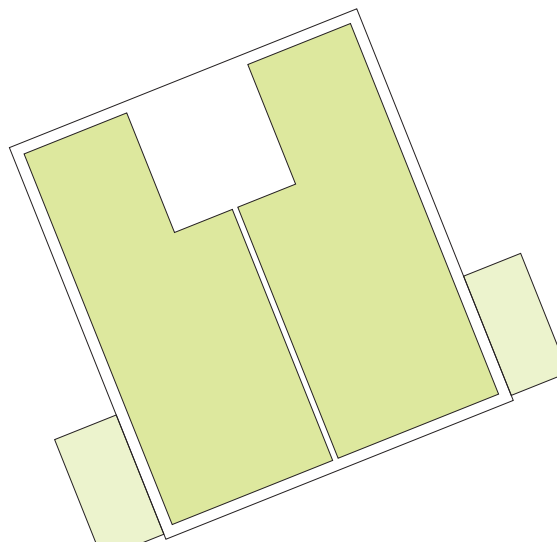
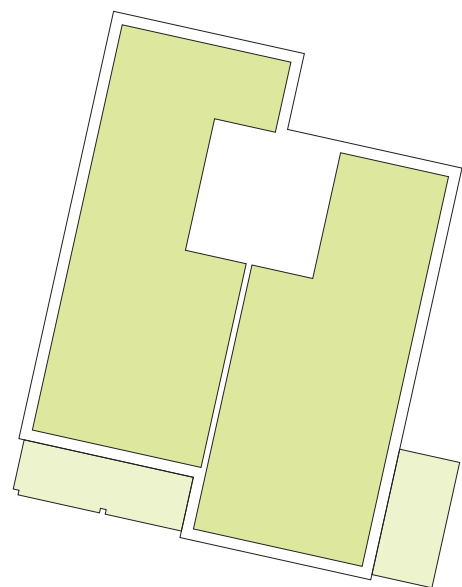
image non contractuelle

## APPARTEMENTS

# REZ-DE-CHAUSSÉE

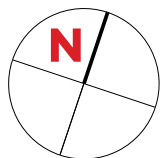
Type	Surface Utile	surface terrasse	prix de vente subventionné TVA 3% *
<b>068</b>	88,82m <sup>2</sup>	13,05m <sup>2</sup>	<b>291.546 €</b>
<b>069</b>	90,86m <sup>2</sup>	13,05m <sup>2</sup>	<b>297.722 €</b>
<b>070</b>	99,50m <sup>2</sup>	13,05m <sup>2</sup>	<b>339.080 €**</b>

- les surfaces inscrites dans ce tableau peuvent subir de légères modifications dues aux nécessités techniques de la construction.
- surface utile = surface calculée à l'intérieur des murs extérieurs.
- \* primes ACE sont déjà déduites (uniquement pour les acquéreurs bénéficiant d'une prime de construction de l'Etat.)
- \*\* primes ACE et remboursement TVA sont déjà déduits.



# APPARTEMENT TYPE

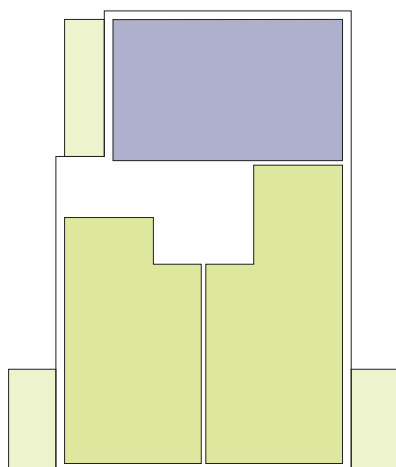
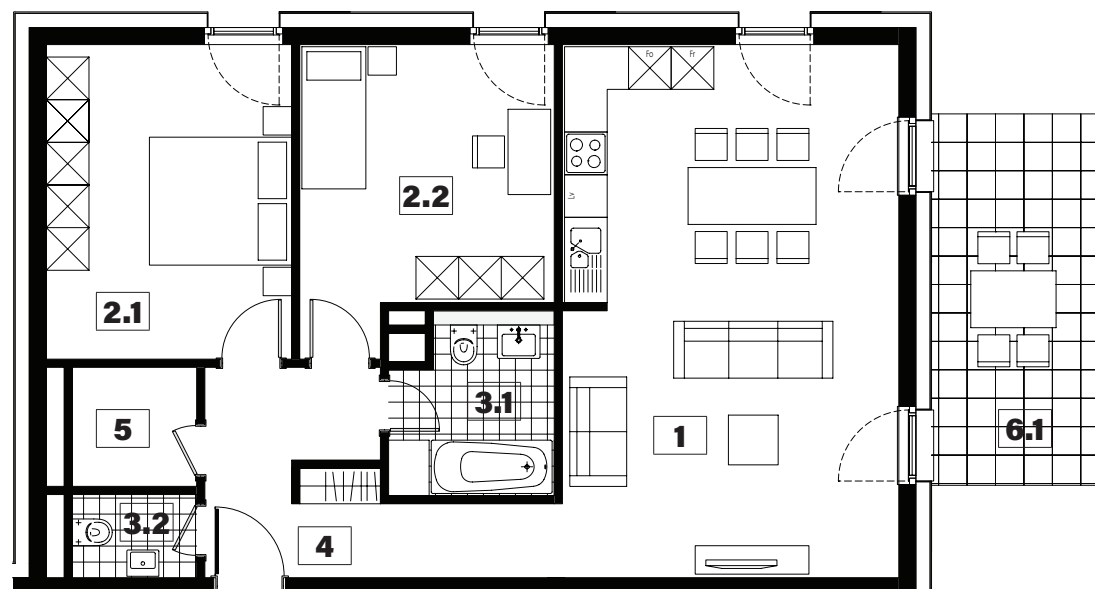
# 068



<b>1</b>	séjour/cuisine	<b>35,40m<sup>2</sup></b>
<b>2.1</b>	chambre	<b>15,25m<sup>2</sup></b>
<b>2.2</b>	chambre	<b>13,90m<sup>2</sup></b>
<b>3.1</b>	salle de bains	<b>5,55m<sup>2</sup></b>
<b>3.2</b>	w.c.	<b>2,05m<sup>2</sup></b>
<b>4</b>	hall	<b>9,75m<sup>2</sup></b>
<b>5</b>	débarras	<b>2,95m<sup>2</sup></b>
<b>6.1</b>	terrasse	<b>13,05m<sup>2</sup></b>

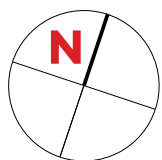
surface habitable

**84,85m<sup>2</sup>**



# APPARTEMENT TYPE

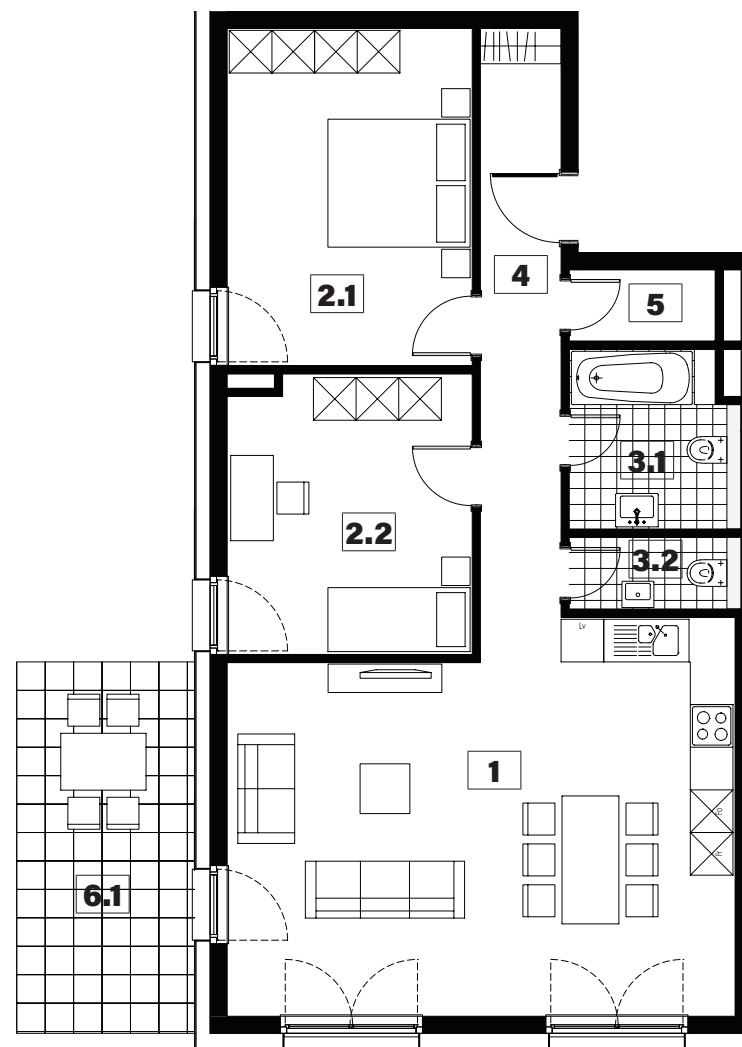
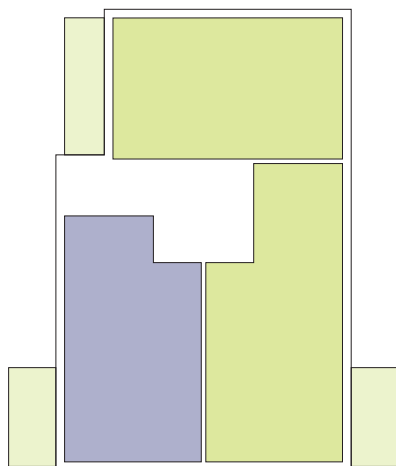
# 069



<b>1</b>	séjour/cuisine	<b>38,30m<sup>2</sup></b>
<b>2.1</b>	chambre	<b>16,40m<sup>2</sup></b>
<b>2.2</b>	chambre	<b>13,35m<sup>2</sup></b>
<b>3.1</b>	salle de bains	<b>5,85m<sup>2</sup></b>
<b>3.2</b>	w.c.	<b>2,45m<sup>2</sup></b>
<b>4</b>	hall	<b>9,40m<sup>2</sup></b>
<b>5</b>	débarras	<b>2,05m<sup>2</sup></b>
<b>6.1</b>	terrasse	<b>13,05m<sup>2</sup></b>

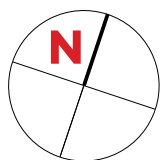
surface habitable

## 87,80m<sup>2</sup>



# APPARTEMENT TYPE

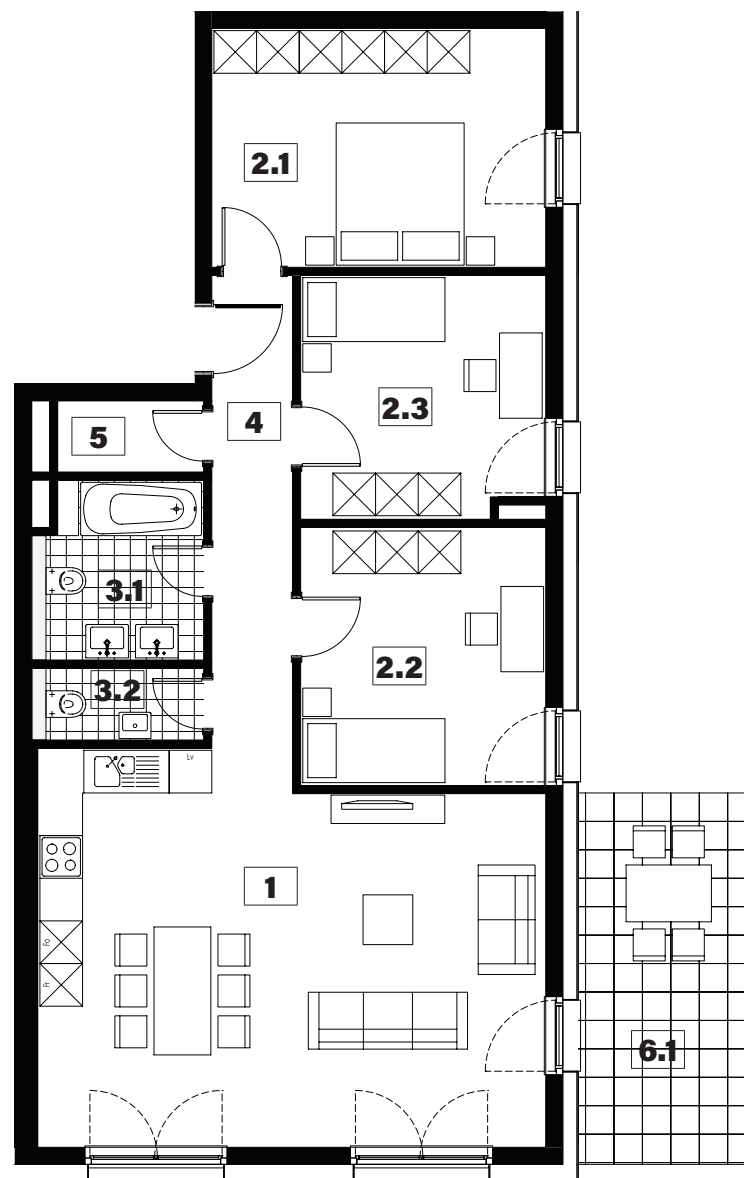
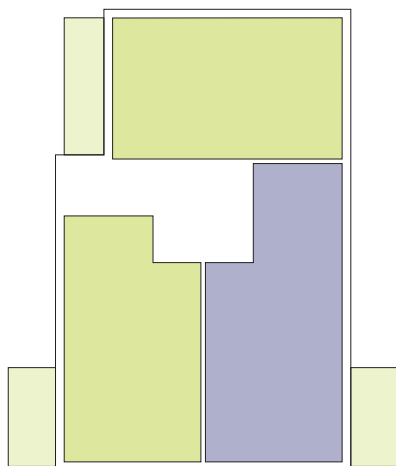
## 070



<b>1</b>	séjour/cuisine	<b>38,30m<sup>2</sup></b>
<b>2.1</b>	chambre	<b>15,80m<sup>2</sup></b>
<b>2.2</b>	chambre	<b>12,50m<sup>2</sup></b>
<b>2.3</b>	chambre	<b>11,60m<sup>2</sup></b>
<b>3.1</b>	salle de bains	<b>5,85m<sup>2</sup></b>
<b>3.2</b>	w.c.	<b>2,45m<sup>2</sup></b>
<b>4</b>	hall	<b>7,55m<sup>2</sup></b>
<b>5</b>	débarras	<b>2,05m<sup>2</sup></b>
<b>6.1</b>	terrasse	<b>13,05m<sup>2</sup></b>

surface habitable

**96,10m<sup>2</sup>**

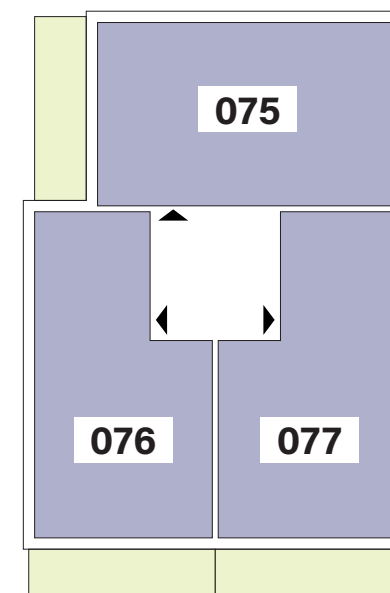
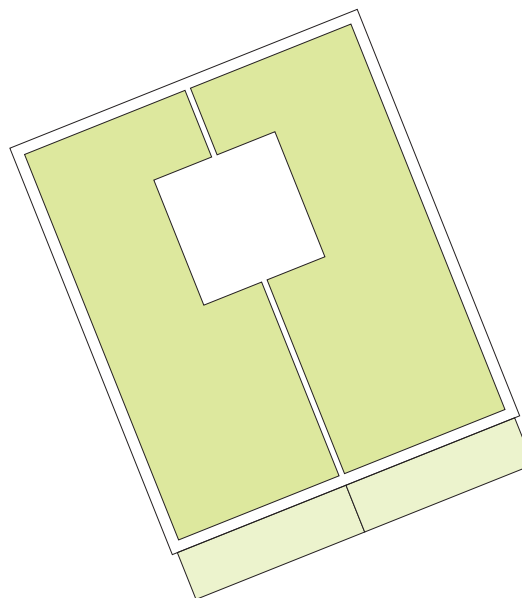
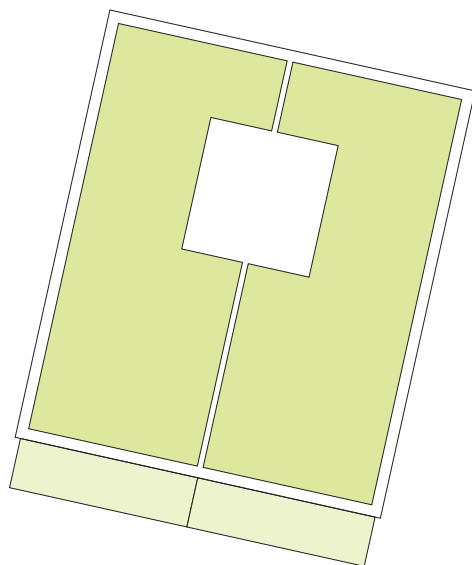


# APPARTEMENTS

## 1<sup>er</sup> ÉTAGE

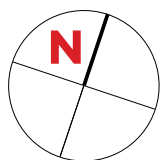
Type	Surface Utile	surface balcon	prix de vente subventionné TVA 3% *
<b>075</b>	88,82m <sup>2</sup>	16,45m <sup>2</sup>	<b>310.742 €</b>
<b>076</b>	79,71m <sup>2</sup>	16,50m <sup>2</sup>	<b>289.994 €</b>
<b>077</b>	79,71m <sup>2</sup>	16,50m <sup>2</sup>	<b>289.994 €</b>

- les surfaces inscrites dans ce tableau peuvent subir de légères modifications dues aux nécessités techniques de la construction.
- surface utile = surface calculée à l'intérieur des murs extérieurs.
- \* primes ACE sont déjà déduites (uniquement pour les acquéreurs bénéficiant d'une prime de construction de l'Etat.)
- \*\* primes ACE et remboursement TVA sont déjà déduits.



# APPARTEMENT TYPE

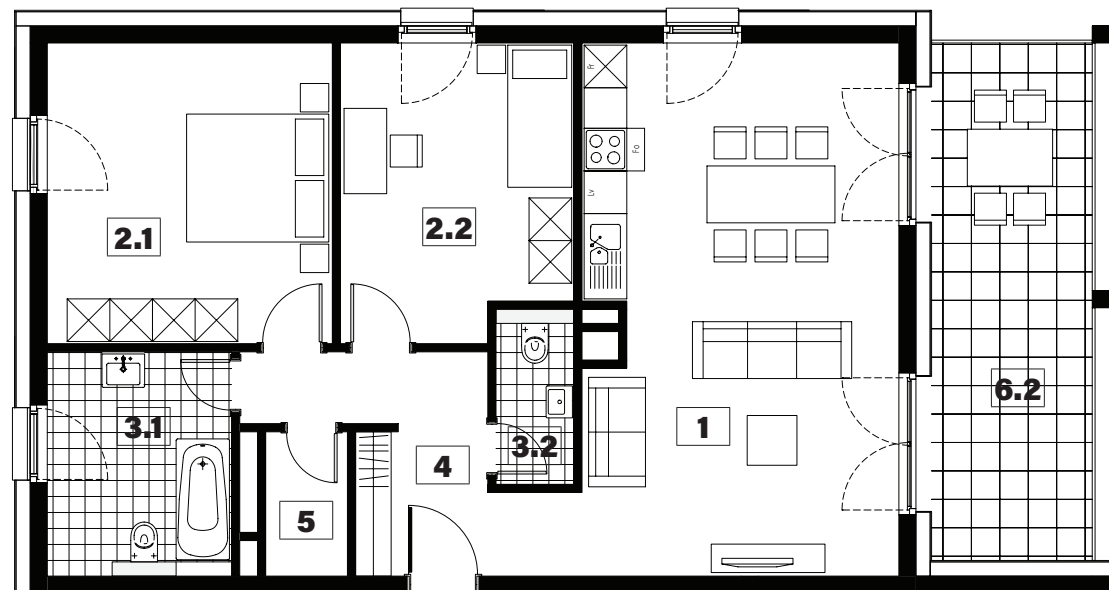
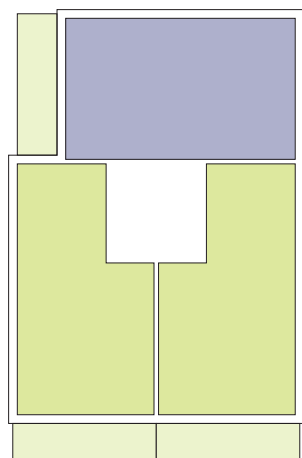
# 075



<b>1</b>	séjour/cuisine	<b>32,85m<sup>2</sup></b>
<b>2.1</b>	chambre	<b>16,95m<sup>2</sup></b>
<b>2.2</b>	chambre	<b>13,15m<sup>2</sup></b>
<b>3.1</b>	salle de bains	<b>8,20m<sup>2</sup></b>
<b>3.2</b>	w.c.	<b>2,70m<sup>2</sup></b>
<b>4</b>	hall	<b>9,00m<sup>2</sup></b>
<b>5</b>	débarras	<b>2,35m<sup>2</sup></b>
<b>6.2</b>	balcon	<b>16,45m<sup>2</sup></b>

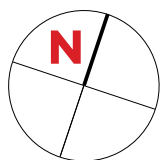
surface habitable

**85,20m<sup>2</sup>**



# APPARTEMENT TYPE

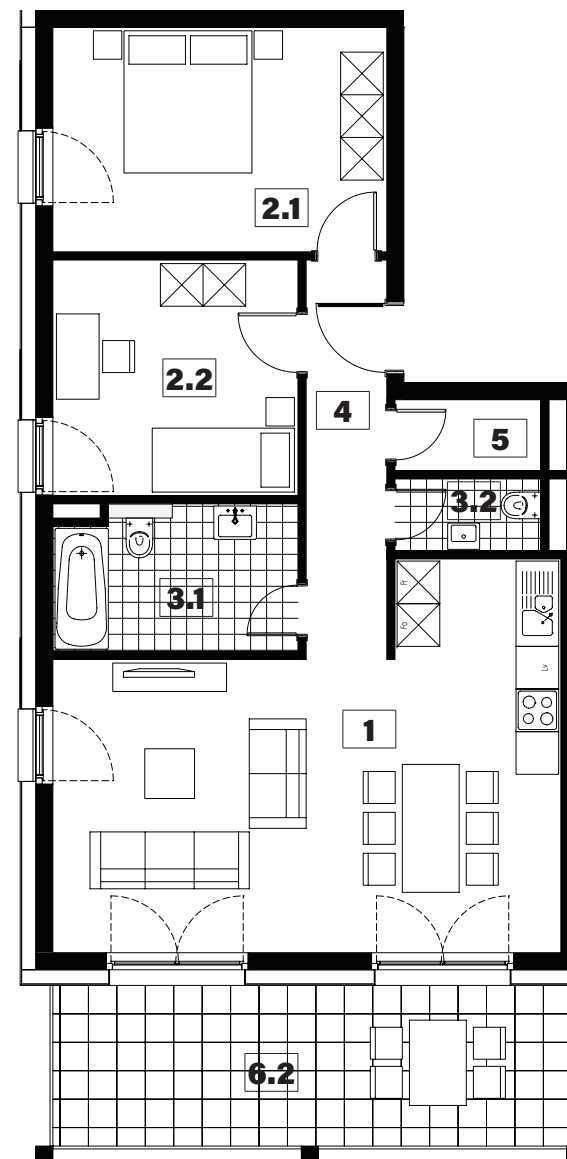
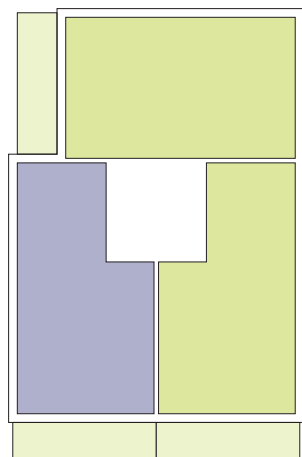
# 076



<b>1</b>	séjour/cuisine	<b>33,25m<sup>2</sup></b>
<b>2.1</b>	chambre	<b>14,85m<sup>2</sup></b>
<b>2.2</b>	chambre	<b>11,45m<sup>2</sup></b>
<b>3.1</b>	salle de bains	<b>6,90m<sup>2</sup></b>
<b>3.2</b>	w.c.	<b>2,05m<sup>2</sup></b>
<b>4</b>	hall	<b>6,40m<sup>2</sup></b>
<b>5</b>	débarras	<b>2,05m<sup>2</sup></b>
<b>6.2</b>	balcon	<b>16,50m<sup>2</sup></b>

surface habitable

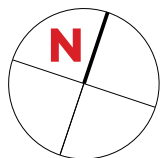
**76,95m<sup>2</sup>**





# APPARTEMENT TYPE

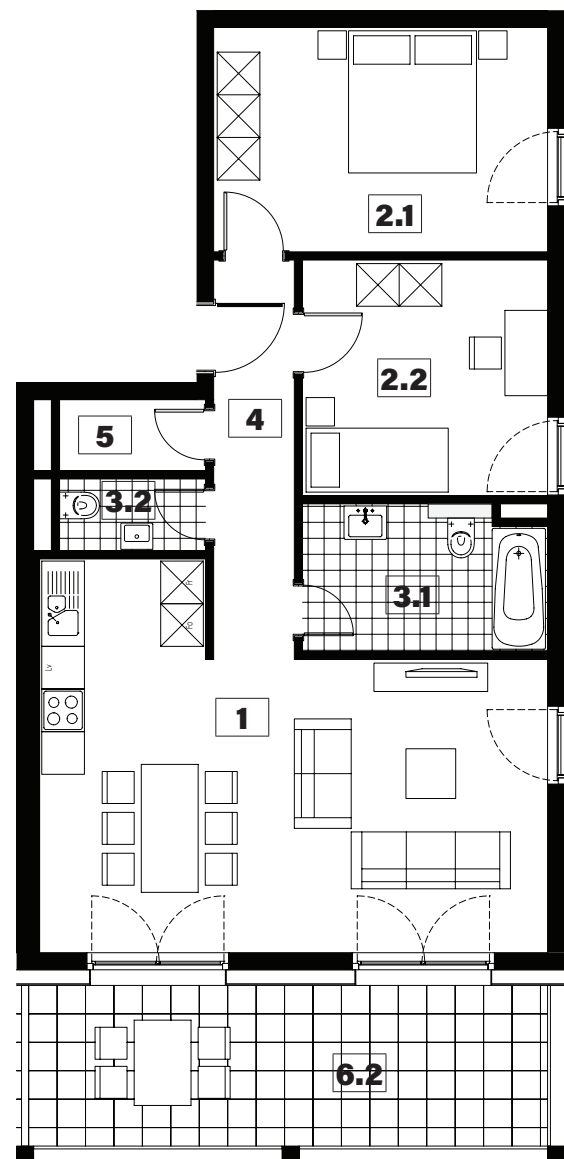
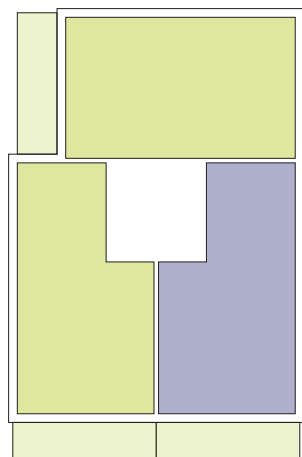
# 077



<b>1</b>	séjour/cuisine	<b>33,25m<sup>2</sup></b>
<b>2.1</b>	chambre	<b>14,85m<sup>2</sup></b>
<b>2.2</b>	chambre	<b>11,45m<sup>2</sup></b>
<b>3.1</b>	salle de bains	<b>6,90m<sup>2</sup></b>
<b>3.2</b>	w.c.	<b>2,05m<sup>2</sup></b>
<b>4</b>	hall	<b>6,40m<sup>2</sup></b>
<b>5</b>	débarras	<b>2,05m<sup>2</sup></b>
<b>6.2</b>	balcon	<b>16,50m<sup>2</sup></b>

surface habitable

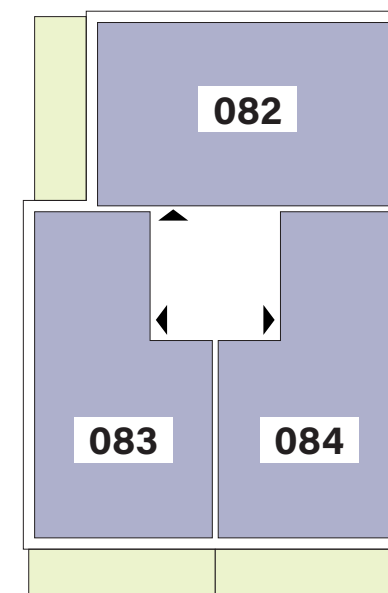
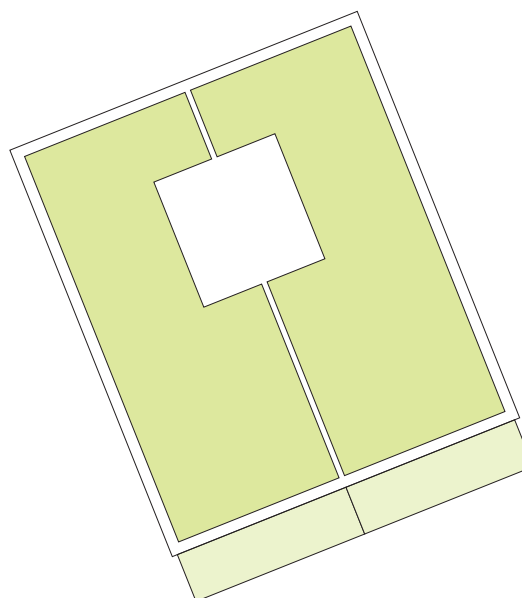
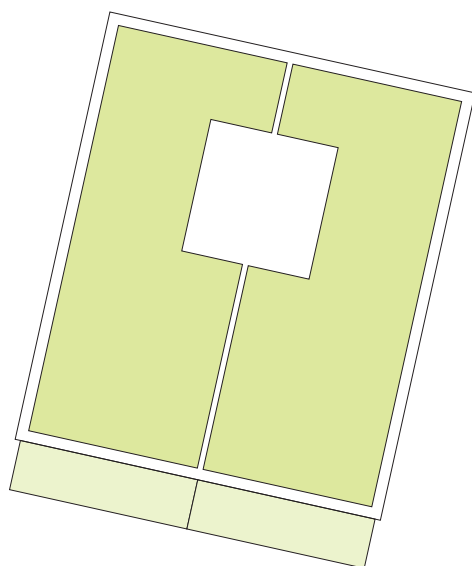
**76,95m<sup>2</sup>**



# APPARTEMENTS 2<sup>ème</sup> ÉTAGE

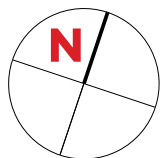
Type	Surface Utile	surface balcon	prix de vente subventionné TVA 3% *
<b>082</b>	88,82m <sup>2</sup>	16,45m <sup>2</sup>	<b>318.986 €</b>
<b>083</b>	79,71m <sup>2</sup>	16,50m <sup>2</sup>	<b>297.461 €</b>
<b>084</b>	79,71m <sup>2</sup>	16,50m <sup>2</sup>	<b>297.461 €</b>

- les surfaces inscrites dans ce tableau peuvent subir de légères modifications dues aux nécessités techniques de la construction.
- surface utile = surface calculée à l'intérieur des murs extérieurs.
- \* primes ACE sont déjà déduites (uniquement pour les acquéreurs bénéficiant d'une prime de construction de l'Etat.)
- \*\* primes ACE et remboursement TVA sont déjà déduits.



# APPARTEMENT TYPE

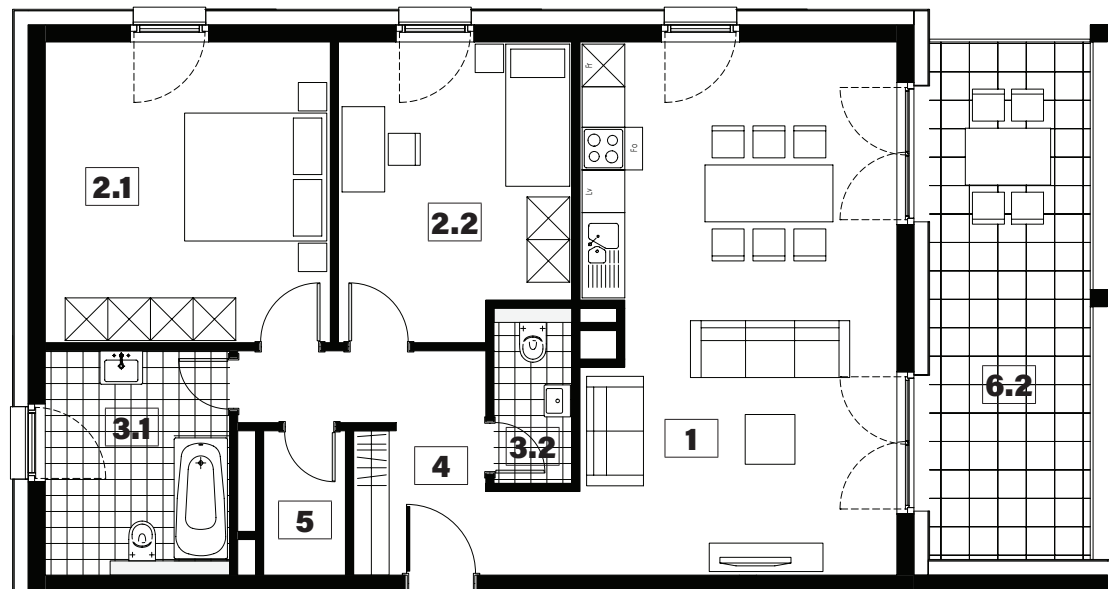
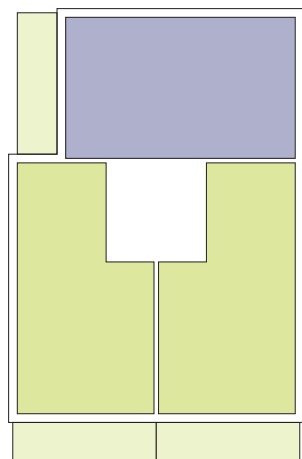
# 082



<b>1</b>	séjour/cuisine	<b>32,85m<sup>2</sup></b>
<b>2.1</b>	chambre	<b>16,95m<sup>2</sup></b>
<b>2.2</b>	chambre	<b>13,15m<sup>2</sup></b>
<b>3.1</b>	salle de bains	<b>8,20m<sup>2</sup></b>
<b>3.2</b>	w.c.	<b>2,70m<sup>2</sup></b>
<b>4</b>	hall	<b>9,00m<sup>2</sup></b>
<b>5</b>	débarras	<b>2,35m<sup>2</sup></b>
<b>6.2</b>	balcon	<b>16,45m<sup>2</sup></b>

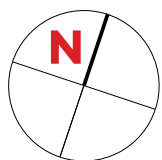
surface habitable

**85,20m<sup>2</sup>**



# APPARTEMENT TYPE

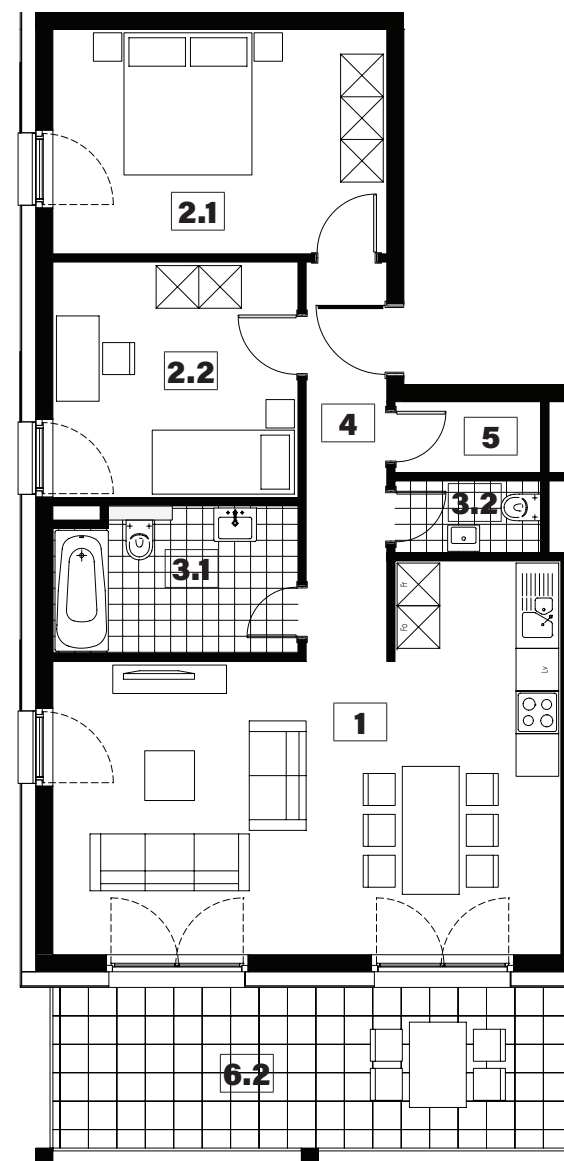
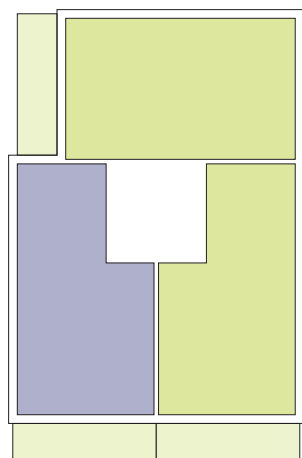
# 083



<b>1</b>	séjour/cuisine	<b>33,25m<sup>2</sup></b>
<b>2.1</b>	chambre	<b>14,85m<sup>2</sup></b>
<b>2.2</b>	chambre	<b>11,45m<sup>2</sup></b>
<b>3.1</b>	salle de bains	<b>6,90m<sup>2</sup></b>
<b>3.2</b>	w.c.	<b>2,05m<sup>2</sup></b>
<b>4</b>	hall	<b>6,40m<sup>2</sup></b>
<b>5</b>	débarras	<b>2,05m<sup>2</sup></b>
<b>6.2</b>	balcon	<b>16,50m<sup>2</sup></b>

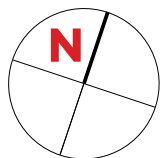
surface habitable

**76,95m<sup>2</sup>**



# APPARTEMENT TYPE

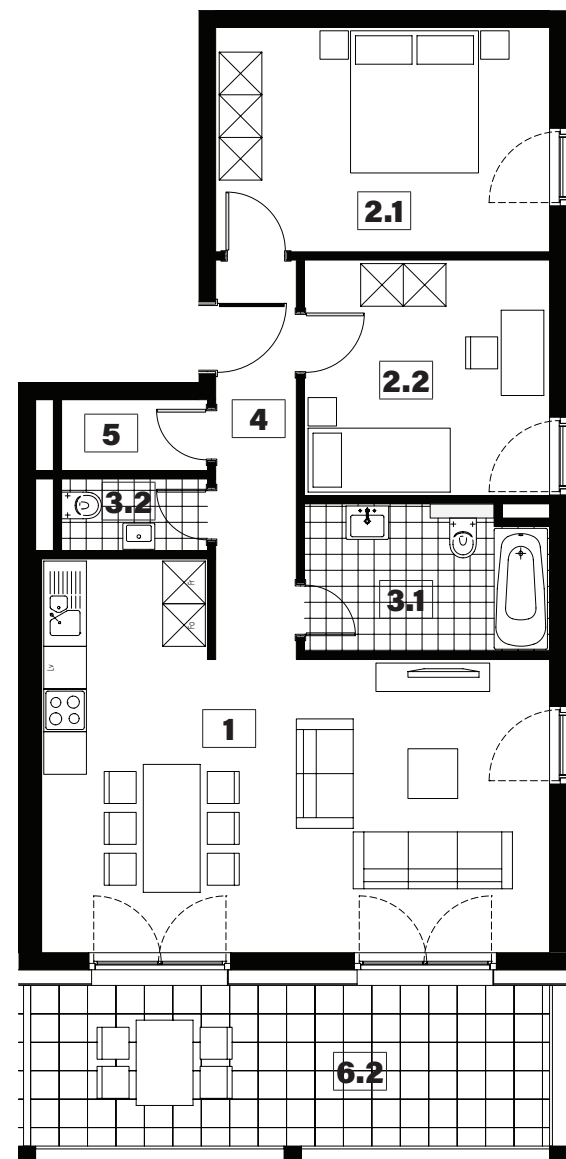
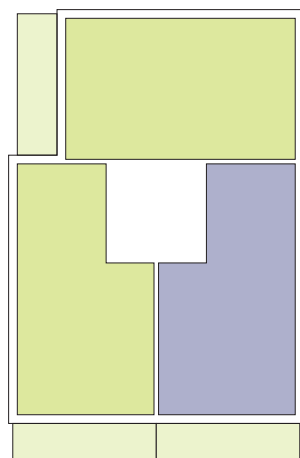
# 084

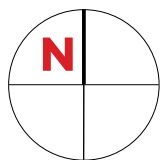


<b>1</b>	séjour/cuisine	<b>33,25m<sup>2</sup></b>
<b>2.1</b>	chambre	<b>14,85m<sup>2</sup></b>
<b>2.2</b>	chambre	<b>11,45m<sup>2</sup></b>
<b>3.1</b>	salle de bains	<b>6,90m<sup>2</sup></b>
<b>3.2</b>	w.c.	<b>2,05m<sup>2</sup></b>
<b>4</b>	hall	<b>6,40m<sup>2</sup></b>
<b>5</b>	débarras	<b>2,05m<sup>2</sup></b>
<b>6.2</b>	balcon	<b>16,50m<sup>2</sup></b>

surface habitable

**76,95m<sup>2</sup>**





# PLAN DE SITUATION



# NOTES

[illegible]



# SNHBM

**Jessica Gaspar**

Chargée des ventes

Chargée de la communication

Tel.: +352 44 82 92 - 556

E-mail: [jessica.gaspar@snhbm.lu](mailto:jessica.gaspar@snhbm.lu)

 [snhbm.lu](http://snhbm.lu)

image non contractuelle