

Résidence MIRTO



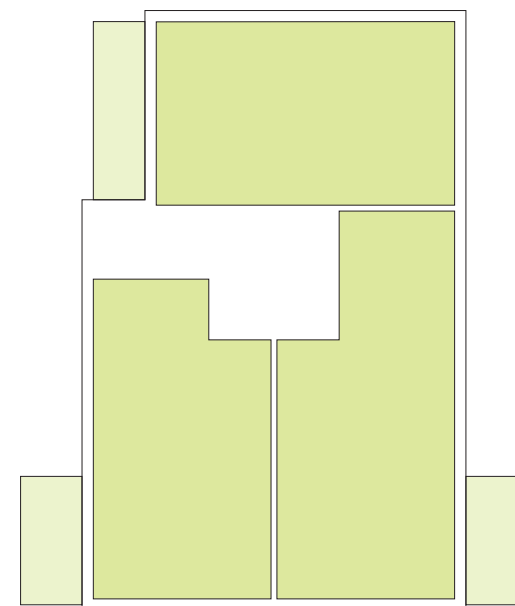
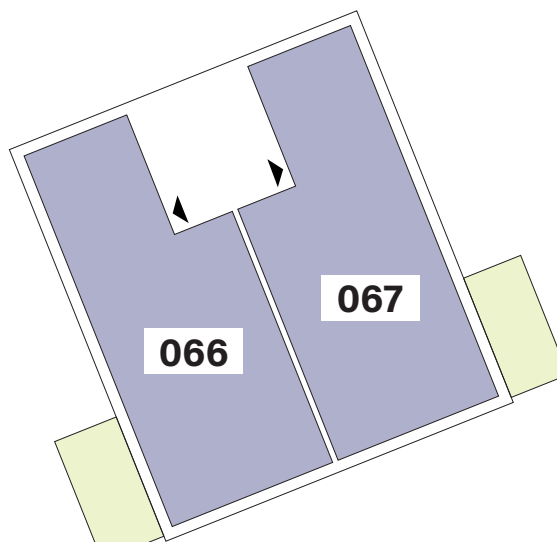
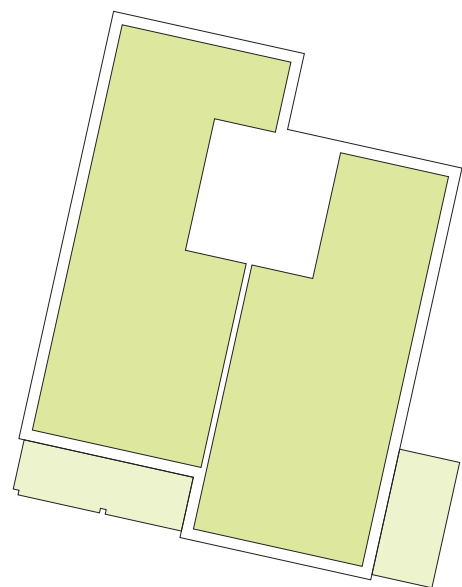
image non contractuelle

APPARTEMENTS

REZ-DE-CHAUSSÉE

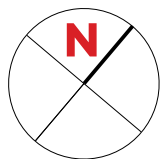
| Type | Surface Utile | surface terrasse | prix de vente subventionné TVA 3% * |
|------------|---------------------|---------------------|-------------------------------------|
| 066 | 99,71m ² | 13,60m ² | 341.446 €** |
| 067 | 99,76m ² | 13,05m ² | 341.234 €** |

- les surfaces inscrites dans ce tableau peuvent subir de légères modifications dues aux nécessités techniques de la construction.
- surface utile = surface calculée à l'intérieur des murs extérieurs.
- * primes ACE sont déjà déduites (uniquement pour les acquéreurs bénéficiant d'une prime de construction de l'Etat.)
- ** primes ACE et remboursement TVA sont déjà déduits.



APPARTEMENT TYPE

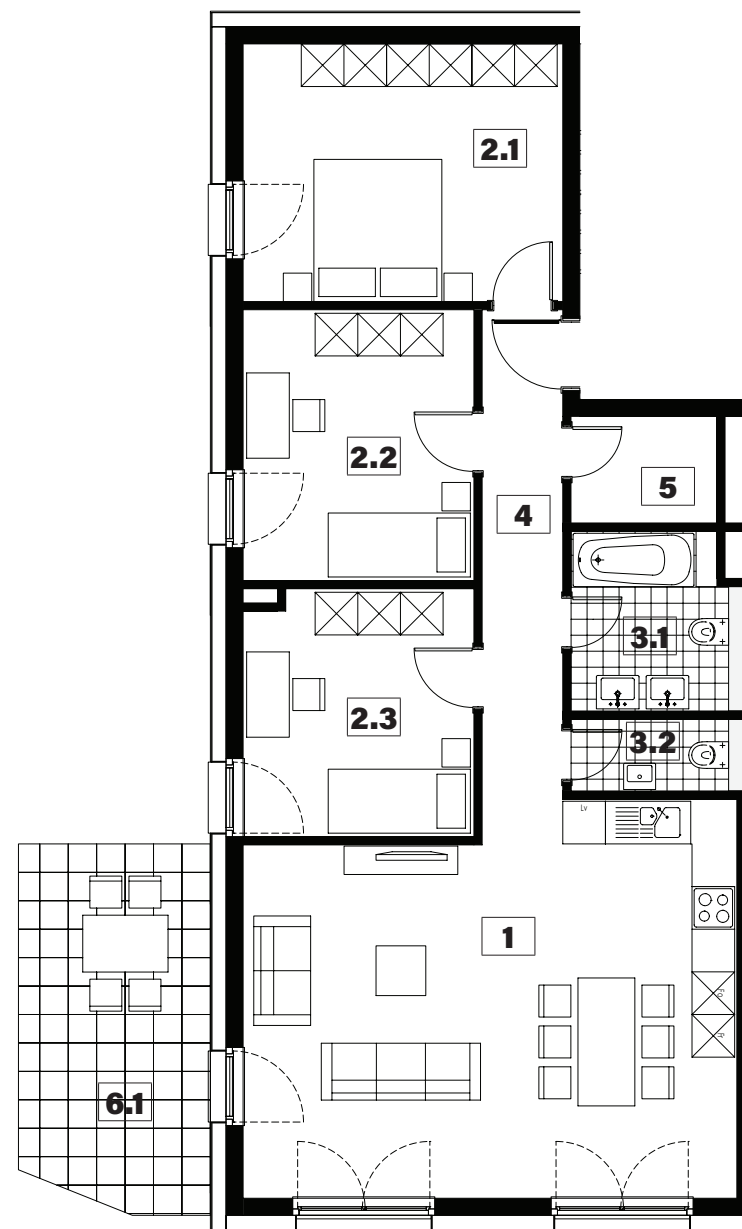
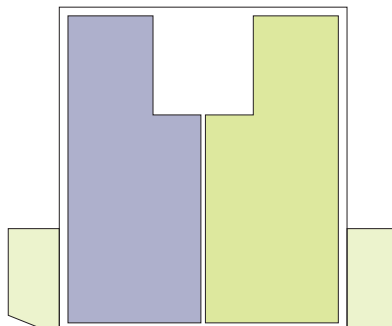
066



| | | |
|------------|----------------|---------------------------|
| 1 | séjour/cuisine | 37,30m² |
| 2.1 | chambre | 16,30m² |
| 2.2 | chambre | 12,35m² |
| 2.3 | chambre | 11,15m² |
| 3.1 | salle de bains | 5,85m² |
| 3.2 | w.c. | 2,45m² |
| 4 | hall | 7,80m² |
| 5 | débarras | 3,10m² |
| 6.1 | terrasse | 13,60m² |

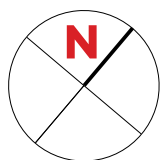
surface habitable

96,30m²



APPARTEMENT TYPE

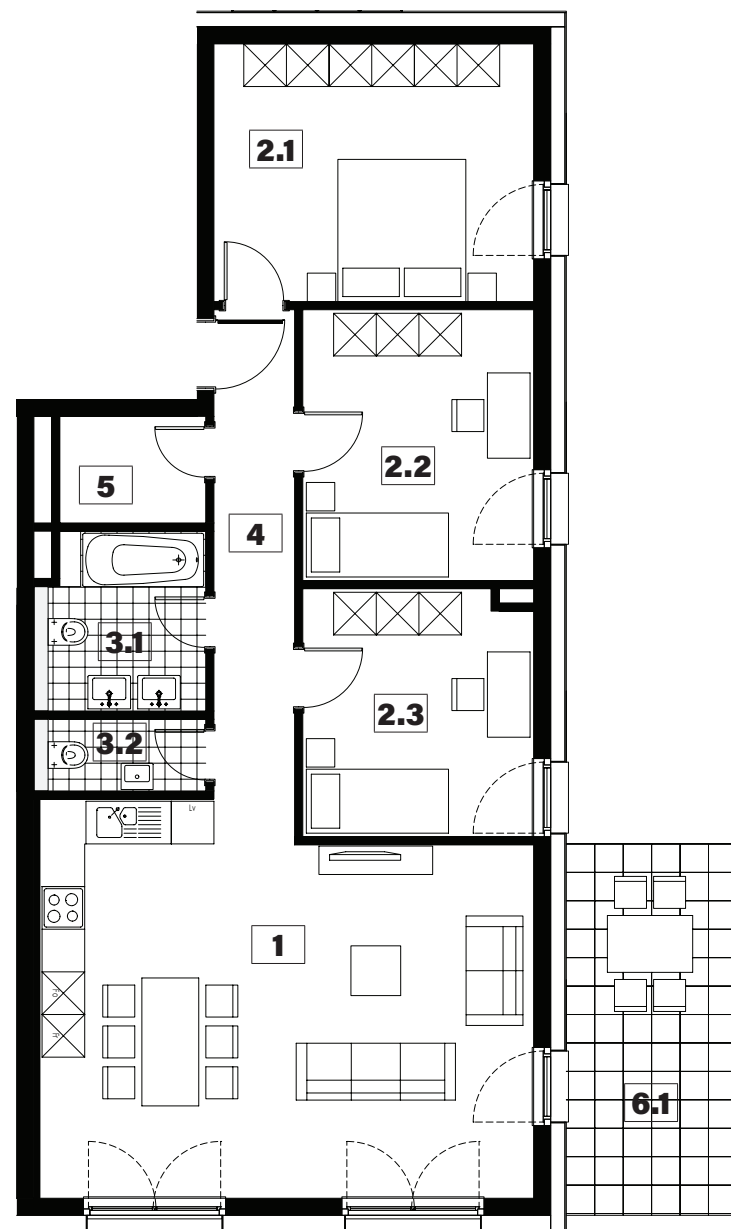
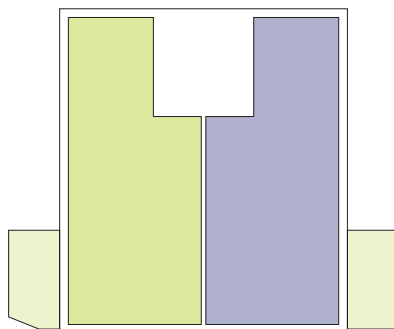
067



| | | |
|------------|----------------|---------------------------|
| 1 | séjour/cuisine | 37,30m² |
| 2.1 | chambre | 16,30m² |
| 2.2 | chambre | 12,35m² |
| 2.3 | chambre | 11,15m² |
| 3.1 | salle de bains | 5,85m² |
| 3.2 | w.c. | 2,45m² |
| 4 | hall | 7,80m² |
| 5 | débarras | 3,10m² |
| 6.1 | terrasse | 13,05m² |

surface habitable

96,30m²

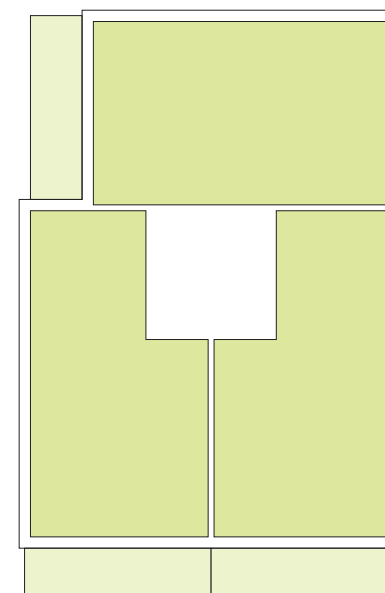
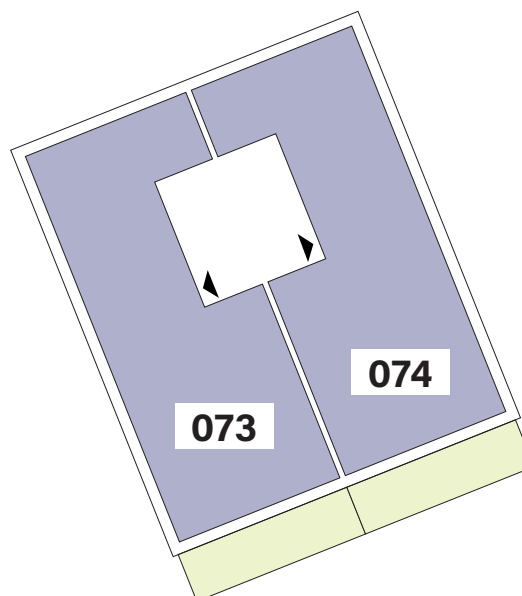
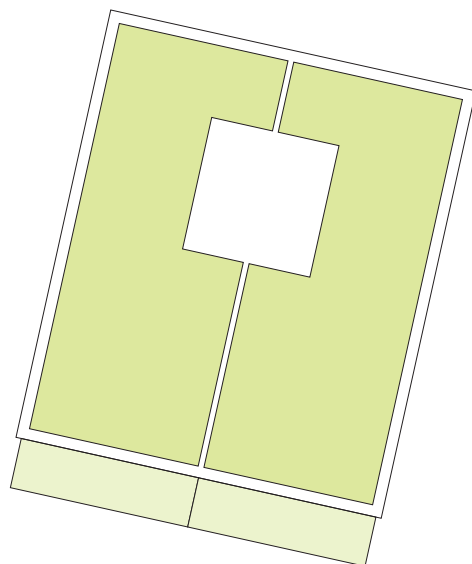


APPARTEMENTS

1^{er} ÉTAGE

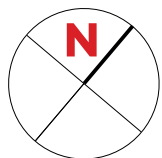
| Type | Surface Utile | surface balcon | prix de vente subventionné TVA 3% * |
|------------|----------------------|---------------------|-------------------------------------|
| 073 | 102,12m ² | 16,05m ² | 367.876 €** |
| 074 | 102,12m ² | 16,05m ² | 368.219 €** |

- les surfaces inscrites dans ce tableau peuvent subir de légères modifications dues aux nécessités techniques de la construction.
- surface utile = surface calculée à l'intérieur des murs extérieurs.
- * primes ACE sont déjà déduites (uniquement pour les acquéreurs bénéficiant d'une prime de construction de l'Etat.)
- ** primes ACE et remboursement TVA sont déjà déduits.



APPARTEMENT TYPE

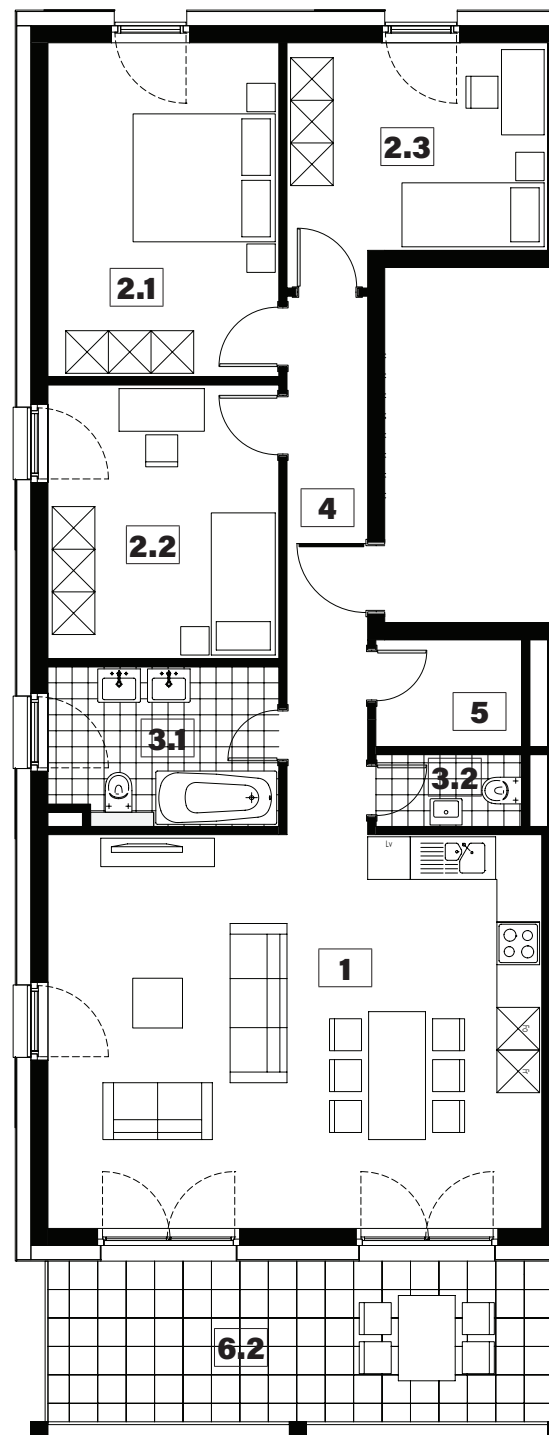
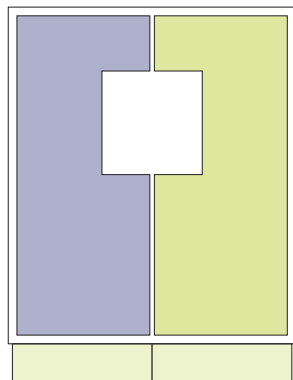
073



| | | |
|------------|----------------|---------------------------|
| 1 | séjour/cuisine | 38,95m² |
| 2.1 | chambre | 15,25m² |
| 2.2 | chambre | 12,50m² |
| 2.3 | chambre | 11,30m² |
| 3.1 | salle de bains | 7,10m² |
| 3.2 | w.c. | 2,05m² |
| 4 | hall | 8,60m² |
| 5 | débarras | 3,10m² |
| 6.2 | balcon | 16,05m² |

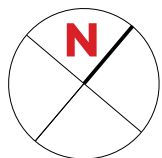
surface habitable

98,85m²



APPARTEMENT TYPE

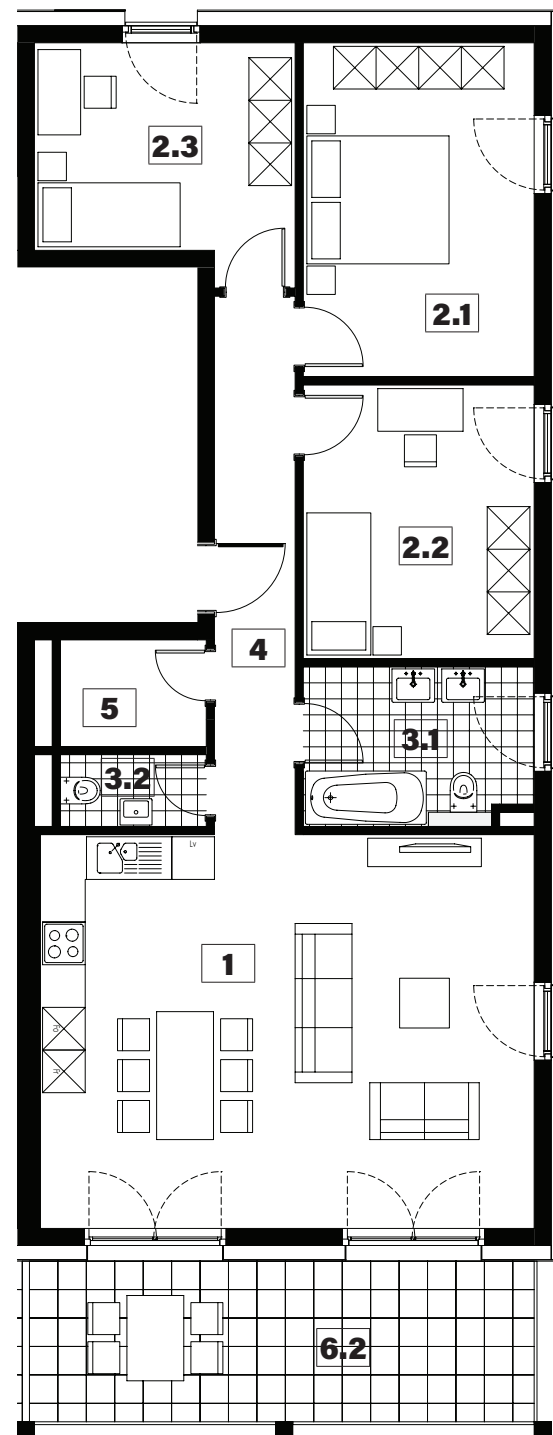
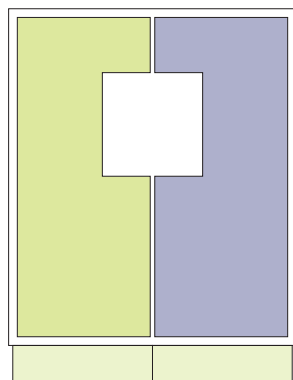
074



| | | |
|------------|----------------|---------------------------|
| 1 | séjour/cuisine | 38,95m² |
| 2.1 | chambre | 15,25m² |
| 2.2 | chambre | 12,50m² |
| 2.3 | chambre | 11,30m² |
| 3.1 | salle de bains | 7,10m² |
| 3.2 | w.c. | 2,05m² |
| 4 | hall | 8,60m² |
| 5 | débarras | 3,10m² |
| 6.2 | balcon | 16,05m² |

surface habitable

98,85m²

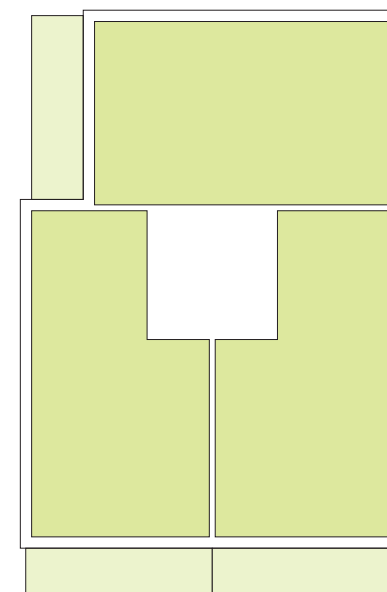
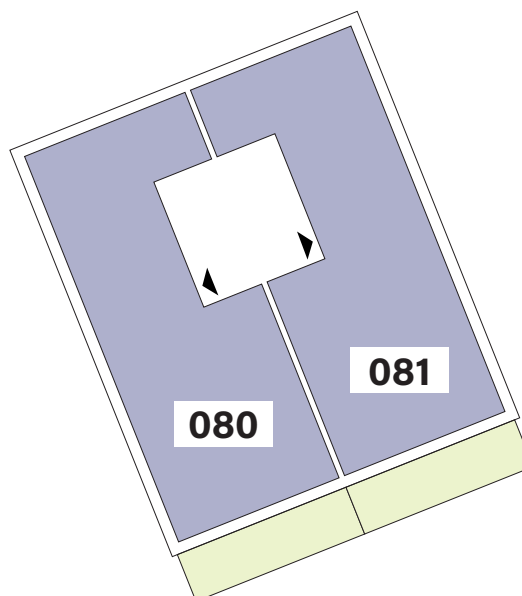
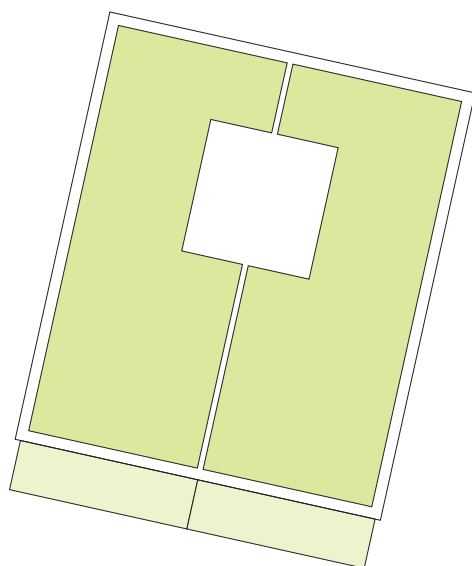


APPARTEMENTS

2^{ème} ÉTAGE

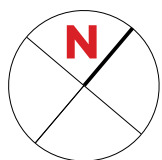
| Type | Surface Utile | surface balcon | prix de vente subventionné TVA 3% * |
|------------|----------------------|---------------------|-------------------------------------|
| 080 | 102,12m ² | 16,05m ² | 376.646 €** |
| 081 | 102,12m ² | 16,05m ² | 377.000 €** |

- les surfaces inscrites dans ce tableau peuvent subir de légères modifications dues aux nécessités techniques de la construction.
- surface utile = surface calculée à l'intérieur des murs extérieurs.
- * primes ACE sont déjà déduites (uniquement pour les acquéreurs bénéficiant d'une prime de construction de l'Etat.)
- ** primes ACE et remboursement TVA sont déjà déduits.



APPARTEMENT TYPE

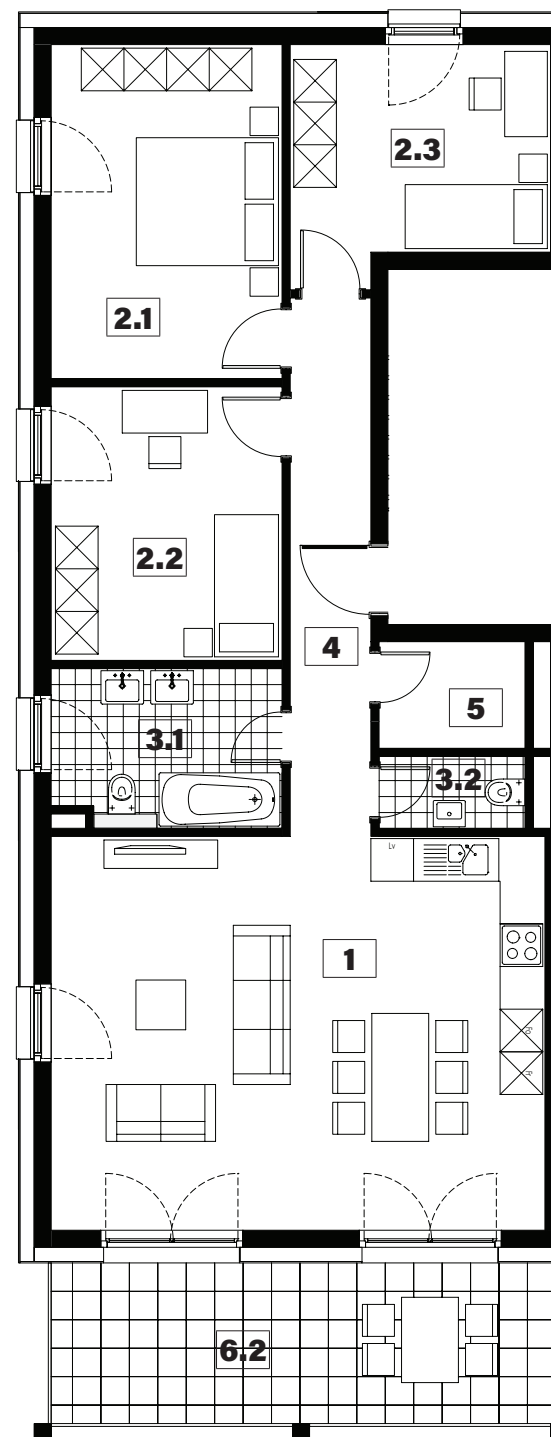
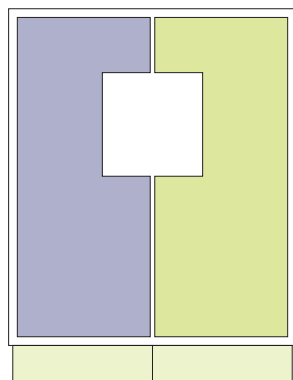
080



| | | |
|------------|----------------|---------------------------|
| 1 | séjour/cuisine | 38,95m² |
| 2.1 | chambre | 15,25m² |
| 2.2 | chambre | 12,50m² |
| 2.3 | chambre | 11,30m² |
| 3.1 | salle de bains | 7,10m² |
| 3.2 | w.c. | 2,05m² |
| 4 | hall | 8,60m² |
| 5 | débarras | 3,10m² |
| 6.2 | balcon | 16,05m² |

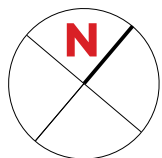
surface habitable

98,85m²



APPARTEMENT TYPE

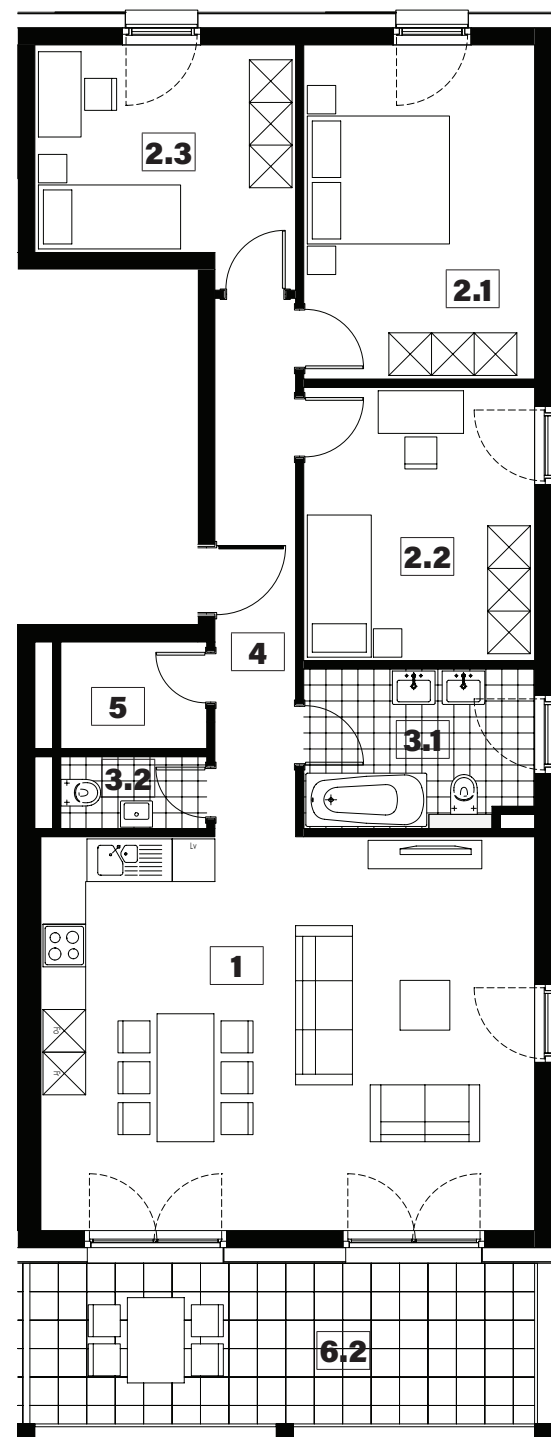
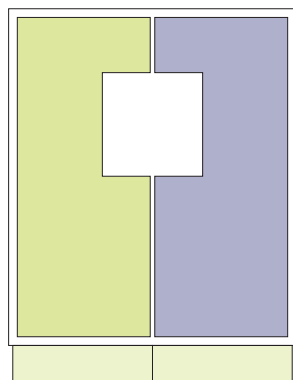
081

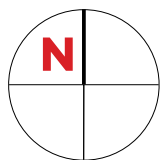


| | | |
|------------|----------------|---------------------------|
| 1 | séjour/cuisine | 38,95m² |
| 2.1 | chambre | 15,25m² |
| 2.2 | chambre | 12,50m² |
| 2.3 | chambre | 11,30m² |
| 3.1 | salle de bains | 7,10m² |
| 3.2 | w.c. | 2,05m² |
| 4 | hall | 8,60m² |
| 5 | débarras | 3,10m² |
| 6.2 | balcon | 16,05m² |

surface habitable

98,85m²





PLAN DE SITUATION





SNHBM

Jessica Gaspar

Chargée des ventes

Chargée de la communication

Tel.: +352 44 82 92 - 556

E-mail: jessica.gaspar@snhbm.lu

 snhbm.lu

image non contractuelle