

# Résidence ALBI



Image non contractuelle

## APPARTEMENTS

# REZ-DE-CHAUSSÉE

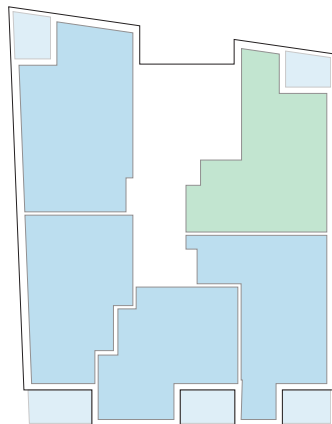
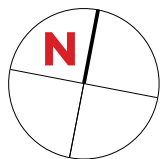


| Type       | Surface Utile       | surface terrasse    |
|------------|---------------------|---------------------|
| <b>023</b> | 88,45m <sup>2</sup> | 8,30m <sup>2</sup>  |
| <b>024</b> | 85,18m <sup>2</sup> | 9,05m <sup>2</sup>  |
| <b>025</b> | 76,29m <sup>2</sup> | 10,10m <sup>2</sup> |
| <b>026</b> | 81,52m <sup>2</sup> | 11,65m <sup>2</sup> |
| <b>027</b> | 99,33m <sup>2</sup> | 9,05m <sup>2</sup>  |

- les surfaces inscrites dans ce tableau peuvent subir de légères modifications dues aux nécessités techniques de la construction.
- surface utile = surface calculée à l'intérieur des murs extérieurs.

APPARTEMENT TYPE

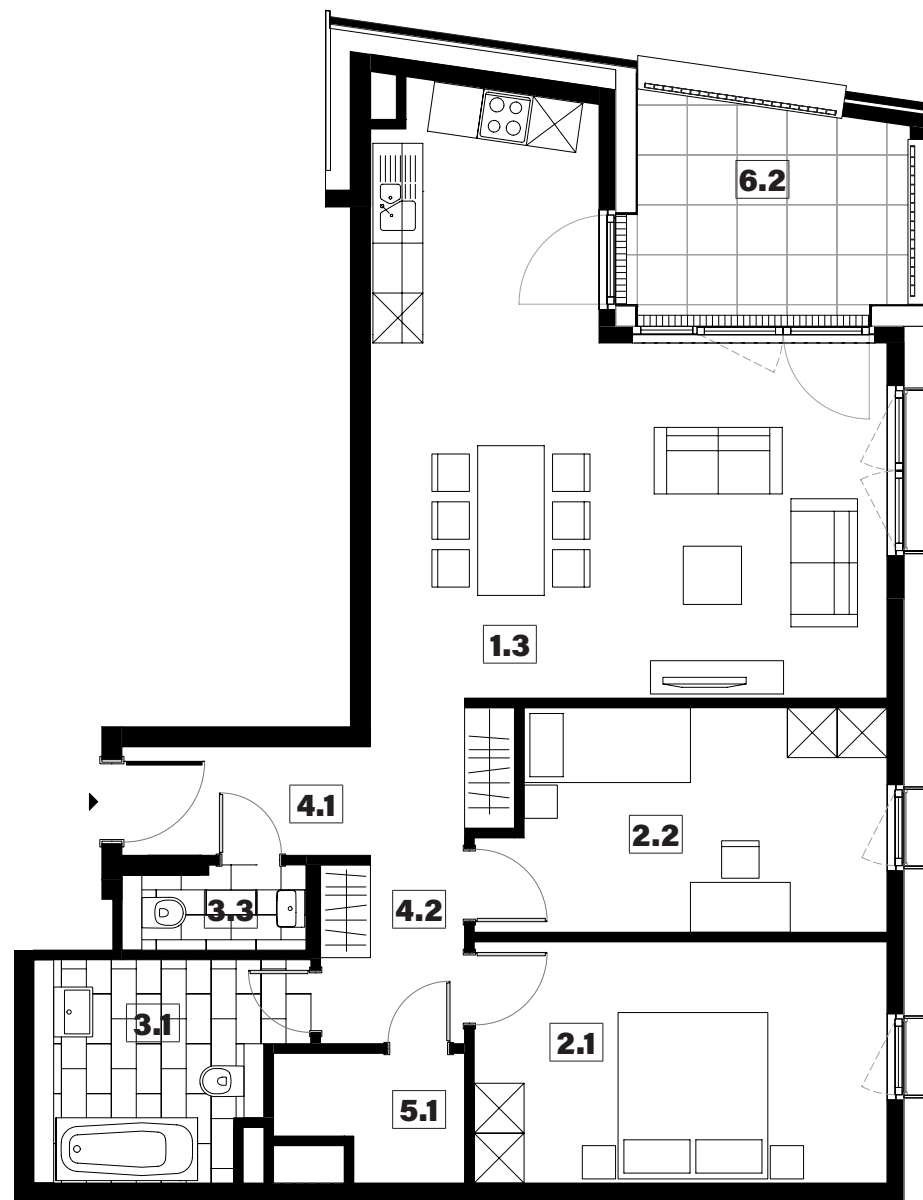
023



|     |                |                     |
|-----|----------------|---------------------|
| 1.3 | séjour/cuisine | 34,65m <sup>2</sup> |
| 2.1 | chambre        | 14,40m <sup>2</sup> |
| 2.2 | chambre        | 12,45m <sup>2</sup> |
| 3.1 | salle de bains | 7,70m <sup>2</sup>  |
| 3.3 | w.c.           | 2,10m <sup>2</sup>  |
| 4.1 | hall           | 3,90m <sup>2</sup>  |
| 4.2 | couloir        | 6,85m <sup>2</sup>  |
| 5.1 | technique      | 3,00m <sup>2</sup>  |
| 6.2 | loggia         | 8,30m <sup>2</sup>  |

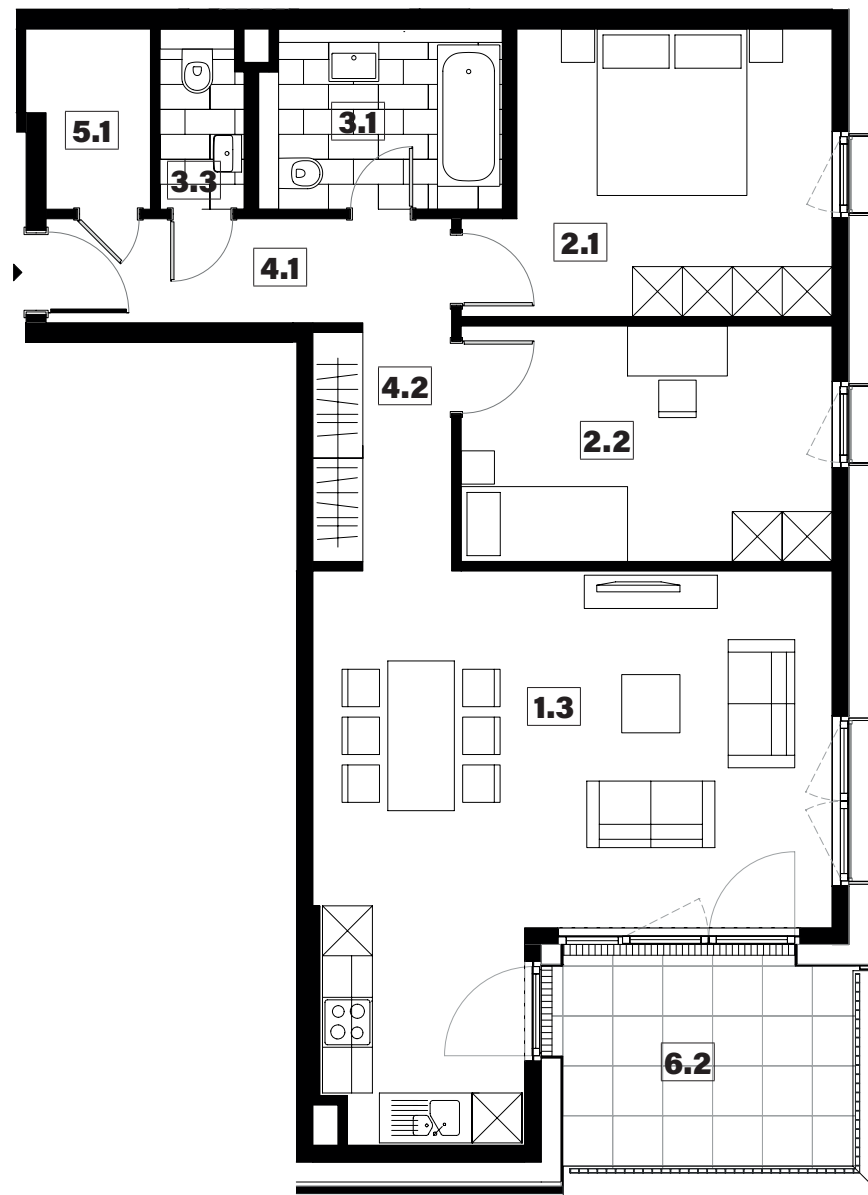
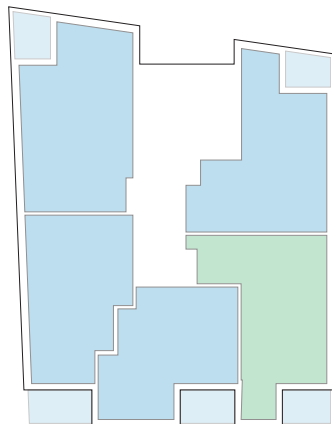
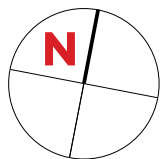
surface habitable

**85,05m<sup>2</sup>**



APARTEMENT TYPE

024



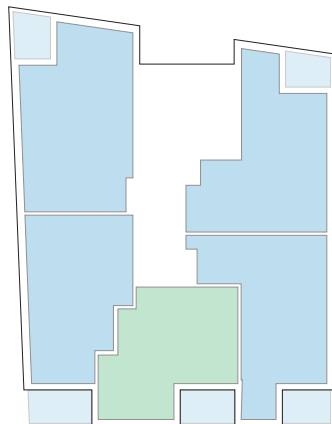
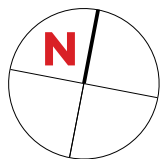
|     |                |                     |
|-----|----------------|---------------------|
| 1.3 | séjour/cuisine | 33,15m <sup>2</sup> |
| 2.1 | chambre        | 13,85m <sup>2</sup> |
| 2.2 | chambre        | 12,60m <sup>2</sup> |
| 3.1 | salle de bains | 6,20m <sup>2</sup>  |
| 3.3 | w.c.           | 2,10m <sup>2</sup>  |
| 4.1 | hall           | 4,75m <sup>2</sup>  |
| 4.2 | couloir        | 6,15m <sup>2</sup>  |
| 5.1 | technique      | 2,95m <sup>2</sup>  |
| 6.2 | loggia         | 9,05m <sup>2</sup>  |

surface habitable

**81,75m<sup>2</sup>**

APARTEMENT TYPE

025



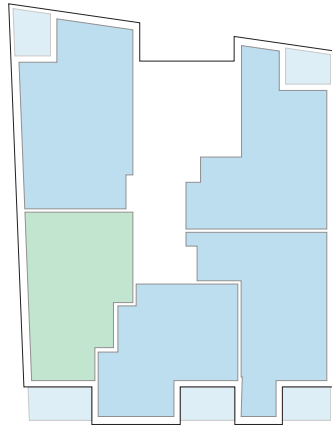
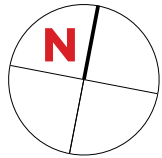
|     |                |                     |
|-----|----------------|---------------------|
| 1.3 | séjour/cuisine | 30,25m <sup>2</sup> |
| 2.1 | chambre        | 13,35m <sup>2</sup> |
| 2.2 | chambre        | 12,00m <sup>2</sup> |
| 3.1 | salle de bains | 6,10m <sup>2</sup>  |
| 3.3 | w.c.           | 2,15m <sup>2</sup>  |
| 4.1 | hall           | 2,15m <sup>2</sup>  |
| 4.2 | couloir        | 4,60m <sup>2</sup>  |
| 5.1 | technique      | 1,70m <sup>2</sup>  |
| 6.2 | loggia         | 10,10m <sup>2</sup> |

surface habitable

**72,30m<sup>2</sup>**

APPARTEMENT TYPE

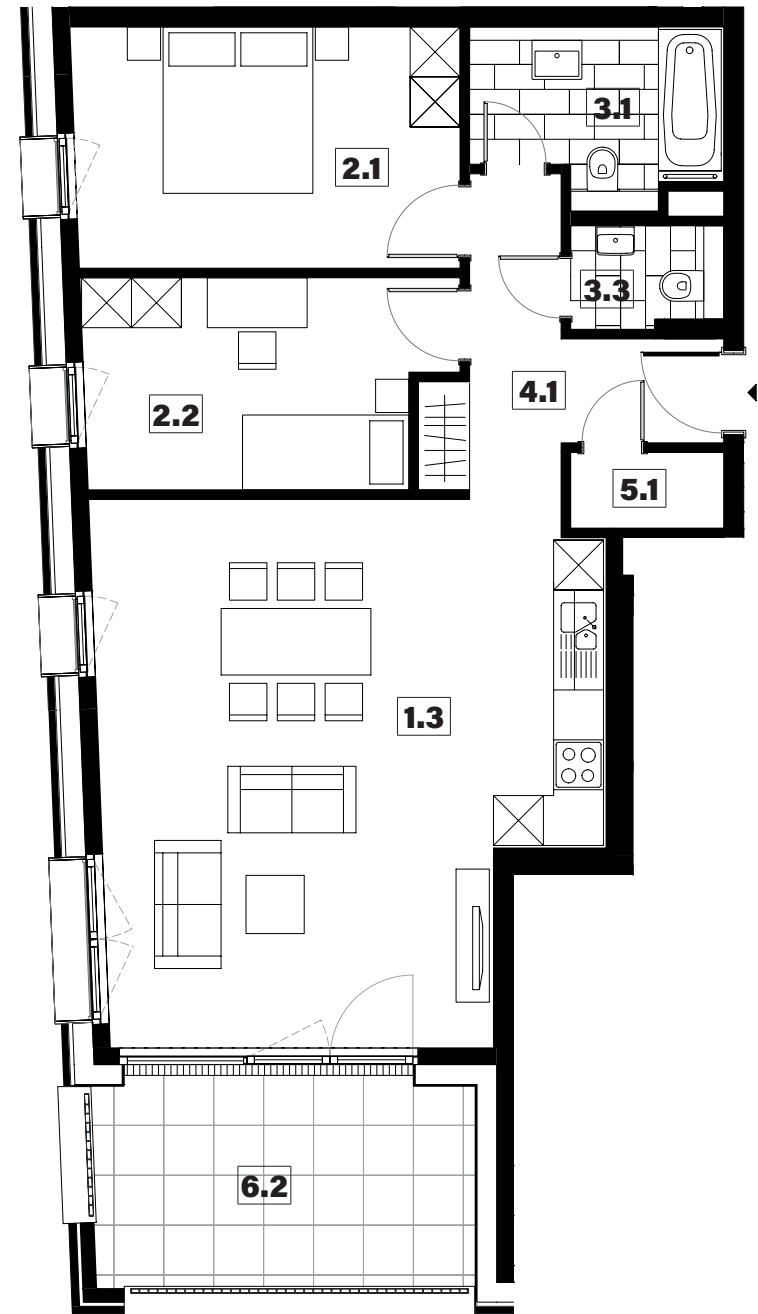
026



|     |                |                     |
|-----|----------------|---------------------|
| 1.3 | séjour/cuisine | 37,10m <sup>2</sup> |
| 2.1 | chambre        | 13,40m <sup>2</sup> |
| 2.2 | chambre        | 10,65m <sup>2</sup> |
| 3.1 | salle de bains | 5,80m <sup>2</sup>  |
| 3.3 | w.c.           | 2,15m <sup>2</sup>  |
| 4.1 | hall           | 7,55m <sup>2</sup>  |
| 5.1 | technique      | 1,65m <sup>2</sup>  |
| 6.2 | loggia         | 11,65m <sup>2</sup> |

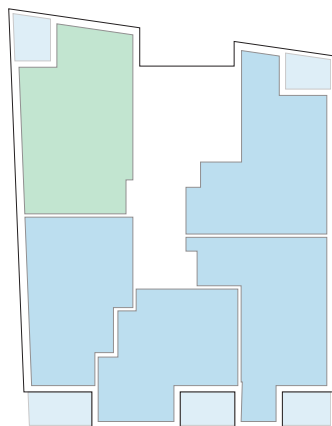
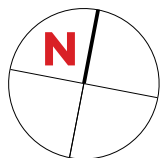
surface habitable

**78,30m<sup>2</sup>**



APPARTEMENT TYPE

027



|     |                |                     |
|-----|----------------|---------------------|
| 1.3 | séjour/cuisine | 32,85m <sup>2</sup> |
| 2.1 | chambre        | 14,10m <sup>2</sup> |
| 2.2 | chambre        | 12,85m <sup>2</sup> |
| 2.3 | chambre        | 12,05m <sup>2</sup> |
| 3.1 | salle de bains | 5,80m <sup>2</sup>  |
| 3.3 | w.c.           | 2,00m <sup>2</sup>  |
| 4.1 | hall           | 4,75m <sup>2</sup>  |
| 4.2 | couloir        | 6,10m <sup>2</sup>  |
| 5.1 | technique      | 1,00m <sup>2</sup>  |
| 5.2 | débarras       | 2,55m <sup>2</sup>  |
| 6.2 | loggia         | 9,05m <sup>2</sup>  |

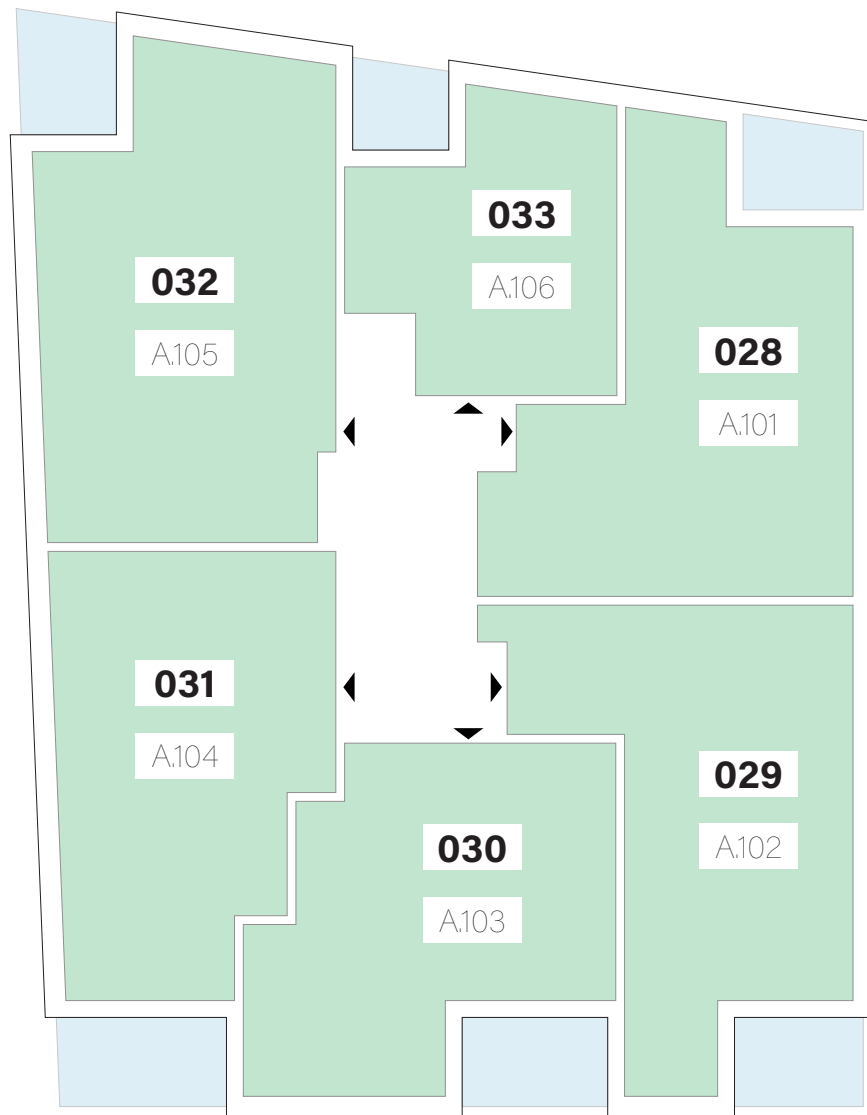
surface habitable

**94,05m<sup>2</sup>**



# APPARTEMENTS

## 1<sup>er</sup> ÉTAGE



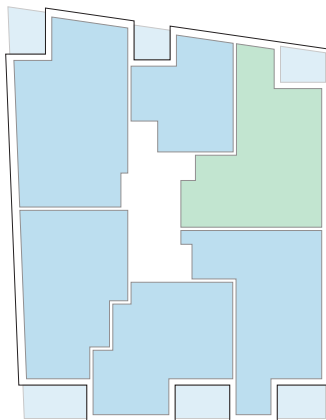
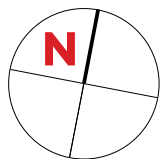
| Type       | Surface Utile       | surface terrasse    |
|------------|---------------------|---------------------|
| <b>028</b> | 88,45m <sup>2</sup> | 8,30m <sup>2</sup>  |
| <b>029</b> | 85,18m <sup>2</sup> | 9,05m <sup>2</sup>  |
| <b>030</b> | 76,29m <sup>2</sup> | 10,10m <sup>2</sup> |
| <b>031</b> | 81,52m <sup>2</sup> | 11,65m <sup>2</sup> |
| <b>032</b> | 99,42m <sup>2</sup> | 9,05m <sup>2</sup>  |
| <b>033</b> | 49,52m <sup>2</sup> | 6,65m <sup>2</sup>  |

- les surfaces inscrites dans ce tableau peuvent subir de légères modifications dues aux nécessités techniques de la construction.
- surface utile = surface calculée à l'intérieur des murs extérieurs.



APARTEMENT TYPE

028



|     |                |                     |
|-----|----------------|---------------------|
| 1.3 | séjour/cuisine | 34,65m <sup>2</sup> |
| 2.1 | chambre        | 14,40m <sup>2</sup> |
| 2.2 | chambre        | 12,45m <sup>2</sup> |
| 3.1 | salle de bains | 7,70m <sup>2</sup>  |
| 3.3 | w.c.           | 2,10m <sup>2</sup>  |
| 4.1 | hall           | 3,90m <sup>2</sup>  |
| 4.2 | couloir        | 6,85m <sup>2</sup>  |
| 5.1 | technique      | 3,00m <sup>2</sup>  |
| 6.2 | loggia         | 8,30m <sup>2</sup>  |

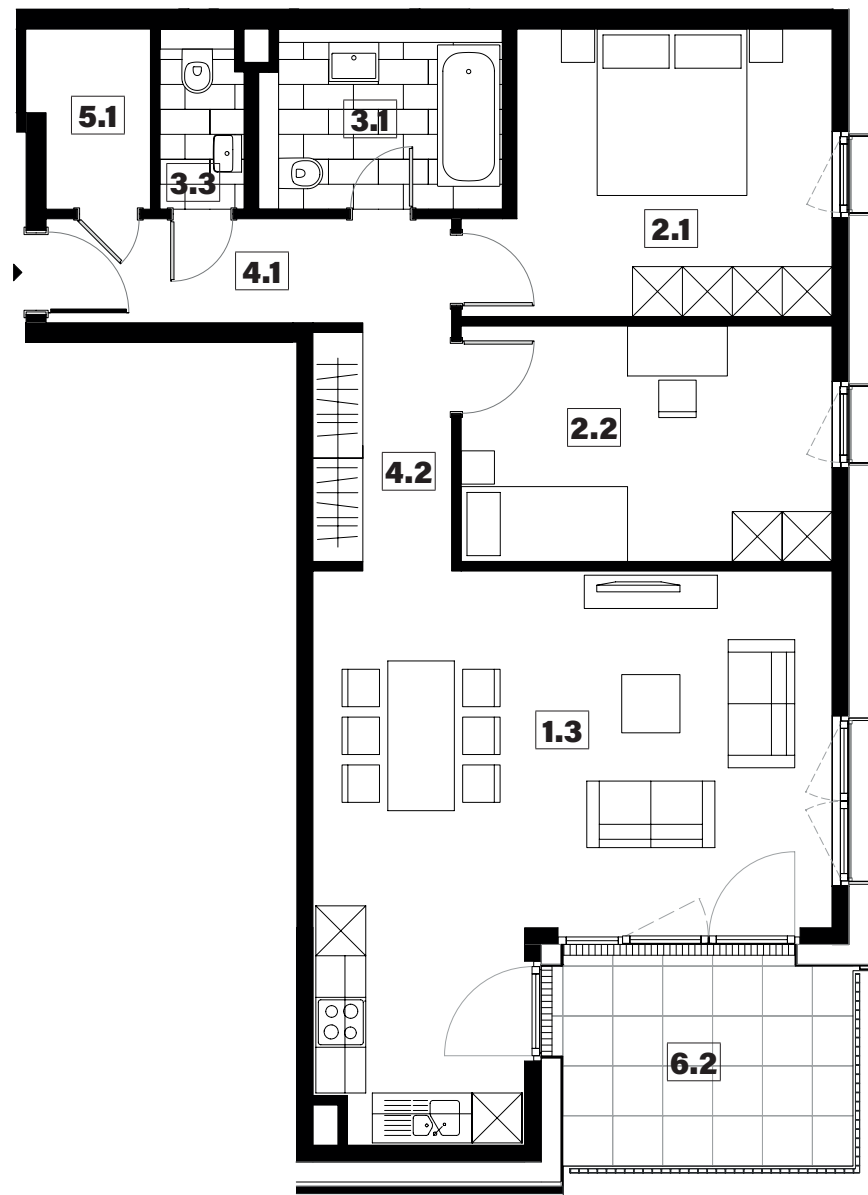
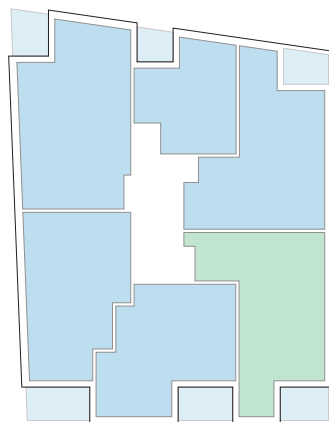
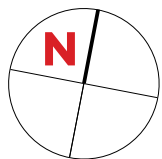
surface habitable

**85,05m<sup>2</sup>**



APARTEMENT TYPE

029



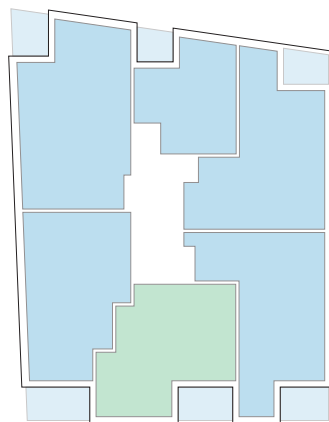
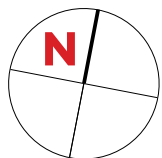
|     |                |                     |
|-----|----------------|---------------------|
| 1.3 | séjour/cuisine | 33,15m <sup>2</sup> |
| 2.1 | chambre        | 13,85m <sup>2</sup> |
| 2.2 | chambre        | 12,60m <sup>2</sup> |
| 3.1 | salle de bains | 6,20m <sup>2</sup>  |
| 3.3 | w.c.           | 2,10m <sup>2</sup>  |
| 4.1 | hall           | 4,75m <sup>2</sup>  |
| 4.2 | couloir        | 6,15m <sup>2</sup>  |
| 5.1 | technique      | 2,95m <sup>2</sup>  |
| 6.2 | loggia         | 9,05m <sup>2</sup>  |

surface habitable

**81,75m<sup>2</sup>**

APARTEMENT TYPE

030



|     |                |                     |
|-----|----------------|---------------------|
| 1.3 | séjour/cuisine | 30,25m <sup>2</sup> |
| 2.1 | chambre        | 13,35m <sup>2</sup> |
| 2.2 | chambre        | 12,00m <sup>2</sup> |
| 3.1 | salle de bains | 6,10m <sup>2</sup>  |
| 3.3 | w.c.           | 2,15m <sup>2</sup>  |
| 4.1 | hall           | 2,15m <sup>2</sup>  |
| 4.2 | couloir        | 4,60m <sup>2</sup>  |
| 5.1 | technique      | 1,70m <sup>2</sup>  |
| 6.2 | loggia         | 10,10m <sup>2</sup> |

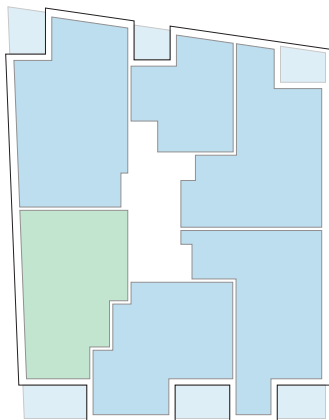
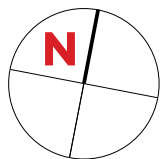
surface habitable

**72,30m<sup>2</sup>**



APPARTEMENT TYPE

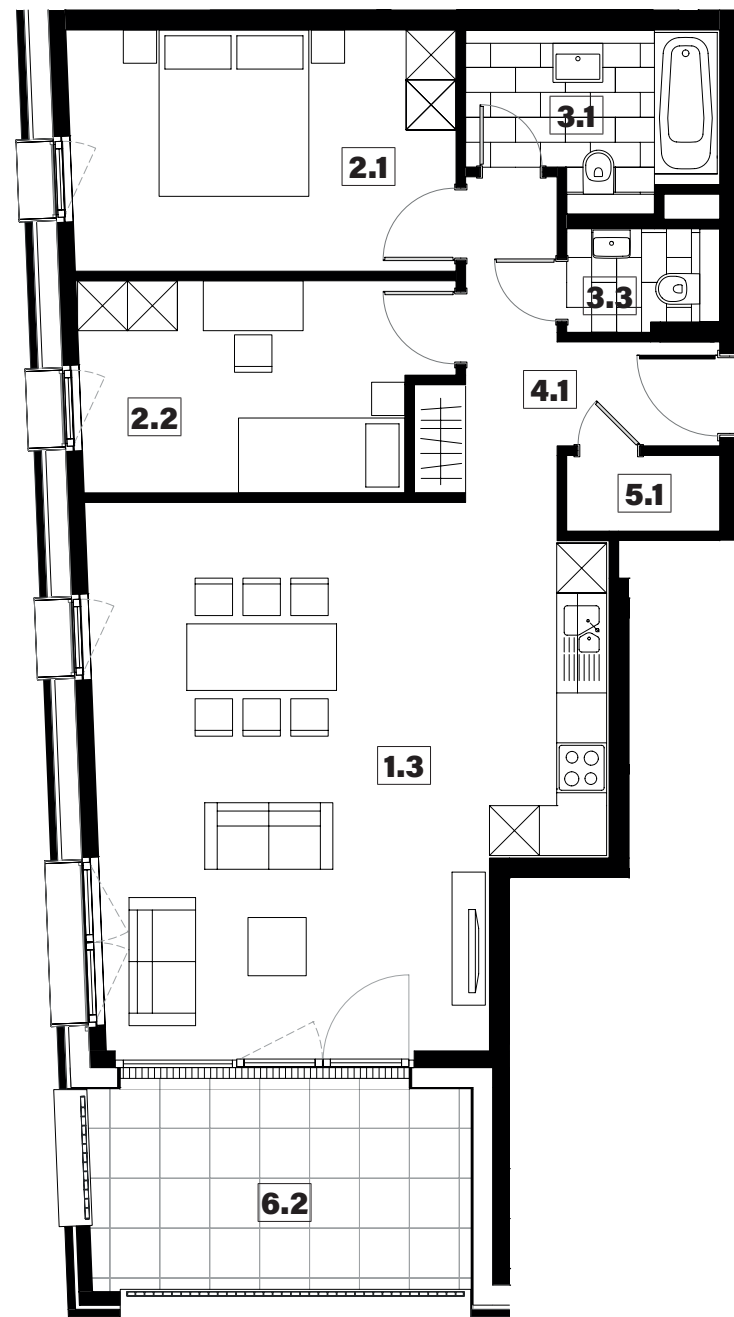
031



|     |                |                     |
|-----|----------------|---------------------|
| 1.3 | séjour/cuisine | 37,10m <sup>2</sup> |
| 2.1 | chambre        | 13,40m <sup>2</sup> |
| 2.2 | chambre        | 10,65m <sup>2</sup> |
| 3.1 | salle de bains | 5,80m <sup>2</sup>  |
| 3.3 | w.c.           | 2,15m <sup>2</sup>  |
| 4.1 | hall           | 7,55m <sup>2</sup>  |
| 5.1 | technique      | 1,65m <sup>2</sup>  |
| 6.2 | loggia         | 11,65m <sup>2</sup> |

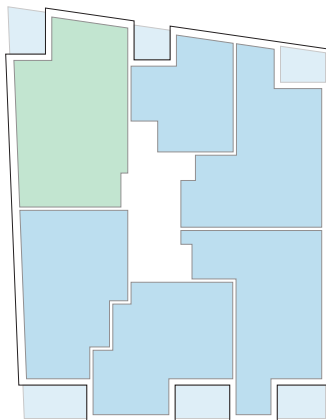
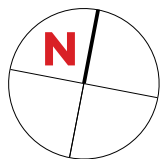
surface habitable

**78,30m<sup>2</sup>**



APPARTEMENT TYPE

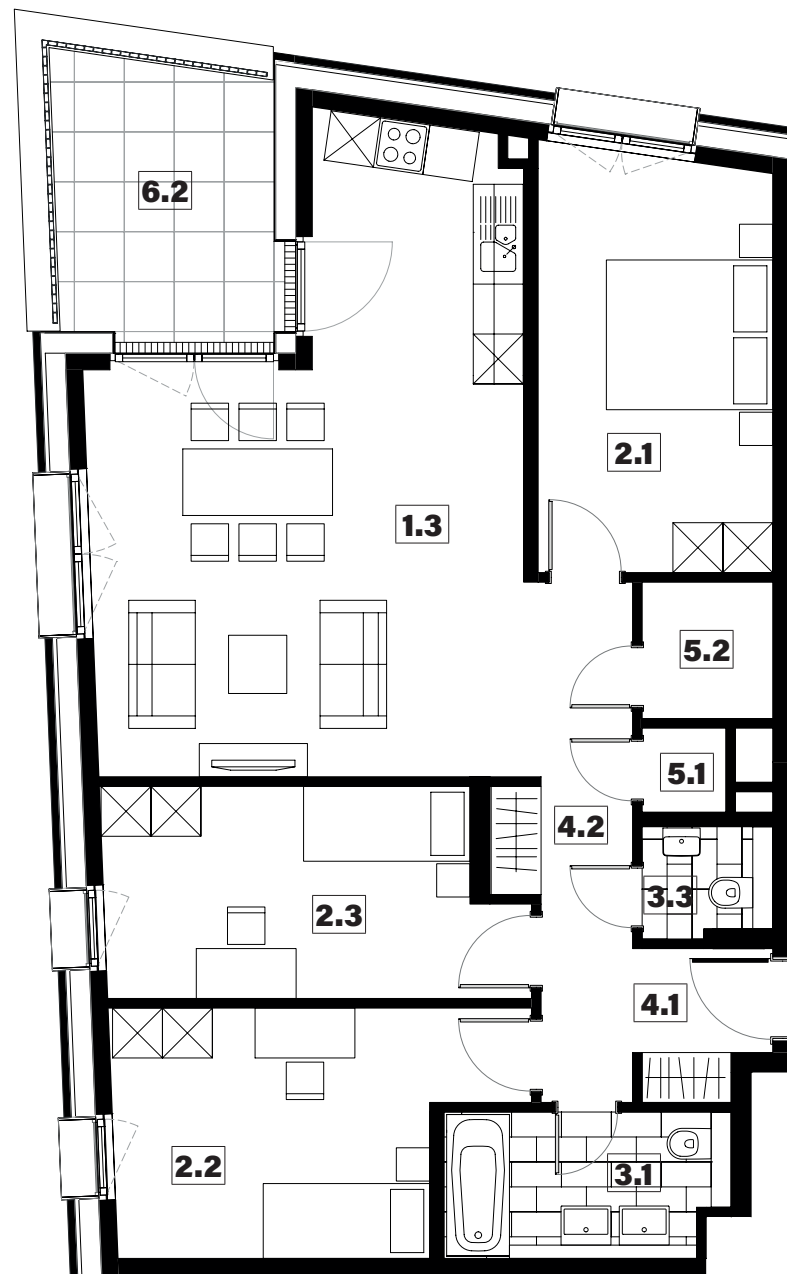
032



|     |                |                     |
|-----|----------------|---------------------|
| 1.3 | séjour/cuisine | 32,90m <sup>2</sup> |
| 2.1 | chambre        | 14,10m <sup>2</sup> |
| 2.2 | chambre        | 12,85m <sup>2</sup> |
| 2.3 | chambre        | 12,05m <sup>2</sup> |
| 3.1 | salle de bains | 5,80m <sup>2</sup>  |
| 3.3 | w.c.           | 2,00m <sup>2</sup>  |
| 4.1 | hall           | 4,75m <sup>2</sup>  |
| 4.2 | couloir        | 6,10m <sup>2</sup>  |
| 5.1 | technique      | 1,00m <sup>2</sup>  |
| 5.2 | débarras       | 2,55m <sup>2</sup>  |
| 6.2 | loggia         | 9,05m <sup>2</sup>  |

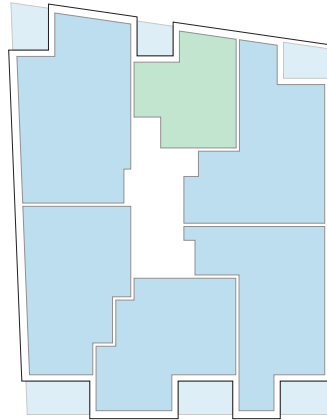
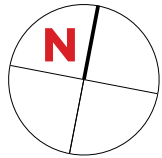
surface habitable

**94,10m<sup>2</sup>**



# APPARTEMENT TYPE

# 033



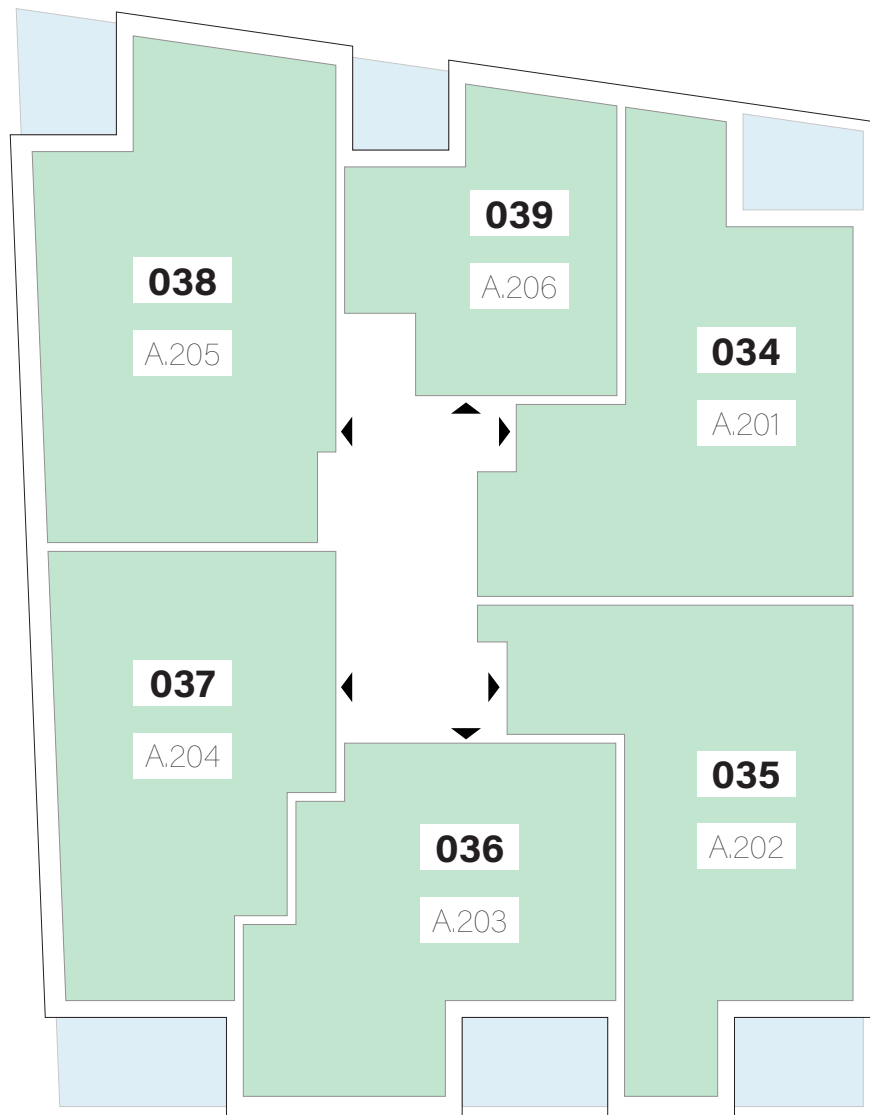
|     |                |                     |
|-----|----------------|---------------------|
| 1.3 | séjour/cuisine | 24,40m <sup>2</sup> |
| 2.1 | chambre        | 12,75m <sup>2</sup> |
| 3.1 | salle de bains | 5,75m <sup>2</sup>  |
| 4.1 | hall           | 3,45m <sup>2</sup>  |
| 5.1 | technique      | 1,40m <sup>2</sup>  |
| 6.2 | loggia         | 6,65m <sup>2</sup>  |

surface habitable

**47,75m<sup>2</sup>**

# APPARTEMENTS

## 2<sup>ème</sup> ÉTAGE

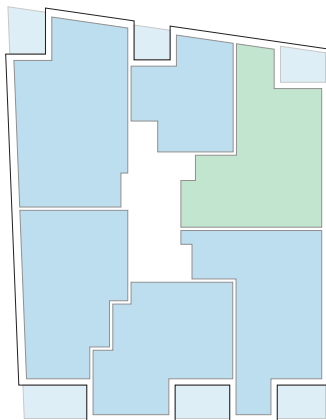
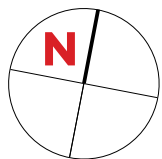


| Type       | Surface Utile       | surface terrasse    |
|------------|---------------------|---------------------|
| <b>034</b> | 88,45m <sup>2</sup> | 8,30m <sup>2</sup>  |
| <b>035</b> | 85,18m <sup>2</sup> | 9,05m <sup>2</sup>  |
| <b>036</b> | 76,29m <sup>2</sup> | 10,10m <sup>2</sup> |
| <b>037</b> | 81,52m <sup>2</sup> | 11,65m <sup>2</sup> |
| <b>038</b> | 99,42m <sup>2</sup> | 9,05m <sup>2</sup>  |
| <b>039</b> | 49,52m <sup>2</sup> | 6,65m <sup>2</sup>  |

- les surfaces inscrites dans ce tableau peuvent subir de légères modifications dues aux nécessités techniques de la construction.
- surface utile = surface calculée à l'intérieur des murs extérieurs.

APPARTEMENT TYPE

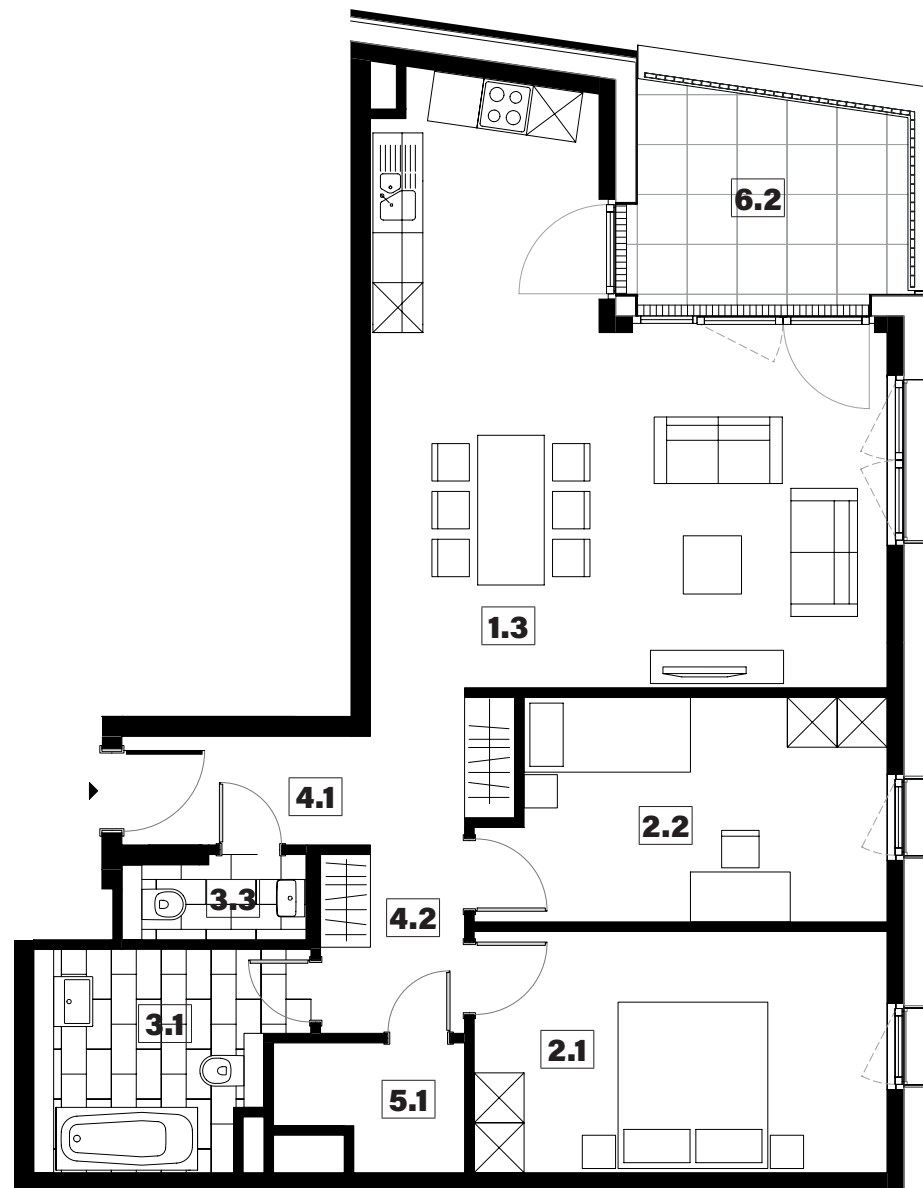
034



|     |                |                     |
|-----|----------------|---------------------|
| 1.3 | séjour/cuisine | 34,65m <sup>2</sup> |
| 2.1 | chambre        | 14,40m <sup>2</sup> |
| 2.2 | chambre        | 12,45m <sup>2</sup> |
| 3.1 | salle de bains | 7,70m <sup>2</sup>  |
| 3.3 | w.c.           | 2,10m <sup>2</sup>  |
| 4.1 | hall           | 3,90m <sup>2</sup>  |
| 4.2 | couloir        | 6,85m <sup>2</sup>  |
| 5.1 | technique      | 3,00m <sup>2</sup>  |
| 6.2 | loggia         | 8,30m <sup>2</sup>  |

surface habitable

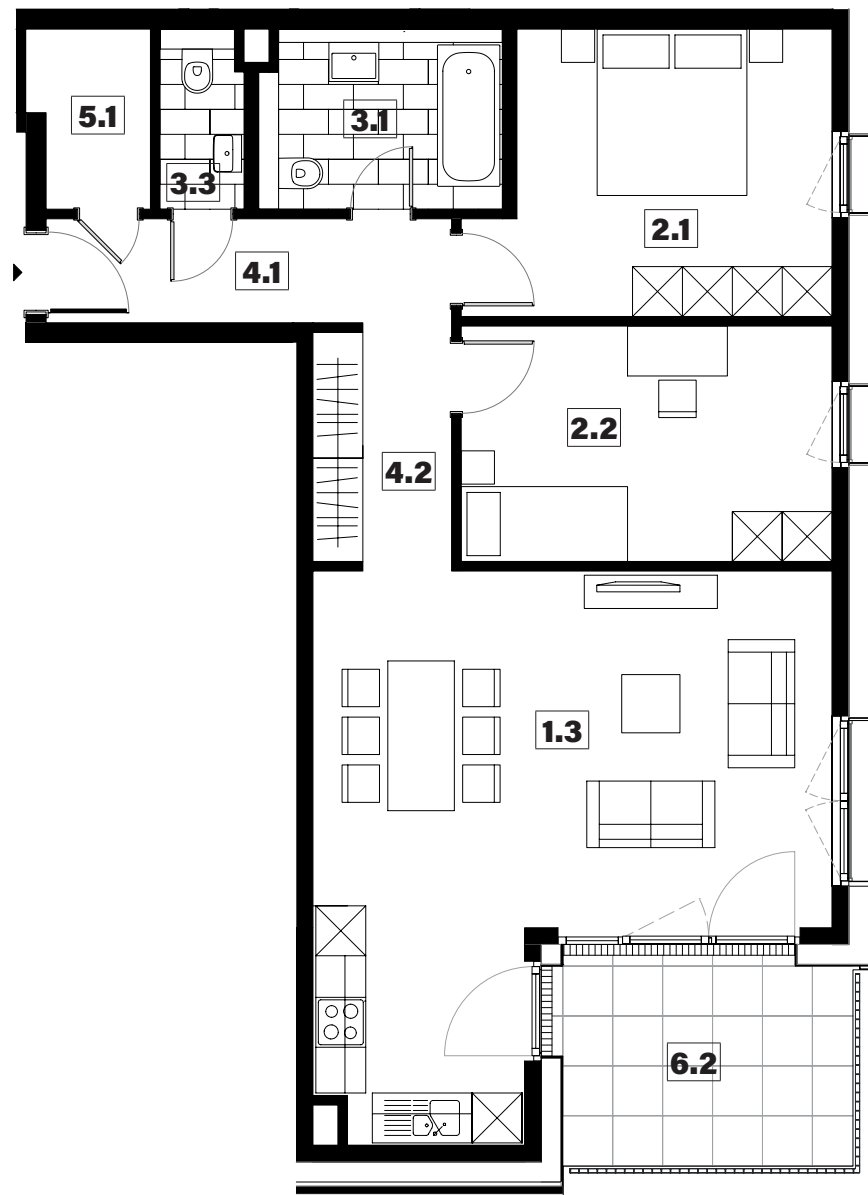
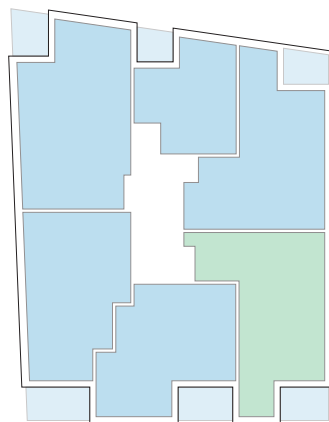
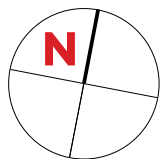
**85,05m<sup>2</sup>**





APARTEMENT TYPE

035



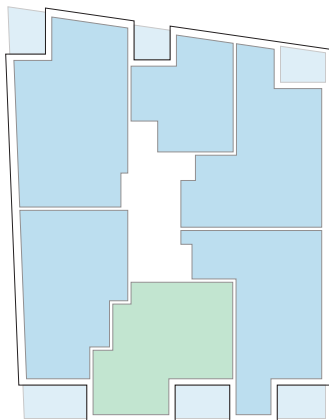
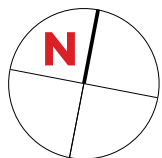
|     |                |                     |
|-----|----------------|---------------------|
| 1.3 | séjour/cuisine | 33,15m <sup>2</sup> |
| 2.1 | chambre        | 13,85m <sup>2</sup> |
| 2.2 | chambre        | 12,60m <sup>2</sup> |
| 3.1 | salle de bains | 6,20m <sup>2</sup>  |
| 3.3 | w.c.           | 2,10m <sup>2</sup>  |
| 4.1 | hall           | 4,75m <sup>2</sup>  |
| 4.2 | couloir        | 6,15m <sup>2</sup>  |
| 5.1 | technique      | 2,95m <sup>2</sup>  |
| 6.2 | loggia         | 9,05m <sup>2</sup>  |

surface habitable

**81,75m<sup>2</sup>**

APPARTEMENT TYPE

036



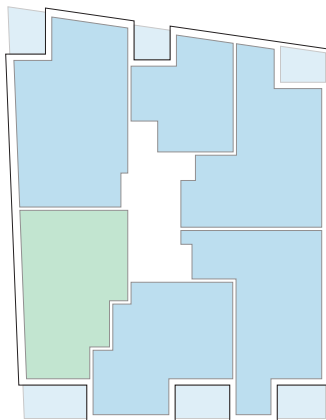
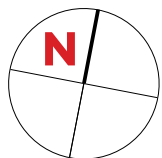
|     |                |                     |
|-----|----------------|---------------------|
| 1.3 | séjour/cuisine | 30,25m <sup>2</sup> |
| 2.1 | chambre        | 13,35m <sup>2</sup> |
| 2.2 | chambre        | 12,00m <sup>2</sup> |
| 3.1 | salle de bains | 6,10m <sup>2</sup>  |
| 3.3 | w.c.           | 2,15m <sup>2</sup>  |
| 4.1 | hall           | 2,15m <sup>2</sup>  |
| 4.2 | couloir        | 4,60m <sup>2</sup>  |
| 5.1 | technique      | 1,70m <sup>2</sup>  |
| 6.2 | loggia         | 10,10m <sup>2</sup> |

surface habitable

**72,30m<sup>2</sup>**

APPARTEMENT TYPE

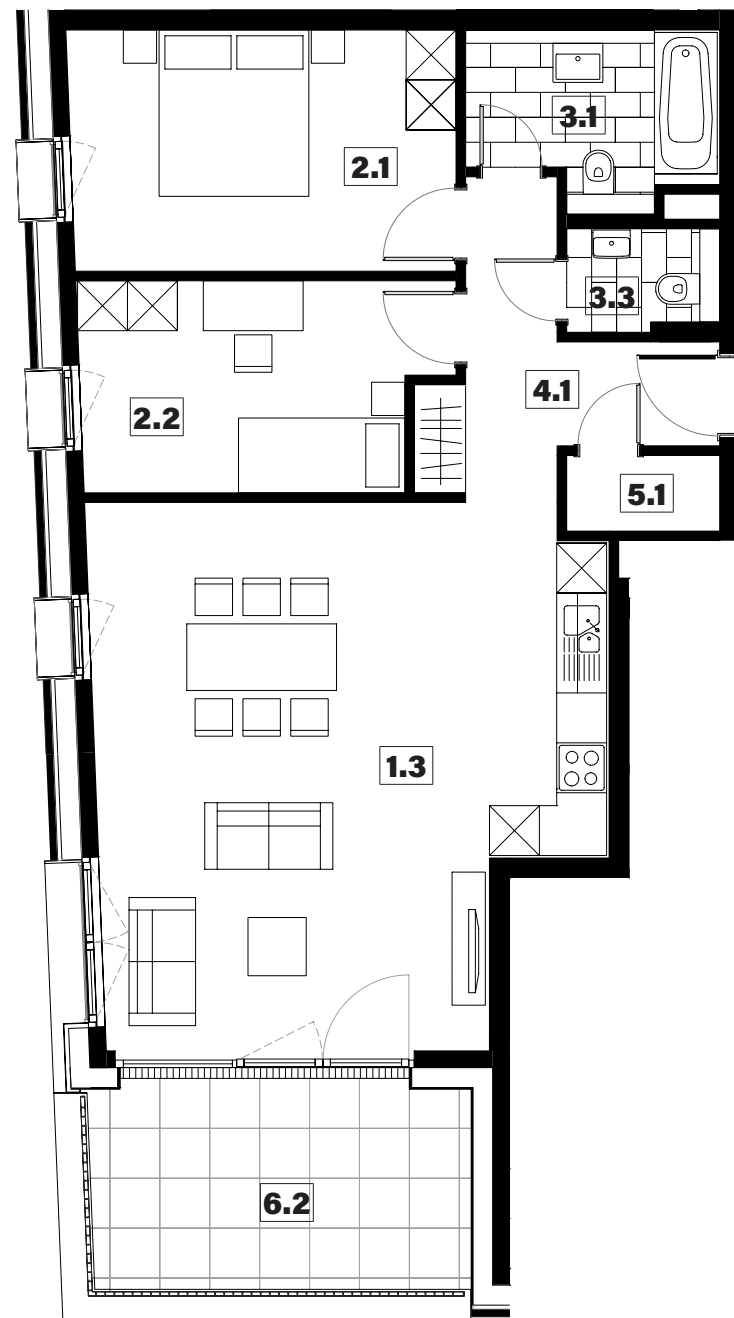
037



|     |                |                     |
|-----|----------------|---------------------|
| 1.3 | séjour/cuisine | 37,10m <sup>2</sup> |
| 2.1 | chambre        | 13,40m <sup>2</sup> |
| 2.2 | chambre        | 10,65m <sup>2</sup> |
| 3.1 | salle de bains | 5,80m <sup>2</sup>  |
| 3.3 | w.c.           | 2,15m <sup>2</sup>  |
| 4.1 | hall           | 7,55m <sup>2</sup>  |
| 5.1 | technique      | 1,65m <sup>2</sup>  |
| 6.2 | loggia         | 11,65m <sup>2</sup> |

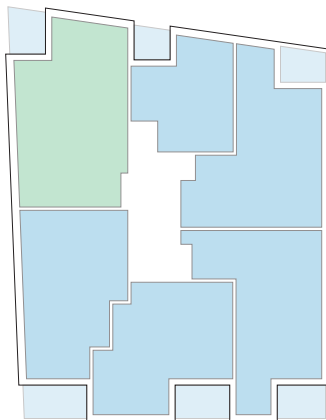
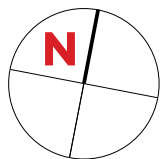
surface habitable

**78,30m<sup>2</sup>**



APPARTEMENT TYPE

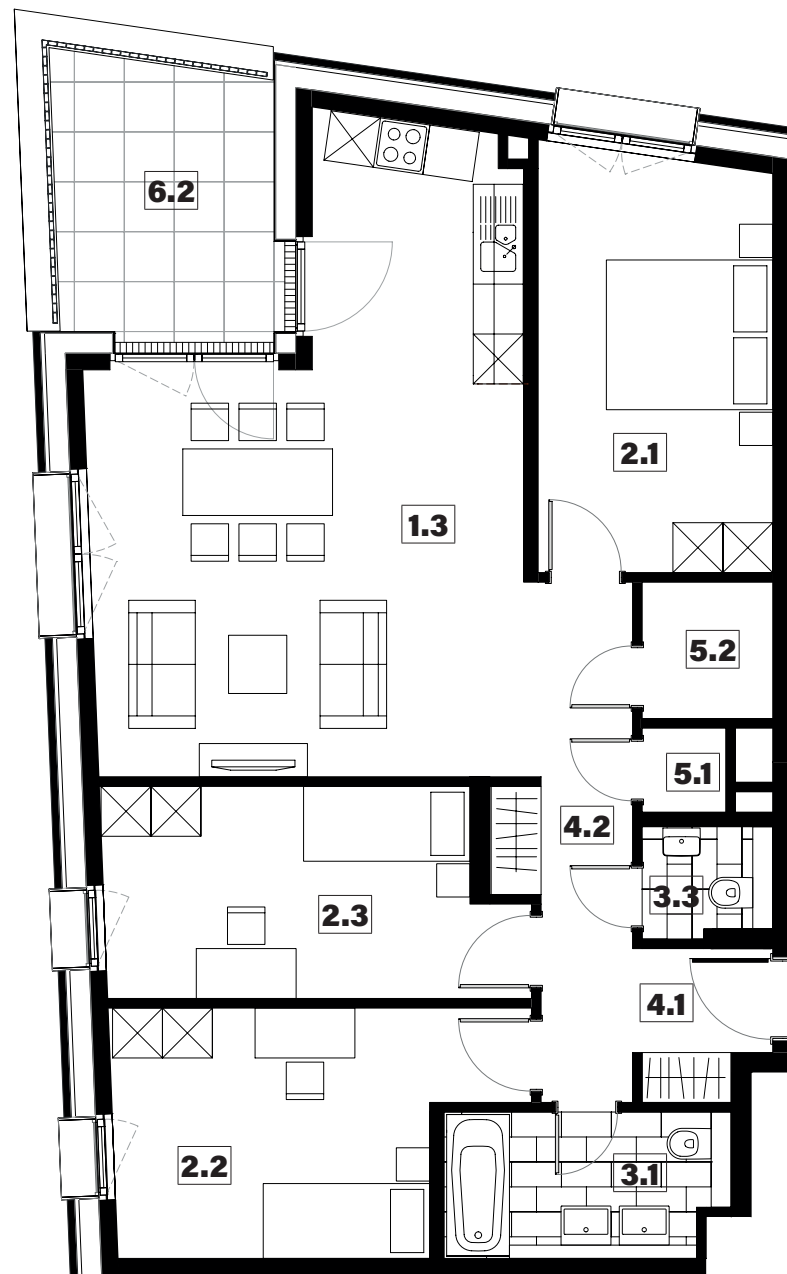
038



|     |                |                     |
|-----|----------------|---------------------|
| 1.3 | séjour/cuisine | 32,90m <sup>2</sup> |
| 2.1 | chambre        | 14,10m <sup>2</sup> |
| 2.2 | chambre        | 12,85m <sup>2</sup> |
| 2.3 | chambre        | 12,05m <sup>2</sup> |
| 3.1 | salle de bains | 5,80m <sup>2</sup>  |
| 3.3 | w.c.           | 2,00m <sup>2</sup>  |
| 4.1 | hall           | 4,75m <sup>2</sup>  |
| 4.2 | couloir        | 6,10m <sup>2</sup>  |
| 5.1 | technique      | 1,00m <sup>2</sup>  |
| 5.2 | débarras       | 2,55m <sup>2</sup>  |
| 6.2 | loggia         | 9,05m <sup>2</sup>  |

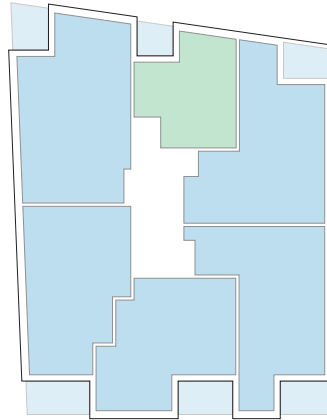
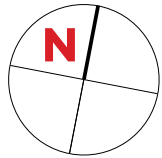
surface habitable

**94,10m<sup>2</sup>**



# APPARTEMENT TYPE

# 039



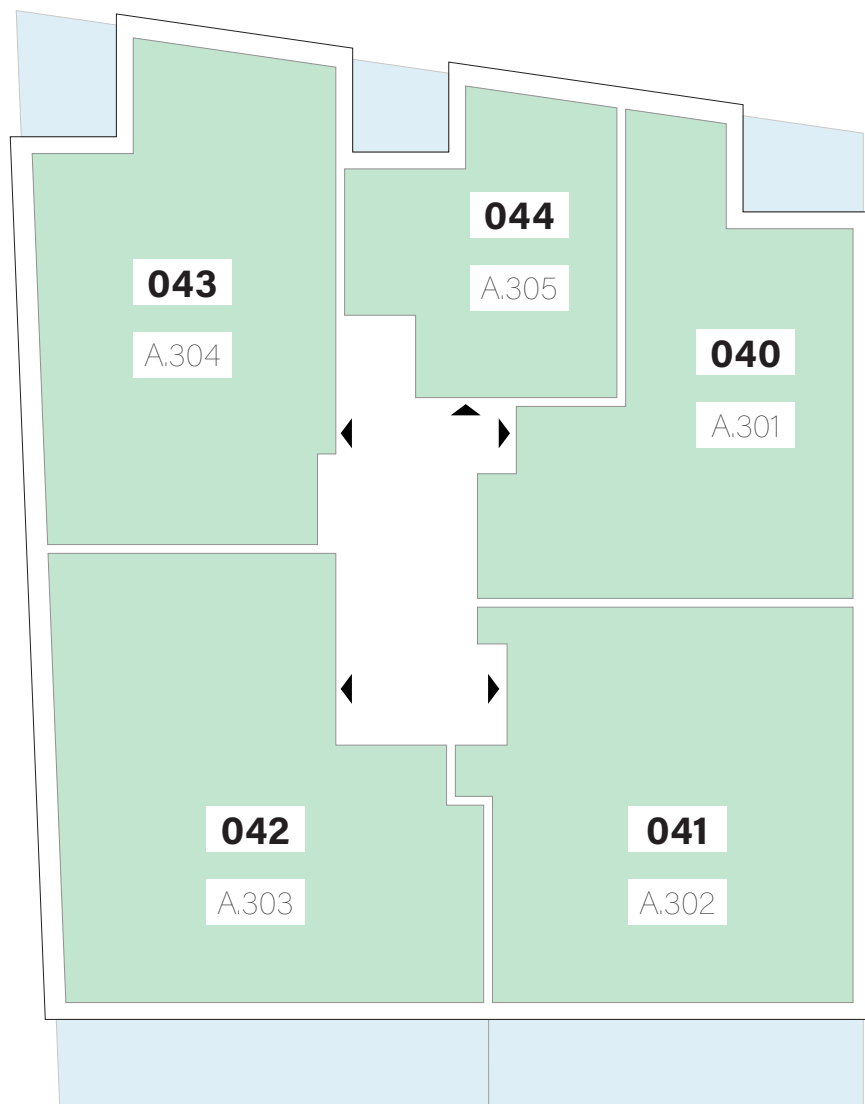
|     |                |                     |
|-----|----------------|---------------------|
| 1.3 | séjour/cuisine | 24,40m <sup>2</sup> |
| 2.1 | chambre        | 12,75m <sup>2</sup> |
| 3.1 | salle de bains | 5,75m <sup>2</sup>  |
| 4.1 | hall           | 3,45m <sup>2</sup>  |
| 5.1 | technique      | 1,40m <sup>2</sup>  |
| 6.2 | loggia         | 6,65m <sup>2</sup>  |

surface habitable

**47,75m<sup>2</sup>**

# APPARTEMENTS

## 3<sup>ème</sup> ÉTAGE

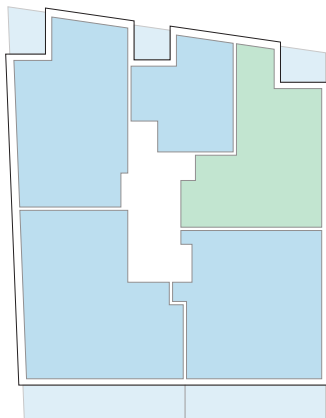
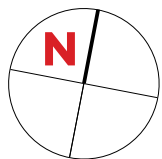


| Type       | Surface Utile        | surface terrasse    |
|------------|----------------------|---------------------|
| <b>040</b> | 88,45m <sup>2</sup>  | 8,30m <sup>2</sup>  |
| <b>041</b> | 106,16m <sup>2</sup> | 25,60m <sup>2</sup> |
| <b>042</b> | 119,18m <sup>2</sup> | 29,35m <sup>2</sup> |
| <b>043</b> | 99,42m <sup>2</sup>  | 9,05m <sup>2</sup>  |
| <b>044</b> | 49,05m <sup>2</sup>  | 6,65m <sup>2</sup>  |

- les surfaces inscrites dans ce tableau peuvent subir de légères modifications dues aux nécessités techniques de la construction.
- surface utile = surface calculée à l'intérieur des murs extérieurs.

APPARTEMENT TYPE

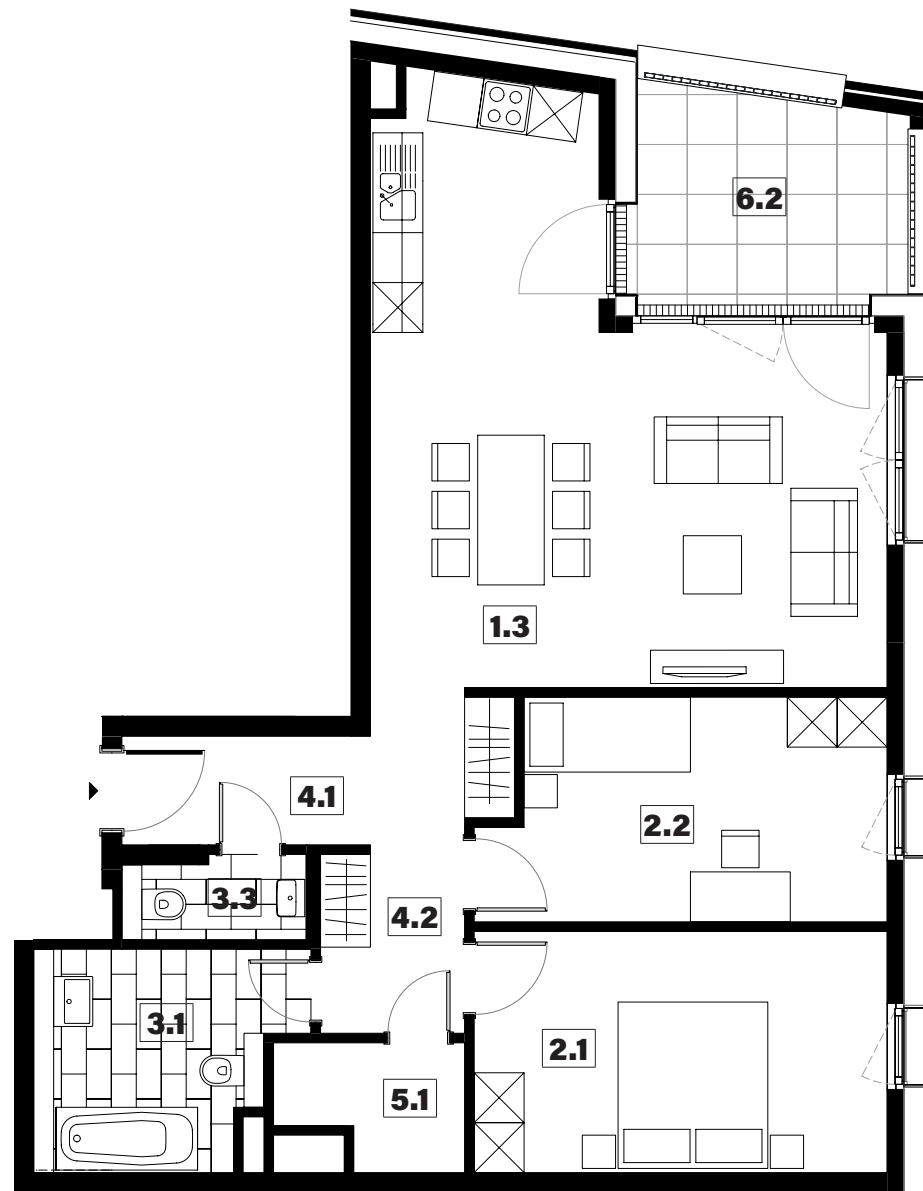
040



|     |                |                     |
|-----|----------------|---------------------|
| 1.3 | séjour/cuisine | 34,65m <sup>2</sup> |
| 2.1 | chambre        | 14,40m <sup>2</sup> |
| 2.2 | chambre        | 12,45m <sup>2</sup> |
| 3.1 | salle de bains | 7,70m <sup>2</sup>  |
| 3.3 | w.c.           | 2,10m <sup>2</sup>  |
| 4.1 | hall           | 3,90m <sup>2</sup>  |
| 4.2 | couloir        | 6,85m <sup>2</sup>  |
| 5.1 | technique      | 3,00m <sup>2</sup>  |
| 6.2 | loggia         | 8,30m <sup>2</sup>  |

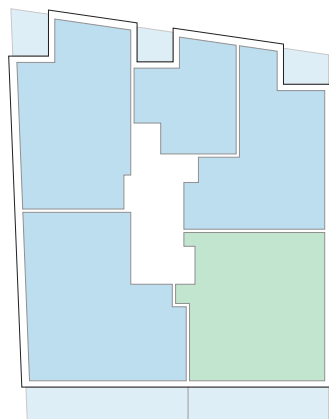
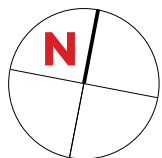
surface habitable

**85,05m<sup>2</sup>**



APPARTEMENT TYPE

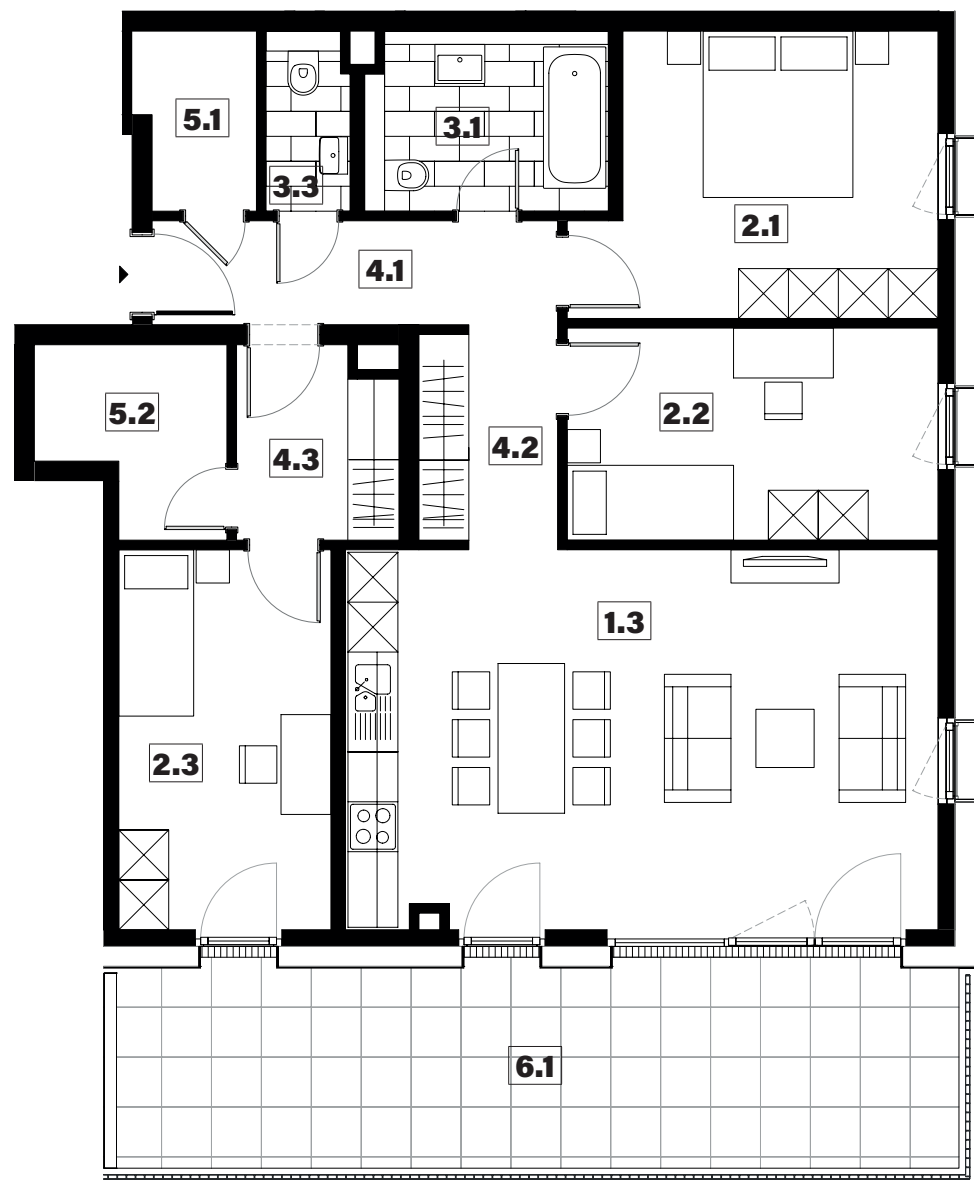
041



|     |                |                     |
|-----|----------------|---------------------|
| 1.3 | séjour/cuisine | 32,40m <sup>2</sup> |
| 2.1 | chambre        | 13,85m <sup>2</sup> |
| 2.2 | chambre        | 11,37m <sup>2</sup> |
| 2.3 | chambre        | 11,65m <sup>2</sup> |
| 3.1 | salle de bains | 6,20m <sup>2</sup>  |
| 3.3 | w.c.           | 2,10m <sup>2</sup>  |
| 4.1 | hall           | 4,75m <sup>2</sup>  |
| 4.2 | couloir        | 5,70m <sup>2</sup>  |
| 4.3 | couloir        | 4,30m <sup>2</sup>  |
| 5.1 | technique      | 2,95m <sup>2</sup>  |
| 5.2 | débarras       | 4,45m <sup>2</sup>  |
| 6.1 | terrasse       | 25,60m <sup>2</sup> |

surface habitable

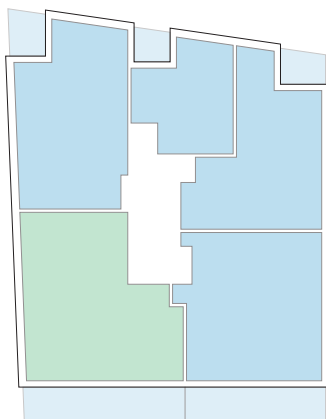
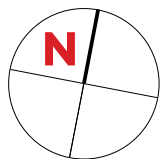
**99,72m<sup>2</sup>**





APPARTEMENT TYPE

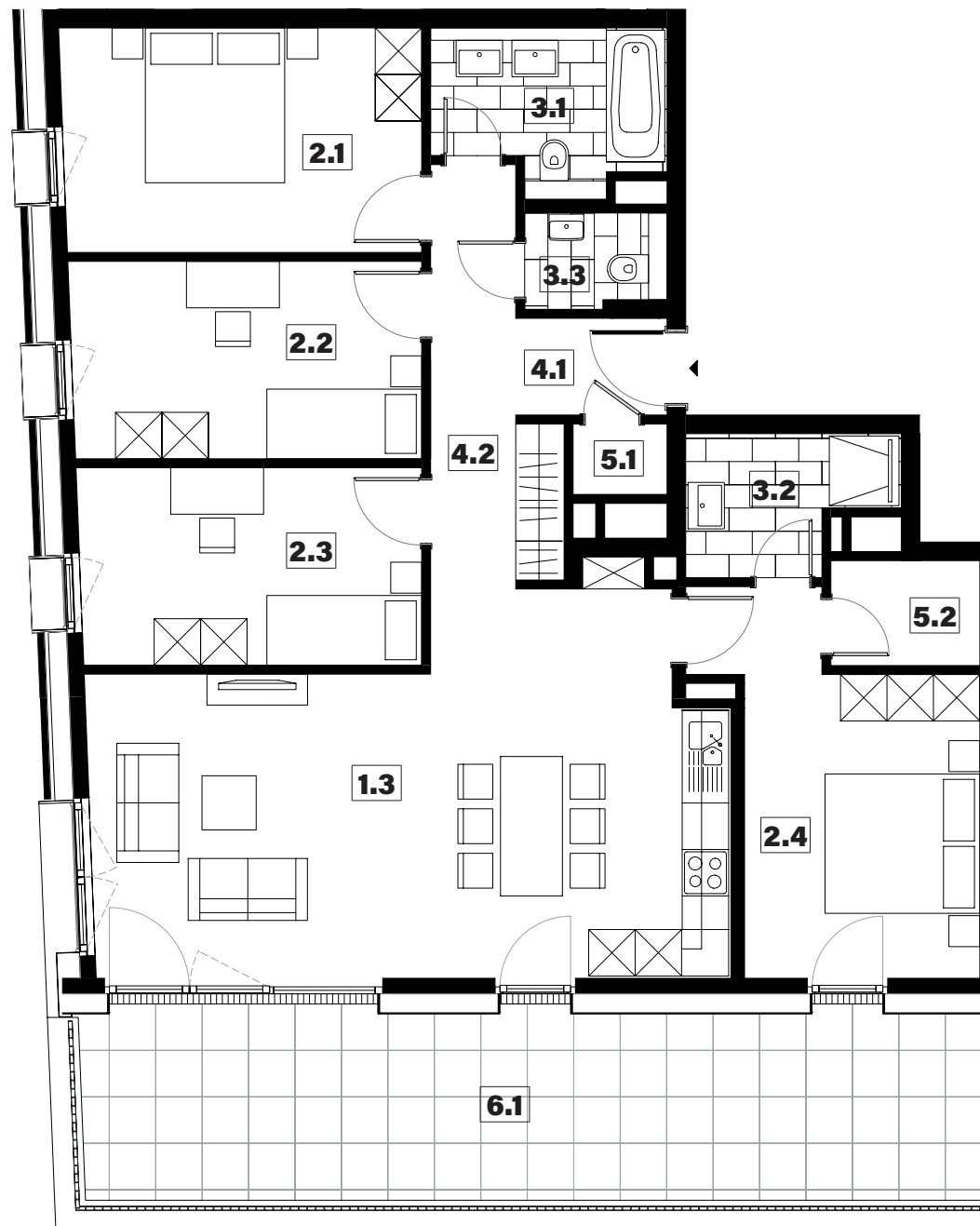
042



|     |                 |                     |
|-----|-----------------|---------------------|
| 1.3 | séjour/cuisine  | 32,20m <sup>2</sup> |
| 2.1 | chambre         | 13,40m <sup>2</sup> |
| 2.2 | chambre         | 11,50m <sup>2</sup> |
| 2.3 | chambre         | 11,25m <sup>2</sup> |
| 2.4 | chambre         | 13,90m <sup>2</sup> |
| 3.1 | salle de bains  | 5,80m <sup>2</sup>  |
| 3.2 | salle de douche | 4,26m <sup>2</sup>  |
| 3.3 | w.c.            | 2,10m <sup>2</sup>  |
| 4.1 | hall            | 2,40m <sup>2</sup>  |
| 4.2 | couloir         | 11,05m <sup>2</sup> |
| 5.1 | technique       | 1,10m <sup>2</sup>  |
| 5.2 | débarras        | 2,60m <sup>2</sup>  |
| 6.1 | terrasse        | 29,35m <sup>2</sup> |

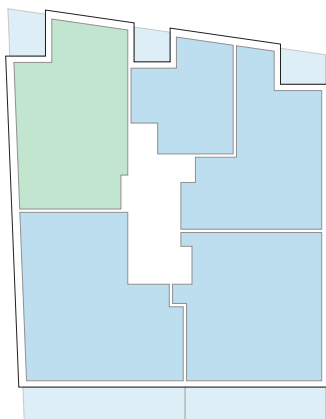
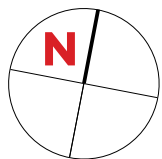
surface habitable

**111,56m<sup>2</sup>**



APPARTEMENT TYPE

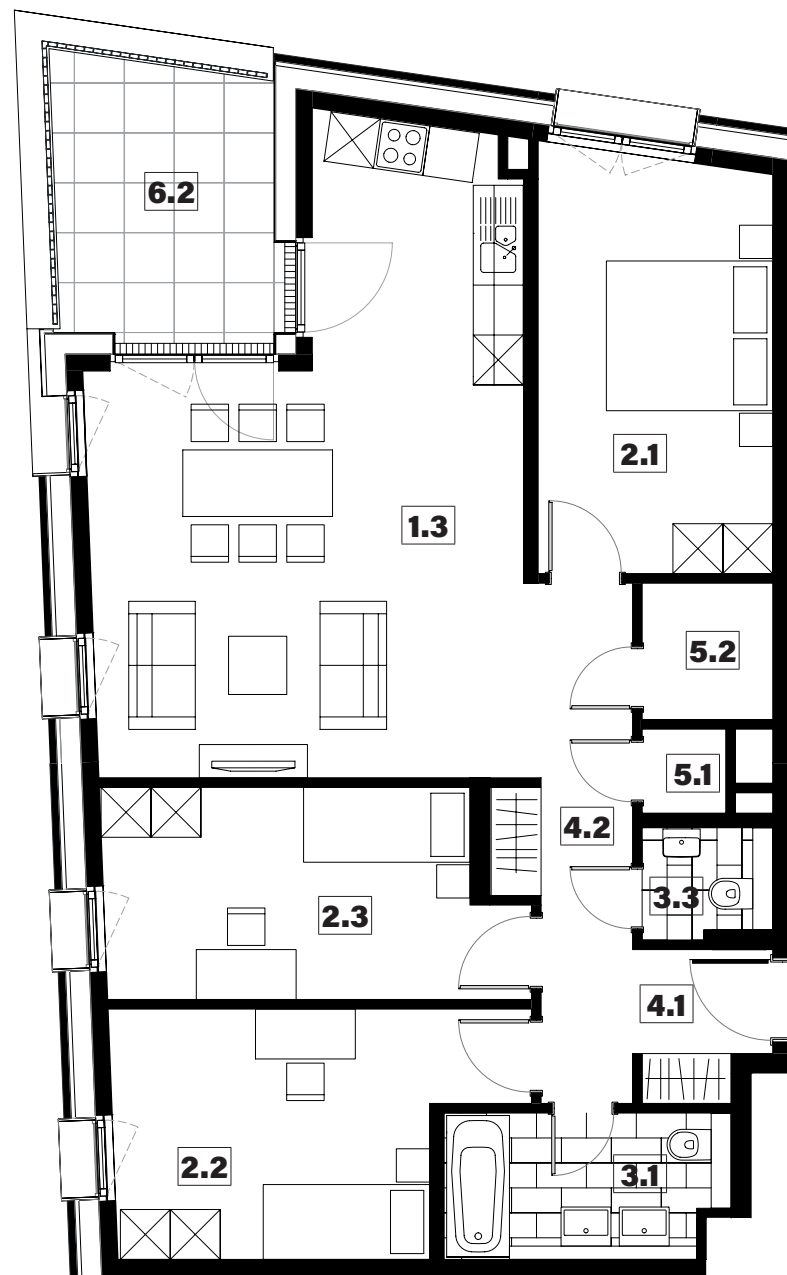
043



|     |                |                     |
|-----|----------------|---------------------|
| 1.3 | séjour/cuisine | 32,85m <sup>2</sup> |
| 2.1 | chambre        | 14,10m <sup>2</sup> |
| 2.2 | chambre        | 12,85m <sup>2</sup> |
| 2.3 | chambre        | 12,05m <sup>2</sup> |
| 3.1 | salle de bains | 5,80m <sup>2</sup>  |
| 3.3 | w.c.           | 2,00m <sup>2</sup>  |
| 4.1 | hall           | 4,75m <sup>2</sup>  |
| 4.2 | couloir        | 6,10m <sup>2</sup>  |
| 5.1 | technique      | 1,00m <sup>2</sup>  |
| 5.2 | débarras       | 2,55m <sup>2</sup>  |
| 6.2 | loggia         | 9,05m <sup>2</sup>  |

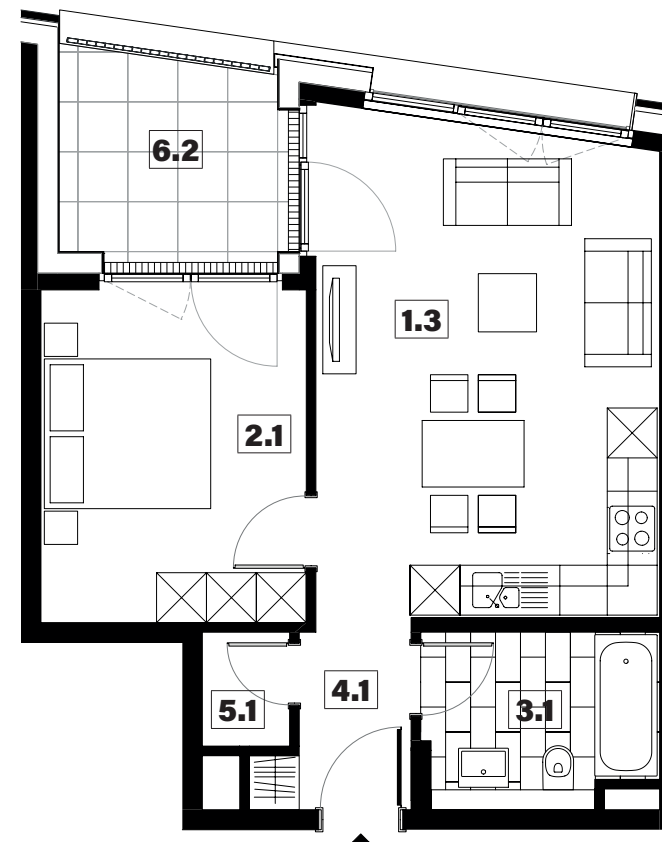
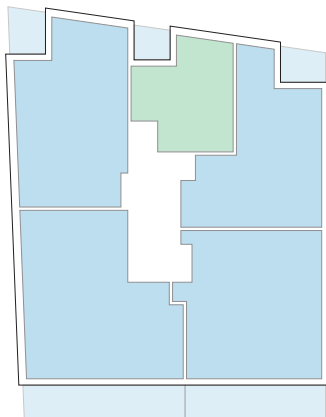
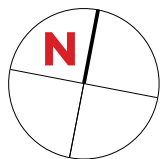
surface habitable

**94,05m<sup>2</sup>**



# APPARTEMENT TYPE

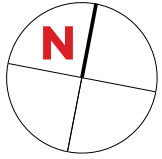
# 044



|     |                |                     |
|-----|----------------|---------------------|
| 1.3 | séjour/cuisine | 24,40m <sup>2</sup> |
| 2.1 | chambre        | 12,75m <sup>2</sup> |
| 3.1 | salle de bains | 5,75m <sup>2</sup>  |
| 4.1 | hall           | 3,45m <sup>2</sup>  |
| 5.1 | technique      | 1,40m <sup>2</sup>  |
| 6.2 | loggia         | 6,65m <sup>2</sup>  |

surface habitable

**47,75m<sup>2</sup>**



# PLAN DE SITUATION

