



SNHBM

Société Nationale
des Habitations à Bon Marché S.A.

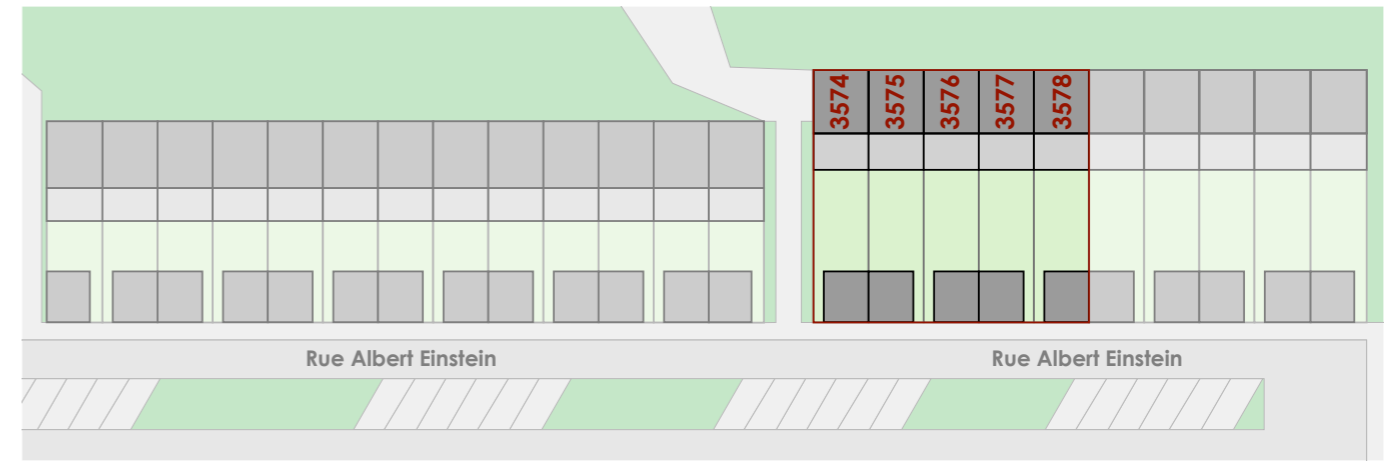
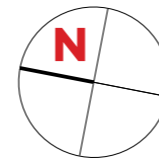
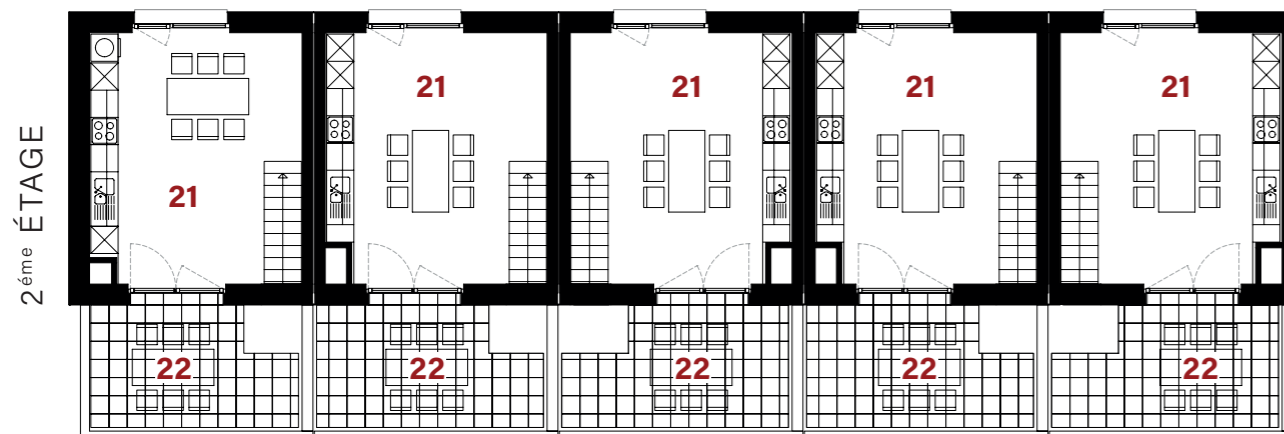
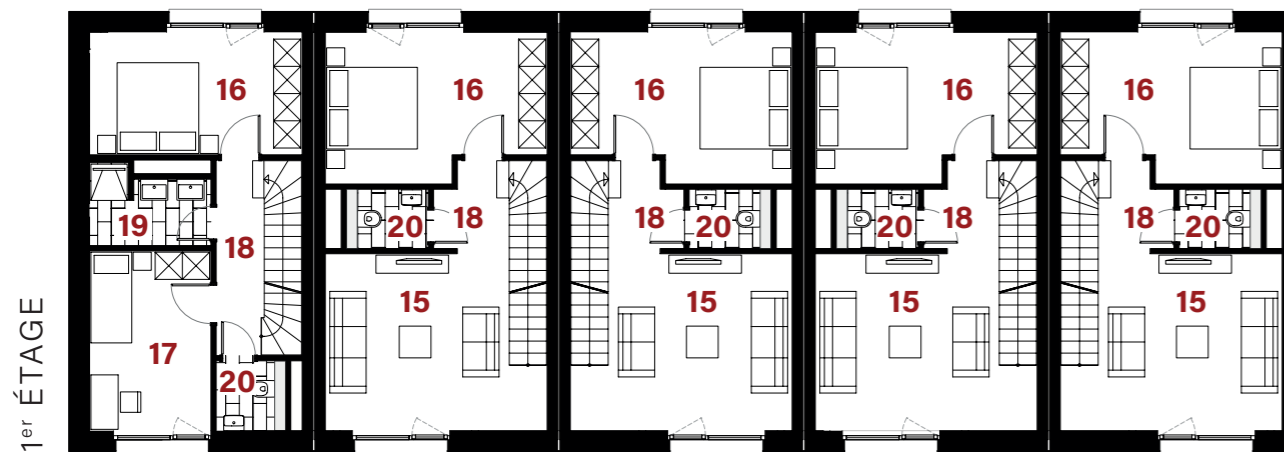
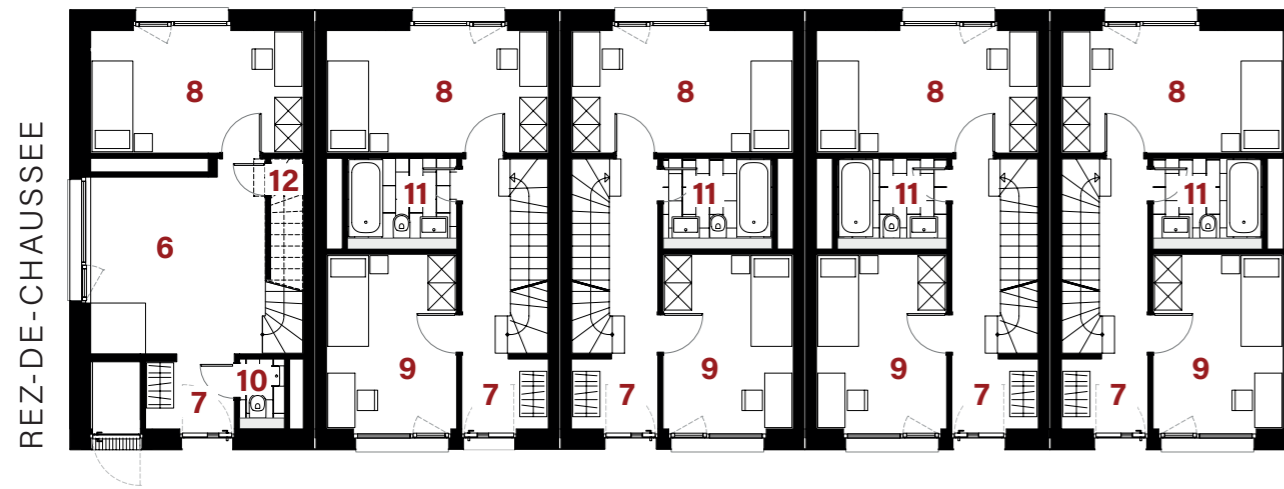
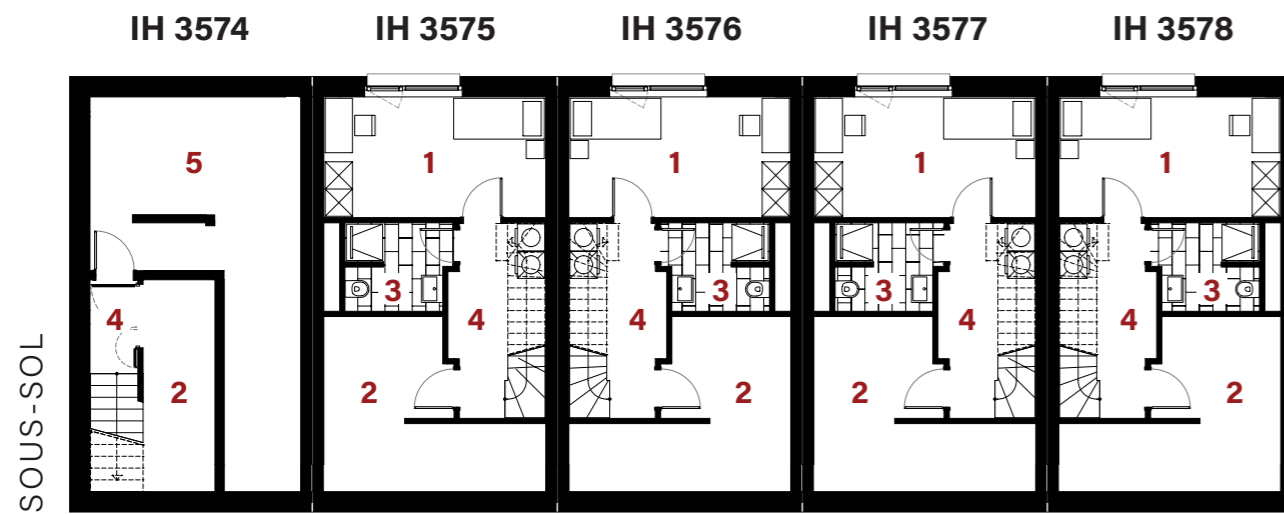
Tel.: +352 44 82 92 - 1

E-mail: info@snhbm.lu

 snhbm.lu

Image non contractuelle

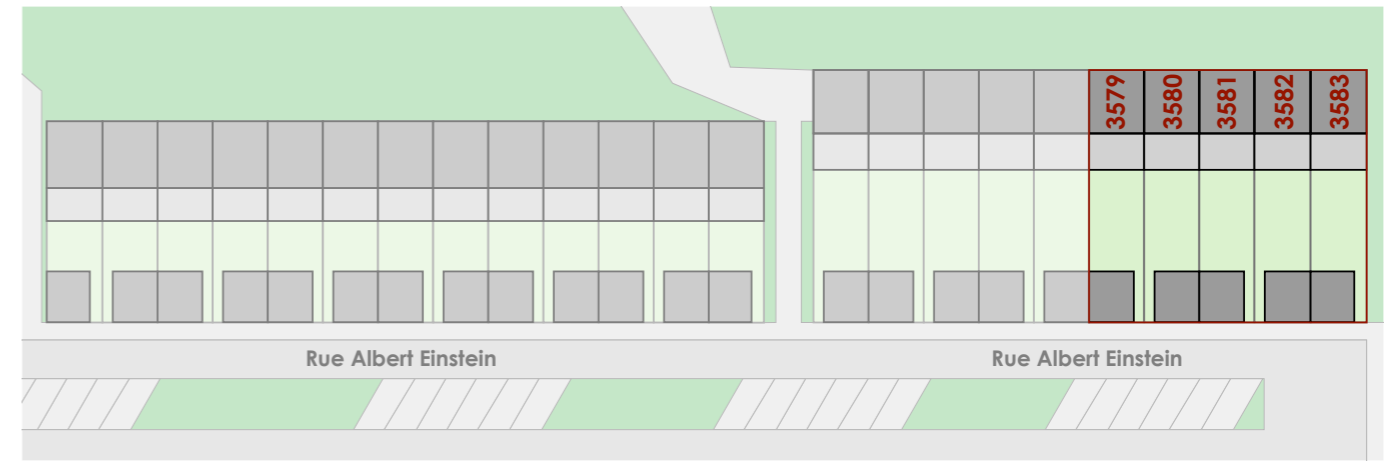
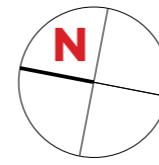
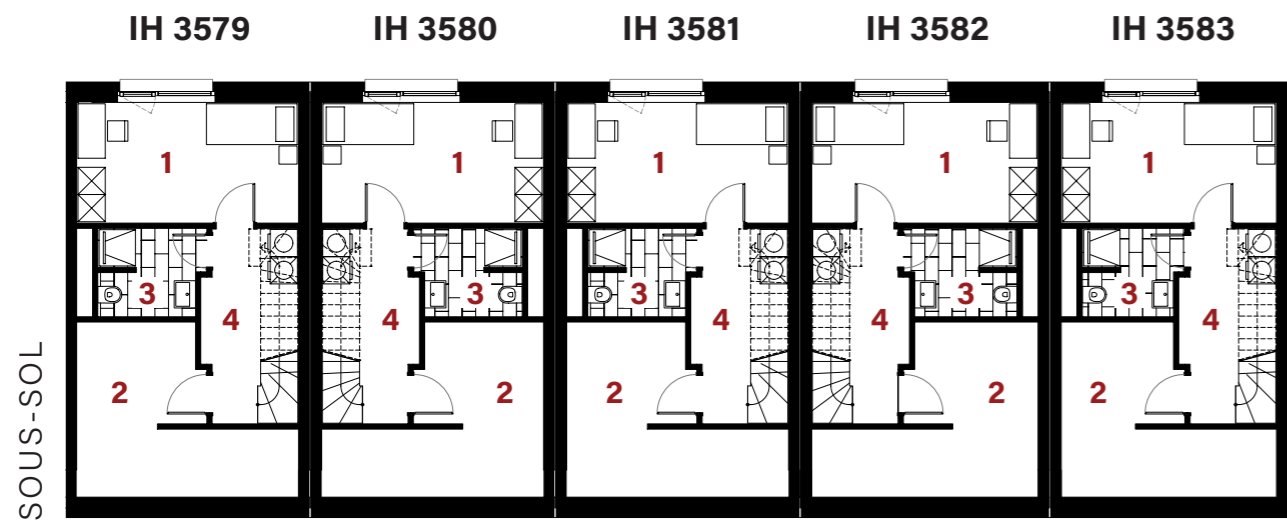
ESCH-SUR-ALZETTE
Nonnewisen
Maisons - IH3574-3583



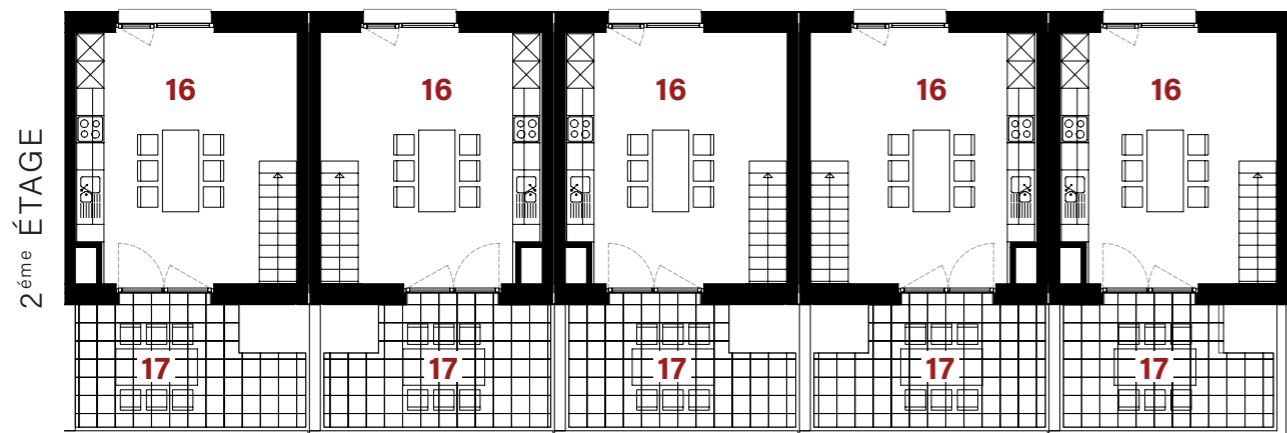
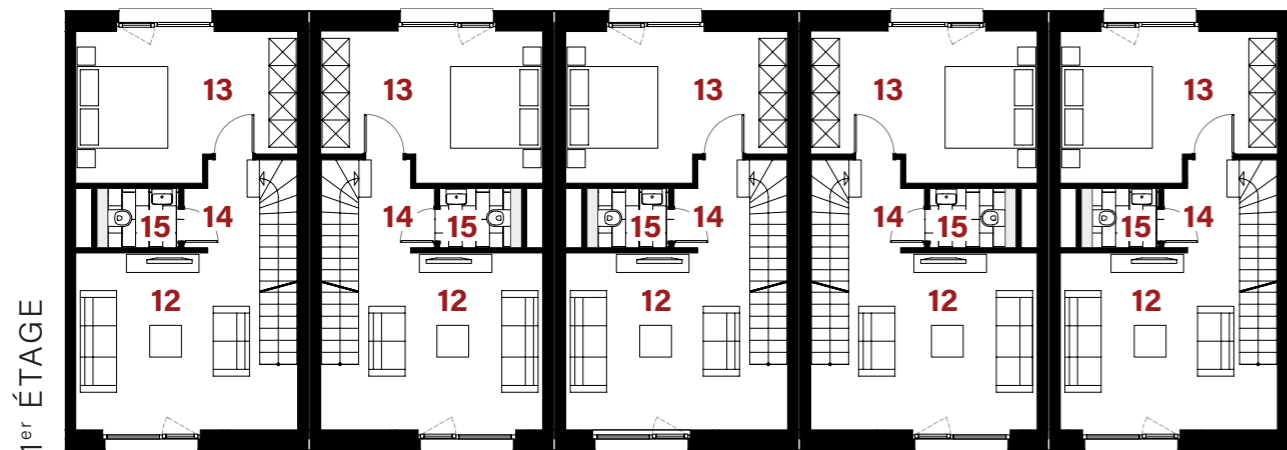
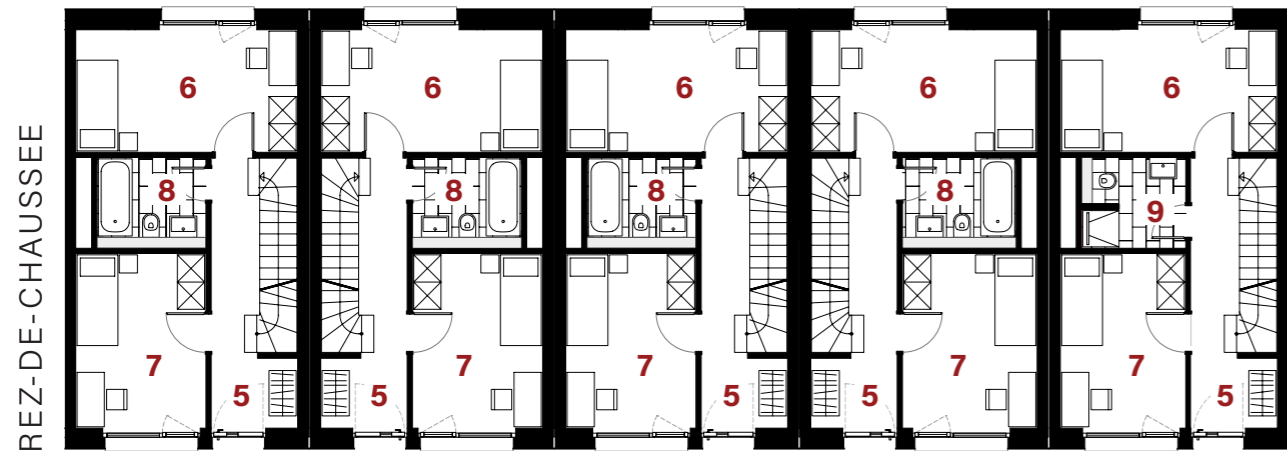
PLAN DE SITUATION

		IH 3574	IH3575	IH3576	IH3577	IH3578
Surface du terrain		1,33a	1,33a	1,33a	1,33a	1,33a
Surface utile d'habitation		100,22m ²	135,42m ²	135,42m ²	135,42m ²	135,42m ²
SOUS-SOL	1 chambre	-	12,10m ²	12,10m ²	12,10m ²	12,10m ²
	2 technique	9,90m ²	13,70m ²	13,70m ²	13,70m ²	13,70m ²
	3 salle de douche	-	4,35m ²	4,35m ²	4,35m ²	4,35m ²
	4 couloir	2,20m ²	5,85m ²	5,85m ²	5,85m ²	5,85m ²
	5 cave	25,70m ²	-	-	-	-
REZ-DE-CHAUSSEE	6 séjour	14,00m ²	-	-	-	-
	7 hall	3,10m ²	7,20m ²	7,20m ²	7,20m ²	7,20m ²
	8 chambre	12,65m ²	13,20m ²	13,20m ²	13,20m ²	13,20m ²
	9 chambre	-	11,05m ²	11,05m ²	11,05m ²	11,05m ²
	10 w.c.	1,30m ²	-	-	-	-
	11 salle de bains	-	4,20m ²	4,20m ²	4,20m ²	4,20m ²
	12 débarras	1,35m ²	-	-	-	-
	13 poubelles	4,45m ²	4,45m ²	4,45m ²	4,45m ²	4,45m ²
	14 carport	16,15m ²	16,15m ²	16,15m ²	16,15m ²	16,15m ²
	15 séjour	-	17,00m ²	17,00m ²	17,00m ²	17,00m ²
1 ^{er} ÉTAGE	16 chambre	12,65m ²	15,00m ²	15,00m ²	15,00m ²	15,00m ²
	17 chambre	10,60m ²	-	-	-	-
	18 hall	4,10m ²	2,60m ²	2,60m ²	2,60m ²	2,60m ²
	19 salle de douche	4,20m ²	-	-	-	-
	20 w.c.	2,00m ²	2,05m ²	2,05m ²	2,05m ²	2,05m ²
2 ^{ème} ET.	21 cuisine / salle à mang.	22,70m ²	24,10m ²	24,10m ²	24,10m ²	24,10m ²
	22 terrasse	11,45m ²	12,75m ²	11,95m ²	12,20m ²	11,95m ²

- les surfaces inscrites dans ce tableau peuvent subir de légères modifications dues aux nécessités techniques de la construction.
- surface utile = surface calculée à l'intérieur des murs extérieurs.



PLAN DE SITUATION



	IH 3579	IH3580	IH3581	IH3582	IH3583	
Surface du terrain	1,33a	1,33a	1,33a	1,36a	1,36a	
Surface utile d'habitation	135,42m ²	135,42m ²	135,42m ²	138,27m ²	132,39m ²	
SOUS-SOL	1 chambre	12,10m ²	12,10m ²	12,10m ²	12,35m ²	11,70m ²
	2 technique	13,70m ²	13,70m ²	13,70m ²	14,10m ²	13,15m ²
	3 salle de douche	4,35m ²	4,35m ²	4,35m ²	4,55m ²	4,05m ²
	4 couloir	5,85m ²	5,85m ²	5,85m ²	5,85m ²	5,85m ²
	5 hall	7,20m ²	7,20m ²	7,20m ²	7,20m ²	7,10m ²
REZ-DE-CHAUSSEE	6 chambre	13,20m ²	13,20m ²	13,20m ²	13,45m ²	12,90m ²
	7 chambre	11,05m ²	11,05m ²	11,05m ²	11,45m ²	10,65m ²
	8 salle de bains	4,20m ²	4,20m ²	4,20m ²	4,40m ²	-
	9 salle de douche	-	-	-	-	4,25m ²
	10 poubelles	4,45m ²	4,45m ²	4,45m ²	4,45m ²	4,00m ²
1 ^{er} ÉTAGE	11 carport	16,15m ²	16,15m ²	16,15m ²	16,65m ²	16,15m ²
	12 séjour	17,00m ²	17,00m ²	17,00m ²	17,40m ²	16,60m ²
	13 chambre	15,00m ²	15,00m ²	15,00m ²	15,30m ²	14,65m ²
	14 hall	2,60m ²	2,60m ²	2,60m ²	2,60m ²	2,60m ²
	15 w.c.	2,05m ²	2,05m ²	2,05m ²	2,20m ²	1,90m ²
2 ^{ème} ET.	16 cuisine / salle à mang.	24,10m ²	24,10m ²	24,10m ²	24,65m ²	23,50m ²
	17 terrasse	11,95m ²	12,20m ²	11,95m ²	13,00m ²	11,75m ²

- les surfaces inscrites dans ce tableau peuvent subir de légères modifications dues aux nécessités techniques de la construction.
- surface utile = surface calculée à l'intérieur des murs extérieurs.