

Résidence CORNUS



image non contractuelle

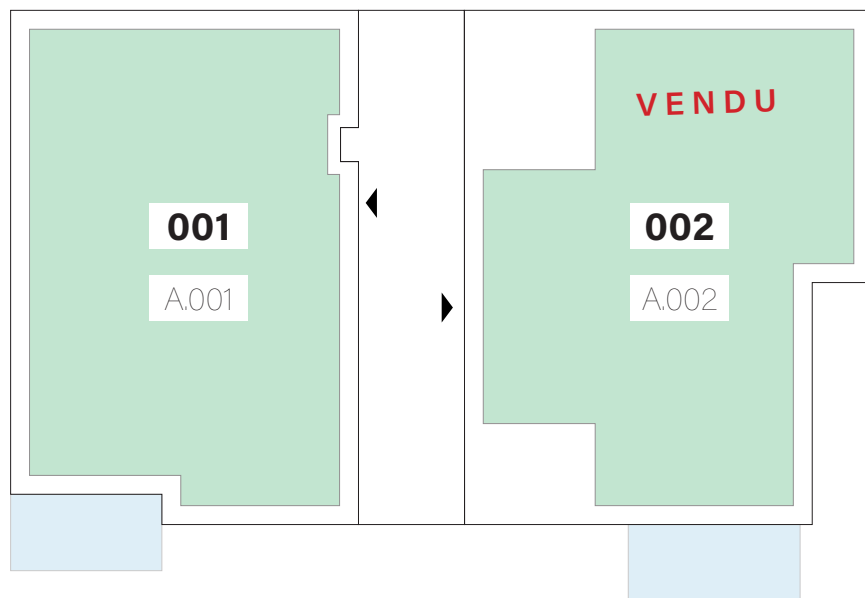
APPARTEMENTS

REZ-DE-CHAUSSÉE

Type	Surface Utile	surface terrasse
001	89,43m ²	8,00m ²
002	87,53m ²	8,95m ²

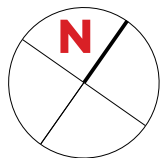
VENDU

- les surfaces inscrites dans ce tableau peuvent subir de légères modifications dues aux nécessités techniques de la construction.
- surface utile = surface calculée à l'intérieur des murs extérieurs.



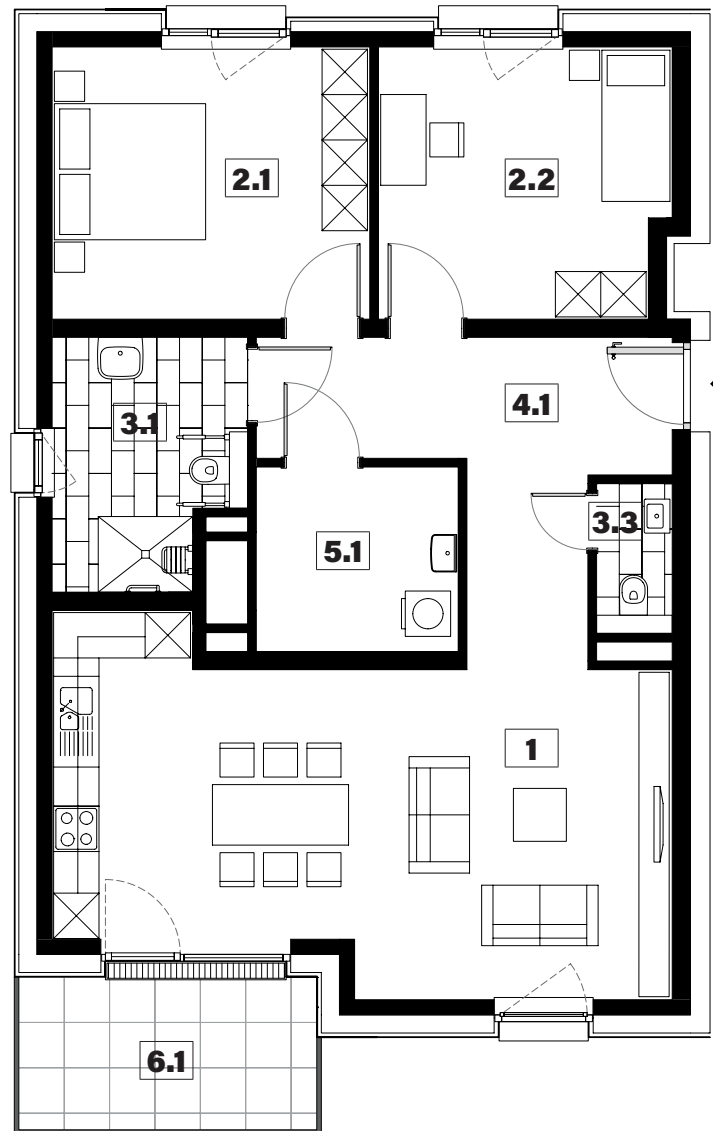
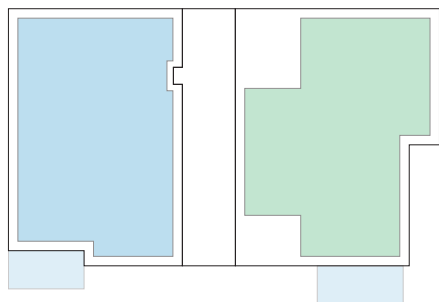
APPARTEMENT TYPE

001



1	séjour/cuisine	34,05m ²
2.1	chambre	15,10m ²
2.2	chambre	13,55m ²
3.1	salle de bains	7,90m ²
3.3	w.c.	1,75m ²
4.1	hall	13,50m ²
5.1	technique	6,50m ²
6.1	terrasse	8,00m ²

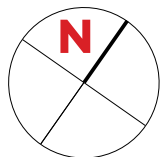
surface habitable
92,35m²



VENDU

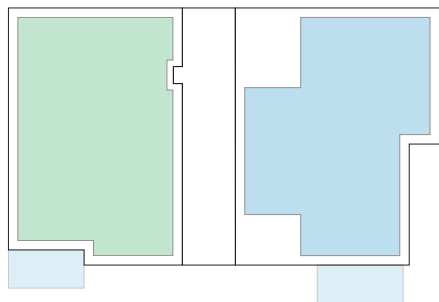
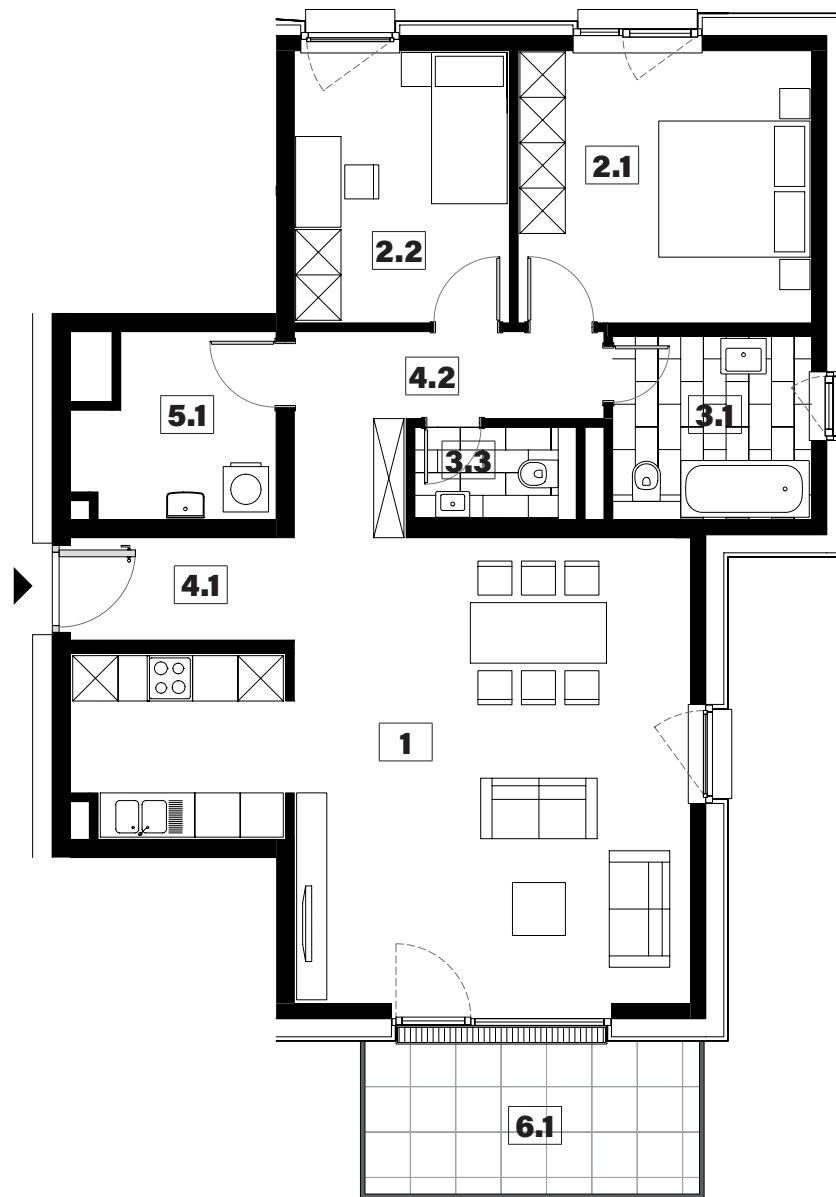
APPARTEMENT TYPE

002



1	séjour/cuisine	39,20m ²
2.1	chambre	13,95m ²
2.2	chambre	10,25m ²
3.1	salle de bains	6,40m ²
3.3	w.c.	2,25m ²
4.1	hall	4,00m ²
4.2	couloir	7,05m ²
5.1	technique	5,95m ²
6.1	terrasse	8,95m ²

surface habitable
89,05m²



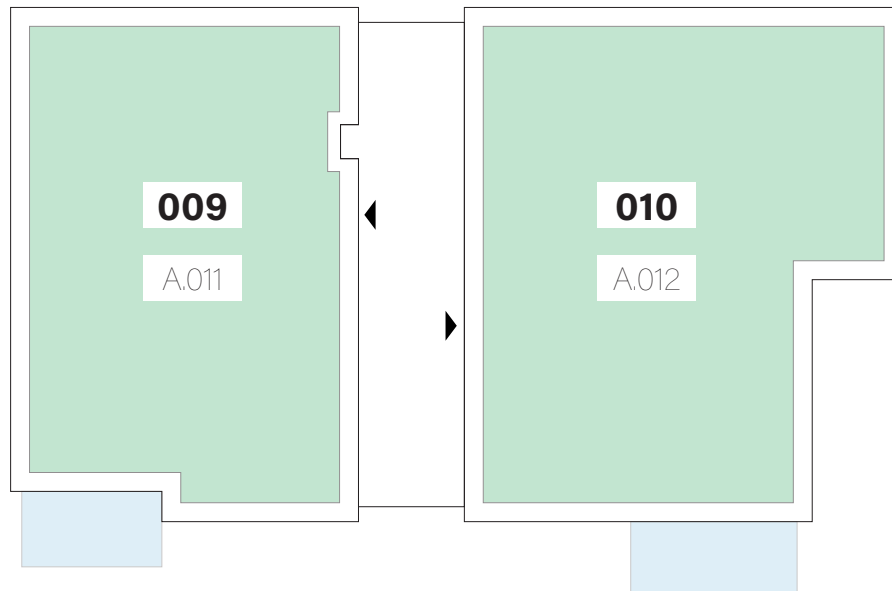
APPARTEMENTS

1^{er} ÉTAGE

Type	Surface Utile	surface balcon
009	89,09m ²	7,45m ²
010	109,53m ²	8,55m ²

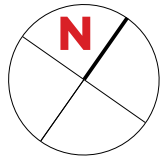
VENDU

- les surfaces inscrites dans ce tableau peuvent subir de légères modifications dues aux nécessités techniques de la construction.
- surface utile = surface calculée à l'intérieur des murs extérieurs.



APPARTEMENT TYPE

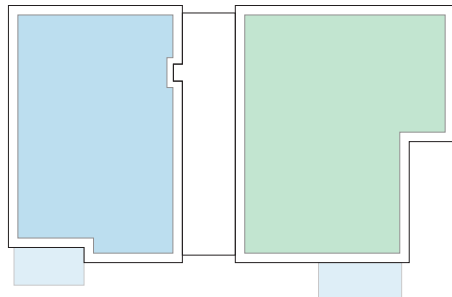
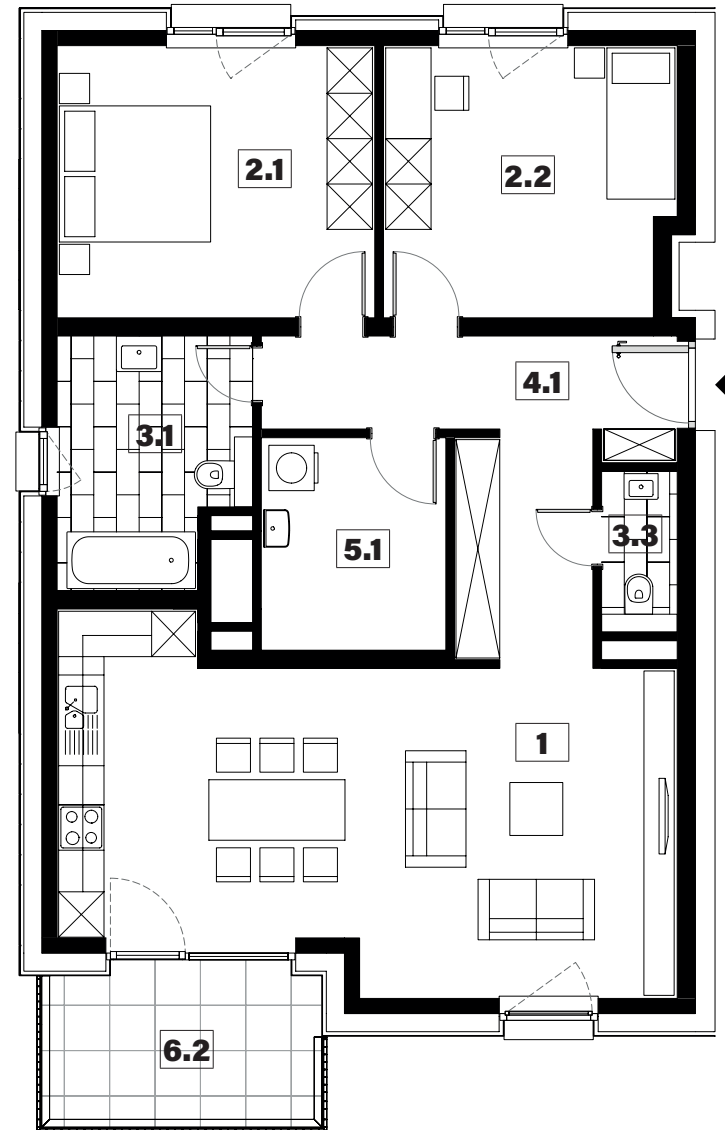
009



1	séjour/cuisine	34,05m ²
2.1	chambre	15,10m ²
2.2	chambre	13,55m ²
3.1	salle de bains	7,70m ²
3.3	w.c.	1,90m ²
4.1	hall	12,85m ²
5.1	technique	6,85m ²
6.2	balcon	7,45m ²

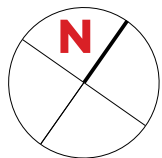
surface habitable

92,00m²



APARTEMENT TYPE

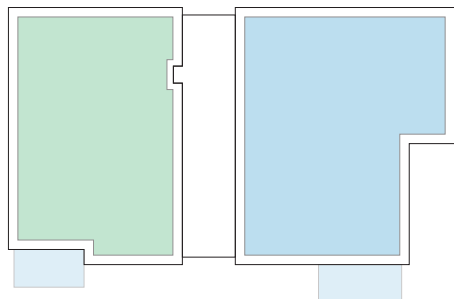
010



1	séjour/cuisine	39,40m ²
2.1	chambre	14,75m ²
2.2	chambre	10,90m ²
2.3	chambre	10,10m ²
3.1	salle de bains	7,55m ²
3.3	w.c.	2,30m ²
4.1	hall	5,25m ²
4.2	couloir	8,90m ²
5.1	technique	6,25m ²
5.2	débarras	4,60m ²
6.2	balcon	8,55m ²

surface habitable

110,00m²



APPARTEMENTS

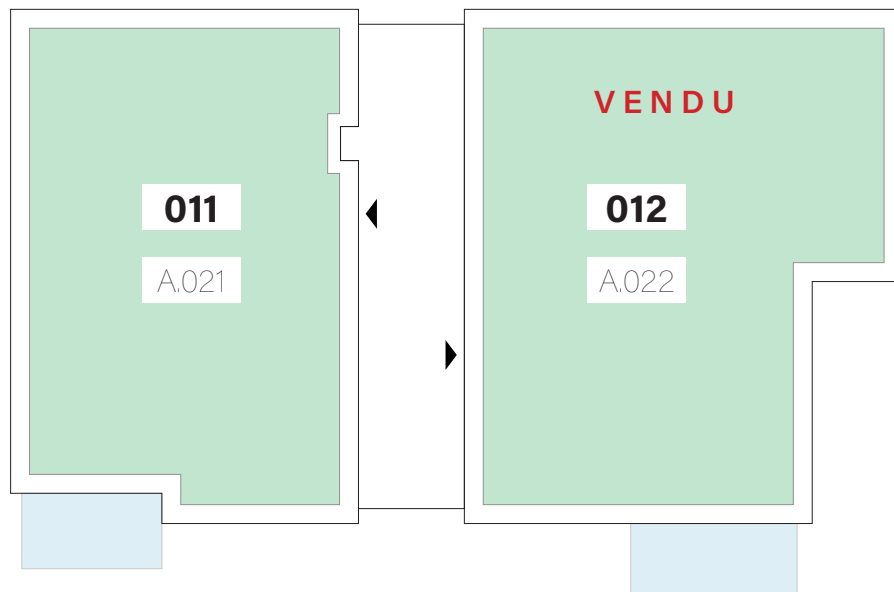
2^{ème} ÉTAGE

Type	Surface Utile	surface balcon
011	89,09m ²	7,45m ²
012	109,53m ²	8,55m ²

VENDU

VENDU

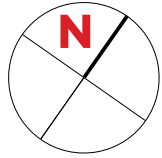
- les surfaces inscrites dans ce tableau peuvent subir de légères modifications dues aux nécessités techniques de la construction.
- surface utile = surface calculée à l'intérieur des murs extérieurs.



VENDU

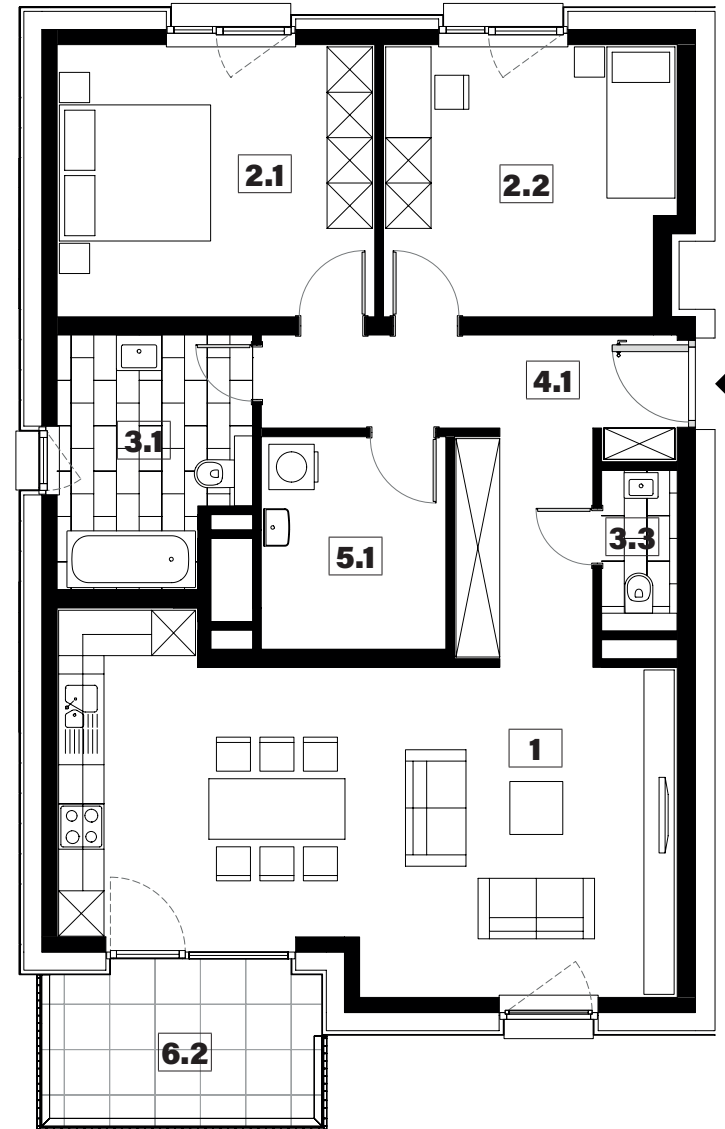
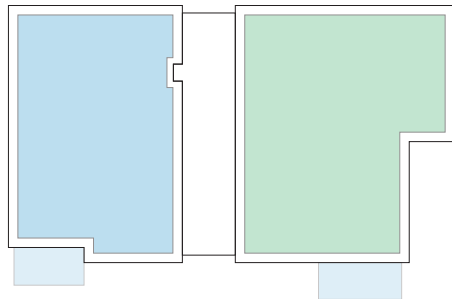
APPARTEMENT TYPE

011



1	séjour/cuisine	34,05m ²
2.1	chambre	15,10m ²
2.2	chambre	13,55m ²
3.1	salle de bains	7,70m ²
3.3	w.c.	1,90m ²
4.1	hall	12,85m ²
5.1	technique	6,85m ²
6.2	balcon	7,45m ²

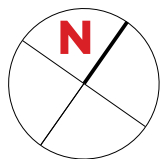
surface habitable
92,00m²



VENDU

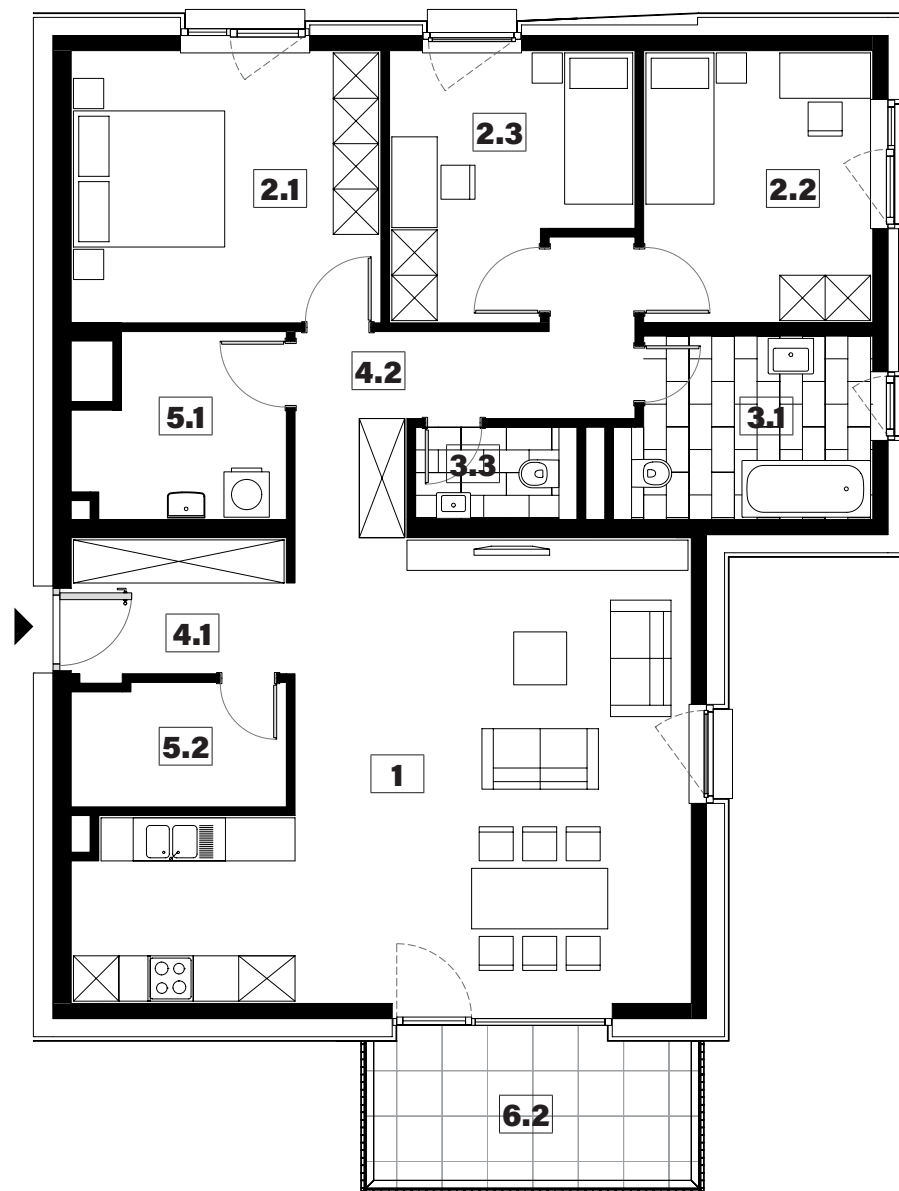
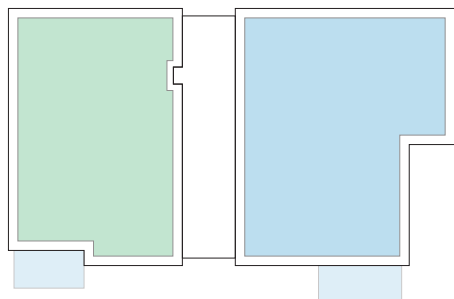
APARTEMENT TYPE

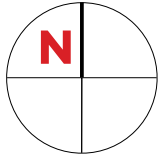
012



1	séjour/cuisine	39,40m ²
2.1	chambre	14,75m ²
2.2	chambre	10,90m ²
2.3	chambre	10,10m ²
3.1	salle de bains	7,55m ²
3.3	w.c.	2,30m ²
4.1	hall	5,25m ²
4.2	couloir	8,90m ²
5.1	technique	6,25m ²
5.2	débarras	4,60m ²
6.2	balcon	8,55m ²

surface habitable
110,00m²





PLAN DE SITUATION






ELMEN

image non contractuelle