

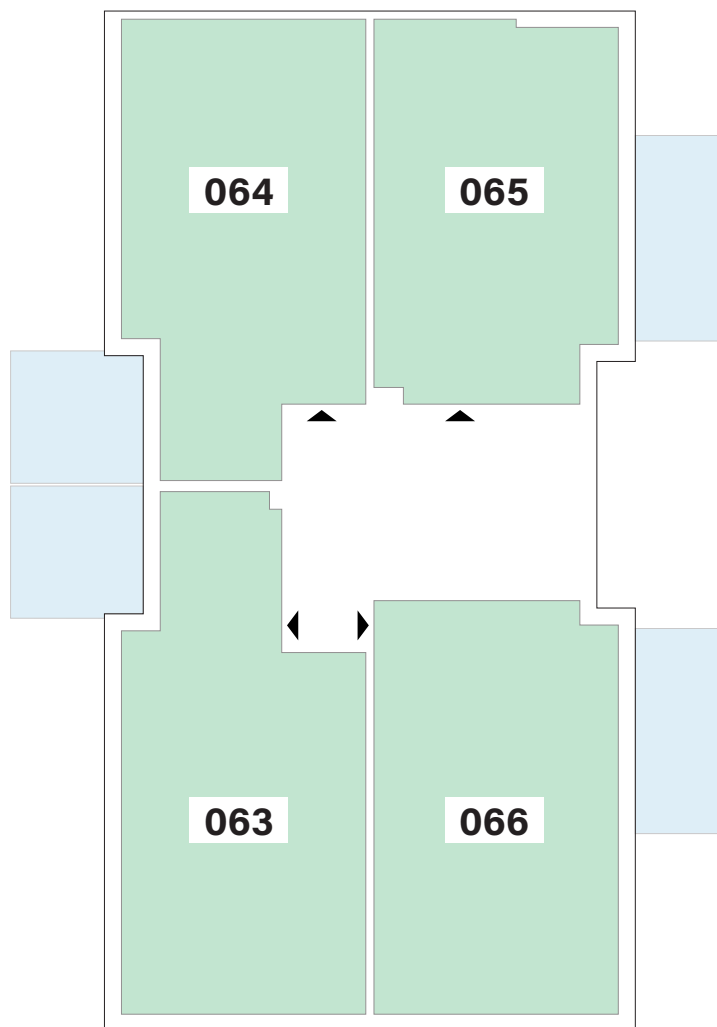
Résidence GRAPPE



image non contractuelle

APPARTEMENTS

REZ-DE-CHAUSSÉE

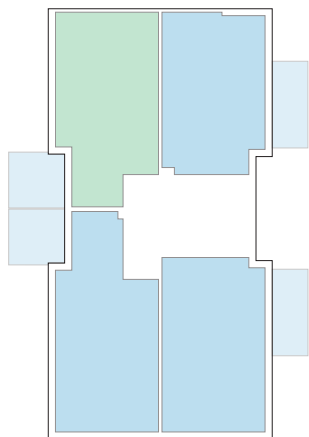
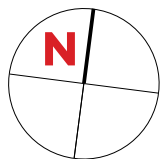


Type	Surface Utile	surface terrasse
063	92,31m ²	15,00m ²
064	85,67m ²	15,00m ²
065	76,64m ²	15,05m ²
066	85,09m ²	15,00m ²

- les surfaces inscrites dans ce tableau peuvent subir de légères modifications dues aux nécessités techniques de la construction.
- surface utile = surface calculée à l'intérieur des murs extérieurs.

APPARTEMENT TYPE

064

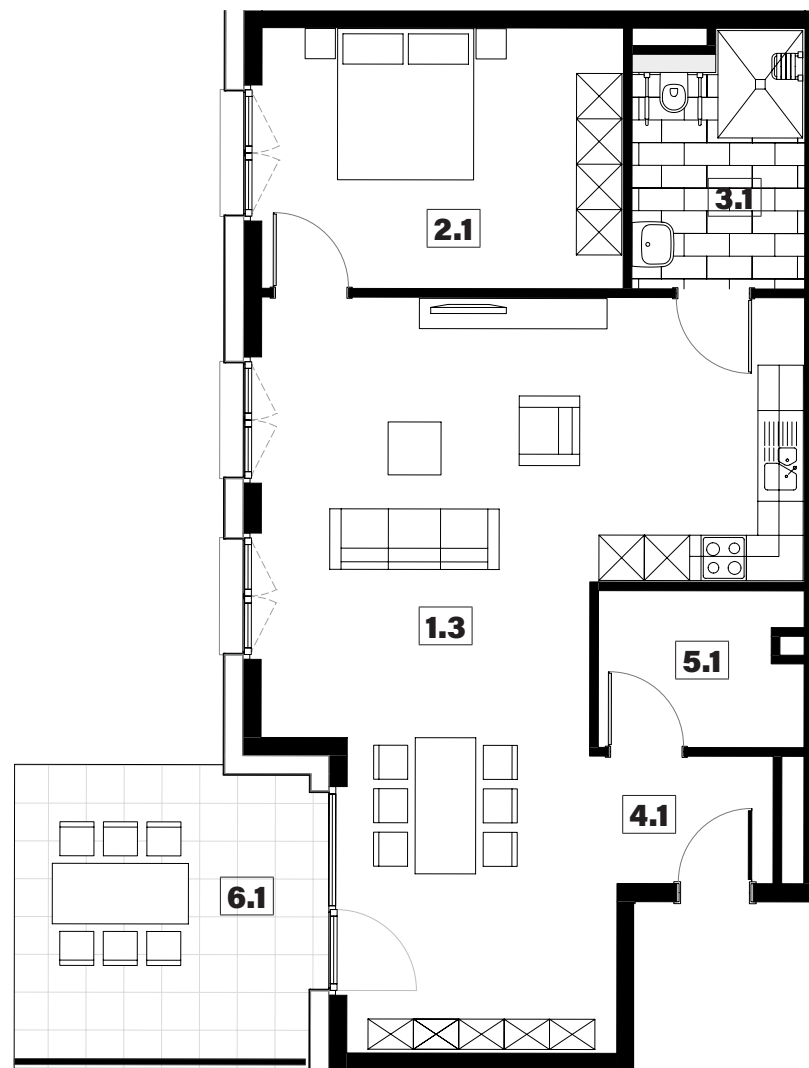


appartement conforme à la loi du 7 janvier 2022 portant sur l'accessibilité à tous

1.3	séjour/cuisine	50,80m²
2.1	chambre	16,50m²
3.1	salle de douche	7,50m²
4.1	hall	3,50m²
5.1	débarras	5,45m²
6.1	terrasse	15,00m²

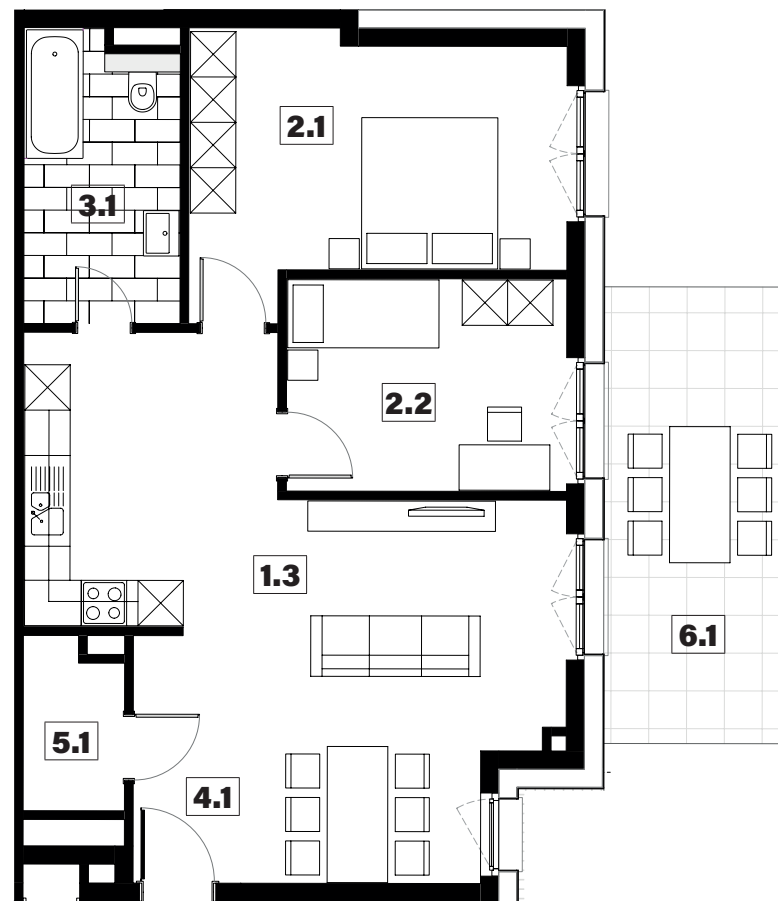
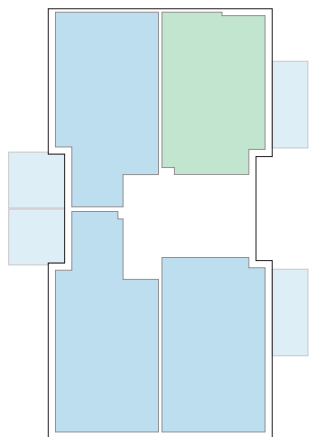
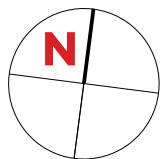
surface habitable

83,75m²



APPARTEMENT TYPE

065

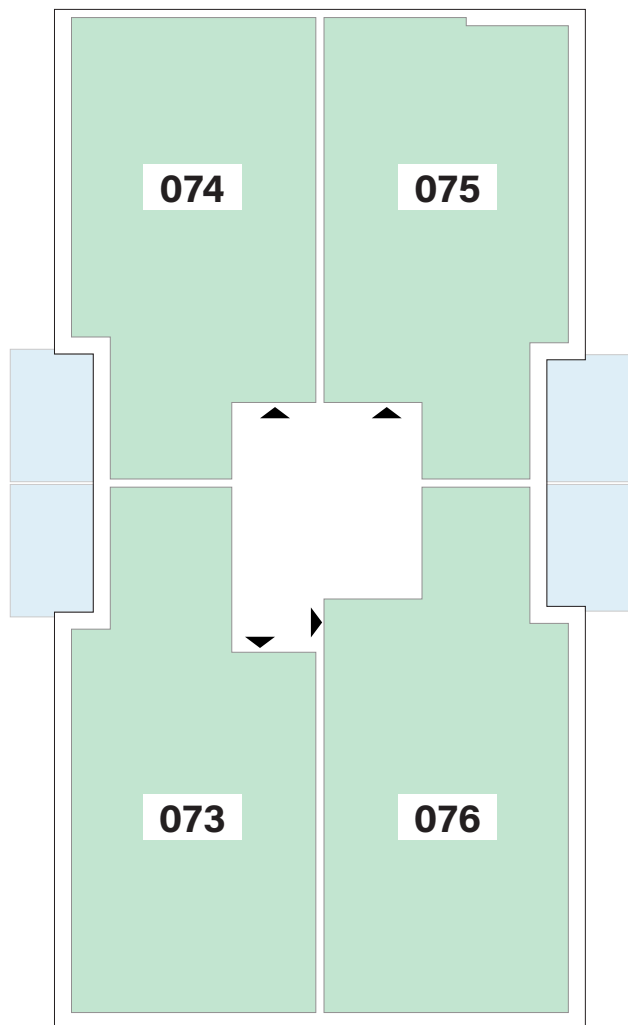


1.3	séjour/cuisine	32,50m ²
2.1	chambre	16,10m ²
2.2	chambre	10,40m ²
3.1	salle de bains	7,75m ²
4.1	hall	4,25m ²
5.1	débarras	2,90m ²
6.1	terrasse	15,05m ²

surface habitable

73,90m²

APPARTEMENTS 1^{er} ÉTAGE

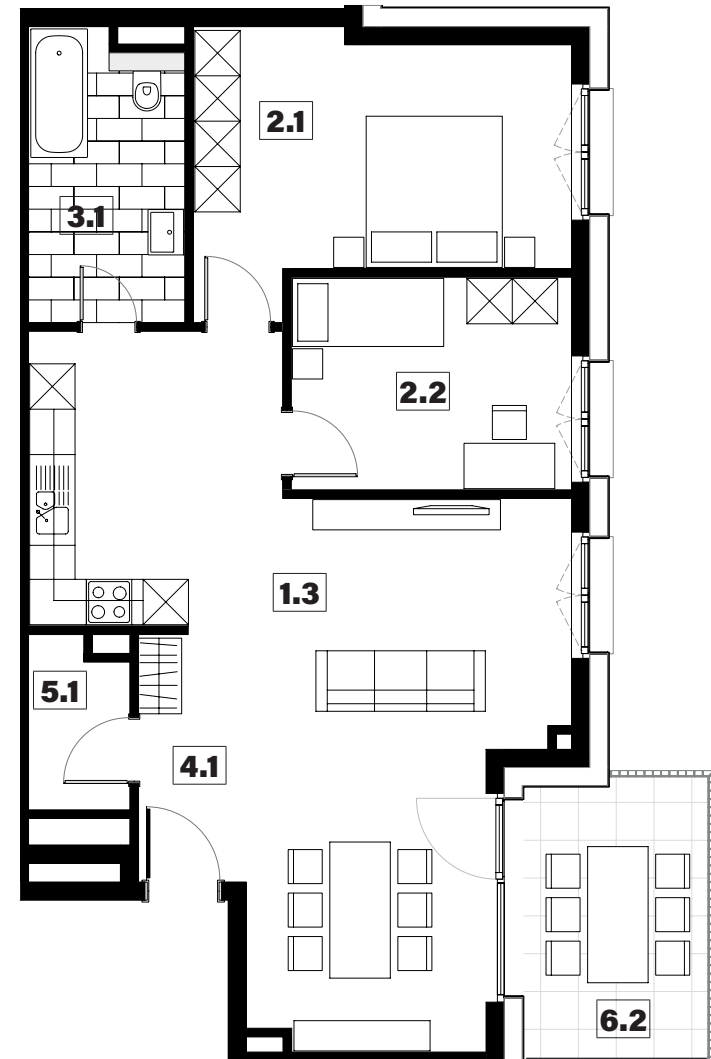
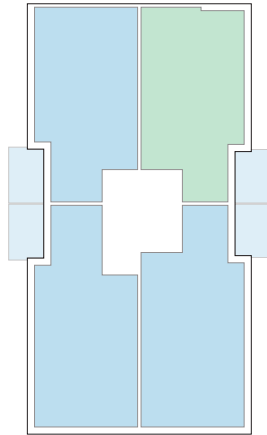
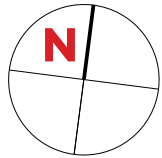


Type	Surface Utile	surface terrasse
073	92,95m ²	9,35m ²
074	85,88m ²	9,35m ²
075	83,63m ²	8,95m ²
076	95,38m ²	8,95m ²

- les surfaces inscrites dans ce tableau peuvent subir de légères modifications dues aux nécessités techniques de la construction.
- surface utile = surface calculée à l'intérieur des murs extérieurs.

APARTEMENT TYPE

075



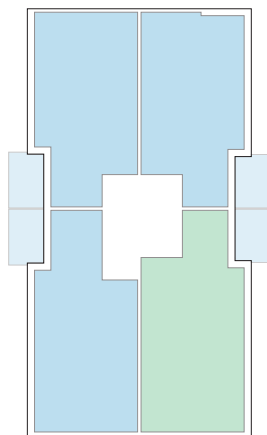
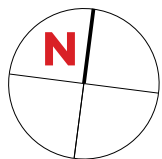
1.3	séjour/cuisine	39,05m ²
2.1	chambre	16,10m ²
2.2	chambre	10,40m ²
3.1	salle de bains	7,75m ²
4.1	hall	4,65m ²
5.1	débarras	2,90m ²
6.2	balcon	8,95m ²

surface habitable

80,85m²

APPARTEMENT TYPE

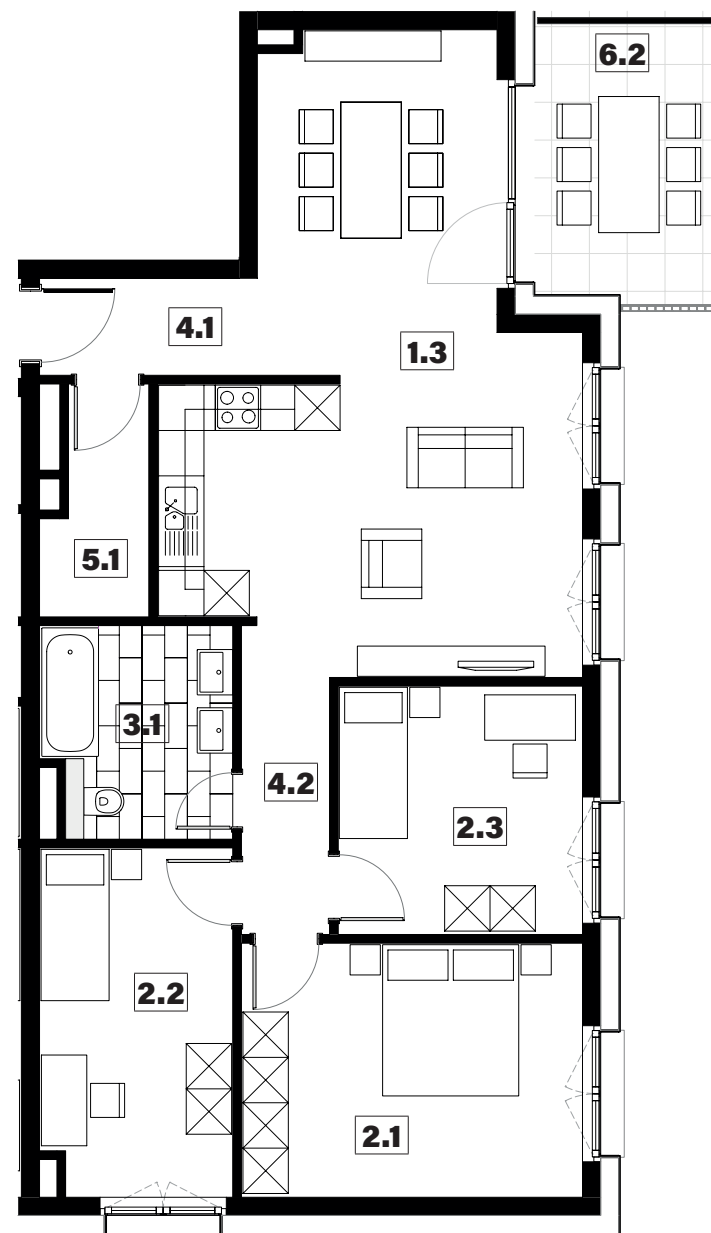
076



1.3	séjour/cuisine	34,00m ²
2.1	chambre	15,15m ²
2.2	chambre	11,60m ²
2.3	chambre	10,60m ²
3.1	salle de bains	6,85m ²
4.1	hall	5,10m ²
4.2	couloir	4,75m ²
5.1	débarras	3,75m ²
6.2	balcon	8,95m ²

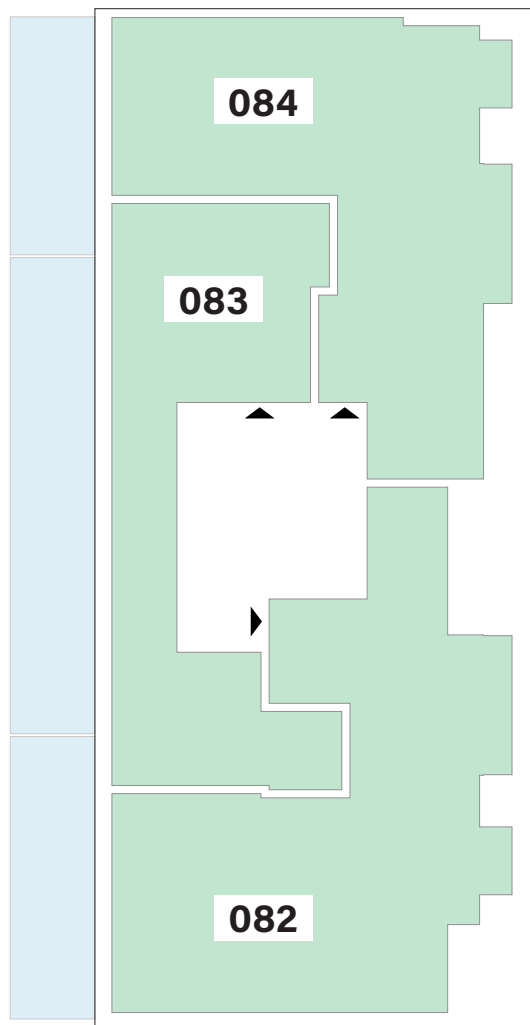
surface habitable

91,80m²



APPARTEMENTS

2^{ème} ÉTAGE

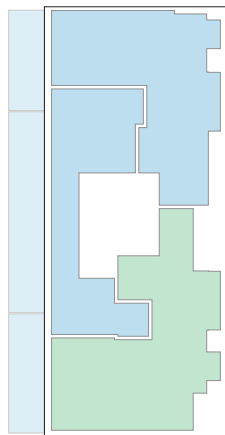
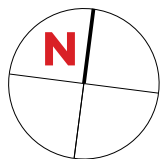


Type	Surface Utile	surface terrasse
082	100,46m ²	18,65m ²
083	62,18 m ²	32,15 m ²
084	85,75m ²	16,05m ²

- les surfaces inscrites dans ce tableau peuvent subir de légères modifications dues aux nécessités techniques de la construction.
- surface utile = surface calculée à l'intérieur des murs extérieurs.

APPARTEMENT TYPE

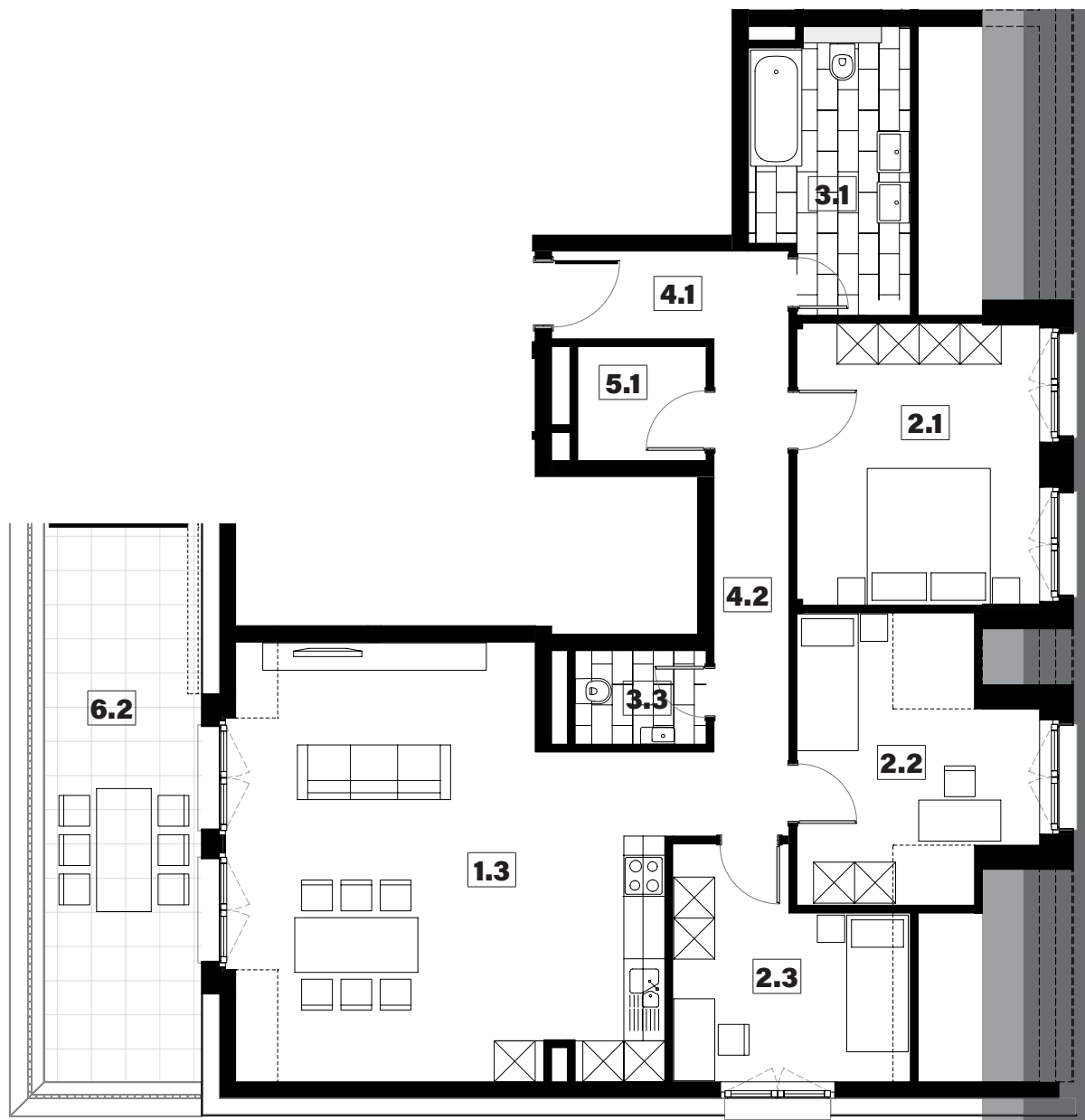
082



1.3	séjour/cuisine	35,90m ²
2.1	chambre	14,60m ²
2.2	chambre	10,30m ²
2.3	chambre	9,65m ²
3.1	salle de bains	9,00m ²
3.3	w.c.	2,60m ²
4.1	hall	3,05m ²
4.2	couloir	10,25m ²
5.1	débarras	3,15m ²
6.2	balcon	18,65m ²

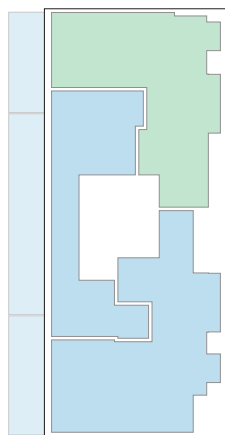
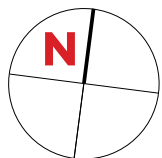
surface habitable

98,50m²



APARTEMENT TYPE

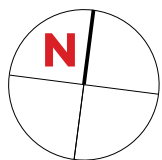
084



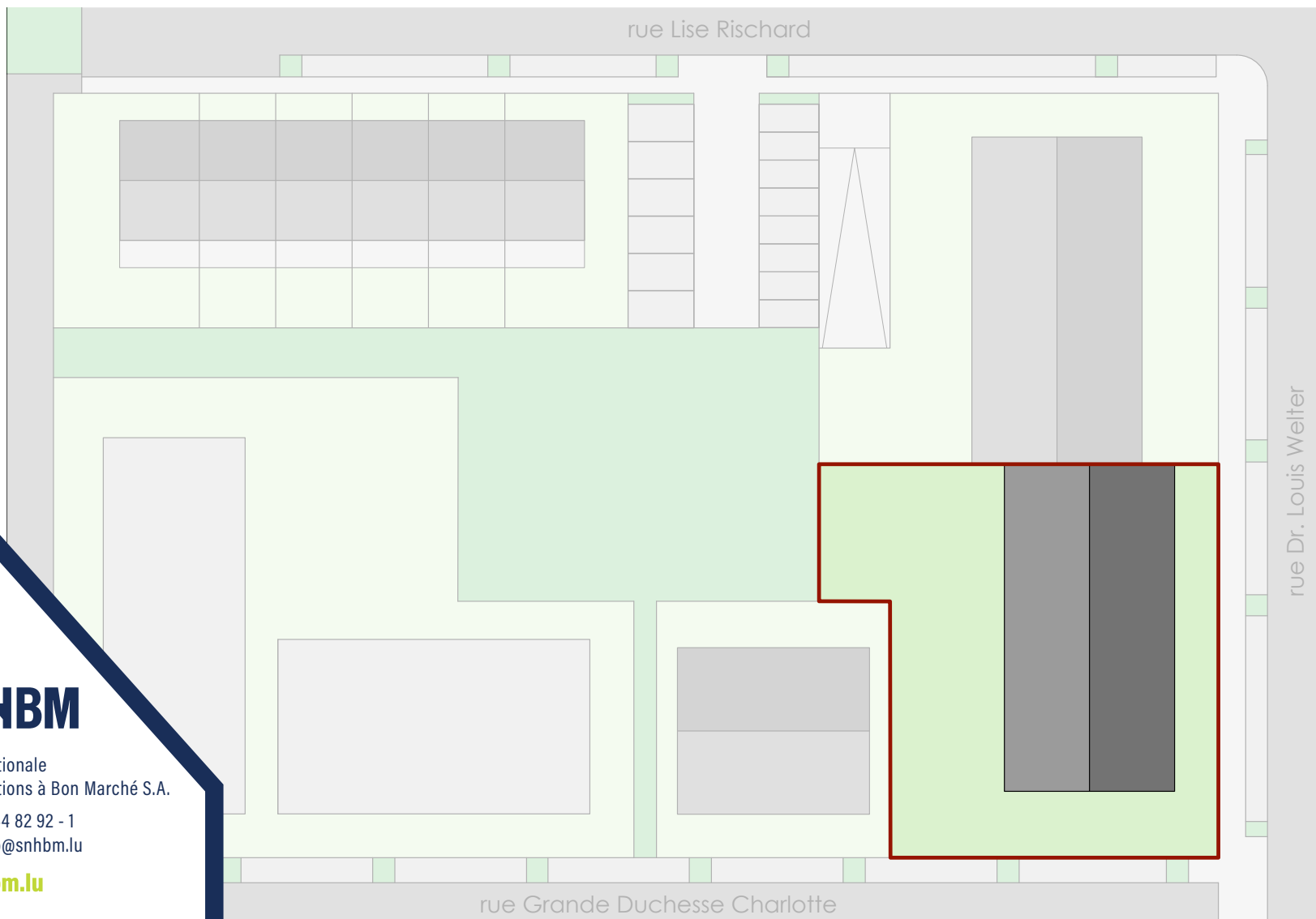
1.3	séjour/cuisine	33,30m ²
2.1	chambre	15,70m ²
2.2	chambre	10,85m ²
3.1	salle de bains	7,75m ²
3.3	w.c.	2,35m ²
4.1	hall	5,50m ²
4.2	couloir	6,60m ²
5.1	débarras	3,45m ²
6.2	balcon	16,05m ²

surface habitable

85,50m²



PLAN DE SITUATION



SNHBM
Société Nationale
des Habitations à Bon Marché S.A.
Tel.: +352 44 82 92 - 1
E-mail: info@snhbm.lu
 snhbm.lu