

# Résidence ALBI



Image non contractuelle

## APPARTEMENTS

# REZ-DE-CHAUSSÉE



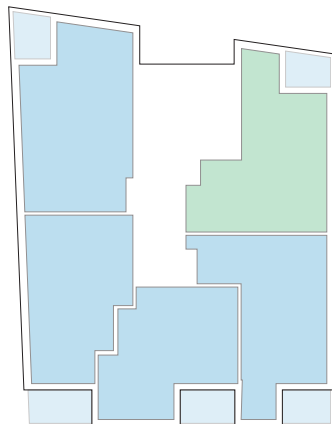
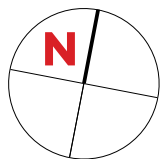
Type	Surface Utile	surface terrasse
<b>023</b>	88,45m <sup>2</sup>	8,30m <sup>2</sup>
<b>024</b>	85,18m <sup>2</sup>	9,05m <sup>2</sup>
<b>025</b>	76,29m <sup>2</sup>	10,10m <sup>2</sup>
<b>026</b>	81,52m <sup>2</sup>	11,65m <sup>2</sup>
<b>027</b>	99,33m <sup>2</sup>	9,05m <sup>2</sup>

- les surfaces inscrites dans ce tableau peuvent subir de légères modifications dues aux nécessités techniques de la construction.
- surface utile = surface calculée à l'intérieur des murs extérieurs.



APPARTEMENT TYPE

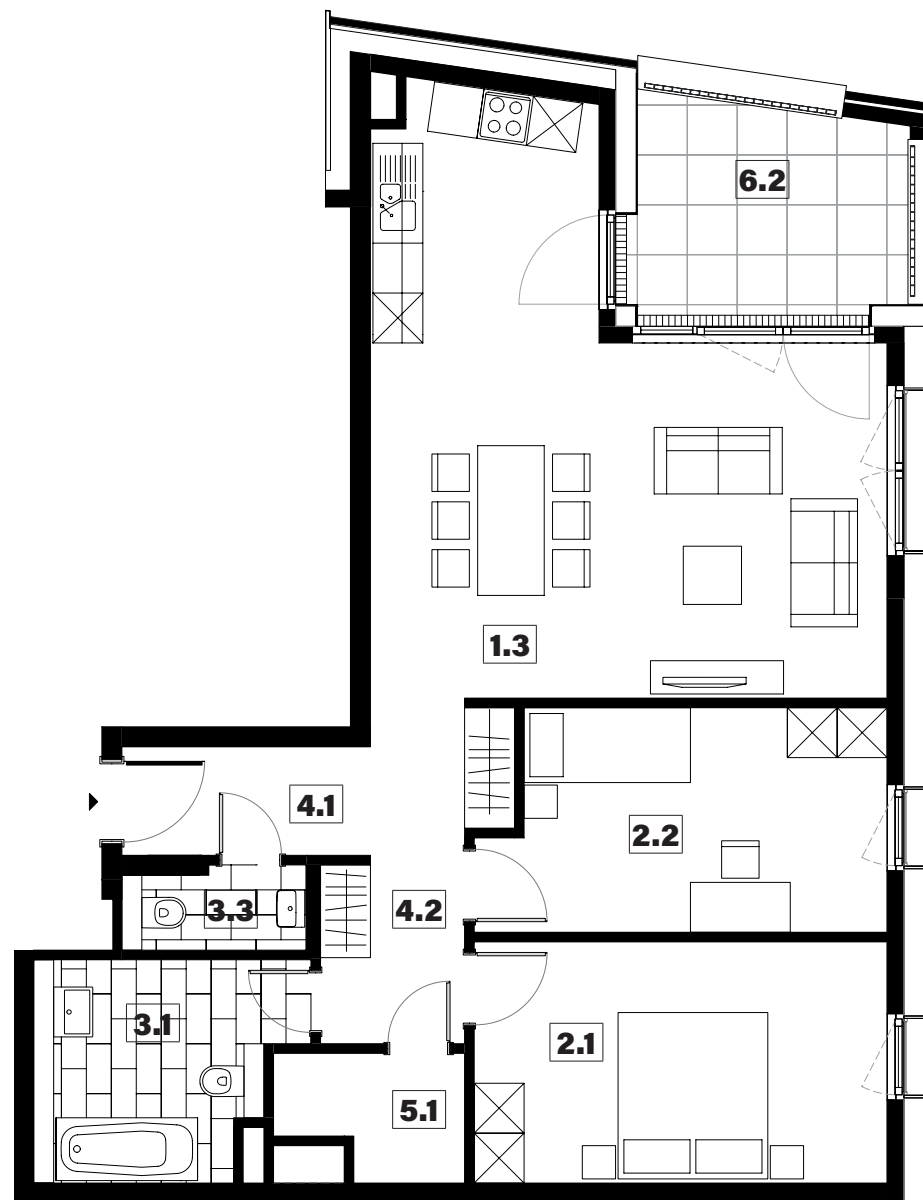
023



1.3	séjour/cuisine	34,65m <sup>2</sup>
2.1	chambre	14,40m <sup>2</sup>
2.2	chambre	12,45m <sup>2</sup>
3.1	salle de bains	7,70m <sup>2</sup>
3.3	w.c.	2,10m <sup>2</sup>
4.1	hall	3,90m <sup>2</sup>
4.2	couloir	6,85m <sup>2</sup>
5.1	technique	3,00m <sup>2</sup>
6.2	loggia	8,30m <sup>2</sup>

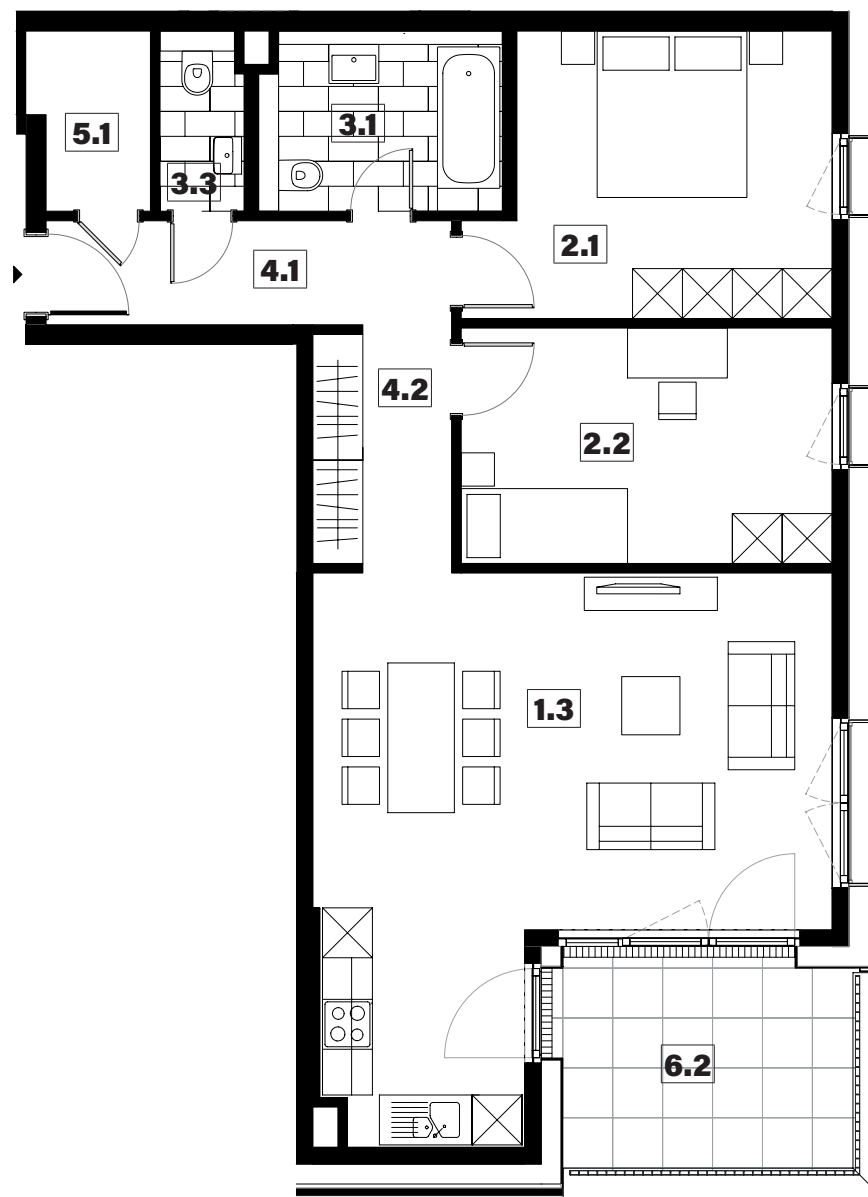
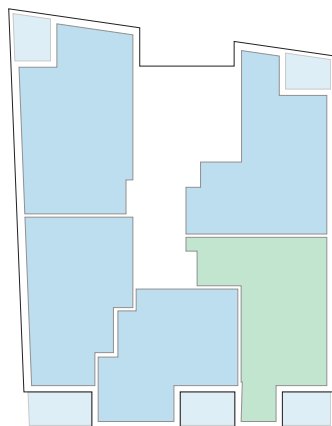
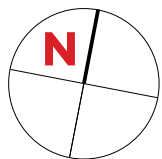
surface habitable

**85,05m<sup>2</sup>**



APARTEMENT TYPE

024



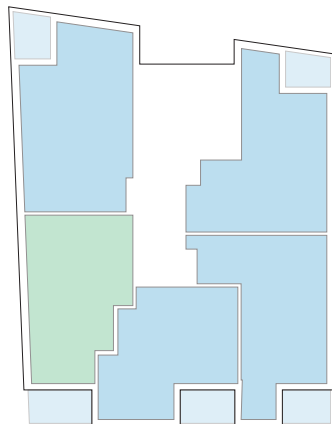
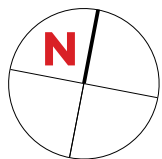
1.3	séjour/cuisine	33,15m <sup>2</sup>
2.1	chambre	13,85m <sup>2</sup>
2.2	chambre	12,60m <sup>2</sup>
3.1	salle de bains	6,20m <sup>2</sup>
3.3	w.c.	2,10m <sup>2</sup>
4.1	hall	4,75m <sup>2</sup>
4.2	couloir	6,15m <sup>2</sup>
5.1	technique	2,95m <sup>2</sup>
6.2	loggia	9,05m <sup>2</sup>

surface habitable

**81,75m<sup>2</sup>**

APPARTEMENT TYPE

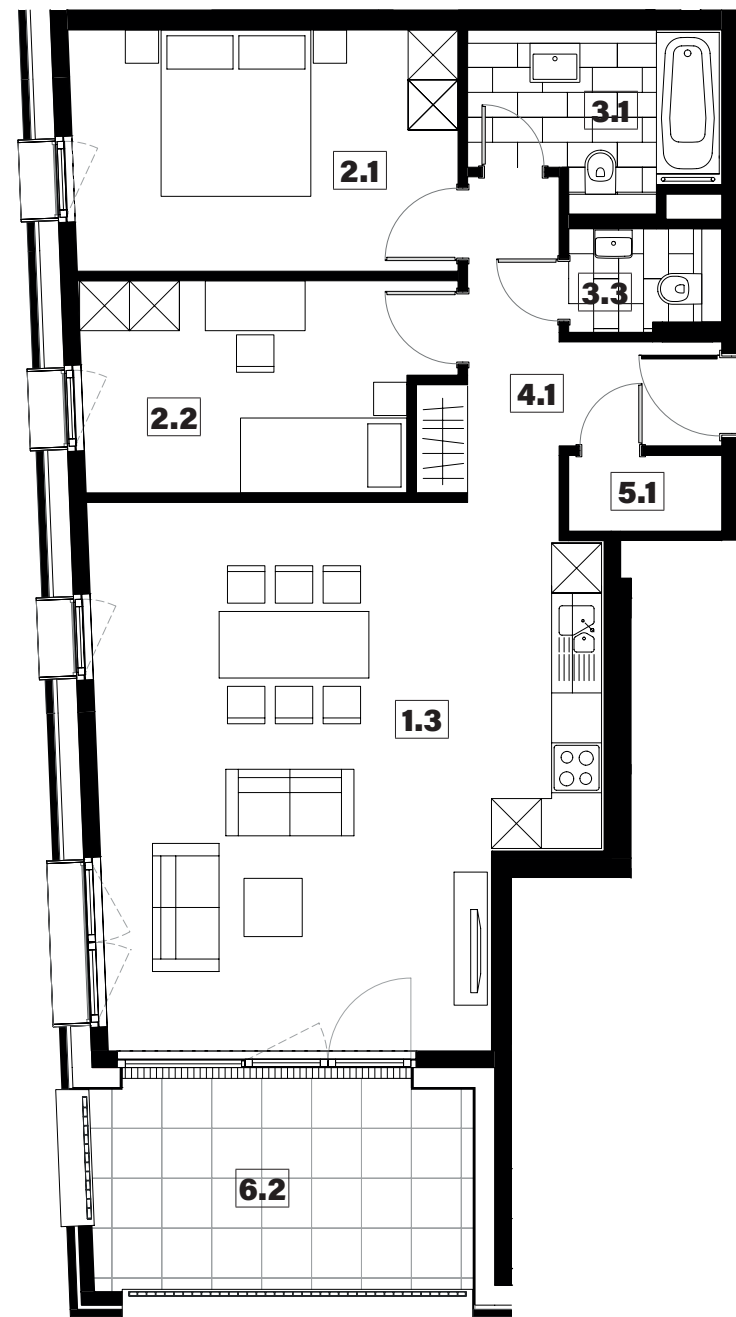
026



1.3	séjour/cuisine	37,10m <sup>2</sup>
2.1	chambre	13,40m <sup>2</sup>
2.2	chambre	10,65m <sup>2</sup>
3.1	salle de bains	5,80m <sup>2</sup>
3.3	w.c.	2,15m <sup>2</sup>
4.1	hall	7,55m <sup>2</sup>
5.1	technique	1,65m <sup>2</sup>
6.2	loggia	11,65m <sup>2</sup>

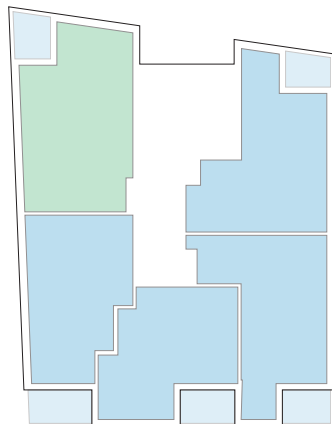
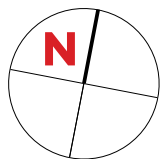
surface habitable

**78,30m<sup>2</sup>**



APPARTEMENT TYPE

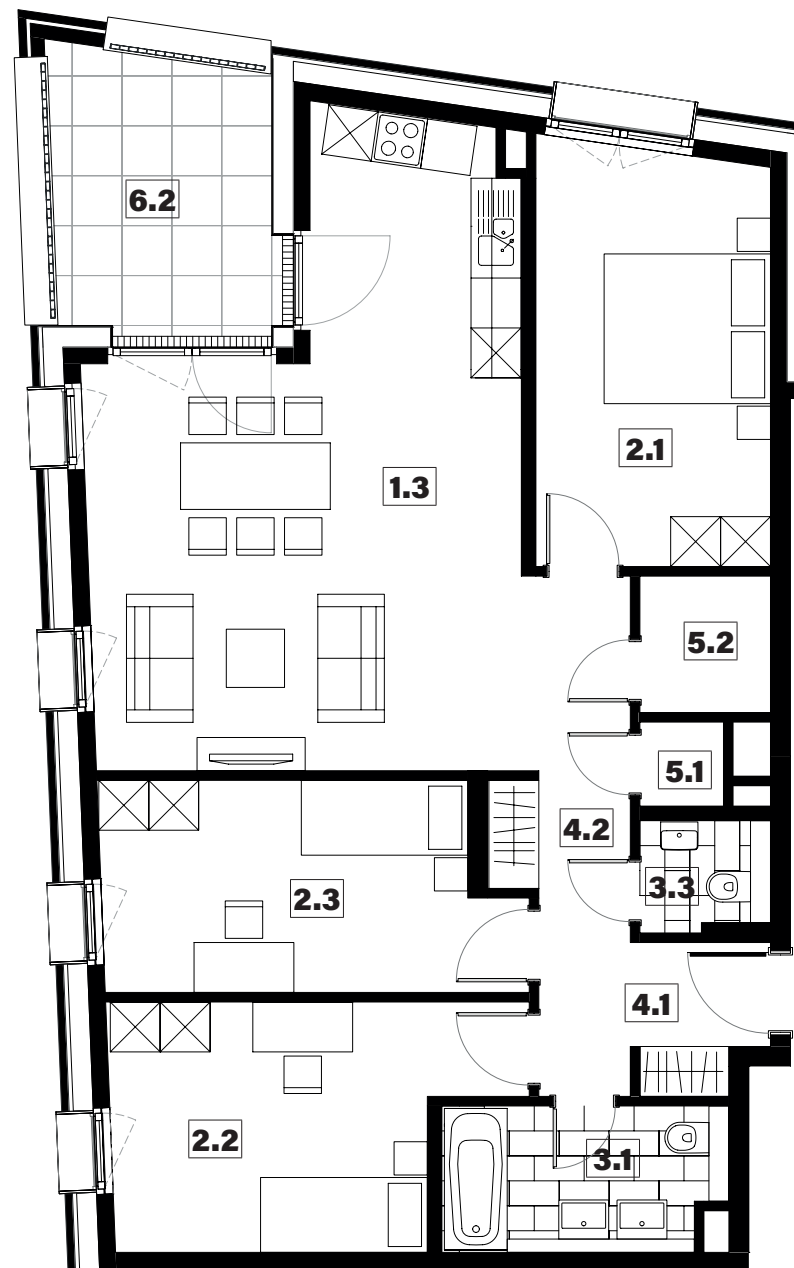
027



1.3	séjour/cuisine	32,85m <sup>2</sup>
2.1	chambre	14,10m <sup>2</sup>
2.2	chambre	12,85m <sup>2</sup>
2.3	chambre	12,05m <sup>2</sup>
3.1	salle de bains	5,80m <sup>2</sup>
3.3	w.c.	2,00m <sup>2</sup>
4.1	hall	4,75m <sup>2</sup>
4.2	couloir	6,10m <sup>2</sup>
5.1	technique	1,00m <sup>2</sup>
5.2	débarras	2,55m <sup>2</sup>
6.2	loggia	9,05m <sup>2</sup>

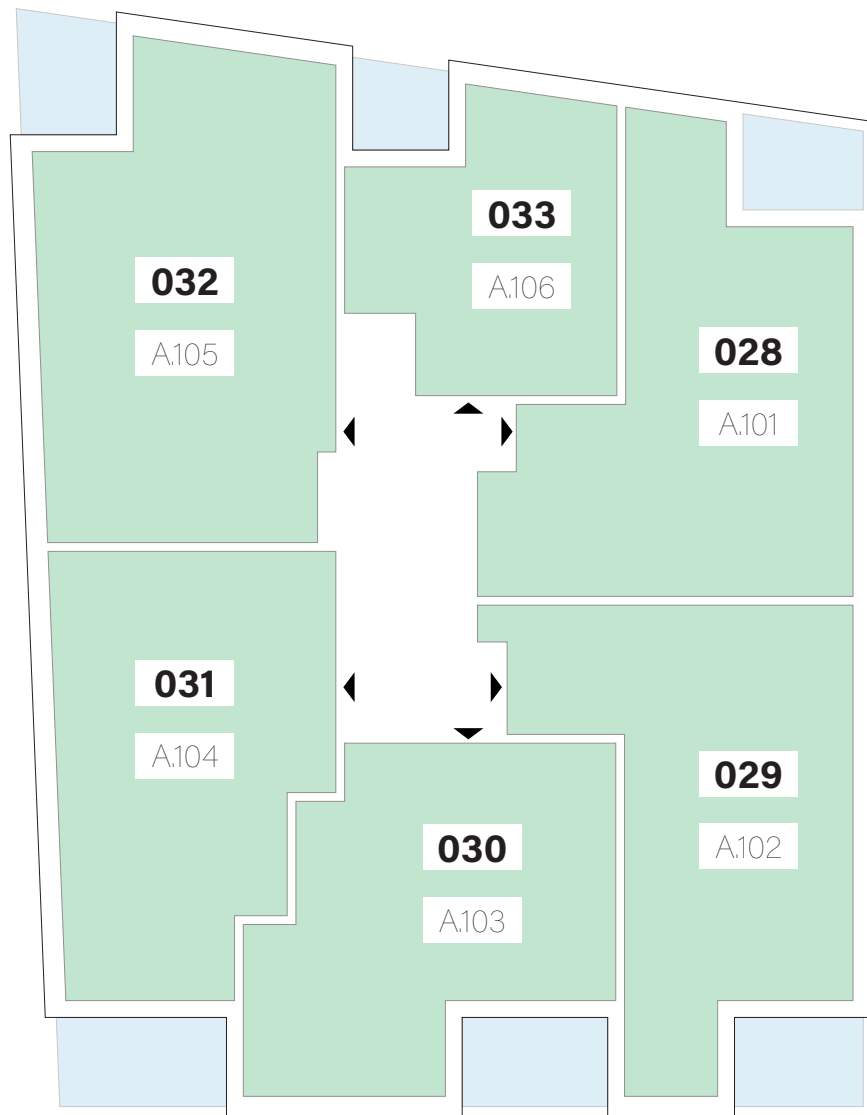
surface habitable

**94,05m<sup>2</sup>**



# APPARTEMENTS

## 1<sup>er</sup> ÉTAGE

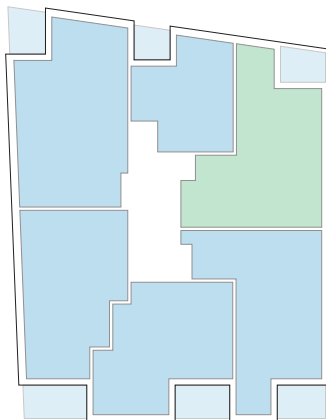
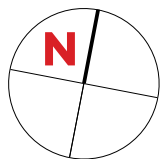


Type	Surface Utile	surface terrasse
<b>028</b>	88,45m <sup>2</sup>	8,30m <sup>2</sup>
<b>029</b>	85,18m <sup>2</sup>	9,05m <sup>2</sup>
<b>030</b>	76,29m <sup>2</sup>	10,10m <sup>2</sup>
<b>031</b>	81,52m <sup>2</sup>	11,65m <sup>2</sup>
<b>032</b>	99,42m <sup>2</sup>	9,05m <sup>2</sup>
<b>033</b>	49,52m <sup>2</sup>	6,65m <sup>2</sup>

- les surfaces inscrites dans ce tableau peuvent subir de légères modifications dues aux nécessités techniques de la construction.
- surface utile = surface calculée à l'intérieur des murs extérieurs.

APPARTEMENT TYPE

028



1.3	séjour/cuisine	34,65m <sup>2</sup>
2.1	chambre	14,40m <sup>2</sup>
2.2	chambre	12,45m <sup>2</sup>
3.1	salle de bains	7,70m <sup>2</sup>
3.3	w.c.	2,10m <sup>2</sup>
4.1	hall	3,90m <sup>2</sup>
4.2	couloir	6,85m <sup>2</sup>
5.1	technique	3,00m <sup>2</sup>
6.2	loggia	8,30m <sup>2</sup>

surface habitable

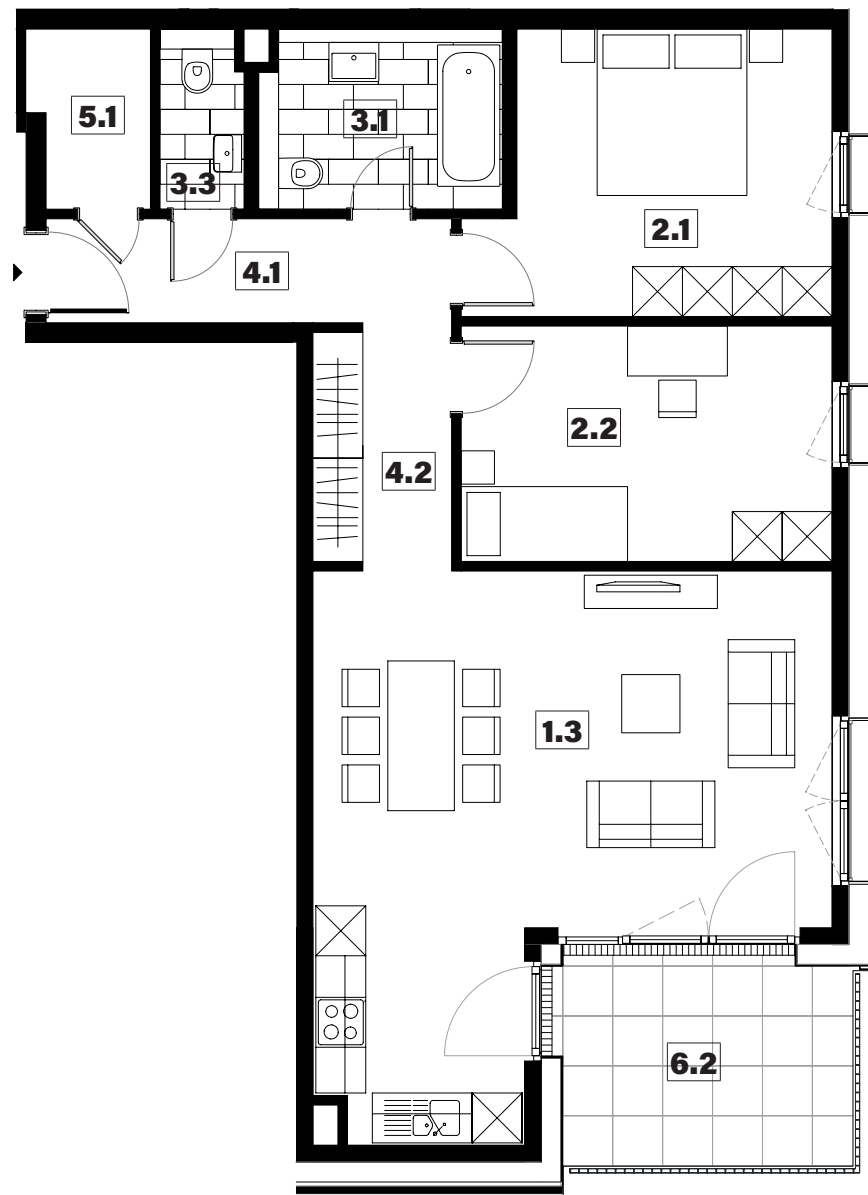
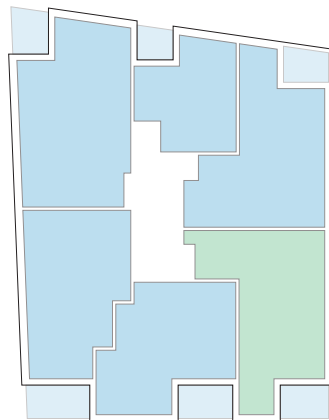
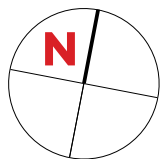
**85,05m<sup>2</sup>**





APARTEMENT TYPE

029



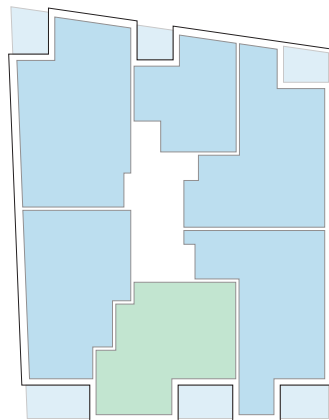
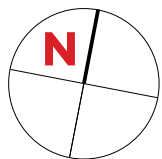
1.3	séjour/cuisine	33,15m <sup>2</sup>
2.1	chambre	13,85m <sup>2</sup>
2.2	chambre	12,60m <sup>2</sup>
3.1	salle de bains	6,20m <sup>2</sup>
3.3	w.c.	2,10m <sup>2</sup>
4.1	hall	4,75m <sup>2</sup>
4.2	couloir	6,15m <sup>2</sup>
5.1	technique	2,95m <sup>2</sup>
6.2	loggia	9,05m <sup>2</sup>

surface habitable

**81,75m<sup>2</sup>**

APPARTEMENT TYPE

030



1.3	séjour/cuisine	30,25m <sup>2</sup>
2.1	chambre	13,35m <sup>2</sup>
2.2	chambre	12,00m <sup>2</sup>
3.1	salle de bains	6,10m <sup>2</sup>
3.3	w.c.	2,15m <sup>2</sup>
4.1	hall	2,15m <sup>2</sup>
4.2	couloir	4,60m <sup>2</sup>
5.1	technique	1,70m <sup>2</sup>
6.2	loggia	10,10m <sup>2</sup>

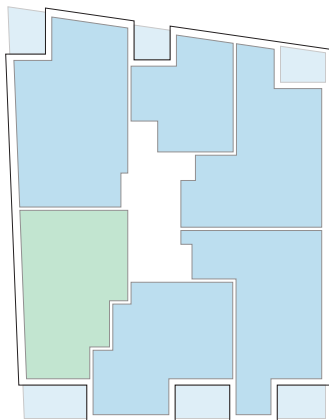
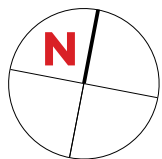
surface habitable

**72,30m<sup>2</sup>**



APPARTEMENT TYPE

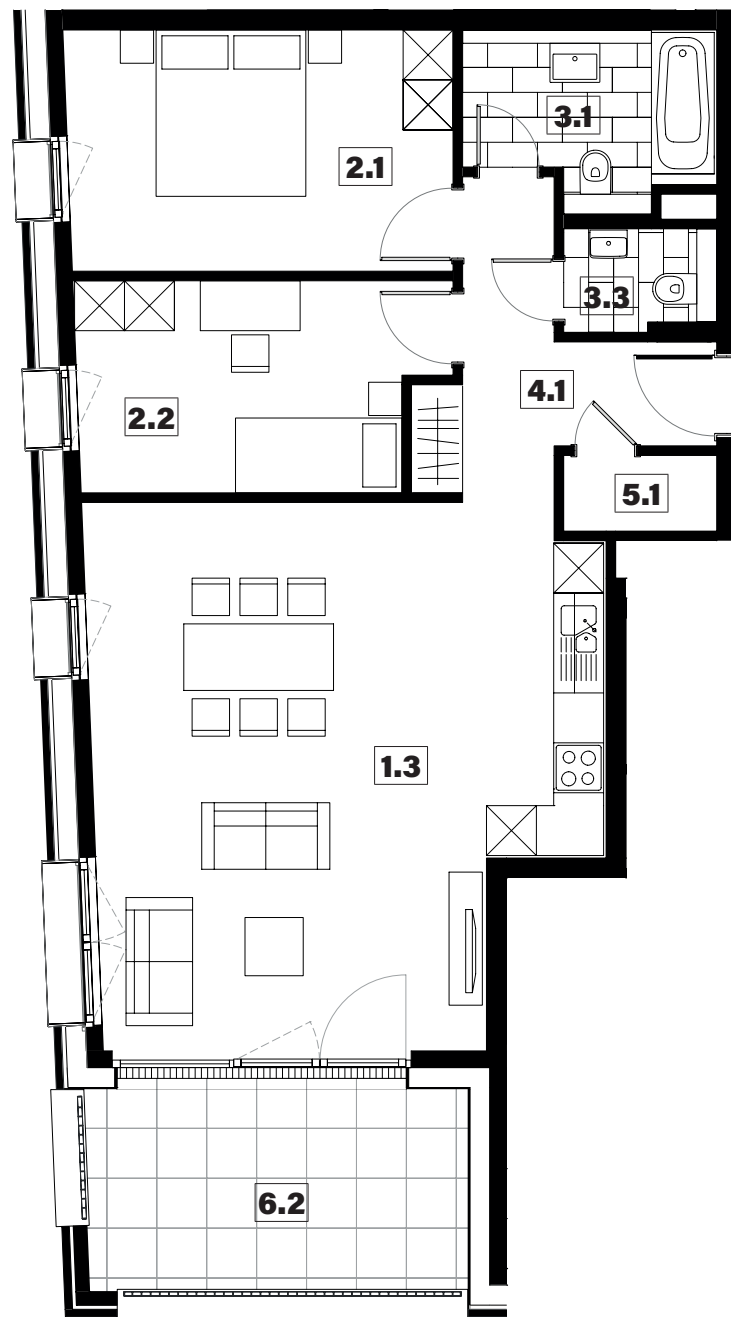
031



1.3	séjour/cuisine	37,10m <sup>2</sup>
2.1	chambre	13,40m <sup>2</sup>
2.2	chambre	10,65m <sup>2</sup>
3.1	salle de bains	5,80m <sup>2</sup>
3.3	w.c.	2,15m <sup>2</sup>
4.1	hall	7,55m <sup>2</sup>
5.1	technique	1,65m <sup>2</sup>
6.2	loggia	11,65m <sup>2</sup>

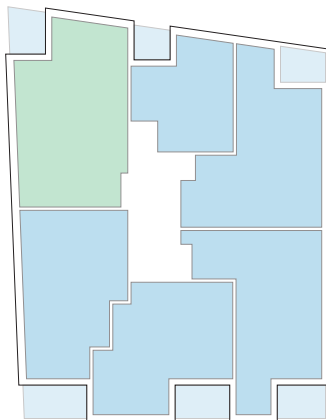
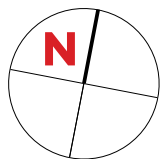
surface habitable

**78,30m<sup>2</sup>**



APPARTEMENT TYPE

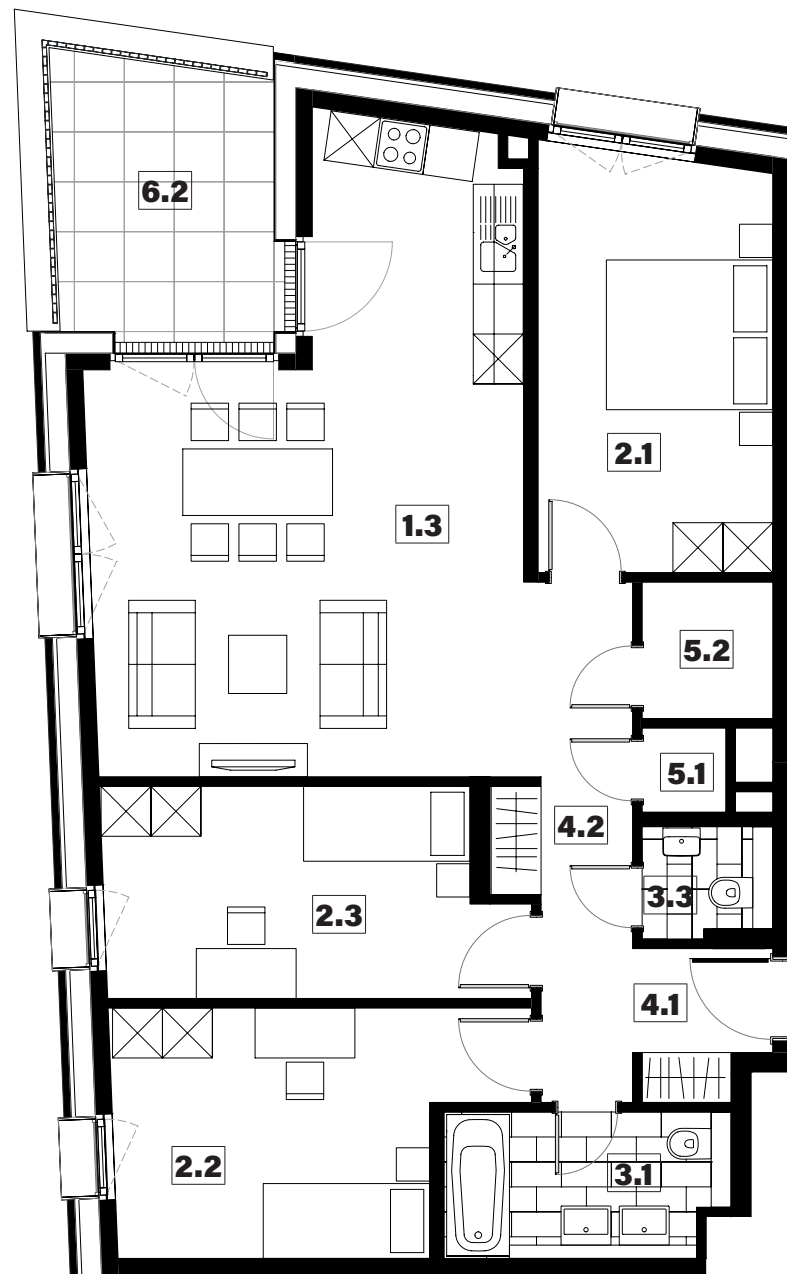
032



1.3	séjour/cuisine	32,90m <sup>2</sup>
2.1	chambre	14,10m <sup>2</sup>
2.2	chambre	12,85m <sup>2</sup>
2.3	chambre	12,05m <sup>2</sup>
3.1	salle de bains	5,80m <sup>2</sup>
3.3	w.c.	2,00m <sup>2</sup>
4.1	hall	4,75m <sup>2</sup>
4.2	couloir	6,10m <sup>2</sup>
5.1	technique	1,00m <sup>2</sup>
5.2	débarras	2,55m <sup>2</sup>
6.2	loggia	9,05m <sup>2</sup>

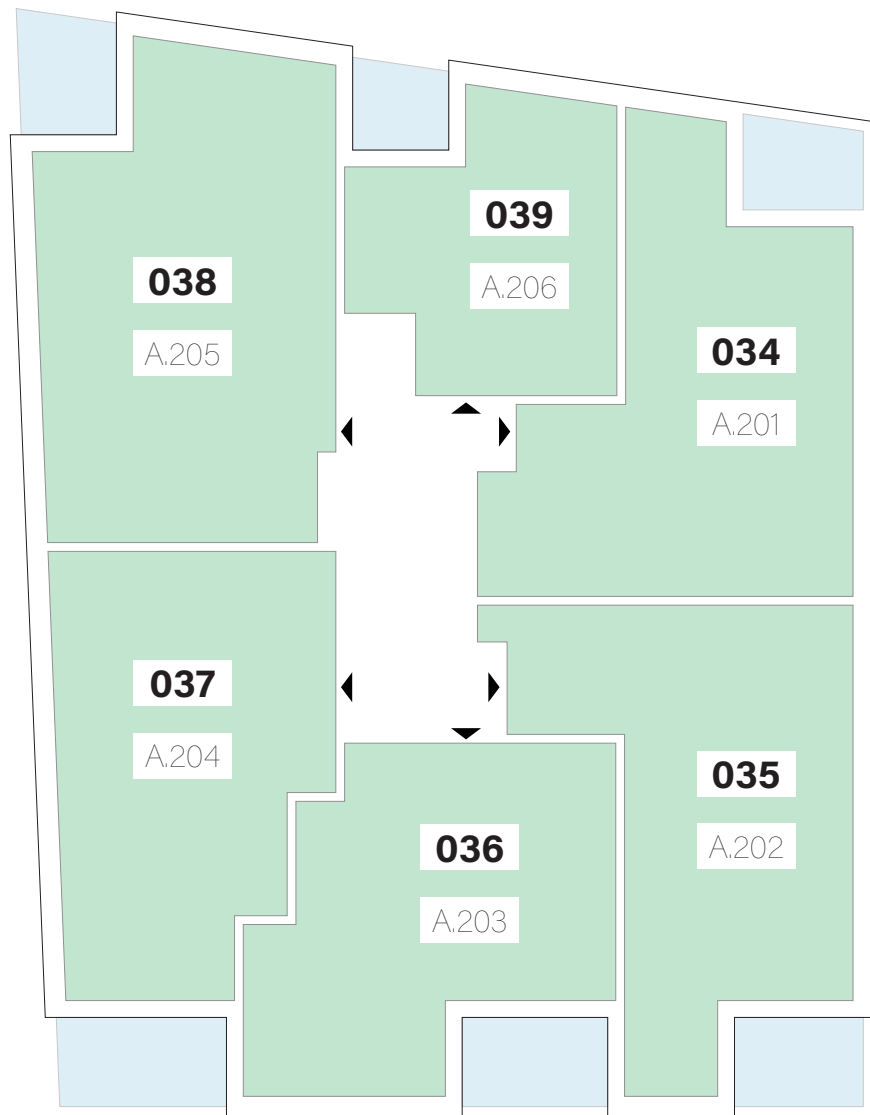
surface habitable

**94,10m<sup>2</sup>**



# APPARTEMENTS

## 2<sup>ème</sup> ÉTAGE

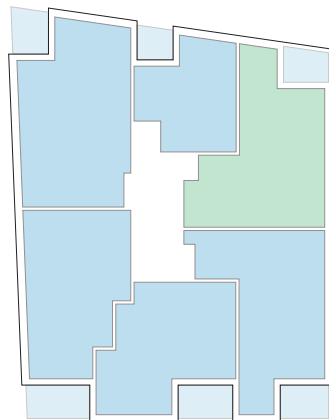
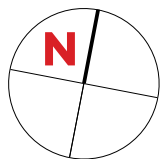


Type	Surface Utile	surface terrasse
<b>034</b>	88,45m <sup>2</sup>	8,30m <sup>2</sup>
<b>035</b>	85,18m <sup>2</sup>	9,05m <sup>2</sup>
<b>036</b>	76,29m <sup>2</sup>	10,10m <sup>2</sup>
<b>037</b>	81,52m <sup>2</sup>	11,65m <sup>2</sup>
<b>038</b>	99,42m <sup>2</sup>	9,05m <sup>2</sup>
<b>039</b>	49,52m <sup>2</sup>	6,65m <sup>2</sup>

- les surfaces inscrites dans ce tableau peuvent subir de légères modifications dues aux nécessités techniques de la construction.
- surface utile = surface calculée à l'intérieur des murs extérieurs.

APPARTEMENT TYPE

034



1.3	séjour/cuisine	34,65m <sup>2</sup>
2.1	chambre	14,40m <sup>2</sup>
2.2	chambre	12,45m <sup>2</sup>
3.1	salle de bains	7,70m <sup>2</sup>
3.3	w.c.	2,10m <sup>2</sup>
4.1	hall	3,90m <sup>2</sup>
4.2	couloir	6,85m <sup>2</sup>
5.1	technique	3,00m <sup>2</sup>
6.2	loggia	8,30m <sup>2</sup>

surface habitable

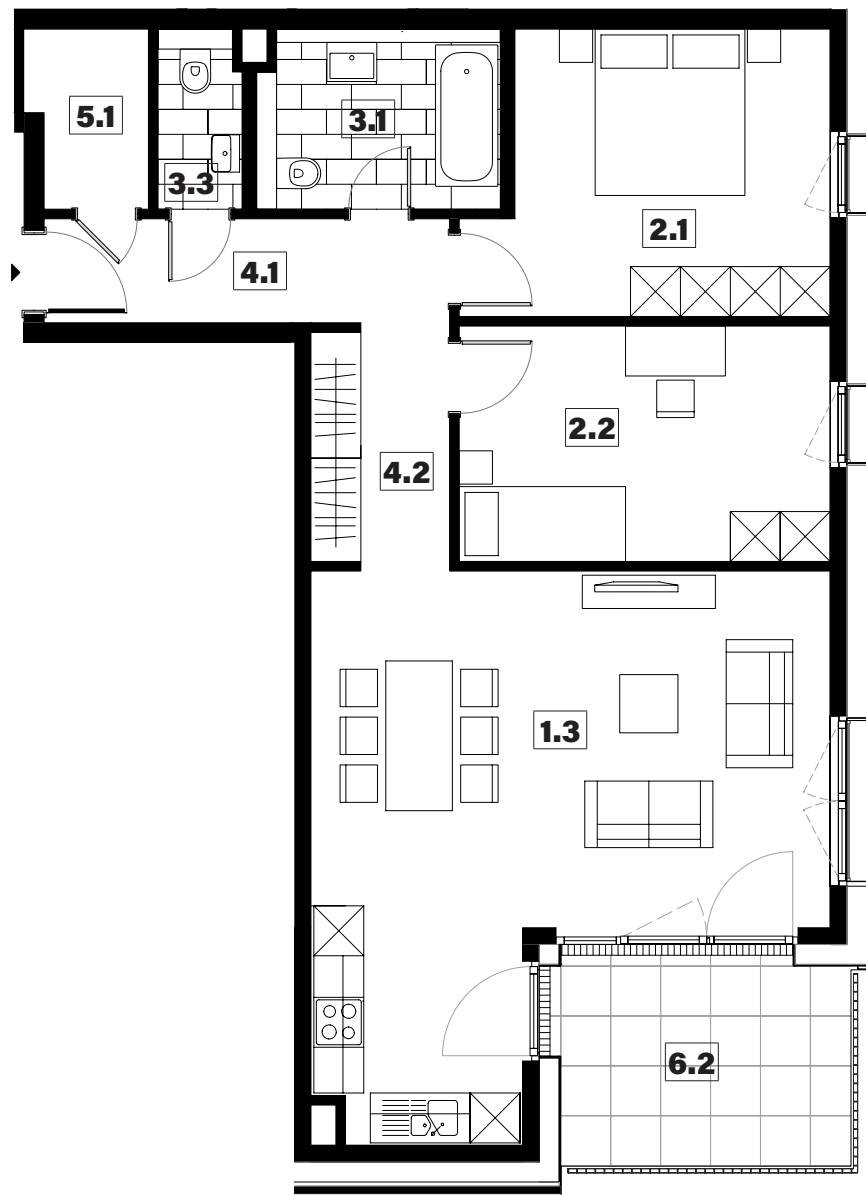
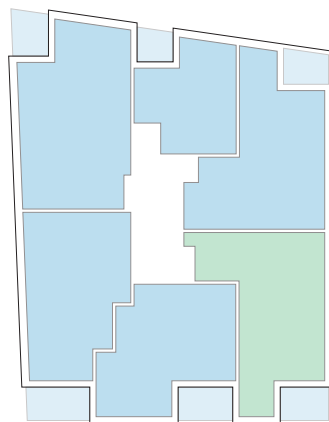
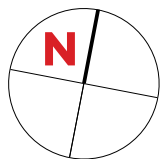
**85,05m<sup>2</sup>**





APARTEMENT TYPE

035



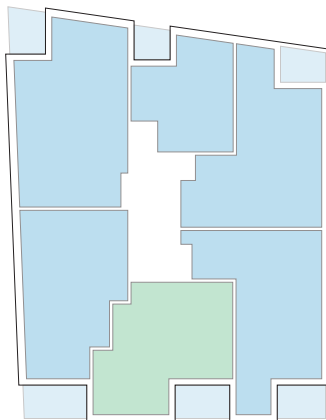
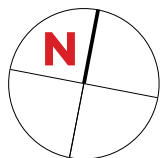
1.3	séjour/cuisine	33,15m <sup>2</sup>
2.1	chambre	13,85m <sup>2</sup>
2.2	chambre	12,60m <sup>2</sup>
3.1	salle de bains	6,20m <sup>2</sup>
3.3	w.c.	2,10m <sup>2</sup>
4.1	hall	4,75m <sup>2</sup>
4.2	couloir	6,15m <sup>2</sup>
5.1	technique	2,95m <sup>2</sup>
6.2	loggia	9,05m <sup>2</sup>

surface habitable

**81,75m<sup>2</sup>**

APPARTEMENT TYPE

036



1.3	séjour/cuisine	30,25m <sup>2</sup>
2.1	chambre	13,35m <sup>2</sup>
2.2	chambre	12,00m <sup>2</sup>
3.1	salle de bains	6,10m <sup>2</sup>
3.3	w.c.	2,15m <sup>2</sup>
4.1	hall	2,15m <sup>2</sup>
4.2	couloir	4,60m <sup>2</sup>
5.1	technique	1,70m <sup>2</sup>
6.2	loggia	10,10m <sup>2</sup>

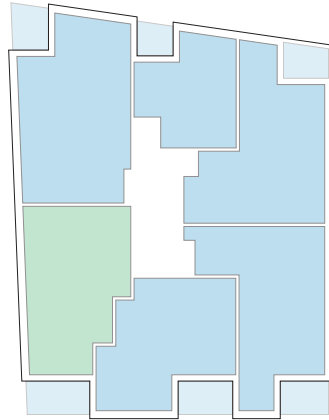
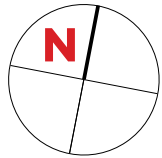
surface habitable

**72,30m<sup>2</sup>**



APPARTEMENT TYPE

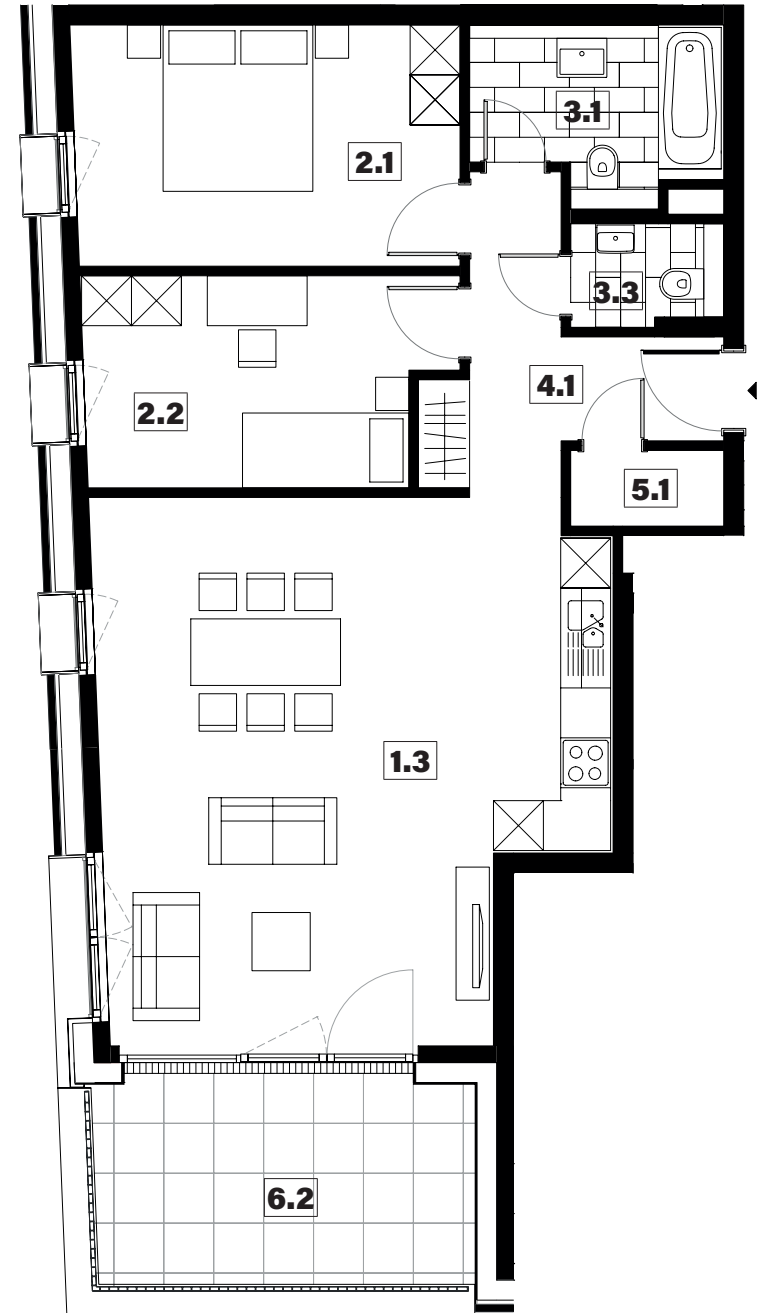
037



1.3	séjour/cuisine	37,10m <sup>2</sup>
2.1	chambre	13,40m <sup>2</sup>
2.2	chambre	10,65m <sup>2</sup>
3.1	salle de bains	5,80m <sup>2</sup>
3.3	w.c.	2,15m <sup>2</sup>
4.1	hall	7,55m <sup>2</sup>
5.1	technique	1,65m <sup>2</sup>
6.2	loggia	11,65m <sup>2</sup>

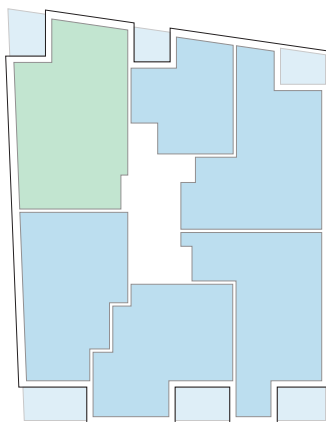
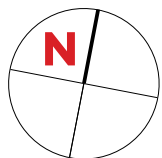
surface habitable

**78,30m<sup>2</sup>**



APPARTEMENT TYPE

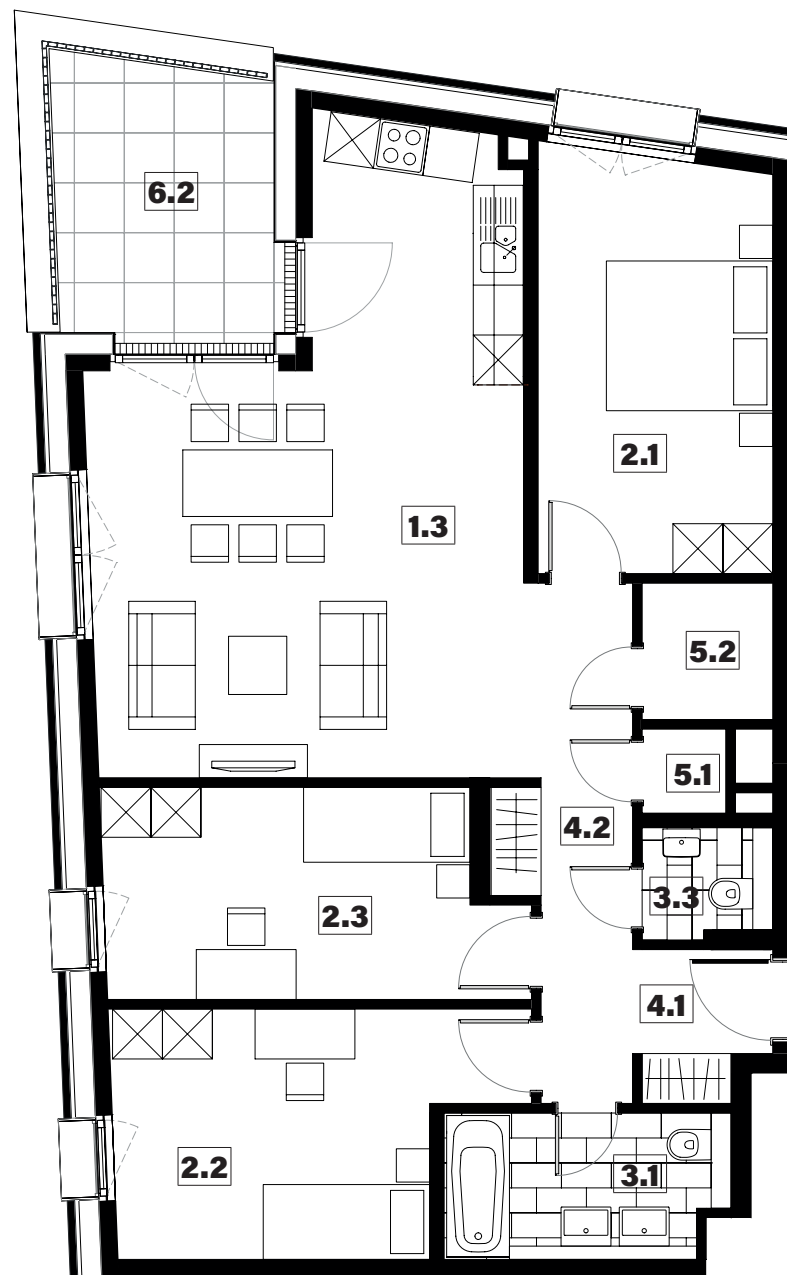
038



1.3	séjour/cuisine	32,90m <sup>2</sup>
2.1	chambre	14,10m <sup>2</sup>
2.2	chambre	12,85m <sup>2</sup>
2.3	chambre	12,05m <sup>2</sup>
3.1	salle de bains	5,80m <sup>2</sup>
3.3	w.c.	2,00m <sup>2</sup>
4.1	hall	4,75m <sup>2</sup>
4.2	couloir	6,10m <sup>2</sup>
5.1	technique	1,00m <sup>2</sup>
5.2	débarras	2,55m <sup>2</sup>
6.2	loggia	9,05m <sup>2</sup>

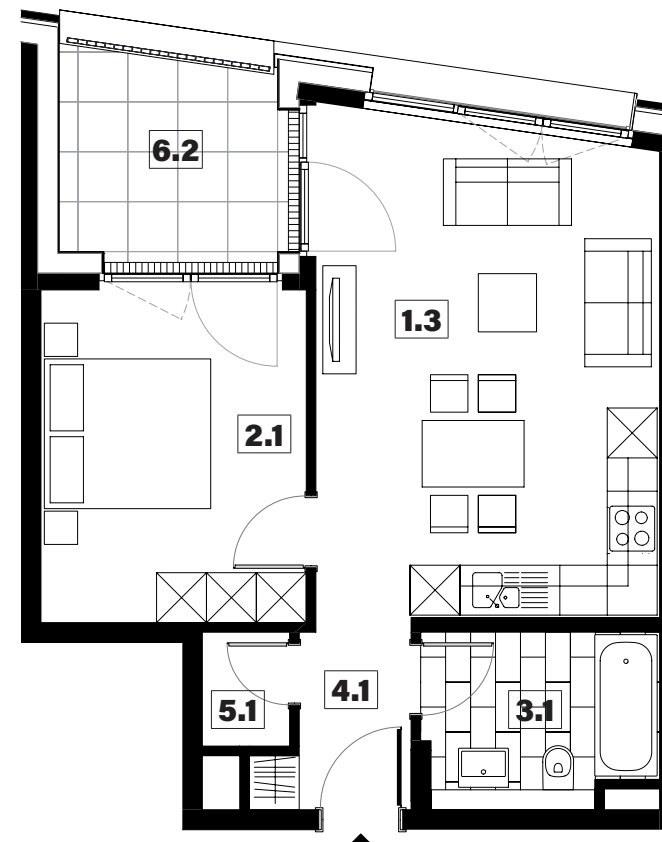
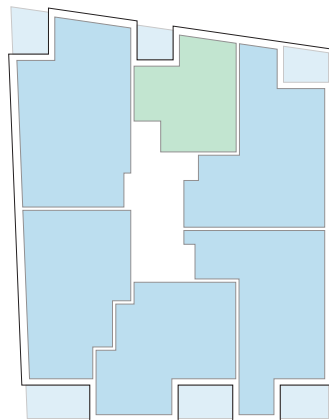
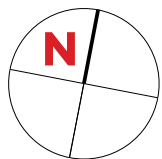
surface habitable

**94,10m<sup>2</sup>**



# APPARTEMENT TYPE

# 039



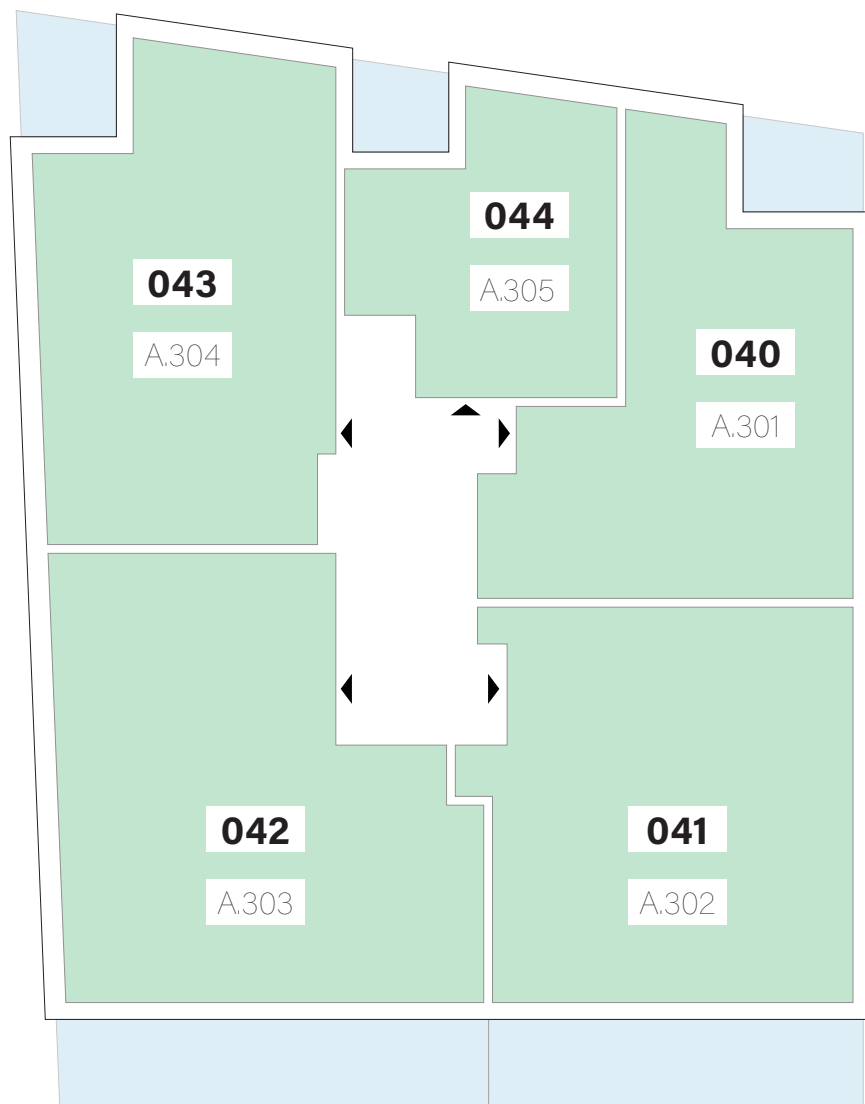
1.3	séjour/cuisine	24,40m <sup>2</sup>
2.1	chambre	12,75m <sup>2</sup>
3.1	salle de bains	5,75m <sup>2</sup>
4.1	hall	3,45m <sup>2</sup>
5.1	technique	1,40m <sup>2</sup>
6.2	loggia	6,65m <sup>2</sup>

surface habitable

**47,75m<sup>2</sup>**

# APPARTEMENTS

## 3<sup>ème</sup> ÉTAGE



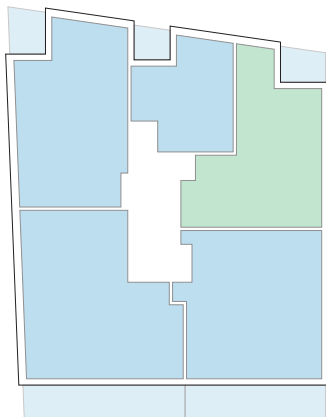
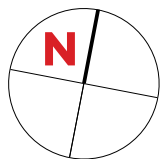
Type	Surface Utile	surface terrasse
<b>040</b>	88,45m <sup>2</sup>	8,30m <sup>2</sup>
<b>041</b>	106,16m <sup>2</sup>	25,60m <sup>2</sup>
<b>042</b>	119,18m <sup>2</sup>	29,35m <sup>2</sup>
<b>043</b>	99,42m <sup>2</sup>	9,05m <sup>2</sup>
<b>044</b>	49,05m <sup>2</sup>	6,65m <sup>2</sup>

- les surfaces inscrites dans ce tableau peuvent subir de légères modifications dues aux nécessités techniques de la construction.
- surface utile = surface calculée à l'intérieur des murs extérieurs.



APPARTEMENT TYPE

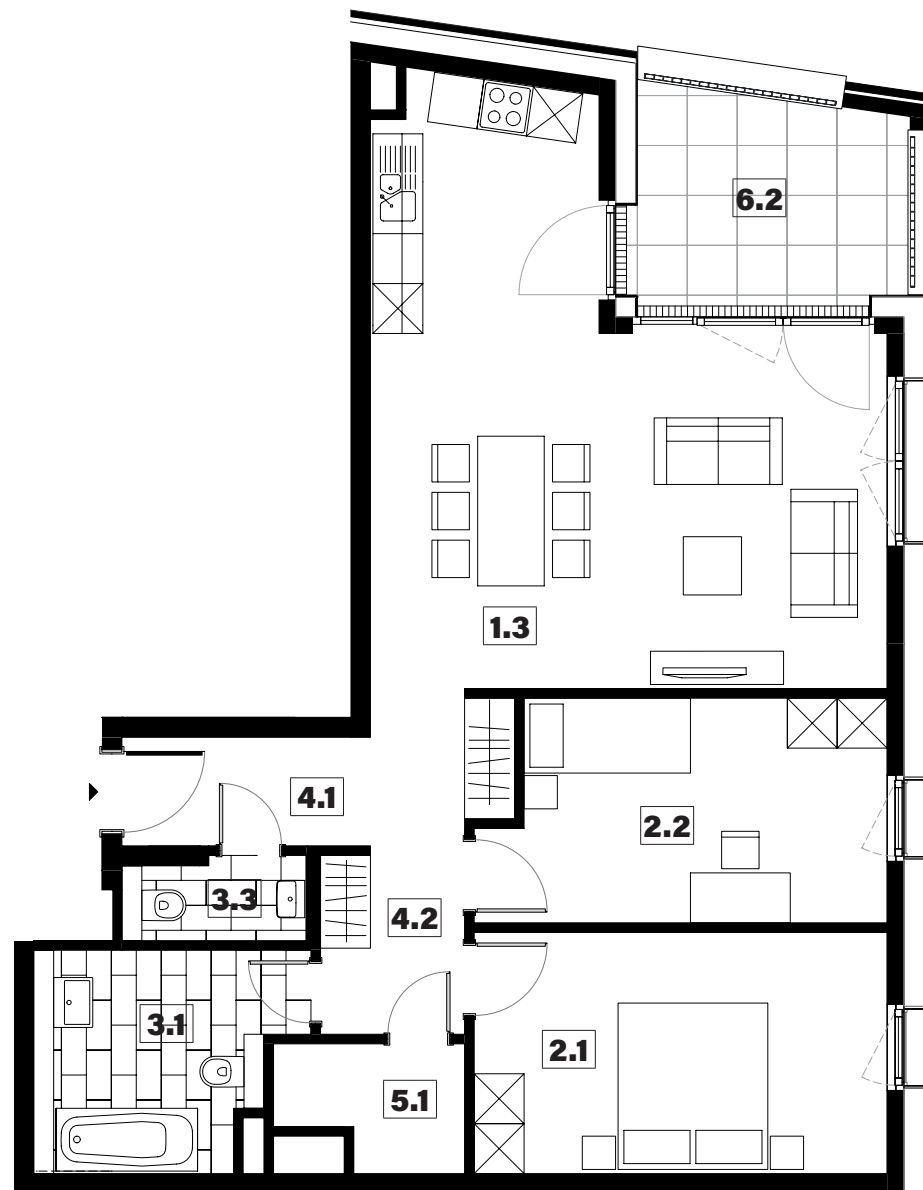
040



1.3	séjour/cuisine	34,65m <sup>2</sup>
2.1	chambre	14,40m <sup>2</sup>
2.2	chambre	12,45m <sup>2</sup>
3.1	salle de bains	7,70m <sup>2</sup>
3.3	w.c.	2,10m <sup>2</sup>
4.1	hall	3,90m <sup>2</sup>
4.2	couloir	6,85m <sup>2</sup>
5.1	technique	3,00m <sup>2</sup>
6.2	loggia	8,30m <sup>2</sup>

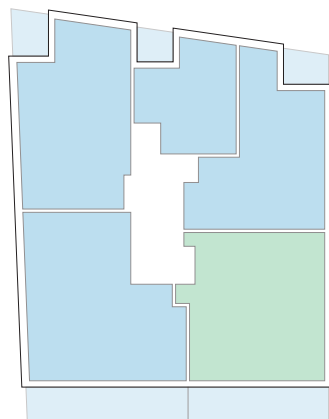
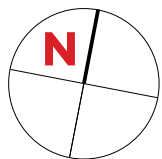
surface habitable

**85,05m<sup>2</sup>**



APPARTEMENT TYPE

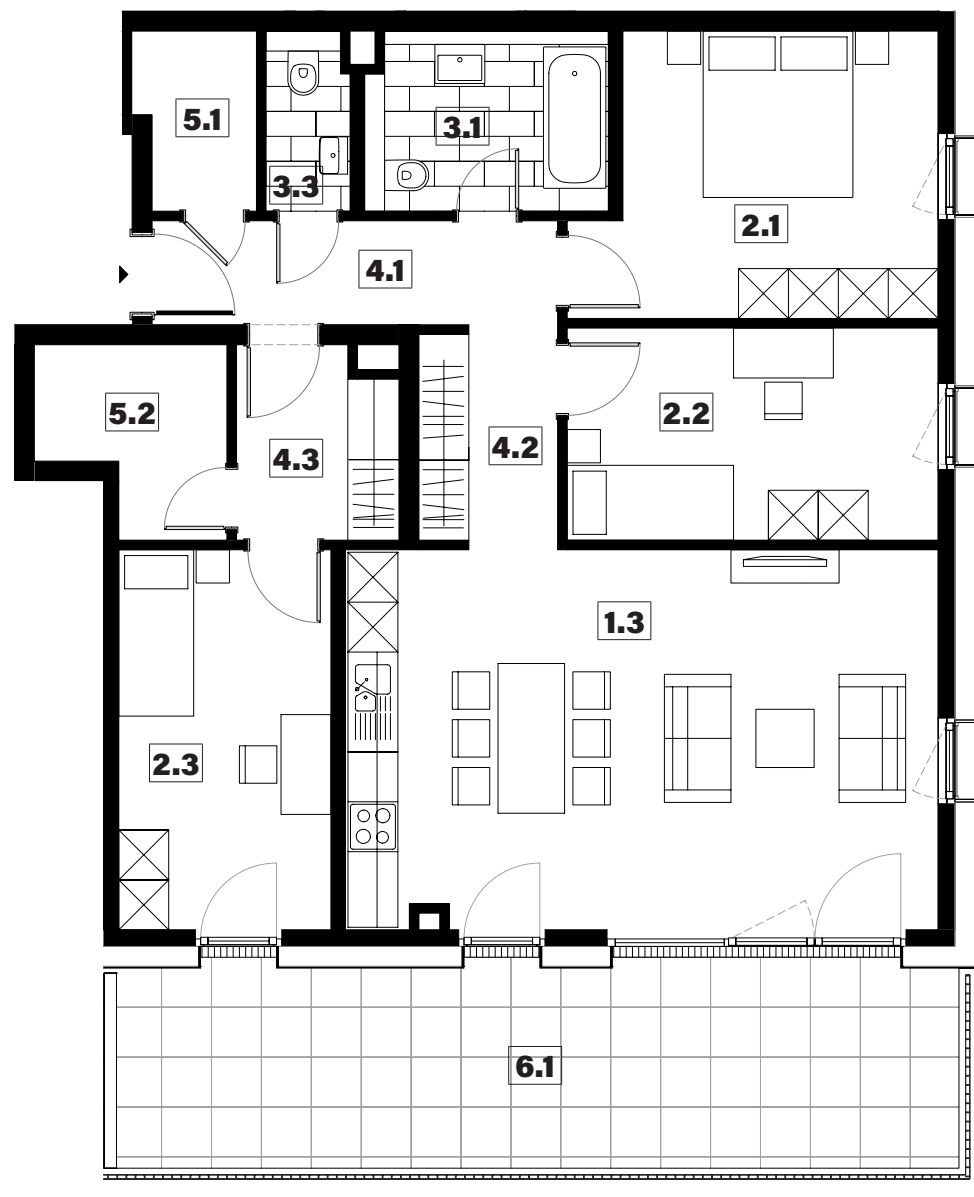
041



1.3	séjour/cuisine	32,40m <sup>2</sup>
2.1	chambre	13,85m <sup>2</sup>
2.2	chambre	11,37m <sup>2</sup>
2.3	chambre	11,65m <sup>2</sup>
3.1	salle de bains	6,20m <sup>2</sup>
3.3	w.c.	2,10m <sup>2</sup>
4.1	hall	4,75m <sup>2</sup>
4.2	couloir	5,70m <sup>2</sup>
4.3	couloir	4,30m <sup>2</sup>
5.1	technique	2,95m <sup>2</sup>
5.2	débarras	4,45m <sup>2</sup>
6.1	terrasse	25,60m <sup>2</sup>

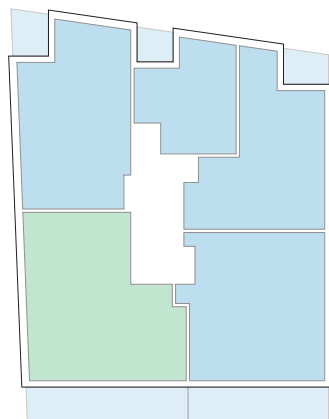
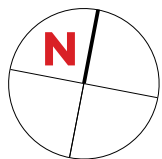
surface habitable

**99,72m<sup>2</sup>**



APPARTEMENT TYPE

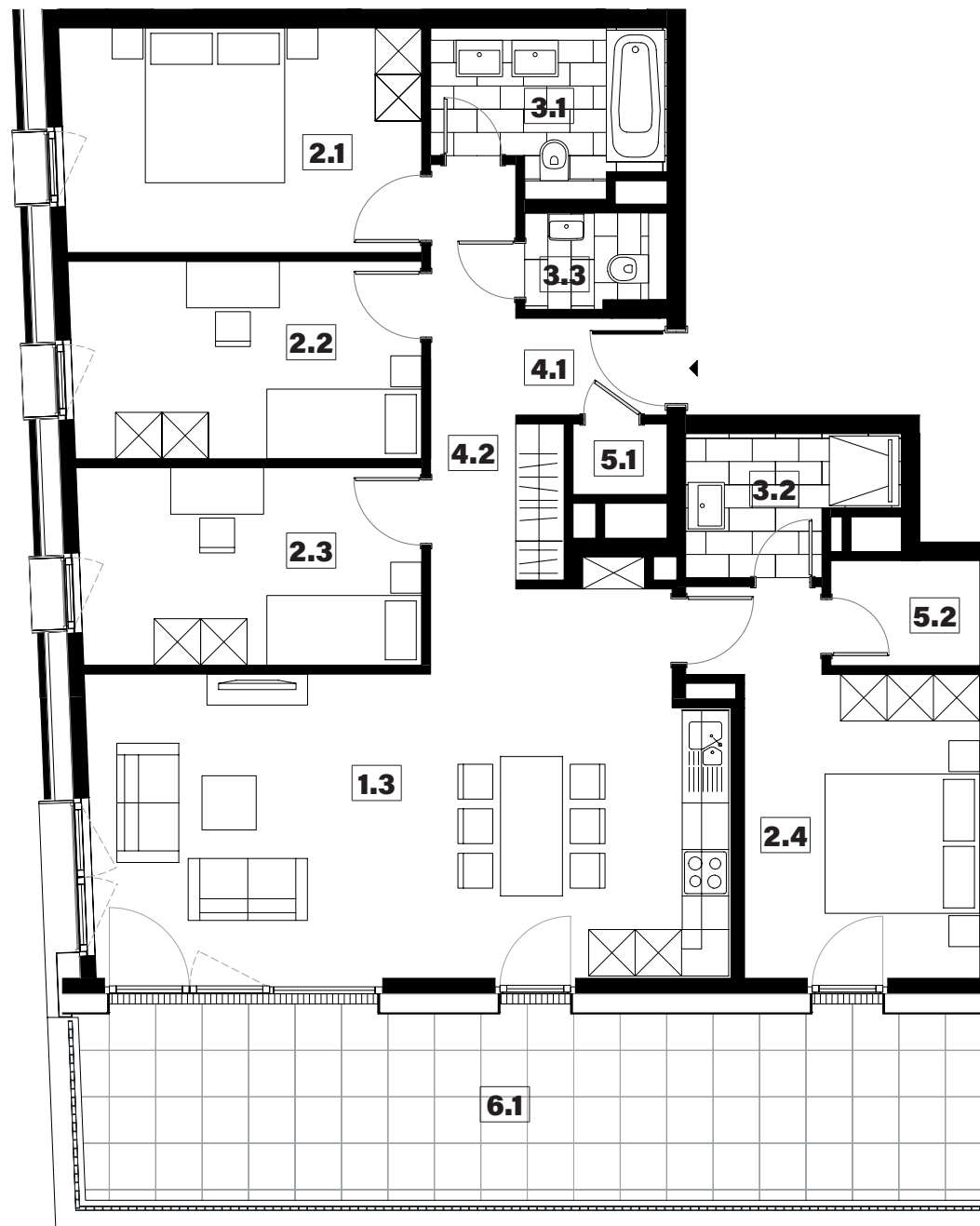
042



1.3	séjour/cuisine	32,20m <sup>2</sup>
2.1	chambre	13,40m <sup>2</sup>
2.2	chambre	11,50m <sup>2</sup>
2.3	chambre	11,25m <sup>2</sup>
2.4	chambre	13,90m <sup>2</sup>
3.1	salle de bains	5,80m <sup>2</sup>
3.2	salle de douche	4,26m <sup>2</sup>
3.3	w.c.	2,10m <sup>2</sup>
4.1	hall	2,40m <sup>2</sup>
4.2	couloir	11,05m <sup>2</sup>
5.1	technique	1,10m <sup>2</sup>
5.2	débarras	2,60m <sup>2</sup>
6.1	terrasse	29,35m <sup>2</sup>

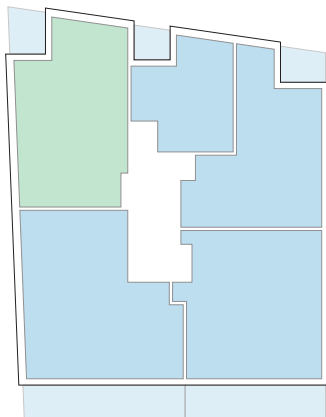
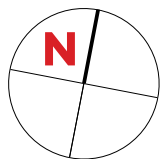
surface habitable

**111,56m<sup>2</sup>**



APPARTEMENT TYPE

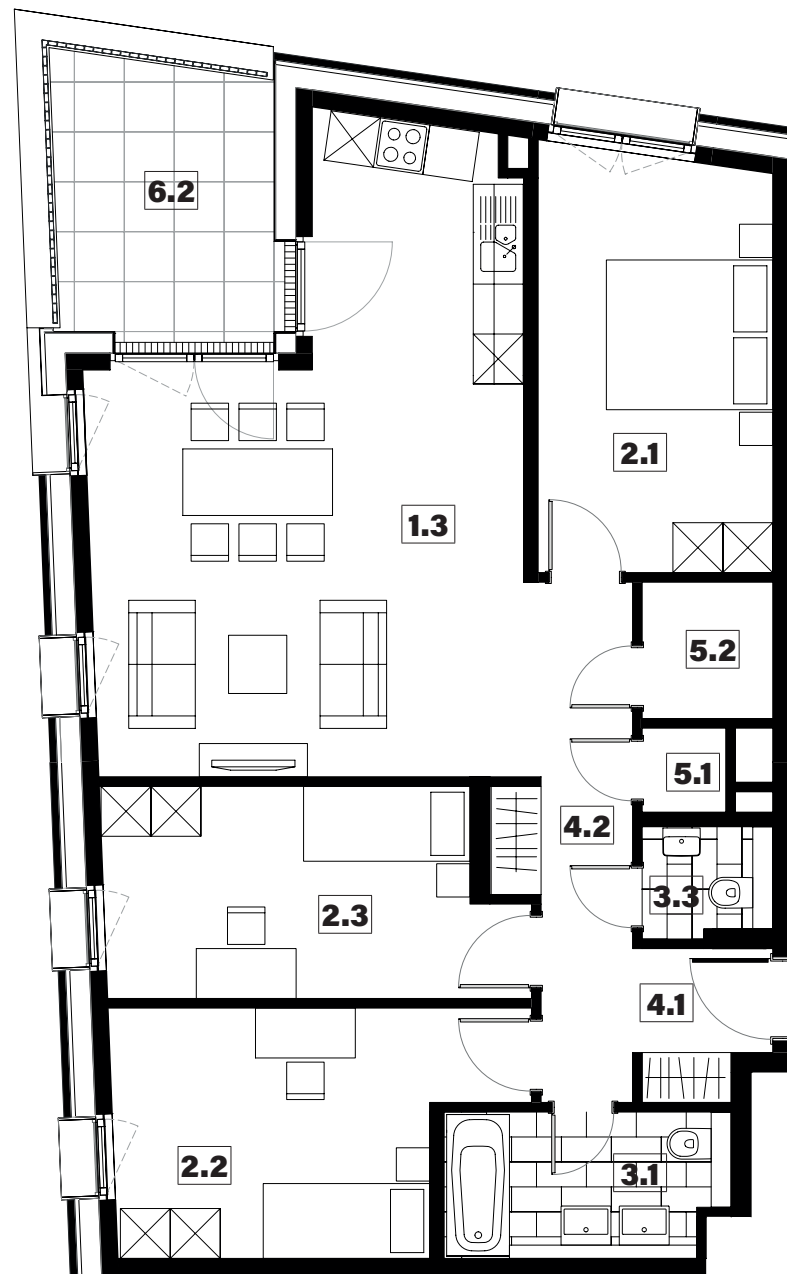
043

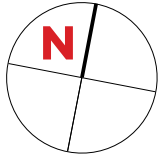


1.3	séjour/cuisine	32,85m <sup>2</sup>
2.1	chambre	14,10m <sup>2</sup>
2.2	chambre	12,85m <sup>2</sup>
2.3	chambre	12,05m <sup>2</sup>
3.1	salle de bains	5,80m <sup>2</sup>
3.3	w.c.	2,00m <sup>2</sup>
4.1	hall	4,75m <sup>2</sup>
4.2	couloir	6,10m <sup>2</sup>
5.1	technique	1,00m <sup>2</sup>
5.2	débarras	2,55m <sup>2</sup>
6.2	loggia	9,05m <sup>2</sup>

surface habitable

**94,05m<sup>2</sup>**





# PLAN DE SITUATION

