

Résidence ALBI



Image non contractuelle

APPARTEMENTS

REZ-DE-CHAUSSÉE

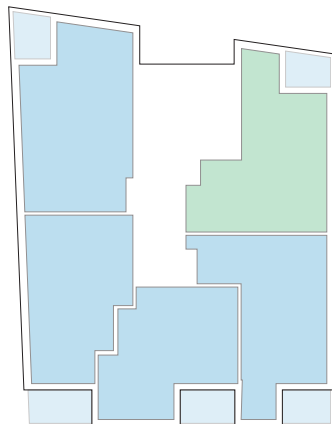
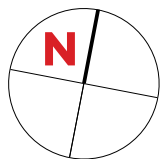


Type	Surface Utile	surface terrasse
023	88,45m ²	8,30m ²
024	85,18m ²	9,05m ²
025	76,29m ²	10,10m ²
026	81,52m ²	11,65m ²
027	99,33m ²	9,05m ²

- les surfaces inscrites dans ce tableau peuvent subir de légères modifications dues aux nécessités techniques de la construction.
- surface utile = surface calculée à l'intérieur des murs extérieurs.

APPARTEMENT TYPE

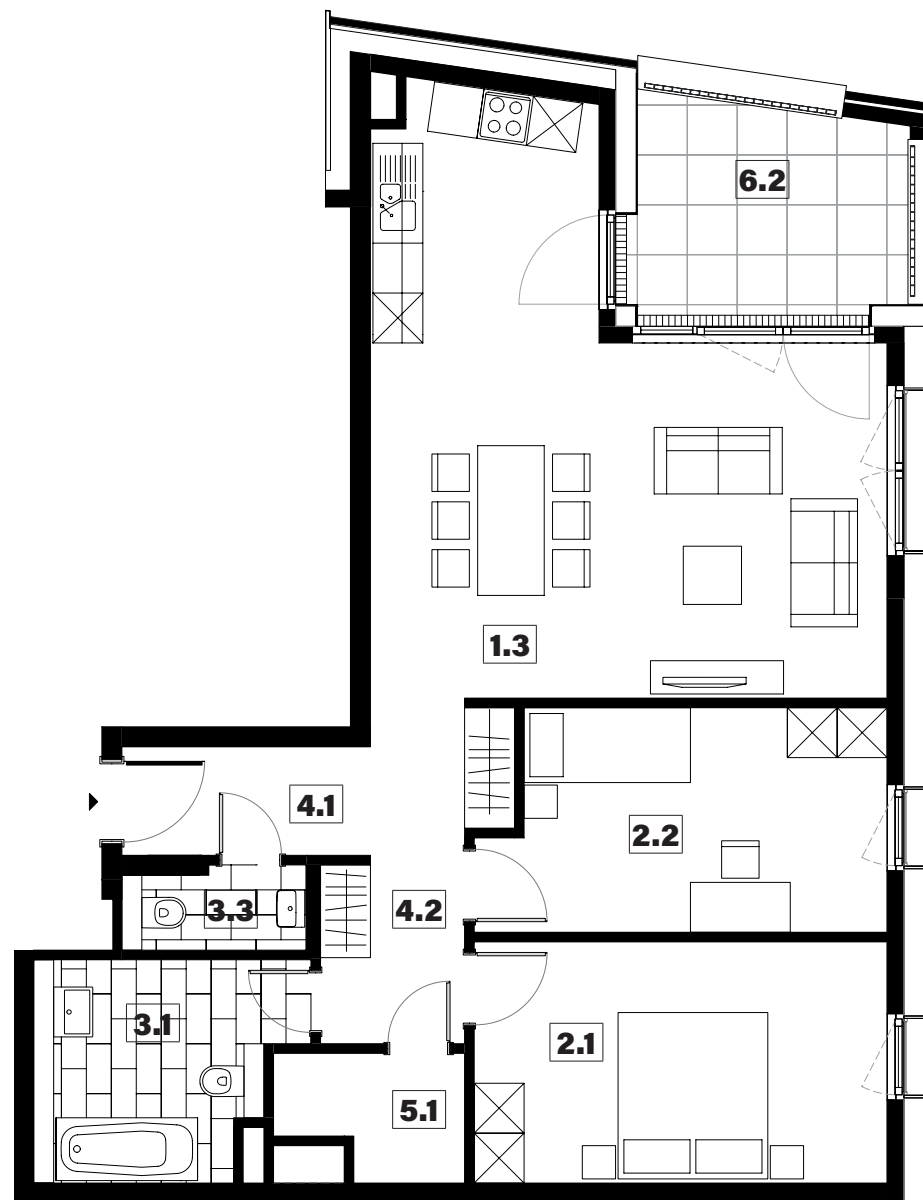
023



1.3	séjour/cuisine	34,65m ²
2.1	chambre	14,40m ²
2.2	chambre	12,45m ²
3.1	salle de bains	7,70m ²
3.3	w.c.	2,10m ²
4.1	hall	3,90m ²
4.2	couloir	6,85m ²
5.1	technique	3,00m ²
6.2	loggia	8,30m ²

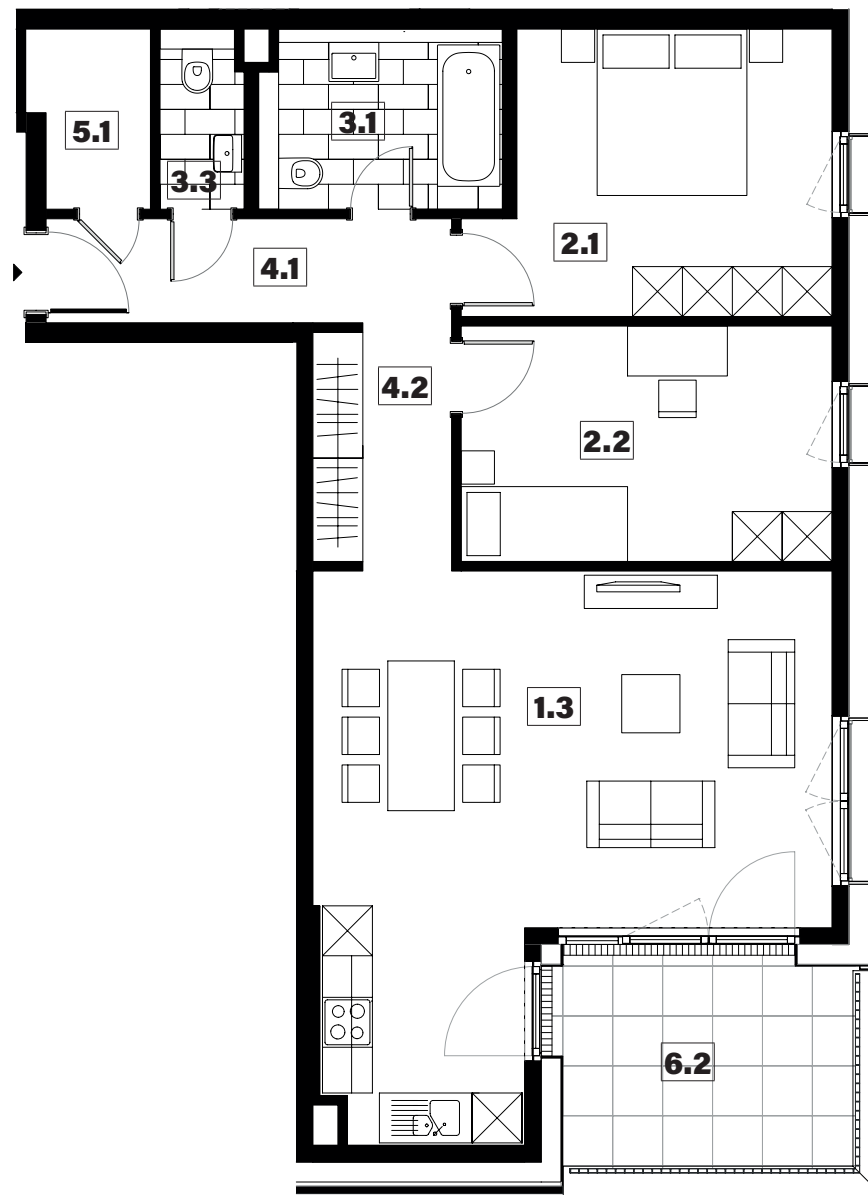
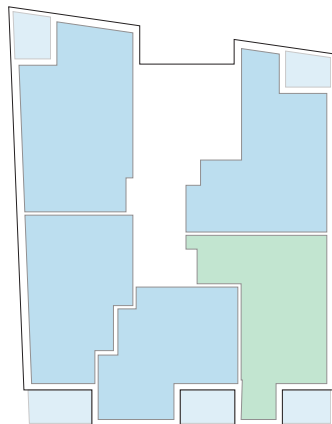
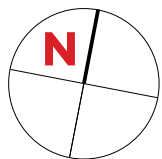
surface habitable

85,05m²



APARTEMENT TYPE

024



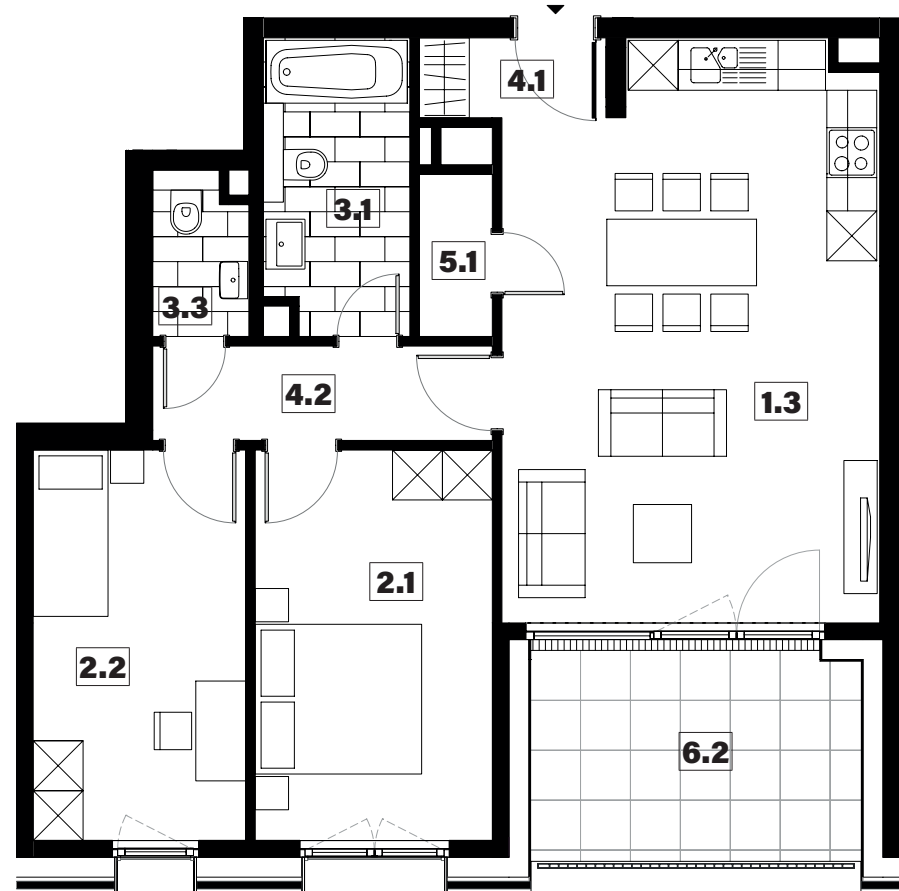
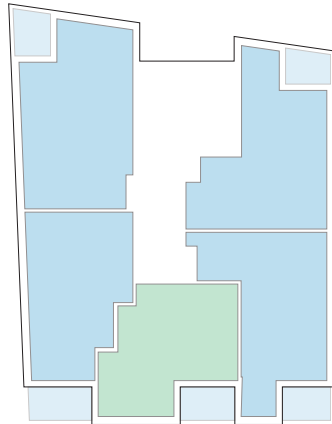
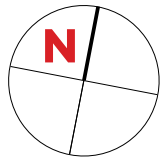
1.3	séjour/cuisine	33,15m ²
2.1	chambre	13,85m ²
2.2	chambre	12,60m ²
3.1	salle de bains	6,20m ²
3.3	w.c.	2,10m ²
4.1	hall	4,75m ²
4.2	couloir	6,15m ²
5.1	technique	2,95m ²
6.2	loggia	9,05m ²

surface habitable

81,75m²

APARTEMENT TYPE

025



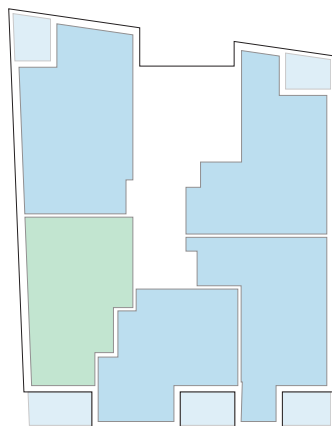
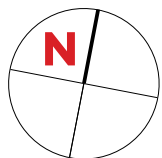
1.3	séjour/cuisine	30,25m ²
2.1	chambre	13,35m ²
2.2	chambre	12,00m ²
3.1	salle de bains	6,10m ²
3.3	w.c.	2,15m ²
4.1	hall	2,15m ²
4.2	couloir	4,60m ²
5.1	technique	1,70m ²
6.2	loggia	10,10m ²

surface habitable

72,30m²

APPARTEMENT TYPE

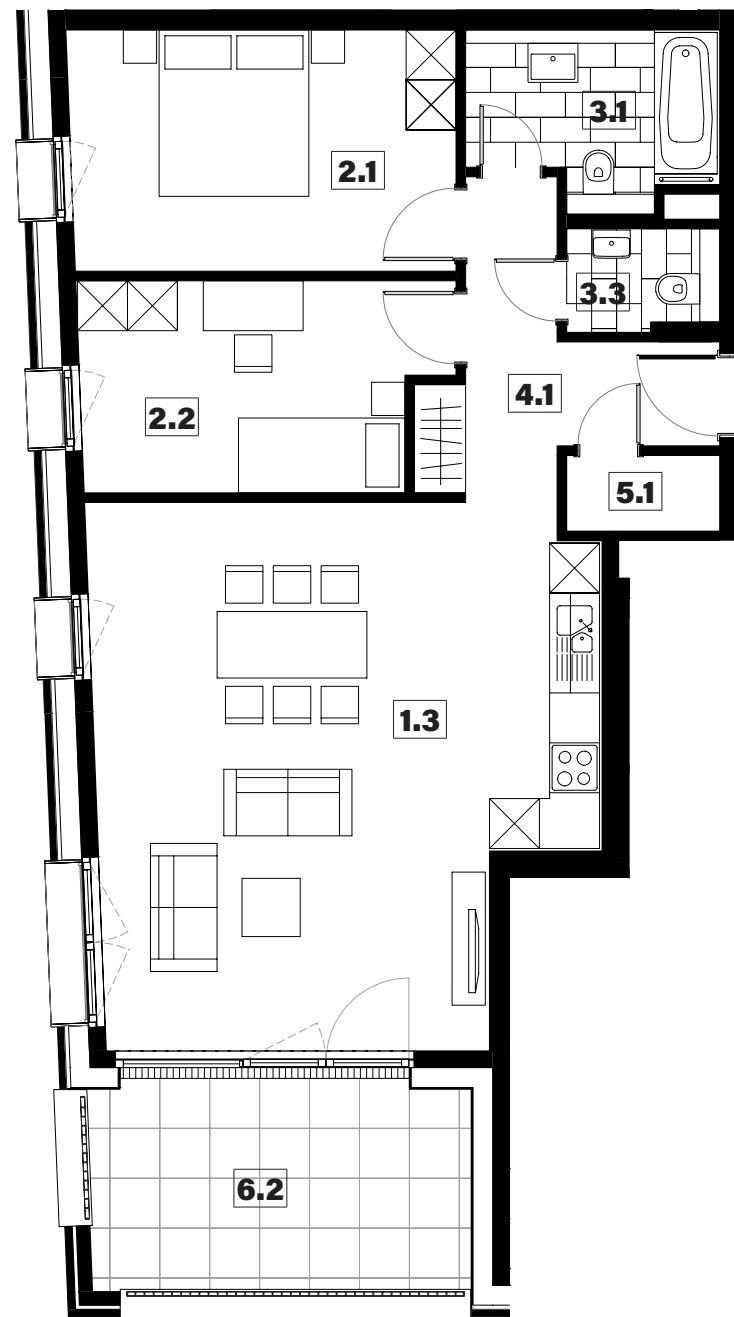
026



1.3	séjour/cuisine	37,10m ²
2.1	chambre	13,40m ²
2.2	chambre	10,65m ²
3.1	salle de bains	5,80m ²
3.3	w.c.	2,15m ²
4.1	hall	7,55m ²
5.1	technique	1,65m ²
6.2	loggia	11,65m ²

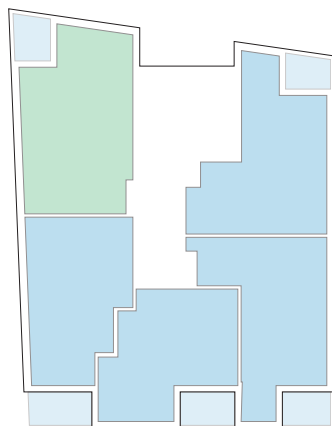
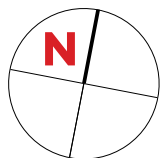
surface habitable

78,30m²



APPARTEMENT TYPE

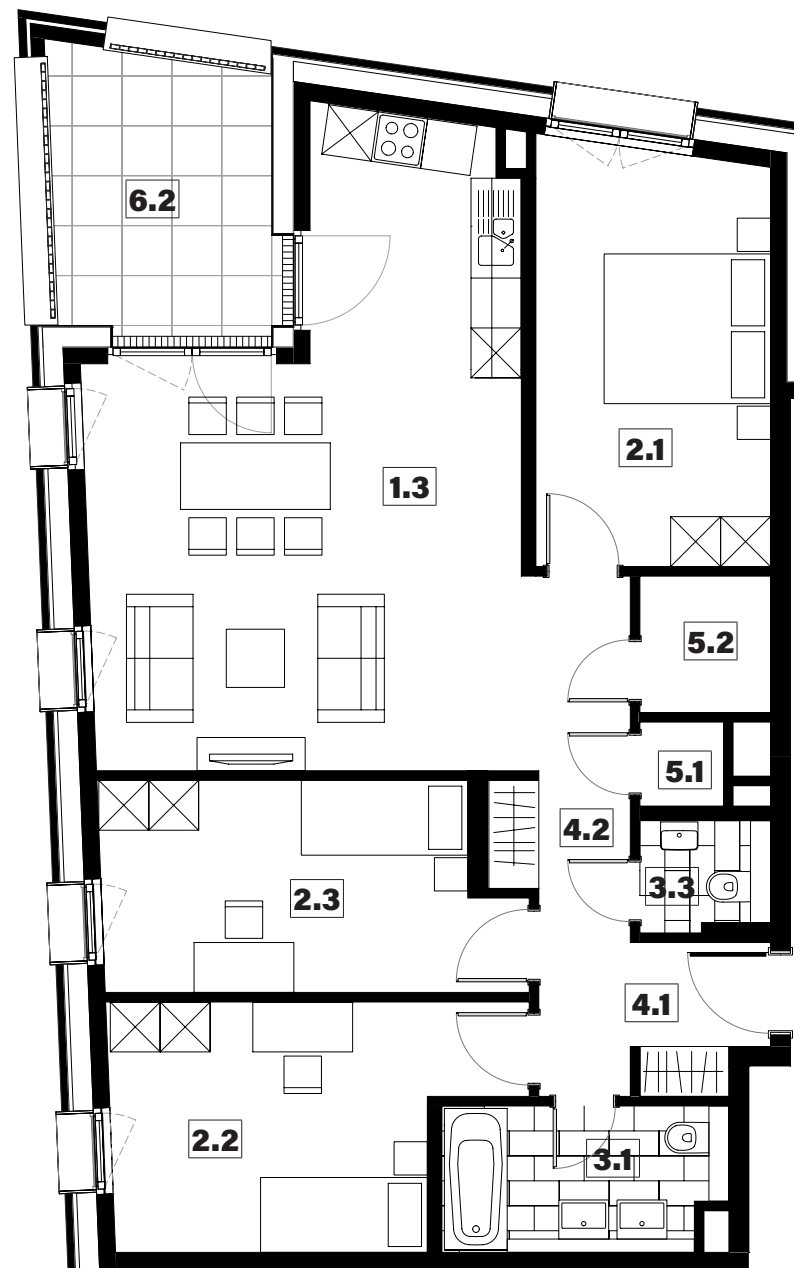
027



1.3	séjour/cuisine	32,85m ²
2.1	chambre	14,10m ²
2.2	chambre	12,85m ²
2.3	chambre	12,05m ²
3.1	salle de bains	5,80m ²
3.3	w.c.	2,00m ²
4.1	hall	4,75m ²
4.2	couloir	6,10m ²
5.1	technique	1,00m ²
5.2	débarras	2,55m ²
6.2	loggia	9,05m ²

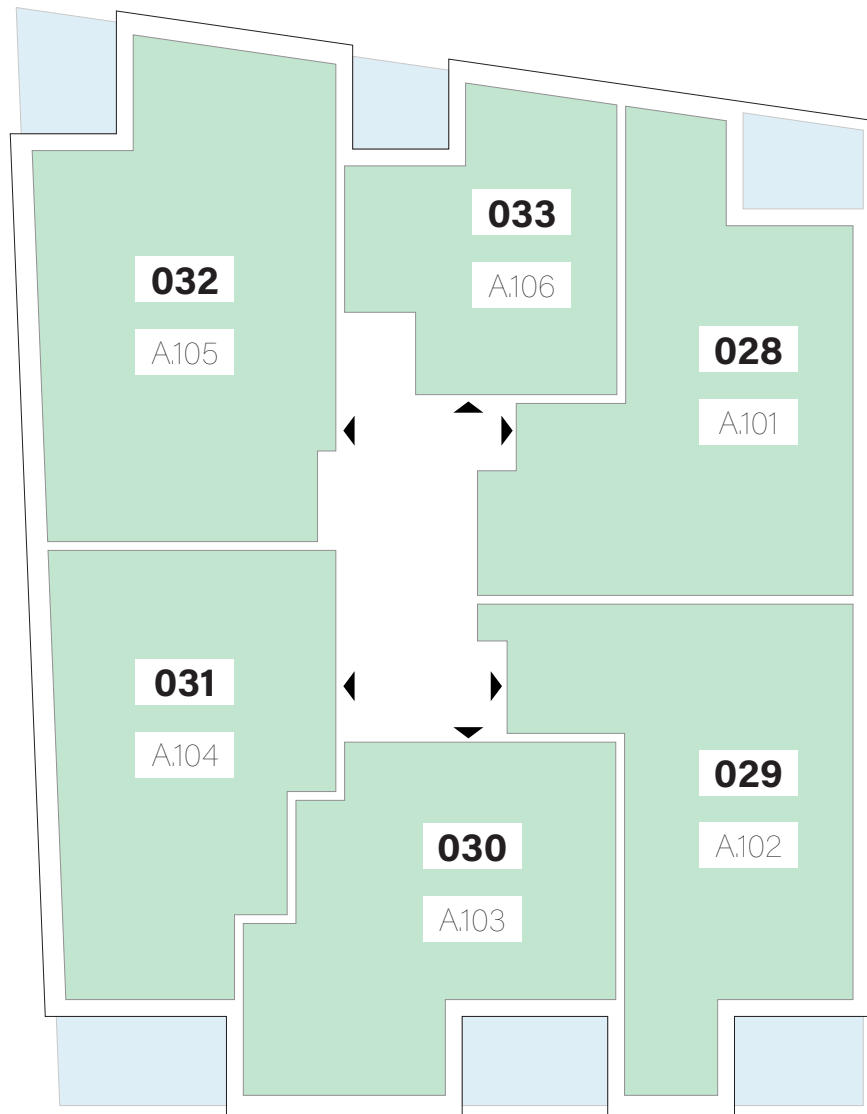
surface habitable

94,05m²



APPARTEMENTS

1^{er} ÉTAGE

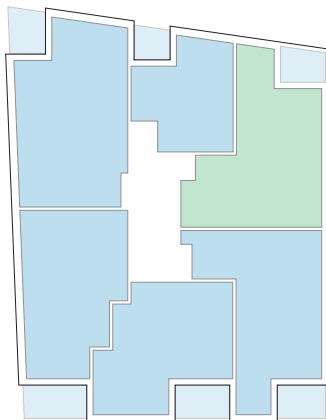
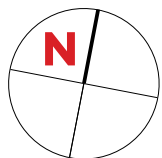


Type	Surface Utile	surface terrasse
028	88,45m ²	8,30m ²
029	85,18m ²	9,05m ²
030	76,29m ²	10,10m ²
031	81,52m ²	11,65m ²
032	99,42m ²	9,05m ²
033	49,52m ²	6,65m ²

- les surfaces inscrites dans ce tableau peuvent subir de légères modifications dues aux nécessités techniques de la construction.
- surface utile = surface calculée à l'intérieur des murs extérieurs.

APARTEMENT TYPE

028



1.3	séjour/cuisine	34,65m ²
2.1	chambre	14,40m ²
2.2	chambre	12,45m ²
3.1	salle de bains	7,70m ²
3.3	w.c.	2,10m ²
4.1	hall	3,90m ²
4.2	couloir	6,85m ²
5.1	technique	3,00m ²
6.2	loggia	8,30m ²

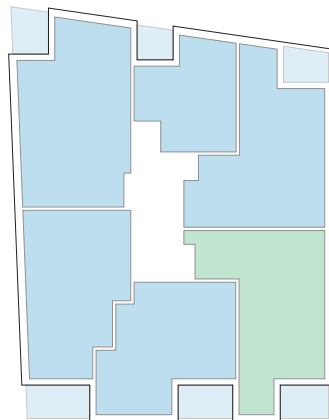
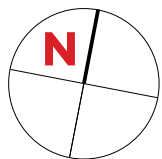
surface habitable

85,05m²



APPARTEMENT TYPE

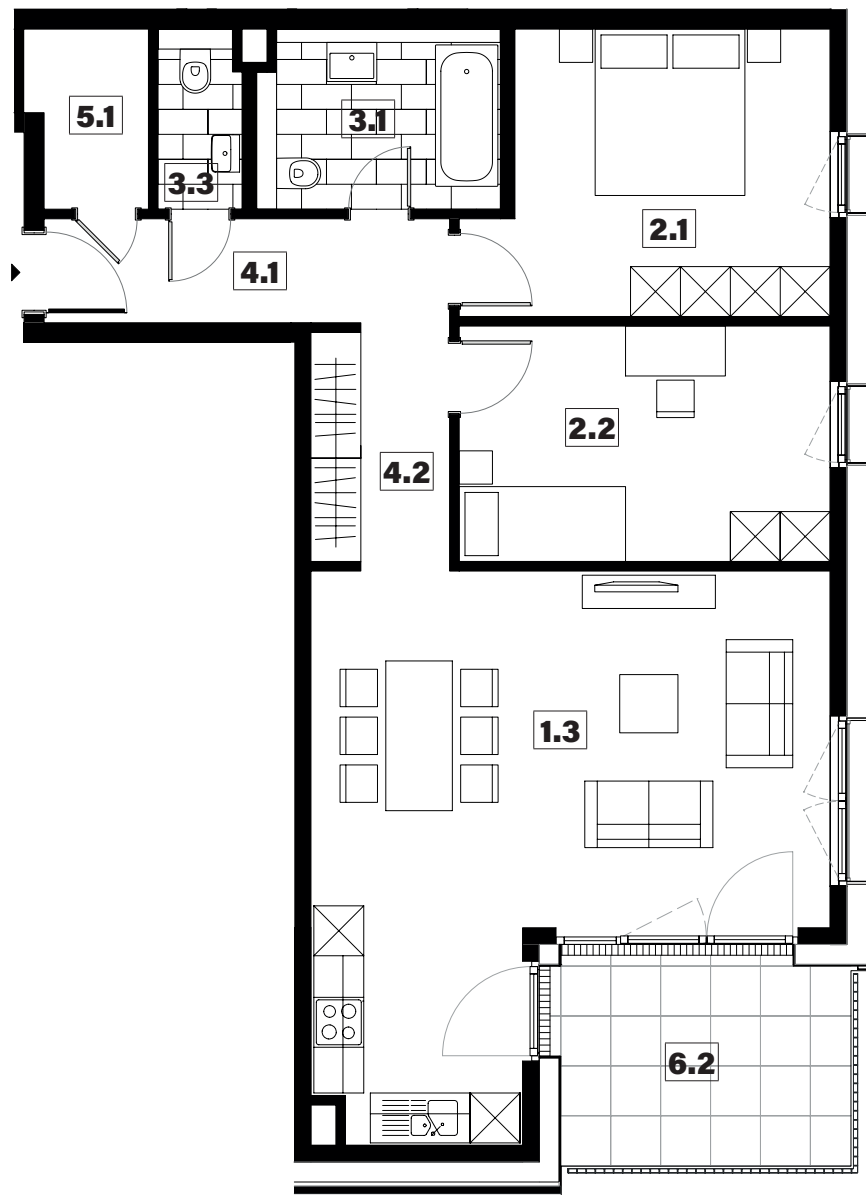
029



1.3	séjour/cuisine	33,15m ²
2.1	chambre	13,85m ²
2.2	chambre	12,60m ²
3.1	salle de bains	6,20m ²
3.3	w.c.	2,10m ²
4.1	hall	4,75m ²
4.2	couloir	6,15m ²
5.1	technique	2,95m ²
6.2	loggia	9,05m ²

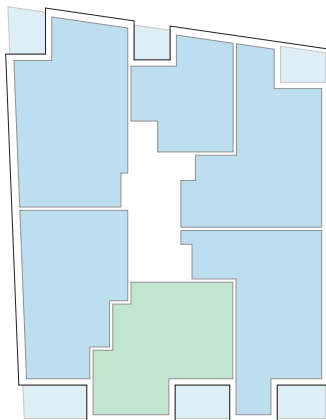
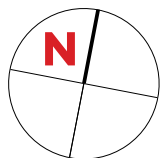
surface habitable

81,75m²



APPARTEMENT TYPE

030



1.3	séjour/cuisine	30,25m ²
2.1	chambre	13,35m ²
2.2	chambre	12,00m ²
3.1	salle de bains	6,10m ²
3.3	w.c.	2,15m ²
4.1	hall	2,15m ²
4.2	couloir	4,60m ²
5.1	technique	1,70m ²
6.2	loggia	10,10m ²

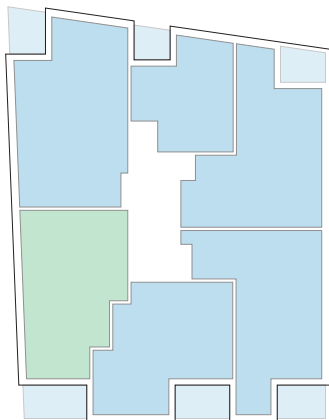
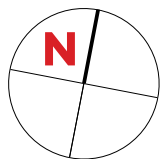
surface habitable

72,30m²



APPARTEMENT TYPE

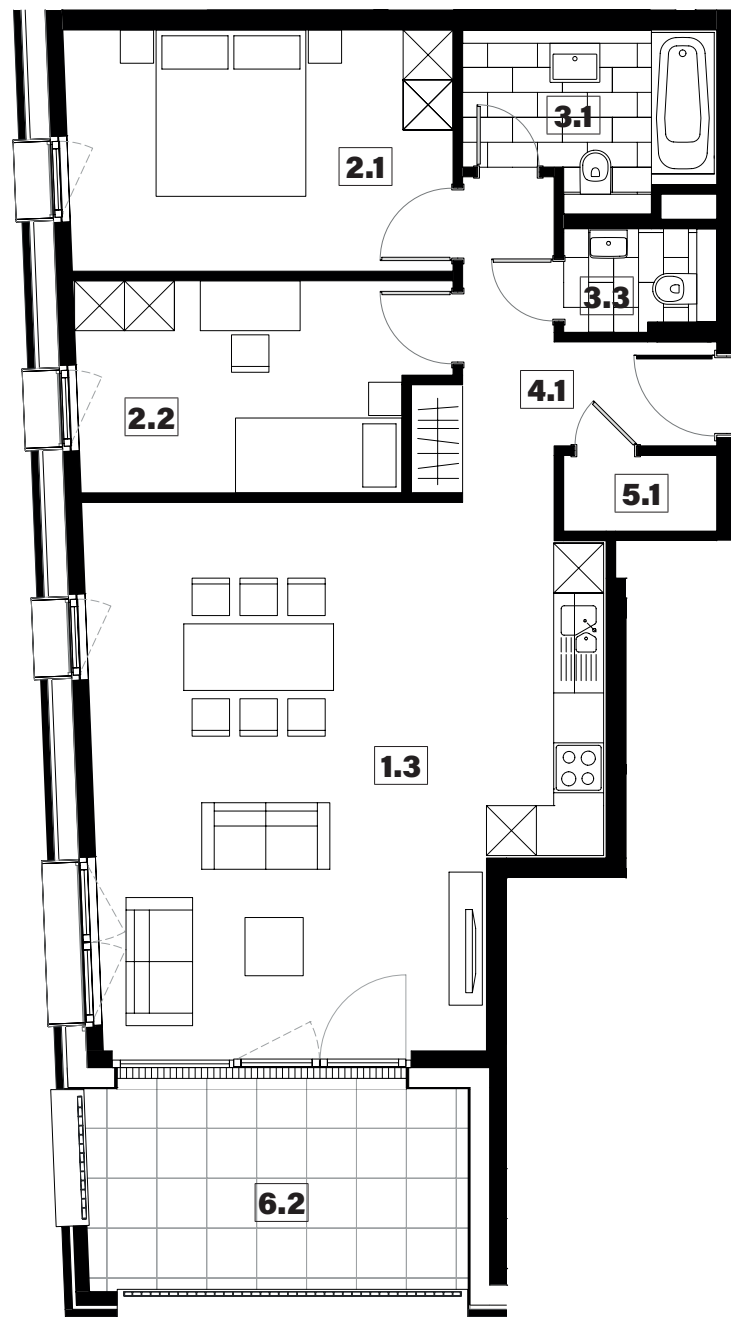
031



1.3	séjour/cuisine	37,10m ²
2.1	chambre	13,40m ²
2.2	chambre	10,65m ²
3.1	salle de bains	5,80m ²
3.3	w.c.	2,15m ²
4.1	hall	7,55m ²
5.1	technique	1,65m ²
6.2	loggia	11,65m ²

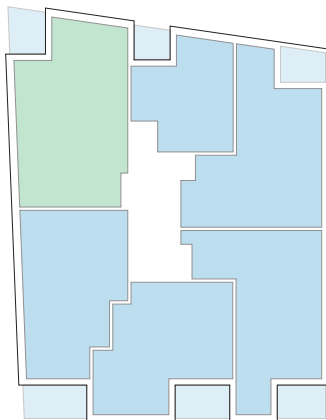
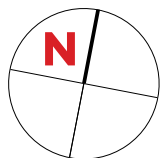
surface habitable

78,30m²



APPARTEMENT TYPE

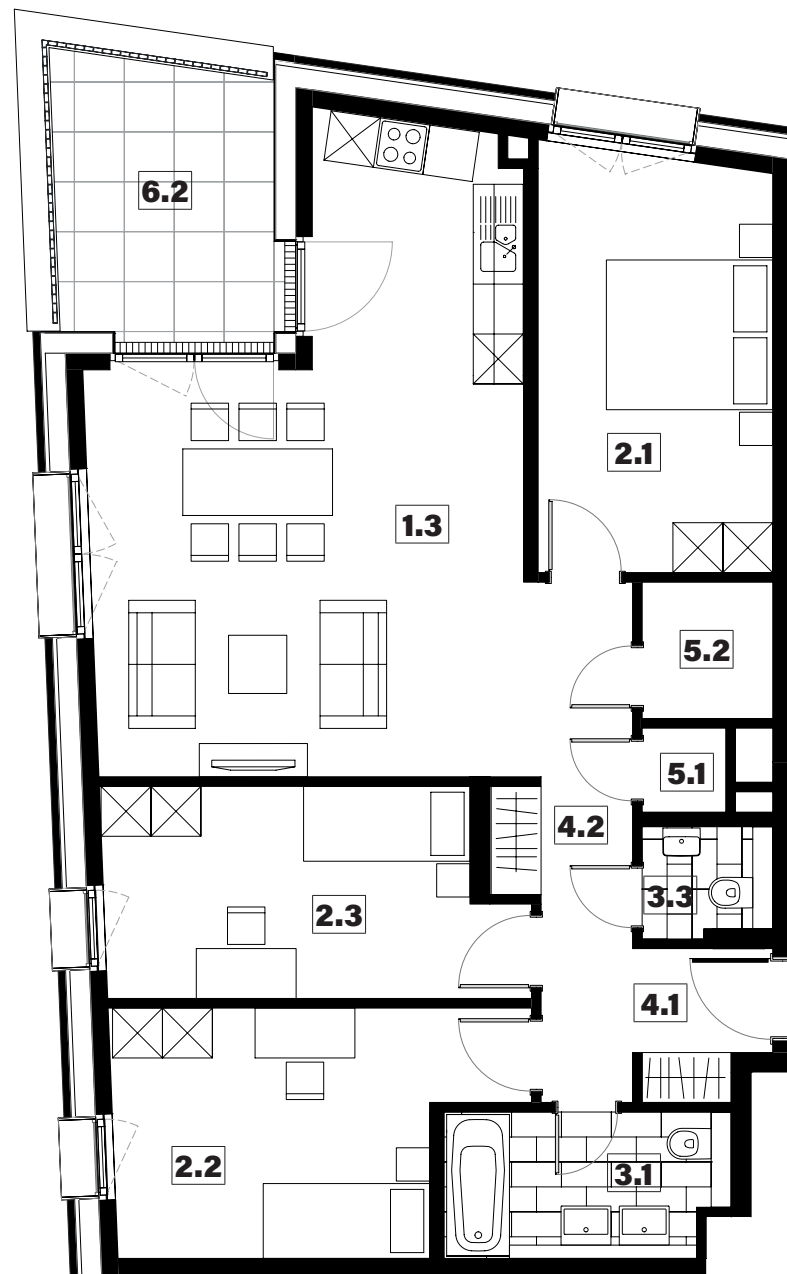
032



1.3	séjour/cuisine	32,90m ²
2.1	chambre	14,10m ²
2.2	chambre	12,85m ²
2.3	chambre	12,05m ²
3.1	salle de bains	5,80m ²
3.3	w.c.	2,00m ²
4.1	hall	4,75m ²
4.2	couloir	6,10m ²
5.1	technique	1,00m ²
5.2	débarras	2,55m ²
6.2	loggia	9,05m ²

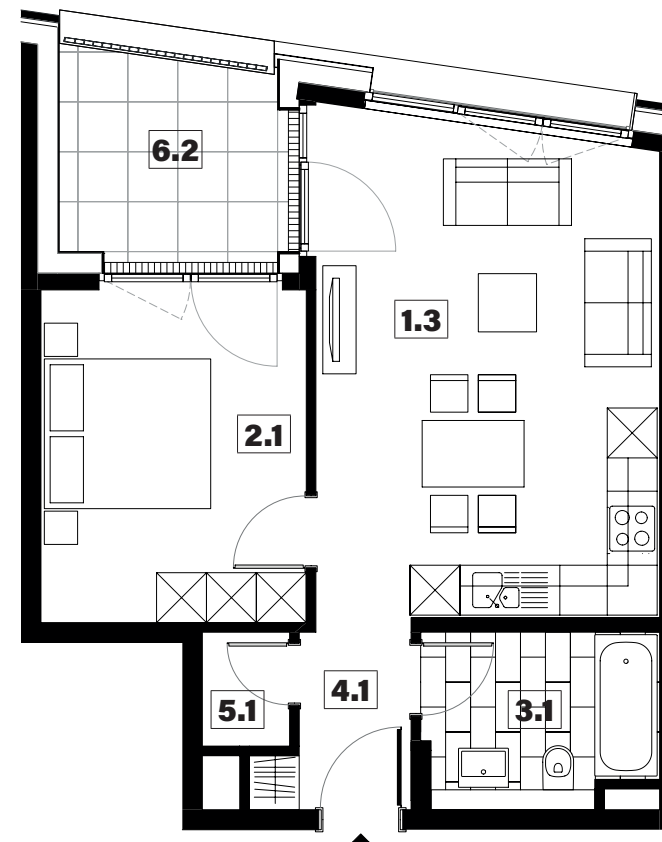
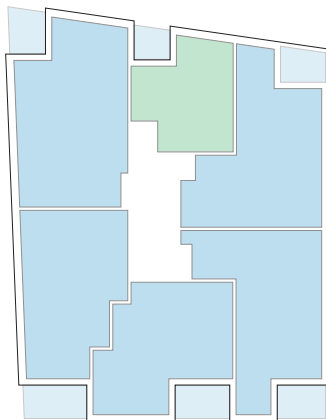
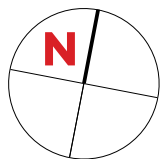
surface habitable

94,10m²



APPARTEMENT TYPE

033



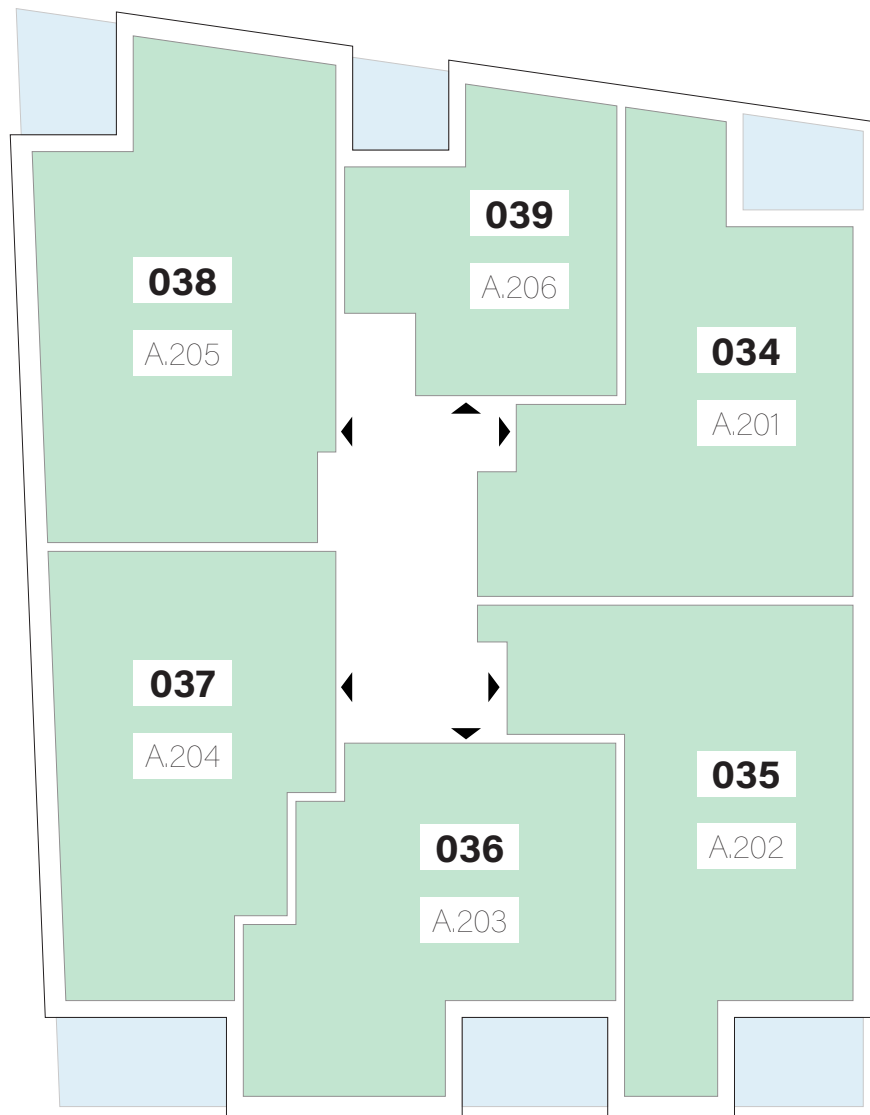
1.3	séjour/cuisine	24,40m ²
2.1	chambre	12,75m ²
3.1	salle de bains	5,75m ²
4.1	hall	3,45m ²
5.1	technique	1,40m ²
6.2	loggia	6,65m ²

surface habitable

47,75m²

APPARTEMENTS

2^{ème} ÉTAGE

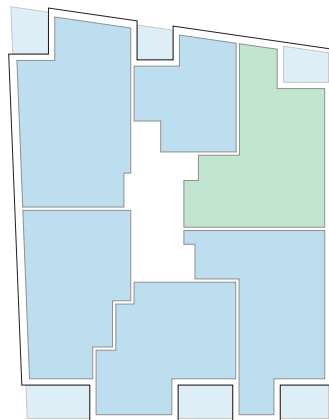
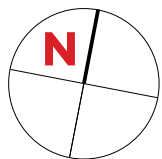


Type	Surface Utile	surface terrasse
034	88,45m ²	8,30m ²
035	85,18m ²	9,05m ²
036	76,29m ²	10,10m ²
037	81,52m ²	11,65m ²
038	99,42m ²	9,05m ²
039	49,52m ²	6,65m ²

- les surfaces inscrites dans ce tableau peuvent subir de légères modifications dues aux nécessités techniques de la construction.
- surface utile = surface calculée à l'intérieur des murs extérieurs.

APPARTEMENT TYPE

034



1.3	séjour/cuisine	34,65m ²
2.1	chambre	14,40m ²
2.2	chambre	12,45m ²
3.1	salle de bains	7,70m ²
3.3	w.c.	2,10m ²
4.1	hall	3,90m ²
4.2	couloir	6,85m ²
5.1	technique	3,00m ²
6.2	loggia	8,30m ²

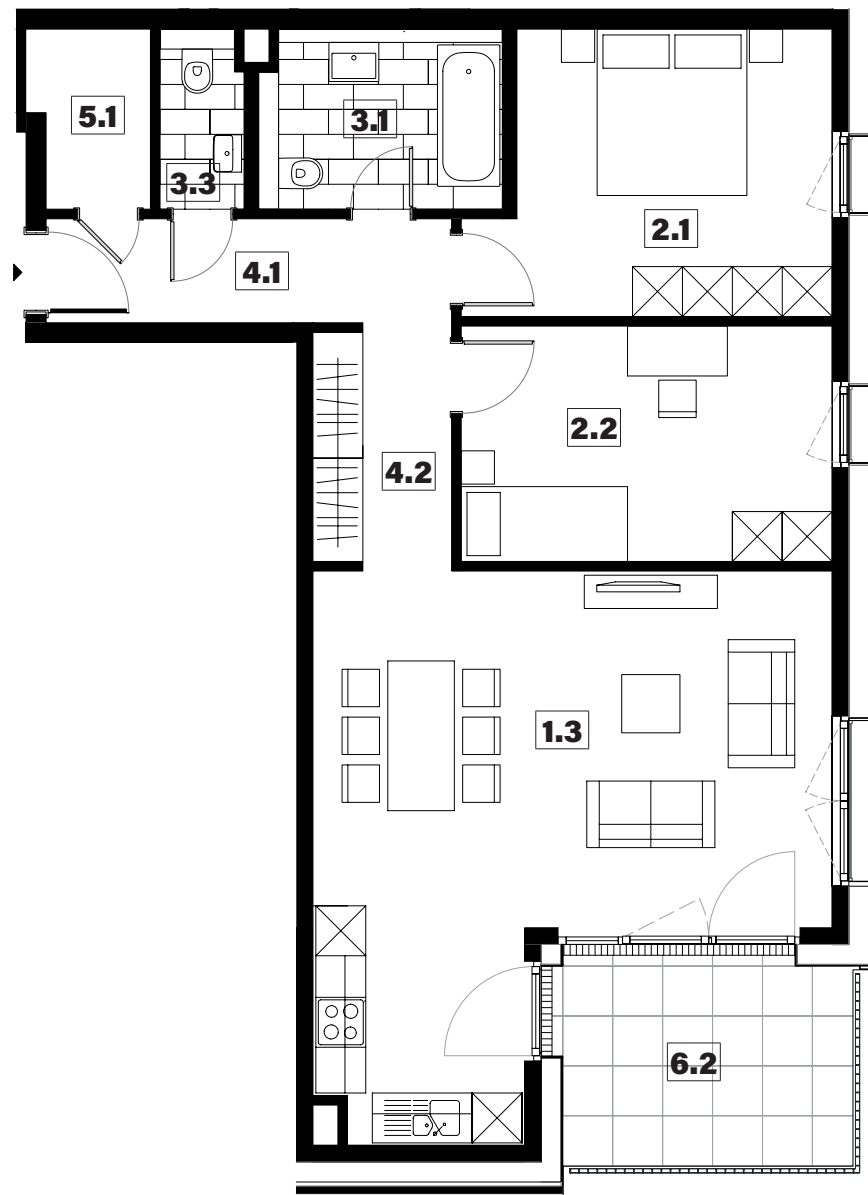
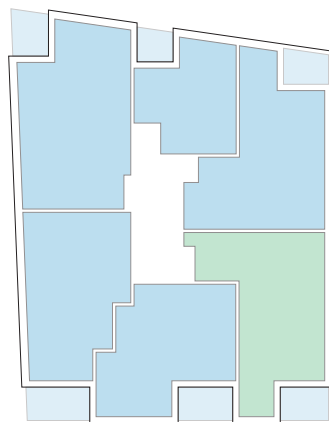
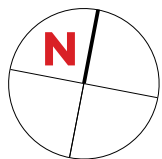
surface habitable

85,05m²



APPARTEMENT TYPE

035



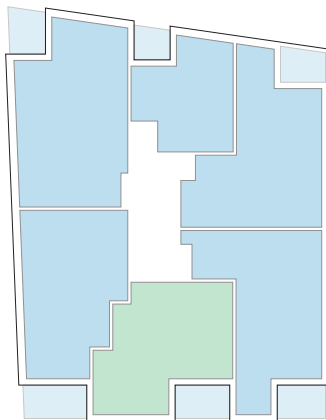
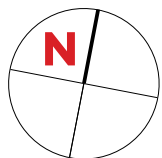
1.3	séjour/cuisine	33,15m ²
2.1	chambre	13,85m ²
2.2	chambre	12,60m ²
3.1	salle de bains	6,20m ²
3.3	w.c.	2,10m ²
4.1	hall	4,75m ²
4.2	couloir	6,15m ²
5.1	technique	2,95m ²
6.2	loggia	9,05m ²

surface habitable

81,75m²

APPARTEMENT TYPE

036



1.3	séjour/cuisine	30,25m ²
2.1	chambre	13,35m ²
2.2	chambre	12,00m ²
3.1	salle de bains	6,10m ²
3.3	w.c.	2,15m ²
4.1	hall	2,15m ²
4.2	couloir	4,60m ²
5.1	technique	1,70m ²
6.2	loggia	10,10m ²

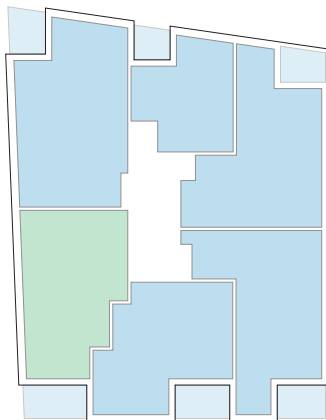
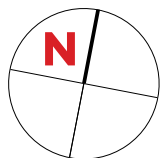
surface habitable

72,30m²



APPARTEMENT TYPE

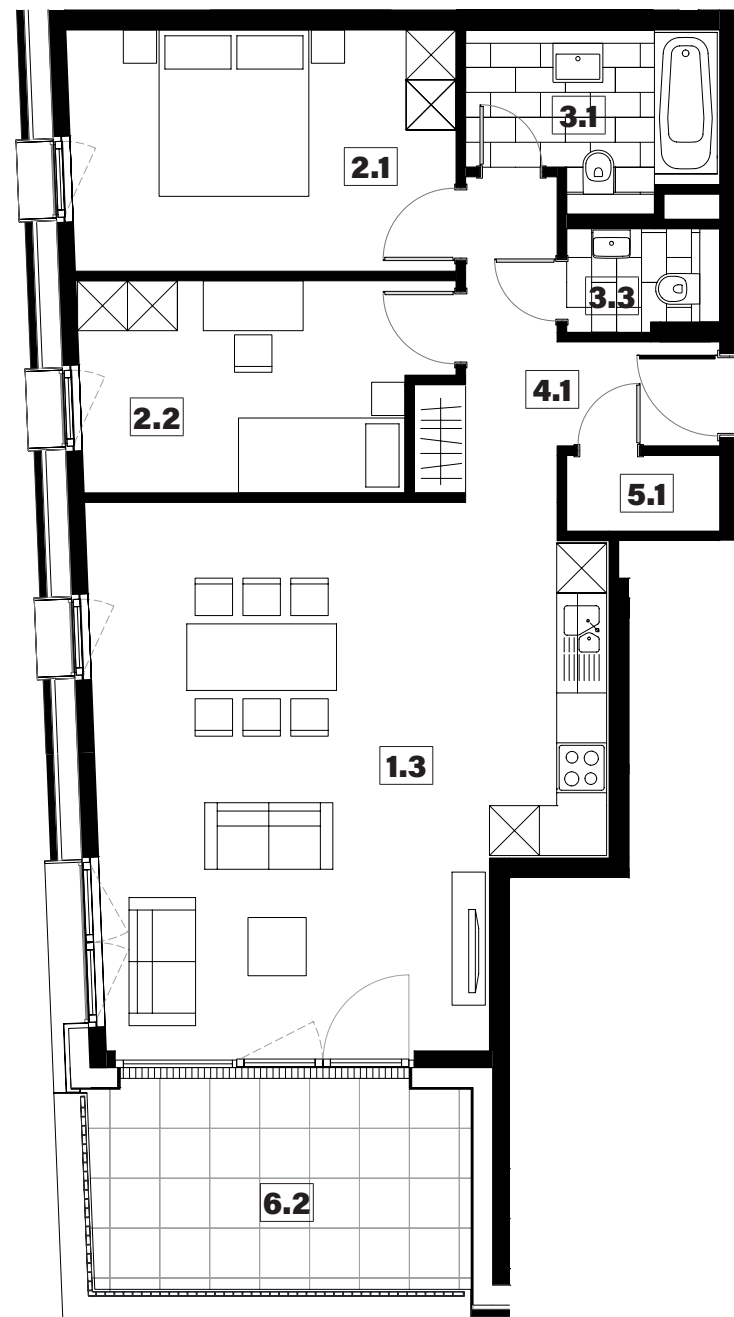
037



1.3	séjour/cuisine	37,10m ²
2.1	chambre	13,40m ²
2.2	chambre	10,65m ²
3.1	salle de bains	5,80m ²
3.3	w.c.	2,15m ²
4.1	hall	7,55m ²
5.1	technique	1,65m ²
6.2	loggia	11,65m ²

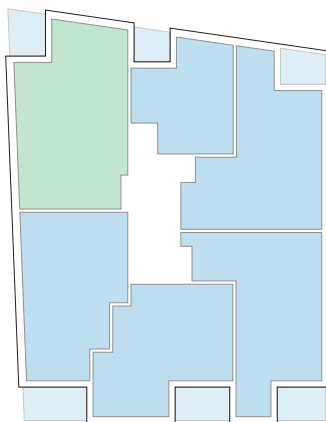
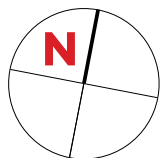
surface habitable

78,30m²



APPARTEMENT TYPE

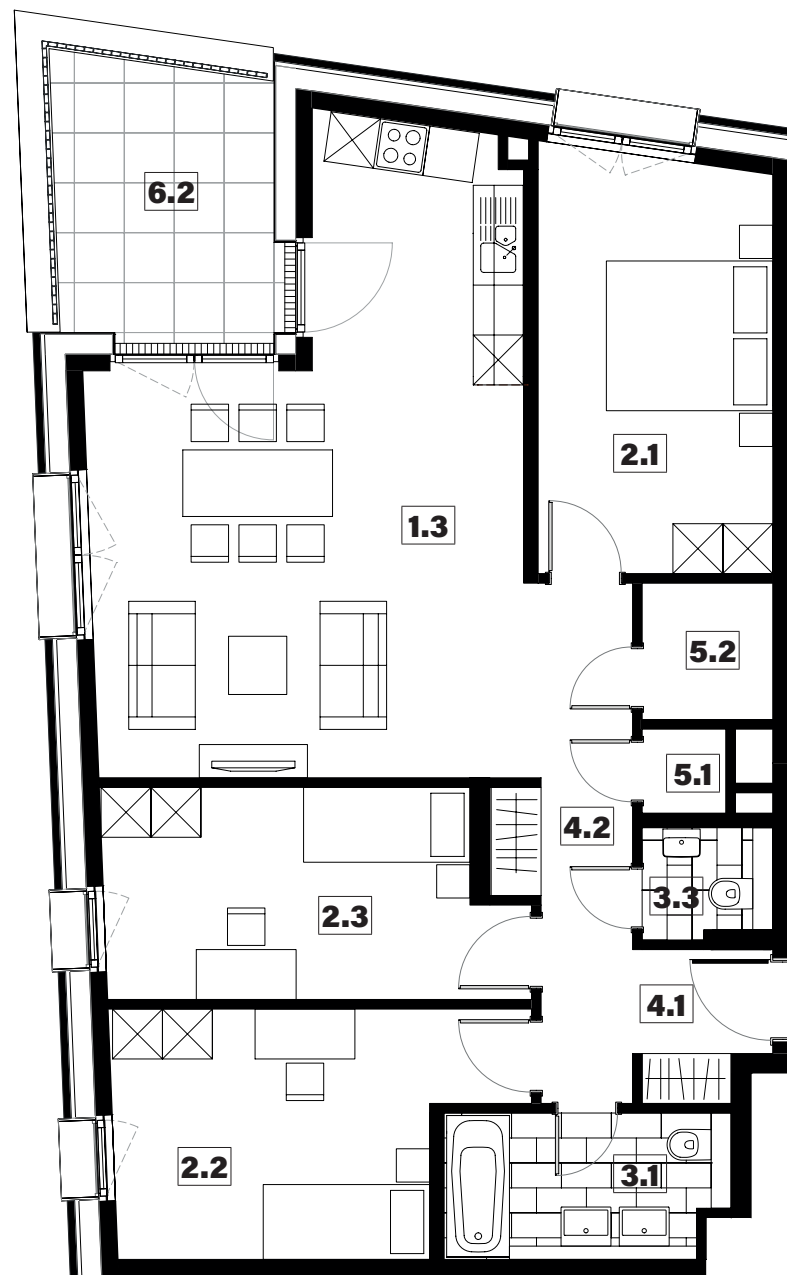
038



1.3	séjour/cuisine	32,90m ²
2.1	chambre	14,10m ²
2.2	chambre	12,85m ²
2.3	chambre	12,05m ²
3.1	salle de bains	5,80m ²
3.3	w.c.	2,00m ²
4.1	hall	4,75m ²
4.2	couloir	6,10m ²
5.1	technique	1,00m ²
5.2	débarras	2,55m ²
6.2	loggia	9,05m ²

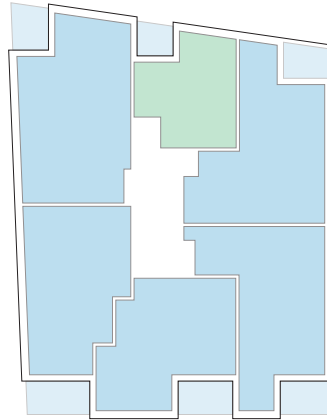
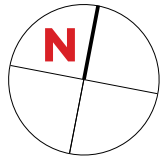
surface habitable

94,10m²



APPARTEMENT TYPE

039



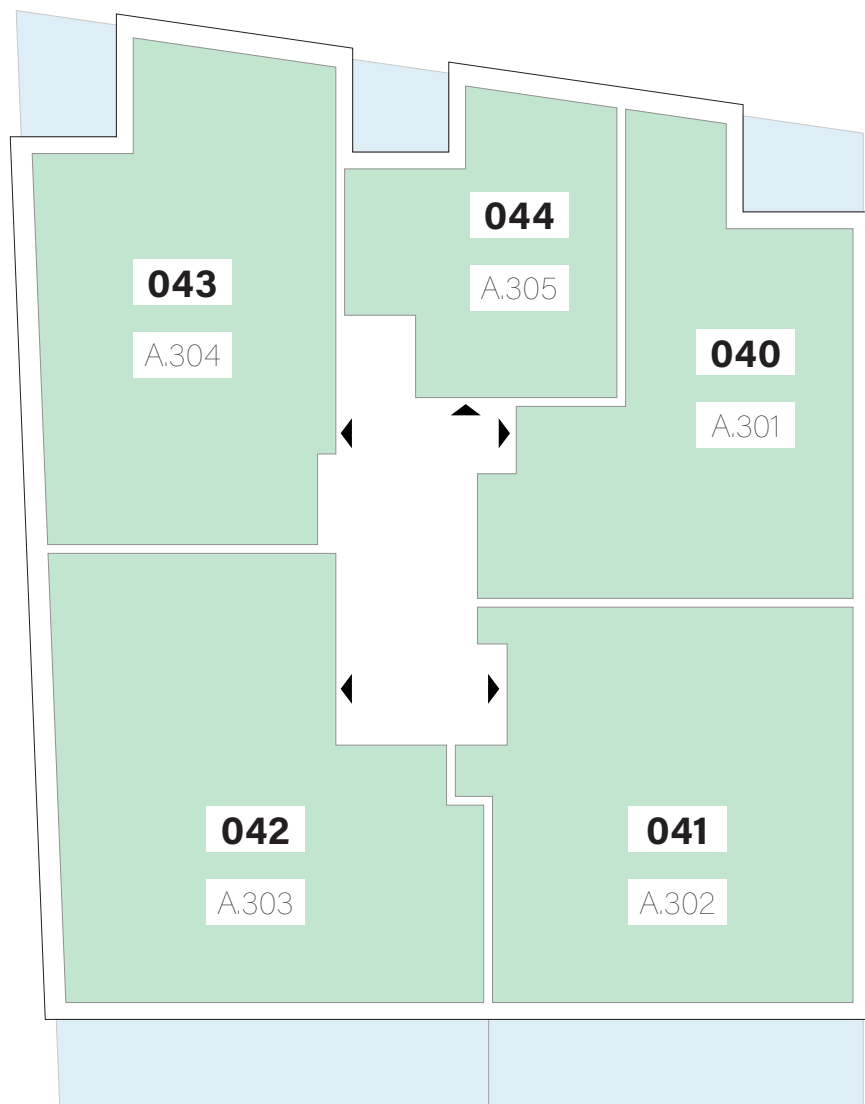
1.3	séjour/cuisine	24,40m ²
2.1	chambre	12,75m ²
3.1	salle de bains	5,75m ²
4.1	hall	3,45m ²
5.1	technique	1,40m ²
6.2	loggia	6,65m ²

surface habitable

47,75m²

APPARTEMENTS

3^{ème} ÉTAGE

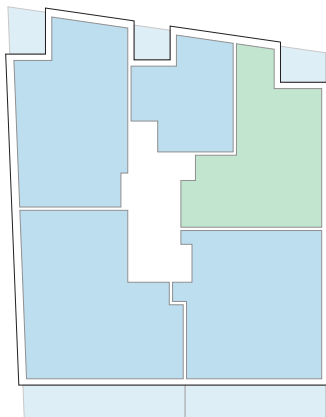
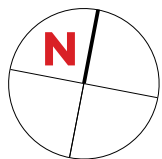


Type	Surface Utile	surface terrasse
040	88,45m ²	8,30m ²
041	106,16m ²	25,60m ²
042	119,18m ²	29,35m ²
043	99,42m ²	9,05m ²
044	49,05m ²	6,65m ²

- les surfaces inscrites dans ce tableau peuvent subir de légères modifications dues aux nécessités techniques de la construction.
- surface utile = surface calculée à l'intérieur des murs extérieurs.

APPARTEMENT TYPE

040



1.3	séjour/cuisine	34,65m ²
2.1	chambre	14,40m ²
2.2	chambre	12,45m ²
3.1	salle de bains	7,70m ²
3.3	w.c.	2,10m ²
4.1	hall	3,90m ²
4.2	couloir	6,85m ²
5.1	technique	3,00m ²
6.2	loggia	8,30m ²

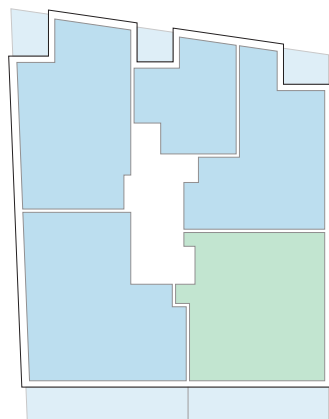
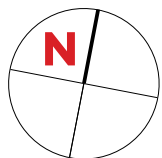
surface habitable

85,05m²



APPARTEMENT TYPE

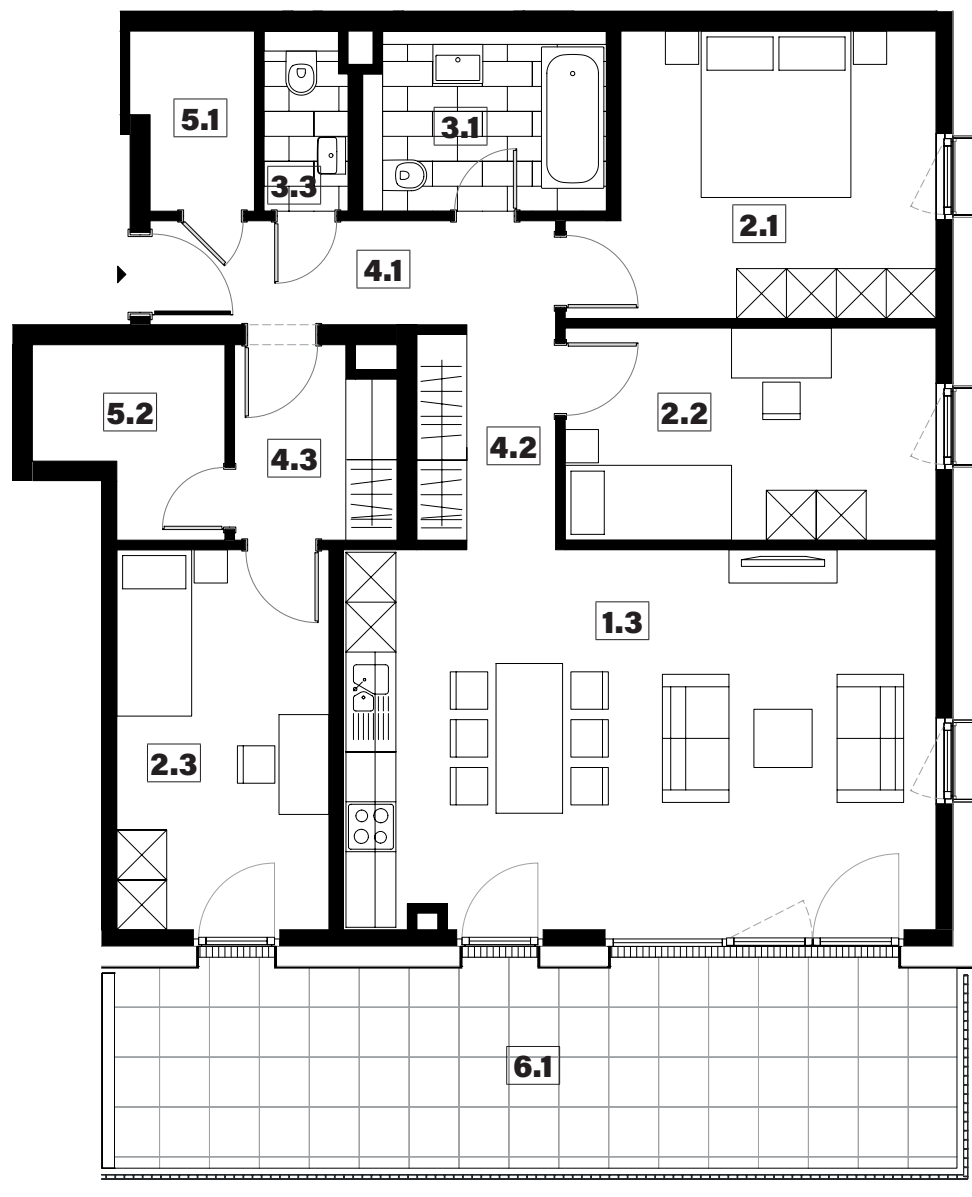
041



1.3	séjour/cuisine	32,40m ²
2.1	chambre	13,85m ²
2.2	chambre	11,37m ²
2.3	chambre	11,65m ²
3.1	salle de bains	6,20m ²
3.3	w.c.	2,10m ²
4.1	hall	4,75m ²
4.2	couloir	5,70m ²
4.3	couloir	4,30m ²
5.1	technique	2,95m ²
5.2	débarras	4,45m ²
6.1	terrasse	25,60m ²

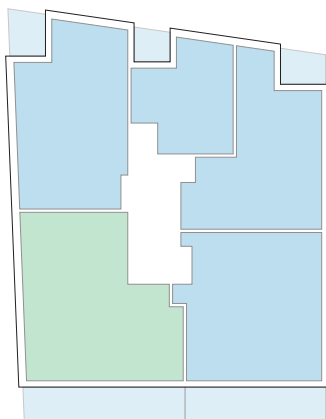
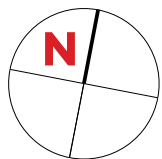
surface habitable

99,72m²



APPARTEMENT TYPE

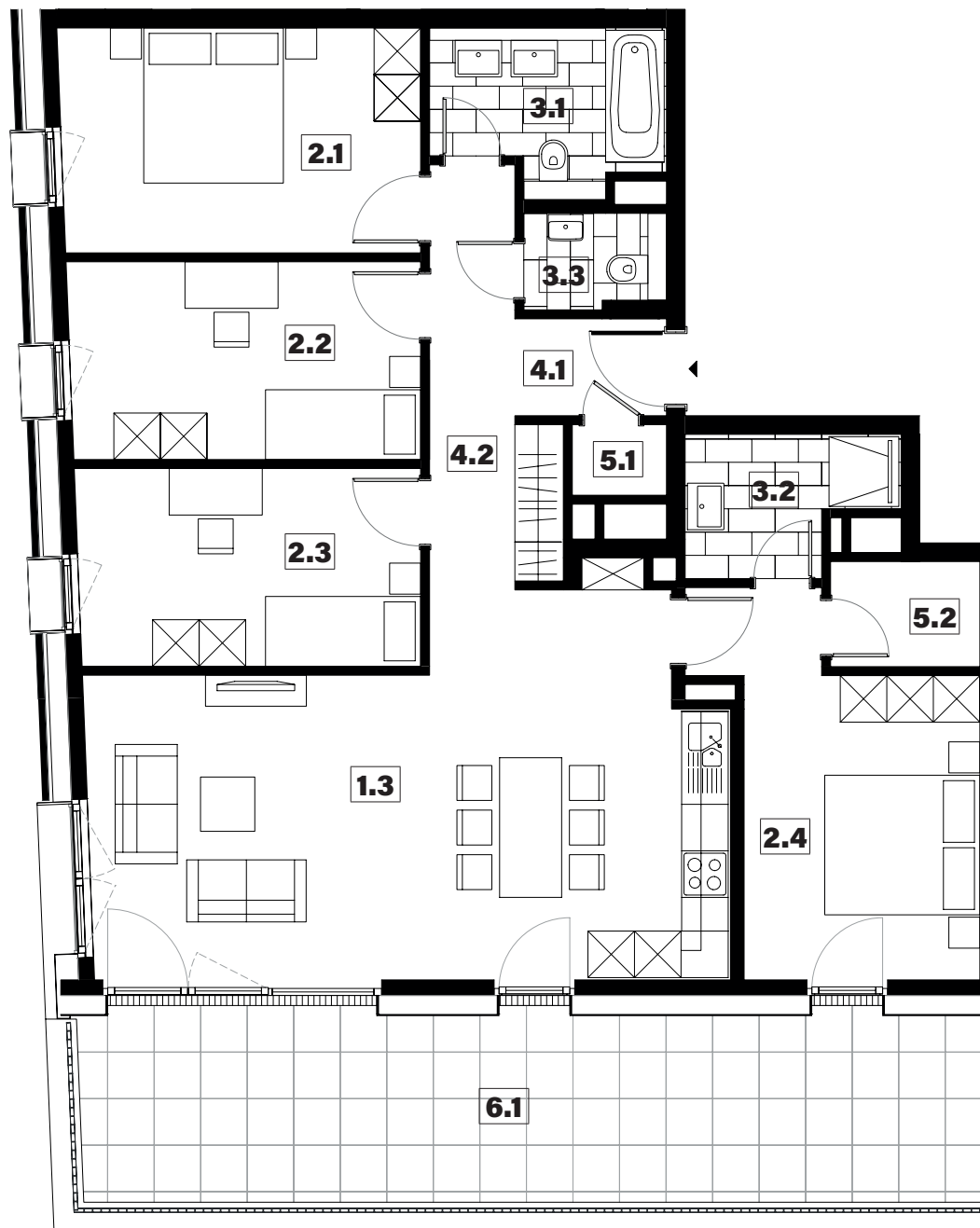
042



1.3	séjour/cuisine	32,20m ²
2.1	chambre	13,40m ²
2.2	chambre	11,50m ²
2.3	chambre	11,25m ²
2.4	chambre	13,90m ²
3.1	salle de bains	5,80m ²
3.2	salle de douche	4,26m ²
3.3	w.c.	2,10m ²
4.1	hall	2,40m ²
4.2	couloir	11,05m ²
5.1	technique	1,10m ²
5.2	débarras	2,60m ²
6.1	terrasse	29,35m ²

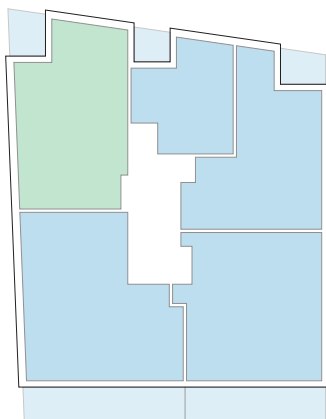
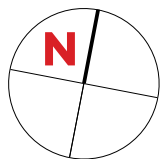
surface habitable

111,56m²



APPARTEMENT TYPE

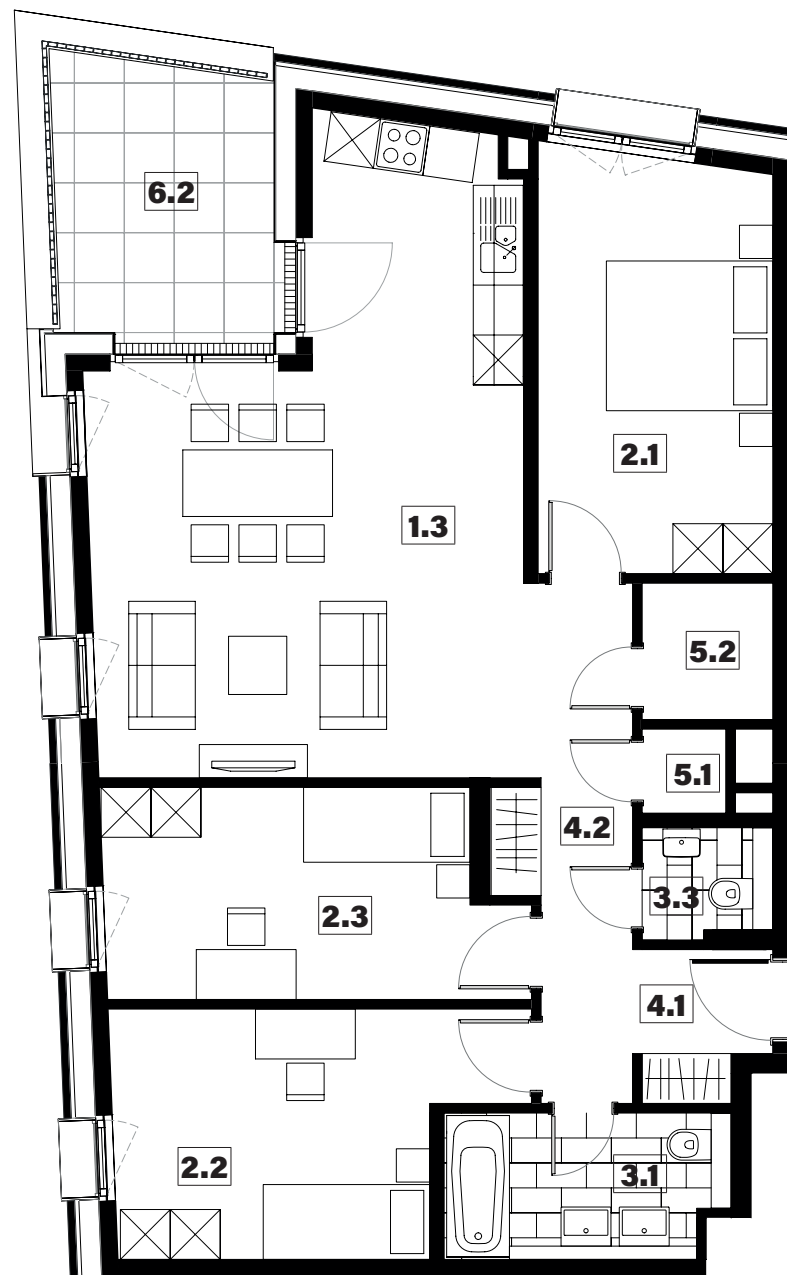
043



1.3	séjour/cuisine	32,85m ²
2.1	chambre	14,10m ²
2.2	chambre	12,85m ²
2.3	chambre	12,05m ²
3.1	salle de bains	5,80m ²
3.3	w.c.	2,00m ²
4.1	hall	4,75m ²
4.2	couloir	6,10m ²
5.1	technique	1,00m ²
5.2	débarras	2,55m ²
6.2	loggia	9,05m ²

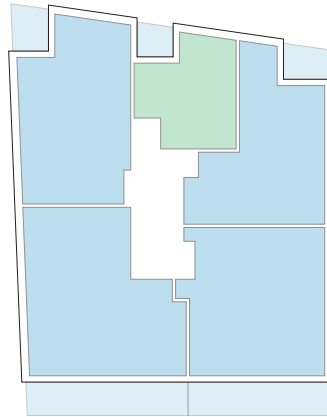
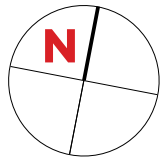
surface habitable

94,05m²



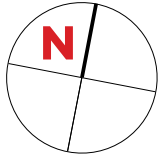
APPARTEMENT TYPE

044



1.3	séjour/cuisine	24,40m ²
2.1	chambre	12,75m ²
3.1	salle de bains	5,75m ²
4.1	hall	3,45m ²
5.1	technique	1,40m ²
6.2	loggia	6,65m ²

surface habitable
47,75m²



PLAN DE SITUATION

